

HOBBS OCD

SEP 06 2011

District I
1625 N. French Dr., Hobbs, NM 88240
District II
1301 W. Grand Avenue, Artesia, NM 88210
District III
1000 Rio Brazos Rd., Aztec, NM 87410
District IV
1220 S. St. Francis Dr., Santa Fe, NM 87505

State of New Mexico
Energy, Minerals & Natural Resources Department
OIL CONSERVATION DIVISION
1220 South St. Francis Dr.
Santa Fe, NM 87505

Form C-102
Revised October 15, 2009
Submit one copy to appropriate
District Office

AMENDED REPORT

WELL LOCATION AND ACREAGE DEDICATION PLAT

1 API Number 30-025-26593		2 Pool Code 85215 85217		3 Pool Name Shoe Bar Mississippian South (GAS)	
4 Property Code 6288 3879		5 Property Name Uno Mas		6 Well Number 1	
7 OGRID No 24010		8 Operator Name V-F Petroleum Inc.		9 Elevation 3,936'	

10 Surface Location

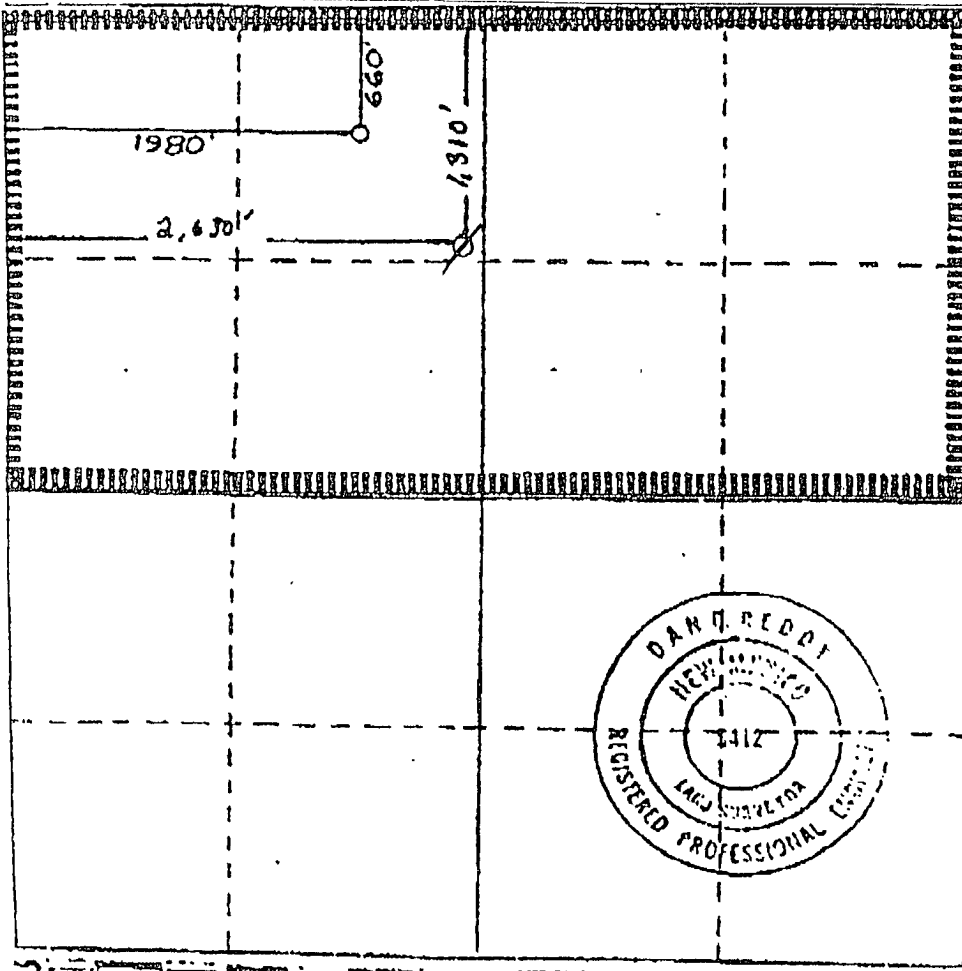
UL or lot no	Section	Township	Range	Lot Idn	Feet from the	North/South line	Feet from the	East/West line	County
C	12	17-S	35-E		660	North	1,980	West	Lea

11 Bottom Hole Location If Different From Surface

UL or lot no	Section	Township	Range	Lot Idn	Feet from the	North/South line	Feet from the	East/West line	County

12 Dedicated Acres 320	13 Joint or Infill N	14 Consolidation Code	15 Order No.
---------------------------	-------------------------	-----------------------	--------------

No allowable will be assigned to this completion until all interests have been consolidated or a non-standard unit has been approved by the division



17 OPERATOR CERTIFICATION

I hereby certify that the information contained herein is true and accurate to the best of my knowledge and belief, and that this organization either owns a working interest or unleased mineral interest in the land including the proposed bottom hole location or has a right to drill this well at this location pursuant to a contract with an owner of such a mineral or working interest or to a voluntary pooling agreement or a compulsory pooling order heretofore entered by the division.

M. W. Luna 9/2/11
Signature Date

M. W. Luna
Printed Name

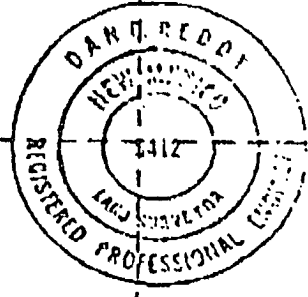
18 SURVEYOR CERTIFICATION

I hereby certify that the well location shown on this plat was plotted from field notes of actual surveys made by me or under my supervision, and that the same is true and correct to the best of my belief.

Well Surveyed
Nov. 14, 1970

Registered Professional Land Surveyor
and/or Equal Surveyor

Dan R. Reddy
Dan R. Reddy
NM P&LS #3412



Amended

JAN 24 2012