

Surface Use Plan
Hallertau 4 Federal No. 8H
Cimarex Energy Co. of Colorado
Unit A, Section 4
T26S-R32E; Lea County, NM

HOBBS OCD

FEB 29 2012

RECEIVED

1. Existing Roads: Area maps, Exhibit "A" shows the proposed well site as staked. Exhibit "B" is a reproduction of Eddy Co. General Highway Map. Exhibit "C" is a reproduction of a USGS Topographic Map, and Exhibit "C-1" is a well site layout map, showing proposed road to location and existing road. Existing road shown on Exhibits "C," and "C"-1 will be maintained in a condition equal to or better than current conditions.

A. The maximum width of the driving surface will be 15.' The road will be crowned and ditched with a 2% slope from the tip of the crown to the edge of the driving surface. The ditches will be 1' deep with 3:1 slopes. The driving surface will be made of 6" rolled and compacted caliche.

B. From the junction of Hwy 128 and Orla, go South for 10 miles to lease road. Go West 0.4 miles to lease road. Go southerly 0.1 miles to proposed lease road.

2. Planned Access Roads: 1681.8' of new, on-lease access road is proposed. A cattle guard will be installed on the boundary fence on the proposed Hallertau 4 Fed # 7 well pad for access.

3. Planned Electric Lines, Flowlines, SWD lines on Exhibit "C":

Approx 500' of E-line SE corner of pad to E section to a Excel PME.

Approx 1200' of 10" LP SDR-9 poly line for gas sales and 4" high pressure poly line for gas lift burried in the same trench down access road from the tank battery to the 60'x150'compressor/meter site at the Hallertau 4 Fed 7# location. 4" high pressure poly line will continue from compressor site to all remaing Hallertau 4 Fed wells when permitted. Site to contain DCP sales meter,Caterpillar 3516 compressor,two 30' x 10' scrubbers & piping. LP MAOP 130 psi, operating pressure 40-50 psi. HP MAOP 1500 psi operating pressure 200-300 psi. Lines will be used for gas lift and compression. Compressor site will be fenced with gate.

Approx 5300' of 4" SDR-11 surface poly line down existing roads and pipeline corridor to proposed SWD trunk line along south section line of Hallertau lease. MAOP 250 psi, anticipated working pressure 40-60 psi.

4. Location of Existing Wells in a One-Mile Radius - Exhibit A

A. Water wells -	None known
B. Disposal wells -	None known
C. Drilling wells -	None known
D. Producing wells -	As shown on Exhibits "A"
E. Abandoned wells -	As shown on Exhibits "A"

5. Location of Proposed Production Facilities:

If on completion this well is a producer, an expanded tank battery will be utilized and the necessary production equipment will be installed at the wellsite. This will prevent having a tank battery at each well. See production facilities layout diagram. Any changes to the facilities or off-site facilities will be accompanied by a Sundry Notice.

6. Location and Type of Water Supply:

Water will be purchased locally from a commercial source and trucked over the access roads.

7. Source of Construction Material:

If possible, native caliche will be obtained from the excavation of drill site. Topsoil will be pushed back from the drill site and existing caliche will be ripped and compacted. Then topsoil will be stockpiled on location as depicted on Exhibit "D" (rig layout). If additional material is needed, it will be purchased from a BLM-approved pit as near as possible to the well

Surface Use Plan
Hallertau 4 Federal No. 8H
Cimarex Energy Co. of Colorado
Unit A, Section 4
T26S-R32E; Lea County, NM

8. Ancillary Facilities:

- A. No camps or airstrips to be constructed.

9. Well Site Layout:

- A. Exhibit "D" shows location and rig layout.
- C. Mud pits in the closed circulating system will be steel pits and the cuttings will be stored in steel containment pits.
- D. Cuttings will be stored in steel pits until they are hauled to a state-approved disposal facility.
- E. If the well is a producer, those areas of the location not essential to production facilities will be reclaimed and seeded per BLM requirements.

10. Plans for Restoration of Surface:

Rehabilitation of the location will start in a timely manner after all drilling operations cease. The type of reclamation will depend on whether the well is a producer or a dry hole.

Drainage systems, if any, will be reshaped to the original configuration with provisions made to alleviate erosion. These may need to be modified in certain circumstances to prevent inundation of the location's pad and surface facilities. After the area has been shaped and contoured, topsoil from the spoil pile will be placed over the disturbed area to the extent possible. Revegetation procedures will comply with BLM standards.

If the well is a dry hole, the pad and road area will be recountoured to match the existing terrain. Topsoil will be spread to the extent possible. Revegetation will comply with BLM standards.

Should the well be a producer, those areas of the location not essential to production facilities and operations will be reclaimed and seeded per BLM requirements. Please see Production Facilities Layout Diagram, exhibit D-1.

11. Other Information

- A. Topography consists of a sloping plane with loose tan sands. Vegetation is mainly yucca, mesquite and shin oak.
- B. The wellsite is on surface owned by Department of the Interior, Bureau of Land Management. The land is used mainly for farming, cattle ranching, recreational use, and oil and gas production.
- C. An Archaeological survey will be conducted on the location and proposed roads, and this report will be filed with the Bureau of Land Management in the Carlsbad BLM office.
- D. There are no known dwellings within 1½ miles of this location.

Operator Certification Statement
Hallertau 4 Federal No. 8H
Cimarex Energy Co. of Colorado
Unit A, Section 4
T26S-R32E; Lea County, NM

Operator's Representative

Cimarex Energy Co. of Colorado
600 N. Marienfeld St., Ste. 600
Midland, TX 79701
Office Phone: (432) 571-7800
Zeno Farris

CERTIFICATION: I hereby certify that I, or someone under my direct supervision, have inspected the drill site and access route proposed herein; that I am familiar with the conditions which currently exist; that I have full knowledge of state and Federal laws applicable to this operation; that the statements made in this APD package are, to the best of my knowledge, true and correct; and that the work associated with the operations proposed herein will be performed in conformity with this APD package and the terms and conditions under which it is approved. I also certify that I, or the company I represent, am responsible for the operations conducted under this application. These statements are subject to the provisions of 18 U.S.C. 1001 for the filing of false statements.

Executed this 16th day of January, 2012

NAME: Zeno Farris
Zeno Farris

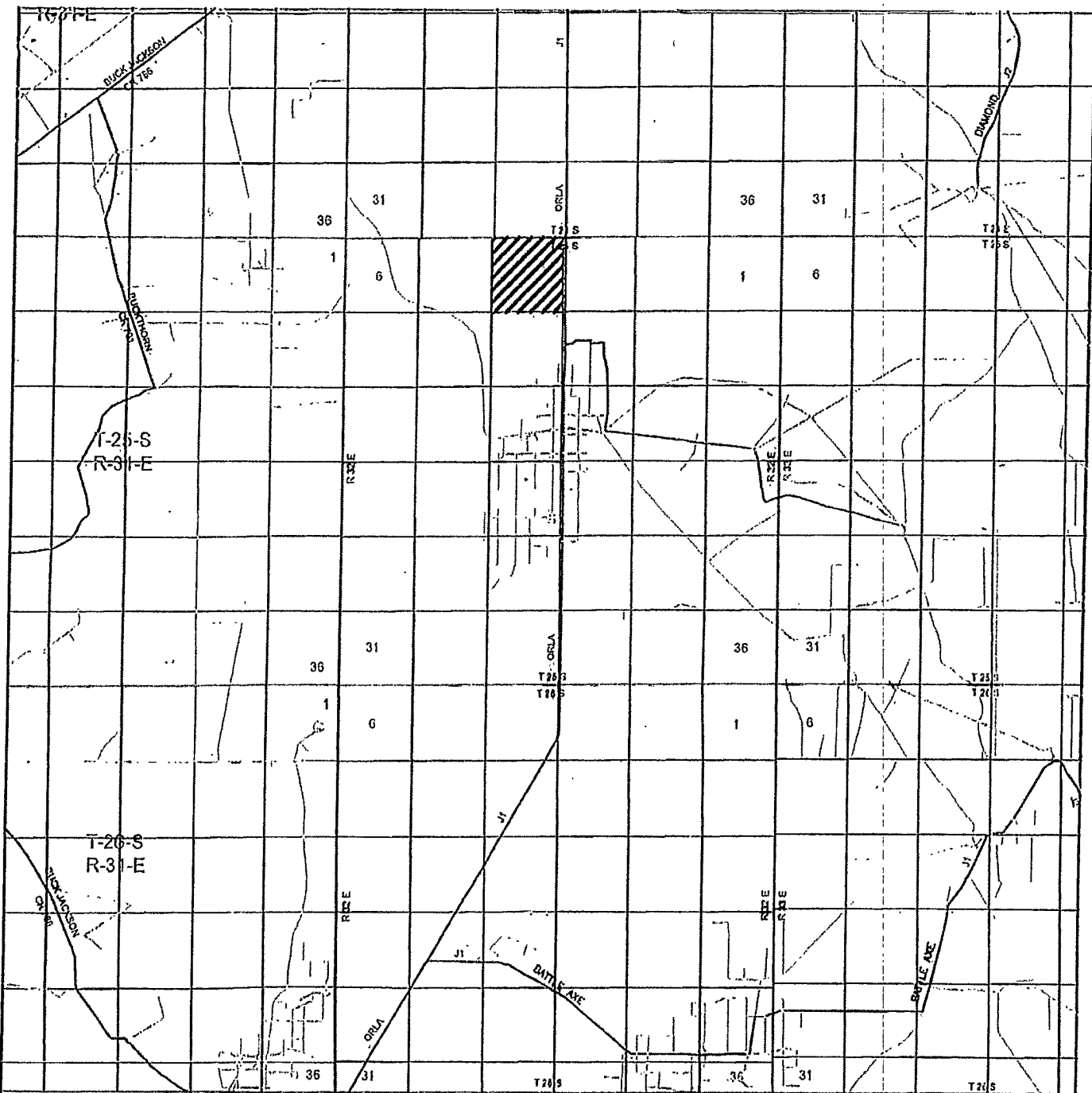
TITLE: Manager Operations Administration

ADDRESS: 600 N. Marienfeld St., Ste. 600
Midland, TX 79701

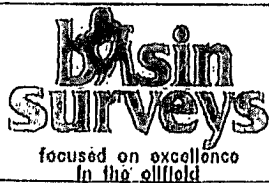
TELEPHONE: (432) 620-1938

EMAIL: zfarris@cimarex.com

Field Representative: Same as above



HALLERTAU "4" FEDERAL #8 H
 Located 330' FNL and 510' FEL
 Section 4, Township 26 South, Range 32 East,
 N.M.P.M., Lea County, New Mexico.



P.O. Box 1786
 1120 N. West County Rd.
 Hobbs, New Mexico 88241
 (575) 393-7316 - Office
 (575) 392-2206 - Fax
 basin-surveys.com

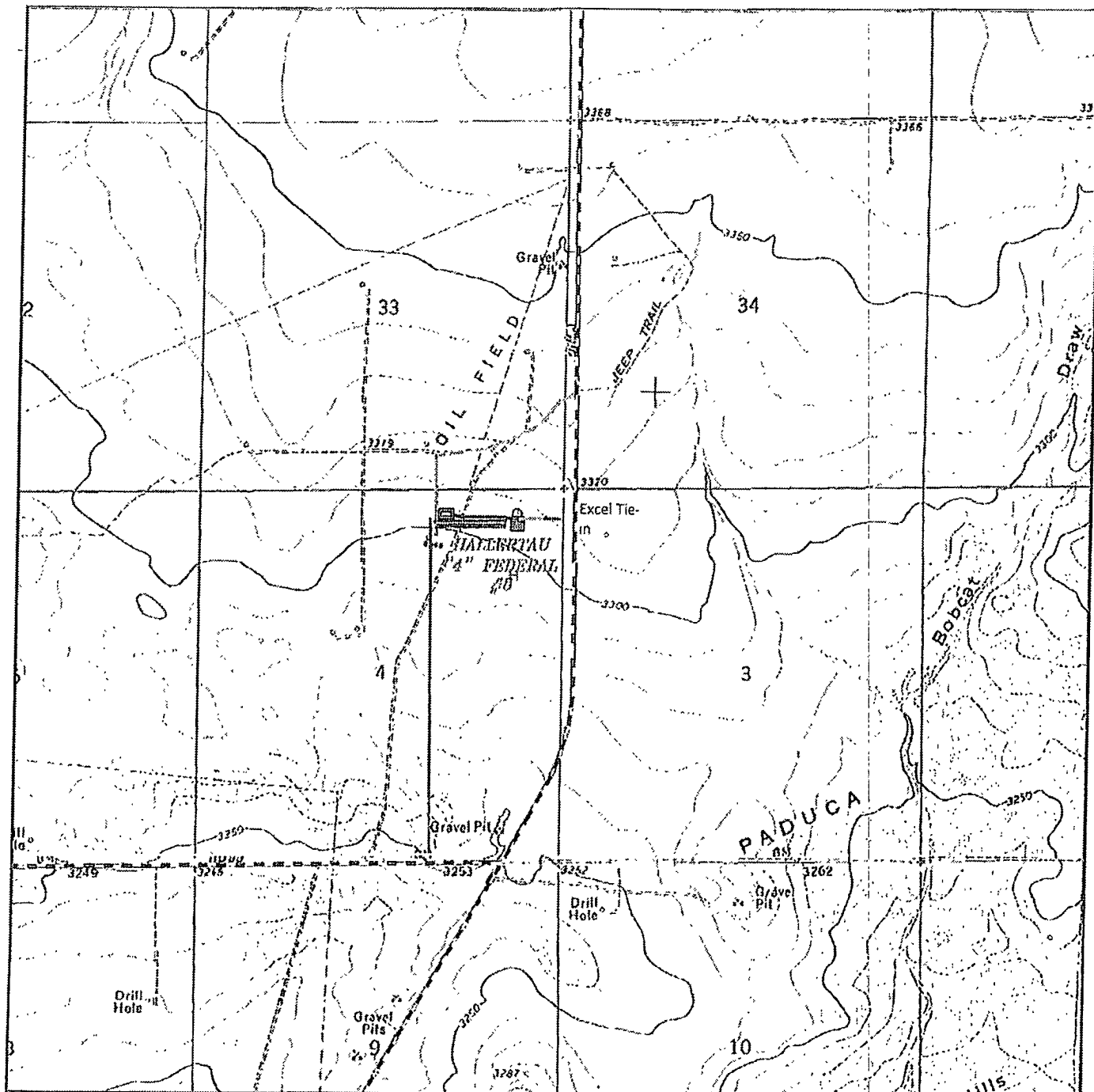
W.O. Number: JMS 25947

Survey Date: 01-05-2012

Scale: 1" = 2 Miles

Date: 01-06-2012

**CIMAREX
 ENERGY CO.
 OF COLORADO**



HALLERTAU "4" FEDERAL #8H
 Located 330' FNL and 510' FEL
 Section 4, Township 26 South, Range 32 East,
 N.M.P.M., Lea County, New Mexico.

E-Line Battery Proposed SWD Trunk
 4" surface SWD flowline
 10" LP & 4" HP ploy: Compression, Gas Lift
 60'x100' Compressor Site

basin
SURVEYS
 focused on excellence
 in the oilfield

P.O. Box 1786
 1120 N. West County Rd.
 Hobbs, New Mexico 88241
 (575) 393-7316 -- Office
 (575) 392-2206 -- Fax
 basin-surveys.com

W.O. Number: JMS 25947

Survey Date: 01-05-2012

Scale: 1" = 2000'

Date: 01-06-2012

CIMAREX
ENERGY CO.
OF COLORADO

SECTION 4, TOWNSHIP 26 SOUTH, RANGE 32 EAST, N.M.P.M.,
LEA COUNTY, NEW MEXICO.

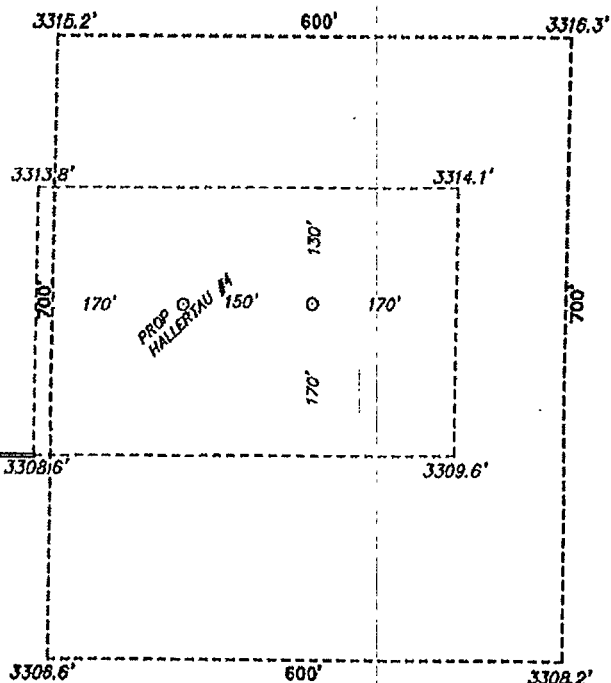


CIMAREX ENERGY CO. OF COLORADO
HALLERTAU "4" FEDERAL #8-1
ELEV. - 3312'

Lat - N 32°04'43.52"
Long - W 103°40'23.27"
NMSPEC - N 393013.583
E 745819.186
(NAD-83)

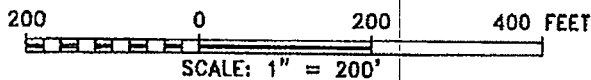
HALLERTAU 7H

PROPOSED LEASE ROAD 649.8'



Directions to Location:

FROM JUNCTION OF HWY 128 AND ORLA, GO SOUTH
FOR 10.0 MILES TO LEASE ROAD, ON LEASE ROAD
GO WEST 0.4 MILES TO LEASE ROAD, GO SOUTHERLY
FOR 0.1 MILES TO PROPOSED LEASE ROAD.



CIMAREX ENERGY CO. OF COLORADO

REF: HALLERTAU "4" FEDERAL #8-1/ WELL PAD TOPO

THE HALLERTAU "4" FEDERAL #8-1 LOCATED 330' FROM
THE NORTH LINE AND 510' FROM THE EAST LINE OF
SECTION 4, TOWNSHIP 26 SOUTH, RANGE 32 EAST,
N.M.P.M., LEA COUNTY, NEW MEXICO.

BASIN SURVEYS P.O. BOX 1786-HOBBS, NEW MEXICO

W.O. Number: 25947

Drawn By: J. SMALL

Date: 01-06-2012

Disk: JMS 25947

Survey Date: 01-05-2012

Sheet 1 of 1 Sheets