

District I
1625 N French Dr., Hobbs, NM 88240
Phone (575) 393-6161 Fax (575) 393-0720
District II
811 S. First St., Artesia, NM 88210
Phone (575) 748-1283 Fax (575) 748-9720
District III
1000 Rio Brazos Road, Aztec, NM 87410
Phone (505) 334-6178 Fax (505) 334-6170
District IV
1220 S. St. Francis Dr., Santa Fe, NM 87505
Phone (505) 476-3460 Fax (505) 476-3462

State of New Mexico
Energy Minerals and Natural Resources
Oil Conservation Division
1220 South St. Francis Dr.
Santa Fe, NM 87505

Form C-101
Revised December 16, 2011

Permit

HOBBS OCD
OCT 01 2012
RECEIVED

APPLICATION FOR PERMIT TO DRILL, RE-ENTER, DEEPEN, PLUGBACK, OR ADD A ZONE

¹ Operator Name and Address Fasken Oil and Ranch, Ltd. 303 W. Wall St., Ste. 1800, Midland, TX 79701		² OGRID Number 151416
		³ API Number 30-025-32847
⁴ Property Code 18170	⁵ Property Name Wingerd	⁶ Well No 14

⁷ Surface Location

UL - Lot	Section	Township	Range	Lot Idn	Feet from	N/S Line	Feet From	E/W Line	County
J	24	12S	37E		1650'	South	1930'	East	Lea

⁸ Pool Information

Gladiola; Wolfcamp	27930
--------------------	-------

Additional Well Information

⁹ Work Type P	¹⁰ Well Type Oil	¹¹ Cable/Rotary R	¹² Lease Type S P	¹³ Ground Level Elevation 3883' GR
¹⁴ Multiple No	¹⁵ Proposed Depth 11,555'	¹⁶ Formation Wolfcamp	¹⁷ Contractor	¹⁸ Spud Date 10-8-2012
Depth to Ground water		Distance from nearest fresh water well		Distance to nearest surface water

¹⁹ Proposed Casing and Cement Program

Type	Hole Size	Casing Size	Casing Weight/ft	Setting Depth	Sacks of Cement	Estimated TOC
Surface	17 1/2"	13 3/8"	48	396'	500 sx "C"	Surface
Inter.	11"	8 5/8"	24 & 32	4495'	1300 sx "C"	Surface
Prod.	7 7/8"	5 1/2"	17 & 20	12,194'	2145 sx "H"	Surface
			DV Tool @	8916'		

Casing/Cement Program: Additional Comments

--

Proposed Blowout Prevention Program

Type	Working Pressure	Test Pressure	Manufacturer

I hereby certify that the information given above is true and complete to the best of my knowledge and belief I further certify that the drilling pit will be constructed according to NMOCD guidelines <input type="checkbox"/> , a general permit <input type="checkbox"/> , or an (attached) alternative OCD-approved plan <input type="checkbox"/> . Closed Loop Pit Appl. attached.		OIL CONSERVATION DIVISION	
Signature <i>Kim Tyson</i>		Approved By <i>[Signature]</i>	
Printed name Kim Tyson		Title Petroleum Engineer	
Title Regulatory Analyst		Approved Date	Expiration Date
E-mail Address kimt@for1.com		OCT 02 2012	
Date 9-28-2012	Phone 432-687-1777	Conditions of Approval Attached	

Permit Expires 2 Years From Approval Date Unless Drilling Underway Plugback

OCT 02 2012

District I
1625 N French Dr., Hobbs NM 88240
Phone (575) 393-6161 Fax (575) 393-0720
District II
811 S First St., Artesia, NM 88210
Phone (575) 748-1283 Fax (575) 748-9720
District III
1000 Rio Brazos Road, Aztec, NM 87410
Phone (505) 334-6178 Fax (505) 334-6170
District IV
1220 S St Francis Dr., Santa Fe, NM 87505
Phone (505) 476-3460 Fax (505) 476-3462

State of New Mexico
Energy, Minerals & Natural Resources Department
OIL CONSERVATION DIVISION
1220 South St. Francis Dr.
Santa Fe, NM 87505

Form C-102
Revised August 1, 2011
Submit one copy to appropriate
District Office

☐ AMENDED REPORT

RECEIVED

WELL LOCATION AND ACREAGE DEDICATION PLAT

¹ API Number 30-025-32847	² Pool Code 27930	³ Pool Name Gladiola; Wolfcamp
⁴ Property Code	⁵ Property Name Wingerd	⁶ Well Number 14
⁷ OGRID No. 151416	⁸ Operator Name Fasken Oil and Ranch, Ltd.	⁹ Elevation 3883' GR

¹⁰ Surface Location									
UL or lot no.	Section	Township	Range	Lot Idn	Feet from the	North/South line	Feet from the	East/West line	County
J	24	12S	37E		1650'	South	1930'	East	Lea

¹¹ Bottom Hole Location If Different From Surface									
UL or lot no.	Section	Township	Range	Lot Idn	Feet from the	North/South line	Feet from the	East/West line	County
J	24	12S	37E		1798'	South	1762'	East	Lea

¹² Dedicated Acres 40	¹³ Joint or Infill	¹⁴ Consolidation Code	¹⁵ Order No.
--	-------------------------------	----------------------------------	-------------------------

No allowable will be assigned to this completion until all interests have been consolidated or a non-standard unit has been approved by the division.

¹⁶	¹⁷ OPERATOR CERTIFICATION I hereby certify that the information contained herein is true and complete to the best of my knowledge and belief, and that this organization either owns a working interest or unleased mineral interest in the land including the proposed bottom hole location or has a right to drill this well at this location pursuant to a contract with an owner of such a mineral or working interest, or to a voluntary pooling agreement or a compulsory pooling order heretofore entered by the division Signature: <u>Kim Tyson</u> Date: <u>9-28-2012</u> Printed Name: <u>Kim Tyson</u> E-mail Address: <u>kimt@for1.com</u>
	¹⁸ SURVEYOR CERTIFICATION I hereby certify that the well location shown on this plat was plotted from field notes of actual surveys made by me or under my supervision, and that the same is true and correct to the best of my belief Date of Survey: _____ Signature and Seal of Professional Surveyor: _____ Certificate Number: _____

Workover Procedure
Wingard No. 14
SHL: 1650' FSL & 1930' FEL
BHL: 1798' FSL & 1762' FEL
Sec 24, T12S R37E

OBJECTIVE:	Drill out CIBP, set new CIBP and test Wolfcamp potential.
WELL DATA:	
13-3/8" 48# H-40 casing:	Set at 396.48', Cmt 500 sx "C" (14.8 ppg, 1.32 cuft/sk), TOC surf, circ 109 sx
8-5/8" 24&32# casing:	Set at 4495.07', Cmt 1100 sx "C" w/10# slit (12.7 ppg, 2.04 cuft/sk)+200 sx "C" neat (14.8 ppg, 1.32 cuft/sk); TOC surf, circ 83 sx
5-1/2" 17# & 20# N-80 casing (20# TD-9706', 1jt abv & 1jt below DV, and 1526'-surf):	Set at 12,193.69', DV 8916.13', 1 st stg 500 sx "H" w/6% gel (12.5 ppg, 1.92 cuft/sk)+320 sx "H" w/8#/sk CSE (14.05 ppg, 1.61 cuft/sk), circ 140sx thru DV, 2 nd stg 1225 sx "H" w/6% gel (12.5 ppg, 1.92 cuft/sk)+100sx "H" w/8#/sk CSE (14.05 ppg, 1.61 cuft/sk); TOC surf, circ 102 sx
Current Perfs:	11,646'-648', 11,660'-690', 11,712'-715', 11,720'-724', 11,727'-730' (-31 holes)
KB:	18'
TD:	12,800'
PBTD:	10,053' - CIBP
Tubing:	none, pulled 12-1-99
12-19-99 Static FL:	7250'; ran rods and pump, loaded 2-7/8" tbg 35 bbls

1. Notify NMOCD of intent to rig up and start workover. Check with Kim Tyson to make sure we have obtained pit permits before starting work.
2. Receive 250 bbl steel half-frac workover tank with gas buster, one 500 bbl test tank; 3k manual BOP with 2-3/8" pipe rams, 5-1/2" flowtree, and 2 sets of pipe racks on location. Make sure there are 3000 psi valves on tubing head outlets with xxlt & PT nipples.
3. Set matting boards, RUPU, and set pipe racks NDWH and NU BOP. Build flowline from well head to both workover tank and test tank.
4. Receive 11,600' of 2-3/8" 4.7# EUE 8rd N-80 tubing and tally.
5. RIW with 4-3/4" bit, 6 3-1/2" drill collars, 5-1/2" casing scraper, and 2-3/8" tubing to PBTD @ 10,053'. RU power swivel and drill out CIBP and clean out to 11,640'. Circulate well clean using fresh water POW with tools and release reverse equipment.
6. RUWL and packoff. RUN GR/CCL log from 11,625' to +/- 8,900' correlated to Schlumberger's compensated Nuetron-Litho Density open hole log from April 9, 1995. RIW and set 5-1/2" 10k CIBP @ 11,590' and dump a minimum of 35' Class "H" cement on top.
7. NU 7-1/16" 10k frac valve and 5-1/2" 20# casing saver. RU high-pressure pump truck on casing and test 5-1/2" casing and CIBP to 6000 psi for 10" and report the results to the midland office.
8. If casing tests ok bleed pressure off of 5-1/2" casing ND frac valve and casing saver and NU BOP. Keep frac valve and casing saver on location for frac job.
9. RIW with seating nipple and open ended tubing and displace well with 2% powdered KCl water @ 9,602'. Spot 500 gals 15% NEFE HCl acid.

10. RUWL and full lubricator. RIW with 3-1/8" select fire casing gun and perforate the Three Fingers Limestone interval as follows:

9,598'-9,602'	2 JSPF	8 Holes
9,532'-9,539'	1 JSPF	7 Holes
9,490'-9,497'	1 JSPF	7 Holes
9,461'-9,467'	1 JSPF	6 Holes
9,440'-9,446'	1 JSPF	6 Holes
9,387'-9,390'	1 JSPF	3 Holes
9,346'-9,349'	1 JSPF	3 Holes

All shots 120 degree phased, 0.40"EH, 40 holes total. POW with gun and make sure all shots fired. RDWL.

11. RU pump truck and displace spot acid into formation @ +/- 5 bpm. Max pressure 3,500 psi. Record ISIP, 5", 10", and 15" pressures.
12. Flow well to half-moon workover tank until well dies if needed.
13. RIW with 5-1/2" treating packer, X-O, seating nipple, and 2-3/8" tubing to 9,300'. ND BOP and NU flow tree. Set packer and swab acid load back. Notify Midland office of results and proceed to step 14 only with office approval.
14. RU service company and acidize Three Finger Limestone perms with 2500 gals 15% NEFE HCl acid. Drop 80 1.3sg ball sealers for diversion. Max surface pressure 4,000 psi. Record ISIP, 5", 10", and 15" pressures.
15. Flow and swab back acid load to workover tank while recording hourly fluid entry rates. Report results to Midland office.
16. Prepare to frac well if oil cut permits. If oil cut is not sufficient prepare to P&A well.
17. ND flow tree and NU BOP. Unseat packer and RIW past bottom perforation to remove ball sealers. POW with tubing and LD packer.
18. ND BOP and NU 10k frac valve and 5-1/2" casing saver. Set and fill frac tanks according to frac proposal.
19. RU stimulation company. NU 5-1/2" 20# casing saver and flowback manifold. Frac Three Fingers Limestone as per fracture recommendation. Max surface treating pressure 6000 psi.
20. Flowback well via 5-1/2" casing until SI pressure is below 2000 psi ND casing saver and continue flowing back well until dead.
21. ND frac valve and NU BOP. RIW with tubing, pump and rods. Note: If necessary RIW with 2 jts. Of tubing and split bull plug on sandline and tag PBTD.
22. Space rods out and RDPU.
23. Set pumping unit and connect to electricity. Pressure test flow line to 500 psi and begin producing to battery. Clean location and release all rental tools.

Wingerd No. 14

Current

Fasken Oil and Ranch, Ltd.

SHL: 1650' FSL, 1930' FEL
BHL: 1798' FSL, 1762' FEL
Sec 24, T12S, R37E
Lea County, New Mexico
Compl.: 22-May-95
API #: 30-025-32847
IP:
TD: 12,800'
PBSD: 10,053'
Casing: **13-3/8" 48#/ft H-40@ 396.48'**

Cmt 500sx "C" w/2% CaCl₂ (14.8ppg, 1.32 cuft/sk)

TOC surf, cir 109 sx

8-5/8" 24&32#/ft @ 4495.07'

Cmt 1100sx PSL "C" w/10#slt (12.7ppg, 2.04 cuft/sk)

+ 200sx "C" (14.8ppg, 1.32 cuft/sk)

TOC surf, cir 83 sx

5-1/2" 17-20# N-80 @ 12193.69'

Cmt 1st stg 500sx PSL "H" w/6% gel (12.5ppg, 1.92 cuft/sk)

+320sx "H" w/8#/sk CSE (14.05 ppg, 1.61 cuft/s)

Circ 140 sx cmt thru DV

DV: 8916.13'

Cmt 2nd stg 1225sx PSL "H" w/6% gel (12.5ppg, 1.92 cuft/sk)

+100sx "H" w/8#/sk CSE (15.6 ppg, 1.17 cuft/sk)

TOC surf, cir 102 sx

Tubing: Pulled and layed down 12-1-99, TA'd

CIBP: 10,053' 5/10/2006

Perfs/plugs:

11646'-11648' (5h 5-13-95)
11660'-11690' (61h 5-13-95)

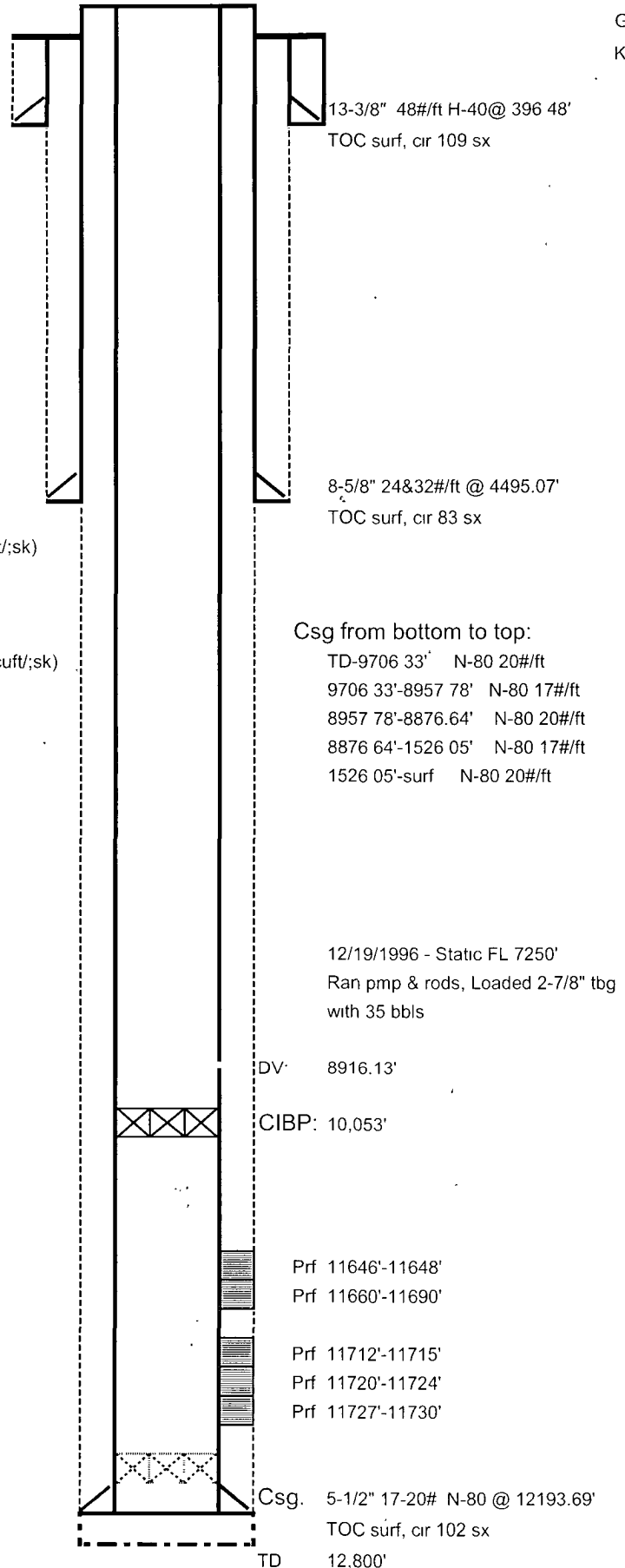
11712'-11715' (6h 5-6-95)
11720'-11724' (8h 5-6-95)
11727'-11730' (6h 5-6-95)

CR: 11705' (5-17-95)

Knocked out CIBP w/sand line drill to 12150' (12-18-96)

TA'd well 12/1/99

*****PASSED MIT ON 5/12/2006*****



GL: 3883'

KB: 3901'

13-3/8" 48#/ft H-40@ 396.48'

TOC surf, cir 109 sx

8-5/8" 24&32#/ft @ 4495.07'

TOC surf, cir 83 sx

Csg from bottom to top:

TD-9706 33' N-80 20#/ft
9706 33'-8957 78' N-80 17#/ft
8957 78'-8876.64' N-80 20#/ft
8876 64'-1526 05' N-80 17#/ft
1526 05'-surf N-80 20#/ft

12/19/1996 - Static FL 7250'

Ran pmp & rods, Loaded 2-7/8" tbg
with 35 bbis

DV: 8916.13'

CIBP: 10,053'

Prf 11646'-11648'

Prf 11660'-11690'

Prf 11712'-11715'

Prf 11720'-11724'

Prf 11727'-11730'

Csg. 5-1/2" 17-20# N-80 @ 12193.69'

TOC surf, cir 102 sx

TD 12,800'

cwb

4-24-06

Wingerd 14 wb diagram (2) xls

Wingerd No. 14 Proposed

Current

Fasken Oil and Ranch, Ltd.

SHL: 1650' FSL, 1930' FEL
 BHL: 1798' FSL, 1762' FEL
 Sec 24, T12S, R37E
 Lea County, New Mexico
 Compl.: 22-May-95
 API #: 30-025-32847
 IP.
 TD: 12,800'
 PBD: 10,053'
 Casing: **13-3/8" 48#/ft H-40@ 396.48'**
 Cmt 500sx "C" w/2% CaCl₂ (14.8ppg, 1.32 cuft/sk)
 TOC surf, cir 109 sx
8-5/8" 24&32#/ft @ 4495.07'
 Cmt 1100sx PSL "C" w/10#/slt (12.7ppg, 2.04 cuft/sk)
 + 200sx "C" (14.8ppg, 1.32 cuft/sk)
 TOC surf, cir 83 sx
5-1/2" 17-20# N-80 @ 12193.69'
 Cmt 1st stg 500sx PSL "H" w/6% gel (12.5ppg, 1.92cuft/sk)
 +320sx "H" w/8#/sk CSE (14.05 ppg, 1.61 cuft/s)
 Circ 140 sx cmt thru DV
 DV: 8916.13'
 Cmt 2nd stg 1225sx PSL "H" w/6% gel (12/5ppg, 1.92 cuft/sk)
 +100sx "H" w/8#/sk CSE (15.6 ppg, 1.17cuft/sk)
 TOC surf, cir 102 sx

Tubing: Pulled and layed down 12-1-99, TA'd

CIBP: 11,590'

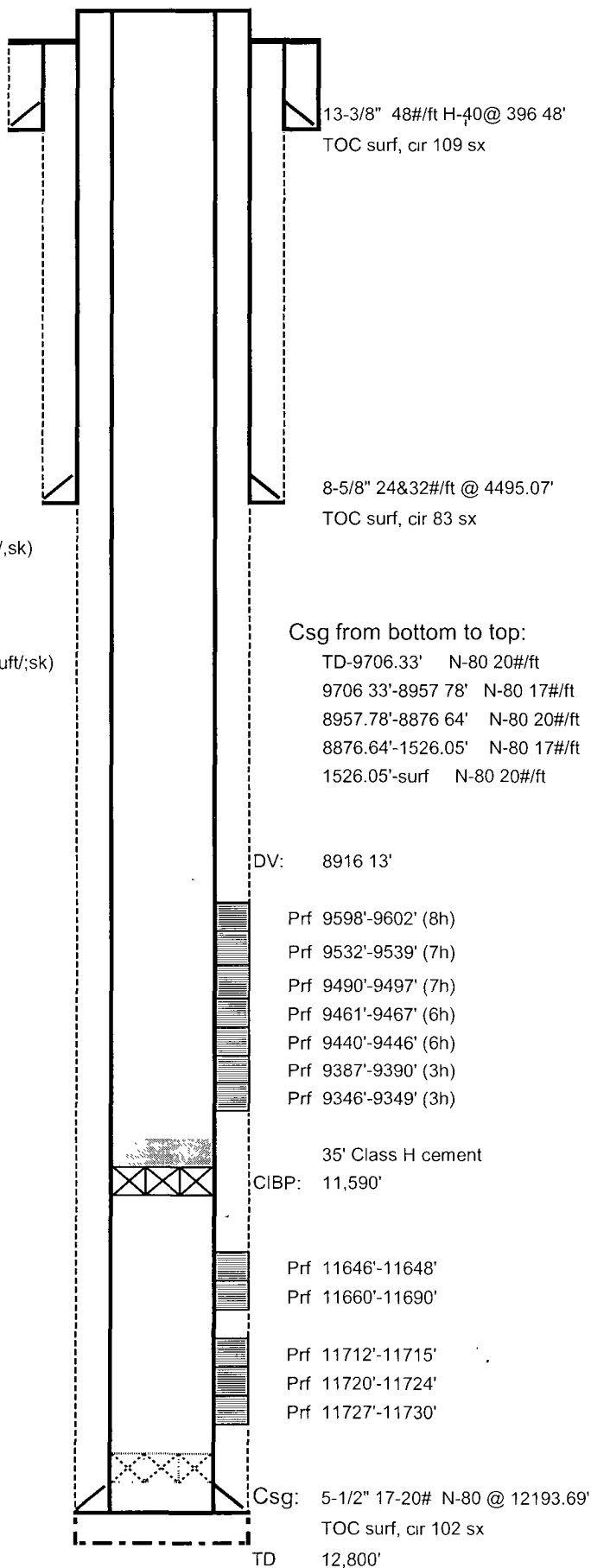
Perfs/plugs:-

11646'-11648' (5h 5-13-95)
 11660'-11690' (61h 5-13-95)
 11712'-11715' (6h 5-6-95)
 11720'-11724' (8h 5-6-95)
 11727'-11730' (6h 5-6-95)

CR: 11705' (5-17-95)
 Knocked out CIBP w/sand line drill to 12150' (12-18-96)

TA'd well 12/1/99

*****PASSED MIT ON 5/12/2006*****



GL: 3883'

KB: 3901'

cwb

4-24-06

Wingerd 14 wb diagram (2) xls