

DISTRICT I
P.O. Box 1900, Hobbs, NM 88241-1900

State of New Mexico
Energy, Minerals and Natural Resources Department

Form C-102
Revised February 10, 1994
Submit to Appropriate District Office
State Lease - 4 Copies
Fee Lease - 3 Copies

DISTRICT II
P.O. Drawer DD, Artesia, NM 88211-0719

OIL CONSERVATION DIVISION

DISTRICT III
1000 Rio Brazos Rd., Artec, NM 87410

P.O. Box 2088
Santa Fe, New Mexico 87504-2088

DISTRICT IV
P.O. BOX 2088, SANTA FE, N.M. 87504-2088

WELL LOCATION AND ACREAGE DEDICATION PLAT

AMENDED REPORT

API Number 30-025-36058	Pool Code 21655	Pool Name EK; Delaware
Property Code 6290	Property Name EDITH FEDERAL	Well Number 4
GRID No. 193407	Operator Name CONCHO RESOURCES, INC.	Elevation 3853'

Surface Location

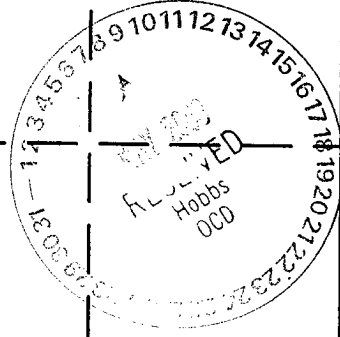
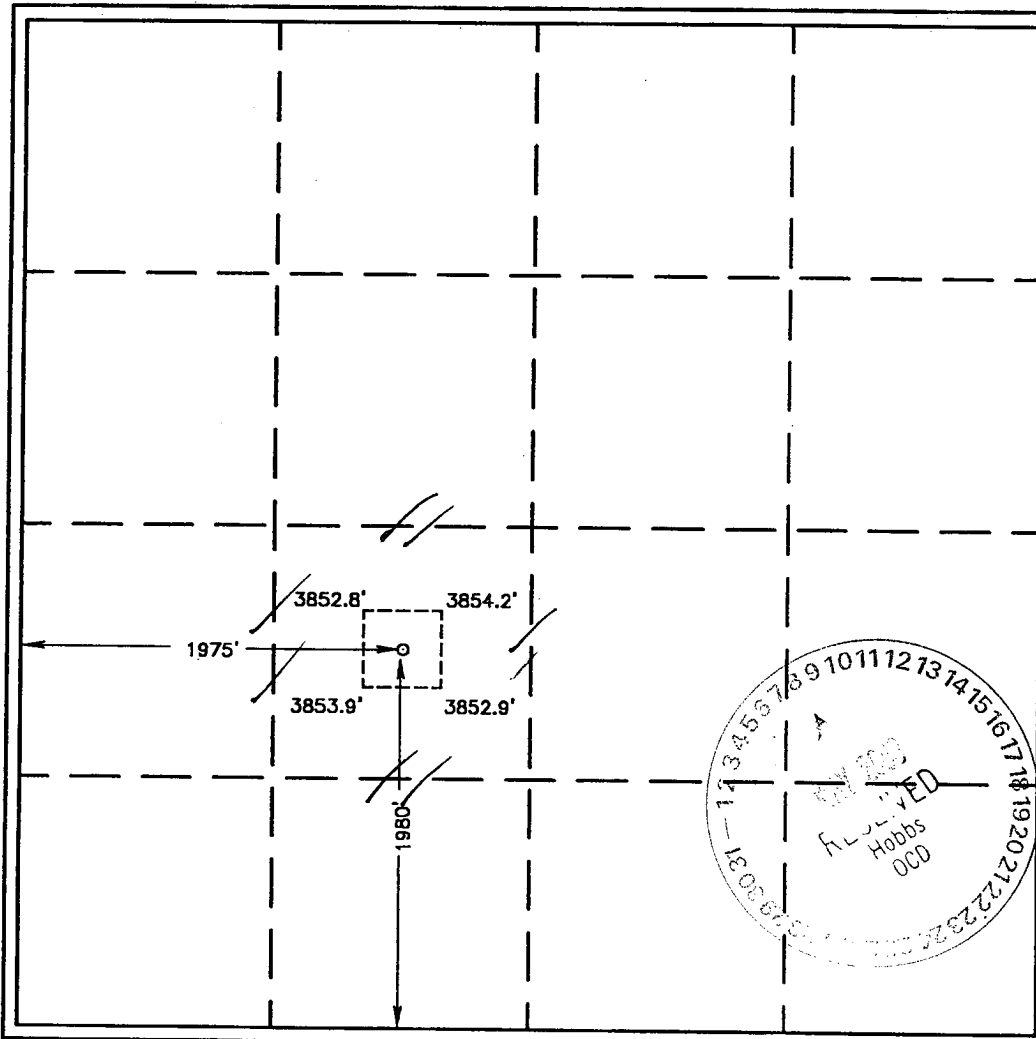
UL or lot No.	Section	Township	Range	Lot Idn	Feet from the	North/South line	Feet from the	East/West line	County
K	25	18-S	33-E		1980	SOUTH	1975	WEST	LEA

Bottom Hole Location If Different From Surface

UL or lot No.	Section	Township	Range	Lot Idn	Feet from the	North/South line	Feet from the	East/West line	County

Dedicated Acres 40	Joint or Infill	Consolidation Code	Order No.
-----------------------	-----------------	--------------------	-----------

NO ALLOWABLE WILL BE ASSIGNED TO THIS COMPLETION UNTIL ALL INTERESTS HAVE BEEN CONSOLIDATED OR A NON-STANDARD UNIT HAS BEEN APPROVED BY THE DIVISION



OPERATOR CERTIFICATION

I hereby certify that the information contained herein is true and complete to the best of my knowledge and belief.

Brenda Coffman
Signature
BRENDA COFFMAN
Printed Name
Reg Analyst
Title
5-7-03
Date

SURVEYOR CERTIFICATION

I hereby certify that the well location shown on this plat was plotted from field notes of actual surveys made by me or under my supervision, and that the same is true and correct to the best of my belief.

APRIL 29, 2001
Date Surveyed
AWB
Signature & Seal of Professional Surveyor
Ronald J. Edson 5/02/01
01-11-0519

Certificate No. RONALD J. EDSON 3239
GARY EDSON 12841