

Office

District I

1625 N. French Dr., Hobbs, NM 88240

District II

1301 W. Grand Ave., Artesia, NM 88213

District III

1000 Rio Brazos Rd., Aztec, NM 87410

District IV

1220 S. St. Francis Dr., Santa Fe, NM 87505

Energy, Minerals and Natural Resources

CONSERVATION DIVISION

1220 South St. Francis Dr.

Santa Fe, NM 87505

June 19, 2008

WELL API NO.

30-025-33919

5. Indicate Type of Lease

STATE ☐ FEE ☒

6. State Oil &amp; Gas Lease No.

N/A

7. Lease Name or Unit Agreement Name

Bertha Barber

8. Well Number 016

9. OGRID Number

873

10. Pool name or Wildcat

## SUNDRY NOTICES AND REPORTS ON WELLS

(DO NOT USE THIS FORM FOR PROPOSALS TO DRILL OR TO DEEPEN OR PLUG BACK TO A DIFFERENT RESERVOIR. USE "APPLICATION FOR PERMIT" (FORM C-101) FOR SUCH PROPOSALS.)

1. Type of Well: ☒ Oil Well ☐ Gas Well ☐ Other:

2. Name of Operator

Apache Corporation

3. Address of Operator

303 Veterans Airpark Lane, Suite 3000 Midland, TX 79705

4. Well Location

Unit Letter K : 2140 feet from the South line and 1650 feet from the West line  
Section 05 Township 20S Range 37E NMPM County Lea11. Elevation (Show whether DR, RKB, RT, GR, etc.)  
3560' GR

## 12. Check Appropriate Box to Indicate Nature of Notice, Report or Other Data

## NOTICE OF INTENTION TO:

PERFORM REMEDIAL WORK ☐ PLUG AND ABANDON ☐  
TEMPORARILY ABANDON ☐ CHANGE PLANS ☐  
PULL OR ALTER CASING ☐ MULTIPLE COMPL ☐  
DOWNHOLE COMMINGLE ☐

OTHER: Recompletion

☒

## SUBSEQUENT REPORT OF:

REMEDIAL WORK ☐ ALTERING CASING ☐  
COMMENCE DRILLING OPNS ☐ P AND A ☐  
CASING/CEMENT JOB ☐

OTHER:

☐

13. Describe proposed or completed operations. (Clearly state all pertinent details, and give pertinent dates, including estimated date of starting any proposed work). SEE RULE 11-103. For Multiple Completions: Attach wellbore diagram of proposed completion or recompletion.

Apache would like to drill out all plugs, squeeze the Blinbry and acid stimulate the Tubb and Abo as per the attached procedure.

Spud Date:

05/12/1997

Rig Release Date:

06/08/1997

I hereby certify that the information above is true and complete to the best of my knowledge and belief.

SIGNATURE

TITLE Regulatory Tech I

DATE 11/08/2012

Type or print name Fatima Vasquez

E-mail address: Fatima.Vasquez@apachecorp.com

PHONE: (432) 818-1015

For State Use Only

APPROVED BY:

TITLE DIST. MGR

DATE 11-27-2012

Conditions of Approval: Approval to Drill &amp; test all new zones separate, but cannot produce Downhole Commingle until DHC is approved in Hobbs District office according to R-11363.

NOV 29 2012

Bertha Barber #16  
API # 30-025-33919  
Sec 5, T20S, R37E  
Elevation: 3570' KB, 3554' GL  
TD: 7,800'  
PBSD: 5,563'

Casing Record: 13-3/8" 48# @ 490' w/ 545 sxs  
8-5/8" 24# & 28# @ 2429' w/ 980 sxs  
7" 23# @ 5122' w/ 150 sxs  
4-1/2" 11.6# K-55 @ 7796' w/ 235 sxs  
Liner HRG @ 4812 w/ 4-1/2" tie-back string to surface w/ 450 sxs

Perfs: Blinbry: 5604'-5802' (218 holes) (Temporarily Abandoned w/ CIBP @ 5563')  
Tubb: 6418'-6481' (66 holes) (Abandoned w/ CIBP @ 5880' & 5900')  
Abo: 7204'-7230' (54 holes) (Abandoned w/ CIBP @ 5880' & 5900')

Objective: Drill out all plugs, squeeze the Blinbry and acid stimulate the Tubb and Abo.

AFE: PA-12-4504

1. MIRU unit. Check pressure on well.
2. ND WH. NU BOP. PU and RIH w/ 3-7/8" bit, bit sub, and drill collars on 2-3/8" J-55 tubing to be used as work string to CIBP @ 5,563'. RU reverse unit and break circulation. Drill out CIBP or push to  $\pm$  5,880'. POOH.
3. RIH w/ CICR on WS and set at  $\pm$  5,550'. Sting into CICR.
4. MIRU cement Service Company. Establish injection rate into perforations. Pump cement as dictated by injection rate. Hesitate squeeze perforations per Monument office recommendations. Displace to bottom perf with 32 bbls of flush.
5. Sting out of CICR and POOH w/ WS.
6. PU and RIH w/ 3-7/8" bit, bit sub and drill collars on WS. Tag CICR. RU reverse unit and break circulation. Drill out CICR and cement to 5,880'. Test casing squeeze to 1000 psi. *If squeeze does not test, repeat step 3-6.*
7. Continue to drill out CIBP and cement at 5,900'. TIH and clean well out to 7,300'. POOH.
8. RIH w/ sonic hammer on 2-3/8" WS to 7230'.
9. MIRU acid services. Acidize the Abo (7204-7230) with 1500 gallons 20% NEFE and the Tubb (6418-6481) with 2000 gallons 20% NEFE, respectively, through the sonic hammer.
10. RU swab equipment and recover load and swab test for fluid entry and oil cut. Report results to Midland. RD swab equipment. *If unproductive, SI for future evaluation or plugging*
11. Kill well if necessary. TOH w/ sonic hammer and WS.
12. RIH w/ production tubing and rods as per the Monument office specifications.
13. RDMOPU. Return well to production and place into test for 10 days.

GL=3554'  
KB=3570'  
Spud:5/12/97

# Apache Corporation – Bertha Barber #16

## Wellbore Diagram – Proposed

Date : 10/30/2012

API: 30-025-33919

### Surface Location

R. Taylor



2140' FNL & 1650' FWL,  
Lot K Sec 5, T20S, R37E, Lea County, NM

### Surface Casing

13-3/8" 48# K-55 @ 490' w/ 545 sxs to surface

### Intermediate Casing

8-5/8" 24# & 28# @ 2429' w/ 980 sxs to surface

9/99: Sqz'd csg leak @ 3,758'-3,788' w/1600 sxs 800 sx foamed, 100 sx thix, 700 sx class "C" w/ adds; multiple attempts failed

9/99: Ran 7" csg patch @ 3,753'-3793'.

9/99: Ran 108 jts 4-1/2" tie-back string to surf, pmpd 450 sx class "C" neat, then stung into liner top.

6/97: 4-1/2"x 7" Liner Hanger @ 4812'

### Intermediate Casing II

7" 23# K-55 @ 5122' w/ 150 sxs

5/07: Perf Blinebry @ 5,604'-30',5684'-5730',5,744'-52', 56'-60', 70'-72', 80'-87', 98'-5,802'. (218 holes) Acidized w/ 8000 gal 15% HCl.  
TBD: SQZ Blinebry w/ XX sxs cement

7/07: Set CIBP @ 5,737'. Isolated fr/ 5,744'-5,802'. 3/08: DO CIBP & push down to 5,880'.

5/07: Set CIBP @ 5,900' w/10'cmt.

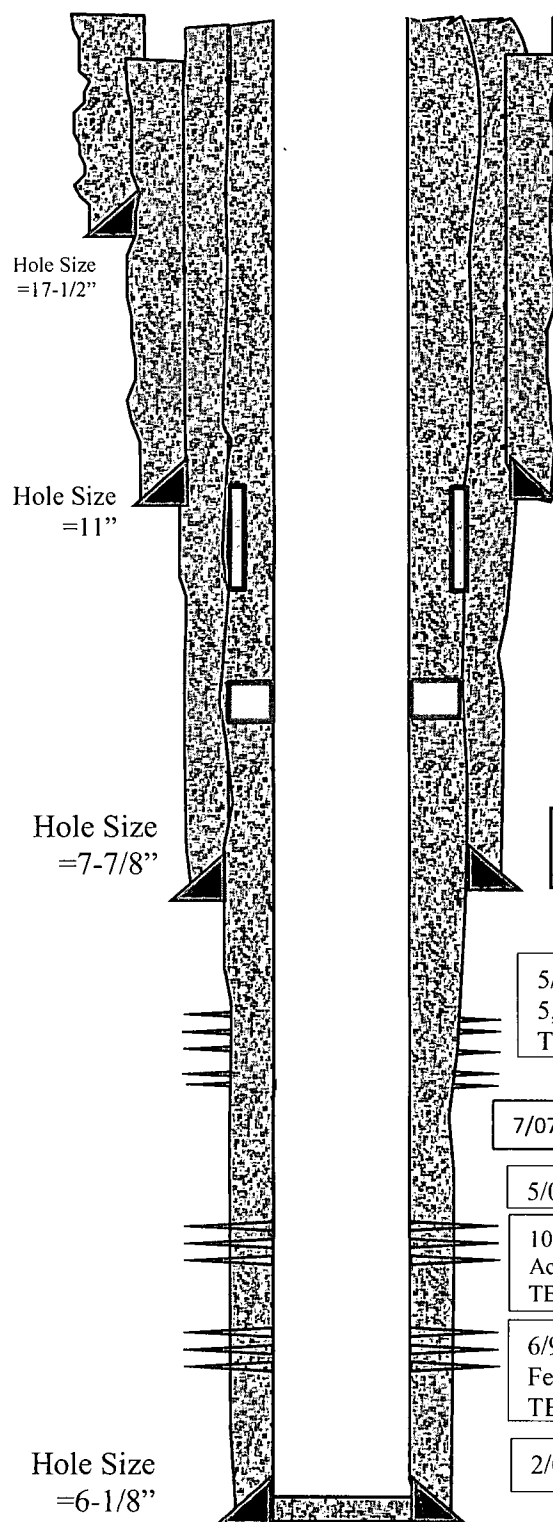
10/99: Perf Tubb @ 6418-6422, 6437-6439, 6442-6452, 6464-6481 w/ 1 jspf. (66 holes). Acidized w/ 3000 gal 15%. Frac'd w/ 33k gal Delta frac w/ 32.5k# 20/40 snd.  
TBD: Acidized w/ 2000 gallons 20% NEFE

6/97: Perf Abo @ 7,204 - 7,230' w/ 2 jspf (54 holes). Acidize w/2,000 gals 15% Ferchek  
TBD: Acidized w/ 1500 gallons 20% NEFE

2/05: Tight spot in csg @ 7,447'.

### Production Liner

4-1/2" 11.6# K-55 @ 7796' w/ 235 sxs to 4812'  
Liner Hanger @ 4812'



PBTD = 7,796'  
MD = 7,800'