

Submit 3 Copies To Appropriate District
Office
District I
1625 N. French Dr., Hobbs, NM 88240
District II
1301 W. Grand Ave., Artesia, NM 88210
District III
1000 Rio Brazos Rd., Aztec, NM 87410
District IV
1220 S. St. Francis Dr., Santa Fe, NM
87505

State of New Mexico
Energy, Minerals and Natural Resources

Form C-103
May 27, 2004

HOBBS OCD

OIL CONSERVATION DIVISION
1220 South St. Francis Dr.
Santa Fe, NM 87505

JAN 16 2013

WELL API NO. 30-025-01038
5. Indicate Type of Lease STATE <input checked="" type="checkbox"/> FEE <input type="checkbox"/>
6. State Oil & Gas Lease No. 030254
7. Lease Name or Unit Agreement Name State C A-C 1
8. Well Number 5
9. OGRID Number 20165
10. Pool name or Wildcat Bagley / Penn
11. Elevation (Show whether DR, RKB, RT, GR, etc.)

SUNDRY NOTICES AND REPORTS ON WELLS
(DO NOT USE THIS FORM FOR PROPOSALS TO DRILL OR TO DEEPEN OR PLUG BACK TO A
DIFFERENT RESERVOIR. USE "APPLICATION FOR PERMIT" (FORM C-101) FOR SUCH
PROPOSALS.)

1. Type of Well: Oil Well ☒ Gas Well ☐ Other ☐

2. Name of Operator
Samson Resources

3. Address of Operator
200 N. Loraine Ste. 1010 Midland TX. 79701

4. Well Location
Unit Letter C : 660 feet from the North line and 1980 feet from the West line
Section 2 Township 12-S Range 33-E NMPM County Lea

11. Elevation (Show whether DR, RKB, RT, GR, etc.)

Pit or Below-grade Tank Application ☐ or Closure ☐

Pit type _____ Depth to Groundwater _____ Distance from nearest fresh water well _____ Distance from nearest surface water N/A _____

Pit Liner Thickness: _____ mil Below-Grade Tank: Volume _____ bbls; Construction Material _____

12. Check Appropriate Box to Indicate Nature of Notice, Report or Other Data

NOTICE OF INTENTION TO:

PERFORM REMEDIAL WORK ☐ PLUG AND ABANDON ☒
TEMPORARILY ABANDON ☐ CHANGE PLANS ☐
PULL OR ALTER CASING ☐ MULTIPLE COMPL ☐
OTHER: ☐

SUBSEQUENT REPORT OF:

REMEDIAL WORK ☐ ALTERING CASING ☐
COMMENCE DRILLING OPNS. ☐ P AND A ☒
CASING/CEMENT JOB ☐
OTHER: ☐

13. Describe proposed or completed operations. (Clearly state all pertinent details, and give pertinent dates, including estimated date of starting any proposed work). SEE RULE 1103. For Multiple Completions: Attach wellbore diagram of proposed completion or recompletion.

1. Rih. Tbg. 7,891 circulate hole 9.5 mud laden fluid cap CIBP 25 sx. Cmt.

2B Perf. At 3,913 Sqz. 65 sx. Cmt. WOC & Tag.

3. Perf. At 2,200 Sqz. 65 sx. Cmt. WOC & Tag.

4. Perf. At 1,500 Sqz. 65 sx. Cmt. WOC & Tag.

5. Perf. At 368 Sqz. 140 sx. Cmt. WOC & Tag.

6. Perf. At 60' circulate 35 sx. Cmt.

7. Cut well head install dry hole marker.

2A. SPOT 25 SXS CMT @ 5100'

I hereby certify that the information above is true and complete to the best of my knowledge and belief. I further certify that any pit or below-grade tank has been/will be constructed or closed according to NMOCD guidelines ☒, a general permit ☐ or an (attached) alternative OCD-approved plan ☐.

SIGNATURE [Signature] TITLE Agent (Basic Energy Services) DATE 1-15-13

Type or print name:

E-mail address:

Telephone No. 432-563-3355

For State Use Only

APPROVED BY: [Signature] TITLE Compliance Officer DATE 1/17/2013

Conditions of Approval (if any):

Oil Conservation Division - Hobbs office: **Must be Notified
24 hours prior** to the beginning of Plugging Operations begin.

WELL NAME: State "C" A/C 1 #5 FIELD: Bagley OPERATOR: SHC Lse #: 030254
 STATE: NM COUNTY: Lea LOC: Sec 2-12S-33E/660'FNL & 1980' FWL 040579
 COMP DATE: 7/10/1952 SPUD DATE: 3/12/1952 FORMATION: Penn API: 30-025-01038
 TD: 11097' PBTD: 10825' ELEVATION: 4237 GL ZERO DATUM: 10 FT. ABOVE GL

PIPE RECORD								CEMENT & HOLE DATA				
CSG	OD	GRADE	THD	WT/FT	TOP	BTM	# JTS	BIT SIZE	DEP	SX	WT.	Top Cmt
Surf	13.375	H40		48.00#	Surf	318'		17.500		350		Surf
Int	9.625	J55		36.00#	Surf	3863'		12.250		3500		Surf
Prod	7.000		LT&C	23.00#	Surf	11096'		9.625		*1800		
	7.000		LT&C	26.00#								
	7.000		LT&C	29.00#								
Liner	4.500	N80	LT&C	11.60#	7941'		69			400	Cls H	TOL
	4.500	C75	LT&C	11.60#		10768'						
Tbg	2.875	L80										

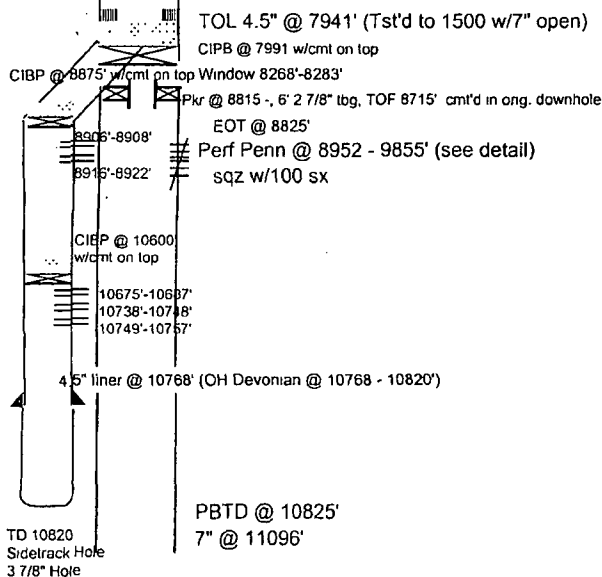
COMMENTS: *300 sx (TOC @ 8827'/Temp Svy) and perf 8815'-8817' and pump 1500 sx
 No record of TOC.
 *Ran csg inspection log Found holes in 7" csg
 Holes located at 3624', 3672', 4162', 4226', 5106', 5514',
 13.375" @ 3 5905' and 7210'.
 TOPS:
 ANHY 1705 DVNN 10688
 SALT 1810' WCMP 8374
 YATES 2485 CISCO 8870 GDS
 SA 3756 STRWN 9431 GDS
 GLOR 5122 ATOKA 9874 GDS
 TUBB 6510
 ABO 7266
 PENN 8605
 MISS 10212

SURFACE EQUIPMENT		PERFORATION RECORD					
Artificial Lift:		JSPF	DATE	TOP	BTM	ZONE	STATUS
Facility:			4/52	9059	9068	Penn	P&A'd
			9/64	8952	8957	Penn	P&A'd
			9/64	8983	8990	Penn	P&A'd
			9/64	9005	9012	Penn	P&A'd
			9/64	9306	9326	Penn	P&A'd
			3/70	9730	9855	Penn	P&A'd
		2	10/16/1983	10675	10687	Devonia	P&A'd
		2	10/22/1983	10738	10748	Devonia	P&A'd
		2	10/29/1983	10749	10757	Devonia	P&A'd
			10/83	10768	10820	Devonia	P&A'd
		2	10/20/2006	8916	8922	Penn	TA
		2	10/20/2006	8906	8908	Penn	TA
ENGINEER: Jeff Ross		GEOLOGIST: Nelson Moore					

STATUS:
 NOTE: Sidetrack: Set 4.5" @ 10768', Deepen 3 7/8" to 10820'. BHL is 24' South and 6' East of original BHL.
 PBTD @ 7856'
 CIBP @ 7891' w/cmt on top
 SRC WI%: SRC NRI%:
 BHT:
 ENGINEER: Jeff Ross

WELL HISTORY

4/52: Completed in Penn (9059-9068') - IP 530 BOPD/Cum 113 MBO
 9/64: Perf'd Penn (8952-9626'); Acidized w/ 6000 g acid
 Flow 100% wtr; Shut in well
 3/70: Squeezed off U. Penn and recompleat in L Penn
 Found csg damage; Unsuccessful; remained TA'd
 Cemented pkr in hole during attempt to repair csg
 9/83. Run 4.5" liner -- Sidetrack: See "NOTE:"
 Perf'd Devonian (10675-10687')
 Acid perfs w/ 500 g 15% NeHCl; Acid w/ 1500 g 10% NeHCl
 Perf Devonian (10738-10748)
 Acid 10738-48' w/ 1000 g 20% NeHCl
 Perf Devonian (10749-10757')
 Acid 10685-757' w/ 3000 g 20% Ne acid
 Spot 100 g 20% Ne acid @ 10819 & wash across OH 10768-10820'
 Acid OH 10785-10820 w/ 2000 g 10% NeHCl acid
 3/84: Acid OH 10768-10820' w/ 8000 g Mod 202 acid
 Ran sub pump
 2006 - Attempt to TS w/CIBP - Unable to get down w/GR
 10/2006: (8906'-8908', 8916'-8922') Acdz w/2000 gals 15% NeFe acid.
 TA'd



PREPARED BY: Eileen Schafer

OFFICE: (432) 683-7063

DATE: Feb 14, 1996
 Updated: 1/16/2008 RB

HOME:

2/14/2012 GLS

STATEAC proposed TA

WELL NAME: State "C" A/C 1 #5	FIELD: Bagley	OPERATOR: SHC	Lse #: 030254
STATE: NM	COUNTY: Lea	LOC: Sec 2-12S-33E/660'FNL & 1980' FWL	040579
COMP DATE: 7/10/1952	SPUD DATE: 3/12/1952	FORMATION: Penn	API: 30-025-01038
TD: 11097' PBTD: 10825'	ELEVATION: 4237 GL	ZERO DATUM: 10 FT. ABOVE GL	

Perf + 5g 35sxscmt 60' Cive dde to 500' am

13.375" @ 318

Perf + 5g 140sxscmt 368 to 220' w/cmt + Tag

Perf + 5g 65sxscmt 1200 to 1400 w/cmt + Tag

Perf + 5g 65sxscmt 2200 to 2700 w/cmt + Tag

9.625" @ 3863'

Perf + 5g 65sxscmt 3913 to 3763 w/cmt + Tag

25sxscmt 7891 to 7791

PBTD @ 7856'

CIBP @ 7891' w/cmt on top

SRC WI%:

BHT:

ENGINEER: Jeff Ross

GEOLOGIST: Nelson Moore

TOL 4.5" @ 7941' (Tst'd to 1500 w/7" open)

CIBP @ 7991' w/cmt on top

CIBP @ 8875' w/cmt on top Window 8268'-8283'

Pkr @ 8815' - 6' 2 7/8" lbg, TOF 8715' cmt'd in org. downhole

EOT @ 8825'

Perf Penn @ 8952 - 9855' (see detail)

sqz w/100 sx

8905'-8908'
8915'-8922'

CIBP @ 10600
w/cmt on top

10675'-10687'
10738'-10748'
10749'-10757'

4.5" liner @ 10768' (OH Devonian @ 10768 - 10820')

PBTD @ 10825'

7" @ 11096'

TD 10820
Sidetrack Hole
3 7/8" Hole

WELL HISTORY

- 4/52: Completed in Penn (9059-9068') - IP 530 BOPD/Cum 113 MBO
- 9/64: Perf'd Penn (8952-9626'); Acidized w/ 6000 g acid
Flow 100% wtr; Shut in well
- 3/70: Squeezed off U. Penn and recomple in L Penn
Found csg damage; Unsuccessful; remained TA'd
Cemented pkr in hole during attempt to repair csg
- 9/83: Run 4.5" liner -- Sidetrack: See "NOTE:"
Perf'd Devonian (10675-10687')
Acid perfs w/ 500 g 15% NeHCl; Acid w/ 1500 g 10% NeHCl
Perf Devonian (10738-10748)
Acid 10738-48' w/ 1000 g 20% NeHCl
Perf Devonian (10749-10757')
Acid 10685-757' w/ 3000 g 20% Ne acid
Spot 100 g 20% Ne acid @ 10819 & wash across OH 10768-10820'
Acid OH 10785-10820' w/ 2000 g 10% NeHCl acid
- 3/84: Acid OH 10768-10820' w/ 8000 g Mod 202 acid
Ran sub pump
- 2006 - Attempt to TS w/CIBP - Unable to get down w/GR
- 10/2006: (8906'-8908', 8916'-8922') Acdz w/2000 gals 15% NeFe acid.
TA'd

PREPARED BY: Eileen Schafer

OFFICE: (432) 683-7063

DATE: Feb 14, 1996

HOME:

Updated: 1/16/2008 RB

2/14/2012 GLS

STATEAC proposed TA