

District I
1625 N. French Dr., Hobbs, NM 88240
Phone: (575) 393-6161 Fax: (575) 393-0720
District II
811 S. First St., Artesia, NM 88210
Phone: (575) 748-1283 Fax: (575) 748-9720
District III
1000 Rio Brazos Road, Aztec, NM 87410
Phone: (505) 334-6178 Fax: (505) 334-6179
District IV
1220 S. St. Francis Dr., Sante Fe, NM 87505
Phone: (505) 476-3460 Fax: (505) 476-3462

HOBBS OCD

FEB 04 2013

RECEIVED

State of New Mexico
Energy, Minerals & Natural Resources
Department
OIL CONSERVATION DIVISION
1220 South St. Francis Dr.
Sante Fe, NM 87505

FORM C-102

Revised August 1, 2011

Submit one copy to appropriate

District Office

AMENDED REPORT

WELL LOCATION AND ACREAGE DEDICATION PLAT

¹ API Number 30-025-40964	² Pool Code 97900	³ Pool Name Red Hills; Bone Spring Upper Shale
⁴ Property Code 39673	⁵ Property Name CONDOR 32 STATE	
⁷ OGRID No. 7377	⁸ Operator Name EOG RESOURCES, INC.	⁶ Well Number #7H ⁹ Elevation 3320'

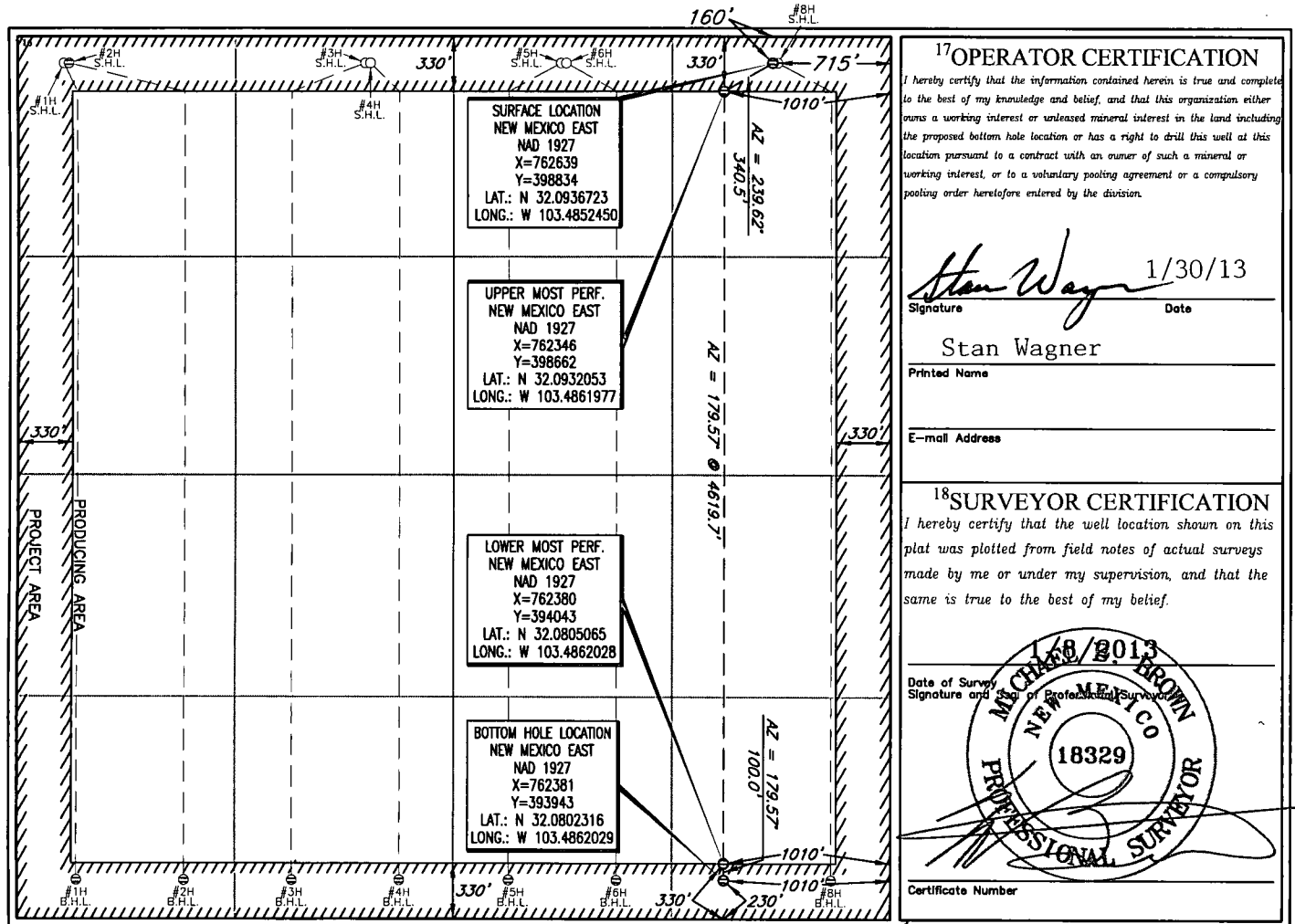
¹⁰Surface Location

UL or lot no.	Section	Township	Range	Lot Idn	Feet from the	North/South line	Feet from the	East/West line	County
A	32	25-S	34-E	-	160'	NORTH	715'	EAST	LEA

UL or lot no.	Section	Township	Range	Lot Idn	Feet from the	North/South line	Feet from the	East/West line	County
P	32	25-S	34-E	-	230'	SOUTH	1010'	EAST	LEA

¹² Dedicated Acres 640	¹³ Joint or Infill	¹⁴ Consolidation Code	¹⁵ Order No.
--------------------------------------	-------------------------------	----------------------------------	-------------------------

No allowable will be assigned to this completion until all interests have been consolidated or a non-standard unit has been approved by the division.



¹⁷OPERATOR CERTIFICATION

I hereby certify that the information contained herein is true and complete to the best of my knowledge and belief, and that this organization either owns a working interest or released mineral interest in the land including the proposed bottom hole location or has a right to drill this well at this location pursuant to a contract with an owner of such a mineral or working interest, or to a voluntary pooling agreement or a compulsory pooling order heretofore entered by the division.

Stan Wagner 1/30/13
Signature Date

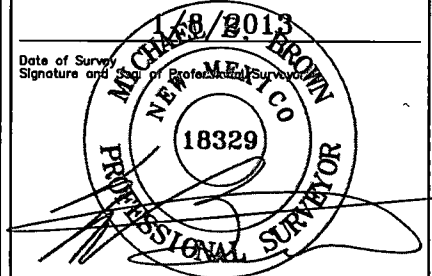
Stan Wagner
Printed Name

E-mail Address

¹⁸SURVEYOR CERTIFICATION

I hereby certify that the well location shown on this plat was plotted from field notes of actual surveys made by me or under my supervision, and that the same is true to the best of my belief.

1/28/2013
Date of Survey
Signature and Seal of Professional Surveyor



Certificate Number

K2 FEB 05 2013

Permit Information:

Well Name: Condor 32 State No. 7H

Location:

SL: 160' FNL & 715' FEL, Section 32, T-25-S, R-34-E, Lea Co., N.M.

BHL: 230' FSL & 1010' FEL, Section 32, T-25-S, R-34-E, Lea Co., N.M.

Casing Program:

Hole Size	Interval	Csg OD	Weight	Grade	Conn	DF _{min} Collapse	DF _{min} Burst	DF _{min} Tension
17.5"	0 – 960'	13.375"	54.5#	J55	STC	1.125	1.25	1.60
12.25"	0-4000'	9.625"	40#	J55	LTC	1.125	1.25	1.60
12.25"	4000' – 5150'	9.625"	40#	HCK-55	LTC	1.125	1.25	1.60
8.75"	0'-14,459'	5.5"	17#	HCP-110	LTC	1.125	1.25	1.60

Cement Program:

Depth	No. Sacks	Wt. ppg	Yld Ft ³ /ft	Slurry Description
960'	300	13.5	1.73	Class C + 4.0% Bentonite + 0.6% CD-32 + 0.5% CaCl ₂ + 0.25 lb/sk Cello-Flake (TOC @ Surface)
	300	14.8	1.34	Class C + 0.6% FL-62 + 0.25 lb/sk Cello-Flake + 0.2% Sodium Metasilicate
5,150'	825	12.7	2.22	Class 'C' + 1.50% R-3 + 0.25 lb/sk Cello-Flake + 2.0% Sodium Metasilicate + 10% Salt + 0.005 lb/sk Static Free
	200	14.8	1.32	Tail: Class 'C' + 0.25 lb/sk Cello Flake + 0.005 lb/sk Static Free
14,459'	375	10.8	3.67	60:40:0 Class C + 15.0 pps BA-90 + 4% MPA-5 + 3.0% SMS + 5.0% A-10 + 1.0% BA-10A + 0.80% ASA-301 + 2.55% R-21 + 8.0 pps LCM-1
	400	11.8	2.38	50:50:10 Class H + 0.80% FL-52 + 0.30% ASA-301 + 0.40% SMS + 2.0% Salt + 0.30% R-21 + 3.0 pps LCM-1 + 0.25 pps Celloflake
	1300	14.2	1.28	50:50:2 Class H + 0.65% FL-52 + 0.45% CD-32 + 0.10% SMS + 2.0% Salt

Mud Program:

Depth	Type	Weight (ppg)	Viscosity	Water Loss
0 – 960'	Fresh - Gel	8.6-8.8	28-34	N/c
960' – 5,150'	Brine	10.0-10.2	28-34	N/c
5,150' – 9,131'	Cut Brine	8.4-9.0	28-34	N/c
KOP – 14,459' Lateral	Cut Brine	9.0-9.5	40-42	N/c

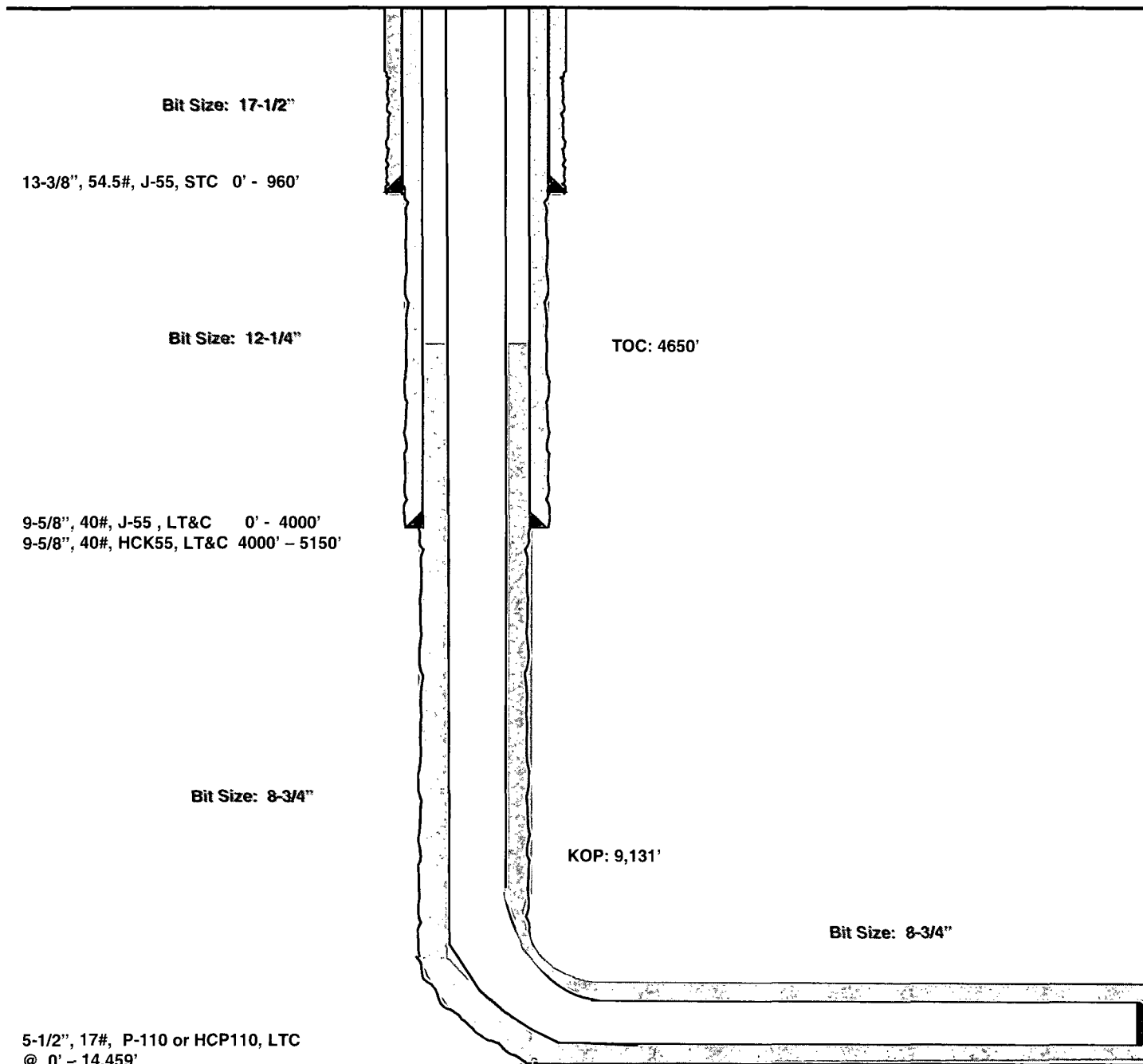
Condor 32 State #7H
Pitchfork Ranch
Lea County, New Mexico

160' FNL
715' FEL
Section 32
T-25-S, R-34-E

Proposed Wellbore

KB: 3,350'
GL: 3,320'

API: 30-025-

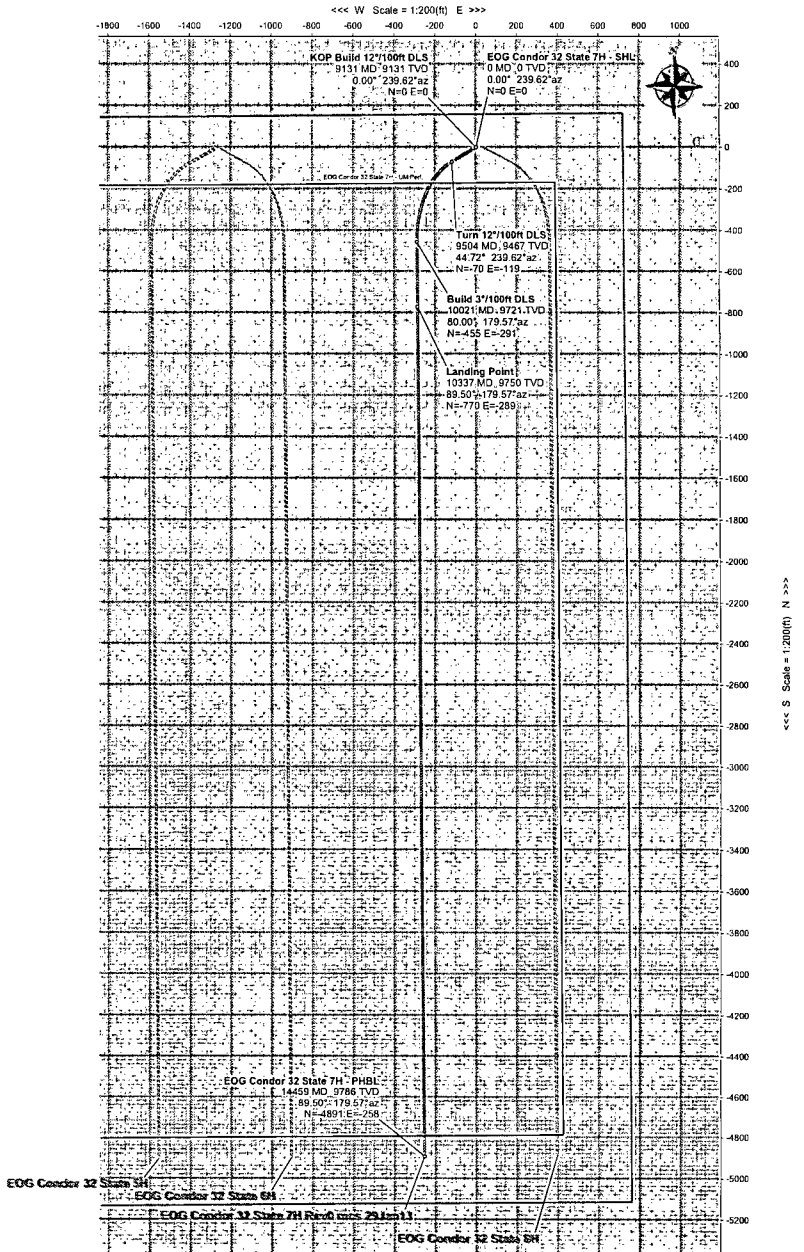
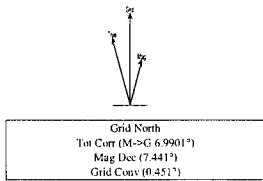


Lateral: 14,459' MD, 9,786' TVD
BH Location: 230' FSL & 1010' FEL
Section 32
T-25-S, R-34-E

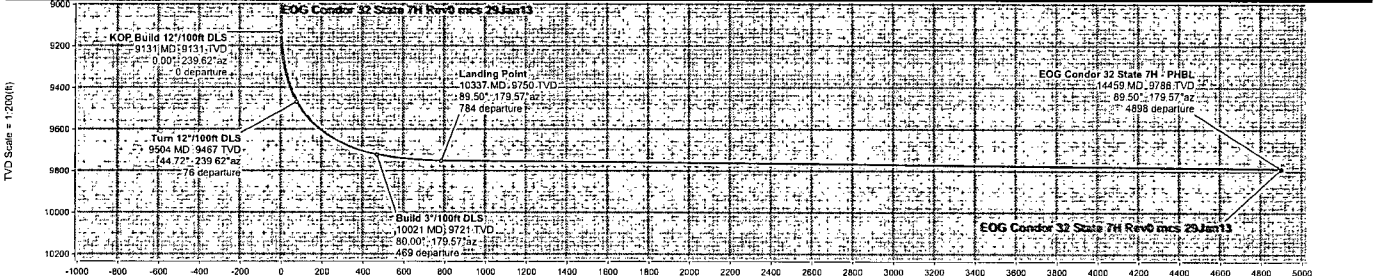
WELL	FIELD	STRUCTURE
Condor 32 State 7H	Lea County, NM (NAD 27)	Cactus 123

Magnetic Parameters Model: IGRM 2012 Dip: 59.000° Mag Dec: 7.441°				Date: January 23, 2013 PS: 28309.267				Survey Location Lat: N 32 5 37.217 Lon: W 103 29 6 887				NAD27 New Mexico State Plane, Eastern Zone, US Feet Northing: 762639.00 BLS Easting: 398834.00 BLS Grid Conv: 0.451° Scale Fact: 0.999999810				Miscellaneus Skel: Condor 32 State 7H Plan: Rev0 mcs 25Jan13 TVD Ref: RKR(3500 above 1) Svy Date: January 23, 2013			
--	--	--	--	---	--	--	--	--	--	--	--	--	--	--	--	--	--	--	--

EOG Condor 32 State 7H - LAL Pad
EOG Condor 32 State 7H - LAL Pad
EOG Condor 32 State 7H - LAL Pad
EOG Condor 32 State 7H - LAL Pad
EOG Condor 32 State 7H - LAL Pad
EOG Condor 32 State 7H - LAL Pad
EOG Condor 32 State 7H - LAL Pad
EOG Condor 32 State 7H - LAL Pad
EOG Condor 32 State 7H - LAL Pad
EOG Condor 32 State 7H - LAL Pad
EOG Condor 32 State 7H - LAL Pad
EOG Condor 32 State 7H - LAL Pad
EOG Condor 32 State 7H - LAL Pad
EOG Condor 32 State 7H - LAL Pad
EOG Condor 32 State 7H - LAL Pad
EOG Condor 32 State 7H - LAL Pad
EOG Condor 32 State 7H - LAL Pad



Comments	Survey MD	Inc.	Azim	TVD	SSTVD	VS	NS	EW	Longitude	Latitude	Easting	Northing	DLS	Tool Face
SHL	0.00	0.00	239.62	0.00	-3350.00	0.00	0.00	0.00	W 103 29 6.887	N 32 5 37.217	762639.00	398834.00	0.00	239.62
KOP Build 12°/100ft DLS	9131.38	0.00	239.62	9131.38	5781.38	0.00	0.00	0.00	W 103 29 6.887	N 32 5 37.217	762639.00	398834.00	0.00	239.62
Turn 12°/100ft DLS	9504.05	44.72	239.62	9467.34	6117.34	76.08	-69.89	-119.22	W 103 29 8.280	N 32 5 36.535	762519.78	398764.11	12.00	-75.09
Build 3°/100ft DLS	10020.79	80.00	179.57	9721.06	6371.06	469.29	-454.57	-291.28	W 103 29 10.315	N 32 5 32.742	762347.72	398379.43	12.00	0.00
Landing Point	10337.45	89.50	179.57	9750.00	6400.00	783.69	-769.54	-288.92	W 103 29 10.316	N 32 5 29.625	762350.09	398064.47	3.00	151.86
PHBL	14459.25	89.50	179.57	9786.00	6436.00	4897.87	-4891.07	-258.00	W 103 29 10.333	N 32 4 48.838	762381.00	393943.00	0.00	



Drawn By: MSB
 Date Created: January 29, 2013 05:39:02 PM
 Checked By:
 Checked Date:
 Approved By:
 Approved Date:



EOG Condor 32 State 7H Rev0 mcs 23Jan13 Proposal Geodetic Report



(Non-Def Plan)

Report Date: January 29, 2013 - 05:36 PM
Client: EOG Resources
Field: NM Lea County (NAD 27)
Structure / Slot: EOG Condor 32 State 7H / EOG Condor 32 State 7H
Well: EOG Condor 32 State 7H
Borehole: Original Borehole
UWI / API#: Unknown / Unknown
Survey Name: EOG Condor 32 State 7H Rev0 mcs 29Jan13
Survey Date: January 23, 2013
Tort / AHD / DDI / ERD Ratio: 116.230 ° / 5015.017 ft / 5.935 / 0.512
Coordinate Reference System: NAD27 New Mexico State Plane, Eastern Zone, US Feet
Location Lat / Long: N 32° 5' 37.21734", W 103° 29' 6.88735"
Location Grid N/E / Y/X: N 398834.000 ftUS, E 762639.000 ftUS
CRS Grid Convergence Angle: 0.4506 °
Grid Scale Factor: 0.9999881

Survey / DLS Computation: Minimum Curvature / Lubinski
Vertical Section Azimuth: 183.020 ° (Grid North)
Vertical Section Origin: 0.000 ft, 0.000 ft
TVD Reference Datum: RKB
TVD Reference Elevation: 3350.000 ft above
Seabed / Ground Elevation: 3320.000 ft above
Magnetic Declination: 7.441 °
Total Gravity Field Strength: 998.4836mgm (9.80665 Based)
Total Magnetic Field Strength: 48369.206 nT
Magnetic Dip Angle: 59.998 °
Declination Date: January 23, 2013
Magnetic Declination Model: BGGM 2012
North Reference: Grid North
Grid Convergence Used: 0.4506 °
Total Corr Mag North->Grid North: 6.9901 °
Local Coord Referenced To: Structure Reference Point

Comments	MD (ft)	Incl (°)	Azim Grid (°)	TVD (ft)	VSEC (ft)	NS (ft)	EW (ft)	DLS (°/100H)	Northing (ftUS)	Easting (ftUS)	Latitude (N/S ° ' ")	Longitude (E/W ° ' ")
EOG Condor 32 State 7H - SHL	0.00	0.00	239.62	0.00	0.00	0.00	0.00	0.00	398834.00	762639.00	N 32 5 37.22 W 103 29 6.89	
	100.00	0.00	239.62	100.00	0.00	0.00	0.00	0.00	398834.00	762639.00	N 32 5 37.22 W 103 29 6.89	
	200.00	0.00	239.62	200.00	0.00	0.00	0.00	0.00	398834.00	762639.00	N 32 5 37.22 W 103 29 6.89	
	300.00	0.00	239.62	300.00	0.00	0.00	0.00	0.00	398834.00	762639.00	N 32 5 37.22 W 103 29 6.89	
	400.00	0.00	239.62	400.00	0.00	0.00	0.00	0.00	398834.00	762639.00	N 32 5 37.22 W 103 29 6.89	
	500.00	0.00	239.62	500.00	0.00	0.00	0.00	0.00	398834.00	762639.00	N 32 5 37.22 W 103 29 6.89	
	600.00	0.00	239.62	600.00	0.00	0.00	0.00	0.00	398834.00	762639.00	N 32 5 37.22 W 103 29 6.89	
	700.00	0.00	239.62	700.00	0.00	0.00	0.00	0.00	398834.00	762639.00	N 32 5 37.22 W 103 29 6.89	
	800.00	0.00	239.62	800.00	0.00	0.00	0.00	0.00	398834.00	762639.00	N 32 5 37.22 W 103 29 6.89	
	900.00	0.00	239.62	900.00	0.00	0.00	0.00	0.00	398834.00	762639.00	N 32 5 37.22 W 103 29 6.89	
	1000.00	0.00	239.62	1000.00	0.00	0.00	0.00	0.00	398834.00	762639.00	N 32 5 37.22 W 103 29 6.89	
	1100.00	0.00	239.62	1100.00	0.00	0.00	0.00	0.00	398834.00	762639.00	N 32 5 37.22 W 103 29 6.89	
	1200.00	0.00	239.62	1200.00	0.00	0.00	0.00	0.00	398834.00	762639.00	N 32 5 37.22 W 103 29 6.89	
	1300.00	0.00	239.62	1300.00	0.00	0.00	0.00	0.00	398834.00	762639.00	N 32 5 37.22 W 103 29 6.89	
	1400.00	0.00	239.62	1400.00	0.00	0.00	0.00	0.00	398834.00	762639.00	N 32 5 37.22 W 103 29 6.89	
	1500.00	0.00	239.62	1500.00	0.00	0.00	0.00	0.00	398834.00	762639.00	N 32 5 37.22 W 103 29 6.89	
	1600.00	0.00	239.62	1600.00	0.00	0.00	0.00	0.00	398834.00	762639.00	N 32 5 37.22 W 103 29 6.89	
	1700.00	0.00	239.62	1700.00	0.00	0.00	0.00	0.00	398834.00	762639.00	N 32 5 37.22 W 103 29 6.89	
	1800.00	0.00	239.62	1800.00	0.00	0.00	0.00	0.00	398834.00	762639.00	N 32 5 37.22 W 103 29 6.89	
	1900.00	0.00	239.62	1900.00	0.00	0.00	0.00	0.00	398834.00	762639.00	N 32 5 37.22 W 103 29 6.89	
	2000.00	0.00	239.62	2000.00	0.00	0.00	0.00	0.00	398834.00	762639.00	N 32 5 37.22 W 103 29 6.89	
	2100.00	0.00	239.62	2100.00	0.00	0.00	0.00	0.00	398834.00	762639.00	N 32 5 37.22 W 103 29 6.89	
	2200.00	0.00	239.62	2200.00	0.00	0.00	0.00	0.00	398834.00	762639.00	N 32 5 37.22 W 103 29 6.89	
	2300.00	0.00	239.62	2300.00	0.00	0.00	0.00	0.00	398834.00	762639.00	N 32 5 37.22 W 103 29 6.89	
	2400.00	0.00	239.62	2400.00	0.00	0.00	0.00	0.00	398834.00	762639.00	N 32 5 37.22 W 103 29 6.89	
	2500.00	0.00	239.62	2500.00	0.00	0.00	0.00	0.00	398834.00	762639.00	N 32 5 37.22 W 103 29 6.89	
	2600.00	0.00	239.62	2600.00	0.00	0.00	0.00	0.00	398834.00	762639.00	N 32 5 37.22 W 103 29 6.89	
	2700.00	0.00	239.62	2700.00	0.00	0.00	0.00	0.00	398834.00	762639.00	N 32 5 37.22 W 103 29 6.89	
	2800.00	0.00	239.62	2800.00	0.00	0.00	0.00	0.00	398834.00	762639.00	N 32 5 37.22 W 103 29 6.89	
	2900.00	0.00	239.62	2900.00	0.00	0.00	0.00	0.00	398834.00	762639.00	N 32 5 37.22 W 103 29 6.89	
	3000.00	0.00	239.62	3000.00	0.00	0.00	0.00	0.00	398834.00	762639.00	N 32 5 37.22 W 103 29 6.89	
	3100.00	0.00	239.62	3100.00	0.00	0.00	0.00	0.00	398834.00	762639.00	N 32 5 37.22 W 103 29 6.89	
	3200.00	0.00	239.62	3200.00	0.00	0.00	0.00	0.00	398834.00	762639.00	N 32 5 37.22 W 103 29 6.89	
	3300.00	0.00	239.62	3300.00	0.00	0.00	0.00	0.00	398834.00	762639.00	N 32 5 37.22 W 103 29 6.89	
	3400.00	0.00	239.62	3400.00	0.00	0.00	0.00	0.00	398834.00	762639.00	N 32 5 37.22 W 103 29 6.89	
	3500.00	0.00	239.62	3500.00	0.00	0.00	0.00	0.00	398834.00	762639.00	N 32 5 37.22 W 103 29 6.89	
	3600.00	0.00	239.62	3600.00	0.00	0.00	0.00	0.00	398834.00	762639.00	N 32 5 37.22 W 103 29 6.89	
	3700.00	0.00	239.62	3700.00	0.00	0.00	0.00	0.00	398834.00	762639.00	N 32 5 37.22 W 103 29 6.89	
	3800.00	0.00	239.62	3800.00	0.00	0.00	0.00	0.00	398834.00	762639.00	N 32 5 37.22 W 103 29 6.89	
	3900.00	0.00	239.62	3900.00	0.00	0.00	0.00	0.00	398834.00	762639.00	N 32 5 37.22 W 103 29 6.89	
	4000.00	0.00	239.62	4000.00	0.00	0.00	0.00	0.00	398834.00	762639.00	N 32 5 37.22 W 103 29 6.89	
	4100.00	0.00	239.62	4100.00	0.00	0.00	0.00	0.00	398834.00	762639.00	N 32 5 37.22 W 103 29 6.89	
	4200.00	0.00	239.62	4200.00	0.00	0.00	0.00	0.00	398834.00	762639.00	N 32 5 37.22 W 103 29 6.89	
	4300.00	0.00	239.62	4300.00	0.00	0.00	0.00	0.00	398834.00	762639.00	N 32 5 37.22 W 103 29 6.89	
	4400.00	0.00	239.62	4400.00	0.00	0.00	0.00	0.00	398834.00	762639.00	N 32 5 37.22 W 103 29 6.89	
	4500.00	0.00	239.62	4500.00	0.00	0.00	0.00	0.00	398834.00	762639.00	N 32 5 37.22 W 103 29 6.89	
	4600.00	0.00	239.62	4600.00	0.00	0.00	0.00	0.00	398834.00	762639.00	N 32 5 37.22 W 103 29 6.89	
	4700.00	0.00	239.62	4700.00	0.00	0.00	0.00	0.00	398834.00	762639.00	N 32 5 37.22 W 103 29 6.89	
	4800.00	0.00	239.62	4800.00	0.00	0.00	0.00	0.00	398834.00	762639.00	N 32 5 37.22 W 103 29 6.89	
	4900.00	0.00	239.62	4900.00	0.00	0.00	0.00	0.00	398834.00	762639.00	N 32 5 37.22 W 103 29 6.89	
	5000.00	0.00	239.62	5000.00	0.00	0.00	0.00	0.00	398834.00	762639.00	N 32 5 37.22 W 103 29 6.89	
	5100.00	0.00	239.62	5100.00	0.00	0.00	0.00	0.00	398834.00	762639.00	N 32 5 37.22 W 103 29 6.89	
	5200.00	0.00	239.62	5200.00	0.00	0.00	0.00	0.00	398834.00	762639.00	N 32 5 37.22 W 103 29 6.89	
	5300.00	0.00	239.62	5300.00	0.00	0.00	0.00	0.00	398834.00	762639.00	N 32 5 37.22 W 103 29 6.89	
	5400.00	0.00	239.62	5400.00	0.00	0.00	0.00	0.00	398834.00	762639.00	N 32 5 37.22 W 103 29 6.89	
	5500.00	0.00	239.62	5500.00	0.00	0.00	0.00	0.00	398834.00	762639.00	N 32 5 37.22 W 103 29 6.89	
	5600.00	0.00	239.62	5600.00	0.00	0.00	0.00	0.00	398834.00	762639.00	N 32 5 37.22 W 103 29 6.89	
	5700.00	0.00	239.62	5700.00	0.00	0.00	0.00	0.00	398834.00	762639.00	N 32 5 37.22 W 103 29 6.89	
	5800.00	0.00	239.62	5800.00	0.00	0.00	0.00	0.00	398834.00	762639.00	N 32 5 37.22 W 103 29 6.89	
	5900.00	0.00	239.62	5900.00	0.00	0.00	0.00	0.00	398834.00	762639.00	N 32 5 37.22 W 103 29 6.89	
	6000.00	0.00	239.62	6000.00	0.00	0.00	0.00	0.00	398834.00	762639.00	N 32 5 37.22 W 103 29 6.89	
	6100.00	0.00	239.62	6100.00	0.00	0.00	0.00	0.00	398834.00	762639.00	N 32 5 37.22 W 103 29 6.89	
	6200.00	0.00	239.62	6200.00	0.00	0.00	0.00	0.00	398834.00	762639.00	N 32 5 37.22 W 103 29 6.89	
	6300.00	0.00	239.62	6300.00	0.00	0.00	0.00	0.00	398834.00	762639.00	N 32 5 37.22 W 103 29 6.89	
	6400.00	0.00	239.62	6400.00	0.00	0.00	0.00	0.00	398834.00	762639.00	N 32 5 37.22 W 103 29 6.89	

Comments	MD (ft)	Incl (°)	Azim Grid (°)	TVD (ft)	VSEC (ft)	NS (ft)	EW (ft)	DLS (°/100ft)	Northing (ftUS)	Easting (ftUS)	Latitude (N/S ° ' ")	Longitude (E/W ° ' ")
----------	---------	----------	---------------	----------	-----------	---------	---------	---------------	-----------------	----------------	----------------------	-----------------------

Survey Type: Non-Def Plan

Survey Error Model: ISCWSA Rev 0 *** 3-D 95.000% Confidence 2.7955 sigma

Survey Program:

Description	MD From (ft)	MD To (ft)	EOU Freq (ft)	Hole Size (in)	Casing Diameter (in)	Survey Tool Type	Borehole / Survey
	0.000	30.000	1/100.000	30.000	30.000	SLB_MWD-STD-Depth Only	Original Borehole / EOG Condor 32 State 7H Rev0 mcs 29Jan13
	30.000	14459.252	1/100.000	30.000	30.000	SLB_MWD-STD	Original Borehole / EOG Condor 32 State 7H Rev0 mcs 29Jan13

**EOG RESOURCES, INC.
CONDOR 32 STATE #7H**

Hydrogen Sulfide Plan Summary

- A. All personnel shall receive proper H₂S training in accordance with Onshore Order III.C.3.a.
- B. Briefing Area: two perpendicular areas will be designated by signs and readily accessible.
- C. Required Emergency Equipment:

- Well control equipment
 - a. Flare line 150' from wellhead to be ignited by flare gun.
 - b. Choke manifold with a remotely operated choke.
 - c. Mud/gas separator

- Protective equipment for essential personnel.

Breathing apparatus:

- a. Rescue Packs (SCBA) — 1 unit shall be placed at each breathing area, 2 shall be stored in the safety trailer.
- b. Work/Escapes packs — 4 packs shall be stored on the rig floor with sufficient air hose not to restrict work activity.
- c. Emergency Escape Packs — 4 packs shall be stored in the doghouse for emergency evacuation.

Auxiliary Rescue Equipment:

- a. Stretcher
- b. Two OSHA full body harness
- c. 100 ft 5/8 inch OSHA approved rope
- d. 1-20# class ABC fire extinguisher

- H₂S detection and monitoring equipment:

The stationary detector with three sensors will be placed in the upper dog house if equipped, set to visually alarm @ 10 ppm and audible @ 14 ppm. Calibrate a minimum of every 30 days or as needed. The sensors will be placed in the following places: Rig floor / Bell nipple / End of flow line or where well bore fluid is being discharged.

(Gas sample tubes will be stored in the safety trailer)

- Visual warning systems.
 - a. One color code condition sign will be placed at the entrance to the site reflecting the possible conditions at the site.
 - b. A colored condition flag will be on display, reflecting the current condition at the site at the time.
 - c. Two wind socks will be placed in strategic locations, visible from all angles.

**EOG RESOURCES, INC.
CONDOR 32 STATE #7H**

- **Mud program:**
The mud program has been designed to minimize the volume of H₂S circulated to surface. The operator will have the necessary mud products to minimize hazards while drilling in H₂S bearing zones.

- **Metallurgy:**
All drill strings, casings, tubing, wellhead, blowout preventer, drilling spool, kill lines, choke manifold and lines, and valves shall be suitable for H₂S service.

- **Communication:**
Communication will be via cell phones and land lines where available.

Emergency Assistance Telephone List

**EOG RESOURCES, INC.
CONDOR 32 STATE #7H**

PUBLIC SAFETY: **911 or**

Lea County Sheriff's Department	(575) 396-3611
Rod Coffman	
Fire Department:	
Carlsbad	(575) 885-3125
Artesia	(575) 746-5050
Hospitals:	
Carlsbad	(575) 887-4121
Artesia	(575) 748-3333
Hobbs	(575) 392-1979
Dept. of Public Safety/Carlsbad	(575) 748-9718
Highway Department	(575) 885-3281
New Mexico Oil Conservation	(575) 476-3440
U.S. Dept. of Labor	(575) 887-1174

EOG Resources, Inc.

EOG / Midland	Office (432) 686-3600
---------------	-----------------------

Company Drilling Consultants:

Danny Kiser Will Henderson	Cell (432) 894-3417
Larry King	

Drilling Engineer

Steve Munsell	Office (432) 686-3609
	Cell (432) 894-1256

Operations Manager

Travis Lain	Office (432) 686-3740
	Cell (432) 254-3521

Drilling Superintendents

Ron Welch	Office (432) 686-3695
	Cell (432) 386-0592
Barney Thompson	Office (432) 686-3678
	Cell (432) 254-9056

Cactus Drilling

Cactus Drilling	Office (580) 799-2752
Cactus 123 Drilling Rig	Rig (432) 894-3417

Tool Pusher:

Jack Herndon	Cell (405) 519-6552
Larry Slife	Cell (405) 250-6368

Safety

James Fischer (HSE Manager)	Office (432) 686-3747
	Cell (817) 253-3725
Brian Chandler	Cell (806) 777-8814
Terry Maxwell (Consultant)	Cell (432) 349-6926