

DISTRICT I
1625 N. French Dr., Hobbs, NM 88240
Phone (505) 593-5161 Fax: (505) 393-0720

DISTRICT II
811 S. First St., Artesia, NM 88210
Phone (505) 745-1253 Fax: (505) 745-5720

DISTRICT III
1000 Rio Brazos Rd., Aztec, NM 87410
Phone (505) 334-6176 Fax: (505) 334-6170

DISTRICT IV
1220 S. St. Francis Dr., Santa Fe, NM 87505
Phone (505) 476-3460 Fax: (505) 476-5465

State of New Mexico
Energy, Minerals and Natural Resources Department

Form C-102
Revised August 1, 2011

Submit one copy to appropriate
District Office

OIL CONSERVATION DIVISION
1220 South St. Francis Dr.
Santa Fe, New Mexico 87505

WELL LOCATION AND ACREAGE DEDICATION PLAT

☐ AMENDED REPORT

API Number 30-025-41112	Pool Code 23000	Pool Name Eunice Monument: Grayberg San Andres
Property Code 302708	Property Name NMGSAU	Well Number 2H
GRID No. 873	Operator Name APACHE CORPORATION	Elevation 3633'

Surface Location

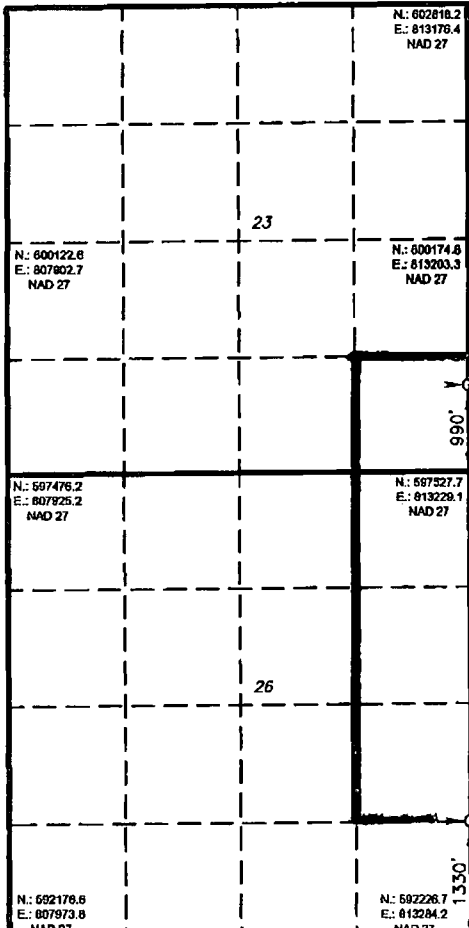
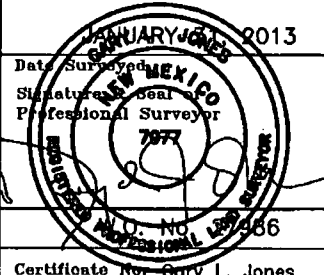
UL or lot No.	Section	Township	Range	Lot Idn	Feet from the	North/South line	Feet from the	East/West line	County
I	26	19 S	36 E		1330	SOUTH	10	EAST	LEA

Bottom Hole Location If Different From Surface

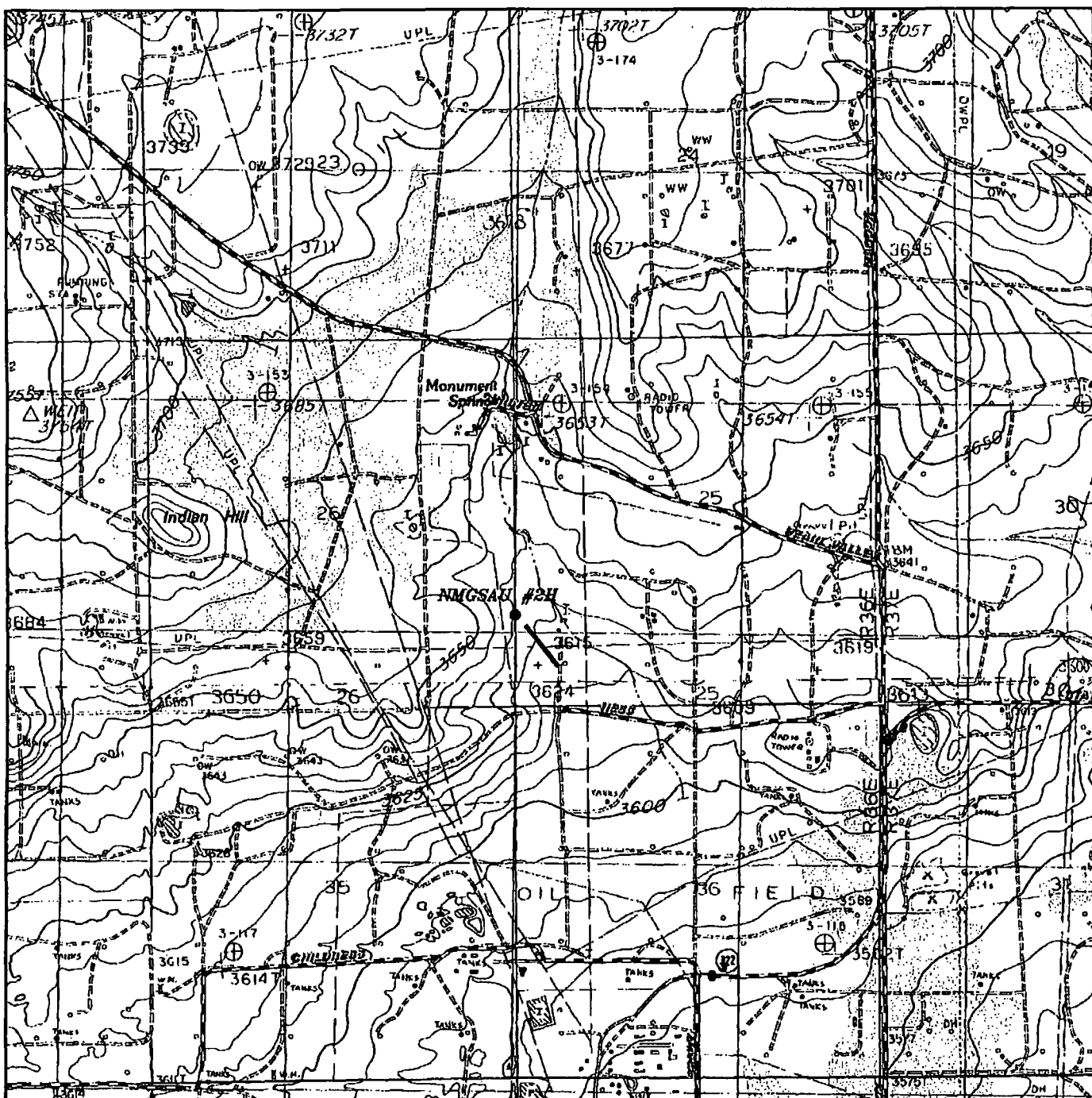
UL or lot No.	Section	Township	Range	Lot Idn	Feet from the	North/South line	Feet from the	East/West line	County
P	23	19 S	36 E		990	SOUTH	10	EAST	LEA

Dedicated Acres 160	Joint or Infill	Consolidation Code	Order No.
-------------------------------	-----------------	--------------------	-----------

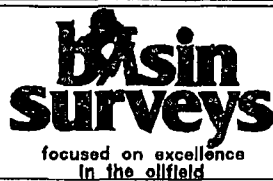
NO ALLOWABLE WILL BE ASSIGNED TO THIS COMPLETION UNTIL ALL INTERESTS HAVE BEEN CONSOLIDATED
OR A NON-STANDARD UNIT HAS BEEN APPROVED BY THE DIVISION

<p>PROPOSED BOTTOM HOLE LOCATION Lat - N 32°38'28.12" Long - W 103°18'58.77" NMSPCE- N 598579.5 E 854390.6 (NAD-83) Lat - N 32°38'28.69" Long - W 103°18'57.03" NMSPCE- N 598517.2 E 813209.2 (NAD-27)</p>		<p>OPERATOR CERTIFICATION I hereby certify that the information contained herein is true and complete to the best of my knowledge and belief, and that this organization either owns a working interest or unleased mineral interest in the land including the proposed bottom hole location or has a right to drill this well at this location pursuant to a contract with an owner of such a mineral or working interest, or to a voluntary pooling agreement or a compulsory pooling order heretofore entered by the division. <i>Vicki Brown</i> 4/10/13 Signature Date Vicki Brown Printed Name vicki.brown@apachecorp.com Email Address</p>
<p>SURFACE LOCATION Lat - N 32°37'40.03" Long - W 103°18'58.73" NMSPCE- N 593618.4 E 854441.5 (NAD-83) Lat - N 32°37'39.60" Long - W 103°18'58.99" NMSPCE- N 593556.1 E 813259.9 (NAD-27)</p>		<p>SURVEYOR CERTIFICATION I hereby certify that the well location shown on this plat was plotted from field notes of actual surveys made by me or under my supervision, and that the same is true and correct to the best of my belief.  Date Surveyed Signature of Professional Surveyor Professional Surveyor Certificate No. Gary L. Jones 7977 BASIN SURVEYS 27986</p>

APR 15 2013



NMGSAU #2H
 Located 1330' FSL and 10' FEL
 Section 26, Township 19 South, Range 36 East,
 N.M.P.M., Lea County, New Mexico.



P.O. Box 1786
 1120 N. West County Rd.
 Hobbs, New Mexico 88241
 (575) 393-7316 - Office
 (575) 392-2206 - Fax
 basin-surveys.com

W.O. Number: JMS 27986

Survey Date: 01-31-2013

Scale: 1" = 2000'

Date: 02-11-2013

APACHE
 CORPORATION