

District I
1625 N. French Dr., Hobbs, NM 88240
Phone: (575) 393-6161 Fax: (575) 393-0720
District II
811 S. First St., Artesia, NM 88210
Phone: (575) 748-1283 Fax: (575) 748-9720
District III
1000 Rio Brazos Road, Aztec, NM 87410
Phone: (505) 334-6178 Fax: (505) 334-6170
District IV
1220 S. St. Francis Dr., Santa Fe, NM 87505
Phone: (505) 476-3460 Fax: (505) 476-3462

State of New Mexico
Energy, Minerals & Natural Resources
Department
OIL CONSERVATION DIVISION
1220 South St. Francis Dr.
Santa Fe, NM 87505

FORM C-102

Revised August 1, 2011

Submit one copy to appropriate

District Office

☐ AMENDED REPORT

WELL LOCATION AND ACREAGE DEDICATION PLAT

¹ API Number 30-025-41113	² Pool Code 28434	³ Pool Name Grama Ridge; Bone Spring N
⁴ Property Code 39819	⁵ Property Name RANGER 33 STATE COM	
⁶ OGRI No. 228937	⁸ Operator Name MATADOR PRODUCTION COMPANY	⁷ Well Number #1H
		⁹ Elevation 3716'

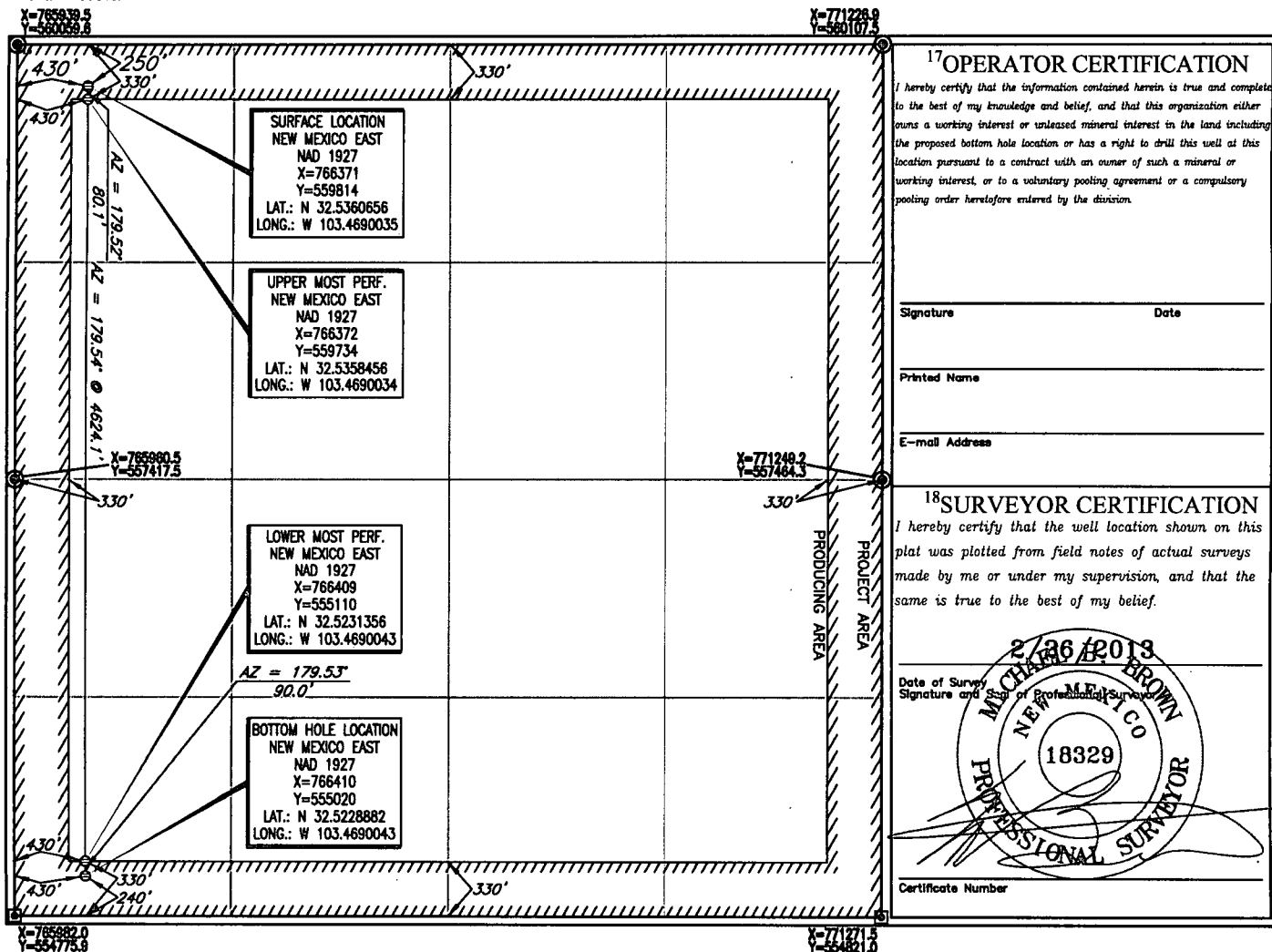
¹⁰Surface Location

UL or lot no.	Section	Township	Range	Lot Idn	Feet from the	North/South line	Feet from the	East/West line	County
D	33	20-S	35-E	-	250'	NORTH	430'	WEST	LEA

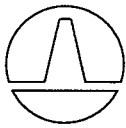
UL or lot no.	Section	Township	Range	Lot Idn	Feet from the	North/South line	Feet from the	East/West line	County
M	33	20-S	35-E	-	240'	SOUTH	430'	WEST	LEA

¹² Dedicated Acres	¹³ Joint or Infill	¹⁴ Consolidation Code	¹⁵ Order No.

No allowable will be assigned to this completion until all interests have been consolidated or a non-standard unit has been approved by the division.



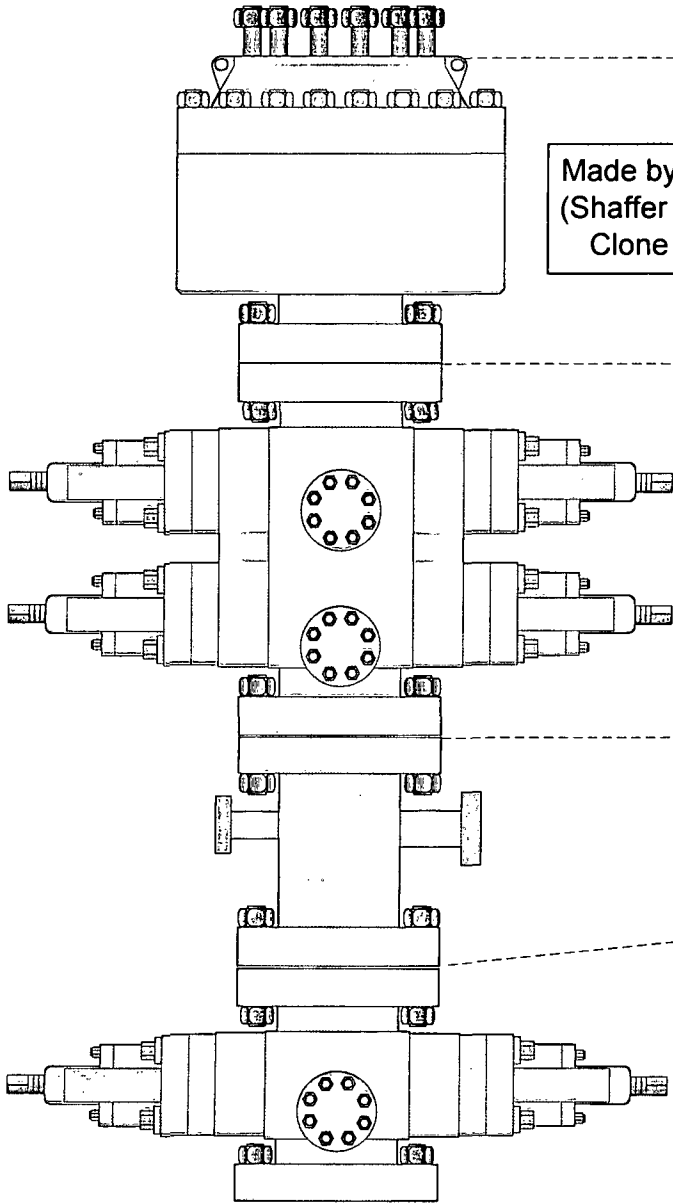
APR 15 2013



PATTERSON-UTI

Well Control

RIG: 203



Made by Cameron
(Shaffer Spherical)
Clone Annular

PATTERSON-UTI # PS2-628

STYLE: New Shaffer Spherical

BORE 13 5/8" PRESSURE 5,000

HEIGHT: 48 1/2" WEIGHT: 13,800 lbs

PATTERSON-UTI # PC2-128

STYLE: New Cameron Type U

BORE 13 5/8" PRESSURE 10,000

RAMS: TOP 5" Pipe BTM Blinds

HEIGHT: 66 5/8" WEIGHT: 24,000 lbs

Length 40" Outlets 4" 10M

DSA 4" 10M x 2" 10M

PATTERSON-UTI # PC2-228

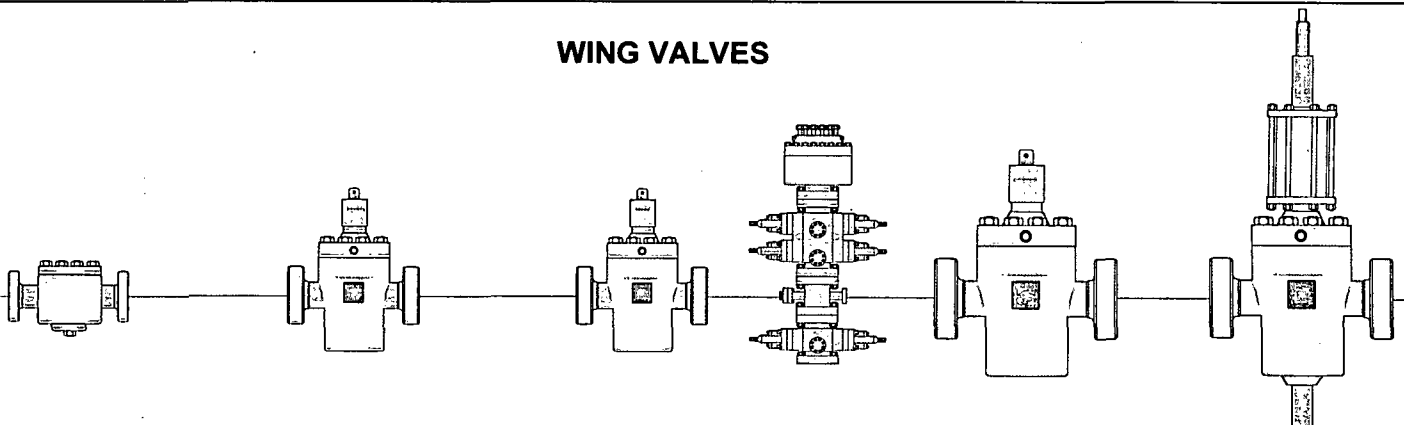
STYLE: New Cameron Type U

BORE 13 5/8" PRESSURE 10,000

RAMS: 5" Pipe

HEIGHT: 41 5/8" WEIGHT: 13,000 lbs

WING VALVES



2" Check Valve

2" Manual Valve

2" Manual Valve

4" Manual Valve

4" Hydraulic Valve