

DISTRICT I
1625 N. FRENCH DR., HOBBS, NM 88240
Phone: (575) 393-6161 Fax: (575) 393-0720

DISTRICT II
1501 W. GRAND AVENUE, ARTESIA, NM 88210
Phone: (575) 746-1283 Fax: (575) 746-9720

DISTRICT III
1000 RIO BRAZOS RD., AZTEC, NM 87410
Phone: (505) 334-6178 Fax: (505) 334-8170

DISTRICT IV
11865 S. ST. FRANCIS DR., SANTA FE, NM 87505
Phone: (505) 476-3460 Fax: (505) 476-3462

State of New Mexico
Energy, Minerals & Natural Resources Department
HOBBSD CONSERVATION DIVISION
11885 SOUTH ST. FRANCIS DR.
Santa Fe, New Mexico 87505

Form C-102
Revised August 1, 2011
Submit one copy to appropriate

SEP 19 2013

☐ AMENDED REPORT

RECEIVED LOCATION AND ACREAGE DEDICATION PLAT

API Number 30-025-41413	Pool Code 97899	Well Name Wildcat; Bone Spring
Property Code 40543	Property Name WINDWARD FEDERAL	Well Number 3H
OGRID No. 217955	Operator Name COG PRODUCTION, LLC	Elevation 3551.9

Surface Location

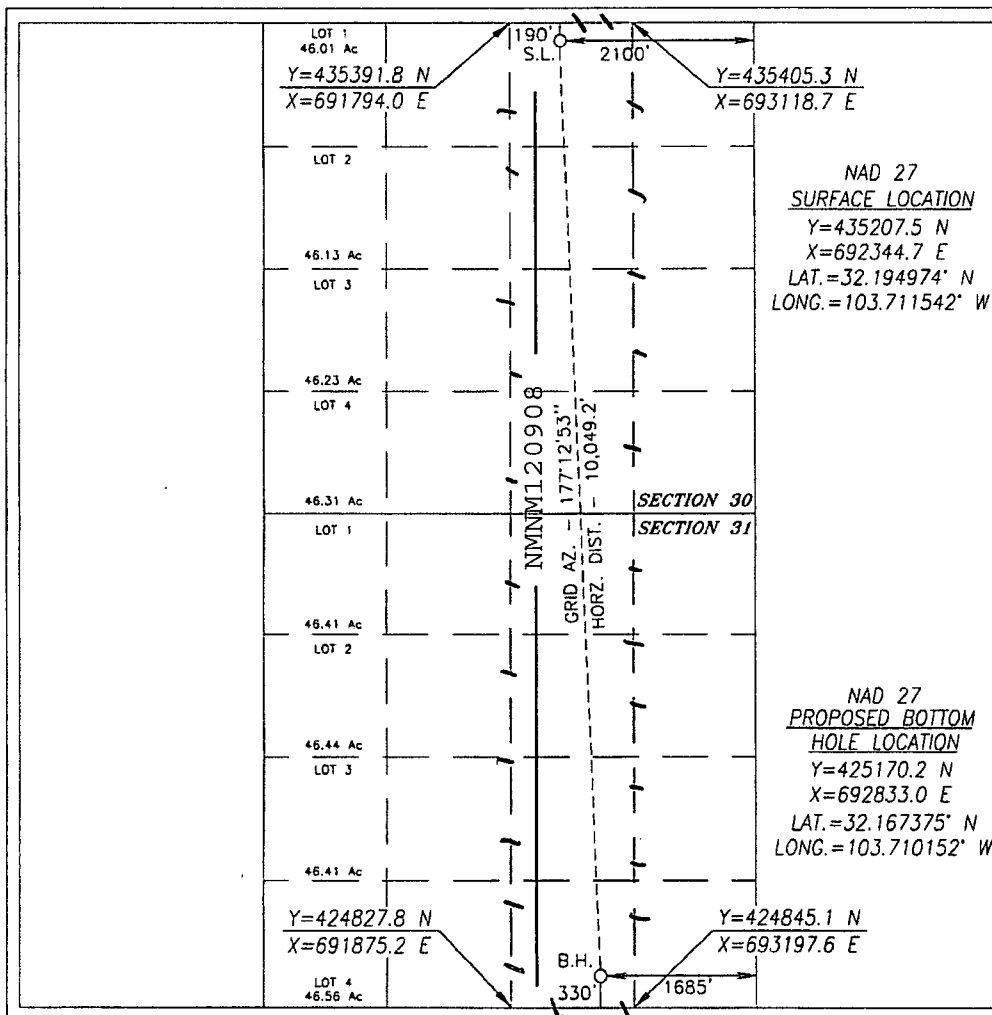
UL or lot No.	Section	Township	Range	Lot Idn	Feet from the	North/South line	Feet from the	East/West line	County
B	30	24-S	32-E		190	NORTH	2100	EAST	LEA

Bottom Hole Location If Different From Surface

UL or lot No.	Section	Township	Range	Lot Idn	Feet from the	North/South line	Feet from the	East/West line	County
O	31	24-S	32-E		330	SOUTH	1685	EAST	LEA

Dedicated Acres	Joint or Infill	Consolidation Code	Order No.
320			

NO ALLOWABLE WILL BE ASSIGNED TO THIS COMPLETION UNTIL ALL INTERESTS HAVE BEEN CONSOLIDATED
OR A NON-STANDARD UNIT HAS BEEN APPROVED BY THE DIVISION



OPERATOR CERTIFICATION

I hereby certify that the information herein is true and complete to the best of my knowledge and belief, and that this organization either owns a working interest or unleased mineral interest in the land including the proposed bottom hole location or has a right to drill this well at this location pursuant to a contract with an owner of such mineral or working interest, or to a voluntary pooling agreement or a compulsory pooling order heretofore entered by the division.

Melanie Porter 8/11/13
Signature Date

Melanie Porter
Printed Name
mporter@concho.com
E-mail Address

SURVEYOR CERTIFICATION

I hereby certify that the well location shown on this plat was plotted from field notes of actual surveys made by me or under my supervision, and that the same is true and correct to the best of my belief.

JUNE 27, 2013

Date of Survey

Signature & Seal of Professional Surveyor



Chad Harcrow 11/3/13
Certificate No. CHAD HARCROW 17777
W.O. # 13-437 DRAWN BY: VD

SEP 23 2013

dm