

**Permit Information:**

Well Name: Dragon 36 State No. 701H

**Location:**

SL: 578' FNL & 2038' FEL, Section 36, T-24-S, R-33-E, Lea Co., N.M.

BHL: 230' FSL & 1615' FEL, Section 36, T-24-S, R-33-E, Lea Co., N.M.

**Casing Program:**

Hole Size	Interval	Csg OD	Weight	Grade	Conn	DF <sub>min</sub> Collapse	DF <sub>min</sub> Burst	DF <sub>min</sub> Tension
12.25"	0 - 1,300'	9.625"	40#	J55	STC	1.125	1.25	1.60
8.75"	0-11,350'	7"	26#	HCP-110	LTC	1.125	1.25	1.60
6.125"	0'-17,332'	4.5"	13.5#	HCP-110	BTC	1.125	1.25	1.60

**Cement Program:**

Depth	No. Sacks	Wt. ppg	Yld Ft <sup>3</sup> /ft	Slurry Description
1,300'	400	13.5	1.73	Class C + 4.0% Bentonite + 0.6% CD-32 + 0.5% CaCl <sub>2</sub> + 0.25 lb/sk Cello-Flake (TOC @ Surface)
	200	14.8	1.34	Class C + 0.6% FL-62 + 0.25 lb/sk Cello-Flake + 0.2% Sodium Metasilicate
11,350' DV Tool @ 5,200'	300	10.8	3.68	Stage 1 Lead: Class C + 15.00 lbs/sk BA-90 + 4.00% MPA-5 + 3.00% SMS + 5.00% A-10 + 1.00% BA-10A + 0.80% ASA-301 + 2.90% R-21 + 8.00 lb/sk LCM-1 + 0.005 lb/sx Static Free
	200	14.2	1.32	Stage 1 Tail: Class H + 0.65% FL-52 + 0.6% CD-32 + 1.0% EC-1 + 0.65% SMS + 2.0% Salt + 0.2% R-21 + 0.005 gps FP-6L + 0.005 pps Static Free
	400	12.7	2.22	Stage 2 Lead: Class 'C' + 2.0% SMS + 10.0% Slat + 0.55% R-21 + 0.25 pps Celloflake + 0.005 pps Static Free (TOC @ Surface)
	200	14.8	1.35	Stage 2 Tail: Class 'C' + 0.60% FL-62 + 0.7% CD-32 + 0.3% SMS + 2.0% Salt + 0.10% R-3 + 0.005 pps Static Free + 0.005 gps FP-6L
17,332'	575	11.9	2.36	50:50:6 Class H + 0.20% FL-52 + 0.75% CD-32 + 1.0% EC-1 + 0.15% ASA-301 + 1.60% SMS + 5.0% Salt + 0.50% R-21 + 5.0 pps LCM-1 (TOC @ 10,850')
	450	14.2	1.35	50:50:2 Class H + 0.65% FL-52 + 0.70% CD-32 + 1.0% EC-1 + 0.40% SMS + 2.0% Salt + 0.05% R-3 + 0.005 pps Static Free + 0.005 gps FP-6L

**Mud Program:**

Depth	Type	Weight (ppg)	Viscosity	Water Loss
0 - 1,300'	Fresh - Gel	8.6-8.8	28-34	N/c
1,300' - 11,350'	Oil Base	8.7-9.4	58-68	N/c - 6
11,350' - 12,015'	Oil Base	8.7-9.4	58-68	N/c - 6
12,015' - 17,332' Lateral	Oil Base	9.0-9.5	58-68	N/c - 6

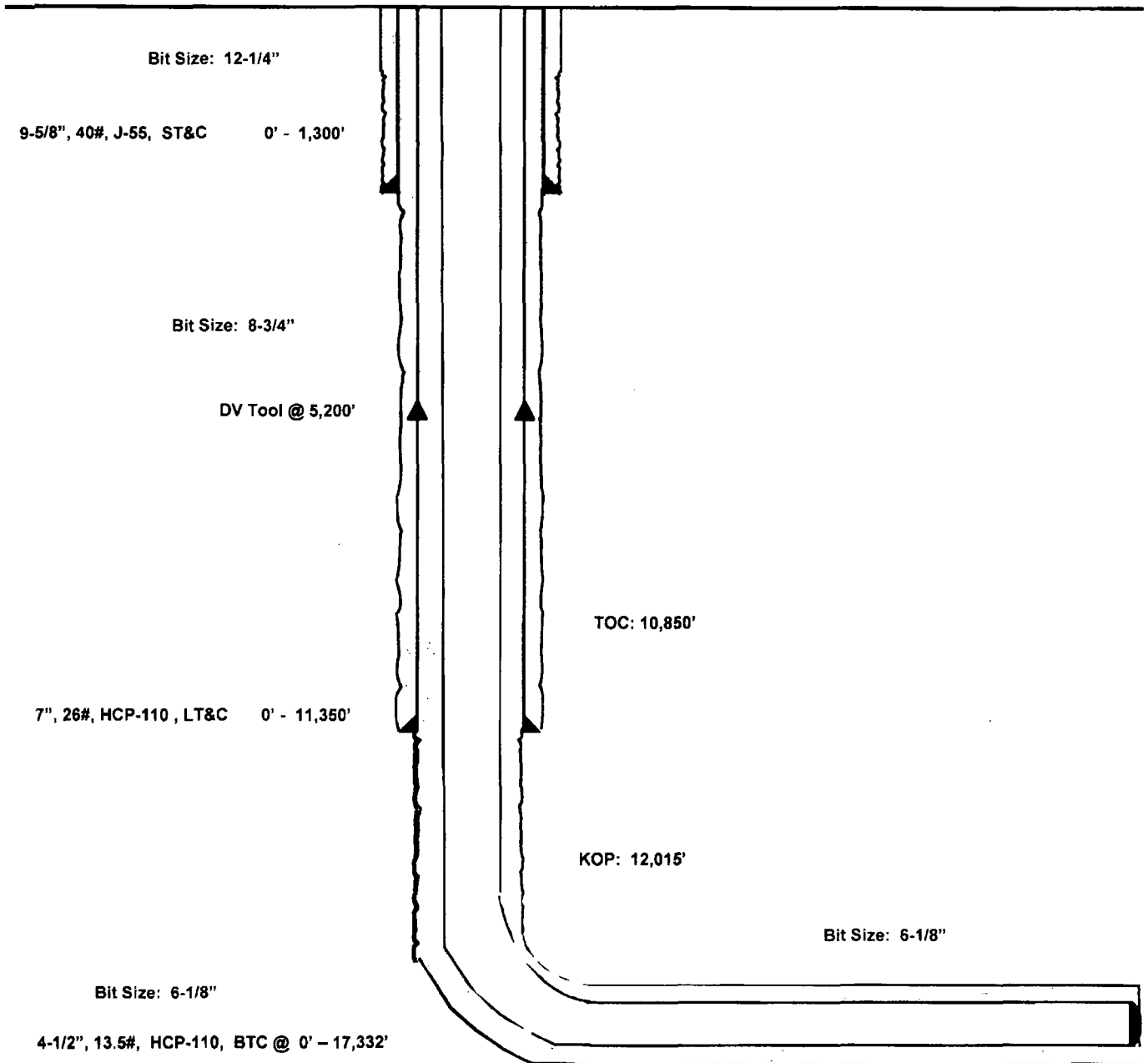
**Dragon 36 State #701H**

**Lea County, New Mexico  
Proposed Wellbore**

**578' FNL  
2038' FEL  
Section 36  
T-24-S, R-33-E**

**API: 30-025-\*\*\*\*\***

**KB: 3,532'  
GL: 3,507'**



**Lateral: 17,332' MD, 12,500' TVD**  
**BH Location: 230' FSL & 1615' FEL**  
**Section 36**  
**T-24-S, R-33-E**



Lea County, NM (NAD 27 NME)

#701H

Nomac 55

Plan #1

PROJECT DETAILS: Lea County, NM (NAD 27 NME)

Geodetic System: US State Plane 1927 (Exact solution)  
Datum: NAD 1927 (NADCON CONUS)  
Ellipsoid: Clarke 1866  
Zone: New Mexico East 3001  
System Datum: Mean Sea Level



Azimuths to Grid North:  
True North: 4.43°  
Magnetic North: 6.69°  
Magnetic Field  
Strength: 48236.5anT  
Dip Angle: 60.06°  
Date: 1/11/2018  
Model: IGRF2016

To convert a Magnetic Direction to a Grid Direction, Add 6.69°  
To convert a Magnetic Direction to a True Direction, Add 7.17° East  
To convert a True Direction to a Grid Direction, Subtract 0.42°

WELL DETAILS: #701H

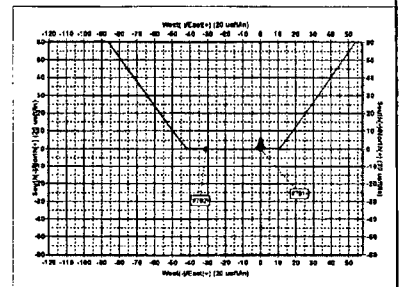
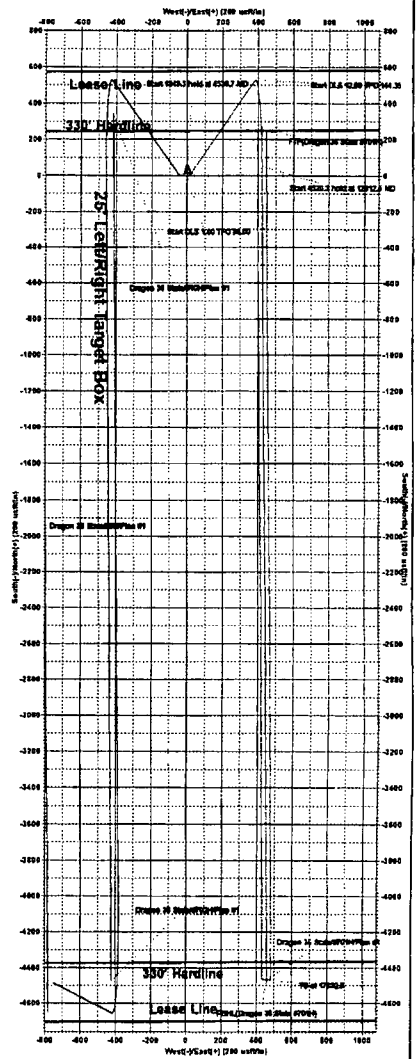
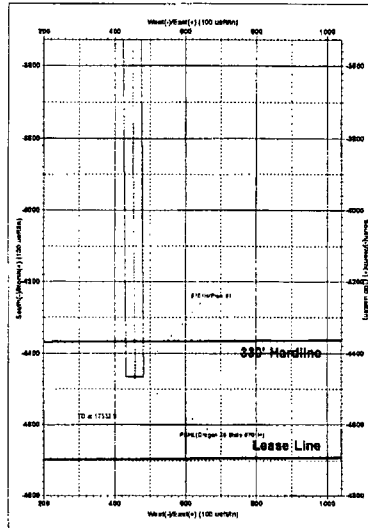
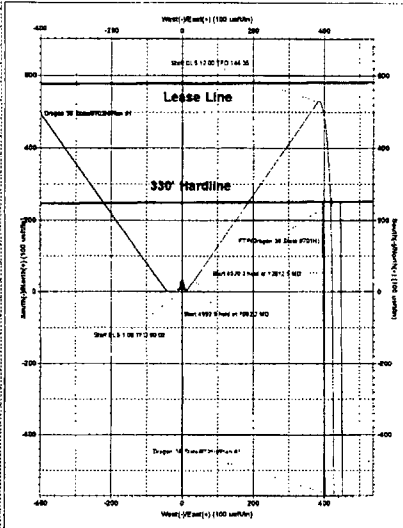
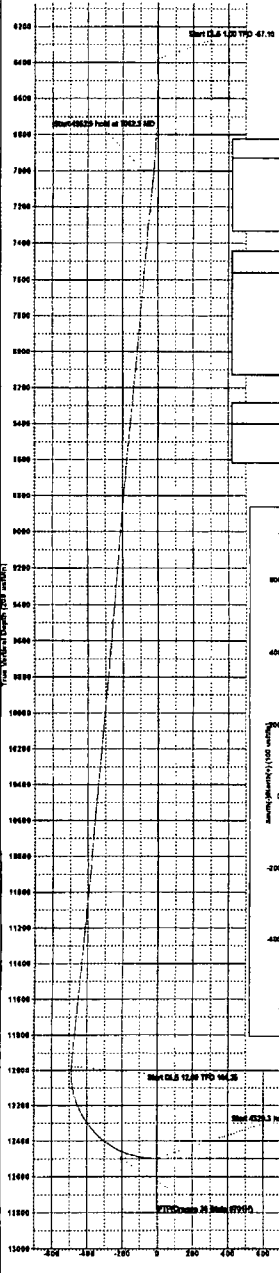
Ground Level: 3537.0  
KB - 21 @ 3538 Offset (Nomac 55)  
+N: 8    +E: W    Northing    Easting    Lapse    Longitude    Slot  
0.0    0.0    43000.00    15651.0032    10.48    563 N    103° 31' 25.00 W

SECTION DETAILS

Sec	MD	Inc	Azi	TVD	+N-S	+E-W	Dleg	TFace	VSecl	Target	Annotation
1	0.0	0.00	0.00	0.0	0.0	0.0	0.00	0.00	0.0		
2	4600.0	0.00	0.00	4600.0	0.0	0.0	0.00	0.00	0.0		
3	4836.7	0.31	90.00	4830.7	0.0	9.1	1.00	90.00	0.0		
4	6385.0	0.31	90.00	6380.0	0.0	19.0	0.00	0.00	1.0		
5	7062.2	6.99	38.01	7060.4	34.1	38.7	1.00	-57.19	-26.2		
6	12016.1	6.99	38.01	11976.8	818.0	381.6	0.00	0.00	-486.4		
7	12815.5	90.00	179.66	12803.9	80.2	422.8	12.00	144.35	-8.8		
8	17332.8	90.00	179.66	12508.8	-4487.0	467.0	0.00	0.00	4480.3		PBHL(Dragon 36 State #701H)

WELLBORE TARGET DETAILS (MAP CO-ORDINATES)

Name	TVD	+N-S	+E-W	Northing	Easting	Shape
FTP(Dragon 36 State #701H)	12800.0	250.0	421.0	430262.00	750842.00	Point
PBHL(Dragon 36 State #701H)	12500.0	-4487.0	467.0	425635.00	750978.00	Rectangle (Side: LD 0 W60 0)



Vertical Section at 174.16° (206 usf/m)