

Submit 1 Copy To Appropriate District Office
District I – (575) 393-6161
1625 N. French Dr., Hobbs, NM 88240
District II – (575) 748-1283
811 S. First St., Artesia, NM 88210
District III – (505) 334-6178
1000 Rio Brazos Rd., Aztec, NM 87410
District IV – (505) 476-3460
1220 S. St. Francis Dr., Santa Fe, NM 87505

State of New Mexico
Energy, Minerals and Natural Resources

Form C-103
Revised July 18, 2013

OIL CONSERVATION DIVISION
1220 South St. Francis Dr.
Santa Fe, NM 87505

SUNDRY NOTICES AND REPORTS ON WELLS (DO NOT USE THIS FORM FOR PROPOSALS TO DRILL OR TO DEEPEN OR PLUG BACK TO A DIFFERENT RESERVOIR. USE "APPLICATION FOR PERMIT" (FORM C-101) FOR SUCH PROPOSALS.)		WELL API NO. 30-025-25046
1. Type of Well: Oil Well <input type="checkbox"/> Gas Well <input type="checkbox"/> Other <u>SWD</u>		5. Indicate Type of Lease STATE <input type="checkbox"/> FEE <input checked="" type="checkbox"/> X
2. Name of Operator BC & D Operating, Inc.		6. State Oil & Gas Lease No.
3. Address of Operator P.O. Box 302, Hobbs, New Mexico 88241		7. Lease Name or Unit Agreement Name West Jal "B" Deep
4. Well Location Unit Letter <u>H</u> : 1980 feet from the <u>North</u> line and 660 feet from the <u>East</u> line Section <u>17</u> Township <u>25S</u> Range <u>36E</u> NMPM Lea County		8. Well Number <u>1</u>
11. Elevation (Show whether DR, RKB, RT, GR, etc.) 3150' RKB		9. OGRID Number 025670
		10. Pool name or Wildcat <u>Strawn/Atoka SWD Miss/Dev/Fuss</u>

12. Check Appropriate Box to Indicate Nature of Notice, Report or Other Data

NOTICE OF INTENTION TO:		SUBSEQUENT REPORT OF:	
PERFORM REMEDIAL WORK <input type="checkbox"/>	PLUG AND ABANDON <input type="checkbox"/>	REMEDIAL WORK <input checked="" type="checkbox"/> X	ALTERING CASING <input type="checkbox"/>
TEMPORARILY ABANDON <input type="checkbox"/>	CHANGE PLANS <input type="checkbox"/>	COMMENCE DRILLING OPNS. <input type="checkbox"/>	P AND A <input type="checkbox"/>
PULL OR ALTER CASING <input type="checkbox"/>	MULTIPLE COMPL <input type="checkbox"/>	CASING/CEMENT JOB <input type="checkbox"/>	
DOWNHOLE COMMINGLE <input type="checkbox"/>			
CLOSED-LOOP SYSTEM <input type="checkbox"/>			
OTHER: <input type="checkbox"/>		OTHER: <input type="checkbox"/>	

13. Describe proposed or completed operations. (Clearly state all pertinent details, and give pertinent dates, including estimated date of starting any proposed work). SEE RULE 19.15.7.14 NMAC. For Multiple Completions: Attach wellbore diagram of proposed completion or recompletion.

Please See Attached Report.

Spud Date:

Rig Release Date:

I hereby certify that the information above is true and complete to the best of my knowledge and belief.

SIGNATURE Donnie Hill TITLE President DATE 1/15/2015

Type or print name Donnie Hill E-mail address: dhill@wellconsultant.com PHONE: 575-942-2700

For State Use Only

APPROVED BY: [Signature] TITLE Petroleum Engineer DATE 01/30/15

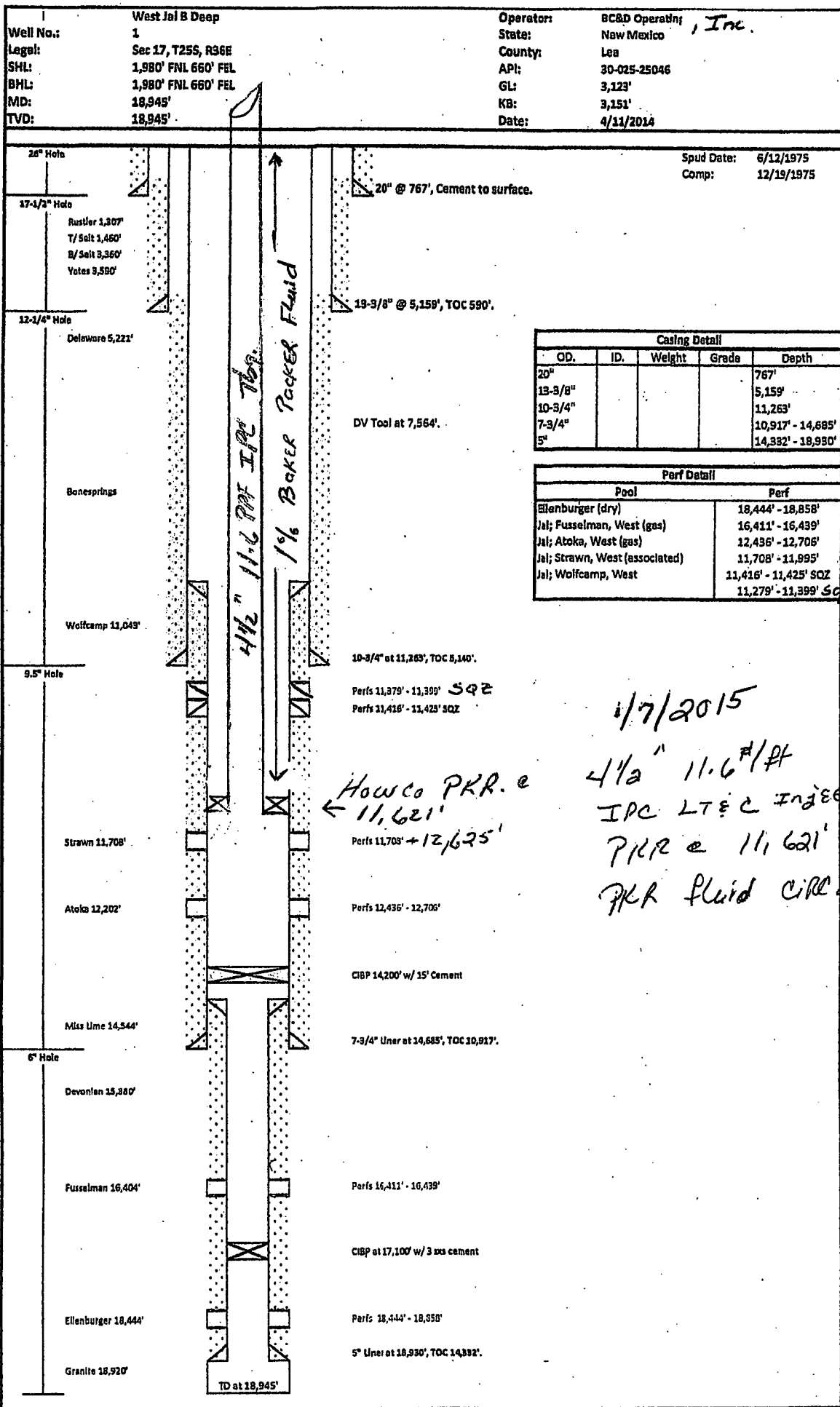
Conditions of Approval (if any):

Zone Permanently Plugged (ZPP)

Jal Wolfcamp West

FEB 03 2015

E-PERMITTING
P&A NR P&A RBSms DAS
INT to P&A RBSms DAS
CSNG CHG Loc
TA Well type dev



BC&D Operating, Inc.

West Jal Deep B # 1

API # 30-025-25046

7/21/2014

SICP = -0- Psig. MIRU Mico Completion rig. Hold PJSM. Dig out cellar. Replace 2" nipples and valves on 10-3/4" csg. Attempt to unseat pump. Work pump @ 10 pts over weight. Pump unseated. Pooh and lay dn 134 - 7/8" rods & 316 - 3/4" rods. All rods appear to be in good condition. Secure well. SDFN

7/22/1024

SICP = -0- Psig. Crew to location. Hold PJSM. Brief crew on today's task at hand. ND well head. Observe threads on B-1 Tbg hanger to be trashed. Order Center Spear. Spear tbg. and lift off B-1 Flange. NU and test BOPE. Rls TAC. Tih w/ 30' of tbg to confirm TAC to be Rlsd Ok. Pooh and lay dn 200 jts 2-3/8" P-110 8rd EUE tbg. (6530'). Secure well. SDFN

7/23/2014

SICP = -0- Psig. Crew to location. Hold PJSM. Brief crew on today's task at hand. Cont. Pooh and lay dn 145 jts 2-3/8" tbg, TAC, 3 jts. 2-3/8" tbg, 4' perf sub., 2-3/8" mud jt. Moved pipe to side of location. Reset pipe racks. Off load and rack 14,400' 2-7/8" PH-6, L-80 tbg. Pu and Tih w/ 5-1/2" shoe, 2 jts 4-1/2" wash pipe, T-Dog overshot, 2 jts 4-1/2" wash pipe, hydraulic jars, 6 - 4 3/4" drill collars, (BHA = 363.09') and 57 jts 2-7/8" PH-6 L-80 work string. Secure well. SDFN

7/24/2014

SICP = -0- Psig. Crew to location. Hold PJSM. Brief crew on today's task at hand. Cont. Tih w/ 2-7/8" work string to 10,878'. Secure well. SDFN

7/25/2014

SICP = -0- Psig. Crew to location. Hold PJSM. Brief crew on today's task at hand. Cont. Tih w/ 2-7/8" work string frm 10,878' to tag fish @ 11,500'. Rotate over top of fish and Tih to tag pkr @ 11,650'. Pick up and check to determine if T-Dog overshot had engaged. Ok. Set jars off to free fish. Drag fish up hole to top of 7-3/4" liner. Fish stuck. Set jars off. Fish

freed up. Pooh w/ 368 jts 2-7/8" tbg. Stand back collars. Lay dn wash pipe. Observe fish to have been lost as we were coming out of hole. Secure well. Shut dn until Monday.

7/26/2014

Si. Saturday. No activity.

7/27/2014

Si. Sunday. No activity.

7/28/2014

SICP = 0#. Crew to location. Hold PJSM. Pu and Tih w/ 5-3/4" overshot dressed to catch 2-3/8" cplg (3-1/16" grapple) or 2-3/8" upset (2-19/32" grapple), 4-3/4" bumper sub, 2-7/8" bent sub, jars, 6 - 4-3/4" drill collars, & 2-7/8" PH-6 tbg. Work thru liner top @ 10,917'. Cont. Tih to tag fish @ 11,530'. Rotate over fish, pick up on tbg to observe increase in tbg weight. Pull off fish. Worked overshot over fish several times, but could not get tools to engage fish. Determine fish to be too small for 3-1/16" grapple and too large for 2-19/32" grapple. Pooh w/ 192 jts 2-7/8" tbg. Secure well. SDFN

7/29/2014

SICP = 0#. Crew to location. Hold PJSM. Cont. Pooh w/ 2-7/8" work string, lay dn BHA. Disassembly fishing tools. Inspect and observe marking inside grapple and top bushing indicative of a damaged 2-3/8" upset. Pu and Tih w/ 5-7/8" guide shoe, 4-5/8" bowl w/ 2-19/32" grapple, bushing, 4-5/8" bowl w/ 2-3/8" grapple, bumper sub, jars, 6 - 4-3/4" drill collars, 370 jts 2-7/8" PH-6 L-80 tbg. Tag fish @ 11,530', roll off top of fish, engage fish, work fish up and the hole for 60' to confirm tools had sufficient bite. Pooh w/ tbg. Observe fish to drag from 11,530' to top of liner @ 10,917'. Fish became stuck at 10,927', Pull 25 pts over string weight, fish freed up, but continued to drag through top of liner @ 10,917' at which point drag no longer occurred. Pooh w/ a total of 96 jts 2-7/8" tbg. Secure well. SDFN

7/30/2014

SICP = 0#. Crew to location. Hold PJSM. Cont. Pooh w/ 274 jts 2-7/8" work string, 6 drill collars, jars, bumper sub, and fishing assembly. Lay down 3 jts of 2-3/8" tbg and Arrowset 1X packer (fish is now recovered). Close BOP. Pump 200 bbls water dn 10-3/4" csg to flush any debri out of well bore prior to Tih w/ retainer. Secure well. SDFN

7/31/2014

SICP = 0#. Crew to location. Hold PJSM. Pu and Tih w/ 7-3/4" cement retainer & 2-7/8" work string. Rotate off liner top @ 10,917'. Cont. Tih to 11,283'. Set retainer @ 11,283'. Wait on Warrior for 4 hours. MIRU Warrior cement wagons. Hold PJSM. Est rate and psig into perfs @ 11,379' - 11,399'. Pumped tbg/csg capacity @ 6 BPM x Vac. Mix and pump 100 sxs. Class H + .2% R-20 + .4% FL-12 + .2% CD-37. Displace to 11,283' minus 5 bbls. Tbg on vacuum. Si thirty minutes. Attempt to catch slurry, could not. Over displace cement. Order additional cement. Wait 4 hours for cement to arrive. After reviewing load sheets and checking the tiers it was determined that Warrior had delivered wrong cement. Sent bulk Trk to Hobbs to get correct cement. Waited 4 hours for cement to arrive. Hold PJSM. Establish rate/psig into perfs @ 6 bpm x vacuum. Mix and pump 100 sxs Class H cement + 1% CaCl₂ + 1.5#/sk cell flakes + 100 sxs Class H + .2% R-20 + .4% FL-20 + .2% CD-37. Displace w/ 23 bbls water, Si prepare to hesitate squeeze. Si thirty minutes. Start displacement. Perfs begin to squeeze. Si 15 minutes. Cont w/ displacement. 26 sxs of lead cement into perfs establish 3000 Psig squeeze. Si observe pressure to decrease to 2950#. Pressure back to 3000#. Held ok. Pull out of retainer @ 11,283'. Pull up to within 60' of top of liner @ 10,917'. Mix and pump 60 bbls sugar water @ 6 Bpm to dilute cement above liner top. RD & MO Warrior cement wagons. Pooh w/ 64 jts 2-7/8" work string. Secure well. SD @ 6:00 am. WOC until Saturday 8/2/2014.

8/1/2014

Si. WOC

8/2/2014

SICP = 0#. Crew to location. Hold PJSM. Cont. POOH w/ 2-7/8" work string and drill collars. Lay dn Halliburton setting tool. Pu and Tih w/ 6-1/2" bit, bit sub, 6- 4-3/4" drill collars and 2-7/8" Ph-6 work string. Tag cement @ 9,881'. (KB) Pu power swivel, NU rotating head. Break circ. Drill 60' determine the cement was hard and continuous vs stringers. Lay dn power swivel. Pooh w/ 28 jts 2-7/8" work string. Secure well. SDFN

8/3/2014

SICP = 0#. Crew to location. Hold PJSM. Pooh w/ 2-7/8" work string, drill collars and bit. Dig out cellar. Attempt to ND 11" 5k flange in order to get 9-1/2" bit through well head. Bolts would not break. Secure well. SDFN

8/4/2014

SICP = 0#. Crew to location. Hold PJSM. Welder to cut nuts off bolts on 11" 5k x 7-1/16" 5k adaptor flange. Pick up on flange. Could not separate the flanges @ 15k over weight w/ the rig. Order out chisels/pry bars. Separate flanges ~1/2". Will cut studs between the two flanges and remove top flange. Secure well. SDFN

8/5/2014

SICP = 0#. Crew to location. Hold PJSM. Welder to cut studs between 11" 5k x 7-1/16" 5k adaptor flange. Pick up on flange. Separate the flanges. Lay dn BOP. Remove studs from flng. Replace studs. Drive studs out of bottom flange. Make up 9" bit, bit sub and drill collars, Nu up BOP. Tih w/ 6-4-3/4" drill collars and 240 jts 2-7/8" PH-6 workstring. Secure well. SDFN.

8/6/2014

SICP = 0#. Crew to location. Hold PJSM. Cont. Tih w/ 2-7/8" work string. Tag cement @ 9900'. Pu power swivel. NU rotating head. Break circ. Drill cement down to 10,186'. Fall out of cement. Circ hole clean. Tih w/ 2-7/8" tbg to tag liner top @ 10,917'. Pooh w/ 208 jts 2-7/8" tbg. Secure well. SDFN

8/7/2014

SICP = 0#. Crew to location. Hold PJSM. Cont. Pooh w/ 2-7/8" work string. ND BOP. Disassemble 9" BHA. NU BOPE. PU and Tih w/ 6-1/2" bit, bit sub, drill collars & 2-7/8" work string. Roll off liner top @ 10,917'. Cont. Tih to tag cement @ 11,059'. Pu power swivel. Break circ. Drill out cement dn to 11,120'. Pooh w/ tbg to clear liner top @ 10,917'. Secure well. SDFN

8/8/2014

SICP = 0#. Crew to location. Hold PJSM. Tih w/ 2-7/8" work string frm 10,869' to tag cement @ 11,058'. Pu power swivel. Break circ. Drill out cement done to 11,200'. Test csg to 750 Psig. Held ok. Cont. drilling out cement dn to retainer @ 11,276'. Drill out retainer and cement down to 11,280'. Bit appears to be worn out. Circ hole clean. Pooh w/ 102 jts 2-7/8" work string. Secure well. SDFN

8/9/2014

SICP = 0#. Crew to location. Hold PJSM. Pooh w/ 2-7/8" work string frm 7,980'. C/O damaged bit. Pu and Tih w/ 6-1/2" bit, (Bit # 2), drill collars, & 11,278' 2-7/8" Ph-6 tbg. Pu power swivel, break circ. Drill out balance of retainer and cement down to 11,313'. Pooh w/ 2-7/8" tbg to 10,860'. Secure well. SDFN

8/10/2014

SICP = 0#. Crew to location. Hold PJSM. Tih w/ 2-7/8" work string frm 10,860' to 11,313'. Pu power swivel, break circ. Drill out cement frm 11,313' to 11,380' and drilled out of cmt. Test casing @ 950 Psig. Casing would not test. Pooh w/ work string to 10,830'. Secure well SDFN

8/11/2014

SICP = 0#. Crew to location. Hold PJSM. Tih w/ 2-7/8" work string frm 10,860' to 11,502' Miru Warrior. Hold PJSM. Begin to establish rate and pressure dn 2-7/8" tbg to spot balanced cement plug across Wolf Camp perf. Tbg pressure increase to 3000 Psig and locked up. Rd Warrior. Pressure up on casing with reverse pump to 1500 Psig. Held ok for 15 minutes. Rls pressure and Pooh w/ 4 jts 2-7/8" tbg. Pressure casing to 1500 Psig. Pressure tbg to 1000 Psig. Surge tubing to reverse pit in attempt to remove plug in tbg. Repeat surge procedure several times. Observe Tbg and csg pressure to equalize indicating plug had been moved up hole. Circ in reverse to clear plug. Test casing @ 1500 Psig for 15 minutes. Held ok. Rd & Rls Warrior. Tih 2-7/8" tbg. Tag @ 11,555'. Pu power swivel. Break circ and begin drilling cement. Drill down to 11,559' with cement and iron cutting in returns. Progress very slow. Decision made to Tooh and pick up shoe to pick up and remove what we believe to be a 2-3/8" collar left in the hole from previous fish. Pooh w/ 176 jts 2-7/8" tbg. Secure well. SDFN.

8/12/2014

SICP = 0#. Crew to location. Hold PJSM. Resume Pooh w/ work string & BHA. Lay dn 6-1/2" bit. Pu and Tih w/ 6" shoe with smooth OD, cut-rite ID, 3 jts 4-3/4" wash pipe, drill collars, and 2-7/8" work string. Wash over debris @ 11,559', continue washing dn to 11,620', begin cutting on CIBP. Drill out CIBP. Well went on vacuum and then had slight kick. Followed CIBP dn 11,650'. Secured well. SDFN

8/13/2014

SICP = Vac. Crew to location. Hold PJSM. Tih w/ 2-7/8" work string from 11,650' to 12,770' below Atoka perms to confirm casing to be clear of debris. Circ. Hole clean. Start Pooh & Ld 2-7/8" work string to 7470'. Rig developed engine problems & would not start. Secure well. SDFN

8/14/2014

SICP = Vac. Crew to location. Hold PJSM. Wait on mechanic to repair rig. Resume Pooh & Ld 2-7/8" work string & BHA. Recover one jt 2-3/8" tbg. All 2-3/8" tbg now recovered. Secure well. SDFN

8/15/2014

SICP = Vac. Crew to location. Hold PJSM. Rig down and Move off completion rig. Release all contractors. Secure well. Shut well in pending further activity.

8/18/2014

Miru Capitan Wireline Unit and Mast truck. Hold PJSM. Pu and Tih w/ GR/CCL/RBL/CNL tools. Tag Pbtd @ 14,155'. Pull 200' repeat section. Get on depth w/ CNL log dated 12/20/1975. Pull GR/CCL/RBL/CNL log from PBTD @ 14,155' to 10,910' w/ good cement bond across complete section. Rd and Rls Capitan Wire line. Secure well. Well si pending further activity. Reports suspended until further activity.

9/9/2014 thru 9/20/2014

Miru Merryman Construction dirt equipment. Confirm pad layout with contractor. Dozer to begin leveling pad, haul caliche and compact, Finish tank battery facility pad. Rd and Rls Merry Man Construction.

12/19/2014

Crew to location. Hold PJSM. Finish building tank battery pad. Install secondary containment and line with 40 mil liner. Set 1000 bbl gun barrel and 2-500 bbl stk tanks. Start building tank battery facility.

Miru Mico Rig # 12, Nd well head, Nu Bop, Set pipe racks, off load and rack 480 jts 2-7/8" Ph-6 P110 tbg. Secure well. Sdfn

12/20/2014

Crew to location. Hold PJSM. Pu and Tih w/ 5-3/4" shoe, 1 jt 5-3/4" wash pipe, 6 4-3/4" DC
300 jts 2-7/8" PH-6 work string, Secure well, Sdfn

12/21/2014

Crew to location. Hold PJSM. Pu and Resume Tih w/ 2-7/8" Ph-6 tbg frm 9300' to tag remains of
CIBP from 11,650'
at 14,155', Pu power swivel, Nu stripper head, break circulation and begin drilling out CIBP.
With bttms up recovered ~50 bbls dirty water w/ iron sulfide. Clean well up. Continue
drilling. Made ~3' of hole. Circ hole clean. Secure well. SDFN.

12/22/2014

Crew to location. Hold PJSM. Drill until 11:00 am, no progress, Start Pooh w/ 2-7/8" tbg
Pooh w/ 125 stands 2-7/8" work string, Secure well, SDFN

12/23/2014

Crew to location. Hold PJSM. Finish Pooh w/ 2-7/8" work string, lay down BHA, recover
plug remains, one 2-3/8" collar and several pieces of metal and rubber. Pu and Tih w/ 6-1/2"
bit, (6) 4-3/4" drill collars, secure well, Shut down due to high winds.

12/24/2014

Crew to location. Hold PJSM. Finish Tih w/ 2-7/8" work string, Nu stripper head, Pu power
swivel, secure well, shut down for Christmas.

12/25/2014

Sd for Christmas

12/26/2014

Crew to location. Hold PJSM. Attempt to Break circ @ 14,155', well would not circulate, Secure well,
Sdfn

12/27/2014

Crew to location. Hold PJSM. Attempt to break circ @ 14,155', well would not circ., Secure well, Sdfn

12/28/2014

No activity

12/29/2014

Crew to loc., Conduct PJSM. MIRU Lobo Trucking, break circ and spot 5000 gals 15% acid across Strawn. Observe tbg and csg to go on vacuum. Rig dn and Rls Lobo. Pooh w/ 2-7/8" work string, Lay dn BHA. Secure well. Sdfn

12/30/2014

Crew to loc., Conduct PJSM. MIRU Capitan Wireline, Pu and Tih w/ 3-3/8" csg guns get on depth with original open hole log, perf additional Strawn, perfs 2 shots per ft @ 11708'-11712', 11760'-11765', 11870'-11875', 11960'-11965', 12020'-12025', 12080'-12085', 12220'-12225', 12330'-12335', 12380'-12385', & 12620'-12625', (100 holes) observe well to go on vacuum after each shot, Rd and Rls Capitan, Secure well, Sd due to icy conditions.

12/30/2014 thru 1/4/2015

Si due to holiday and icy conditions. Ice in derrick causing unsafe work environment.

1/5/2015

Crew to loc., Conduct PJSM, Tih w/ 7000' 2-7/8" work string, Pooh and lay down same, Tih w/ 7000' 2-7/8" work string, Secure well, Sdfn

1/6/2015

Crew to loc., Conduct PJSM, Pooh and lay dn 7000' 2-7/8" work string, Change out Bop rams to 4-1/2", Load out 2-7/8" work string, move 4-1/2" injection string over to pipe racks. Clean and inspect casing, secure well, Sdfn

1/7/2015

Crew to loc., Conduct PJSM, Miru Bull Rogers casing crew & Big Bear lay dn machine, Conduct PJSM. PU and Tih w/ Howco 7-3/4" RTTS w/ pump out plug, profile nipple, and 289 jts 4-1/2" 11.6 ppf P110 LT&C w/ internal plastic coating. Rd and Rls Bull Rogers and Big Bear. Set pkr @ 11,621', get off on/off tool, close Bop, pump 120 bbls cut brine dn tbg/csg annulus, pump 936 bbls Baker packer fluid. Secure well. SDFN

1/8/2015

Crew to loc., Conduct PJSM, sting onto pkr. and set 20 pts compression on pkr., Nd Bop, Nu well head, conduct preliminary

MIT. Tested good @ 750 psig. Rd and Rls Mico Rig # 12. Rls all contractors. Well is now completed.

1/9/2015 Notified NMOCD Hobbs Office that we were ready to conduct MIT. Scheduled MIT for Tuesday (1/13/2015) @ 10:00 am mst.

Clean location.

1/10/2015

Miru Lobo Trucking, Pump 5000 gals 15% NeFe acid, displace w/ cut brine, well on vacuum, Rd and Rls Lobo and all contractors. Waiting on MIT

1/13/2015

Miru Cuatro Trucking, Nu pressure recorder, NMOCD called and said they could not witness MIT due to road conditions and said to go ahead and test. Cuatro to pressure tbg/csg annulus to 540 Psig and monitor for 35 minutes with no leak off. Good positive test. Braden head had nothing on it. 4-1/2" Injection tbg = vacuum.

Release pressure on annulus. Rd and Rls Cuatro. Job complete.

Final report.