

District I  
1625 N. French Dr., Hobbs, NM 88240  
Phone: (575) 393-6161 Fax: (575) 393-0720  
District II  
811 S. First St., Artesia, NM 88210  
Phone: (575) 748-1283 Fax: (575) 748-9720  
District III  
1000 Rio Brazos Road, Aztec, NM 87410  
Phone: (505) 334-6178 Fax: (505) 334-6170  
District IV  
1220 S. St. Francis Dr., Santa Fe, NM 87505  
Phone: (505) 476-3460 Fax: (505) 476-3462

State of New Mexico  
Energy, Minerals & Natural Resources  
Department  
OIL CONSERVATION DIVISION  
1220 South St. Francis Dr.  
Santa Fe, NM 87505

FORM C-102  
Revised August 1, 2011  
Submit one copy to appropriate  
District Office

☐ AMENDED REPORT

WELL LOCATION AND ACREAGE DEDICATION PLAT

|  |  |  |
|--|--|--|
| <sup>1</sup> API Number<br><b>30-025-42499</b> | <sup>2</sup> Pool Code<br><b>45793</b>                                 | <sup>3</sup> Pool Name<br><b>MESCALERO ESCARPE, BS</b> |
| <sup>4</sup> Property Code<br><b>314391</b>    | <sup>5</sup> Property Name<br><b>PICKARD STATE 20-18S-34E RN STATE</b> | <sup>6</sup> Well Number<br><b>#124H</b>               |
| <sup>7</sup> OGRID No.<br><b>228937</b>        | <sup>8</sup> Operator Name<br><b>MATADOR PRODUCTION COMPANY</b>        | <sup>9</sup> Elevation<br><b>4045'</b>                 |

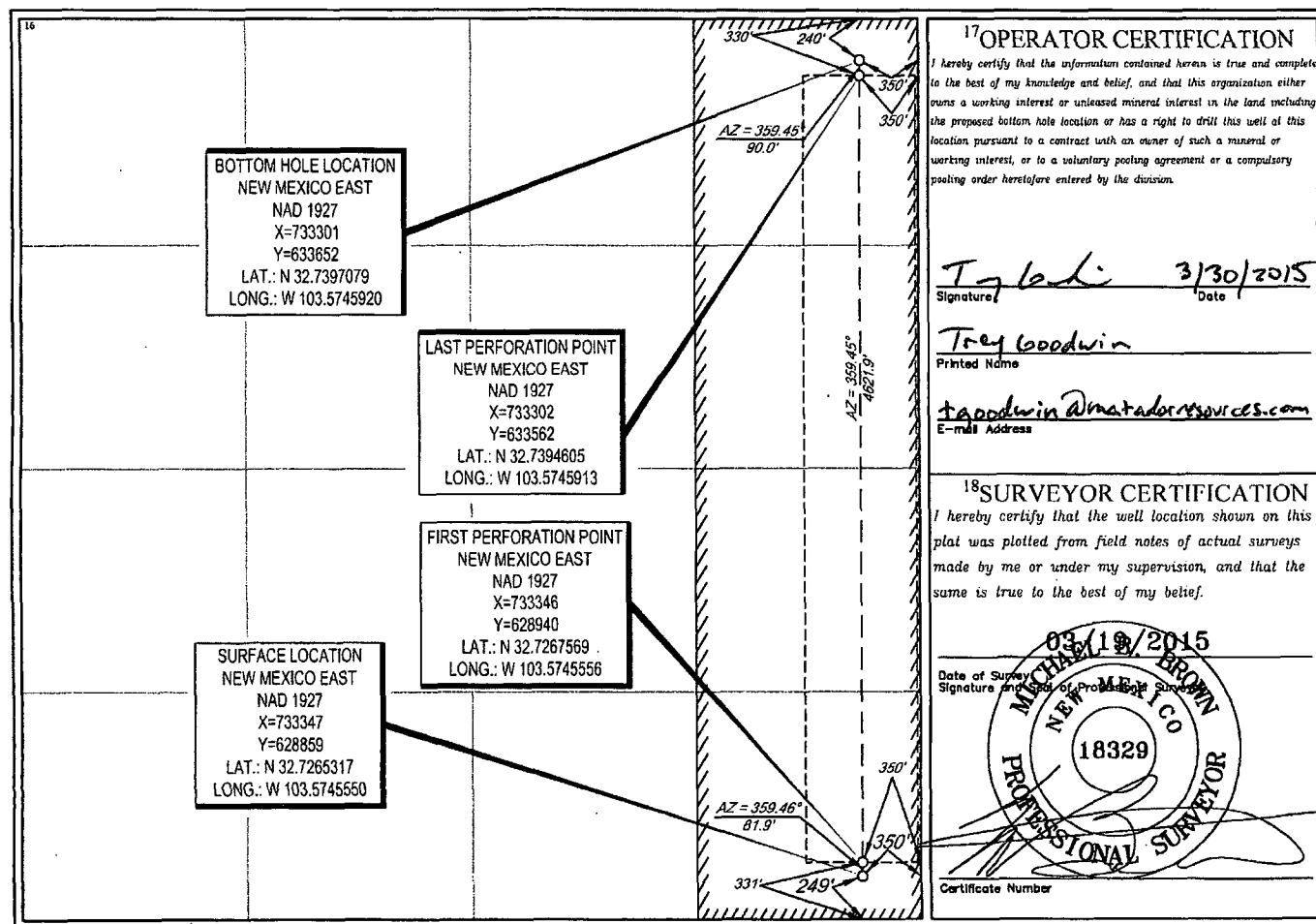
<sup>10</sup>Surface Location

| UL or lot no. | Section   | Township    | Range       | Lot Idn  | Feet from the | North/South line | Feet from the | East/West line | County     |
|---------------|-----------|-------------|-------------|----------|---------------|------------------|---------------|----------------|------------|
| <b>P</b>      | <b>20</b> | <b>18-S</b> | <b>34-E</b> | <b>-</b> | <b>249'</b>   | <b>SOUTH</b>     | <b>350'</b>   | <b>EAST</b>    | <b>LEA</b> |

| UL or lot no. | Section   | Township    | Range       | Lot Idn  | Feet from the | North/South line | Feet from the | East/West line | County     |
|---------------|-----------|-------------|-------------|----------|---------------|------------------|---------------|----------------|------------|
| <b>A</b>      | <b>20</b> | <b>18-S</b> | <b>34-E</b> | <b>-</b> | <b>240'</b>   | <b>NORTH</b>     | <b>350'</b>   | <b>EAST</b>    | <b>LEA</b> |

|  |                               |                                  |                         |
|--|-------------------------------|----------------------------------|-------------------------|
| <sup>11</sup> Dedicated Acres<br><b>160.00</b> | <sup>12</sup> Joint or Infill | <sup>13</sup> Consolidation Code | <sup>14</sup> Order No. |
|--|-------------------------------|----------------------------------|-------------------------|

No allowable will be assigned to this completion until all interests have been consolidated or a non-standard unit has been approved by the division.



APR 02 2015