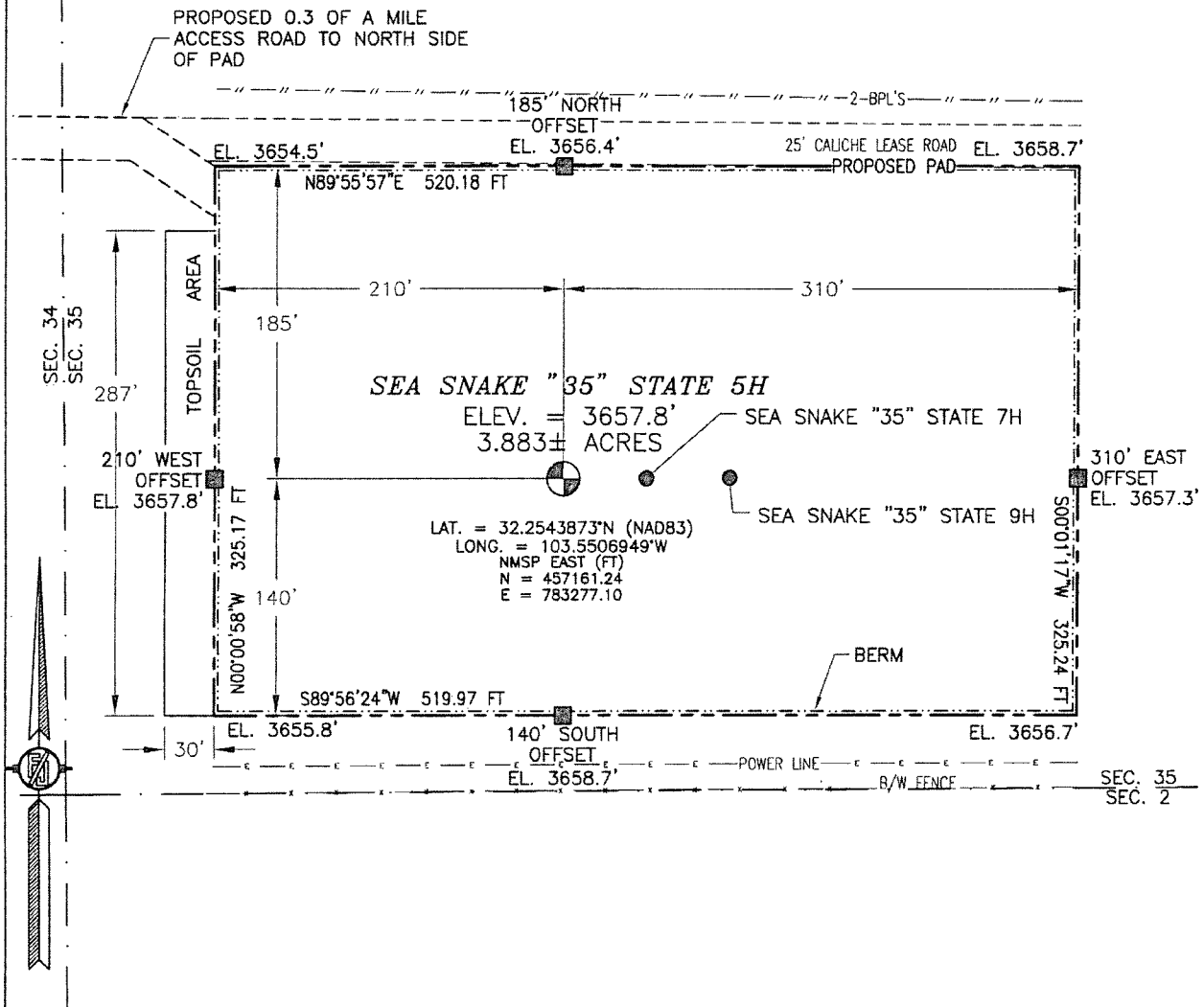


JUL 27 2015

SECTION 35, TOWNSHIP 23 SOUTH, RANGE 33 EAST, N.M.P.M.
LEA COUNTY, STATE OF NEW MEXICO

SITE MAP

NOTE: LATITUDE AND LONGITUDE COORDINATES ARE SHOWN USING THE NORTH AMERICAN DATUM OF 1983 (NAD83). LISTED NEW MEXICO STATE PLANE EAST COORDINATES ARE GRID (NAD83). BASIS OF BEARING AND DISTANCES USED ARE NEW MEXICO STATE PLANE EAST COORDINATES MODIFIED TO THE SURFACE



010 50 100 200

SCALE 1" = 100'

DIRECTIONS TO LOCATION

FROM THE INTERSECTION OF STATE HIGHWAY 128 AND CR J2 (BRININSTOOL ROAD) GO NORTHWEST ON CR J2 APPROX. 3.2 MILES TO CALICHE LEASE ROAD ON RIGHT PAST FRAC POND, GO EAST (RIGHT) APPROX. 0.46 OF A MILE, TURN NORTH GO APPROX. 450', TURN RIGHT GO APPROX. 0.41 OF A MILE TAKE ROAD NORTH SIDE OF PAD GO APPROX. 0.3 OF A MILE TO THE NORTHWEST PAD CORNER.

DEVON-ENERGY-PRODUCTION COMPANY, L.P.

SEA SNAKE "35" STATE 5H

LOCATED 185 FT. FROM THE SOUTH LINE
AND 300 FT. FROM THE WEST LINE OF
SECTION 35, TOWNSHIP 23 SOUTH,
RANGE 33 EAST, N.M.P.M.

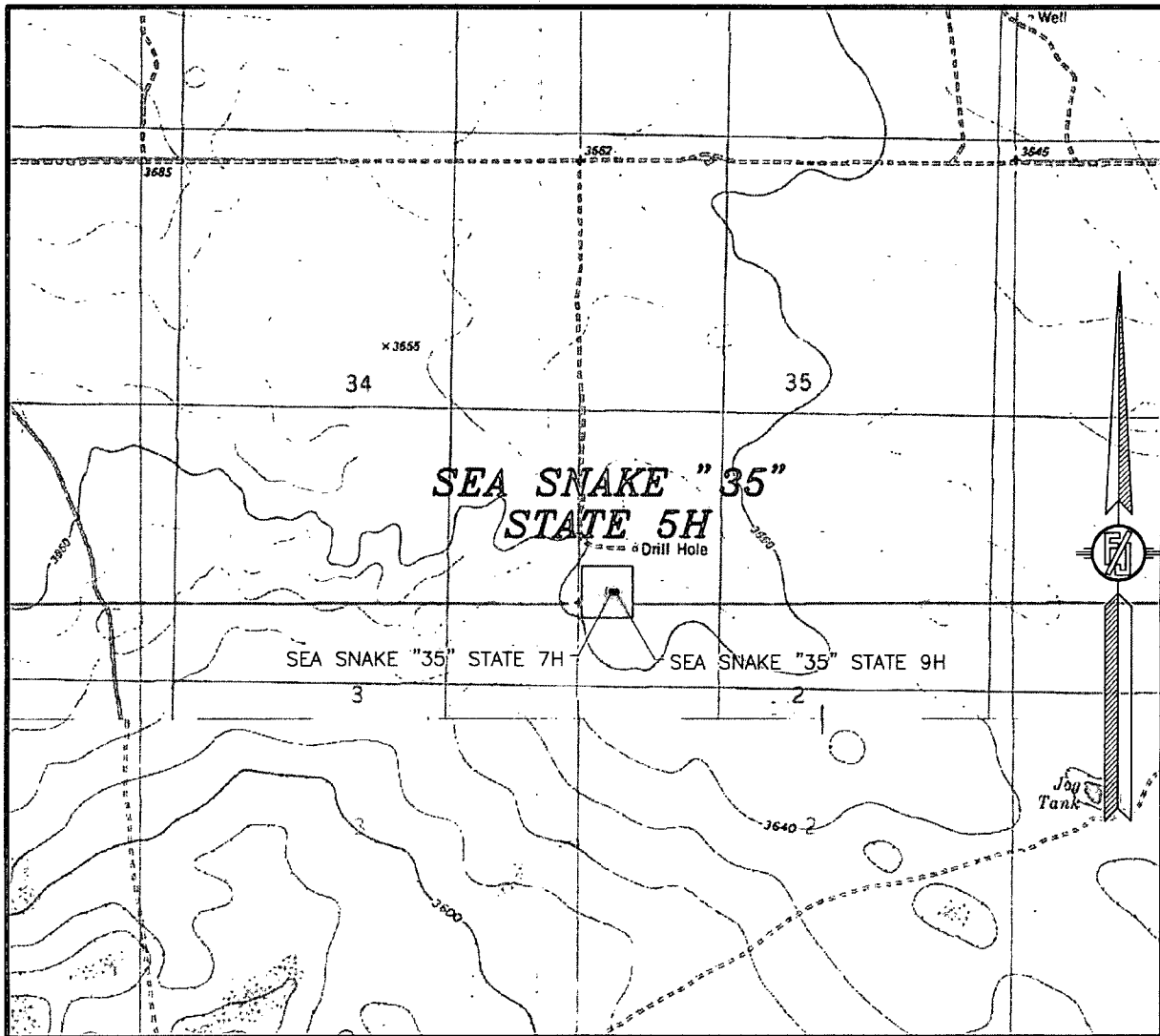
LEA COUNTY, STATE OF NEW MEXICO

APRIL 20, 2015

SURVEY NO. 3813

MADRON SURVEYING, INC. 301 SOUTH CANAL (575) 234-3341 CARLSBAD, NEW MEXICO

SECTION 35, TOWNSHIP 23 SOUTH, RANGE 33 EAST, N.M.P.M.
LEA COUNTY, STATE OF NEW MEXICO
LOCATION VERIFICATION MAP



USGS QUAD MAP:
TIP TOP WELLS

NOT TO SCALE

DEVON ENERGY PRODUCTION COMPANY, L.P.

SEA SNAKE "35" STATE 5H

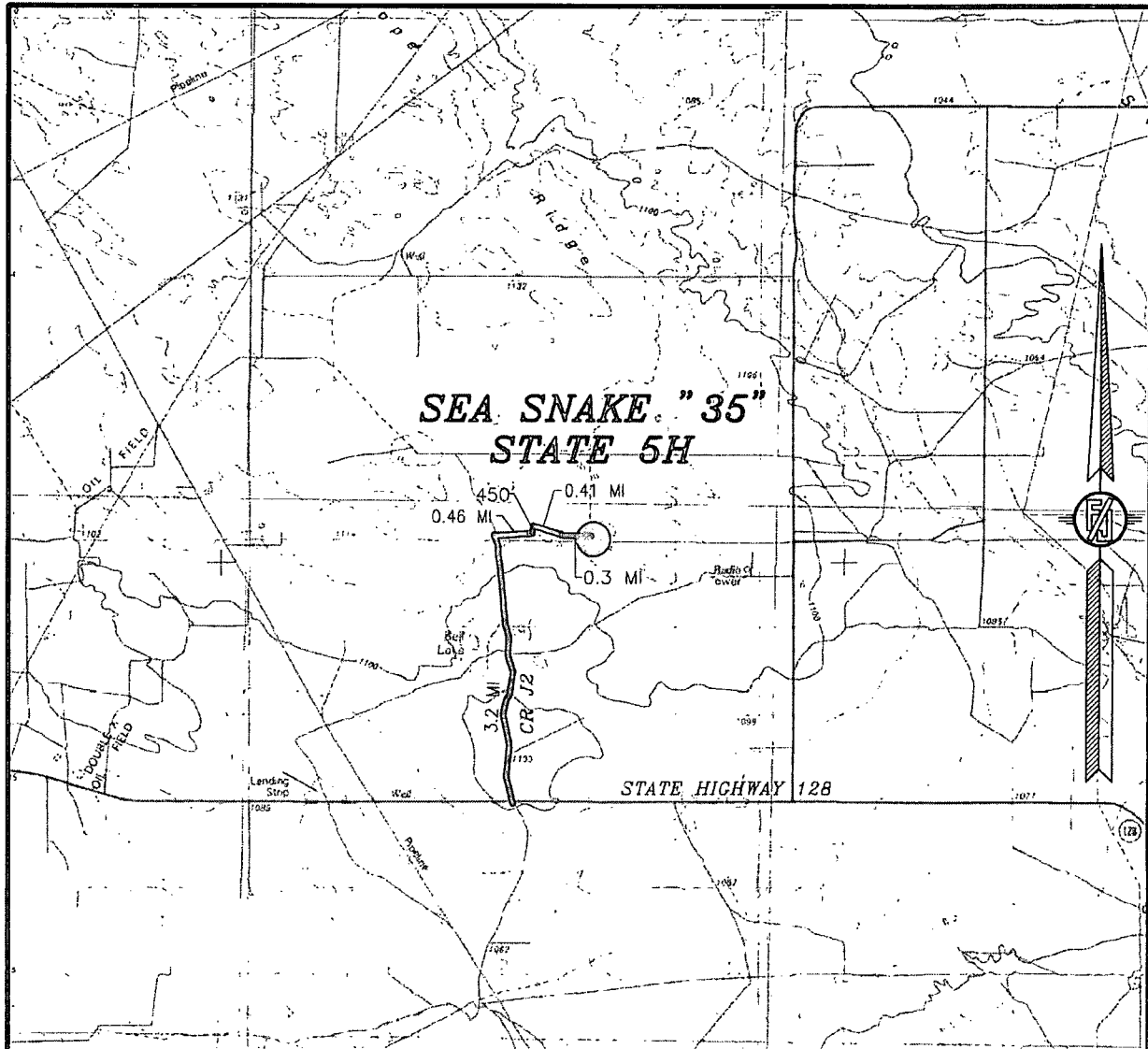
LOCATED 185 FT. FROM THE SOUTH LINE
AND 300 FT. FROM THE WEST LINE OF
SECTION 35, TOWNSHIP 23 SOUTH,
RANGE 33 EAST, N.M.P.M.
LEA COUNTY, STATE OF NEW MEXICO

APRIL 20, 2015

SURVEY NO. 3813

MADRON SURVEYING, INC. 301 SOUTH CANAL (575) 234-3341 CARLSBAD, NEW MEXICO

SECTION 35, TOWNSHIP 23 SOUTH, RANGE 33 EAST, N.M.P.M.
LEA COUNTY, STATE OF NEW MEXICO
VICINITY MAP



DISTANCES IN MILES

NOT TO SCALE

DEVON ENERGY PRODUCTION COMPANY, L.P.

SEA SNAKE "35" STATE 5H

LOCATED 185 FT. FROM THE SOUTH LINE
AND 300 FT. FROM THE WEST LINE OF
SECTION 35, TOWNSHIP 23 SOUTH,
RANGE 33 EAST, N.M.P.M.
LEA COUNTY, STATE OF NEW MEXICO

DIRECTIONS TO LOCATION

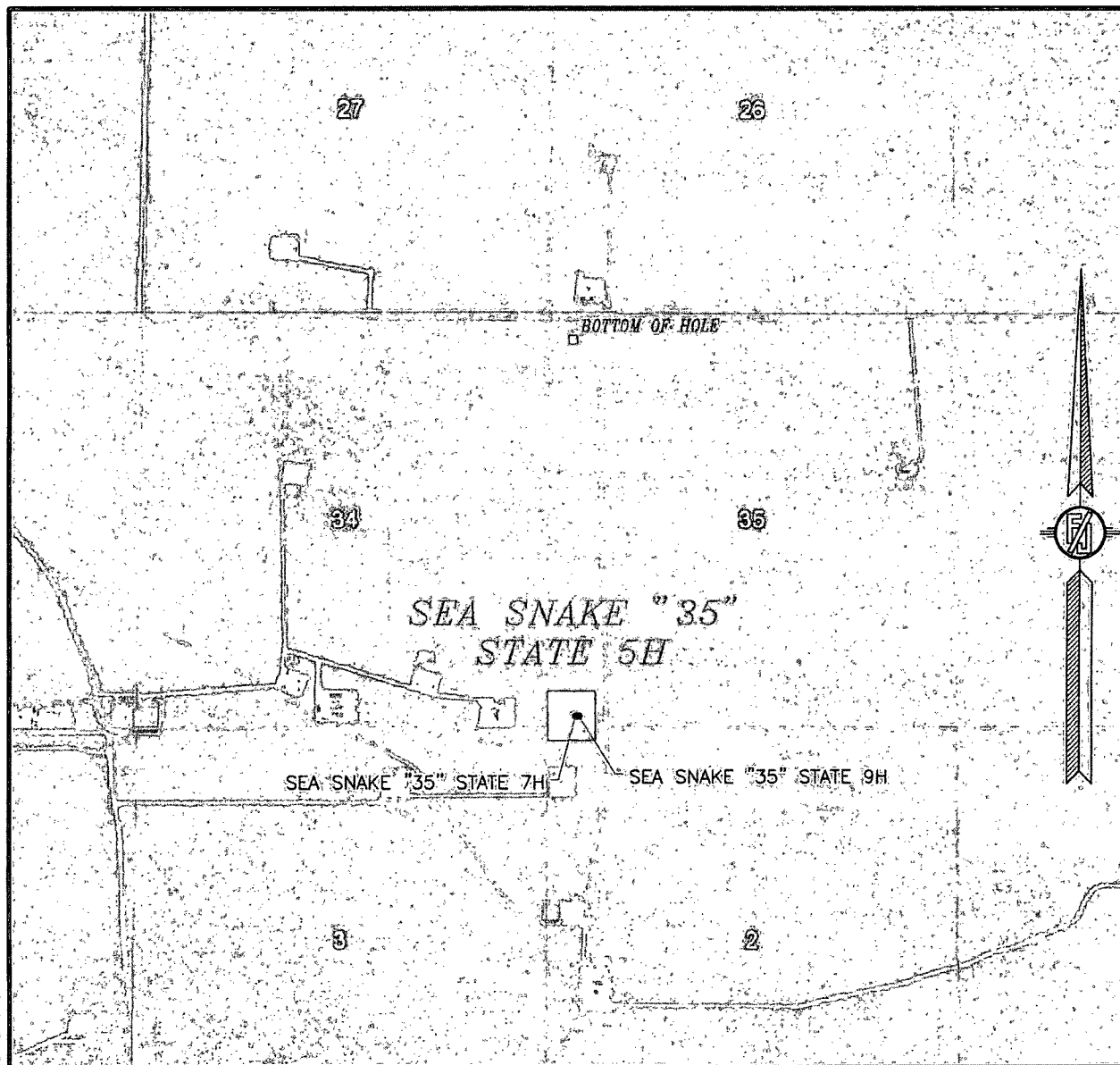
FROM THE INTERSECTION OF STATE HIGHWAY 128 AND CR J2
(BRINSTOOL ROAD) GO NORTHWEST ON CR J2 APPROX. 3.2 MILES
TO CALICHE LEASE ROAD ON RIGHT PAST FRAC POND, GO EAST
(RIGHT) APPROX. 0.46 OF A MILE, TURN NORTH GO APPROX. 450',
TURN RIGHT GO APPROX. 0.41 OF A MILE TAKE ROAD NORTH SIDE
OF PAD GO APPROX. 0.3 OF A MILE TO THE NORTHWEST PAD
CORNER.

APRIL 20, 2015

SURVEY NO. 3813

MADRON SURVEYING, INC. 301 SOUTH CANAL (575) 234-3341 CARLSBAD, NEW MEXICO

SECTION 35, TOWNSHIP 23 SOUTH, RANGE 33 EAST, N.M.P.M.
LEA COUNTY, STATE OF NEW MEXICO
AERIAL PHOTO



NOT TO SCALE
AERIAL PHOTO:
GOOGLE EARTH
FEBRUARY 2014

DEVON ENERGY PRODUCTION COMPANY, L.P.

SEA SNAKE "35" STATE 5H

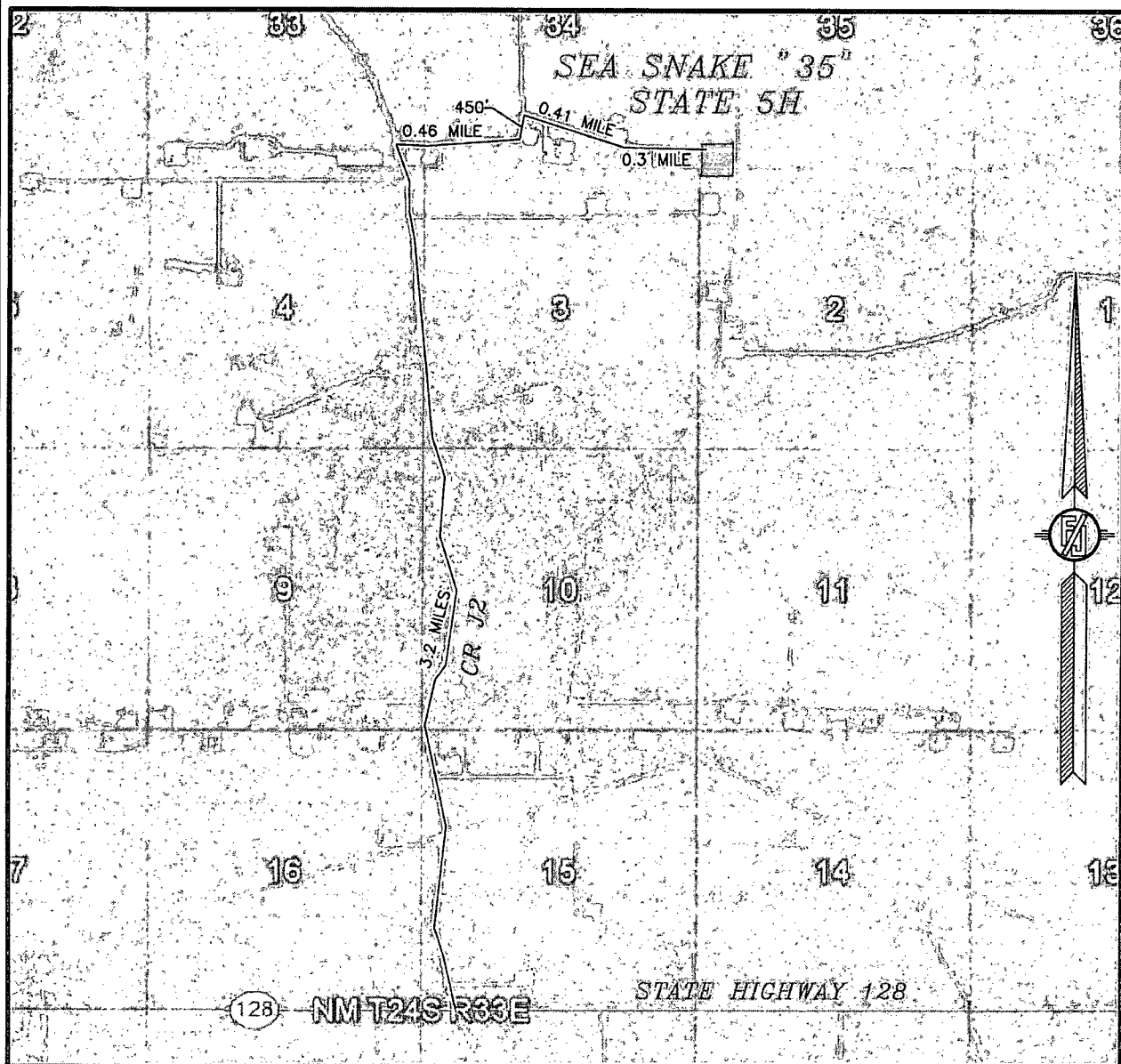
LOCATED 185 FT. FROM THE SOUTH LINE
AND 300 FT. FROM THE WEST LINE OF
SECTION 35, TOWNSHIP 23 SOUTH,
RANGE 33 EAST, N.M.P.M.
LEA COUNTY, STATE OF NEW MEXICO

APRIL 20, 2015

SURVEY NO. 3813

MADRON SURVEYING, INC. 301 SOUTH CANAL (575) 234-3341 CARLSBAD, NEW MEXICO

SECTION 35, TOWNSHIP 23 SOUTH, RANGE 33 EAST, N.M.P.M.
LEA COUNTY, STATE OF NEW MEXICO
ACCESS AERIAL ROUTE MAP



NOT TO SCALE
AERIAL PHOTO:
GOOGLE EARTH
FEBRUARY 2014

DEVON-ENERGY-PRODUCTION COMPANY, L.P.

SEA SNAKE "35" STATE 5H

LOCATED 185 FT. FROM THE SOUTH LINE
AND 300 FT. FROM THE WEST LINE OF
SECTION 35, TOWNSHIP 23 SOUTH,
RANGE 33 EAST, N.M.P.M.
LEA COUNTY, STATE OF NEW MEXICO

APRIL 20, 2015

SURVEY NO. 3813

MADRON SURVEYING, INC. 301 SOUTH CANAL (575) 234-3341 CARLSBAD, NEW MEXICO