

District I
1625 N. French Dr., Hobbs, NM 88240
Phone: (575) 393-6161 Fax: (575) 393-0720
District II
811 S. First St., Artesia, NM 88210
Phone: (575) 748-1283 Fax: (575) 748-9720
District III
1000 Rio Brazos Road, Aztec, NM 87410
Phone: (505) 334-6178 Fax: (505) 334-6170
District IV
1220 S.-St.-Francis-Dr.; Santa Fe; NM 87505
Phone: (505) 476-3460 Fax: (505) 476-3462

State of New Mexico
Energy, Minerals & Natural Resources Department **HOBBS OCD**
OIL CONSERVATION DIVISION
1220 South St. Francis Dr.
Santa Fe, NM 87505

Form C-102
Revised August 1, 2011
Submit one copy to appropriate
District Office
 AMENDED REPORT

JUL 27 2015

RECEIVED

WELL LOCATION AND ACREAGE DEDICATION PLAT

1 API Number 30-025-42706		2 Pool Code 97900		3 Pool Name RED HILLS UPPER BONE SPRING SHALE					
4 Property Code 315055		5 Property Name SALADO DRAW 10 A1PA FEDERAL				6 Well Number 1H			
7 GRID NO. 14744		8 Operator Name MEWBOURNE OIL COMPANY				9 Elevation 3325'			
10 Surface Location									
UL or lot no. P	Section 10	Township 26S	Range 33E	Lot Idn	Feet from the 185	North/South line SOUTH	Feet From the 380	East/West line EAST	County LEA
11 Bottom Hole Location If Different From Surface									
UL or lot no. A	Section 10	Township 26S	Range 33E	Lot Idn	Feet from the 330	North/South line NORTH	Feet from the 330	East/West line EAST	County LEA
12 Dedicated Acres 160	13 Joint or Infill	14 Consolidation Code		15 Order No.					

No allowable will be assigned to this completion until all interest have been consolidated or a non-standard unit has been approved by the division.

16

N 89°40'20" E 2642.29'

NAD 27 GRID - NM EAST

SURFACE LOCATION

N 383193.7 - E 741950.7

LAT: 32.05110885' N
LONG: 103.55241094' W

BOTTOM HOLE

N 387989.2 - E 741995.7

CORNER DATA

NAD 27 GRID - NM EAST

A: CALCULATED CORNER
N 382979.6 - E 737041.3

B: FOUND BRASS CAP "1913"
N 385620.4 - E 737025.8

C: FOUND BRASS CAP "1913"
N 388260.2 - E 737007.4

D: FOUND BRASS CAP "1913"
N 388275.3 - E 739649.2

E: FOUND BRASS CAP "1913"
N 388289.8 - E 742293.4

F: FOUND BRASS CAP "1913"
N 383010.9 - E 742332.0

G: FOUND BRASS CAP "1913"
N 382995.8 - E 739682.6

S 89°38'51" W 2641.84'

N 00°23'55" W 2640.40'

N 00°20'11" W 2641.34'

N 89°41'11" E 2644.81'

330'

330'

3321.1' 650' 3325.4'

600'

S. L.

3321.3' 3343.4'

10

Project Area →

Producing Area →

SEE DETAIL "A"

185' 380'

S 89°40'27" W 2649.95'

N 00°32'15" E 4796.58'

S 00°25'06" E 5280.03'

17 OPERATOR CERTIFICATION

I hereby certify that the information contained herein is true and complete to the best of my knowledge and belief, and that this organization either owns a working interest or unleased mineral interest in the land including the proposed bottom hole location or has a right to drill this well at this location pursuant to a contract with an owner of such a mineral or working interest, or to a voluntary pooling agreement or a compulsory pooling order heretofore entered by the division.

Bradley Bishop 4-8-15
Signature Date

BRADLEY BISHOP
Printed Name

E-mail Address

18 SURVEYOR CERTIFICATION

I hereby certify that the well location shown on this plat was plotted from field notes of actual surveys made by me or under my supervision, and that the same is true and correct to the best of my belief.

1-15-2015
Date of Survey

Signature and Seal of Professional Surveyor

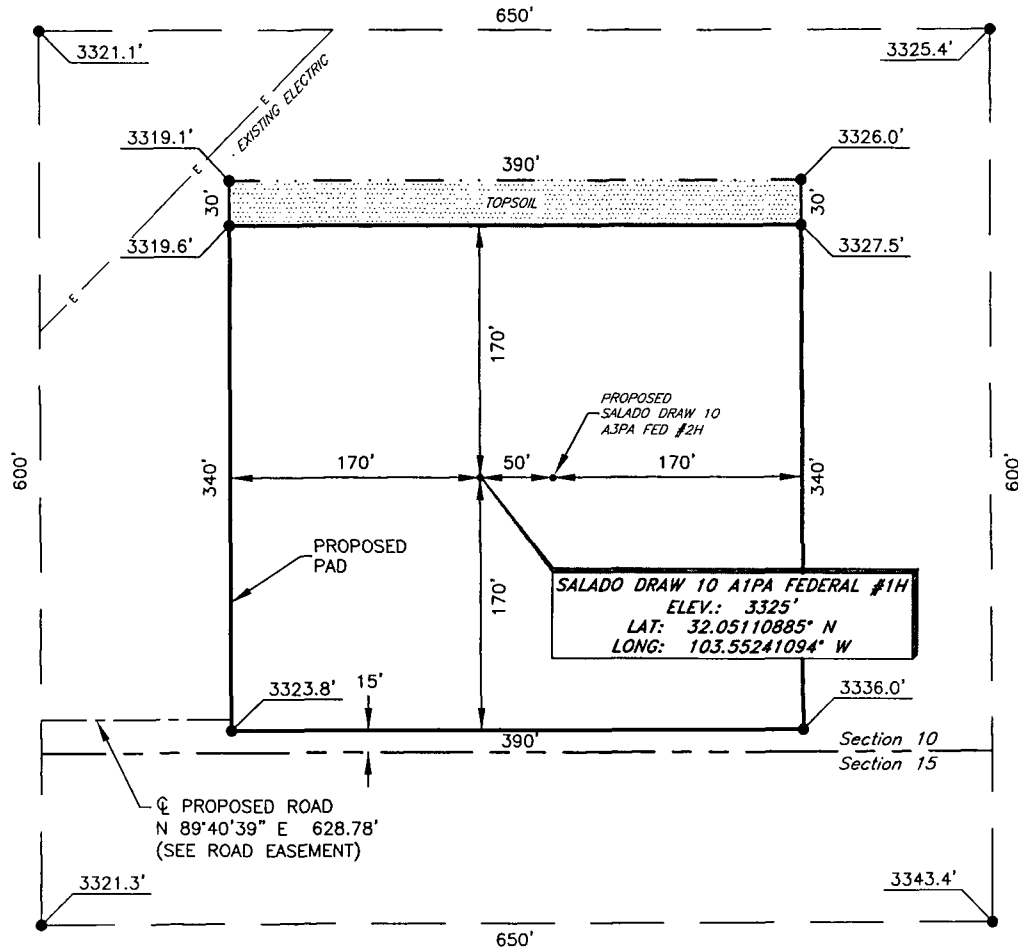
19680
Certificate Number

ROBERT M. HOWETT
PROFESSIONAL SURVEYOR
NEW MEXICO
19680

RRC - Firm No.: TX 10193838 NM 4655451 - Job No.: LS140584

JUL 28 2015

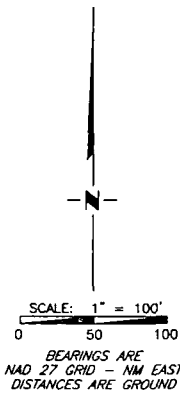
MEWBOURNE OIL COMPANY
SALADO DRAW 10 A1PA FEDERAL #1H
 (185' FSL & 380' FEL)
 SECTION 10, T26S, R33E
 N. M. P. M., LEA CO., NEW MEXICO



SALADO DRAW 10 A1PA FEDERAL #1H
 ELEV.: 3325'
 LAT: 32.05110885° N
 LONG: 103.55241094° W

DIRECTIONS TO LOCATION

From the intersection of CR-1 (Orla Rd.) and CR-2 (Battle Axe Rd.)
 Go East on CR-2 approx. 10.5 miles to a lease road on the right;
 Turn right and go South approx. 256 feet thru fence to lease road on left;
 Turn left and go East approx. 0.4 miles to proposed road;
 Go East approx. 0.3 miles following proposed road to this location.



Firm No.: TX 10193838 NM 4655451

Copyright 2014 - All Rights Reserved

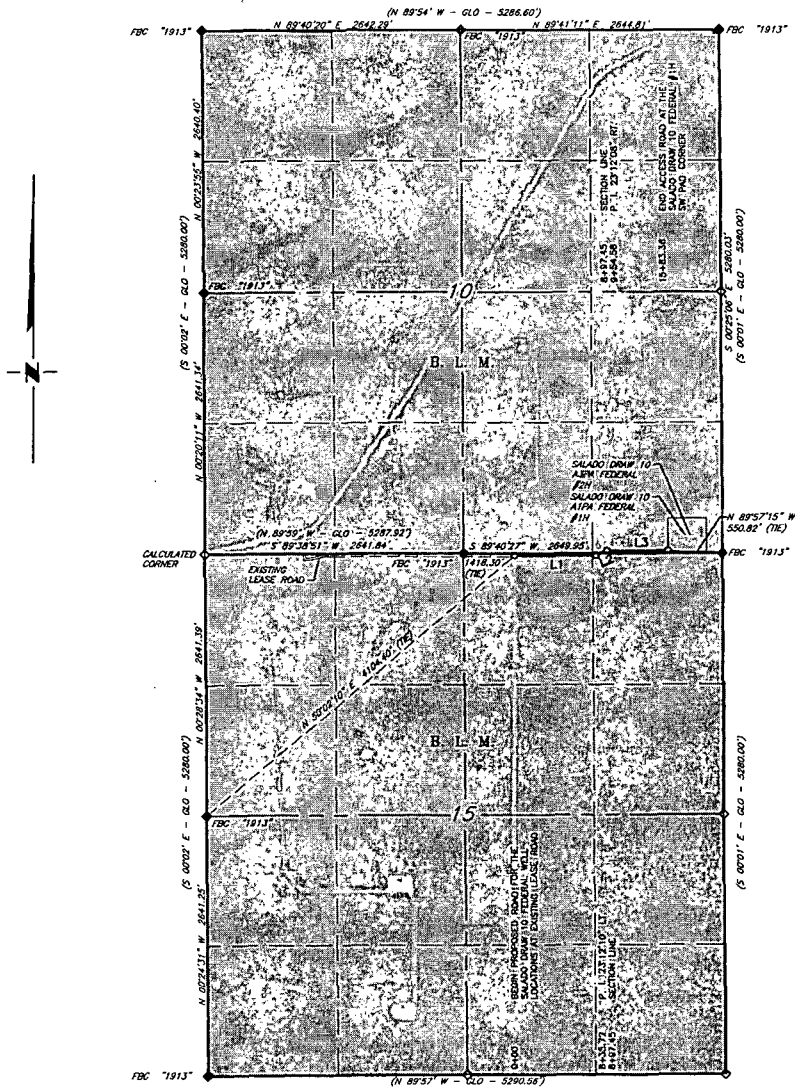
NO.	REVISION	DATE
JOB NO.: LS140584		
DWG. NO.: 140584PAD		

RRC

308 W. BROADWAY ST., HOBBS, NM 88240 (575) 964-8200

SCALE: 1" = 100'
DATE: 1-19-2015
SURVEYED BY: BK/KR
DRAWN BY: CMJ
APPROVED BY: RMH
SHEET : 1 OF 1

MEWBOURNE OIL COMPANY
PROPOSED ACCESS ROAD FOR THE SALADO DRAW 10
A1PA FEDERAL #1H & A3PA FEDERAL #2H WELL LOCATIONS
SECTIONS 10 & 15, T26S, R33E,
N. M. P. M., LEA CO., NEW MEXICO



LINE TABLE		
LINE	BEARING	LENGTH
L1	N 89°40'41" E	835.72'
L2	N 66°28'30" E	118.86'
L3	N 89°40'39" E	628.78'

SCALE: 1" = 1500'
 0 750' 1500'

BEARINGS ARE GRID NAD 27
 NM EAST
 DISTANCES ARE HORIZ. GROUND.

LEGEND

- () RECORD DATA - GLO
- ◆ FOUND MONUMENT AS NOTED
- PROPOSED ACCESS ROAD

Firm No.: TX 10193838 NM 4655451

Copyright 2014 - All Rights Reserved

NO.	REVISION	DATE

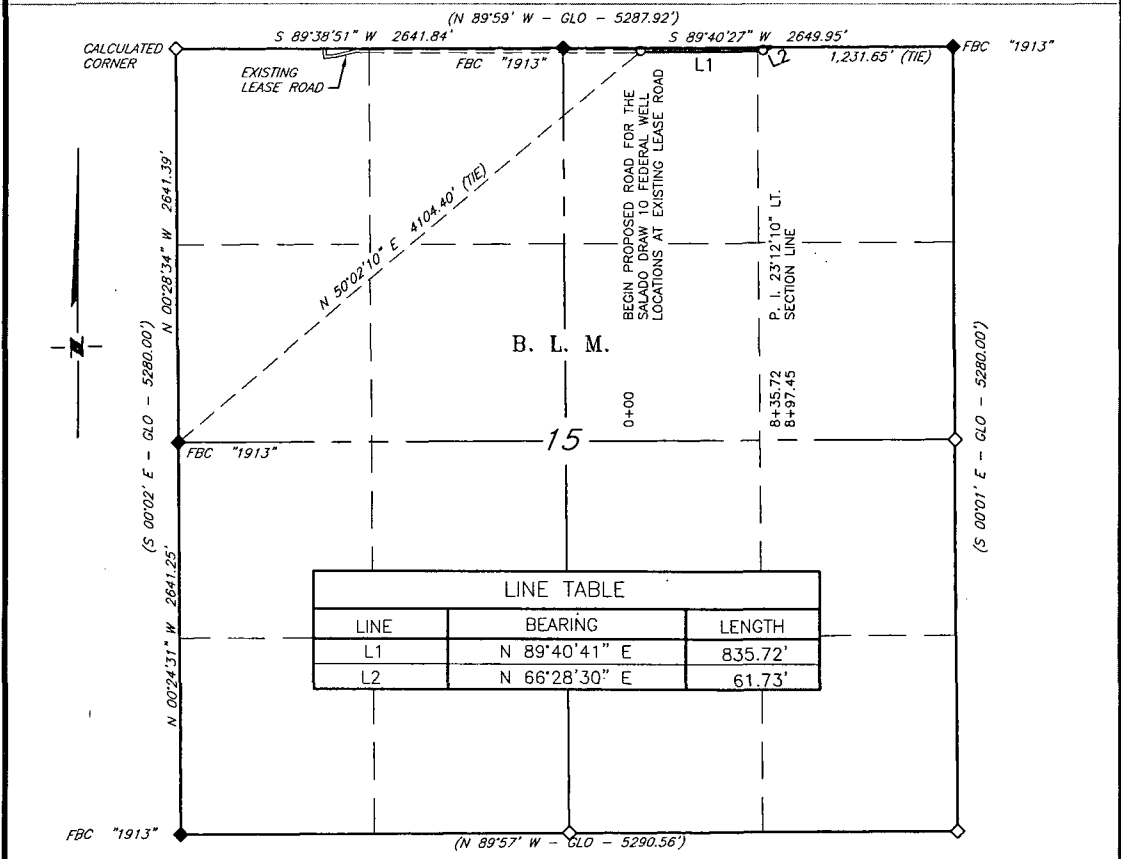
JOB NO.: LS140584
 DWG. NO.: 140584RD1



308 W. BROADWAY ST., HOBBS, NM 88240 (575) 964-8200

SCALE: 1" = 1500'
DATE: 1-15-2015
SURVEYED BY: BK/KR
DRAWN BY: RMH
APPROVED BY: RMH
SHEET : 1 OF 3

MEWBOURNE OIL COMPANY
PROPOSED ACCESS ROAD FOR THE SALADO DRAW 10
A1PA FEDERAL #1H & A3PA FEDERAL #2H WELL LOCATIONS
SECTION 15, T26S, R33E,
N. M. P. M., LEA CO., NEW MEXICO



LINE TABLE		
LINE	BEARING	LENGTH
L1	N 89°40'41" E	835.72'
L2	N 66°28'30" E	61.73'

DESCRIPTION

A strip of land 30 feet wide, being 897.45 feet or 54.391 rods in length, lying in Section 15, Township 26 South, Range 33 East, N. M. P. M., Lea County, New Mexico, being 15 feet left and 15 feet right of the following described survey of a centerline across B. L. M. land

BEGINNING at Engr. Sta. 0+00, a point in the Northeast quarter of Section 15, which bears N 50°02'10" E, 4,104.40 feet from a brass cap, stamped "1913", found for the West quarter corner of Section 15;

Thence N 89°40'41" E, 835.72 feet, to Engr. Sta. 8+35.72, a P. I. of 23°12'10" left;

Thence N 66°28'30" E, 61.73 feet, to Engr. Sta. 8+97.45, a point on the North line of Section 15, which bears S 89°40'27" W, 1,231.65 feet from a brass cap, stamped "1913", found for the Northeast corner of Section 15.

Said strip of land contains 0.618 acres, more or less and is allocated by forties as follows:

SCALE: 1" = 1000'	NW 1/4 NE 1/4	48.432 Rods	0.550 Acres
0 500' 1000'	NE 1/4 NE 1/4	5.959 Rods	0.068 Acres

BEARINGS ARE GRID NAD 27
 NM EAST
 DISTANCES ARE HORIZ. GROUND.

- LEGEND**
- () RECORD DATA - GLO
 - ◆ FOUND MONUMENT AS NOTED
 - PROPOSED ACCESS ROAD

I, R. M. Howett, a N. M. Professional Surveyor, hereby certify that I prepared this plat from an actual survey made on the ground under my direct supervision, said survey and plat meet the Min. Stds. for Land Surveying in the State of N. M. and are true and correct to the best of my knowledge and belief.

Robert M. Howett
 Robert M. Howett NM PS 19680



Firm No.: TX 1019383B NM 4655451

Copyright 2014 - All Rights Reserved

NO.	REVISION	DATE

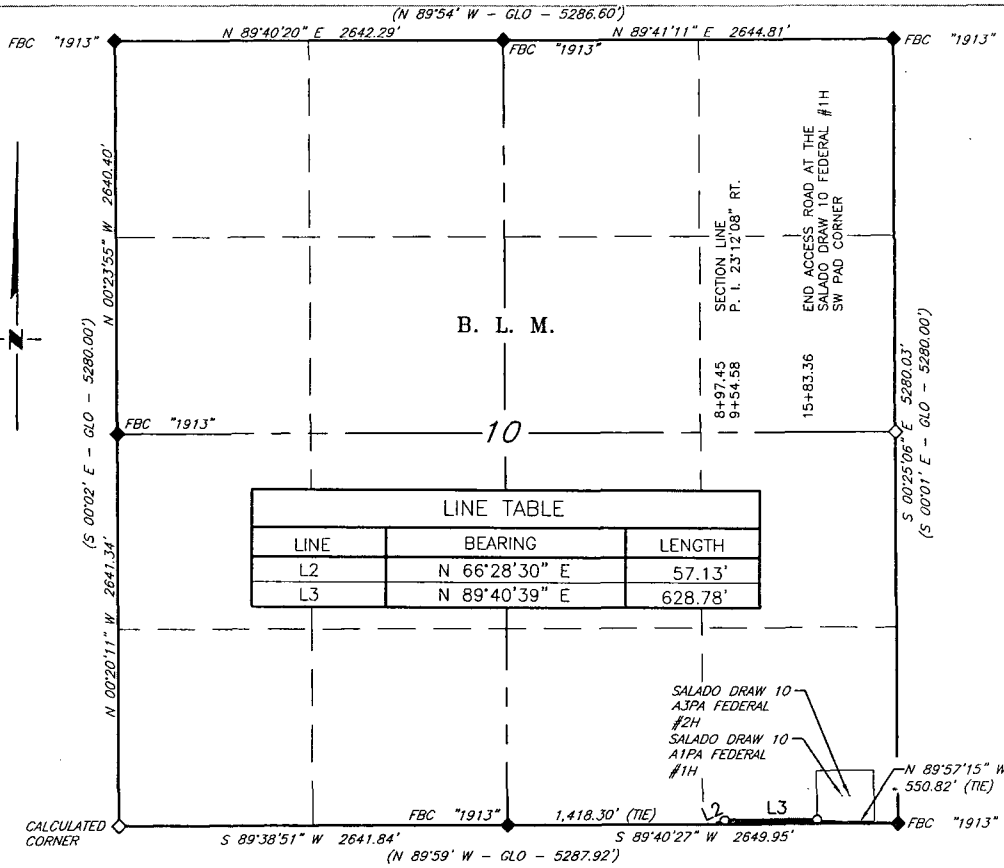
JOB NO.: LS140584
 DWG. NO.: 140584RD2



308 W. BROADWAY ST., HOBBS, NM 88240 (575) 964-8200

SCALE: 1" = 1000'
DATE: 1-15-2015
SURVEYED BY: BK/KR
DRAWN BY: RMH
APPROVED BY: RMH
SHEET : 2 OF 3

**MEWBOURNE OIL COMPANY
 PROPOSED ACCESS ROAD FOR THE SALADO DRAW 10
 A1PA FEDERAL #1H & A3PA FEDERAL #2H WELL LOCATIONS
 SECTION 10, T26S, R33E,
 N. M. P. M., LEA CO., NEW MEXICO**



DESCRIPTION

A strip of land 30 feet wide, being 685.91 feet or 41.570 rods in length, lying in Section 10, Township 26 South, Range 33 East, N. M. P. M., Lea County, New Mexico, being 15 feet left and 15 feet right of the following described survey of a centerline across B. L. M. land

BEGINNING at Engr. Sta. 8+97.45, a point on the South line of Section 10, which bears N 89°40'47" E, 1,418.30 feet from a brass cap, stamped "1913", found for the South quarter corner of Section 10;

Thence N 66°28'30" E, 57.13 feet, to Engr. Sta. 9+54.48, a P. I. of 23°12'08" right;

Thence N 89°40'39" E, 628.78 feet, to Engr. Sta. 15+83.36, the End of Survey, a point which bears N 89°57'15" W, 550.82 feet from a brass cap, stamped "1913", found for the Southeast corner of Section 10.

Said strip of land contains 0.618 acres, more or less and is allocated by forties as follows:

SCALE: 1" = 1000'
 0 500' 1000'

SE 1/4 SE 1/4 41.570 Rods 0.472 Acres

BEARINGS ARE GRID NAD 27
 NM EAST
 DISTANCES ARE HORIZ. GROUND.

LEGEND
 () RECORD DATA - GLO
 ◆ FOUND MONUMENT AS NOTED
 — PROPOSED ACCESS ROAD

I, R. M. Howett, a N. M. Professional Surveyor, hereby certify that I prepared this plat from an actual survey made on the ground under my direct supervision, said survey and plat meet the Min. Stds. for Land Surveying in the State of N. M. and are true and correct to the best of my knowledge and belief.

Robert M. Howett
 Robert M. Howett NM PS 19680



Firm No.: TX 1019383B NM 4655451

Copyright 2014 - All Rights Reserved

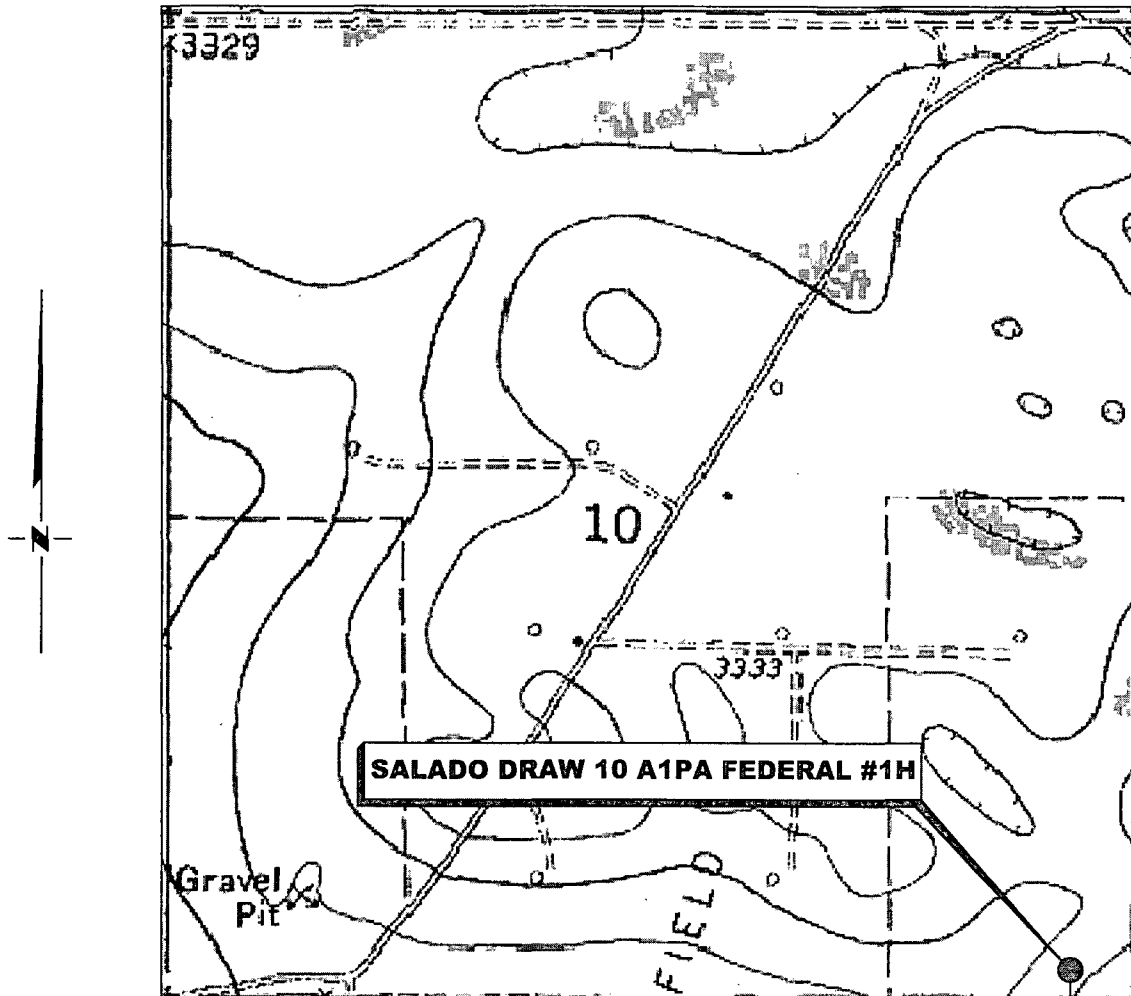
NO.	REVISION	DATE
JOB NO.: LS140584		
DWG. NO.: 140584RD3		



308 W. BROADWAY ST., HOBBS, NM 88240 (575) 964-8200

SCALE: 1" = 1000'
DATE: 1-15-2015
SURVEYED BY: BK/KR
DRAWN BY: RMH
APPROVED BY: RMH
SHEET : 3 OF 3

LOCATION VERIFICATION MAP



*SECTION 10, TWP. 26 SOUTH, RGE. 33 EAST,
N. M. P. M., LEA CO., NEW MEXICO*

OPERATOR: Mewbourne Oil Company
 LEASE: Salado Draw 10 A1PA Federal
 WELL NO.: 1H
 ELEVATION: 3325'

LOCATION: 185' FSL & 380' FEL
 CONTOUR INTERVAL:
 USGS TOPO. SOURCE MAP:
Paduca Breaks East, NM-(1973)

Firm No.: TX 10193838 NM 4655451

Copyright 2014 - All Rights Reserved

NO.	REVISION	DATE
JOB NO.: LS140584		
DWG. NO.: 140584LVM		

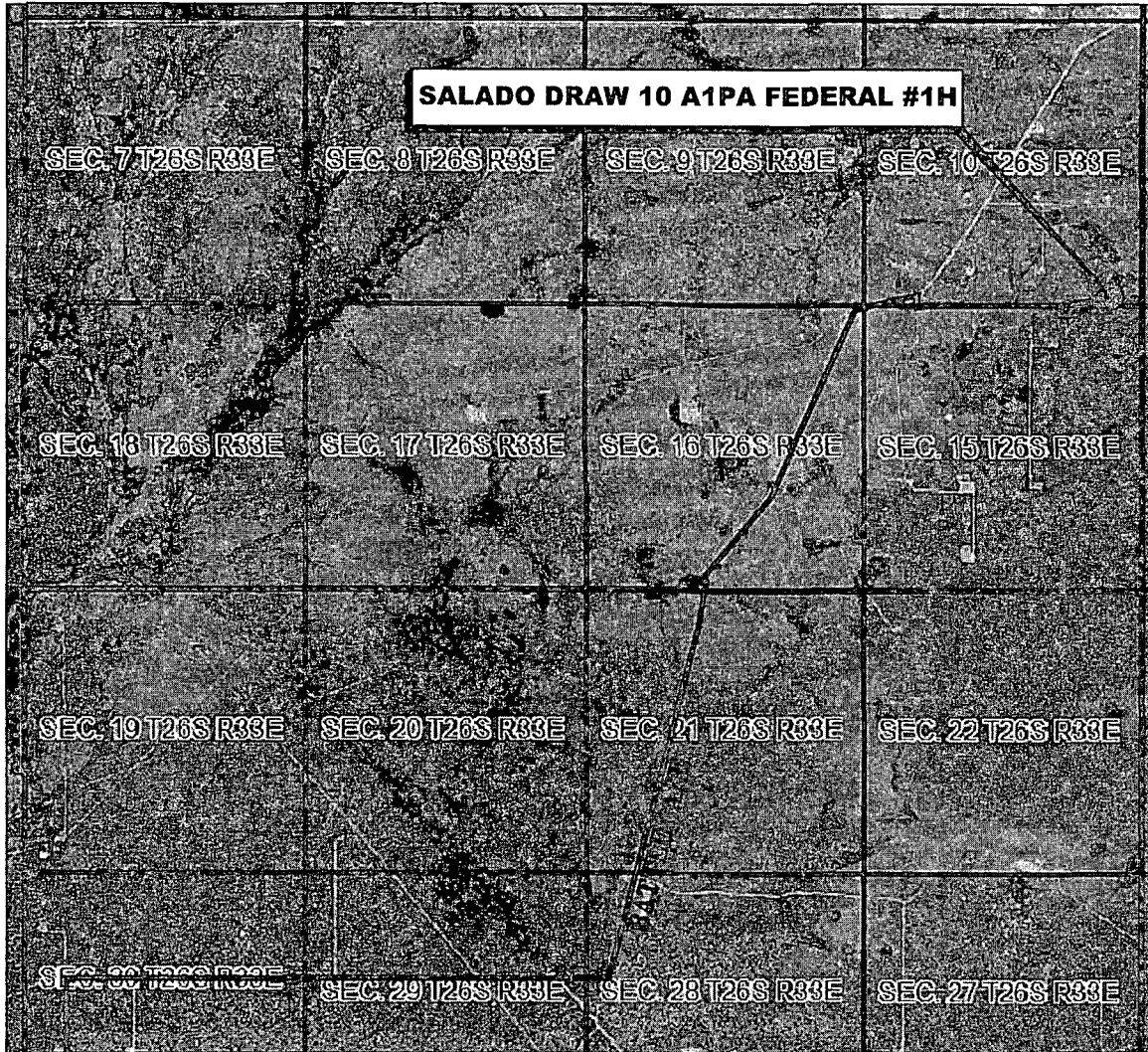
RRC

308 W. BROADWAY ST., HOBBS, NM 88240 (575) 964-8200

SCALE: 1" = 1000'
DATE: 1-15-2015
SURVEYED BY: BK/KR
DRAWN BY: RMH
APPROVED BY: RMH
SHEET : 1 OF 1

VICINITY MAP

NOT TO SCALE



*SECTION 10, TWP. 26 SOUTH, RGE. 33 EAST,
N. M. P. M., LEA COUNTY, NEW MEXICO*

OPERATOR: Mewbourne Oil Company
 LEASE: Salado Draw 10 A1PA Federal
 WELL NO.: 1H

LOCATION: 185' FSL & 380' FEL
 ELEVATION: 3325'

Firm No.: TX 10193838 NM 4655451

Copyright 2014 - All Rights Reserved

NO.	REVISION	DATE
JOB NO.: LS140584		
DWG. NO.: 140584VM		

RRC

308 W. BROADWAY ST., HOBBS, NM 88240 (575) 964-8200

SCALE: N. T. S.
DATE: 1-15-2015
SURVEYED BY: BK/KR
DRAWN BY: RMH
APPROVED BY: RMH
SHEET : 1 OF 1

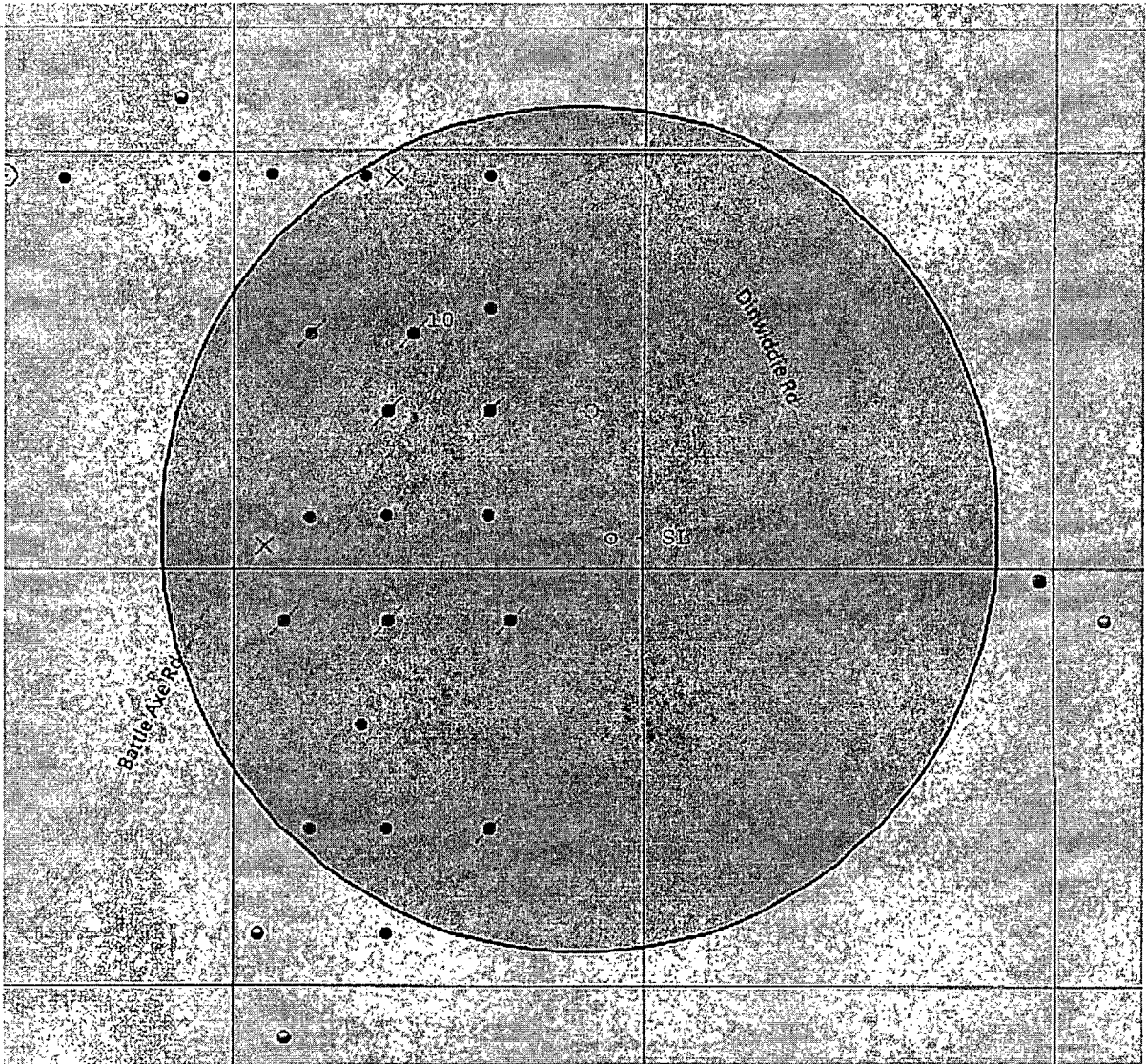


Exhibit 4 - SL - Salado Draw 10 A1PA Fed #1H - 185' FSL & 380' FEL, Sec. 10 T26S R33E

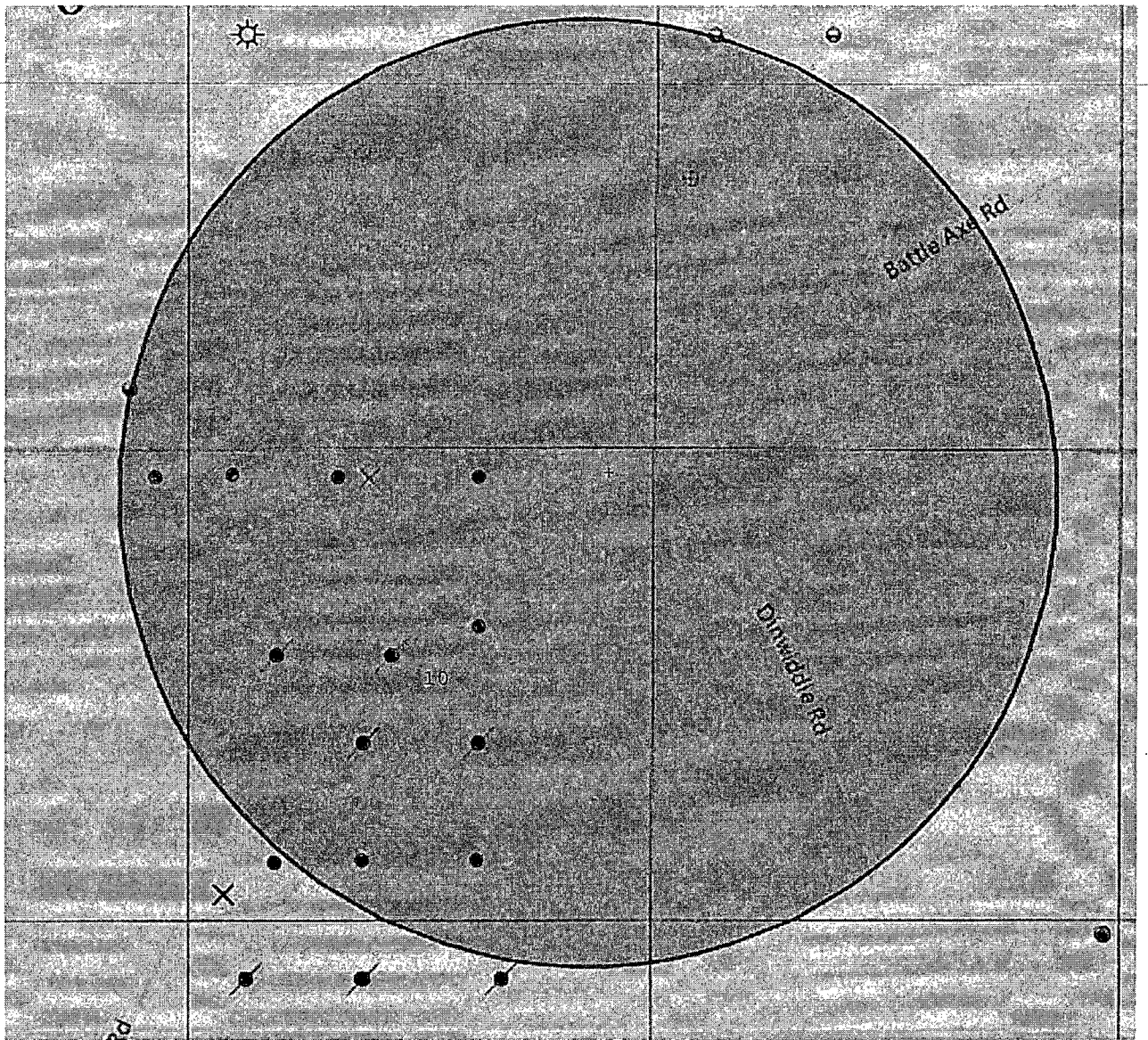


Exhibit 4A - BHL - Salado Draw 10 AlPA Fed #1H - 330' FNL & 330' FEL, Sec 10 T26S R33E

H2S Diagram

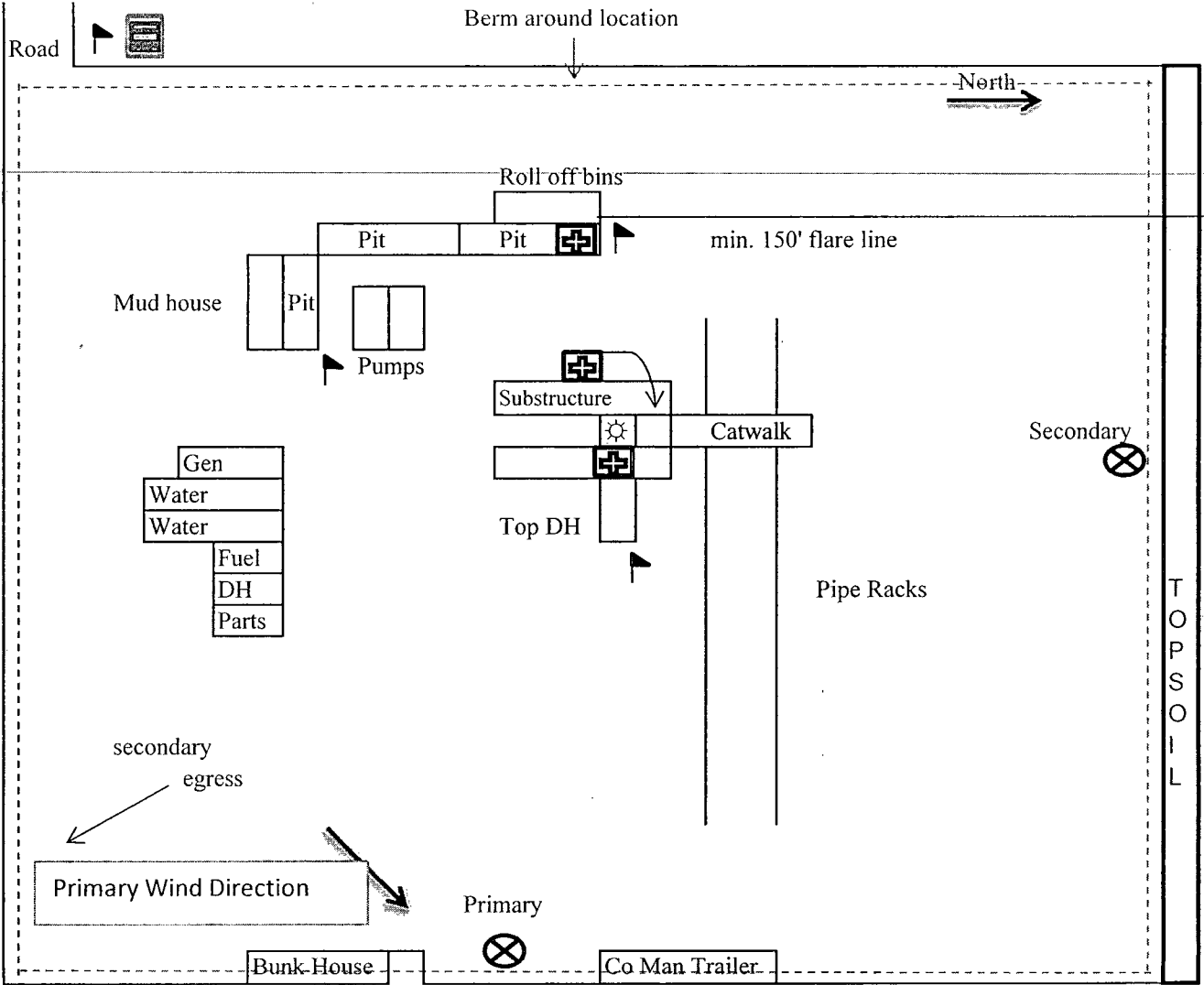


Exhibit 5

-  = Safety Stations
-  = H2S Monitors
-  = Wind Markers
-  = Warning Signs

Mewbourne Oil Company
 Salado Draw 10 A1PA Fed #1H
 185' FSL & 380' FEL
 Sec 10-T26S-R33E
 Lea County, NM

Closed Loop Pad Dimensions 340' x 390'

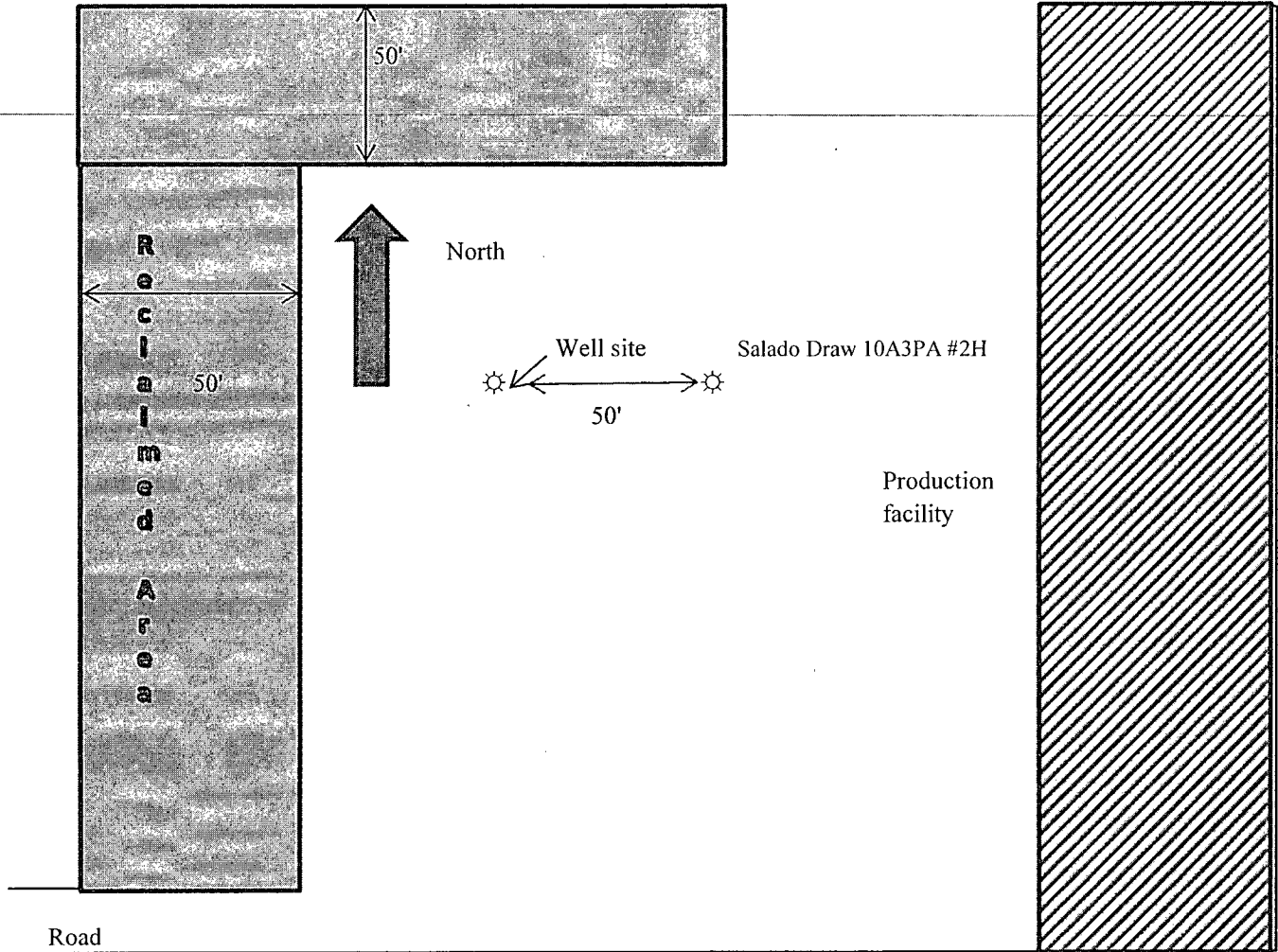


Exhibit 6

Mewbourne Oil Company
Salado Draw 10 A1PA Fed #1H
185' FSL & 380' FEL
Sec. 10 T26S R33E
Lea County, NM

MEWBOURNE OIL COMPANY
 P O BOX 7698
 TYLER TX 75711 7698

No. 229205

(903)561-2900

INVOICE DATE	INVOICE NUMBER	DESCRIPTION	VOUCHER	AMOUNT
12/17/14	FILING.FEE-12/17/14B	APD APPLICATION FILING FEE FOR SALADO DRAW 10 A1AP FED #1H 185'FNL & 380'FEL, SECTION 10-T26S-R33E, LEA CO., NM	1412229205	6500.00
BUREAU OF LAND MANAGEMENT			TOTAL	6,500.00

THIS CHECK IS VOID WITHOUT A BLUE AND GREEN BACKGROUND AND AN ARTIFICIAL WATERMARK ON THE BACK. HOLD AT AN ANGLE TO VIEW.

Frost National Bank
 San Antonio, Texas

MEWBOURNE OIL COMPANY
 P O BOX 7698
 TYLER TX 75711 7698

No. 229205

DATE: 12/17/14

PAY THIS AMOUNT: *****6,500.00

*****6,500 DOLLARS AND *****0 CENTS.

PAY TO THE ORDER OF: BUREAU OF LAND MANAGEMENT
 620 EAST GREENE STREET
 CARLSBAD, NM 88220

J. Joe Buckley

BORDER CONTAINS MICROPRINTING

⑈ 229205⑈ ⑆ 114000093⑆ 010511722⑈

Form NM 8140-9
(March 2008)

United States Department of the Interior
Bureau of Land Management
New Mexico State Office

Permian Basin Cultural Resource Mitigation Fund

The company shown below has agreed to contribute funding to the Permian Basin Cultural Resource Fund in lieu of being required to conduct a Class III survey for cultural resources associated with their project. This form verifies that the company has elected to have the Bureau of Land Management (BLM) follow the procedures specified within the Memorandum of Agreement (MOA) concerning improved strategies for managing historic properties within the Permian Basin, New Mexico, for the undertaking rather than the Protocol to meet the agency's Section 106 obligations.

Company Name: Mewbourne Oil Company

Address: PO Box 5270

Hobbs, NM 88241

Project description:

Location & lease road for Salado Draw 10 A1PA Fed #1H

T. 26S, R. 33E, Section 10 NMPM, Lea County, New Mexico

Amount of contribution: \$ 1552⁰⁰

Provisions of the MOA:

A. No new Class III inventories are required of industry within the Project Area for those projects where industry elects to contribute to the mitigation fund.

B. The amount of funds contributed was derived from the rate schedule established within Appendix B of the MOA. The amount of the funding contribution acknowledged on this form reflects those rates.

C. The BLM will utilize the funding to carry out a program of mitigation at high-priority sites whose study is needed to answer key questions identified within the Regional Research Design.

D. Donating to the fund is voluntary. Industry acknowledges that it is aware it has the right to pay for Class III survey rather than contributing to the mitigation fund, and that it must avoid or fund data recovery at those sites already recorded that are eligible for nomination to the National Register or whose eligibility is unknown and that any such payments are independent of the mitigation funds established by this MOA.

E. Previously recorded archeological sites determined eligible for nomination to the National Register or whose eligibility remains undetermined must be avoided or mitigated.

F. If any skeletal remains that might be human or funerary objects are discovered by any activities, the land-use applicant will cease activities in the area of discovery, protect the remains, and notify the BLM within 24 hours. The BLM will determine the appropriate treatment of the remains in consultation with culturally affiliated Indian Tribe(s) and lineal descendents. Applicants will be required to pay for treatment of the cultural items independent and outside of the mitigation fund.

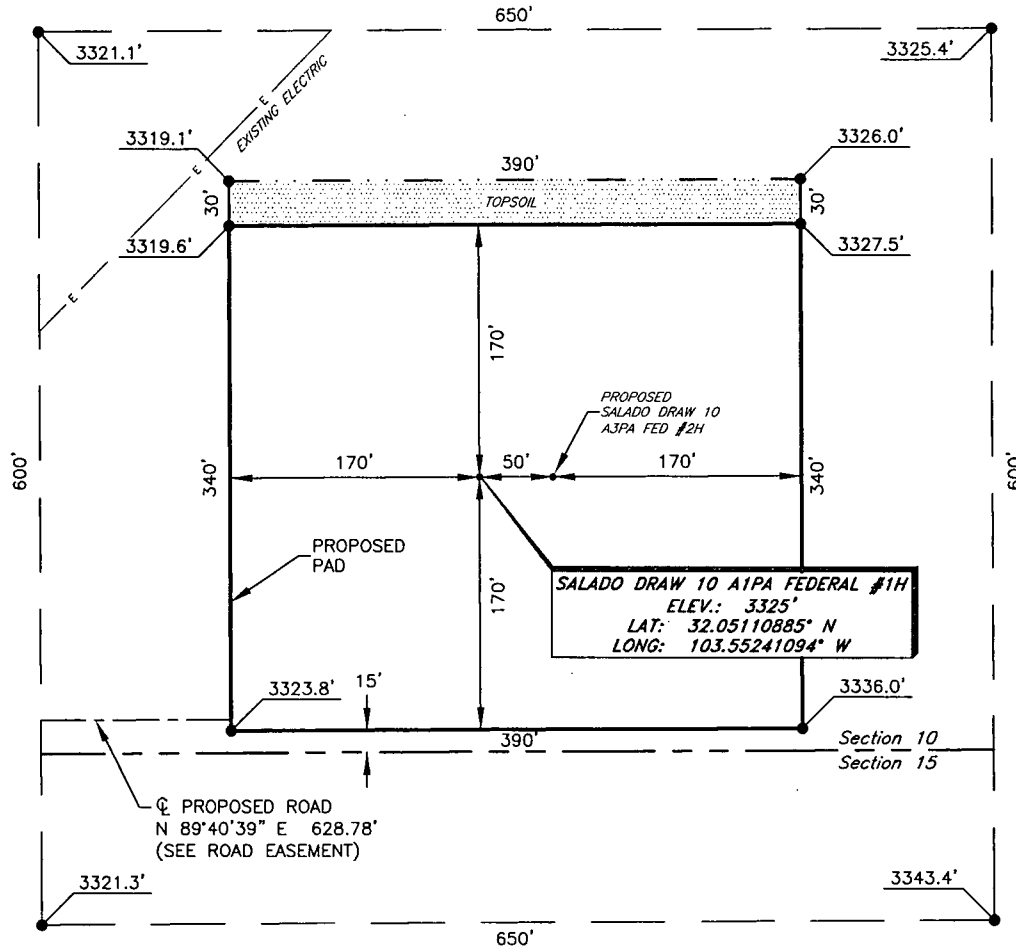

Company-Authorized Officer

4-8-15
Date

BLM-Authorized Officer

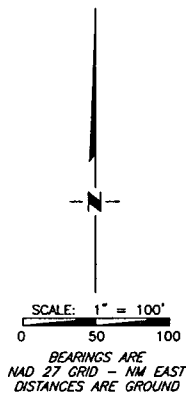
Date

MEWBOURNE OIL COMPANY
SALADO DRAW 10 A1PA FEDERAL #1H
(185' FSL & 380' FEL)
SECTION 10, T26S, R33E
N. M. P. M., LEA CO., NEW MEXICO



DIRECTIONS TO LOCATION

From the intersection of CR-1 (Orla Rd.) and CR-2 (Battle Axe Rd.)
 Go East on CR-2 approx. 10.5 miles to a lease road on the right;
 Turn right and go South approx. 256 feet thru fence to lease road on left;
 Turn left and go East approx. 0.4 miles to proposed road;
 Go East approx. 0.3 miles following proposed road to this location.



Firm No.: TX 10193838 NM 4655451

Copyright 2014 - All Rights Reserved

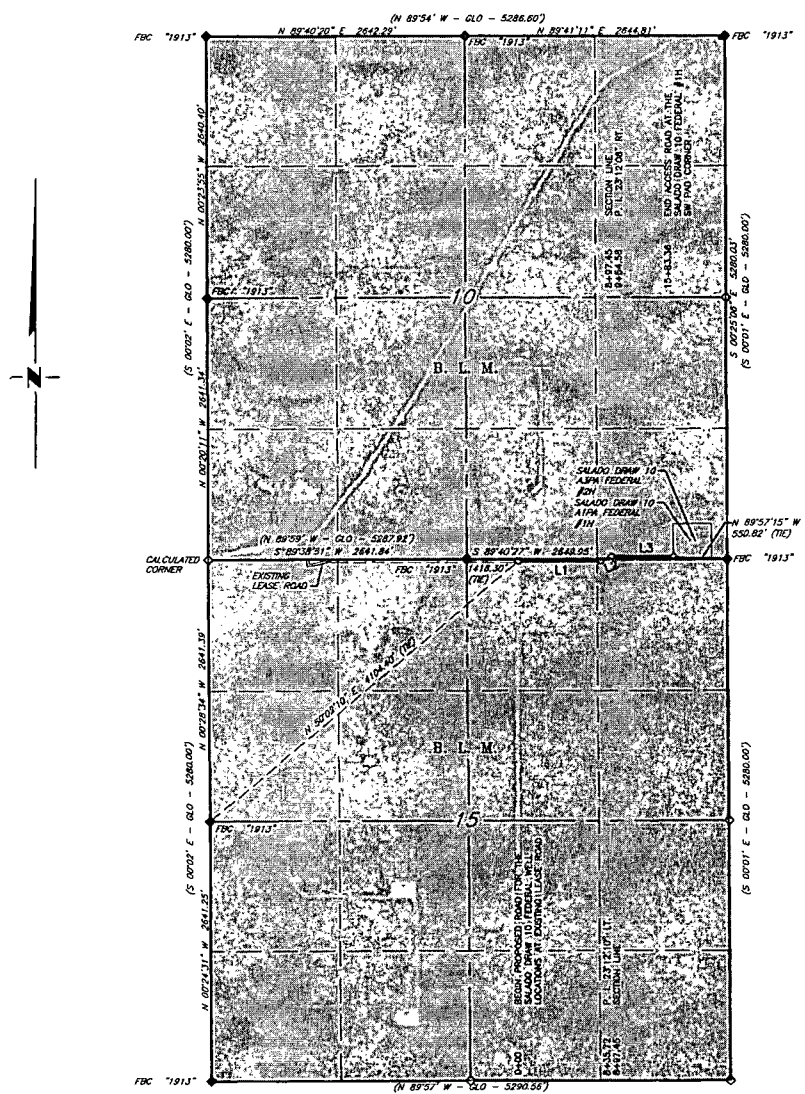
NO.	REVISION	DATE
JOB NO.: LS140584		
DWG. NO.: 140584PAD		

RRC

308 W. BROADWAY ST., HOBBS, NM 88240 (575) 964-8200

SCALE: 1" = 100'
DATE: 1-19-2015
SURVEYED BY: BK/KR
DRAWN BY: CMJ
APPROVED BY: RMH
SHEET : 1 OF 1

MEWBOURNE OIL COMPANY
PROPOSED ACCESS ROAD FOR THE SALADO DRAW 10
A1PA FEDERAL #1H & A3PA FEDERAL #2H WELL LOCATIONS
SECTIONS 10 & 15, T26S, R33E,
N. M. P. M., LEA CO., NEW MEXICO



LINE TABLE		
LINE	BEARING	LENGTH
L1	N 89°40'41" E	835.72'
L2	N 66°28'30" E	118.86'
L3	N 89°40'39" E	628.78'

SCALE: 1" = 1500'
 0 750' 1500'

BEARINGS ARE GRID NAD 27
 NM EAST. --
 DISTANCES ARE HORIZ. GROUND.

- LEGEND**
- () RECORD DATA - GLO
 - ◆ FOUND MONUMENT AS NOTED
 - PROPOSED ACCESS ROAD

Firm No.: TX 10193838 NM 4655451

Copyright 2014 - All Rights Reserved

NO.	REVISION	DATE

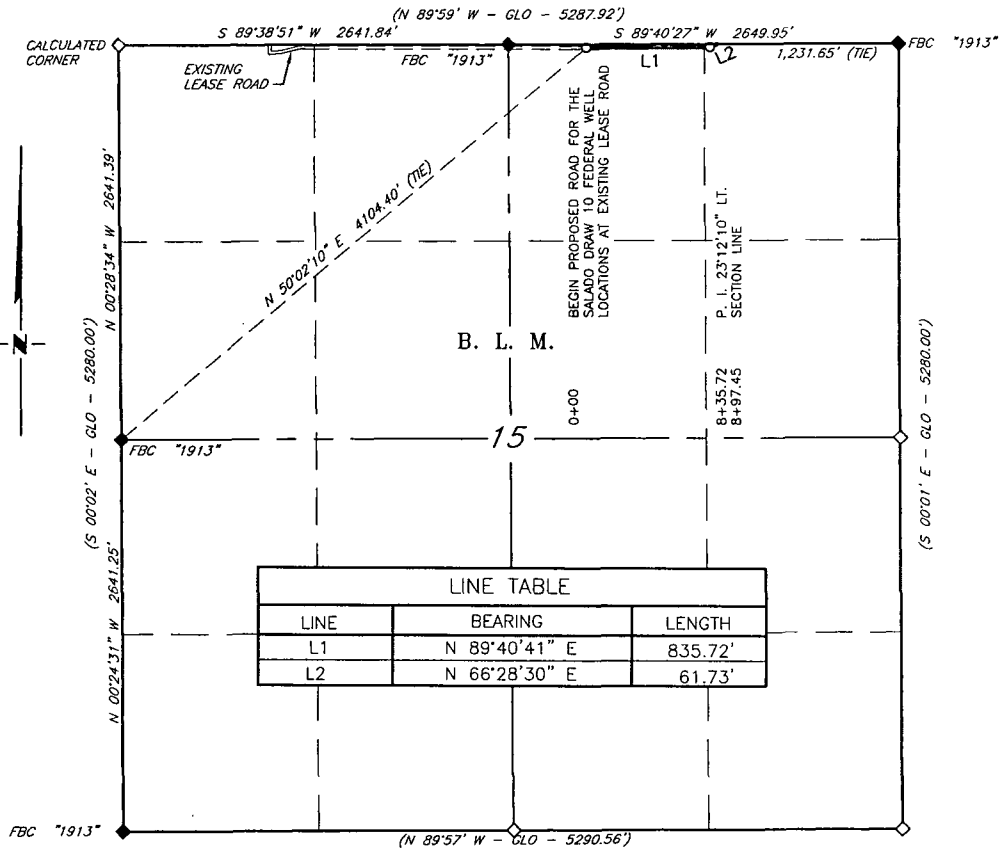
JOB NO.: LS140584
 DWG. NO.: 140584RD1



308 W. BROADWAY ST., HOBBS, NM 88240 (575) 964-8200

SCALE: 1" = 1500'
DATE: 1-15-2015
SURVEYED BY: BK/KR
DRAWN BY: RMH
APPROVED BY: RMH
SHEET : 1 OF 3

MEWBOURNE OIL COMPANY
PROPOSED ACCESS ROAD FOR THE SALADO DRAW 10
A1PA FEDERAL #1H & A3PA FEDERAL #2H WELL LOCATIONS
SECTION 15, T26S, R33E,
N. M. P. M., LEA CO., NEW MEXICO



LINE TABLE		
LINE	BEARING	LENGTH
L1	N 89°40'41\" E	835.72'
L2	N 66°28'30\" E	61.73'

DESCRIPTION

A strip of land 30 feet wide, being 897.45 feet or 54.391 rods in length, lying in Section 15, Township 26 South, Range 33 East, N. M. P. M., Lea County, New Mexico, being 15 feet left and 15 feet right of the following described survey of a centerline across B. L. M. land

BEGINNING at Engr. Sta. 0+00, a point in the Northeast quarter of Section 15, which bears N 50°02'10\" E, 4,104.40 feet from a brass cap, stamped "1913", found for the West quarter corner of Section 15;

Thence N 89°40'41\" E, 835.72 feet, to Engr. Sta. 8+35.72, a P. I. of 23°12'10\" left;

Thence N 66°28'30\" E, 61.73 feet, to Engr. Sta. 8+97.45, a point on the North line of Section 15, which bears S 89°40'27\" W, 1,231.65 feet from a brass cap, stamped "1913", found for the Northeast corner of Section 15.

Said strip of land contains 0.618 acres, more or less and is allocated by forties as follows:

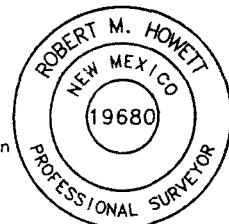
SCALE: 1" = 1000' 0 500' 1000'	NW 1/4 NE 1/4	48.432 Rods	0.550 Acres
	NE 1/4 NE 1/4	5.959 Rods	0.068 Acres

BEARINGS ARE GRID NAD 27
 NM EAST.
 DISTANCES ARE HORIZ. GROUND.

- LEGEND**
- () RECORD DATA - GLO
 - ◆ FOUND MONUMENT AS NOTED
 - PROPOSED ACCESS ROAD

I, R. M. Howett, a N. M. Professional Surveyor, hereby certify that I prepared this plat from an actual survey made on the ground under my direct supervision, said survey and plat meet the Min. Stds. for Land Surveying in the State of N. M. and are true and correct to the best of my knowledge and belief.

Robert M. Howett
 Robert M. Howett NM PS 19680



Firm No.: TX 10193838 NM 4655451

Copyright 2014 - All Rights Reserved

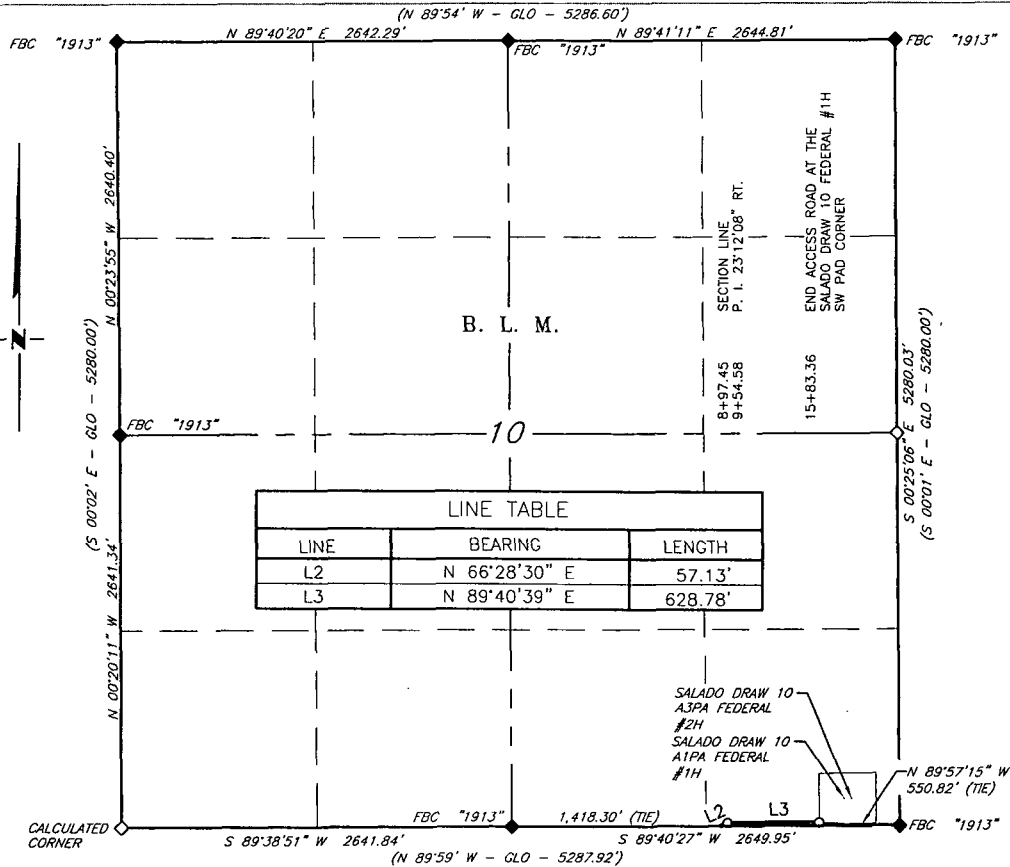
NO.	REVISION	DATE
JOB NO.: LS140584		
DWG. NO.: 140584RD2		



308 W. BROADWAY ST., HOBBS, NM 88240 (575) 964-8200

SCALE: 1" = 1000'
DATE: 1-15-2015
SURVEYED BY: BK/KR
DRAWN BY: RMH
APPROVED BY: RMH
SHEET : 2 OF 3

MEWBOURNE OIL COMPANY
PROPOSED ACCESS ROAD FOR THE SALADO DRAW 10
A1PA FEDERAL #1H & A3PA FEDERAL #2H WELL LOCATIONS
SECTION 10, T26S, R33E,
N. M. P. M., LEA CO., NEW MEXICO



A strip of land 30 feet wide, being 685.91 feet or 41.570 rods in length, lying in Section 10, Township 26 South, Range 33 East, N. M. P. M., Lea County, New Mexico, being 15 feet left and 15 feet right of the following described survey of a centerline across B. L. M. land

BEGINNING at Engr. Sta. 8+97.45, a point on the South line of Section 10, which bears N 89°40'47" E, 1,418.30 feet from a brass cap, stamped "1913", found for the South quarter corner of Section 10;

Thence N 66°28'30" E, 57.13 feet, to Engr. Sta. 9+54.48, a P. I. of 23°12'08" right;

Thence N 89°40'39" E, 628.78 feet, to Engr. Sta. 15+83.36, the End of Survey, a point which bears N 89°57'15" W, 550.82 feet from a brass cap, stamped "1913", found for the Southeast corner of Section 10.

Said strip of land contains 0.618 acres, more or less and is allocated by forties as follows:

SCALE: 1" = 1000'
 0 500' 1000'

SE 1/4 SE 1/4 41.570 Rods 0.472 Acres

BEARINGS ARE GRID NAD 27
 NM EAST
 DISTANCES ARE HORIZ. GROUND.

LEGEND
 () RECORD DATA - GLO
 ◆ FOUND MONUMENT AS NOTED
 — PROPOSED ACCESS ROAD

I, R. M. Howett, a N. M. Professional Surveyor, hereby certify that I prepared this plat from an actual survey made on the ground under my direct supervision, said survey and plat meet the Min. Stds. for Land Surveying in the State of N. M. and are true and correct to the best of my knowledge and belief.

Robert M. Howett
 Robert M. Howett NM PS 19680



Firm No.: TX 10193838 NM 4655451

Copyright 2014 - All Rights Reserved

NO.	REVISION	DATE
JOB NO.: LS140584		
DWG. NO.: 140584RDJ		



308 W. BROADWAY ST., HOBBS, NM 88240 (575) 964-8200

SCALE: 1" = 1000'
DATE: 1-15-2015
SURVEYED BY: BK/KR
DRAWN BY: RMH
APPROVED BY: RMH
SHEET : 3 OF 3

MEWBOURNE OIL COMPANY
 P O BOX 7698
 TYLER TX 75711 7698

No. 229222

(903)561-2900

INVOICE DATE	INVOICE NUMBER	DESCRIPTION	VOUCHER	AMOUNT
12/17/14	BLM.MOA-12/17/14.D	BLM MOA (MEMORANDUM OF AGREEMENT) FOR THE SALADO DRAW 10 A1AP FED #1H	1412229222	1552.00
DEPT OF INTERIOR-BLM			TOTAL	1,552.00

THIS CHECK IS VOID WITHOUT A BLUE AND GREEN BACKGROUND AND AN ARTIFICIAL WATERMARK ON THE BACK. HOLD AT AN ANGLE TO VIEW.

Frost National Bank
 San Antonio, Texas

MEWBOURNE OIL COMPANY
 P.O. BOX 7698
 TYLER TX 75711 7698

No. 229222

30 9/1140 01

*****1,552 DOLLARS AND *****0 CENTS

DATE	PAY THIS AMOUNT
12/17/14	*****1,552.00

PAY TO THE
 ORDER OF DEPT OF INTERIOR-BLM
 620 EAST GREENE STREET
 CARLSBAD NM 88220

Joe Buckley

BORDER CONTAINS MICROPRINTING

⑈ 229222⑈ ⑆ 114000093⑆ 010511722⑈