

District I  
1625 N. French Dr., Hobbs, NM 88240  
Phone: (575) 393-6161 Fax: (575) 393-0720  
District II  
811 S. First St., Artesia, NM 88210  
Phone: (575) 748-1283 Fax: (575) 748-9720  
District III  
1000 Rio Brazos Road, Aztec, NM 87410  
Phone: (505) 334-6178 Fax: (505) 334-6170  
District IV  
1220 S. St. Francis Dr., Santa Fe, NM 87505  
Phone: (505) 476-3460 Fax: (505) 476-3462

State of New Mexico  
Energy, Minerals & Natural Resources Department  
OIL CONSERVATION DIVISION  
1220 South St. Francis Dr.  
Santa Fe, NM 87505

Form C-102  
Revised August 1, 2011  
Submit one copy to appropriate  
District Office

☐ AMENDED REPORT

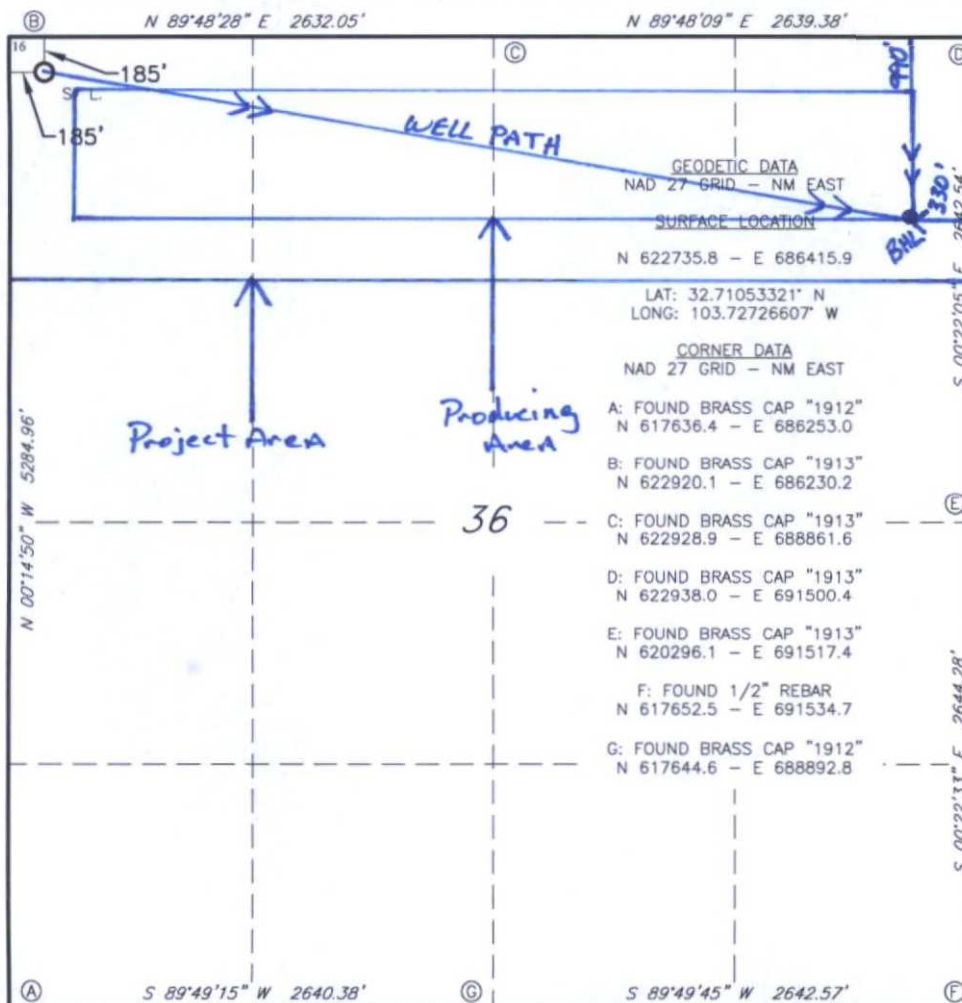
OCT 14 2015

RECEIVED

WELL LOCATION AND ACREAGE DEDICATION PLAT

1 API Number <b>30-025-42695</b>		2 Pool Code <b>50510</b>		3 Pool Name <b>QUERECHO PLAINS LOWER BONE SPRING</b>	
4 Property Code		5 Property Name <b>LONE WOLF 36 B2DM STATE COM</b>			
6 Well Number <b>1H</b>		7 Elevation <b>3734'</b>			
7 GRID NO. <b>14744</b>		8 Operator Name <b>MEWBOURNE OIL COMPANY</b>			
10 Surface Location					
UL or lot no. <b>D</b>	Section <b>36</b>	Township <b>18S</b>	Range <b>32E</b>	Lot Idn	Feet from the <b>185</b>
		North/South line <b>NORTH</b>		Feet From the <b>185</b>	East/West line <b>WEST</b>
		County <b>LEA</b>			
11 Bottom Hole Location If Different From Surface					
UL or lot no. <b>A</b>	Section <b>36</b>	Township <b>18S</b>	Range <b>32E</b>	Lot Idn	Feet from the <b>990</b>
		North/South line <b>NORTH</b>		Feet from the <b>330</b>	East/West line <b>EAST</b>
		County <b>LEA</b>			
12 Dedicated Acres <b>160</b>		13 Joint or Infill		14 Consolidation Code	
				15 Order No.	

No allowable will be assigned to this completion until all interest have been consolidated or a non-standard unit has been approved by the division.



17 OPERATOR CERTIFICATION	
I hereby certify that the information contained herein is true and complete to the best of my knowledge and belief, and that this organization either owns a working interest or unleased mineral interest in the land including the proposed bottom hole location or has a right to drill this well at this location pursuant to a contract with an owner of such a mineral or working interest, or to a voluntary pooling agreement or a compulsory pooling order heretofore entered by the division.	
Signature <b>Bradley Bishop</b>	Date <b>10-12-15</b>
Printed Name <b>BRADLEY BISHOP</b>	
E-mail Address	
18 SURVEYOR CERTIFICATION	
I hereby certify that the well location shown on this plat was plotted from field notes of actual surveys made by me or under my supervision, and that the same is true and correct to the best of my belief.	
9-24-2015	
Date of Survey	
Signature and Seal of Professional Surveyor	
19680	
Certificate Number	

RRC - Firm No.: TX 10193838 NM 4655451 - Job No.: LS1509529

OCT 15 2015