

DISTRICT I
1625 N French Dr., Hobbs, NM 88240
Phone (575) 393-6161 Fax (575) 393-0720

DISTRICT II
811 S First St., Artesia, NM 88210
Phone (575) 748-1283 Fax (575) 748-9720

DISTRICT III
1000 Rio Brazos Road, Aztec, NM 87410
Phone (505) 334-6178 Fax (505) 334-6170

DISTRICT IV
1220 S St. Francis Dr., Santa Fe, NM 87505
Phone (505) 476-3460 Fax (505) 476-3462

State of New Mexico
Energy, Minerals & Natural Resources Department
OIL CONSERVATION DIVISION
1220 South St. Francis Dr.
Santa Fe, New Mexico 87505

HOBBS OCD

JUN 28 2013

Form C-102
Revised August 1, 2011
Submit one copy to appropriate
District Office

AMENDED REPORT

WELL LOCATION AND ACREAGE DEDICATION PLAT

API Number 30-025-41154		Pool Code 62180	Pool Name VACUUM; GRIFFINBURG SAN ANDRES
Property Code 29923	Operator Name CHEVRON USA INC.		Well Number 256
OGRID No 4323			Elevation 4005'

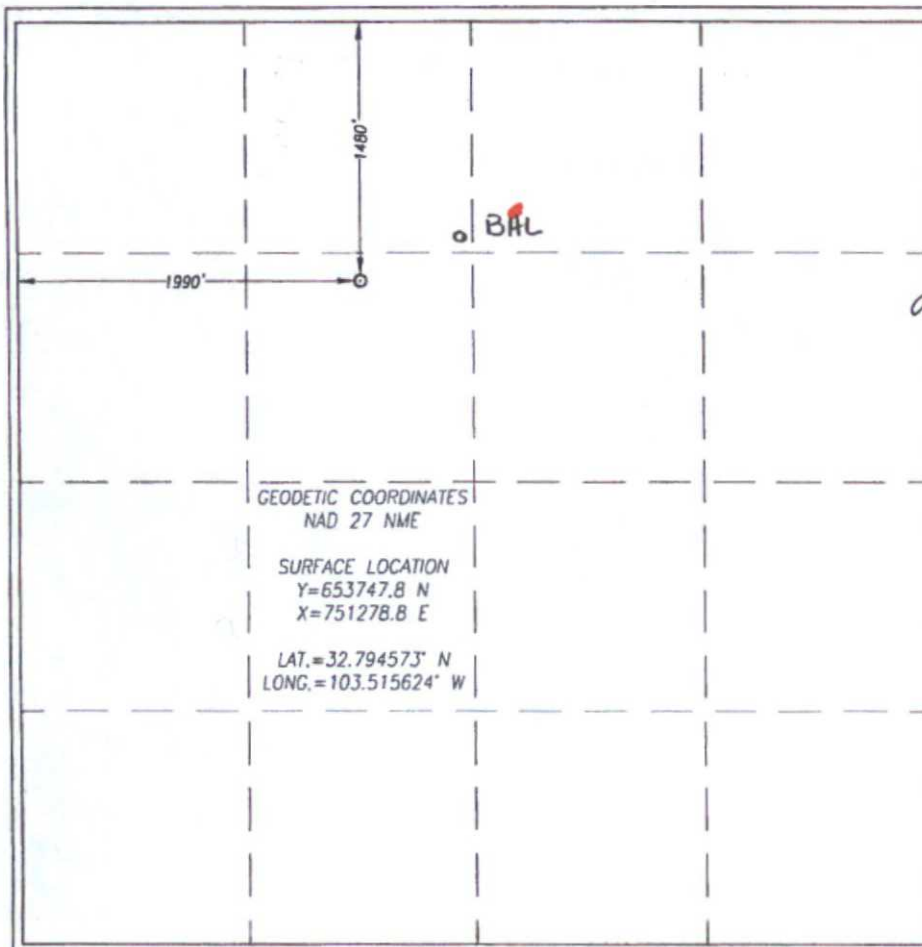
Surface Location

UL or lot No.	Section	Township	Range	Lot Idn	Feet from the	North/South line	Feet from the	East/West line	County
F	36	17-S	34-E		1480	NORTH	1990	WEST	LEA

Bottom Hole Location If Different From Surface

UL or lot No.	Section	Township	Range	Lot Idn	Feet from the	North/South line	Feet from the	East/West line	County
EB	36	17S	34E		1251	NORTH	3680	WEST	LEA
Dedicated Acres 40	Joint or Infill	Consolidation Code	Order No WFX-916						

NO ALLOWABLE WILL BE ASSIGNED TO THIS COMPLETION UNTIL ALL INTERESTS HAVE BEEN CONSOLIDATED OR A NON-STANDARD UNIT HAS BEEN APPROVED BY THE DIVISION



OPERATOR CERTIFICATION

I hereby certify that the information herein is true and complete to the best of my knowledge and belief, and that this organization either owns a working interest or unleased mineral interest in the land including the proposed bottom hole location or has a right to drill this well at this location pursuant to a contract with an owner of such mineral or working interest, or to a voluntary pooling agreement or a compulsory pooling order heretofore entered by the division.

Denise Pinkerton 6-25-13
Signature Date
Denise Pinkerton
Printed Name
Lea Keide@chevron.com
E-mail Address

SURVEYOR CERTIFICATION

I hereby certify that the well location shown on this plat was plotted from field notes of actual surveys made by me or under my supervision, and that the same is true and correct to the best of my belief.

APRIL 16, 2013

Date of Survey
Signature of Professional Surveyor

GARY EIDSON
NEW MEXICO
12641
RECEIVED
PROFESSIONAL SURVEYOR
4/30/13
Certification Number: Gary Eidson 12641
JWSC WO 13 11 0350

NOV 18 2015