

# COPY

HOBBS OCO

NOV 30 2015

RECEIVED

DISTRICT I  
1625 N. French Dr. Hobbs, NM 88240  
Phone: (575) 393-6161 Fax: (575) 393-0720

DISTRICT II  
811 S. First St. Artesia, NM 88210  
Phone: (575) 748-1283 Fax: (575) 748-9720

DISTRICT III  
1000 Rio Brazos Road, Aztec, NM 87410  
Phone: (505) 534-6178 Fax: (505) 334-6170

DISTRICT IV  
1220 S. St. Francis Dr., Santa Fe, NM 87505  
Phone: (505) 476-3460 Fax: (505) 476-3462

State of New Mexico  
Energy, Minerals & Natural Resources Department  
OIL CONSERVATION DIVISION  
1220 South St. Francis Dr.  
Santa Fe, New Mexico 87505

Form C-102  
Revised August 1, 2011  
Submit one copy to appropriate  
District Office

DAMENDED REPORT

## WELL LOCATION AND ACREAGE DEDICATION PLAT

API Number <b>30-025-42964</b>	Pool Code <b>97903</b>	Pool Name <b>WC-025 G-08 5253235G; LWR BS</b>
Property Code <b>305301</b>	Property Name <b>MESA 8105 JV-P</b>	Well Number <b>27H</b>
OGRID No <b>260297</b>	Operator Name <b>BTA OIL PRODUCERS, LLC</b>	Elevation <b>3334'</b>

### Surface Location

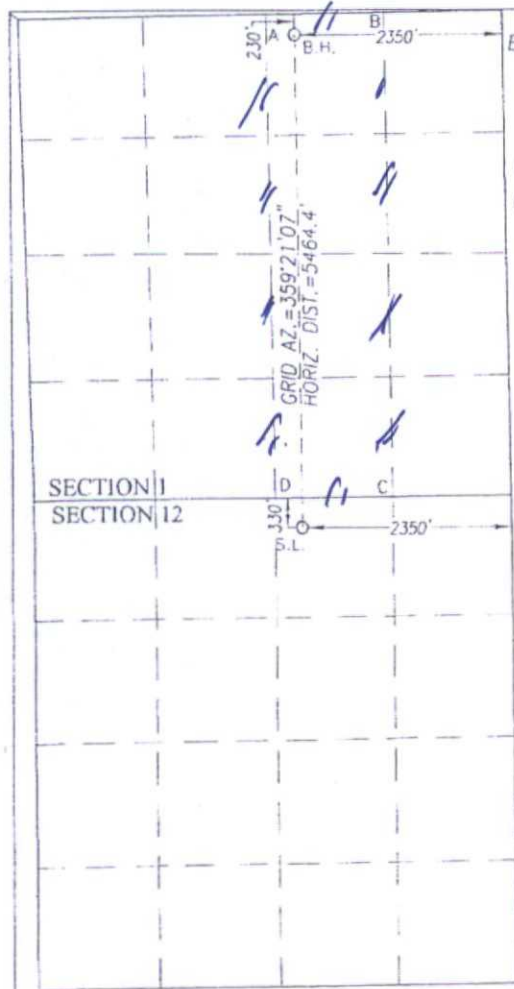
UL or lot No.	Section	Township	Range	Lot Idn	Feet from the	North/South line	Feet from the	East/West line	County
B	12	26-S	32-E		330	NORTH	2350	EAST	LEA

### Bottom Hole Location If Different From Surface

UL or lot No.	Section	Township	Range	Lot Idn	Feet from the	North/South line	Feet from the	East/West line	County
B	1	26-S	32-E		230	NORTH	2350	EAST	LEA

Dedicated Acres <b>160</b>	Joint or Infill	Consolidation Code	Order No.
-------------------------------	-----------------	--------------------	-----------

NO ALLOWABLE WILL BE ASSIGNED TO THIS COMPLETION UNTIL ALL INTERESTS HAVE BEEN CONSOLIDATED OR A NON-STANDARD UNIT HAS BEEN APPROVED BY THE DIVISION



NAD 27 NME NAD 83 NME  
BOTTOM HOLE LOCATION BOTTOM HOLE LOCATION  
Y = 393188.9 N Y = 3393246.4 N  
X = 718771.9 E X = 759958.5 E

LAT. = 32.079023° N LAT. = 32.079148° N  
LONG. = 103.627007° W LONG. = 103.627478° W

GEODETIC COORDINATES GEODETIC COORDINATES  
NAD 27 NME NAD 83 NME

SURFACE LOCATION SURFACE LOCATION  
Y = 387726.0 N Y = 387783.4 N  
X = 718833.4 E X = 760020.2 E

LAT. = 32.064005° N LAT. = 32.064130° N  
LONG. = 103.626924° W LONG. = 103.627394° W

### CORNER COORDINATES TABLE NAD 83 NME

A - Y = 393472.5 N, X = 759634.4 E  
B - Y = 393488.4 N, X = 760970.0 E  
C - Y = 388123.3 N, X = 761039.1 E  
D - Y = 388110.4 N, X = 759710.5 E

### CORNER COORDINATES TABLE NAD 27 NME

A - Y = 393415.0 N, X = 718447.8 E  
B - Y = 393430.8 N, X = 719783.4 E  
C - Y = 388065.9 N, X = 719852.3 E  
D - Y = 388053.0 N, X = 718523.7 E

### OPERATOR CERTIFICATION

I hereby certify that the information herein is true and complete to the best of my knowledge and belief, and that this organization either owns a working interest or unleased mineral interest in the land including the proposed bottom hole location or has a right to drill this well at this location pursuant to a contract with an owner of such mineral or working interest, or to a voluntary pooling agreement or a compulsory pooling order heretofore entered by the division.

*Kayla McConnell* 04/15/2015  
Signature Date

Kayla McConnell

Printed Name

kmcconnell@btaoil.com  
E-mail Address

### SURVEYOR CERTIFICATION

I hereby certify that the well location shown on this plat was plotted from field notes of actual surveys made by me or under my supervision, and that the same is true and correct to the best of my belief.

SEPTEMBER 4, 2014

Date of Survey

Signature & Seal of Professional Surveyor

*Ronald J. Eidson* 11/24/2014  
Certificate Number 12641  
Ronald J. Eidson 3239

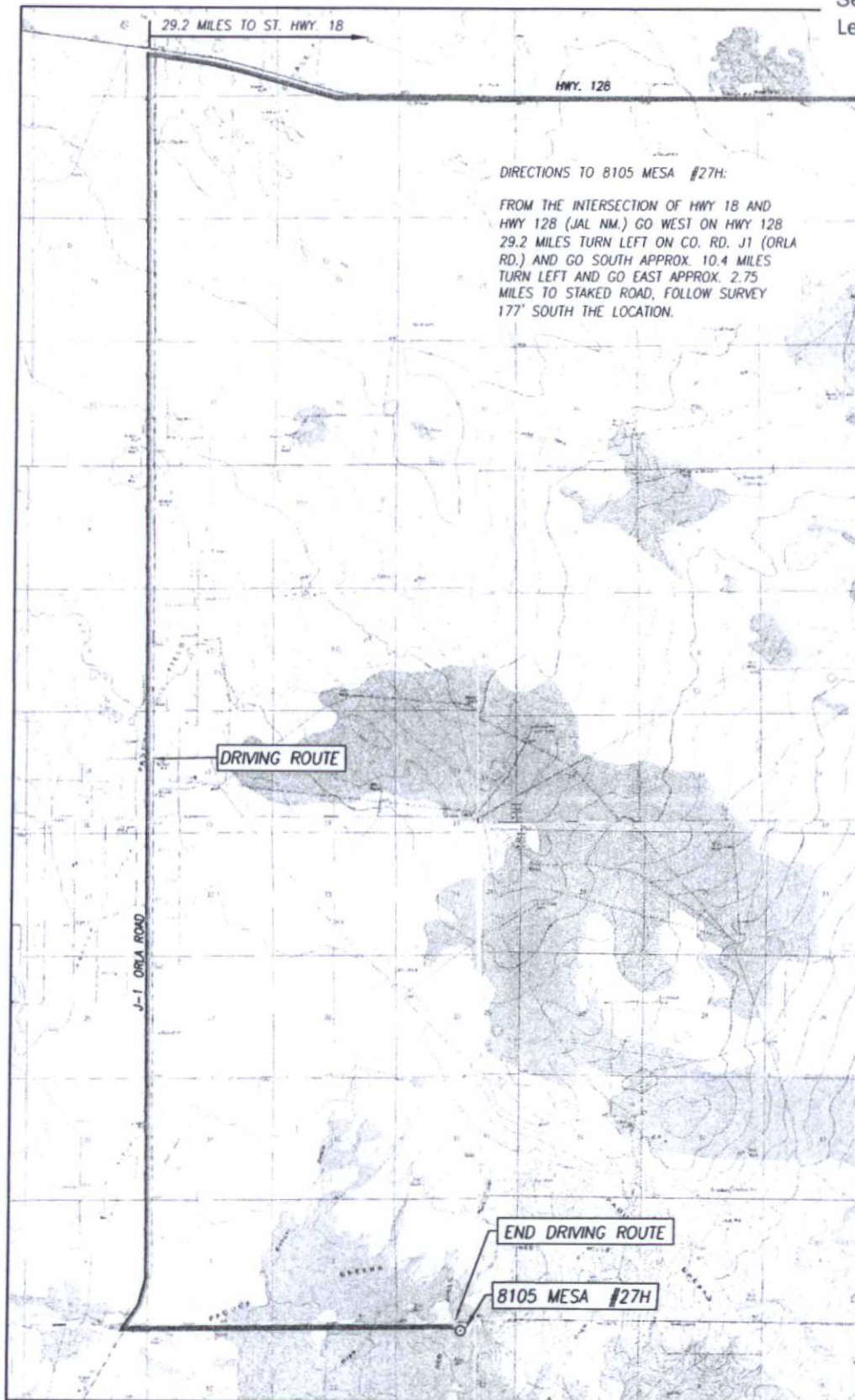
I.S.L. R.E.L. W.O. 34/10036 JWSC W.O. 14 12 1096

DEC 01 2015

# COPY

## LOCATION VERIFICATION MAP

Attachment to APD  
BTA Oil Producers, LLC  
Mesa 8105 JV-P #27H  
Sec 12, T26S, R32E  
Lea County, NM



HOBBS OGD

NOV 30 2015

RECEIVED

SEC. 12 TWP. 26-S RGE. 32-E  
COUNTY LEA STATE NEW MEXICO  
DESCRIPTION 330' FNL & 2350' FEL  
ELEVATION 3334'  
OPERATOR BTA OIL PRODUCERS, LLC  
LEASE 8105 MESA  
U.S.G.S. TOPOGRAPHIC MAP  
PADUCA BREAKS NW, N.M. SURVEY N.M.P.M.

SCALE: 1" = 5280'

PADUCA BREAKS WEST, N.M. - 10'  
PADUCA BREAKS EAST, N.M. - 10'  
CONTOUR INTERVAL: PADUCA BREAKS NW, N.M. - 10'

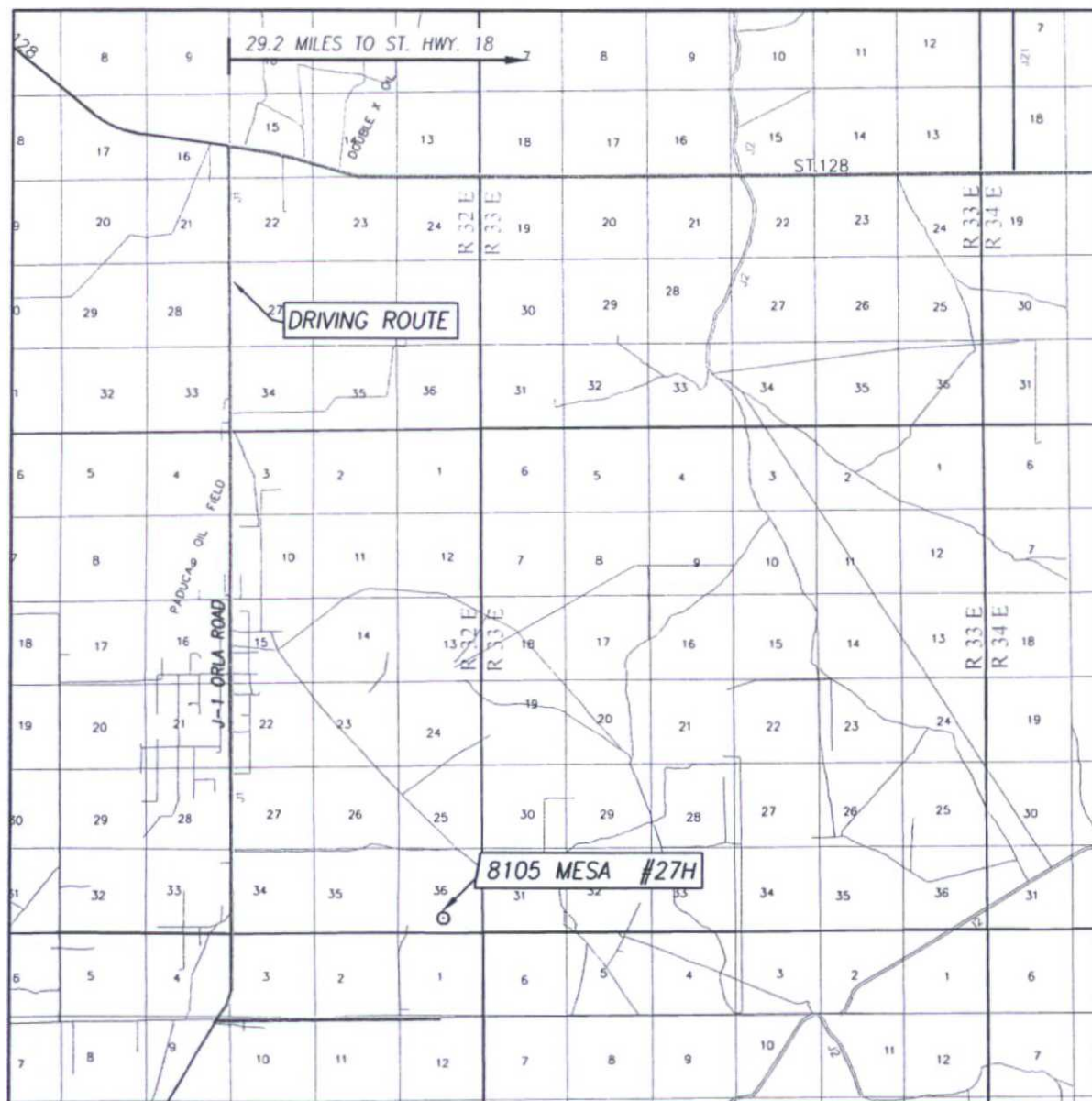
PROVIDING SURVEYING SERVICES  
SINCE 1946  
**JOHN WEST SURVEYING COMPANY**  
412 N. DAL PASO HOBBS, N.M. 88240  
(575) 393-3117 www.jwsc.biz  
TBPLS# 10021000



# COPY

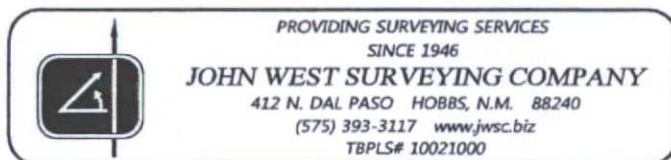
## VICINITY MAP

Attachment to APD  
BTA Oil Producers, LLC  
Mesa 8105 JV-P #27H  
Sec 12, T26S, R32E  
Lea County, NM



SCALE: 1" = 2 MILES  
DRIVING ROUTE: SEE LOCATION VERIFICATION MAP

SEC. 12 TWP. 26-S RGE. 32-E  
SURVEY N.M.P.M.  
COUNTY LEA STATE NEW MEXICO  
DESCRIPTION 330' FNL & 2350' FEL  
ELEVATION 3334'  
OPERATOR BTA OIL PRODUCERS, LLC  
LEASE 8105 MESA



COPY

BTA Oil Producers, LLC  
Mesa 8105 JV-P #27H  
1 Mile Radius Map  
Sec 12, T26S, R32E  
Lea County, NM



**BTA OIL PRODUCERS, LLC**

**8105 JV-P Mesa #27H - 1 Mile Radius Map**

SHL: 330°FNL & 2350°FEL Sec. 12, T26S, R32E

BHL: 230°FNL & 2350°FEL Sec. 1, T26S, R32E

Lea Co. New Mexico

**WELL SYMBOLS**

- Proposed Location
- Location Only
- Drilling Well
- Drilled, Waiting on Completion
- Oil Well
- Gas Well
- Dry Hole
- Dry Hole With Oil & Gas Show
- Pilot Hole

**REMARKS**

8105 JV-P Mesa #27H Bottom Hole Location  
Highlighted in Yellow

Only Wells Inside a Mile Radius of Surface &  
Bottom Hole Locations Labeled

By: JHB







# 8105 Mesa Plan of Development Proposed Flowlines

Approximate Distance  
Well to Central Tank Battery Per Section

Sec. 11 CTB  
4H ~ 1,215'  
5H/21H ~ 200'  
6H ~ 1,170'  
7H ~ 1,440'  
8H/22H ~ 3,909'  
CTB to SWD #1W ~ 1,308'

Sec. 12 CTB  
9H ~ 1,960'  
10H/15H ~ 1,910'  
23H/26H ~ 2,600'  
24H/27H ~ 200'  
25H/19H ~ 2,909'  
CTB to SWD #1W ~ 8,080'

Sec. 1 CTB  
11H/16H ~ 740'  
12H/17H ~ 1,529'  
13H/18H ~ 2,272'  
14H/28H ~ 2,927'  
TB to SWD #1W ~ 7,475'

## LEGEND:

- Well Pad
- Central Tank Battery (CTB)
- Frac Pond
- Flowline
- Water Pipeline

COPY

BTA Oil Producers, LLC  
Mesa 8105 JV-P #27H  
Proposed Flowlines Map  
Sec 12, T26S, R32E  
Lea County, NM

1

SWD #1W

11

12

#2H

#20H

#4H

#6H

#8H

#9H

#11H

#12H

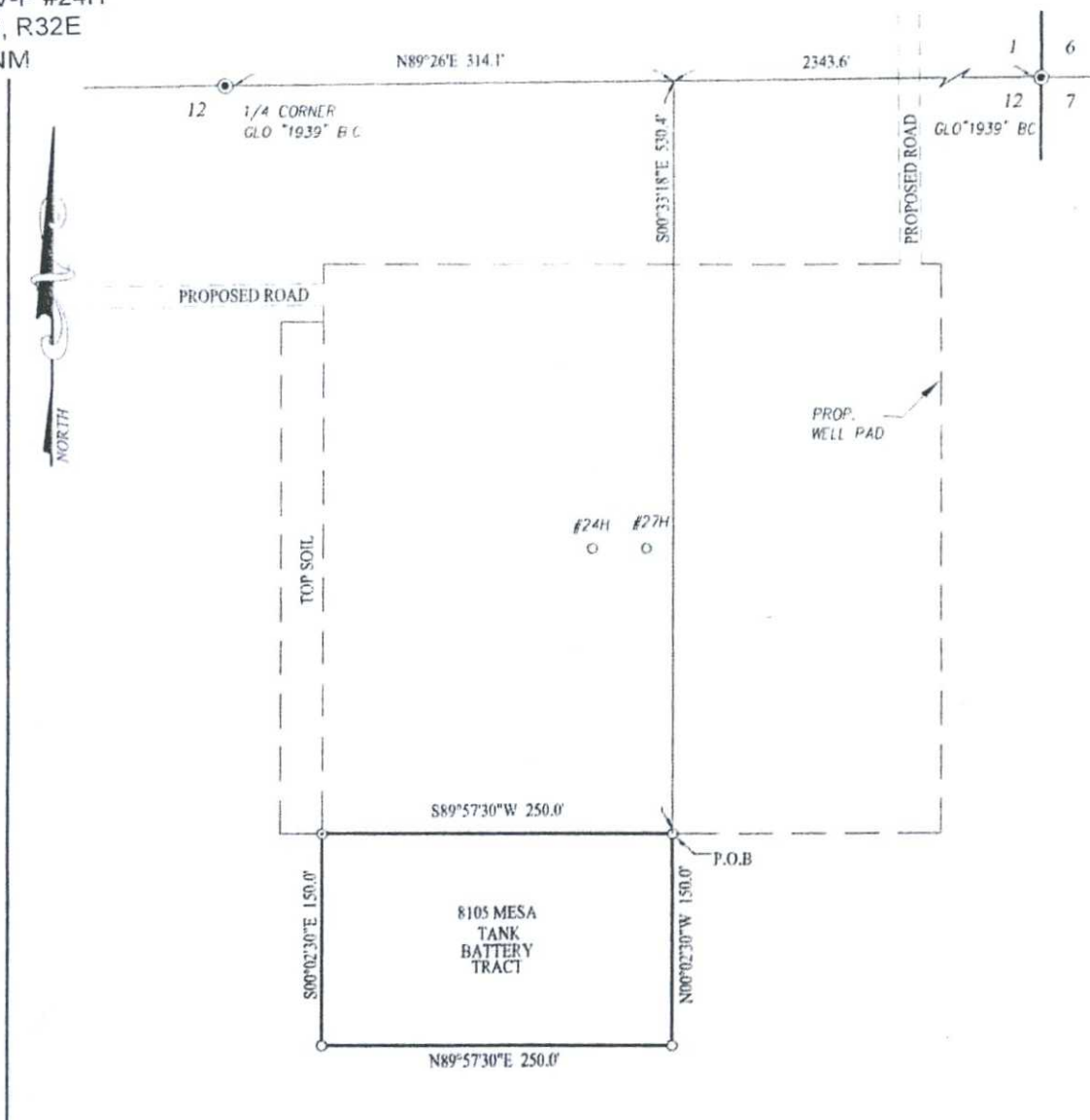
#14H

#25H

#26H  
#3H  
#15H  
#16H  
#17H  
#18H  
#27H  
#28H  
#19H

Attachment to APD  
BTA Oil Producers, LLC  
Mesa 8105 JV-P #24H  
Sec 12, T26S, R32E  
Lea County, NM

**COPY**



**DESCRIPTION:**

A TRACT SITUATED IN THE NORTHEAST QUARTER OF SECTION 12, TOWNSHIP 26 SOUTH, RANGE 32 EAST, N.M.P.M., LEA COUNTY, NEW MEXICO AND BEING MORE PARTICULARLY DESCRIBED AS FOLLOWS:

BEGINNING AT THE NORTHEAST CORNER WHICH LIES N89°26'42\"/>

**NOTE**

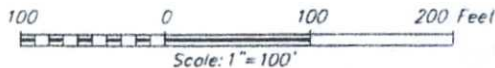
BEARINGS SHOWN HEREON ARE MERCATOR GRID AND CONFORM TO THE NEW MEXICO COORDINATE SYSTEM "NEW MEXICO EAST ZONE" NORTH AMERICAN DATUM 1983. DISTANCES ARE SURFACE VALUES

I, RONALD J. EIDSON, NEW MEXICO PROFESSIONAL SURVEYOR No. 3239, DO HEREBY CERTIFY THAT THIS SURVEY WAS THE ACTUAL SURVEY ON THE GROUND UPON WHICH IT IS BASED AND WAS PERFORMED BY ME OR UNDER MY DIRECT SUPERVISION. I AM RESPONSIBLE FOR THIS SURVEY; THAT THIS SURVEY MEETS THE MINIMUM STANDARDS FOR SURVEYING IN NEW MEXICO, AND THAT IT IS TRUE AND CORRECT TO THE BEST OF MY KNOWLEDGE AND BELIEF.

RONALD J. EIDSON

DATE: \_\_\_\_\_

**LEGEND**  
● DENOTES FOUND CORNER AS NOTED



**BTA OIL PRODUCERS, LLC**

SURVEY FOR A TANK BATTERY TRACT  
SITUATED IN THE NE/4 OF SECTION 12,  
TOWNSHIP 26 SOUTH, RANGE 32 EAST, N.M.P.M.  
LEA COUNTY, NEW MEXICO

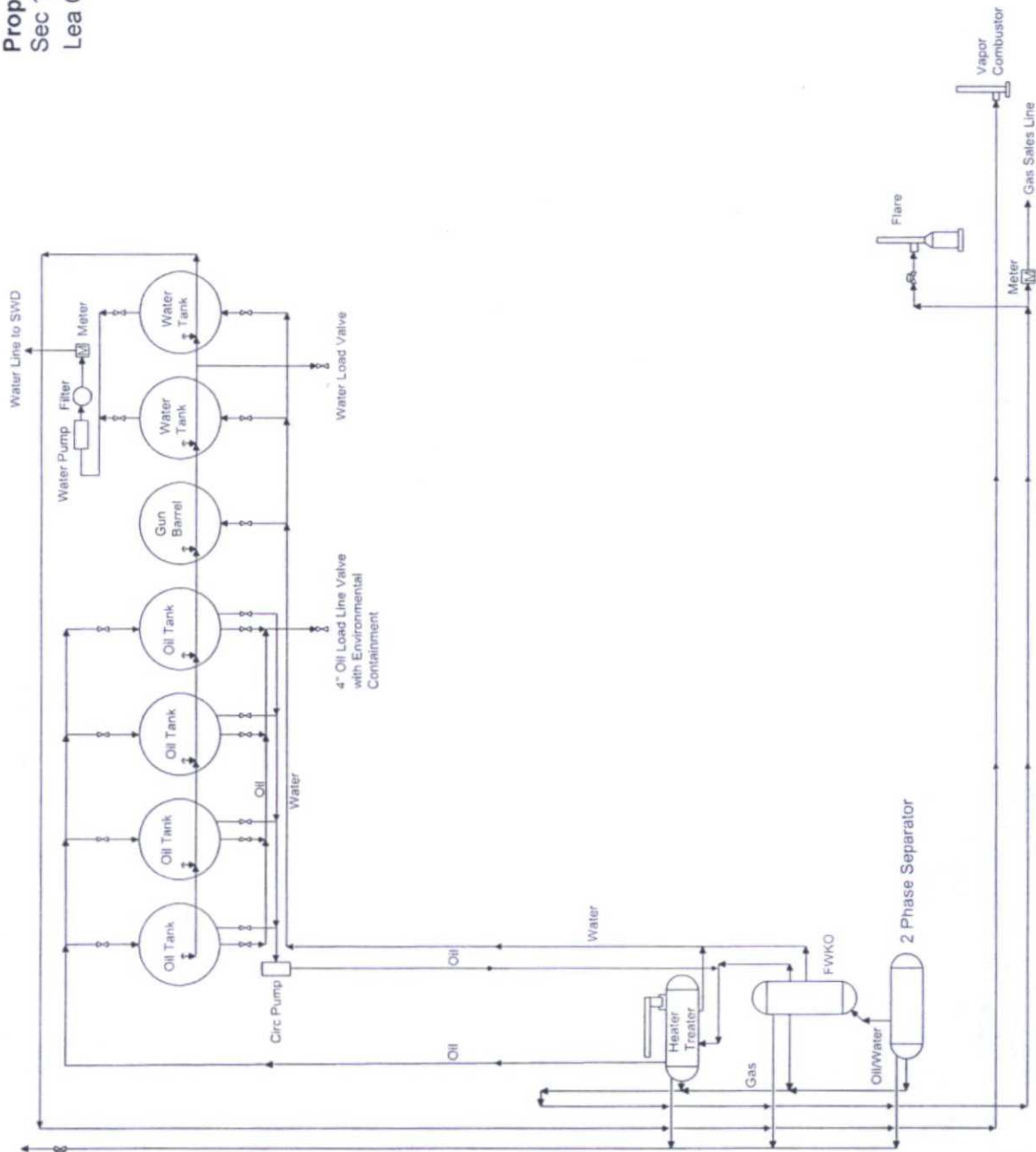


PROVIDING SURVEYING SERVICES  
SINCE 1946  
**JOHN WEST SURVEYING COMPANY**  
412 N. DAL PASO HOBBS, N.M. 88240  
(575) 393-3117 www.jwsc.biz  
TRPLS# 10021000

Survey Date: 10/20/14	CAD Date: 11/19/14	Drawn By: LSL
W.O. No.: 14111114	Rev:	Rel. W.O.:
		Sheet 1 of 1

COPY

BTA Oil Producers, LLC  
Mesa 8105 JV-P #27H  
Proposed Central Tank Battery  
Sec 12, T26S, R32E  
Lea County, NM



NOT TO SCALE

BTA Oil Producers, LLC

Mesa 8105 JV-P

-Proposed-

Central Tank Battery

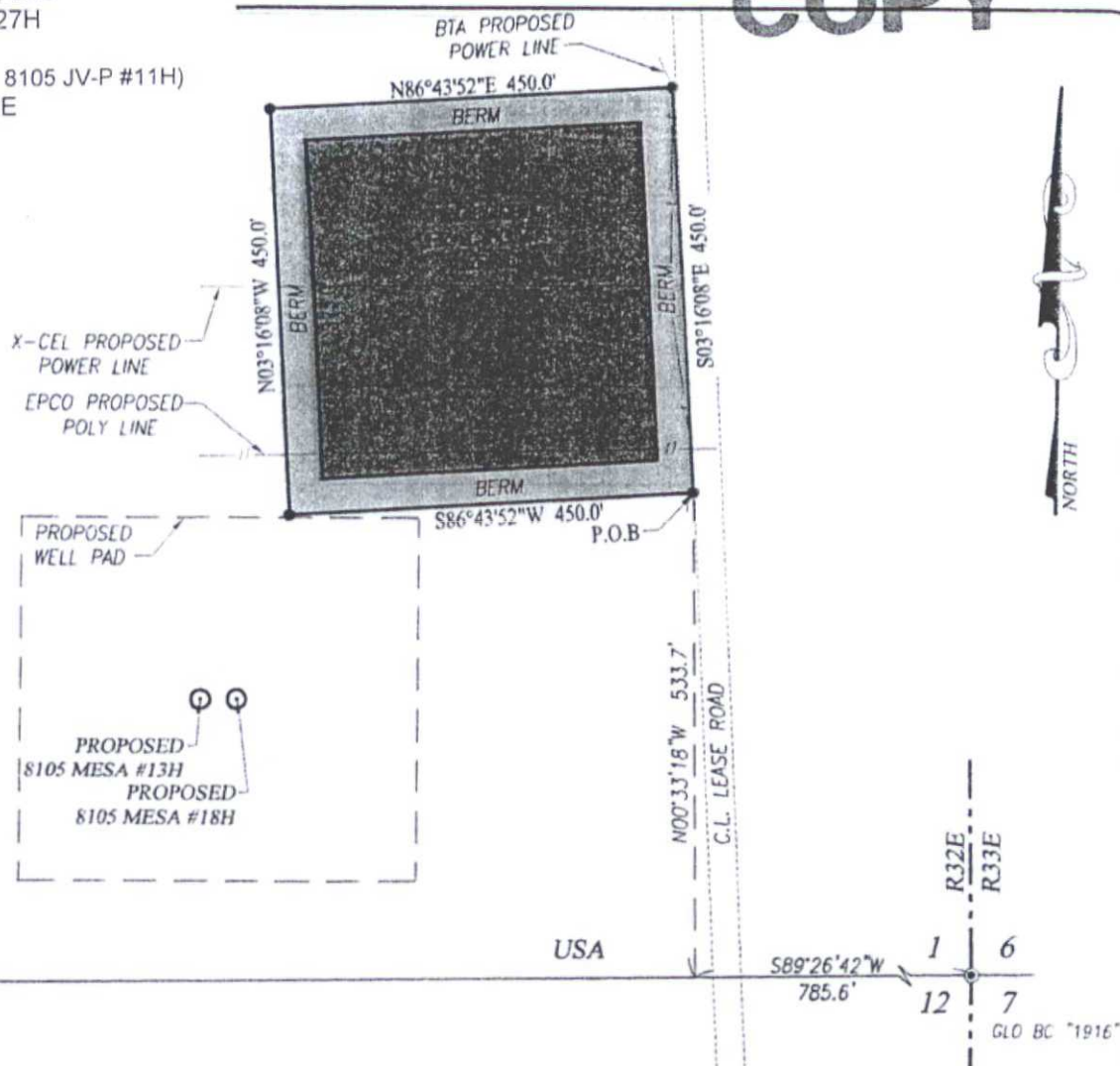
Section 12, T26S-R32E

Lea County, NM



BTA Oil Producers, LLC  
Mesa 8105 JV-P #27H  
**Frac Pond**  
(permitted with Mesa 8105 JV-P #11H)  
Sec 12, T26S, R32E  
Lea County, NM

**COPY**



**LEGEND**

- DENOTES SET CORNER AS NOTED
- ⊙ DENOTES FOUND CORNER AS NOTED

**NOTE**

BEARINGS SHOWN HEREON ARE MERCATOR GRID AND CONFORM TO THE NEW MEXICO COORDINATE SYSTEM "NEW MEXICO EAST ZONE" NORTH AMERICAN DATUM 1983. DISTANCES ARE SURFACE VALUES.

I, RONALD J. EIDSON, NEW MEXICO PROFESSIONAL SURVEYOR No. 3239, DO HEREBY CERTIFY THAT THIS SURVEY PLAT AND THE ACTUAL SURVEY ON THE GROUND UPON WHICH IT IS BASED WERE PERFORMED BY ME OR UNDER MY DIRECT SUPERVISION, THAT I AM RESPONSIBLE FOR THIS SURVEY; THAT THIS SURVEY MEETS THE MINIMUM STANDARDS FOR SURVEYING IN NEW MEXICO; AND THAT IT IS TRUE AND CORRECT TO THE BEST OF MY KNOWLEDGE AND BELIEF.

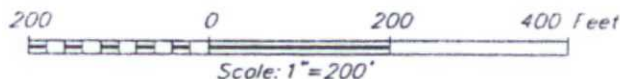
RONALD J. EIDSON

DATE: 01/23/2015

**DESCRIPTION:**

A TRACT FOR A FRAC POND SITUATED IN THE SOUTHEAST QUARTER OF SECTION 1, TOWNSHIP 26 SOUTH, RANGE 32 EAST, N.M.P.M., LEA COUNTY, NEW MEXICO AND BEING MORE PARTICULARLY DESCRIBED AS FOLLOWS:

BEGINNING AT THE SOUTHEAST CORNER OF THIS TRACT WHICH LIES S89°26'42"W 785.6 FEET AND N00°33'18"W 533.7 FEET FROM THE SOUTHEAST CORNER; THEN S86°43'52"W 450.0 FEET; THEN N03°16'08"W 450.0 FEET; THEN N86°43'52"E 450.0 FEET; THEN S03°16'08"E 450.0 FEET TO THE POINT OF BEGINNING AND CONTAINING 4.65 ACRES MORE OR LESS.



**BTA OIL PRODUCERS, LLC**

SURVEY FOR A FRAC POND TRACT  
SITUATED IN THE SE/4 OF SECTION 1,  
TOWNSHIP 26 SOUTH, RANGE 32 EAST, N.M.P.M.  
LEA COUNTY, NEW MEXICO



PROVIDING SURVEYING SERVICES  
SINCE 1946  
**JOHN WEST SURVEYING COMPANY**  
412 N. DAL PASO HOBBS, N.M. 88240  
(575) 393-3117 www.jwsc.biz  
TBPLS# 10021000

Survey Date: 1/16/15	CAD Date: 1/22/15	Drawn By: ACK
W.O. No.: 15110029	Rev: .	Rel. W.O.: 14111113
		Sheet 1 of 1