

COPY

DISTRICT I
1625 N. French Dr., Hobbs, NM 88240
Phone (505) 393-6161 Fax (505) 393-0720
DISTRICT II
811 S. First St., Artesia, NM 88210
Phone (505) 748-1283 Fax (505) 748-9720
DISTRICT III
1000 Rio Brazos Road, Aztec, NM 87410
Phone (505) 374-6178 Fax (505) 334-6170
DISTRICT IV
1220 S. St. Francis Dr., Santa Fe, NM 87505
Phone (505) 476-3460 Fax (505) 476-3462

State of New Mexico
Energy, Minerals & Natural Resources Department
OIL CONSERVATION DIVISION
1220 South St. Francis Dr.
Santa Fe, New Mexico 87505

HOBBS OGD

NOV 30 2015

RECEIVED

Form C-102
Revised August 1, 2011
Submit one copy to appropriate
District Office

AMENDED REPORT

WELL LOCATION AND ACREAGE DEDICATION PLAT

API Number 30-025-42965	Pool Code 97903	Pool Name WC-025 G-08 5253235G, LWR BS
Property Code 305301	Property Name MESA 8105 JV-P	Well Number 28H
OGRID No 260297	Operator Name BTA OIL PRODUCERS, LLC	Elevation 3289'

Surface Location

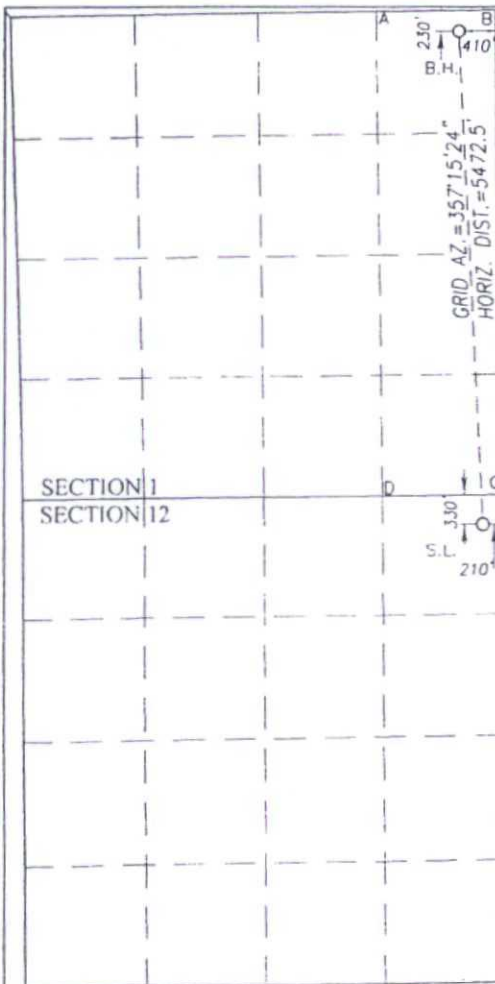
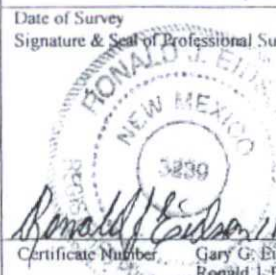
UL or lot No.	Section	Township	Range	Lot Idn	Feet from the	North/South line	Feet from the	East/West line	County
A	12	26-S	32-E		330	NORTH	210	EAST	LEA

Bottom Hole Location If Different From Surface

UL or lot No.	Section	Township	Range	Lot Idn	Feet from the	North/South line	Feet from the	East/West line	County
A	1	26-S	32-E		230	NORTH	410	EAST	LEA

Dedicated Acres	Joint or Infill	Consolidation Code	Order No.
160			

NO ALLOWABLE WILL BE ASSIGNED TO THIS COMPLETION UNTIL ALL INTERESTS HAVE BEEN CONSOLIDATED OR A NON-STANDARD UNIT HAS BEEN APPROVED BY THE DIVISION

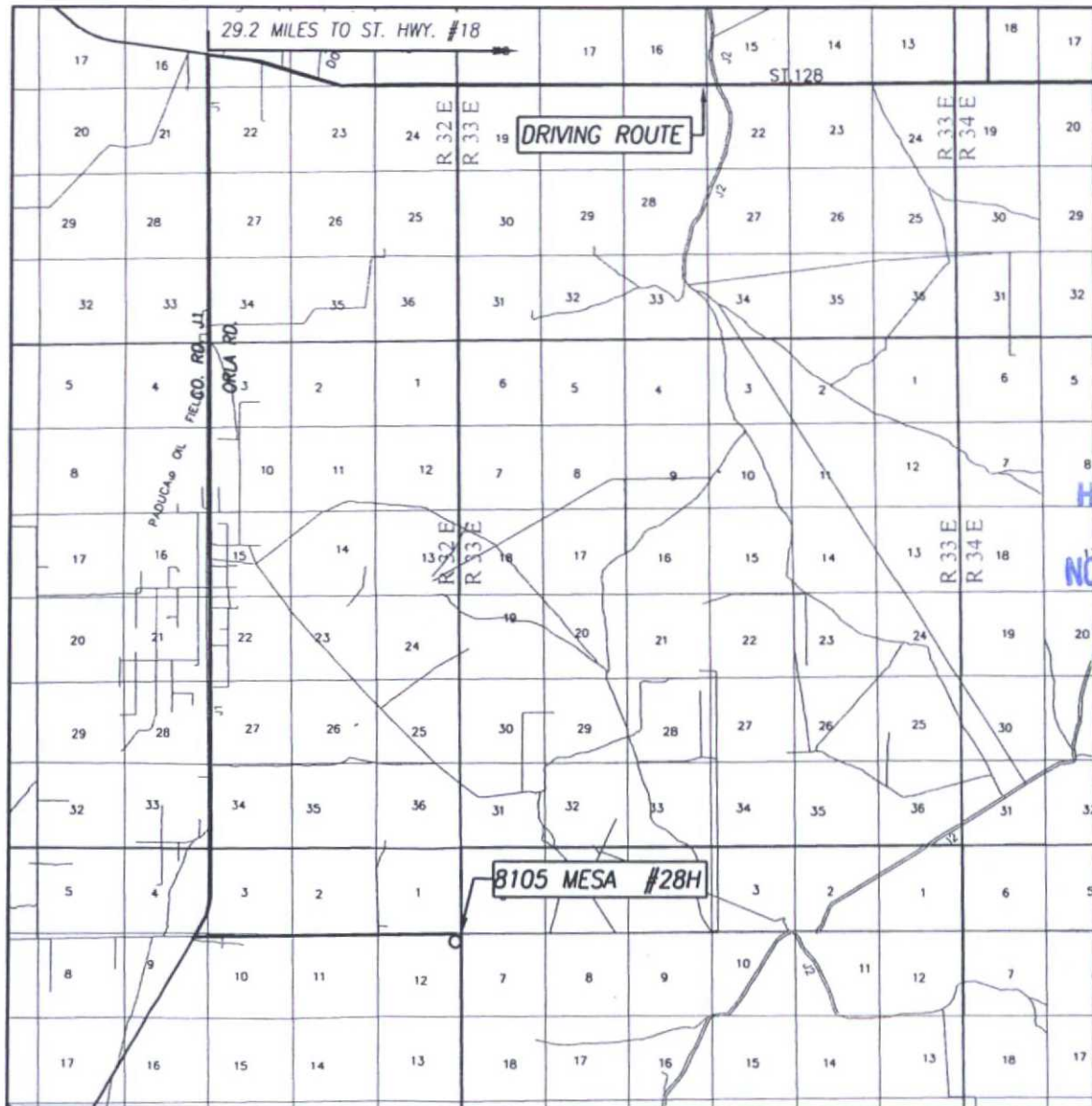
	BOTTOM HOLE LOCATION NAD 27 NME Y = 393211.9 N X = 720711.3 E LAT. = 32.079051° N LONG. = 103.620745° W GEODETIC COORDINATES NAD 27 NME SURFACE LOCATION Y = 387746.8 N X = 720973.0 E LAT. = 32.064024° N LONG. = 103.620017° W	BOTTOM HOLE LOCATION NAD 83 NME Y = 393269.4 N X = 761898.0 E LAT. = 32.079176° N LONG. = 103.621216° W GEODETIC COORDINATES NAD 83 NME SURFACE LOCATION Y = 387804.2 N X = 762159.8 E LAT. = 32.064149° N LONG. = 103.620487° W	CORNER COORDINATES TABLE NAD 27 NME A - Y = 393425.6 N, X = 719783.5 E B - Y = 393446.7 N, X = 721119.0 E C - Y = 388078.7 N, X = 721180.8 E D - Y = 388065.8 N, X = 719852.2 E
	CORNER COORDINATES TABLE NAD 83 NME A - Y = 393483.1 N, X = 760970.1 E B - Y = 393504.2 N, X = 762305.6 E C - Y = 388136.1 N, X = 762367.6 E D - Y = 388123.2 N, X = 761039.1 E		
	OPERATOR CERTIFICATION I hereby certify that the information herein is true and complete to the best of my knowledge and belief, and that this organization either owns a working interest or unleased mineral interest in the land including the proposed bottom hole location or has a right to drill this well at this location pursuant to a contract with an owner of such mineral or working interest, or to a voluntary pooling agreement or a compulsory pooling order heretofore entered by the division. Signature: <u>Kayla McConnell</u> Date: <u>4/22/2015</u> Printed Name: <u>Kayla McConnell</u> E-mail Address: <u>kmcconnell@btaoil.com</u>		
	SURVEYOR CERTIFICATION I hereby certify that the well location shown on this plat was plotted from field notes of actual surveys made by me or under my supervision, and that the same is true and correct to the best of my belief. OCTOBER 20, 2014 Date of Survey Signature & Seal of Professional Surveyor:  Certificate Number: <u>3839</u> Gary G. Eidson 12641 Ronald J. Eidson 3239 LSL FWSC W.O. 14.11.1098		

DEC 01 2015

COPY

VICINITY MAP

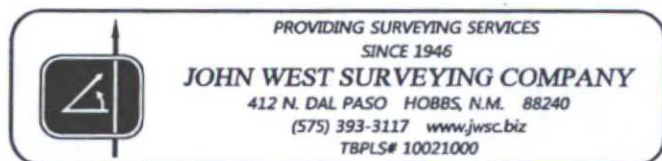
Attachment to APD
BTA Oil Producers, LLC
Mesa 8105 JV-P #28H
Sec 12, T26S, R32E
Lea County, NM



HOBBS OCD
NOV 30 2015
RECEIVED

SCALE: 1" = 2 MILES
DRIVING ROUTE: SEE LOCATION VERIFICATION MAP

SEC. 12 TWP. 26-S RGE. 32-E
SURVEY N.M.P.M.
COUNTY LEA STATE NEW MEXICO
DESCRIPTION 330' FNL & 210' FEL
ELEVATION 3289'
OPERATOR BTA OIL PRODUCERS, LLC
LEASE 8105 MESA



PROVIDING SURVEYING SERVICES
SINCE 1946

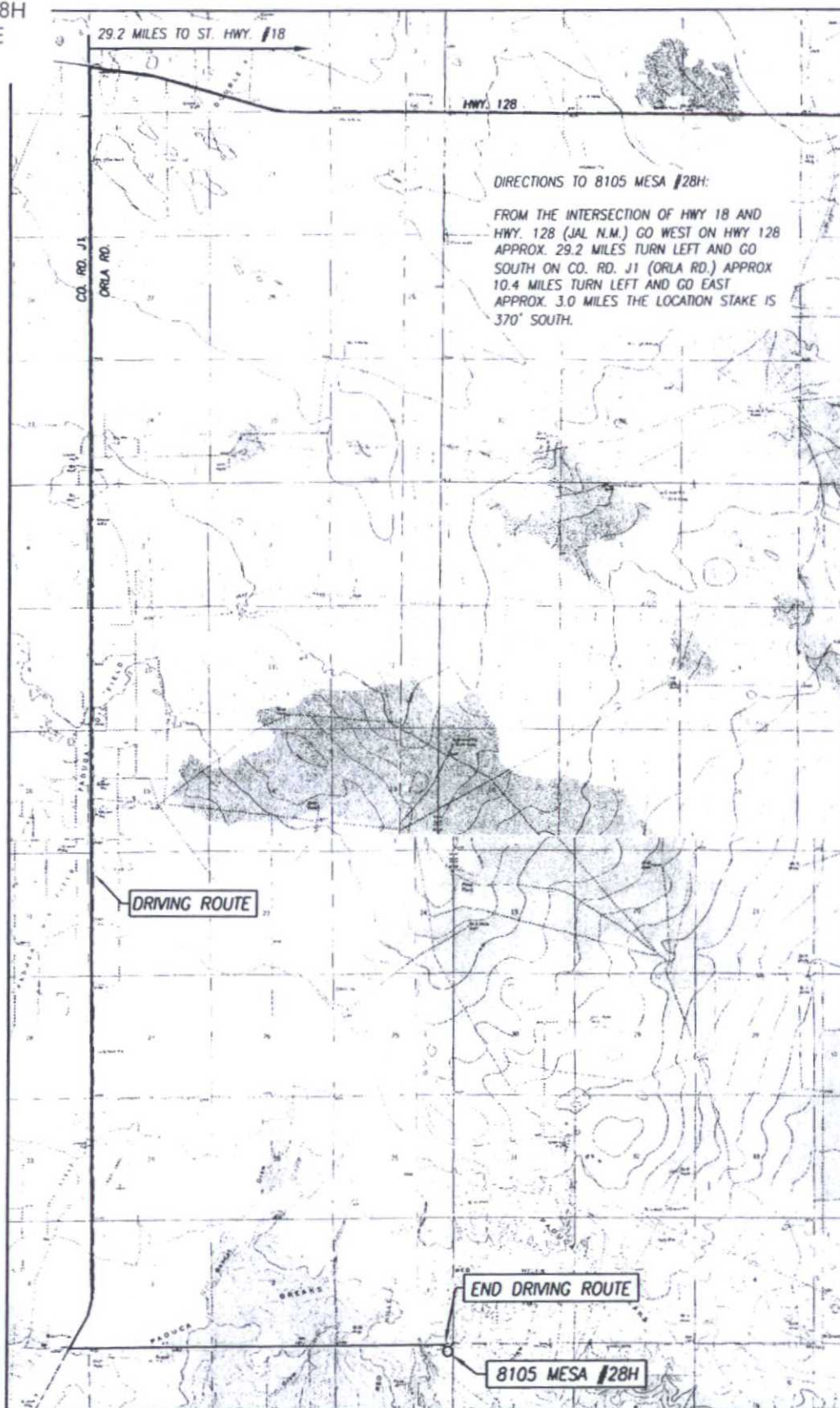
JOHN WEST SURVEYING COMPANY

412 N. DAL PASO HOBBS, N.M. 88240
(575) 393-3117 www.jwsc.biz
TBPLS# 10021000

Attachment to APD
BTA Oil Producers, LLC
Mesa 8105 JV-P #28H
Sec 12, T26S, R32E
Lea County, NM

LOCATION VERIFICATION MAP

COPY



SEC. 12 TWP. 26-S RGE. 32-E
COUNTY LEA STATE NEW MEXICO
DESCRIPTION 330' FNL & 210' FEL
ELEVATION 3289'
OPERATOR BTA OIL PRODUCERS, LLC
LEASE 8105 MESA
U.S.G.S. TOPOGRAPHIC MAP
PADUCA BREAKS WEST, N.M. SURVEY N.M.P.M.

SCALE: 1" = 5280'

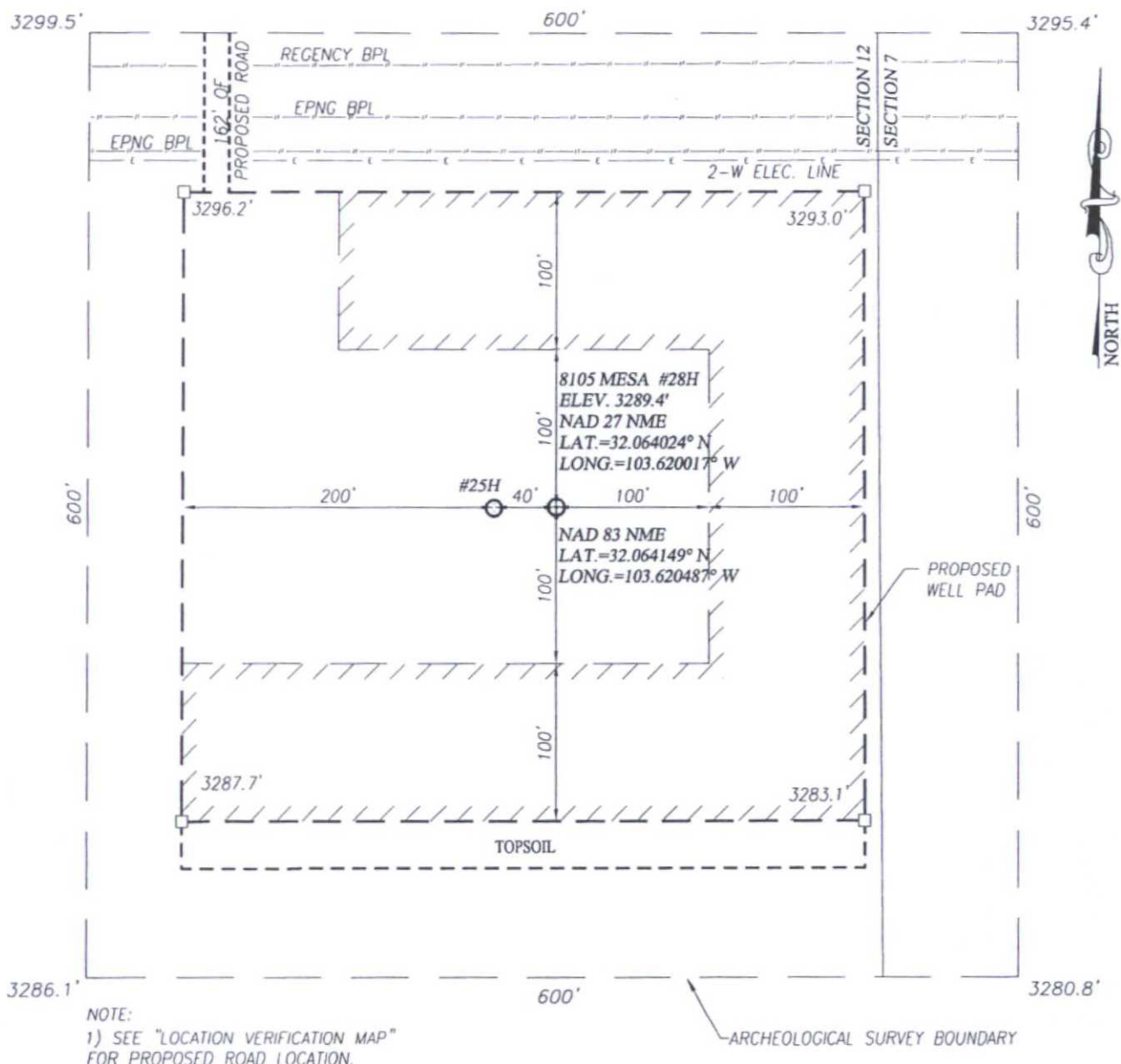
CONTOUR INTERVAL:
PADUCA BREAKS WEST, N.M. - 10'
PADUCA BREAKS NW, N.M. - 10'



PROVIDING SURVEYING SERVICES
SINCE 1946
JOHN WEST SURVEYING COMPANY
412 N. DAL PASO HOBBS, N.M. 88240
(575) 393-3117 www.jwsc.biz
TBPLS# 10021000

COPY

BTA Oil Producers, LLC
Mesa 8105 JV-P #28H
Location Plat - Interim Reclamation
Sec 12, T26S, R32E
Lea County, NM

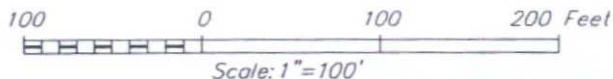


NOTE:
1) SEE "LOCATION VERIFICATION MAP"
FOR PROPOSED ROAD LOCATION.

////// DENOTES AREA TO BE RECLAIMED

DIRECTIONS TO 8105 MESA #28H:

FROM THE INTERSECTION OF HWY 18 AND HWY. 128 (JAL N.M.)
GO WEST ON HWY 128 APPROX. 29.2 MILES TURN LEFT AND
GO SOUTH ON CO. RD. J1 (ORLA RD.) APPROX 10.4 MILES
TURN LEFT AND GO EAST APPROX. 3.0 MILES THE LOCATION
STAKE IS 370' SOUTH.



BTA OIL PRODUCERS, LLC

8105 MESA #28H WELL
LOCATED 330 FEET FROM THE NORTH LINE
AND 210 FEET FROM THE EAST LINE OF SECTION 12,
TOWNSHIP 26 SOUTH, RANGE 32 EAST, N.M.P.M.,
LEA COUNTY, NEW MEXICO

PROVIDING SURVEYING SERVICES
SINCE 1946

JOHN WEST SURVEYING COMPANY

412 N. DAL PASO HOBBS, N.M. 88240
(575) 393-3117 www.jwsc.biz
TBPLS# 10021000

Survey Date: 10/20/14

CAD Date: 11/18/14

Drawn By: LSL

W.O. No.: 14111098

Rev.:

Rel. W.O.:

Sheet 1 of 1



© DRAFT

COPY

BTA Oil Producers, LLC
 Mesa 8105 JV-P #28H
1 Mile Radius Map
 Sec 12, T26S, R32E
 Lea County, NM



BTA Oil Producers, LLC

8105 JV-P Mesa #28H - 1 Mile Radius Map

SHL: 330°FNL & 210°FEL Sec.12, T26S, R32E

BHL: 230°FNL & 410°FEL Sec.1, T26S, R32E

Lea, County, New Mexico

WELL SYMBOLS

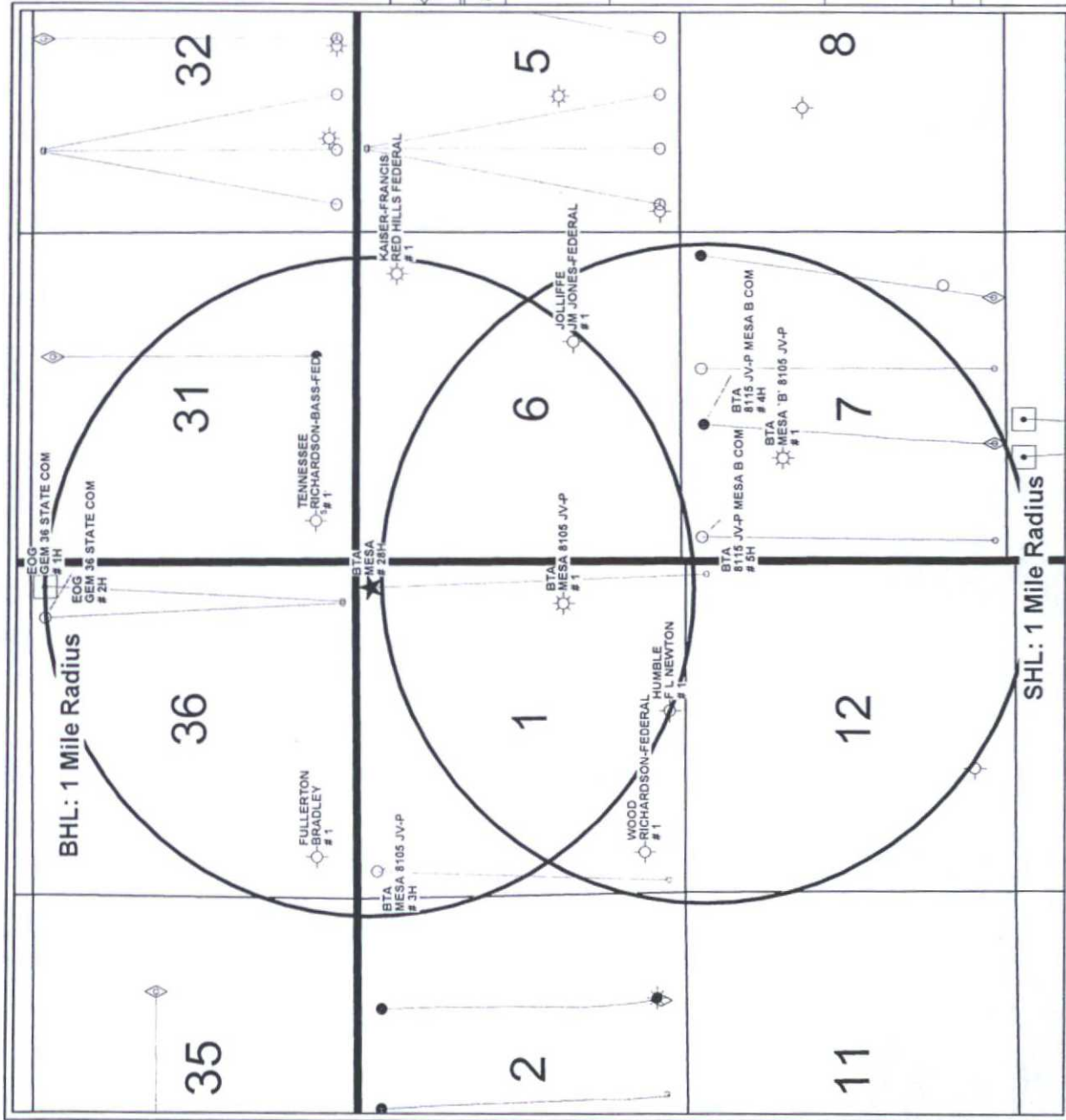
- ★ Proposed Location
- Location Only
- Drilled, Waiting on Completion
- Oil Well
- ⊙ Gas Well
- ⊙ Oil & Gas Well
- ⊙ Dry Hole
- ⊙ Dry Hole With Oil & Gas Show
- ⊙ Oil & Gas Well

REMARKS

8105 JV-P Mesa #28H Bottom Hole Location
 Highlighted in Yellow

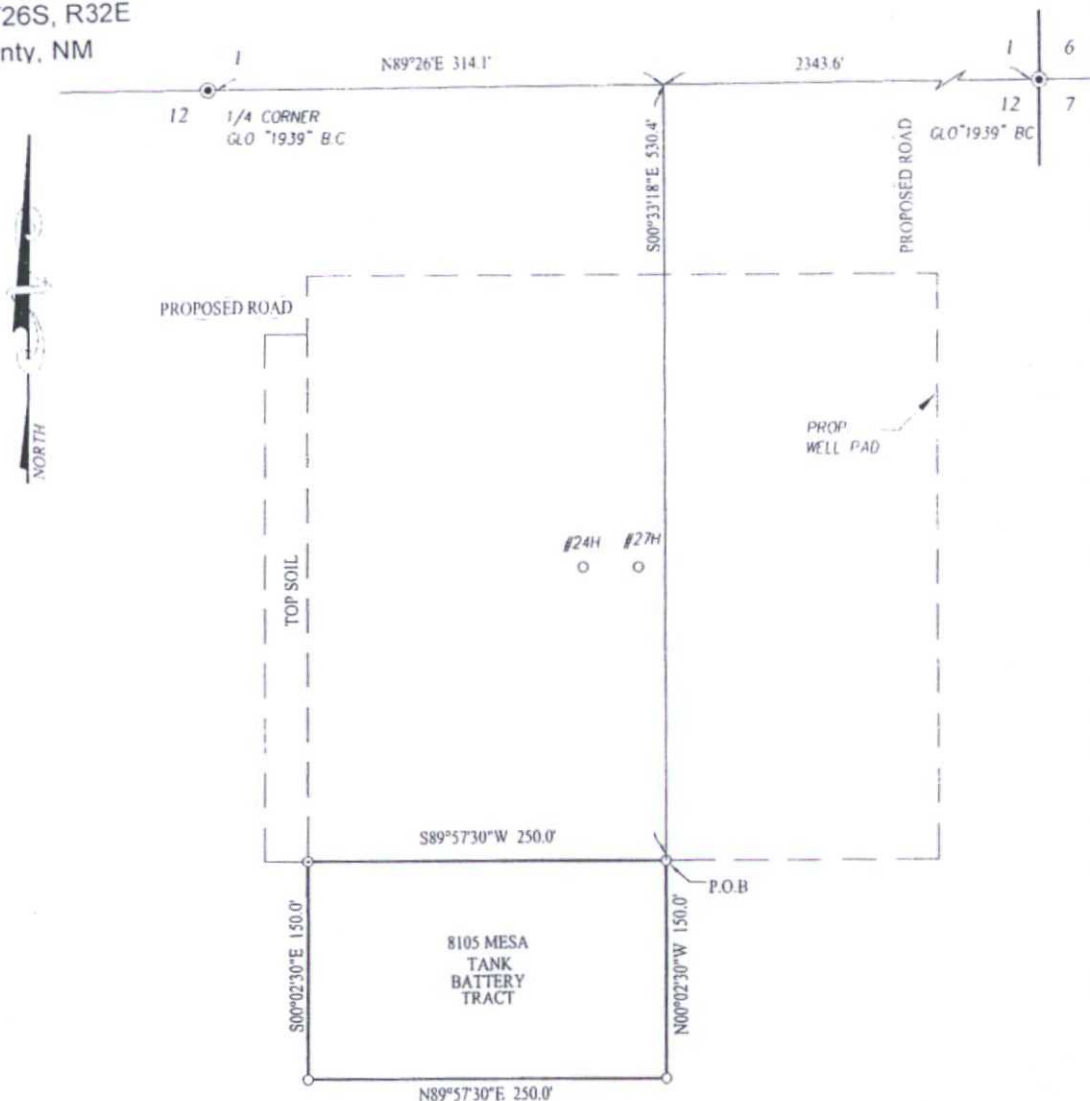
Only Wells Inside a Mile Radius of Surface &
 Bottom Hole Locations Labeled

By: JHB



Attachment to APD
BTA Oil Producers, LLC
Mesa 8105 JV-P #28H
Sec 12, T26S, R32E
Lea County, NM

COPY



DESCRIPTION:

A TRACT SITUATED IN THE NORTHEAST QUARTER OF SECTION 12, TOWNSHIP 26 SOUTH, RANGE 32 EAST, N.M.P.M., LEA COUNTY, NEW MEXICO AND BEING MORE PARTICULARLY DESCRIBED AS FOLLOWS:

BEGINNING AT THE NORTHEAST CORNER WHICH LIES N89°26'42\"/>

NOTE:

BEARINGS SHOWN HEREON ARE MERCATOR GRID AND CONFORM TO THE NEW MEXICO COORDINATE SYSTEM "NEW MEXICO EAST ZONE" NORTH AMERICAN DATUM 1983. DISTANCES ARE SURFACE VALUES.

I, RONALD J. EIDSON, NEW MEXICO PROFESSIONAL SURVEYOR No. 3239, DO HEREBY CERTIFY THAT THIS SURVEY PLAT AND THE ACTUAL SURVEY ON THE GROUND UPON WHICH IT IS BASED WERE PERFORMED BY ME OR UNDER MY DIRECT SUPERVISION. I AM RESPONSIBLE FOR THIS SURVEY; THAT THIS SURVEY MEETS THE MINIMUM STANDARDS FOR SURVEYING IN NEW MEXICO; AND THAT IT IS TRUE AND CORRECT TO THE BEST OF MY KNOWLEDGE AND BELIEF.

RONALD J. EIDSON

DATE: 10/20/14

PROVIDING SURVEYING SERVICES
SINCE 1946

JOHN WEST SURVEYING COMPANY

412 N. DIAL PASO HOBBS, N.M. 88240

(575) 393-3117 www.jwsc.biz

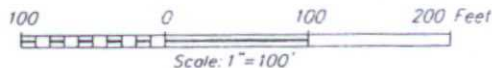
TBPLS# 10021000



© DRAFTING

LEGEND

● DENOTES FOUND CORNER AS NOTED



BTA OIL PRODUCERS, LLC

SURVEY FOR A TANK BATTERY TRACT
SITUATED IN THE NE/4 OF SECTION 12,
TOWNSHIP 26 SOUTH, RANGE 32 EAST, N.M.P.M.
LEA COUNTY, NEW MEXICO

Survey Date: 10/20/14

CAD Date: 11/19/14

Drawn By: LSL

W.O. No.: 14111114

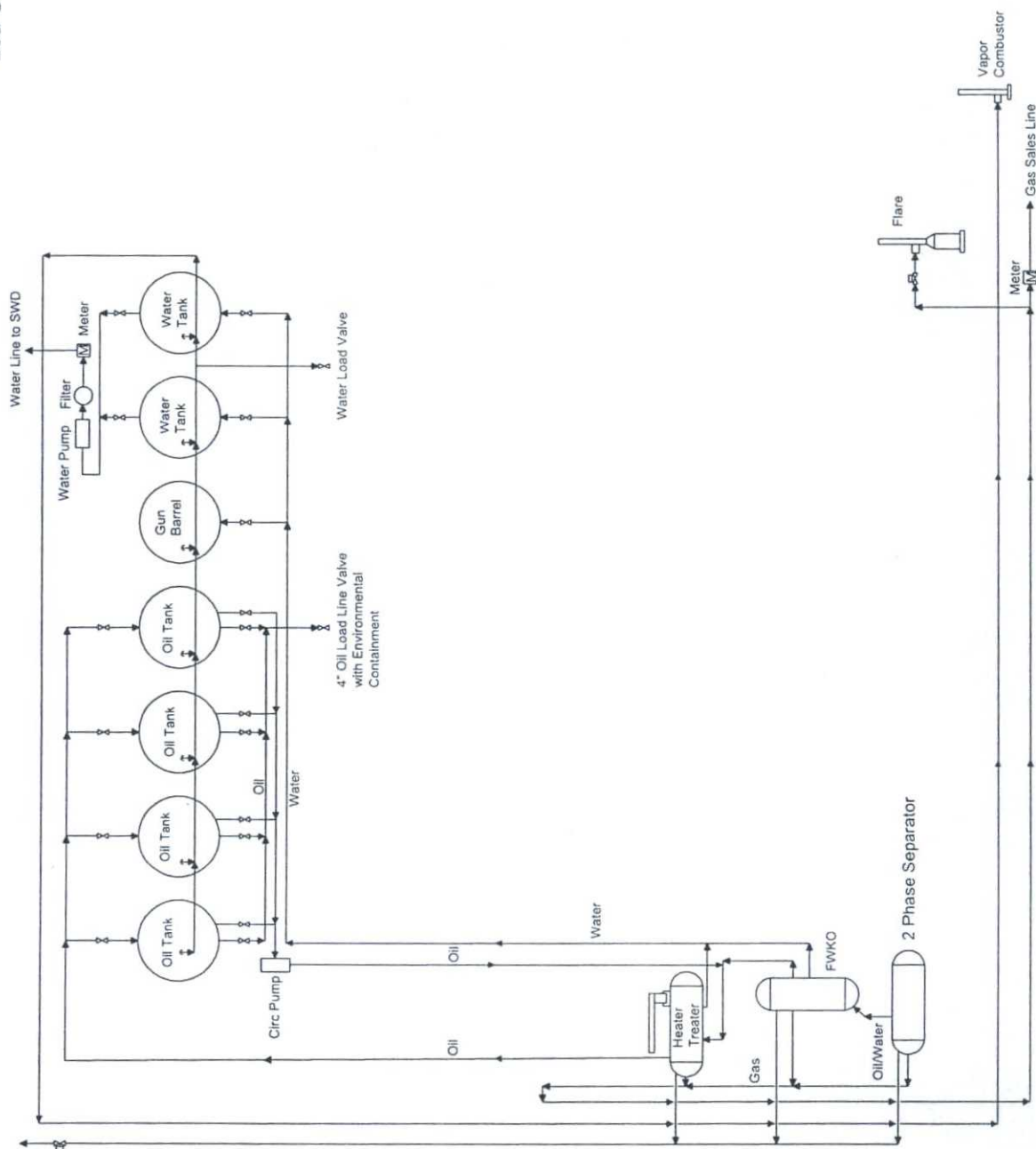
Rev:

Rel. W.O.:

Sheet 1 of 1

COPY

BTA Oil Producers, LLC
Mesa 8105 JV-P #28H
Proposed Central Tank Battery
Sec 12, T26S, R32E
Lea County, NM



NOT TO SCALE

BTA Oil Producers, LLC

Mesa 8105 JV-P

-Proposed-

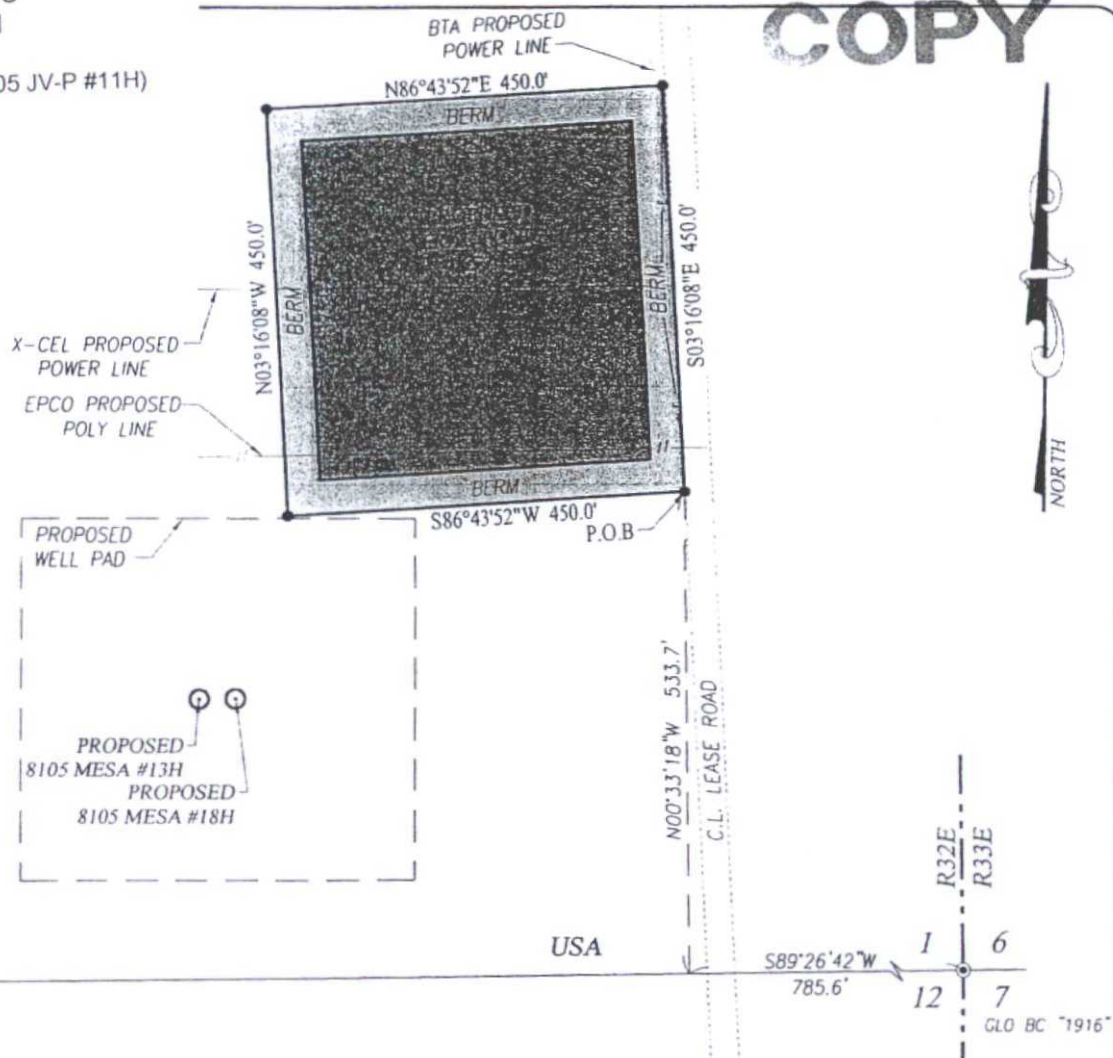
Central Tank Battery

Section 12, T26S-R32E

Lea County, NM

BTA Oil Producers, LLC
Mesa 8105 JV-P #28H
Frac Pond
(permitted with Mesa 8105 JV-P #11H)
Sec 12, T26S, R32E
Lea County, NM

COPY



LEGEND

- DENOTES SET CORNER AS NOTED
- ⊙ DENOTES FOUND CORNER AS NOTED

NOTE

BEARINGS SHOWN HEREON ARE MERCATOR GRID AND CONFORM TO THE NEW MEXICO COORDINATE SYSTEM "NEW MEXICO EAST ZONE" NORTH AMERICAN DATUM 1983. DISTANCES ARE SURFACE VALUES.

I, RONALD J. EIDSON, NEW MEXICO PROFESSIONAL SURVEYOR No. 3239, DO HEREBY CERTIFY THAT THIS SURVEY PLAT AND THE ACTUAL SURVEY ON THE GROUND UPON WHICH IT IS BASED WERE PERFORMED BY ME OR UNDER MY DIRECT SUPERVISION; THAT I AM RESPONSIBLE FOR THIS SURVEY; THAT THIS SURVEY MEETS THE MINIMUM STANDARDS FOR SURVEYING IN NEW MEXICO; AND THAT IT IS TRUE AND CORRECT TO THE BEST OF MY KNOWLEDGE AND BELIEF.

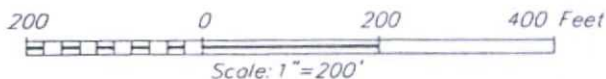
RONALD J. EIDSON

DATE: 01/23/2015

DESCRIPTION:

A TRACT FOR A FRAC POND SITUATED IN THE SOUTHEAST QUARTER OF SECTION 1, TOWNSHIP 26 SOUTH, RANGE 32 EAST, N.M.P.M., LEA COUNTY, NEW MEXICO AND BEING MORE PARTICULARLY DESCRIBED AS FOLLOWS:

BEGINNING AT THE SOUTHEAST CORNER OF THIS TRACT WHICH LIES S89°26'42"W 785.6 FEET AND N00°33'18"W 533.7 FEET FROM THE SOUTHEAST CORNER; THEN S86°43'52"W 450.0 FEET; THEN N03°16'08"W 450.0 FEET; THEN N86°43'52"E 450.0 FEET; THEN S03°16'08"E 450.0 FEET TO THE POINT OF BEGINNING AND CONTAINING 4.65 ACRES MORE OR LESS.



BTA OIL PRODUCERS, LLC

SURVEY FOR A FRAC POND TRACT
SITUATED IN THE SE/4 OF SECTION 1,
TOWNSHIP 26 SOUTH, RANGE 32 EAST, N.M.P.M.
LEA COUNTY, NEW MEXICO



PROVIDING SURVEYING SERVICES
SINCE 1946
JOHN WEST SURVEYING COMPANY
412 N. DAL PASO HOBBS, N.M. 88240
(575) 393-3117 www.jwsc.biz
TBPLS# 10021000

Survey Date: 1/16/15	CAD Date: 1/22/15	Drawn By: ACK
W.O. No.: 15110029	Rev:	Rel. W.O.: 14111113

Sheet 1 of 1

8105 Mesa Plan of Development Proposed Flowlines

BTA Oil Producers, LLC
Mesa 8105 JV-P #28H
Proposed Flowlines Map
Sec 12, T26S, R32E
Lea County, NM

Approximate Distance
Well to Central Tank Battery Per Section

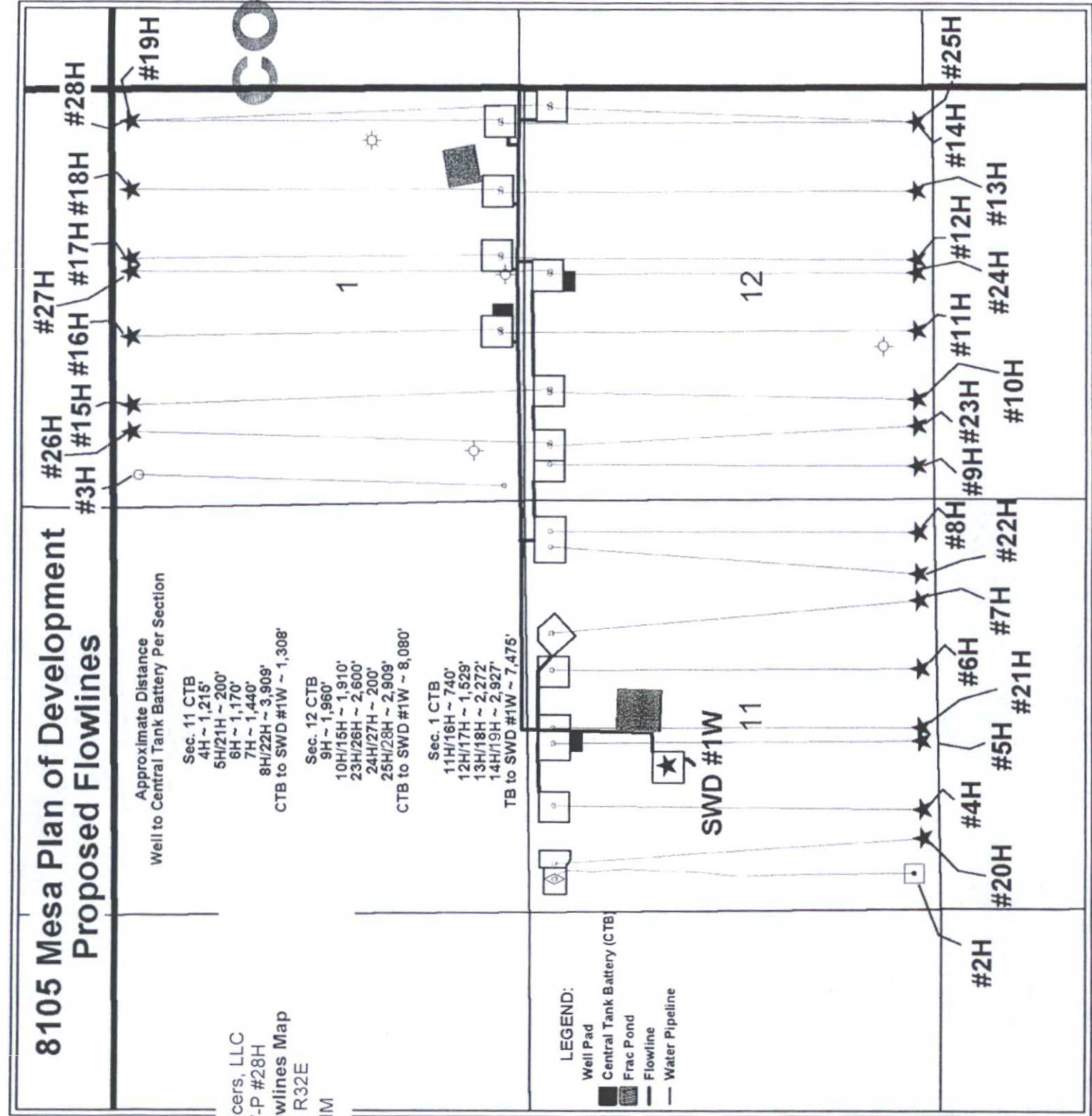
Sec. 11 CTB
4H ~ 1,215'
5H/21H ~ 200'
6H ~ 1,170'
7H ~ 1,440'
8H/22H ~ 3,909'
CTB to SWD #1W ~ 1,308'

Sec. 12 CTB
9H ~ 1,960'
10H/15H ~ 1,910'
23H/26H ~ 2,600'
24H/27H ~ 200'
25H/28H ~ 2,909'
CTB to SWD #1W ~ 8,080'

Sec. 1 CTB
11H/16H ~ 740'
12H/17H ~ 1,529'
13H/18H ~ 2,272'
14H/19H ~ 2,927'
TB to SWD #1W ~ 7,475'

LEGEND:

- Well Pad
- Central Tank Battery (CTB)
- Frac Pond
- Flowline
- Water Pipeline



COPY