

Exhibit A-1

District I
1625 N. French Dr., Hobbs, NM 88240
Phone: (575) 393-6161 Fax: (575) 393-0720
District II
811 S. First St., Artesia, NM 88210
Phone: (575) 748-1283 Fax: (575) 748-9720
District III
1000 Rio Brazos Road, Aztec, NM 87410
Phone: (505) 334-6178 Fax: (505) 334-6170
District IV
1220 S. St. Francis Dr., Santa Fe, NM 87505
Phone: (505) 476-3460 Fax: (505) 476-3462

State of New Mexico
Energy, Minerals & Natural Resources Department
OIL CONSERVATION DIVISION
1220 South St. Francis Dr.
Santa Fe, NM 87505

Form C-102
Revised August 1, 2011
Submit one copy to appropriate
District Office
☐ AMENDED REPORT

RECEIVED

WELL LOCATION AND ACREAGE DEDICATION PLAT

¹ API Number 30-025-42969	² Pool Code 9.7088	³ Well Name WC-025 6-08 52535340 BS
⁴ Property Code 715684	⁵ Property Name MOONLIGHT BUTTRESS 26 FEDERAL	
⁷ OGRID No. 4323	⁸ Operator Name CHEVRON USA, INC	⁶ Well Number 1H
⁹ Elevation 3187.6		

" Surface Location

UL or lot no.	Section	Township	Range	Lot Idn	Feet from the	North/South line	Feet from the	East/West line	County
M	26	25 S	35 E		90	SOUTH	660	WEST	LEA

" Bottom Hole Location If Different From Surface

UL or lot no.	Section	Township	Range	Lot Idn	Feet from the	North/South line	Feet from the	East/West line	County
D	26	25 S	35 E		330	NORTH	660	WEST	LEA

¹² Dedicated Acres 160	¹³ Joint or Infill	¹⁴ Consolidation Code	¹⁵ Order No.
---	-------------------------------	----------------------------------	-------------------------

No allowable will be assigned to this completion until all interests have been consolidated or a non-standard unit has been approved by the division.

" OPERATOR CERTIFICATION

I hereby certify that the information contained herein is true and complete to the best of my knowledge and belief, and that this organization either owns a working interest or unleased mineral interest in the land including the proposed bottom hole location or has a right to drill this well at this location pursuant to a contract with an owner of such a mineral or working interest, or to a voluntary pooling agreement or a compulsory pooling order heretofore entered by the division.

Signature: Denise Pinkerton Date: 09/03/2015

Printed Name: Denise Pinkerton

E-mail Address: leakejd@chevron.com

" SURVEYOR CERTIFICATION

I hereby certify that the well location shown on this plat was plotted from field notes of actual surveys made by me or under my supervision, and that the same is true and correct to the best of my belief.

AUGUST 21, 2015

Date of Survey: (12797)

Signature and Seal of Professional Surveyor: [Signature]

Certificate Number: PHILIP J. JARAMILLO, PLS 12797

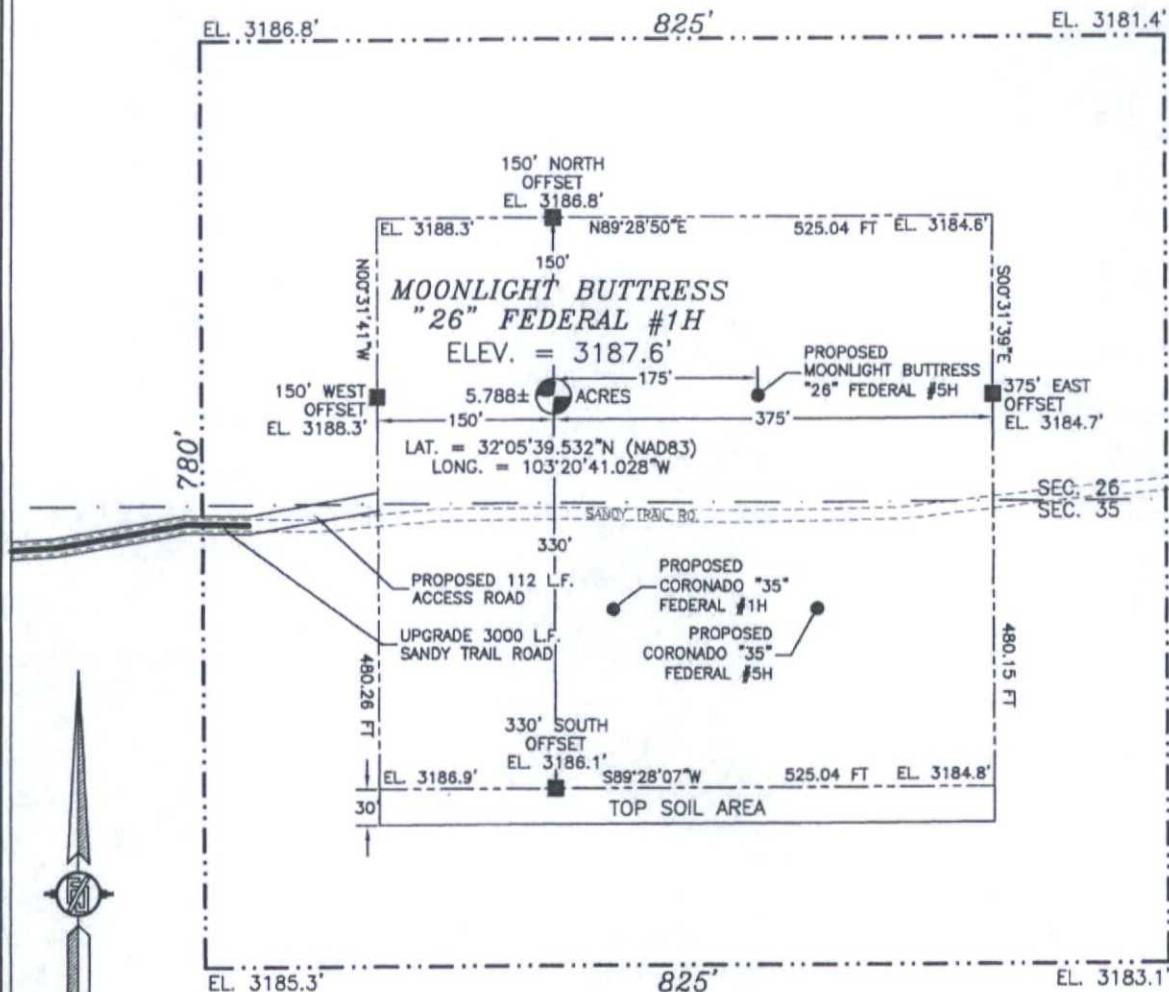
SURVEY NO. 3310

DEC 01 2015

Exhibit A-2

SECTION 26, TOWNSHIP 25 SOUTH, RANGE 35 EAST, N.M.P.M.
LEA COUNTY, STATE OF NEW MEXICO
SITE MAP

NOTE: LATITUDE AND LONGITUDE COORDINATES ARE SHOWN USING THE NORTH AMERICAN DATUM OF 1983 (NAD83) IN DEGREES, MINUTES AND DECIMAL SECONDS FORMAT, BASIS OF BEARING IS NEW MEXICO STATE PLANE EAST (NAD83) COORDINATES MODIFIED TO SURFACE.



015 75 150 300

SCALE 1" = 150'

DIRECTIONS TO LOCATION

FROM STATE HWY. 128 AND CR. #2 (BATTLE AXE) GO SOUTHEAST ON HWY. 128 0.2 MILES, TURN RIGHT ON CALICHE ROAD AND GO SOUTH-SOUTHEAST 4.2 MILES, TURN LEFT AND GO EAST 1.2 MILES, BEND RIGHT AND GO SOUTH 0.7 MILES, TURN LEFT AND GO EAST 2.3 MILES, TURN RIGHT AND GO SOUTH 0.75 MILES, TURN LEFT ON SANDY TRAIL ROAD AND GO EAST 3000' TO THE WEST EDGE OF PROPOSED PAD FOR THIS LOCATION.

CHEVRON USA, INC
MOONLIGHT BUTTRESS "26" FEDERAL #1H
LOCATED 90 FT. FROM THE SOUTH LINE
AND 660 FT. FROM THE WEST LINE OF
SECTION 26, TOWNSHIP 25 SOUTH,
RANGE 35 EAST, N.M.P.M.
LEA COUNTY, STATE OF NEW MEXICO

AUGUST 21, 2014

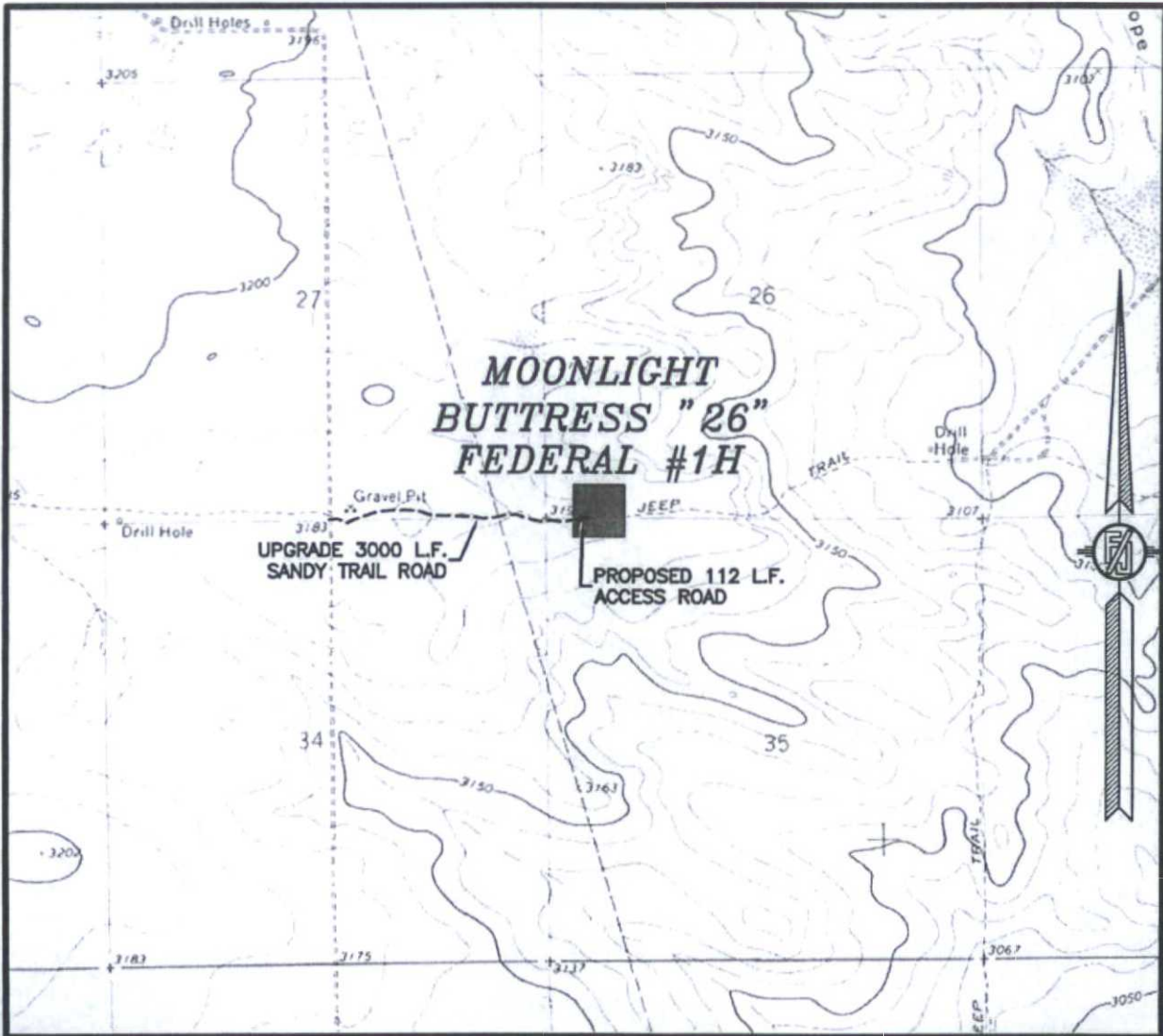
SURVEY NO. 3310

MADRON SURVEYING, INC. 301 SOUTH CANAL (575) 234-3341

CARLSBAD, NEW MEXICO

Exhibit A-3

SECTION 26, TOWNSHIP 25 SOUTH, RANGE 35 EAST, N.M.P.M.
LEA COUNTY, STATE OF NEW MEXICO
LOCATION VERIFICATION MAP



USGS QUAD MAP:
JAVELINA BASIN

NOT TO SCALE

CHEVRON USA, INC
MOONLIGHT BUTTRESS "26" FEDERAL #1H
LOCATED 90 FT. FROM THE SOUTH LINE
AND 660 FT. FROM THE WEST LINE OF
SECTION 26, TOWNSHIP 25 SOUTH,
RANGE 35 EAST, N.M.P.M.
LEA COUNTY, STATE OF NEW MEXICO

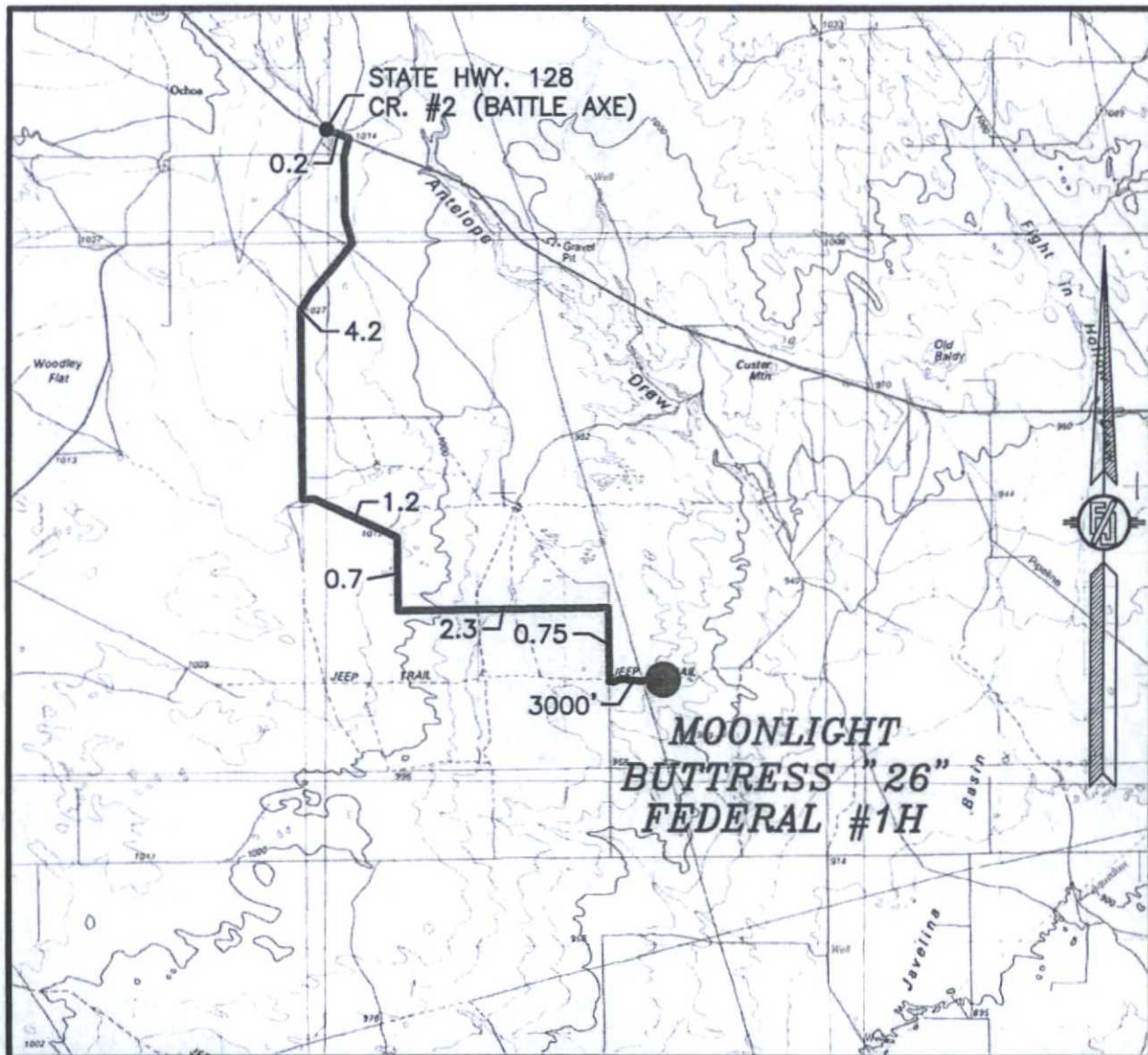
AUGUST 21, 2014

SURVEY NO. 3310

MADRON SURVEYING, INC. 301 SOUTH CANAL (575) 234-3341 CARLSBAD, NEW MEXICO

Exhibit A-4

SECTION 26, TOWNSHIP 25 SOUTH, RANGE 35 EAST, N.M.P.M.
LEA COUNTY, STATE OF NEW MEXICO
VICINITY MAP



DISTANCES IN MILES

NOT TO SCALE

DIRECTIONS TO LOCATION

FROM STATE HWY. 128 AND CR. #2 (BATTLE AXE) GO SOUTHEAST ON HWY. 128 0.2 MILES, TURN RIGHT ON CALICHE ROAD AND GO SOUTH-SOUTHEAST 4.2 MILES, TURN LEFT AND GO EAST 1.2 MILES, BEND RIGHT AND GO SOUTH 0.7 MILES, TURN LEFT AND GO EAST 2.3 MILES, TURN RIGHT AND GO SOUTH 0.75 MILES, TURN LEFT ON SANDY TRAIL ROAD AND GO EAST 3000' TO THE WEST EDGE OF PROPOSED PAD FOR THIS LOCATION.

CHEVRON USA, INC
MOONLIGHT BUTRESS "26"
FEDERAL #1H

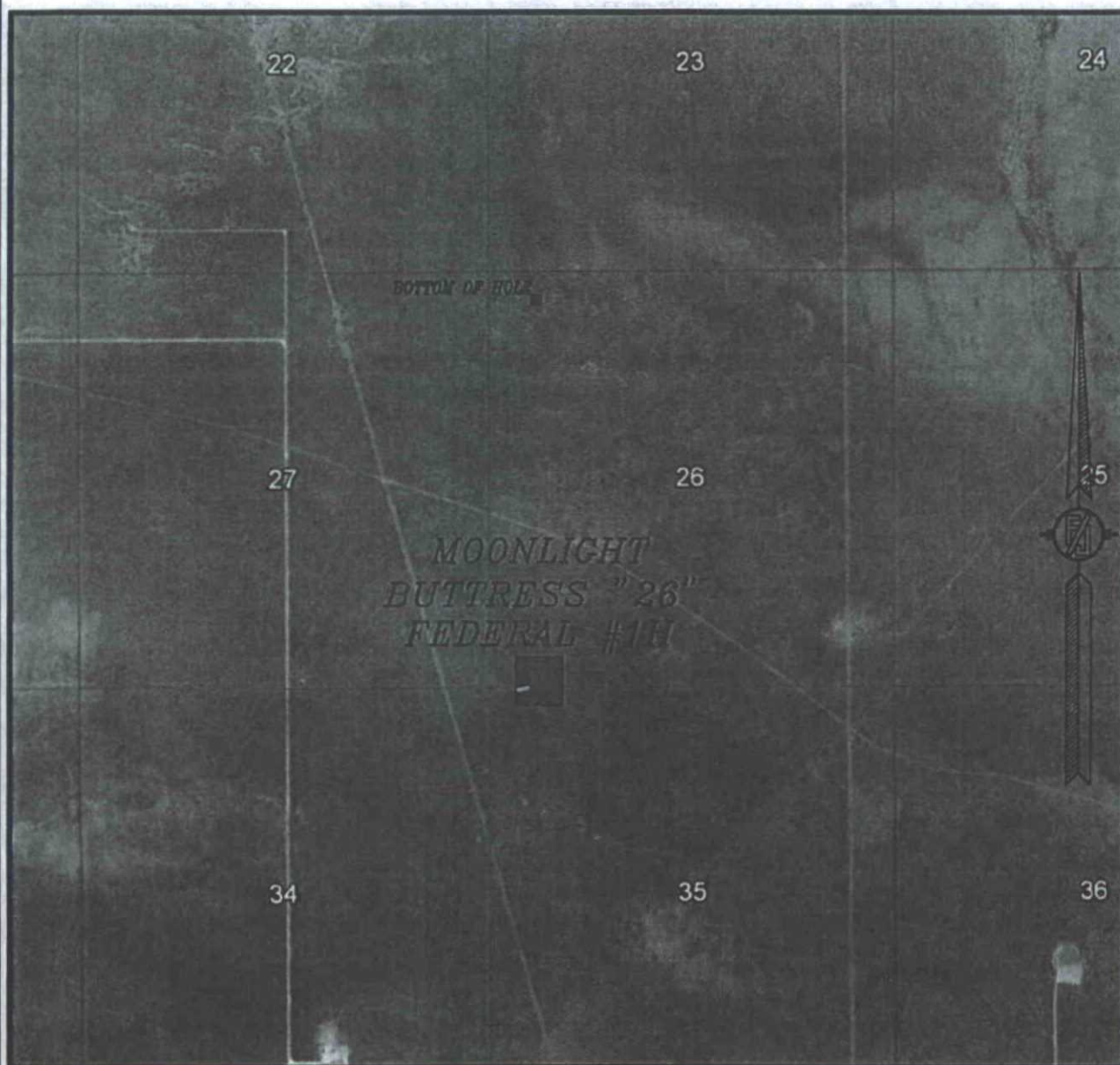
LOCATED 90 FT. FROM THE SOUTH LINE
AND 660 FT. FROM THE WEST LINE OF
SECTION 26, TOWNSHIP 25 SOUTH,
RANGE 35 EAST, N.M.P.M.
LEA COUNTY, STATE OF NEW MEXICO

AUGUST 21, 2014

SURVEY NO. 3310

MADRON SURVEYING, INC. 301 SOUTH CANAL CARLSBAD, NEW MEXICO
(575) 234-3341

SECTION 26, TOWNSHIP 25 SOUTH, RANGE 35 EAST, N.M.P.M.
LEA COUNTY, STATE OF NEW MEXICO
AERIAL PHOTO



NOT TO SCALE
AERIAL PHOTO:
GOOGLE EARTH
APR. 2013

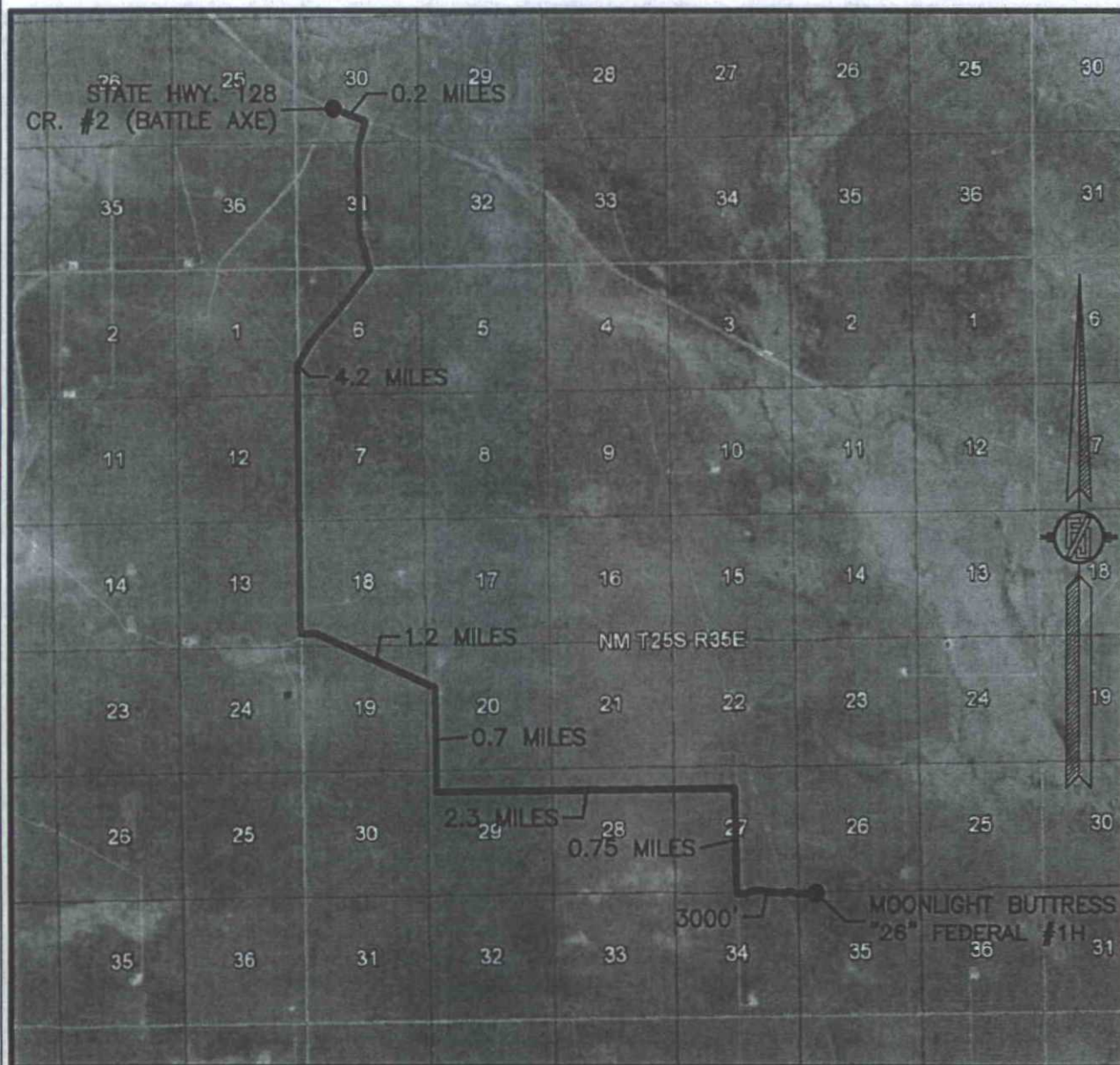
CHEVRON USA, INC
MOONLIGHT BUTTRESS "26" FEDERAL #1H
LOCATED 90 FT. FROM THE SOUTH LINE
AND 660 FT. FROM THE WEST LINE OF
SECTION 26, TOWNSHIP 25 SOUTH,
RANGE 35 EAST, N.M.P.M.
LEA COUNTY, STATE OF NEW MEXICO

AUGUST 21, 2014

SURVEY NO. 3310

MADRON SURVEYING, INC. 301 SOUTH CANAL (575) 234-3341 CARLSBAD, NEW MEXICO

SECTION 26, TOWNSHIP 25 SOUTH, RANGE 35 EAST, N.M.P.M.
LEA COUNTY, STATE OF NEW MEXICO
AERIAL ACCESS ROUTE MAP



NOT TO SCALE
AERIAL PHOTO:
GOOGLE EARTH
APR. 2013

CHEVRON USA, INC
MOONLIGHT BUTRESS "26" FEDERAL #1H
LOCATED 90 FT. FROM THE SOUTH LINE
AND 660 FT. FROM THE WEST LINE OF
SECTION 26, TOWNSHIP 25 SOUTH,
RANGE 35 EAST, N.M.P.M.
LEA COUNTY, STATE OF NEW MEXICO

AUGUST 21, 2014

SURVEY NO. 3310

MADRON SURVEYING, INC. 301 SOUTH CANAL CARLSBAD, NEW MEXICO
(575) 234-3341

EXHIBIT 13

1258-315

14

13

300

20

21

22

23

24

30025383080000

30025383080002

29

28

27

26

25

MOOREHEAD

MOOREHEAD

30025375170000

32

33

34

35

36

30025279160008
30025279160002