

DEC 21 2015

District I  
1625 N. French Dr., Hobbs, NM 88240  
Phone: (575) 393-6161 Fax: (575) 393-0720

District II  
811 S. First St., Artesia, NM 88210  
Phone: (575) 748-1283 Fax: (575) 748-9720

District III  
1000 Rio Bravos Road, Aztec, NM 87410  
Phone: (505) 334-6178 Fax: (505) 334-6170

District IV  
1220 S. St. Francis Dr., Santa Fe, NM 87505  
Phone: (505) 476-3460 Fax: (505) 476-3462

State of New Mexico  
Energy, Minerals & Natural Resources Department  
OIL CONSERVATION DIVISION  
1220 South St. Francis Dr.  
Santa Fe, NM 87505

RECEIVED

Form C-102  
Revised August 1, 2011  
Submit one copy to appropriate  
District Office

☐ AMENDED REPORT

## WELL LOCATION AND ACREAGE DEDICATION PLAT

<sup>1</sup> API Number <b>30-025-42982</b>	<sup>2</sup> Pool Code 53800	<sup>3</sup> Pool Name Sand Dunes; Bone Spring
<sup>4</sup> Property Code <b>315729</b>	<sup>5</sup> Property Name <b>STRAY CAT 8 FED COM</b>	<sup>6</sup> Well Number <b>1H</b>
<sup>7</sup> OGRID No. 6137	<sup>8</sup> Operator Name <b>DEVON ENERGY PRODUCTION COMPANY, L.P.</b>	<sup>9</sup> Elevation <b>3592.9</b>

<sup>10</sup> Surface Location

UL or lot no.	Section	Township	Range	Lot Idn	Feet from the	North/South line	Feet from the	East/West line	County
<b>M</b>	<b>8</b>	<b>23 S</b>	<b>32 E</b>		<b>211</b>	<b>SOUTH</b>	<b>660</b>	<b>WEST</b>	<b>LEA</b>

<sup>11</sup> Bottom Hole Location If Different From Surface

UL or lot no.	Section	Township	Range	Lot Idn	Feet from the	North/South line	Feet from the	East/West line	County
<b>D</b>	<b>8</b>	<b>23 S</b>	<b>32 E</b>		<b>330</b>	<b>NORTH</b>	<b>660</b>	<b>WEST</b>	<b>LEA</b>

<sup>12</sup> Dedicated Acres	<sup>13</sup> Joint or Infill	<sup>14</sup> Consolidation Code	<sup>15</sup> Order No.
<b>160 ac</b>			

No allowable will be assigned to this completion until all interests have been consolidated or a non-standard unit has been approved by the division.

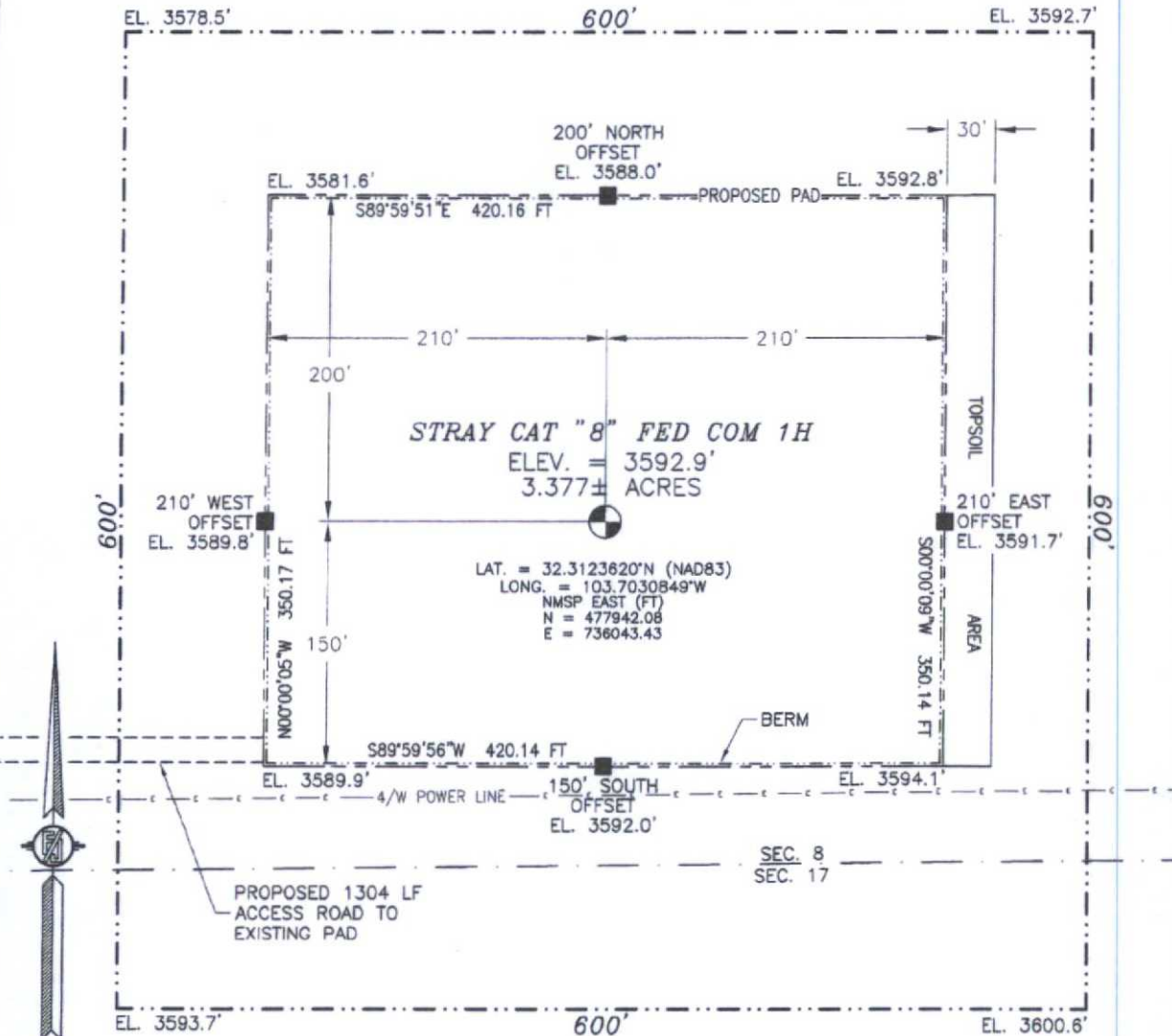
<p>N89°24'01"E 2632.53 FT</p> <p>NW CORNER SEC. 8 LAT. = 32.3262916°N LONG. = 103.7052340°W</p> <p>NMSP EAST (FT) N = 483005.71 E = 735949.81</p> <p>BOTTOM OF HOLE LAT. = 32.3259307°N LONG. = 103.7030948°W</p> <p>NMSP EAST (FT) N = 482682.70 E = 736012.51</p> <p>W Q CORNER SEC. 8 LAT. = 32.3190319°N LONG. = 103.7052094°W</p> <p>NMSP EAST (FT) N = 480364.73 E = 735372.88</p> <p>STRAY CAT 8" FED COM 1H ELEV. = 3592.9' LAT. = 32.3123620°N (NAD83) LONG. = 103.7030849°W</p> <p>NMSP EAST (FT) N = 477942.08 E = 736043.43</p> <p>SURFACE LOCATION NMNM98826</p> <p>SW CORNER SEC. 8 LAT. = 32.3117746°N LONG. = 103.7052219°W</p> <p>NMSP EAST (FT) N = 477724.51 E = 735984.50</p> <p>S89°25'44"W 2637.38 FT</p>		<p>N89°24'57"E 2638.04 FT</p> <p>NE CORNER SEC. 8 LAT. = 32.3263551°N LONG. = 103.6881754°W</p> <p>NMSP EAST (FT) N = 483060.15 E = 740618.95</p> <p>E Q CORNER SEC. 8 LAT. = 32.3190959°N LONG. = 103.6881708°W</p> <p>NMSP EAST (FT) N = 480419.26 E = 740636.28</p> <p>SE CORNER SEC. 8 LAT. = 32.3118416°N LONG. = 103.6881673°W</p> <p>NMSP EAST (FT) N = 477780.18 E = 740653.25</p> <p>S89°21'37"W 2632.81 FT</p>		<p><b>" OPERATOR CERTIFICATION</b></p> <p>I hereby certify that the information contained herein is true and complete to the best of my knowledge and belief, and that this organization either owns a working interest or mineral interest in the land including the proposed bottom hole location or has a right to drill this well at this location pursuant to a contract with an owner of such a mineral or working interest, or to a voluntary pooling agreement or a compulsory pooling order heretofore entered by the division.</p> <p><i>Trina C. Couch</i> 3/3/15 Signature Date</p> <p>Trina C. Couch, Regulatory Analyst Printed Name</p> <p>trina.couch@dmv.com E-mail Address</p>
<p>NOTE: LATITUDE AND LONGITUDE COORDINATES ARE SHOWN USING THE NORTH AMERICAN DATUM OF 1983 (NAD83). LISTED NEW MEXICO STATE PLANE EAST COORDINATES ARE GRID (NAD83). BASIS OF BEARING AND DISTANCES USED ARE NEW MEXICO STATE PLANE EAST COORDINATES MODIFIED TO THE SURFACE.</p>		<p><b>" SURVEYOR CERTIFICATION</b></p> <p>I hereby certify that the well location shown on this plat was plotted from field notes of actual surveys made by me or under my supervision and that the same is true and correct to the best of my belief.</p> <p>JANUARY 24 2015 12797</p> <p>DATE OF SURVEY</p> <p><i>Elmion F. Jaramillo</i> Signature and Seal of Professional Surveyor</p> <p>Certificate Number: <b>ELMION F. JARAMILLO, PLS 12797</b> SURVEY NO. 3638</p>		

DEC 21 2015

SECTION 8, TOWNSHIP 23 SOUTH, RANGE 32 EAST, N.M.P.M.  
LEA COUNTY, STATE OF NEW MEXICO

SITE MAP

NOTE: LATITUDE AND LONGITUDE COORDINATES ARE SHOWN USING THE NORTH AMERICAN DATUM OF 1983 (NAD83). LISTED NEW MEXICO STATE PLANE EAST COORDINATES ARE GRID (NAD83). BASIS OF BEARING AND DISTANCES USED ARE NEW MEXICO STATE PLANE EAST COORDINATES MODIFIED TO THE SURFACE



010 50 100 200

SCALE 1" = 100'  
DIRECTIONS TO LOCATION

FROM THE INTERSECTION OF STATE HIGHWAY 128 AND RED ROAD (CR 798) GO NORTH ON RED ROAD APPROX. 4.9 MILES TO A LEASE ROAD ON RIGHT (EAST). TURN EAST AT LEASE ROAD GO APPROX. 1.9 MILES, ROAD TURNS RIGHT (SOUTH), TURN SOUTH GO APPROX. 0.8 MILES TO AN EXISTING WELL PAD ON LEFT (EAST) OF ROAD BEFORE ROAD TURNS RIGHT (WEST). AT SOUTH EDGE MIDDLE OF EXISTING PAD IS A DIRT TRAIL ROAD GOING SOUTH IS A ROAD LATH WITH RED & WHITE FLAGGING, GO SOUTHEAST FOLLOW ROAD LATHS 864' TO A PI RIGHT ROAD LATH, GO SOUTH 150' TO A PI LEFT ROAD LATH, GO EAST 490' TO THE SOUTHWEST PAD CORNER FOR THIS LOCATION.

DEVON ENERGY PRODUCTION COMPANY, L.P.

STRAY CAT "8" FED COM 1H

LOCATED 211 FT. FROM THE SOUTH LINE  
AND 660 FT. FROM THE WEST LINE OF

SECTION 8, TOWNSHIP 23 SOUTH,  
RANGE 32 EAST, N.M.P.M.

LEA COUNTY, STATE OF NEW MEXICO

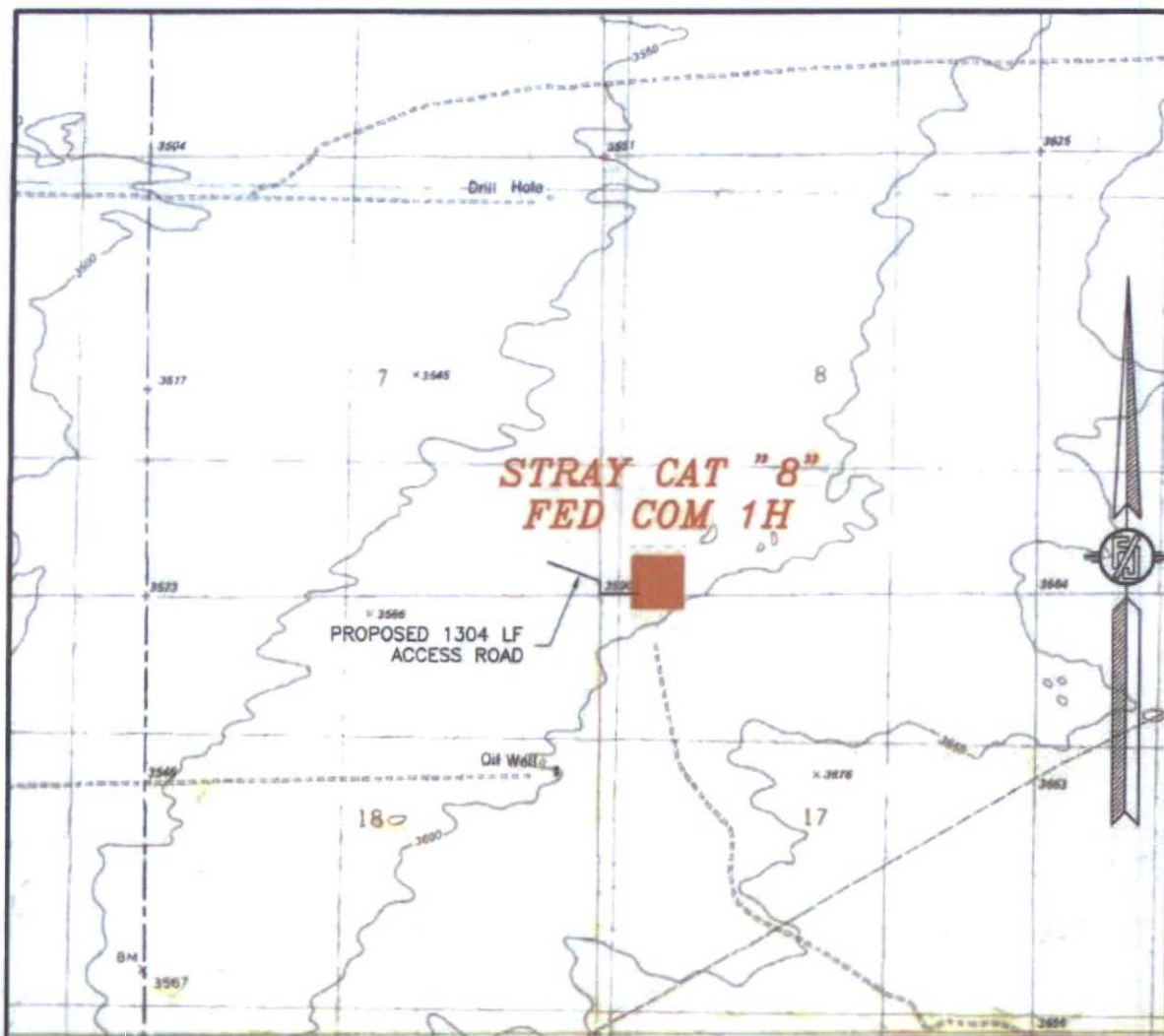
JANUARY 24, 2015

SURVEY NO. 3638

MADRON SURVEYING, INC. 301 SOUTH CANAL (575) 234-3341 CARLSBAD, NEW MEXICO



SECTION 8, TOWNSHIP 23 SOUTH, RANGE 32 EAST, N.M.P.M.  
LEA COUNTY, STATE OF NEW MEXICO  
LOCATION VERIFICATION MAP



USGS QUAD MAP:  
BOOTLEG RIDGE

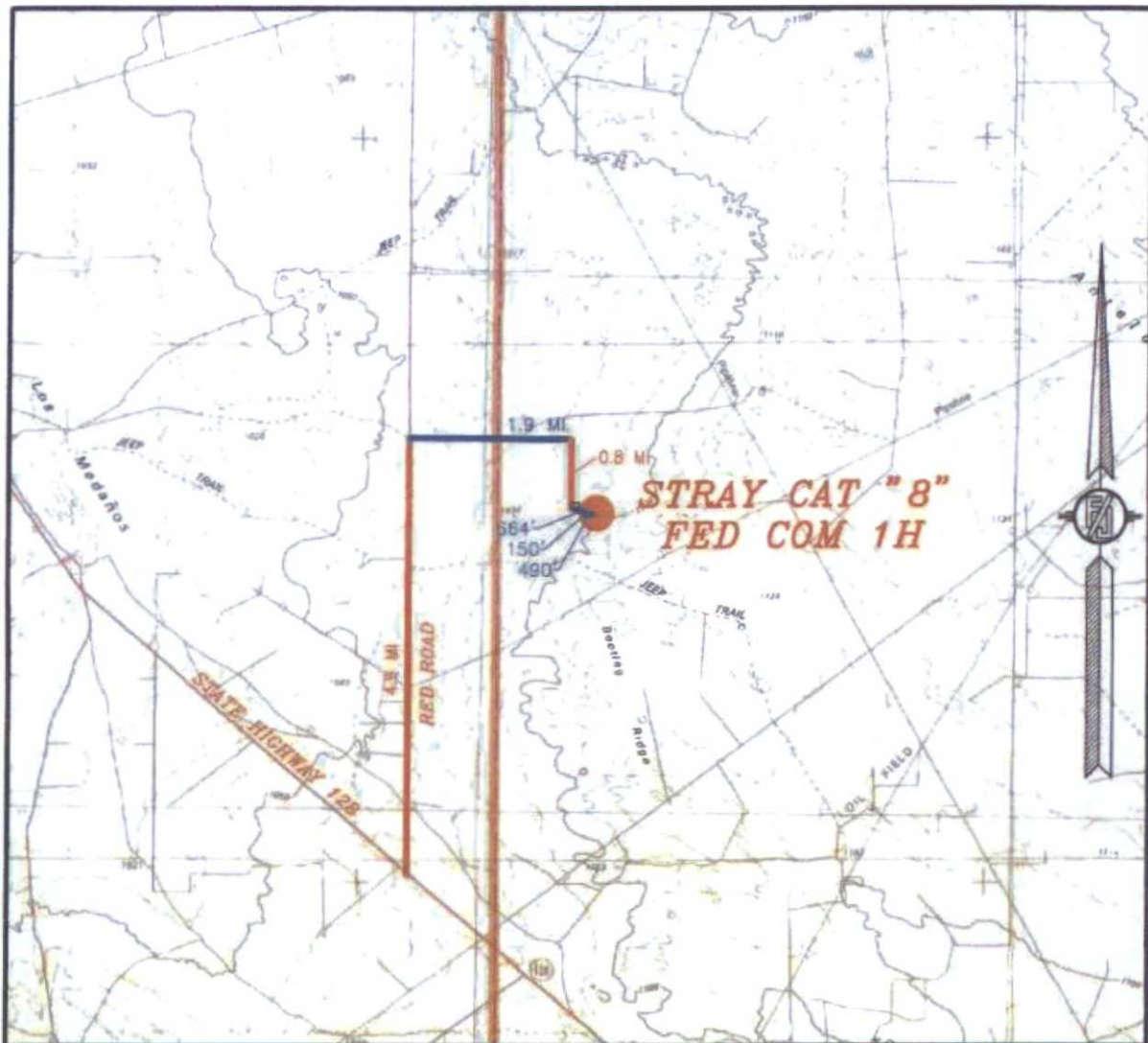
NOT TO SCALE

DEVON ENERGY PRODUCTION COMPANY, L.P.  
**STRAY CAT "8" FED COM 1H**  
LOCATED 211 FT. FROM THE SOUTH LINE  
AND 660 FT. FROM THE WEST LINE OF  
SECTION 8, TOWNSHIP 23 SOUTH,  
RANGE 32 EAST, N.M.P.M.  
LEA COUNTY, STATE OF NEW MEXICO

JANUARY 24, 2015

MADRON SURVEYING, INC. 301 SOUTH CANAL (575) 234-3341 CARLSBAD, NEW MEXICO SURVEY NO. 3638

SECTION 8, TOWNSHIP 23 SOUTH, RANGE 32 EAST, N.M.P.M.  
LEA COUNTY, STATE OF NEW MEXICO  
VICINITY MAP



DISTANCES IN MILES

NOT TO SCALE

DEVON ENERGY PRODUCTION COMPANY, L.P.

**STRAY CAT "8" FED COM 1H**

LOCATED 211 FT. FROM THE SOUTH LINE

AND 660 FT. FROM THE WEST LINE OF

SECTION 8, TOWNSHIP 23 SOUTH,

RANGE 32 EAST, N.M.P.M.

LEA COUNTY, STATE OF NEW MEXICO

JANUARY 24, 2015

**DIRECTIONS TO LOCATION**

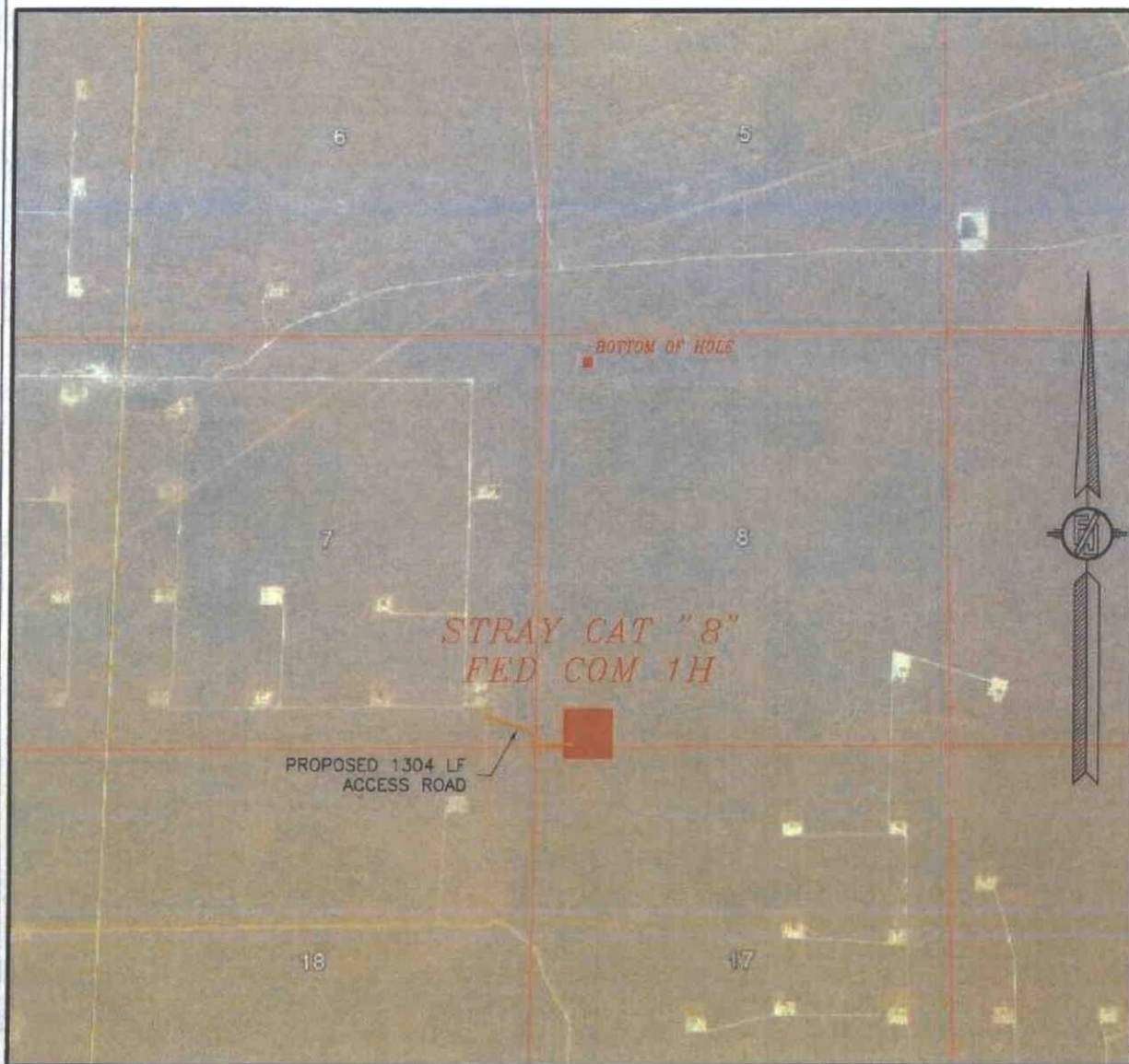
FROM THE INTERSECTION OF STATE HIGHWAY 128 AND RED ROAD (CR 798) GO NORTH ON RED ROAD APPROX. 4.9 MILES TO A LEASE ROAD ON RIGHT (EAST), TURN EAST AT LEASE ROAD GO APPROX. 1.9 MILES, ROAD TURNS RIGHT (SOUTH), TURN SOUTH GO APPROX. 0.8 MILES TO AN EXISTING WELL PAD ON LEFT (EAST) OF ROAD BEFORE ROAD TURNS RIGHT (WEST). AT SOUTH EDGE MIDDLE OF EXISTING PAD IS A DIRT TRAIL ROAD GOING SOUTH IS A ROAD LATH WITH RED & WHITE FLAGGING, GO SOUTHEAST FOLLOW ROAD LATHS 564' TO A PI RIGHT ROAD LATH, GO SOUTH 150' TO A PI LEFT ROAD LATH, GO EAST 490' TO THE SOUTHWEST PAD CORNER FOR THIS LOCATION.

SURVEY NO. 3638

MADRON SURVEYING, INC. 301 SOUTH CANAL (375) 234-3341 CARLSBAD, NEW MEXICO



SECTION 8, TOWNSHIP 23 SOUTH, RANGE 32 EAST, N.M.P.M.  
LEA COUNTY, STATE OF NEW MEXICO  
AERIAL PHOTO



NOT TO SCALE  
AERIAL PHOTO:  
GOOGLE EARTH  
FEBRUARY 2014

DEVON ENERGY PRODUCTION COMPANY, L.P.

**STRAY CAT "8" FED COM 1H**

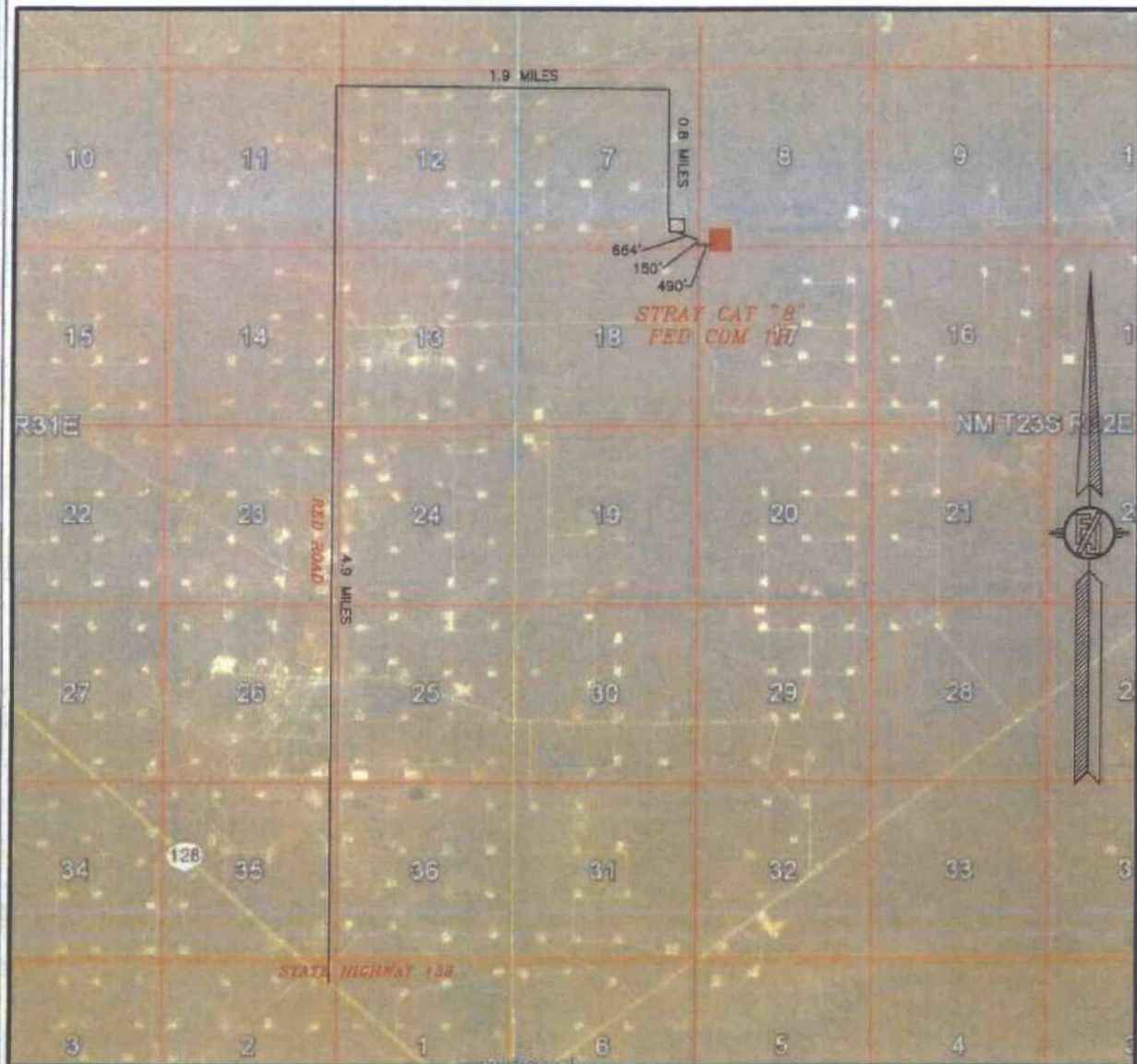
LOCATED 211 FT. FROM THE SOUTH LINE  
AND 660 FT. FROM THE WEST LINE OF  
SECTION 8, TOWNSHIP 23 SOUTH,  
RANGE 32 EAST, N.M.P.M.  
LEA COUNTY, STATE OF NEW MEXICO

JANUARY 24, 2015

SURVEY NO. 3638

MADRON SURVEYING, INC. 301 SOUTH CANAL (575) 234-3341 CARLSBAD, NEW MEXICO

SECTION 8, TOWNSHIP 23 SOUTH, RANGE 32 EAST, N.M.P.M.  
LEA COUNTY, STATE OF NEW MEXICO  
ACCESS AERIAL ROUTE MAP



NOT TO SCALE  
AERIAL PHOTO:  
GOOGLE EARTH  
FEBRUARY 2014

DEVON ENERGY PRODUCTION COMPANY, L.P.

**STRAY CAT "8" FED COM 1H**

LOCATED 211 FT. FROM THE SOUTH LINE  
AND 660 FT. FROM THE WEST LINE OF  
SECTION 8, TOWNSHIP 23 SOUTH,  
RANGE 32 EAST, N.M.P.M.  
LEA COUNTY, STATE OF NEW MEXICO

JANUARY 24, 2015

SURVEY NO. 3638

MADRON SURVEYING, INC. 301 SOUTH CANAL (575) 234-3341 CARLSBAD, NEW MEXICO



Estimated distance to nearest wellbores:

1

23S 32E

12



Stray Cat 8 Fed Com 1H

1 Mile Radius Map



WELL SYMBOLS  
 DRY AND ABANDONED WELL  
 OIL PRODUCING WELL  
 PROPOSED

February 20, 2015

