

DISTRICT I
1625 N. French Dr., Hobbs, NM 88240
Phone: (575) 393-6161 Fax: (575) 393-0720

DISTRICT II
811 S. First St., Artesia, NM 88210
Phone: (575) 748-1283 Fax: (575) 748-9720

DISTRICT III
1000 Rio Brazos Road, Aztec, NM 87410
Phone: (505) 334-6178 Fax: (505) 334-6170

DISTRICT IV
1220 S. St. Francis Dr., Santa Fe, NM 87505
Phone: (505) 476-3460 Fax: (505) 476-3462

State of New Mexico
Energy, Minerals & Natural Resources Department
OIL CONSERVATION DIVISION
1220 South St. Francis Dr.
Santa Fe, NM 87505

HOBBS OCD
DEC 21 2015
RECEIVED

Form C-102
Revised August 1, 2011
Submit one copy to appropriate
District Office

AMENDED REPORT

WELL LOCATION AND ACREAGE DEDICATION PLAT

30-025- ¹ API Number 42988	² Pool Code 98176	WC-025 G-08 4203517M; UPR WC	
⁴ Property Code 315700	Eagleclaw Federal	⁵ Property Name	⁶ Well Number 1H
⁷ GRID No. 20451	SDX Resources, Inc.	⁸ Operator Name	⁹ Elevation 3696'

¹⁰Surface Location

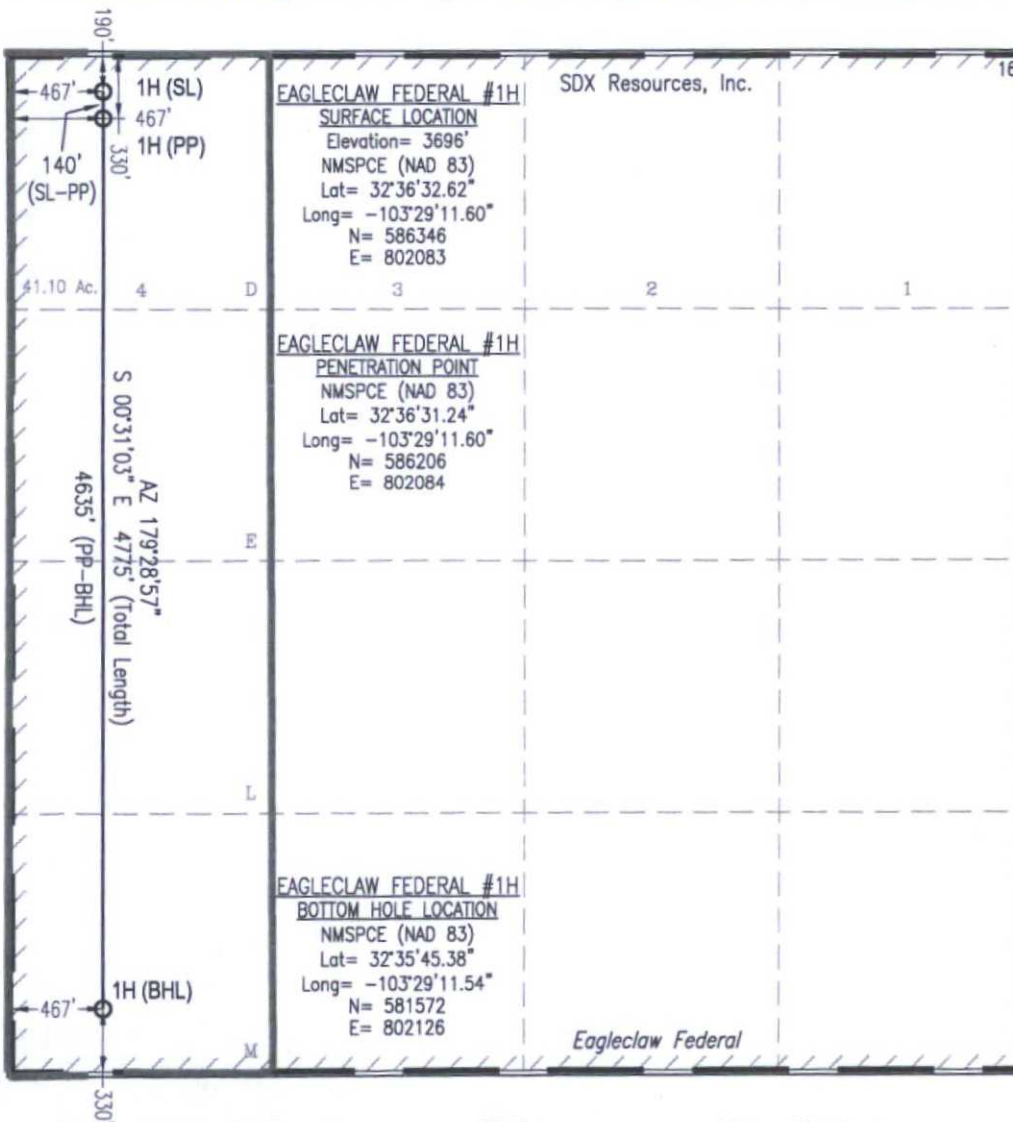
UL or lot no.	Section	Township	Range	Lot Idn	Feet from the	North/South line	Feet from the	East/West line	County
4 or D	5	20 S	35 E	4	190	North	467	West	Lea

¹¹Bottom Hole Location If Different From Surface

UL or lot no.	Section	Township	Range	Lot Idn	Feet from the	North/South line	Feet from the	East/West line	County
M	5	20 S	35 E		330	South	467	West	Lea

¹² Dedicated Acres 161.1	¹³ Joint or Infill	¹⁴ Consolidation Code	¹⁵ Order No.
---	-------------------------------	----------------------------------	-------------------------

No allowable will be assigned to this completion until all interests have been consolidated or a non-standard unit has been approved by the division.



¹⁷OPERATOR CERTIFICATION

I hereby certify that the information contained herein is true and complete to the best of my knowledge and belief, and that this organization either owns a working interest or unleased mineral interest in the land including the proposed bottom hole location or has a right to drill this well at this location pursuant to a contract with an owner of such a mineral or working interest, or to a voluntary pooling agreement or a compulsory pooling order heretofore entered by the division.

Brian Wood **5-11-15**
Signature Date

Brian Wood
Printed Name

brian@permitswest.com
E-mail Address

¹⁸SURVEYOR CERTIFICATION

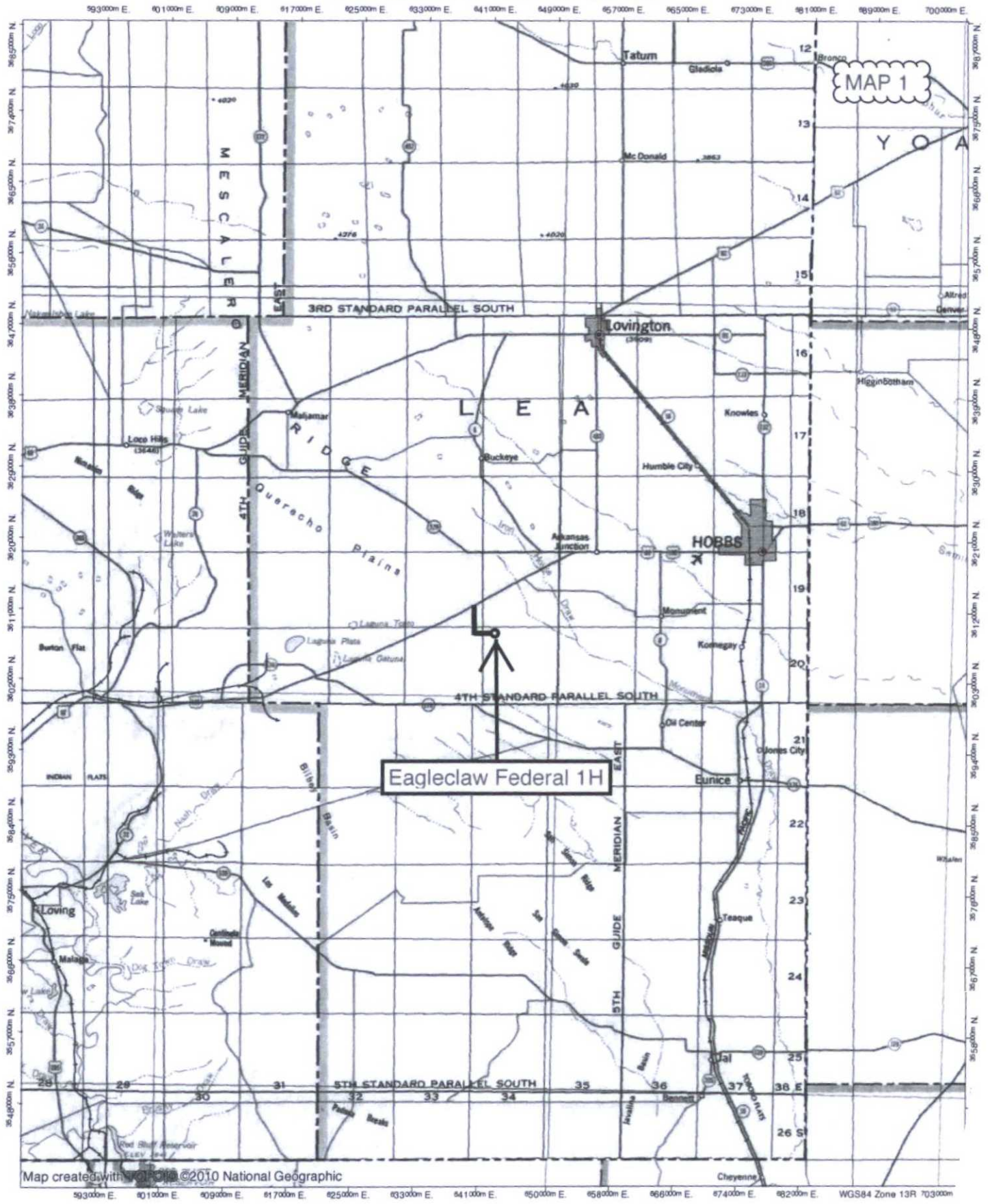
I hereby certify that the well location shown on this plat was plotted from field notes of actual surveys made by me or under my supervision, and that the same is true and correct to the best of my belief.

8-14-2014
Date of Survey

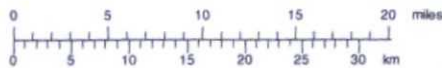
Michael L. Stanford
Signature and Seal of Professional Surveyor

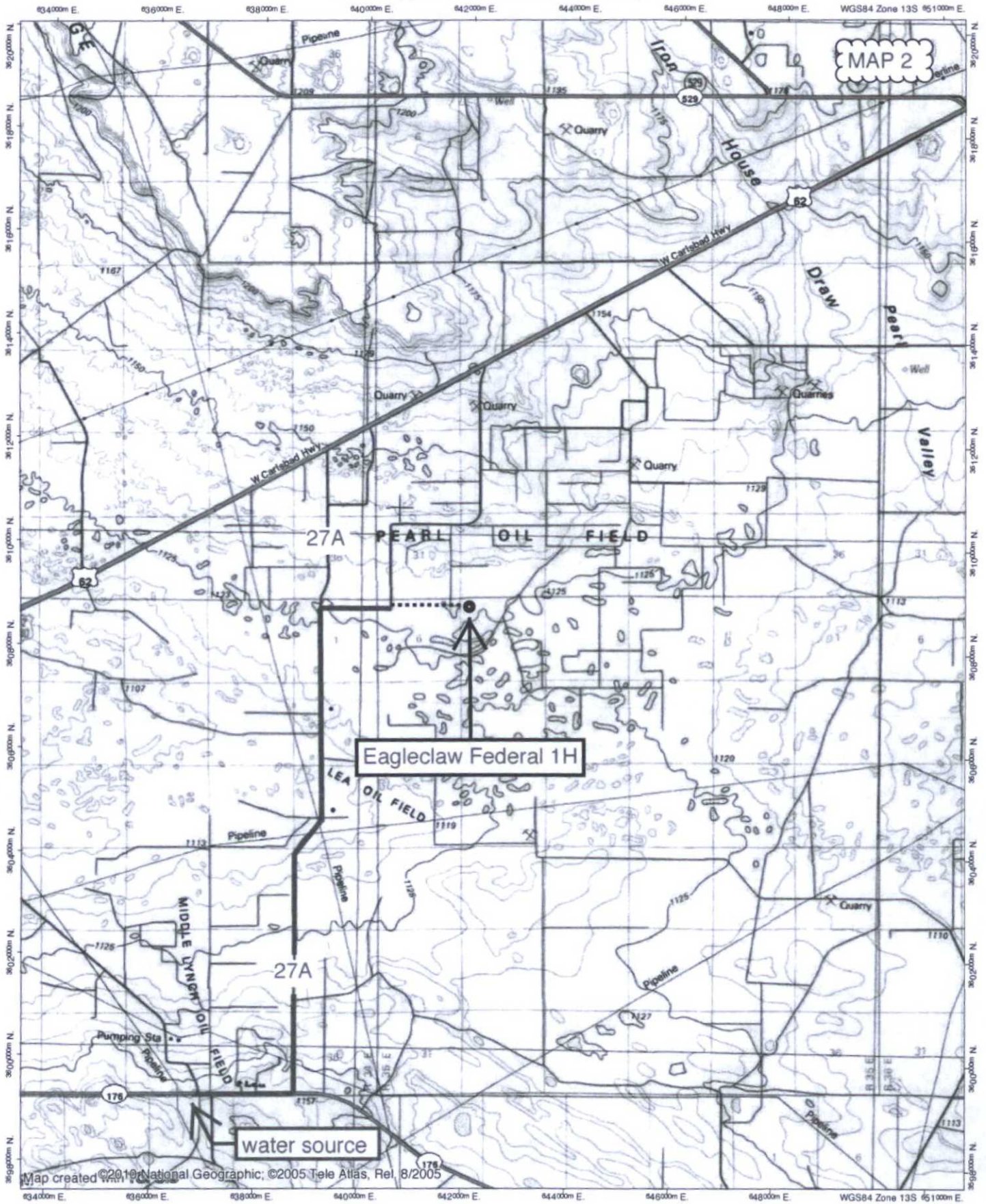
10324
Certificate Number





Map created with ©2010 National Geographic





MAP 2

27A PEARL OIL FIELD

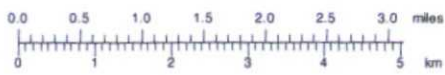
Eagleclaw Federal 1H

LEA OIL FIELD

27A

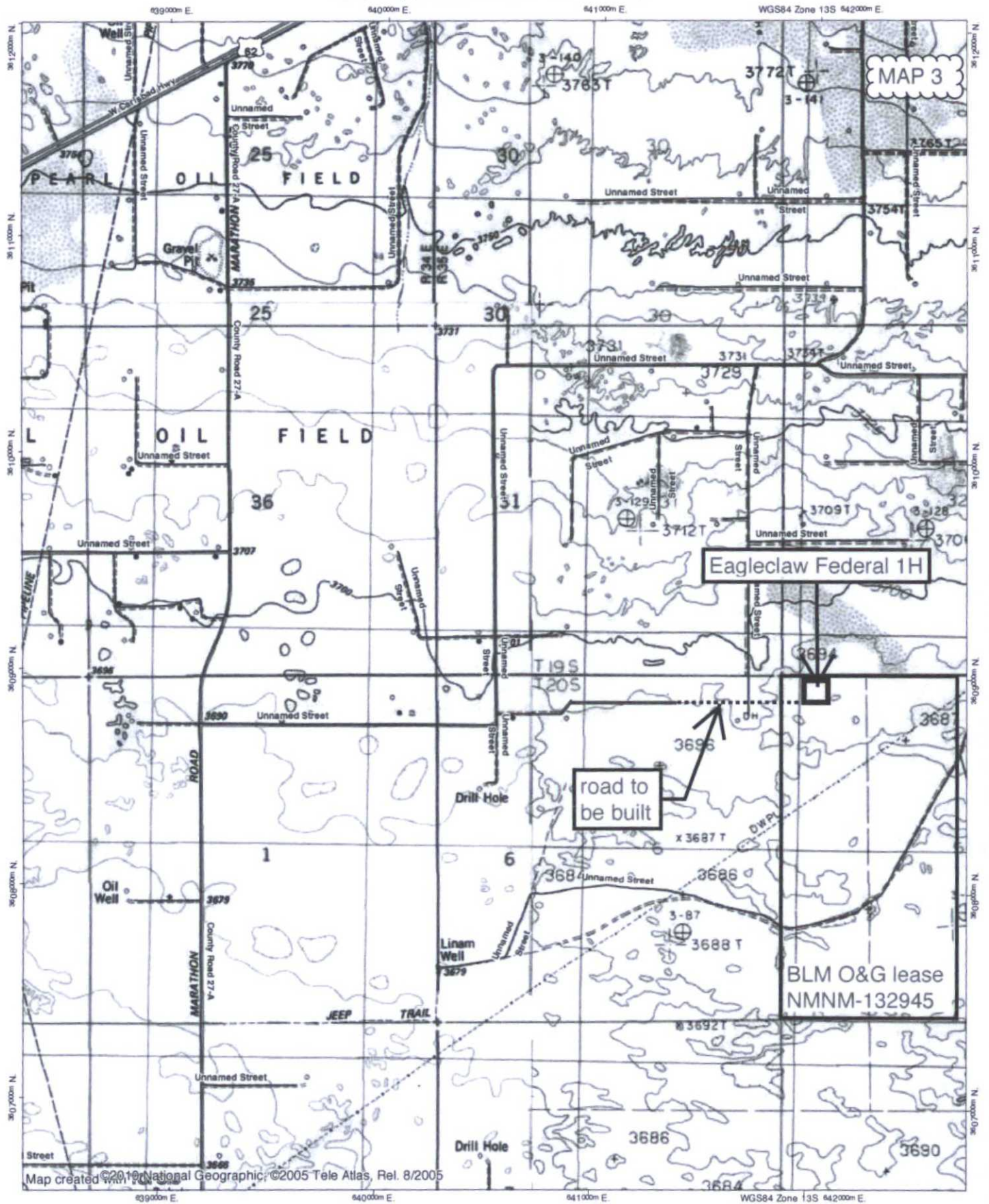
water source

Map created ©2010 National Geographic; ©2005 Tele Atlas, Rel. 8/2005



TN 4 MN
7"

05/10/15

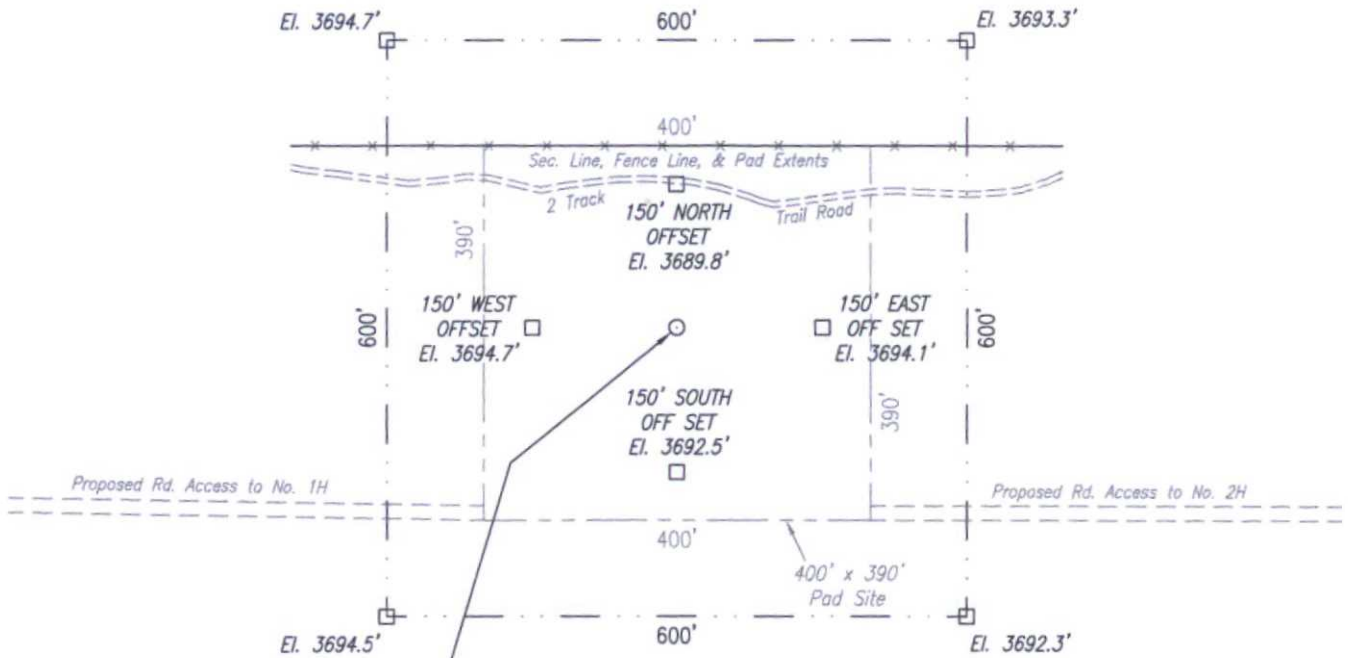


Map created with National Geographic, ©2005 Tele Atlas, Rel. 8/2005



T-19-S, R-35-E
N.M.P.M.

SECTION 32



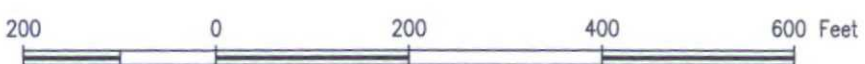
Eagleclaw Federal
No. 1H
Elev. 3696.4'
NAD 83 NM East
N= 586346
E= 802083
NAD 83
Lat. = 32° 36' 32.62"
Long. = -103° 29' 11.60"

SECTION 5

T-20-S, R-35-E
N.M.P.M.



Site Map



SDX Resources, Inc.
Eagleclaw Federal No. 1H - 190' FNL & 467' FWL
Section 5, T-20-S, R-35-E, N.M.P.M.,
Lea County, New Mexico

STANFORD SURVEYING COMPANY
P.O. BOX 8490
MIDLAND, TEXAS 79708-8490
TBPLS Firm No. 10128400 432-699-5708

