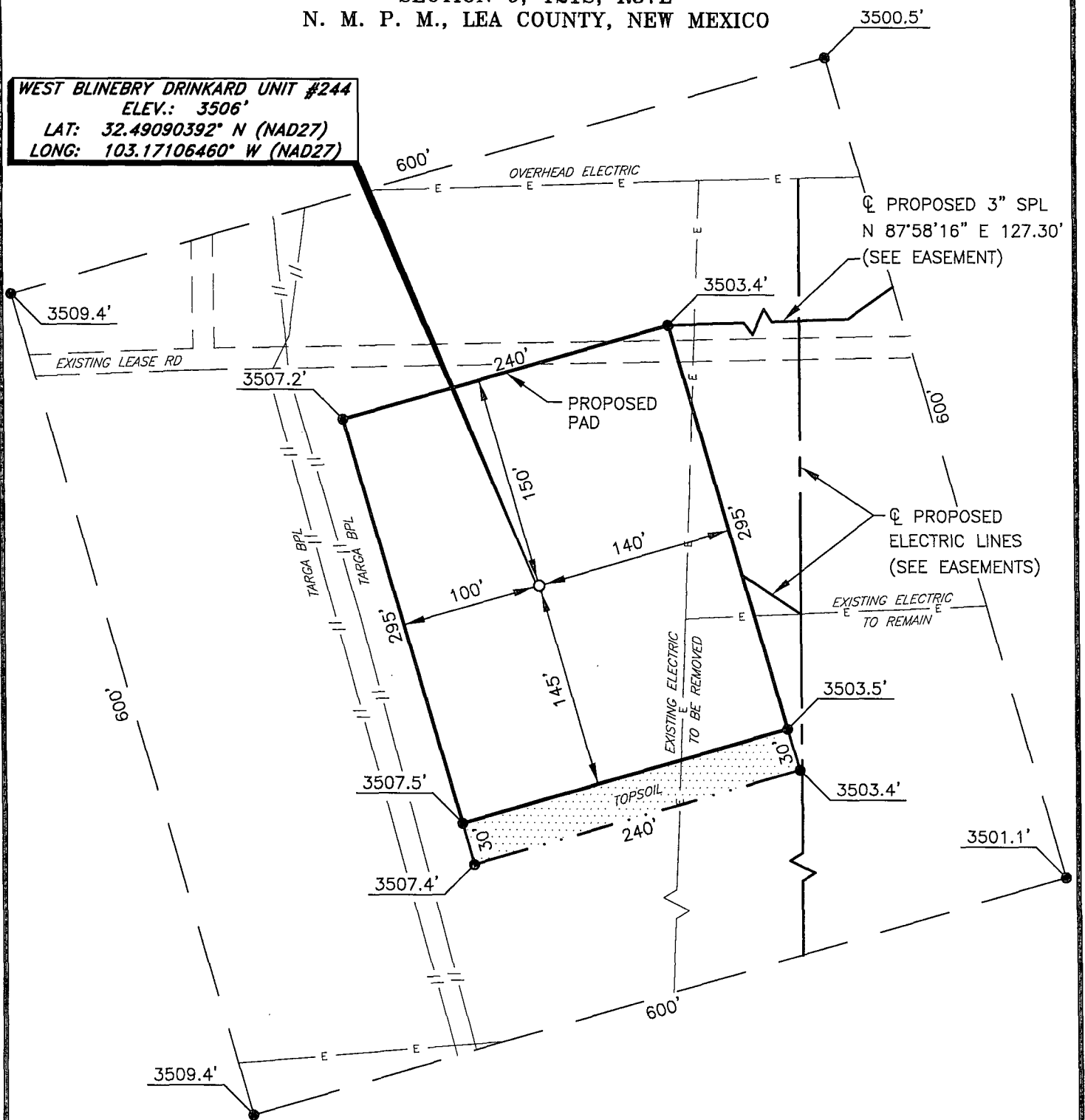




**APACHE CORPORATION**  
**WEST BLINEBRY DRINKARD UNIT #244**  
 (1765' FSL & 1555' FWL)  
 SECTION 9, T21S, R37E  
 N. M. P. M., LEA COUNTY, NEW MEXICO

**WEST BLINEBRY DRINKARD UNIT #244**  
 ELEV.: 3506'  
 LAT: 32.49090392° N (NAD27)  
 LONG: 103.17106460° W (NAD27)

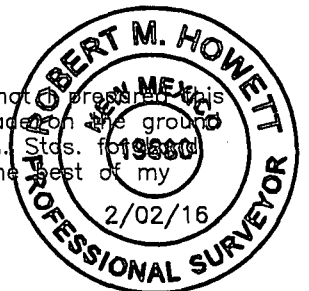


DIRECTIONS TO LOCATION

From the intersection of CR-49 (Hill Rd.) and CR-33 (Turner Rd.);  
 Go Southeast on CR-49 approx. 0.3 miles to a lease road on the left;  
 Turn left and go East approx. 0.2 miles to location on the right.

I, R. M. Howett, a N. M. Professional Surveyor, hereby certify that the proposed well location is an unclassified survey of a well location from an actual survey made on the ground under my direct supervision, said survey and plat meet the Min. Stds. for Professional Surveying in the State of N. M. and are true and correct to the best of my knowledge and belief.

*Robert M. Howett*  
 Robert M. Howett NM PS 19680



SCALE: 1" = 100'

0 50 100

BEARINGS ARE  
 NAD 27 GRID - NM EAST  
 DISTANCES ARE GROUND

Firm No.: TX 10193838 NM 4655451

Copyright 2014 - All Rights Reserved

NO.	REVISION	DATE
JOB NO.: LS1601036		
DWG. NO.: 1601036PAD		

RRC

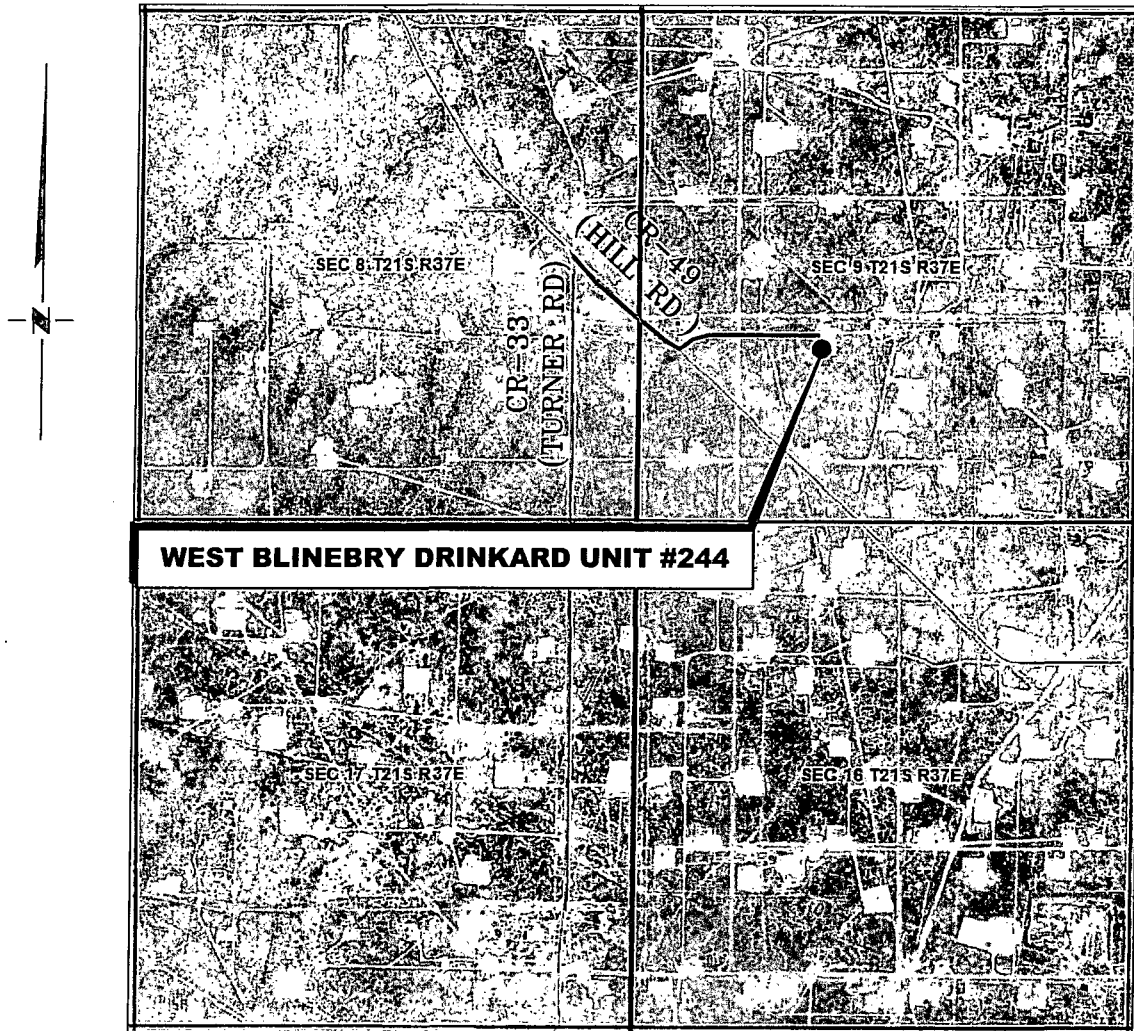
308 W. BROADWAY ST., HOBBS, NM 88240 (575) 964-8200

SCALE: 1" = 100'
DATE: 1-28-2016
SURVEYED BY: ML/CE
DRAWN BY: LPS
APPROVED BY: RMH
SHEET : 1 OF 1

# VICINITY MAP

Exhibit # 1

NOT TO SCALE



**WEST BLINEBRY DRINKARD UNIT #244**

*SECTION 9, TWP. 21 SOUTH, RGE. 37 EAST,  
N. M. P. M., LEA CO., NEW MEXICO*

OPERATOR: Apache Corporation  
 LEASE: West Blinebry Drinkard Unit  
 WELL NO.: 244

LOCATION: 1765' FSL & 1555' FWL  
 ELEVATION: 3506'

Firm No.: TX 10193838 NM 4655451

Copyright 2014 - All Rights Reserved

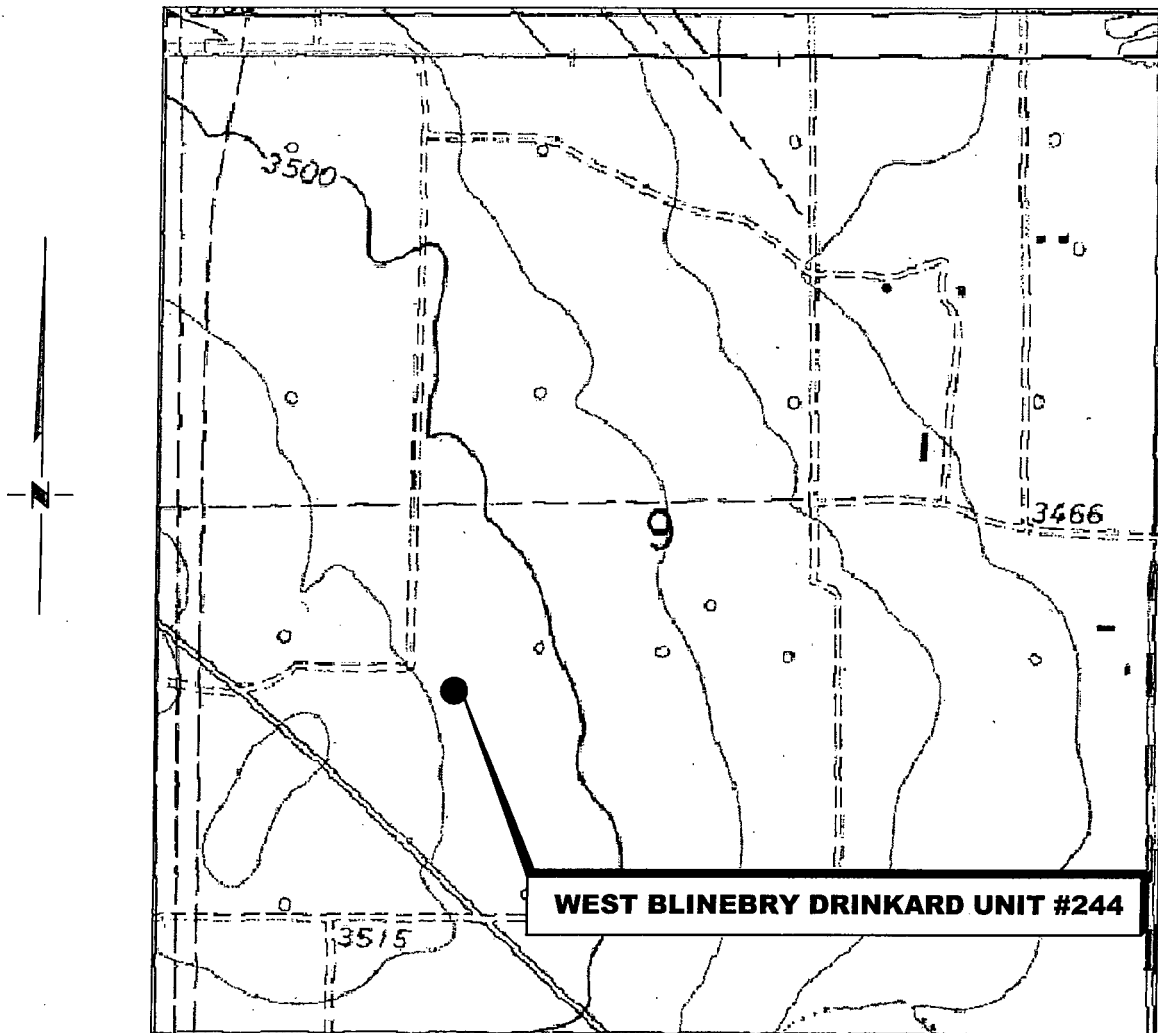
# RRC

NO.	REVISION	DATE
JOB NO.: LS1601036		
DWG. NO.: 1601036VM		

308 W. BROADWAY ST., HOBBS, NM 88240 (575) 964-8200

SCALE: NTS
DATE: 1-28-2016
SURVEYED BY: BK/CG
DRAWN BY: LPS
APPROVED BY: RMH
SHEET : 1 OF 1

# LOCATION VERIFICATION MAP



*(Eunice, NM, is located approx. 3.4 miles to the Southeast.)*

**SECTION 9, TWP. 21 SOUTH, RGE. 37 EAST,  
N. M. P. M., LEA CO., NEW MEXICO**

OPERATOR: Apache Corporation  
 LEASE: West Blinebry Drinkard Unit  
 WELL NO.: 244  
 ELEVATION: 3506'

LOCATION: 1765' FSL & 1555' FWL  
 CONTOUR INTERVAL: 10'  
 USGS TOPO. SOURCE MAP:  
Eunice, NM (1969)

Firm No.: TX 10193838 NM 4655451

Copyright 2015 - All Rights Reserved

# RRC

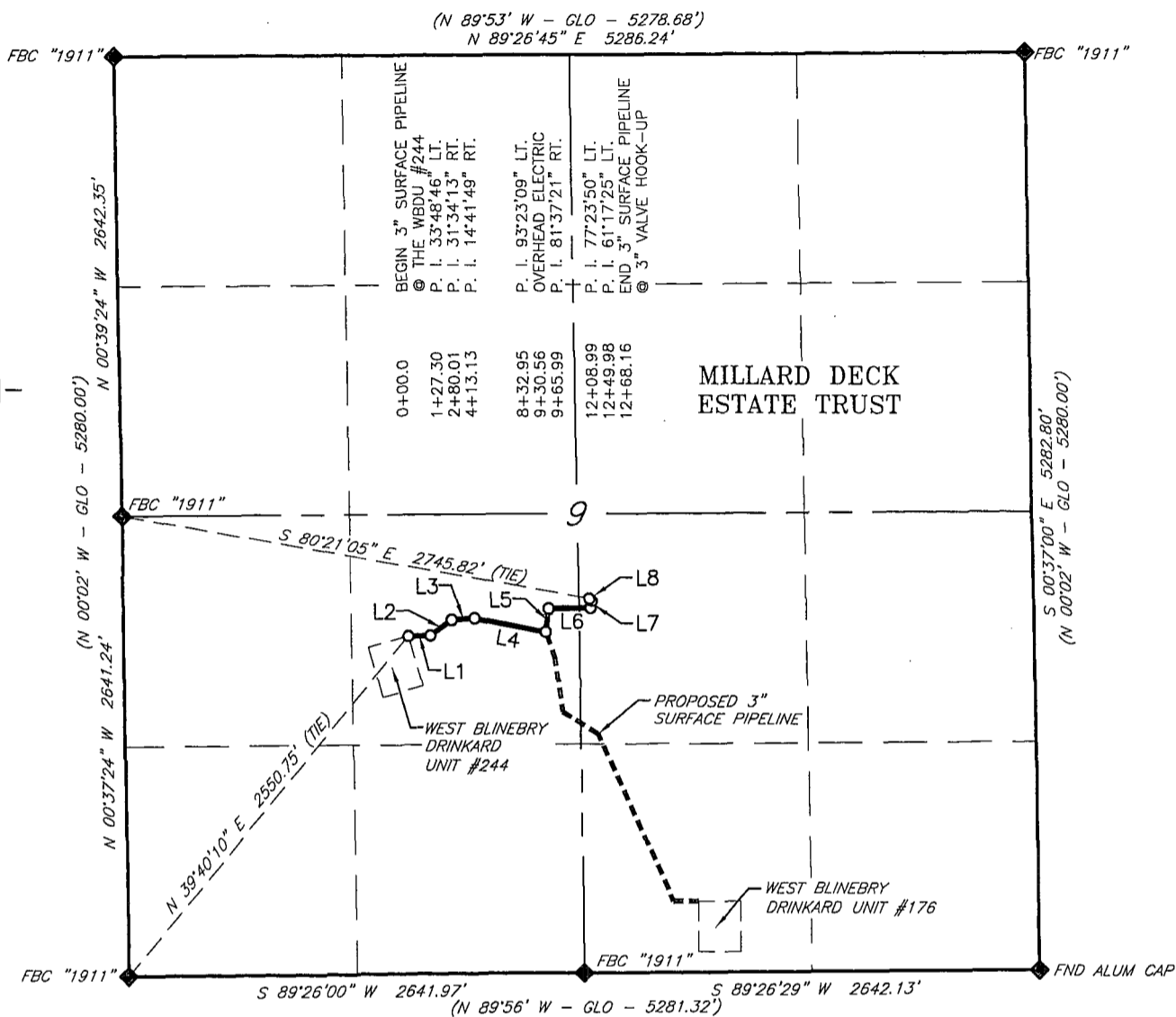
NO.	REVISION	DATE
JOB NO.: LS1601036		
DWG. NO.: 1601036LVM		

308 W. BROADWAY ST., HOBBS, NM 88240 (575) 964-8200

SCALE: 1000'
DATE: 1-28-2016
SURVEYED BY: BK/CG
DRAWN BY: LPS
APPROVED BY: RMH
SHEET : 1 OF 1

Exhibit #1A

**APACHE CORPORATION**  
**PROPOSED 3" SURFACE PIPELINE**  
**FROM THE WEST BLINEBRY DRINKARD UNIT #244**  
**TO AN EXISTING 3" VALVE HOOK-UP**  
**SECTION 9, T21S, R37E,**  
**N. M. P. M., LEA CO., NEW MEXICO**



LINE TABLE		
LINE	BEARING	LENGTH
L1	N 87°58'16" E	127.30'
L2	N 54°09'30" E	152.71'
L3	N 85°43'43" E	133.12'
L4	S 79°34'28" E	419.82'
L5	N 07°02'23" E	133.04'
L6	N 88°39'44" E	243.00'
L7	N 11°15'54" E	40.99'
L8	N 50°01'31" W	18.18'

SCALE: 1" = 1000'

0 500' 1000'

BEARINGS ARE GRID NAD 27,  
 NM EAST  
 DISTANCES ARE HORIZ. GROUND.

**LEGEND**

( ) RECORD DATA - GLO

◆ FOUND MONUMENT  
 AS NOTED

— PROPOSED 3" SURFACE  
 PIPELINE

I, R. M. Howett, a N. M. Professional Surveyor, hereby certify that I prepared this plat from an actual survey made on the ground under my direct supervision, said survey and plat meet the Min. Stds. for Land Surveying in the State of N. M. and are true and correct to the best of my knowledge and belief.

*Robert M. Howett*

Robert M. Howett NM PS 19680



Firm No.: TX 10193838 NM 4655451

Copyright 2014 - All Rights Reserved

NO.	REVISION	DATE
JOB NO.: LS1601036		
DWG. NO.: 1601036-1		

RRC

308 W. BROADWAY ST., HOBBS, NM 88240 (575) 964-8200

SCALE: 1" = 1000'

DATE: 2-05-2016

SURVEYED BY: BC/HD

DRAWN BY: LPS

APPROVED BY: RMH

SHEET : 1 OF 2

**APACHE CORPORATION**  
**PROPOSED 3" SURFACE PIPELINE**  
**FROM THE WEST BLINEBRY DRINKARD UNIT #244**  
**TO AN EXISTING 3" VALVE HOOK-UP**  
**SECTION 9, T21S, R37E,**  
**N. M. P. M., LEA CO., NEW MEXICO**

DESCRIPTION

A strip of land 30 feet wide, being 1,268.16 feet or 76.858 rods in length, lying in Section 9, Township 21 South, Range 37 East, N. M. P. M., Lea County, New Mexico, being 15 feet left and 15 feet right of the following described survey of a centerline across lands of the Millard Deck Estate Trust:

BEGINNING at Engr. Sta. 0+00.00, a point in the Southwest quarter of Section 9, which bears N 39°40'10" E, 2,550.75 feet, from a brass cap, stamped "1911", found for the Southwest corner of Section 9;

Thence N 87°58'16" E, 127.30 feet, to Engr. Sta. 1+27.30, a P. I. of 33°48'46" left;

Thence N 54°09'30" E, 152.71 feet, to Engr. Sta. 2+80.01, a P. I. of 31°34'13" right;

Thence N 85°43'43" W, 133.12 feet, to Engr. Sta. 4+13.13, a P. I. of 14°41'49" right;

Thence S 79°34'28" E, 419.82 feet, to Engr. Sta. 8+32.95, a P. I. of 93°23'09" left;

Thence N 07°02'23" E, 133.04 feet, to Engr. Sta. 9+65.99, a P. I. of 81°37'21" right;

Thence N 88°39'44" E, 243.00 feet, to Engr. Sta. 12+08.99, a P. I. of 77°23'50" left;

Thence N 11°15'54" E, 40.99 feet, to Engr. Sta. 12+49.98, a P. I. of 61°17'25" left;

Thence N 50°01'31" W, 18.18 feet, to Engr. Sta. 12+68.16, the End of Survey, a point in the Southwest quarter of Section 9, which bears S 80°21'05" E, 2,745.82 feet, from a brass cap, stamped "1911", found for the West quarter corner of Section 9.

Said strip of land contains 0.873 acres, more or less, and is allocated by forties as follows:

NE 1/4 SW 1/4	69.310 Rods	0.787 Acres
NW 1/4 SE 1/4	7.548 Rods	0.086 Acres

Firm No.: TX 10193838 NM 4655451

Copyright 2014 - All Rights Reserved



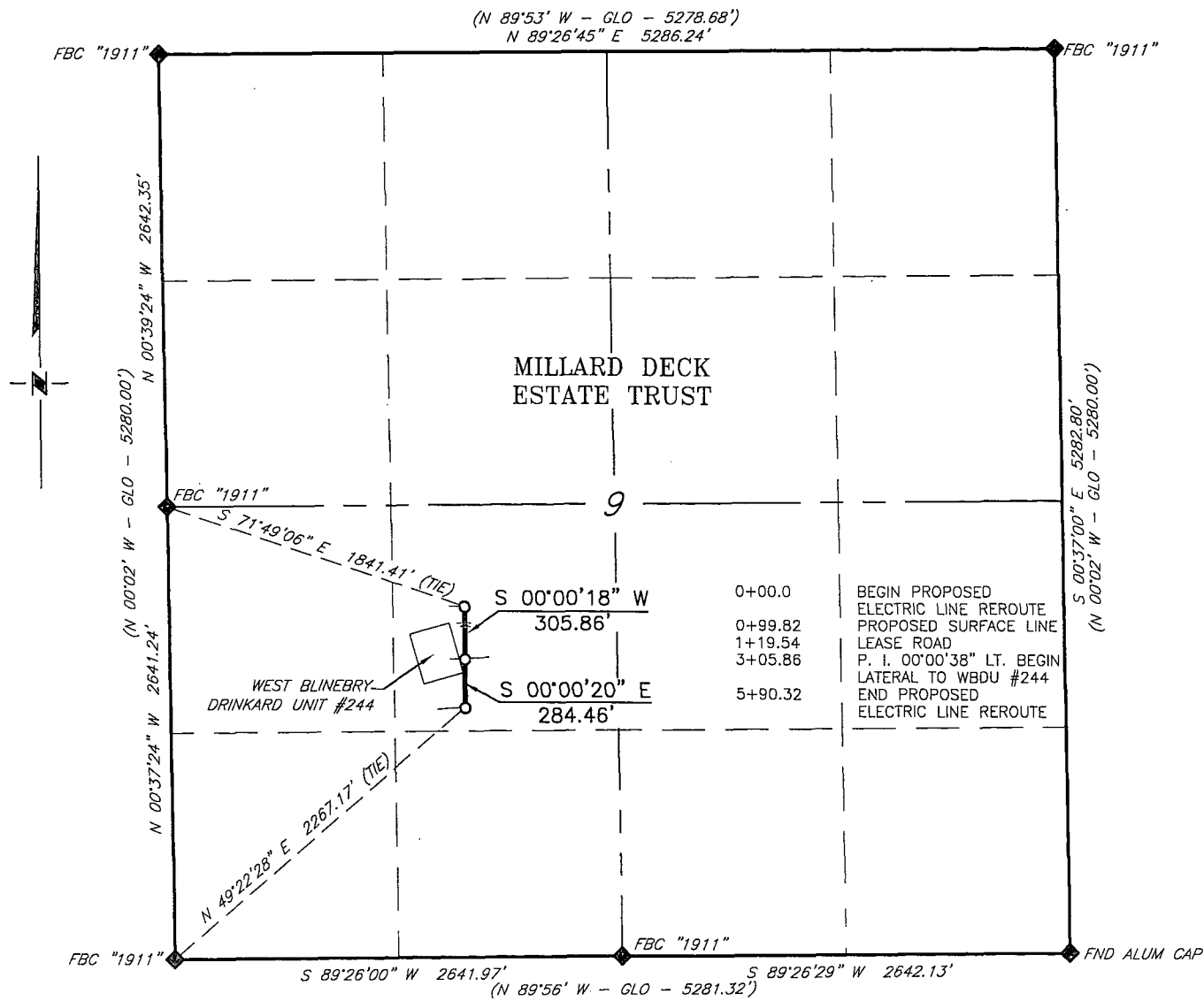
NO.	REVISION	DATE
JOB NO.: LS1601036		
DWG. NO.: 1601036-2		

308 W. BROADWAY ST., HOBBS, NM 88240 (575) 964-8200

SCALE: 1" = 1000'
DATE: 2-05-2016
SURVEYED BY: BC/HD
DRAWN BY: LPS
APPROVED BY: RMH
SHEET : 1 OF 2

Exhibit # 1B

**APACHE CORPORATION**  
**PROPOSED ELECTRIC LINE REROUTE**  
**FOR THE WEST BLINEBRY DRINKARD UNIT #244**  
**SECTION 9, T21S, R37E,**  
**N. M. P. M., LEA CO., NEW MEXICO**



**DESCRIPTION**

A strip of land 30 feet wide, being 590.32 feet or 35.777 rods in length, lying in Section 9, Township 21 South, Range 37 East, N. M. P. M., Lea County, New Mexico, being 15 feet left and 15 feet right of the following described survey of a centerline across lands of the Millard Deck Estate Trust:

BEGINNING at Engr. Sta. 0+00.00, a point in the Southwest quarter of Section 9, which bears S 71°49'06" E, 1,841.41 feet, from a brass cap, stamped "1911", found for the West quarter corner of Section 9;

Thence S 00°00'18" W, 305.86 feet, to Engr. Sta. 3+05.86, a P. I. of 00°00'38" left;

Thence S 00°00'20" E, 284.46 feet, to Engr. Sta. 5+90.32, the End of Survey, a point in the Southwest quarter of Section 9, which bears N 49°22'28" E, 2,267.17 feet, from a brass cap, stamped "1911", found for the Southwest quarter corner of Section 9.

Said strip of land contains 0.406 acres, more or less, and is allocated by forties as follows:

NE 1/4 SW 1/4                      35.777 Rods                      0.406 Acres

SCALE: 1" = 1000'  
 0                      500'                      1000'

BEARINGS ARE GRID NAD 27  
 NM EAST  
 DISTANCES ARE HORIZ. GROUND.

**LEGEND**

- ( ) RECORD DATA - GLO
- ◆ FOUND MONUMENT AS NOTED
- PROPOSED 3" SURFACE PIPELINE

I, R. M. Howett, a N. M. Professional Surveyor, hereby certify that I prepared this plat from an actual survey made on the ground under my direct supervision, said survey and plat meet the Min. Stds. for Land Surveying in the State of N. M. and are true and correct to the best of my knowledge and belief.

*Robert M. Howett*  
 Robert M. Howett                      NM PS 19680



Firm No.: TX 10193838 NM 4655451

Copyright 2014 - All Rights Reserved



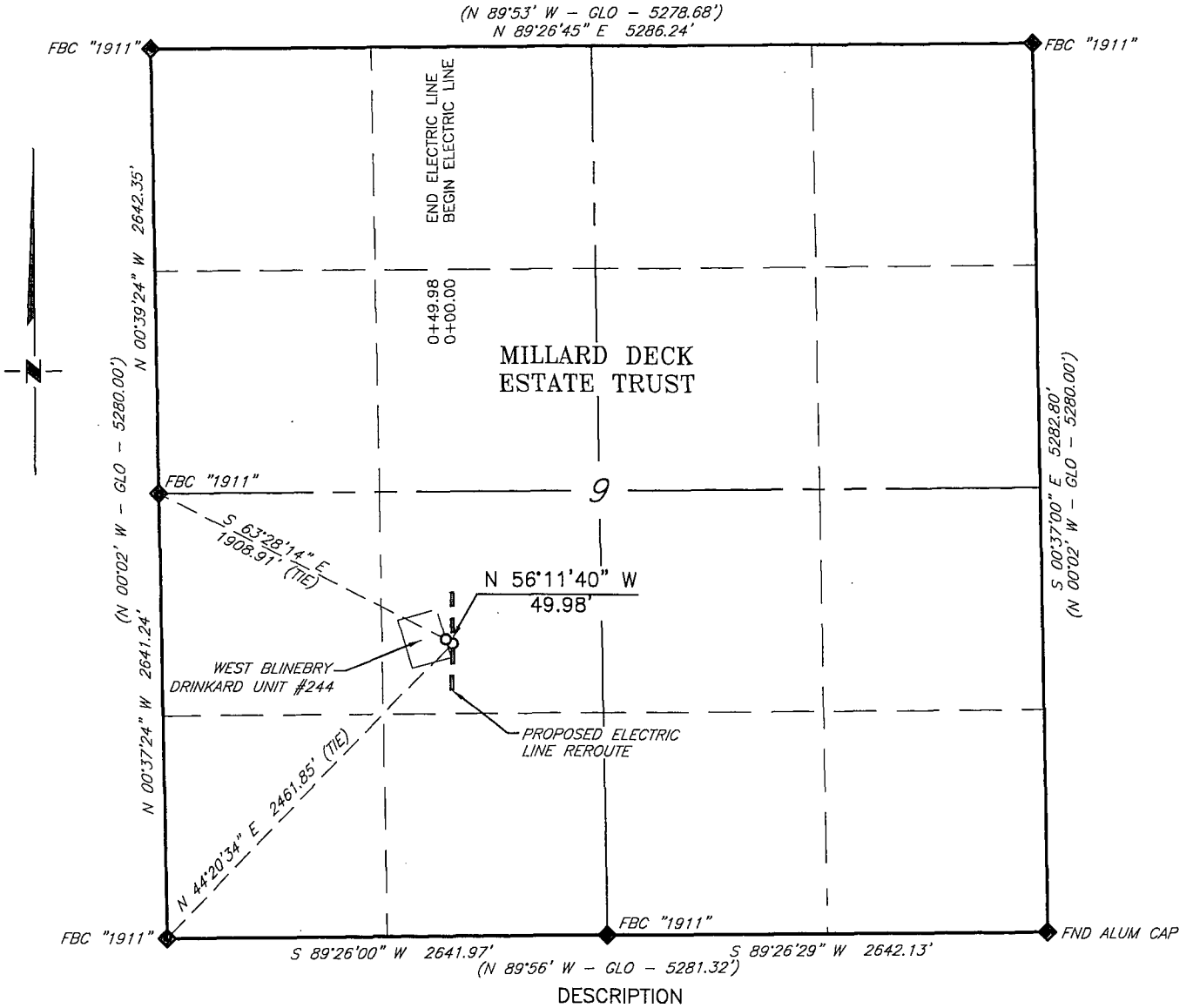
NO.	REVISION	DATE
JOB NO.: LS1601036		
DWG. NO.: 1601036-EL		

308 W. BROADWAY ST., HOBBS, NM 88240                      (575) 964-8200

SCALE: 1" = 1000'
DATE: 2-05-2016
SURVEYED BY: BC/HD
DRAWN BY: LPS
APPROVED BY: RMH
SHEET : 1 OF 1

Exhibit 1C

**APACHE CORPORATION  
PROPOSED ELECTRIC LINE LATERAL  
FOR THE WEST BLINEBRY DRINKARD UNIT #244  
SECTION 9, T21S, R37E,  
N. M. P. M., LEA CO., NEW MEXICO**



**DESCRIPTION**

A strip of land 30 feet wide, being 49.98 feet or 3.029 rods in length, lying in Section 9, Township 21 South, Range 37 East, N. M. P. M., Lea County, New Mexico, being 15 feet left and 15 feet right of the following described survey of a centerline across the lands of the Millard Deck Estate Trust:

BEGINNING at Engr. Sta. 0+00.00, a point in the Southwest quarter of Section 9, which bears N 44°20'34" E, 2,461.85 feet, from a brass cap, stamped "1911", found for the Southwest corner of Section 9;

Thence N 56°11'40" W, 49.98 feet, to Engr. Sta. 0+49.98, the End of Survey, a point in the Southwest quarter of Section 9, which bears S 63°28'14" E, 1,908.91 feet, from a brass cap, stamped "1911", found for the West quarter corner of Section 9.

Said strip of land contains 0.034 acres, more or less, and is allocated by forties as follows:

NE 1/4 SW 1/4                      3.029 Rods                      0.034 Acres

SCALE: 1" = 1000'  
0                      500'                      1000'

BEARINGS ARE GRID NAD 27  
NM EAST  
DISTANCES ARE HORIZ. GROUND.

**LEGEND**

- ( ) RECORD DATA - GLO
- ◆ FOUND MONUMENT AS NOTED
- PROPOSED ELECTRIC LINE

I, R. M. Howett, a N. M. Professional Surveyor, hereby certify that I prepared this plat from an actual survey made on the ground under my direct supervision, said survey and plat meet the Min. Stds. for Land Surveying in the State of N. M. and are true and correct to the best of my knowledge and belief.

*Robert M. Howett*  
Robert M. Howett                      NM PS 19680



Firm No.: TX 10193838 NM 4655451

Copyright 2014 - All Rights Reserved



308 W. BROADWAY ST., HOBBS, NM 88240 (575) 964-8200

NO.	REVISION	DATE
JOB NO.: LS1601036		
DWG. NO.: 1601036EL2		

SCALE: 1" = 1000'
DATE: 2-05-2016
SURVEYED BY: BC/HD
DRAWN BY: LPS
APPROVED BY: RMH
SHEET : 1 OF 2



# NM OCD OIL AND GAS MAP

New Mexico Oil Conservation Division

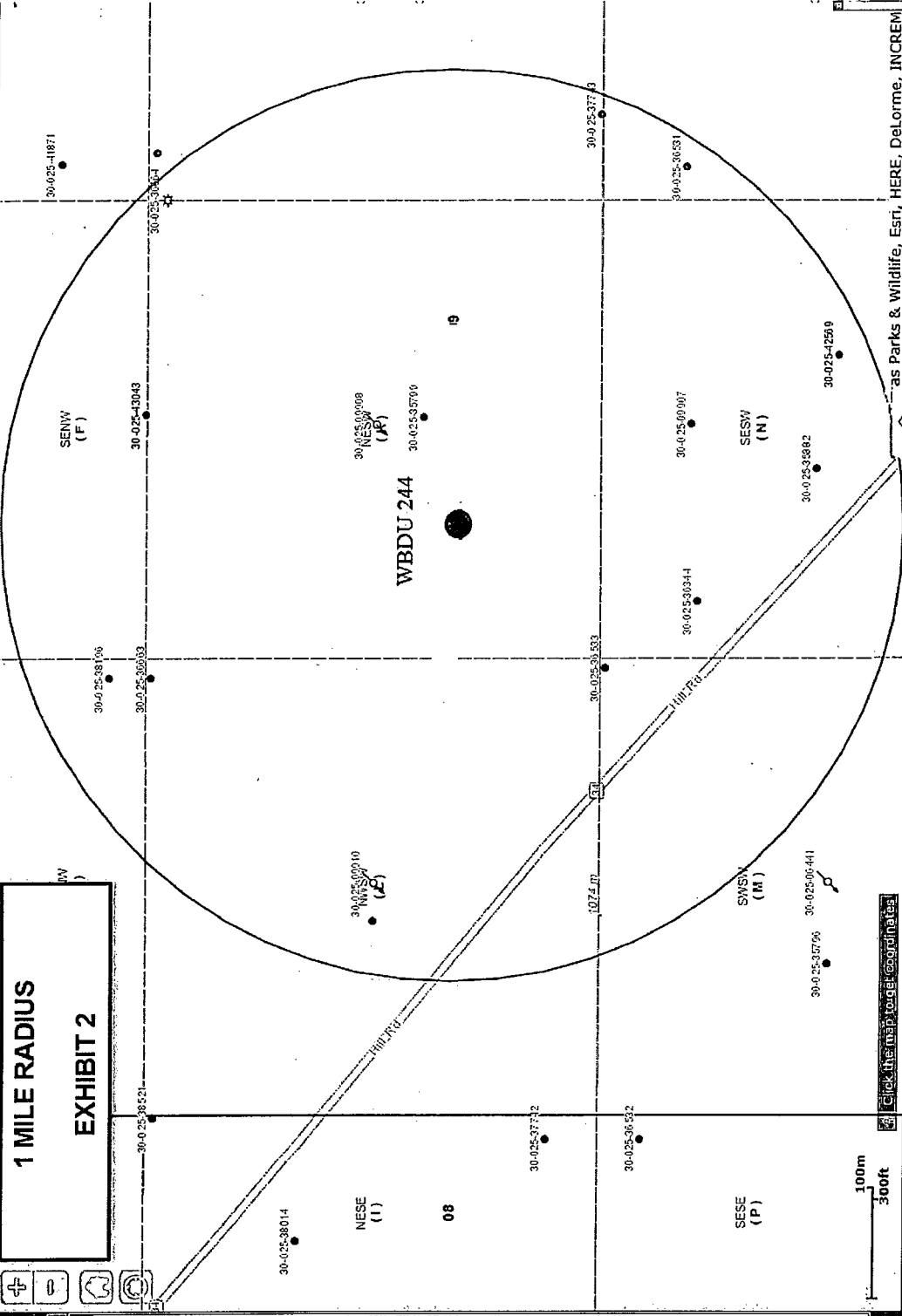


Layer List

- Miscellaneous
- \* CO2 Active
- \* CO2 Cancelled
- \* CO2, New
- \* CO2, Plugged
- \* CO2, Temporarily Abandoned
- ☆ Gas, Active
- ☆ Gas, Cancelled
- ☆ Gas, New
- ☆ Gas, Plugged
- ☆ Gas, Temporarily Abandoned
- ⌘ Injection, Active
- ⌘ Injection, Cancelled
- ⌘ Injection, New
- ⌘ Injection, Plugged
- ⌘ Injection, Temporarily Abandoned
- Oil, Active
- Oil, Cancelled
- Oil, New
- Oil, Plugged
- Oil, Temporarily Abandoned
- △ Salt Water Injection, Active
- △ Salt Water Injection, Cancelled
- △ Salt Water Injection, New
- △ Salt Water Injection, Plugged
- △ Salt Water Injection, Temporarily Abandoned
- Water, Active

**1 MILE RADIUS**

**EXHIBIT 2**



Click the map to get coordinates