

DISTRICT I
1825 N. French Dr., Hobbs, NM 88240

DISTRICT II
1301 W. Grand Avenue, Artesia, NM 88210

DISTRICT III
1000 Rio Brazos Rd., Aztec, NM 87410

DISTRICT IV
1220 S. St. Francis Dr., Santa Fe, NM 87505

State of New Mexico

Energy, Minerals & Natural Resources Department

OIL CONSERVATION DIVISION

1220 South St. Frances Dr.

Santa Fe, NM 87505

Form C-102

Revised October 12, 2005

Submit to Appropriate District Office

State Lease - 4 Copies

Fee Lease - 3 Copies

HOBBS OGD

MAY 09 2016

RECEIVED

☐ AMENDED REPORT

WELL LOCATION AND ACREAGE DEDICATION PLAT

API Number 30-025-43230	Pool Code 96637	Pool Name TEAS; Bone Springs, East
Property Code 302795	Property Name HAMON FED COM A	Well Number 5H
OGRID No. 240974	Operator Name LEGACY RESERVES OPERATING LP	Elevation 3610'

Surface Location

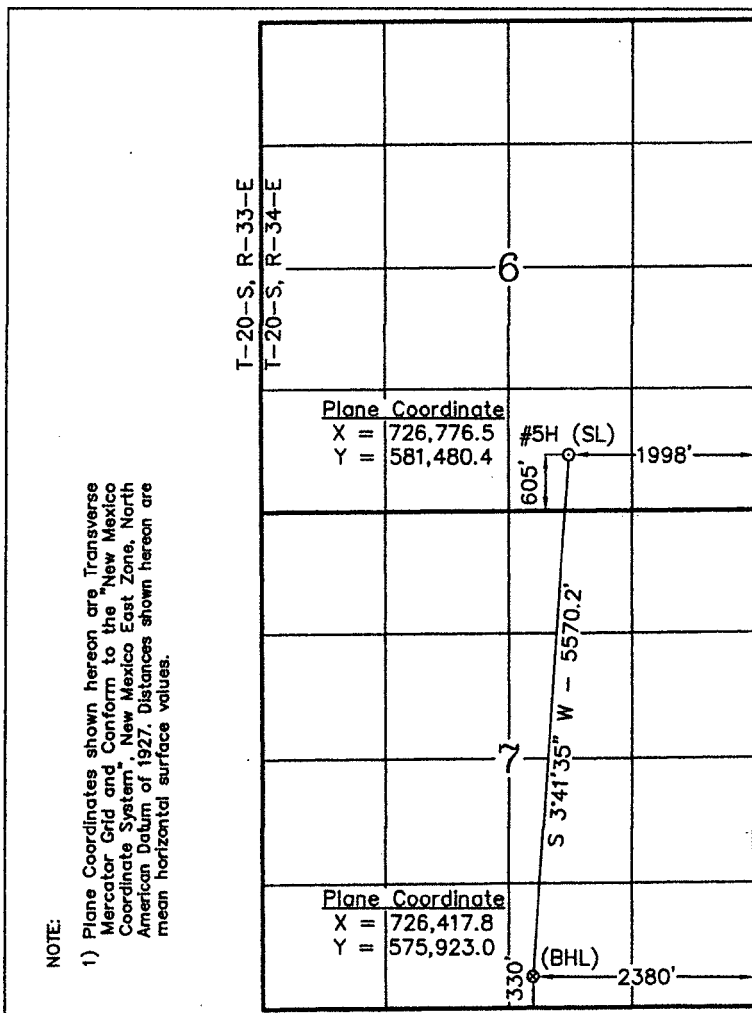
UL or lot No.	Section	Township	Range	Lot Idn	Feet from the	North/South line	Feet from the	East/West line	County
0	6	20 S	34 E		605	SOUTH	1998	EAST	LEA

Bottom Hole Location If Different From Surface

UL or lot No.	Section	Township	Range	Lot Idn	Feet from the	North/South line	Feet from the	East/West line	County
0	7	20 S	34 E		330	SOUTH	2380	EAST	LEA

Dedicated Acres 160	Joint or Infill	Consolidation Code	Order No.
------------------------	-----------------	--------------------	-----------

NO ALLOWABLE WILL BE ASSIGNED TO THIS COMPLETION UNTIL ALL INTERESTS HAVE BEEN CONSOLIDATED OR A NON-STANDARD UNIT HAS BEEN APPROVED BY THE DIVISION



OPERATOR CERTIFICATION

I hereby certify the information contained herein is true and complete to the best of my knowledge and belief, and that this organization either owns a working interest or leased mineral interest in the land including the proposed bottom hole location or has a right to drill this well at this location pursuant to a contract with an owner of such a mineral or working interest, or to a voluntary pooling agreement or a compulsory pooling order heretofore entered by the division.

Signature
Barry W. Hunt
Date
8/5/15
Printed Name
Barry W. Hunt

SURVEYOR CERTIFICATION

I hereby certify that the well location shown on this plat was plotted from field notes of actual surveys made by me or under my supervision and that the same is true and correct to the best of my belief.

Date of Survey
June 29
Signature & Seal of Professional Surveyor
W.O. Num. 2015-0491
Certificate No. MACON McDONALD 12185

Scale
1" = 2000'

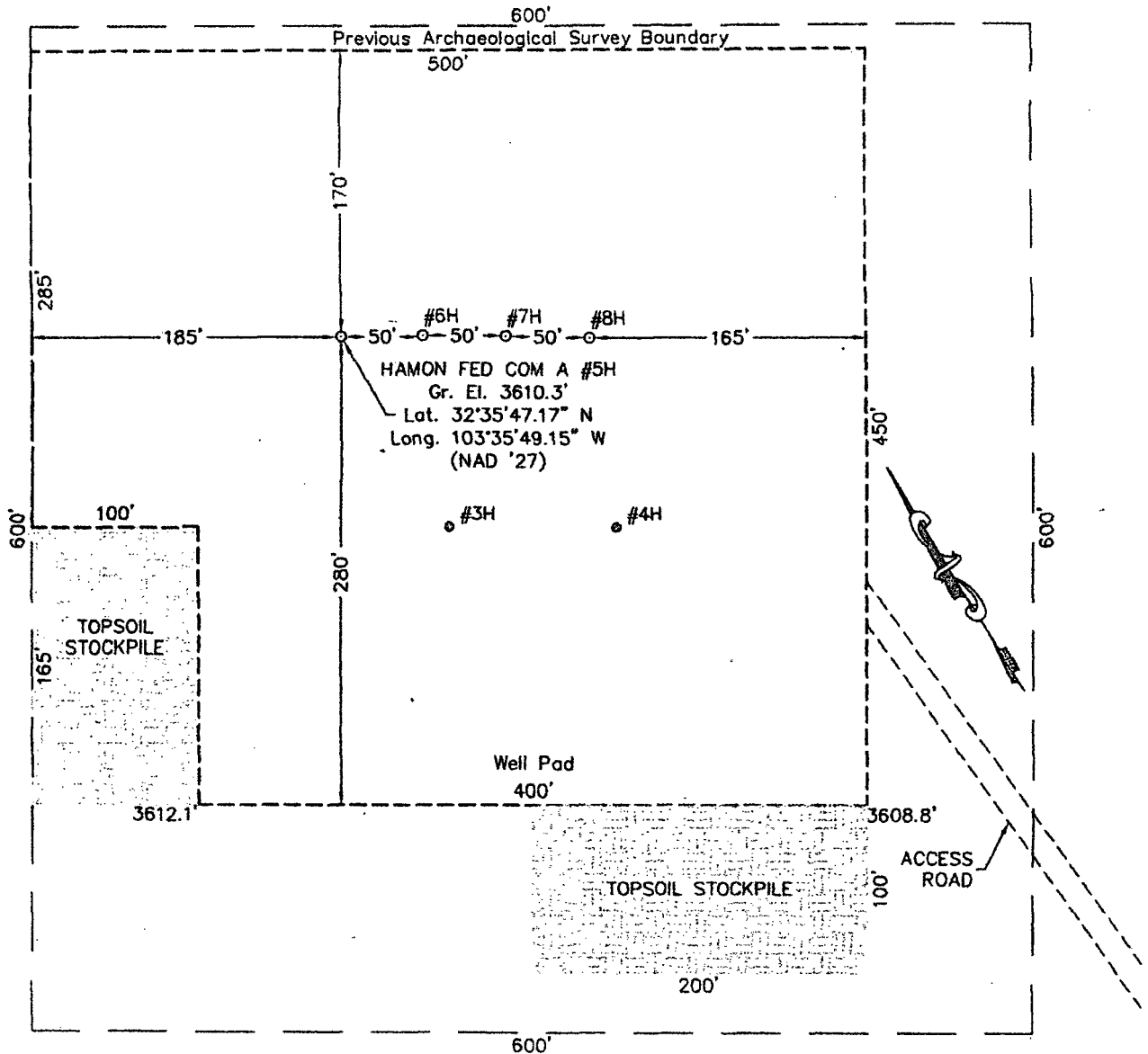
MAY 12 2016

SECTION 6, TOWNSHIP 20 SOUTH, RANGE 34 EAST, N.M.P.M.

LEA COUNTY

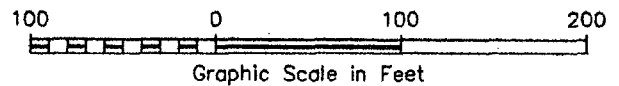
NEW MEXICO

L-2015-0491-A



DRIVING DIRECTIONS

FROM THE INTERSECTION OF STATE HIGHWAY 18 AND U.S. HIGHWAY 62-180 IN HOBBS, NEW MEXICO, GO WEST AND SOUTHWEST ON U.S. HIGHWAY 62-180 28.5 MILES TO LEASE ROAD ON SOUTH (LEFT) SIDE OF THE HIGHWAY, THEN GO SOUTH 0.9 MILE TO ANOTHER LEASE ROAD ON THE NORTH (LEFT) SIDE OF THE ROAD, THEN GO NORTH 0.7 MILE TO A POINT APPROXIMATELY 160 FEET EAST OF THE PROPOSED LOCATION.



LEGACY RESERVES OPERATING LP

HAMON FED COM A #5H

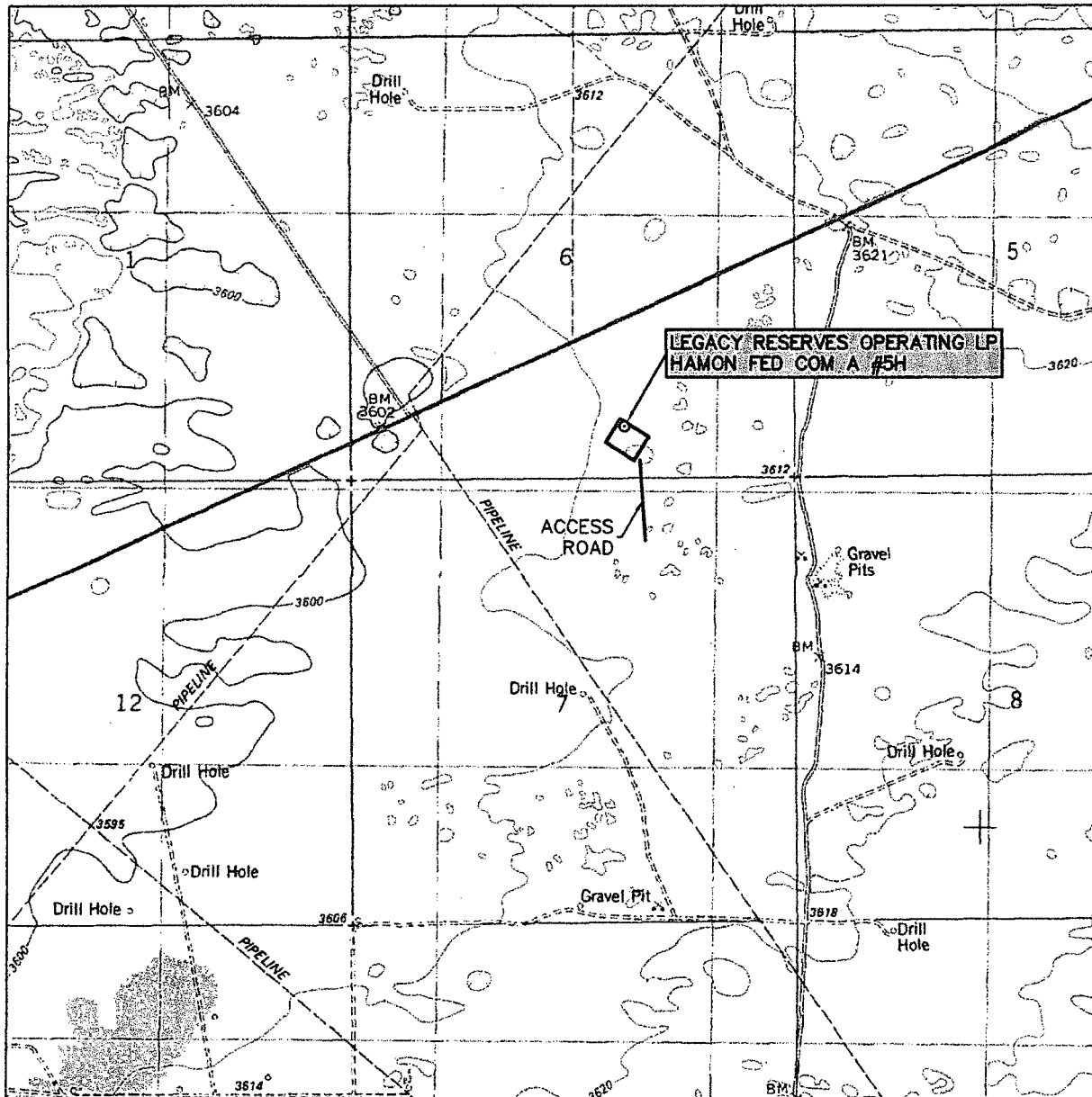
Located 605' FSL & 1998' FEL, Section 6
Township 20 South, Range 34 East, N.M.P.M.
Lea County, New Mexico



FIRM REGISTRATION NUMBER: 100682-00
110 W. LOUISIANA, STE. 110
MIDLAND TEXAS, 79701
(432) 687-0865 - (432) 687-0868 FAX

Drawn By: LVA / SC	Date: July 15, 2015
Scale: 1" = 100'	Field Book: 559 / 58-59
Revision Date: 8-21-2015	Quadrangle: Lea
W.O. No: 2015-0491	Dwg. No.: L-2015-0491-A

LOCATION VERIFICATION MAP



SCALE: 1" = 2000'

CONTOUR INTERVAL:
LEA - 10'

SEC. 6 TWP. 20-S RGE. 34-E

SURVEY N.M.P.M.

COUNTY LEA

DESCRIPTION 605' FSL & 1998' FEL

ELEVATION 3610'

OPERATOR LEGACY RESERVES OPERATING LP

LEASE LEA UNIT

U.S.G.S. TOPOGRAPHIC MAP

LEA



FIRM REGISTRATION NUMBER: 100682-00
110 W. LOUISIANA, STE. 110
MIDLAND TEXAS, 79701
(432) 687-0865 - (432) 687-0868 FAX

Exhibit A

Access

2.125" = 1 mile

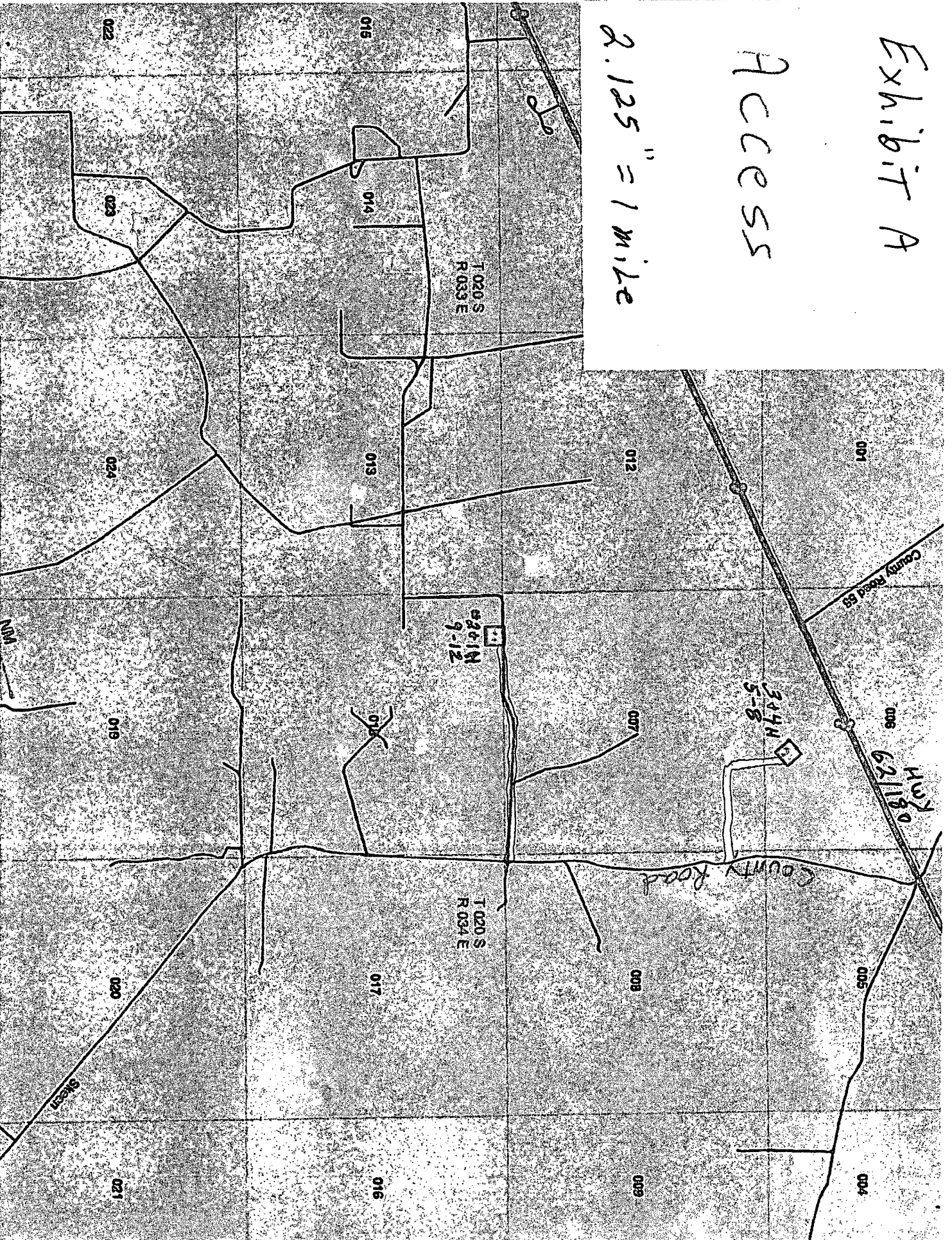


Exhibit B

5 H

2.125" = 1 mile

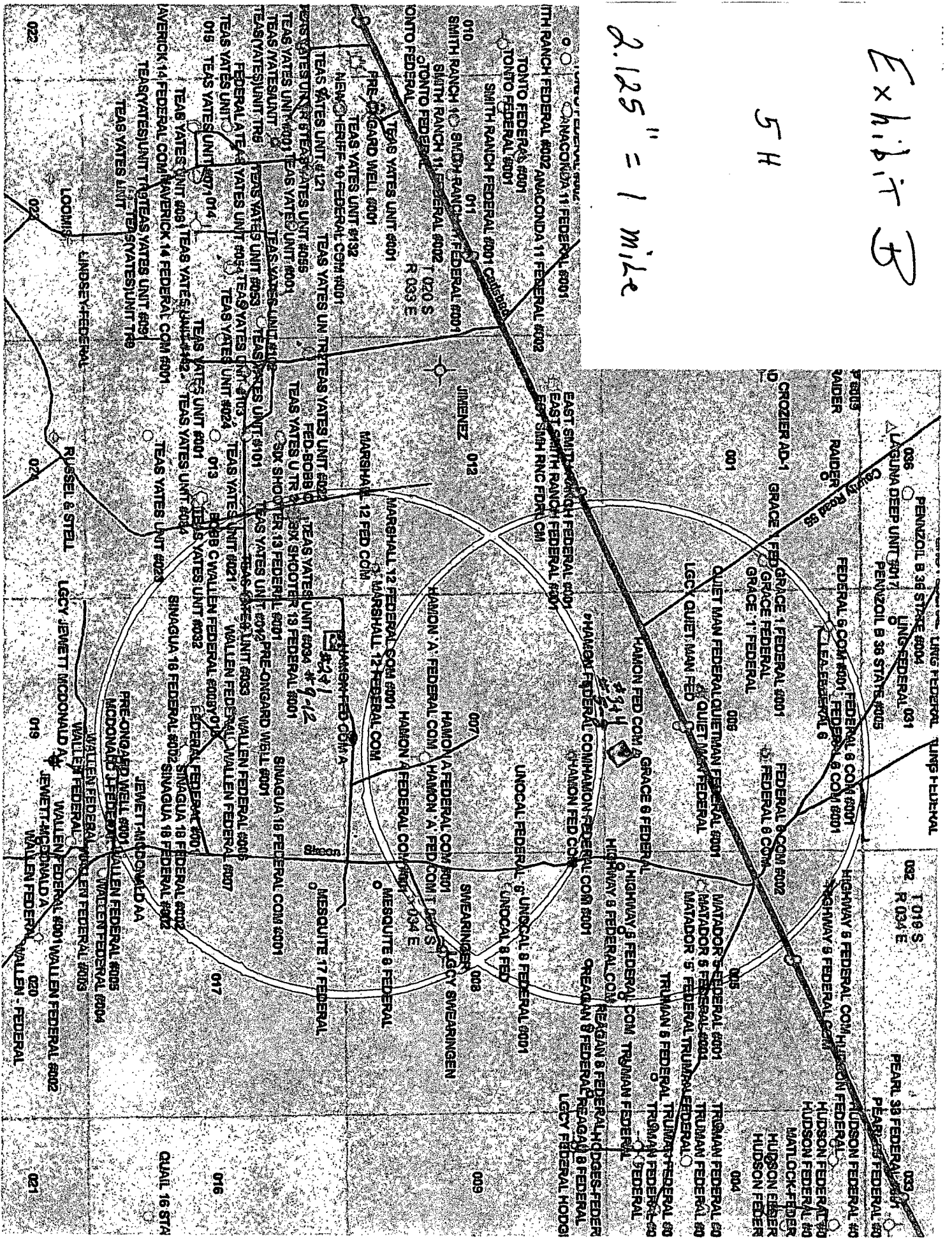


Exhibit E

Flowline

2.125" = 1 mile

