

UNITED STATES  
DEPARTMENT OF THE INTERIOR  
BUREAU OF LAND MANAGEMENT**Carlsbad Field Office**  
**OCD Hobbs**  
FORM APPROVED  
NO. 1004-0135  
Expires: July 31, 2010  
Serial No.  
NMNM68821**SUNDRY NOTICES AND REPORTS ON WELLS**  
*Do not use this form for proposals to drill or to re-enter an abandoned well. Use form 3160-3 (APD) for such proposals.***SUBMIT IN TRIPLICATE - Other instructions on reverse side.**

1. Type of Well <input type="checkbox"/> Oil Well <input checked="" type="checkbox"/> Gas Well <input type="checkbox"/> Other <b>Chercon</b>		6. If Indian, Allottee or Tribe Name
2. Name of Operator <b>CHESAPEAKE OPERATING INC*</b> Contact: CINDY H MURILLO E-Mail: CHERRAMURILLO@CHEVRON.COM		7. If Unit or CA/Agreement, Name and/or No.
3a. Address OKLAHOMA CITY, OK 73154-0496	3b. Phone No. (include area code) Ph: 575-263-0431 Fx: 575-263-0445	8. Well Name and No. PALOMA 30 FEDERAL 2
4. Location of Well (Footage, Sec., T., R., M., or Survey Description) Sec 30 T23S R34E NWSE 2430FSL 2420FEL 32.275056 N Lat, 103.508441 W Lon		9. API Well No. 30-025-37413-00-S2
		10. Field and Pool, or Exploratory WC-025 G08 S233430J
		11. County or Parish, and State LEA COUNTY, NM

**12. CHECK APPROPRIATE BOX(ES) TO INDICATE NATURE OF NOTICE, REPORT, OR OTHER DATA**

TYPE OF SUBMISSION	TYPE OF ACTION			
<input checked="" type="checkbox"/> Notice of Intent	<input type="checkbox"/> Acidize	<input type="checkbox"/> Deepen	<input type="checkbox"/> Production (Start/Resume)	<input type="checkbox"/> Water Shut-Off
<input type="checkbox"/> Subsequent Report	<input type="checkbox"/> Alter Casing	<input type="checkbox"/> Fracture Treat	<input type="checkbox"/> Reclamation	<input type="checkbox"/> Well Integrity
<input type="checkbox"/> Final Abandonment Notice	<input type="checkbox"/> Casing Repair	<input type="checkbox"/> New Construction	<input type="checkbox"/> Recomplete	<input type="checkbox"/> Other
	<input type="checkbox"/> Change Plans	<input type="checkbox"/> Plug and Abandon	<input checked="" type="checkbox"/> Temporarily Abandon	
	<input type="checkbox"/> Convert to Injection	<input type="checkbox"/> Plug Back	<input type="checkbox"/> Water Disposal	

13. Describe Proposed or Completed Operation (clearly state all pertinent details, including estimated starting date of any proposed work and approximate duration thereof. If the proposal is to deepen directionally or recompleate horizontally, give subsurface locations and measured and true vertical depths of all pertinent markers and zones. Attach the Bond under which the work will be performed or provide the Bond No. on file with BLM/BIA. Required subsequent reports shall be filed within 30 days following completion of the involved operations. If the operation results in a multiple completion or recompleation in a new interval, a Form 3160-4 shall be filed once testing has been completed. Final Abandonment Notices shall be filed only after all requirements, including reclamation, have been completed, and the operator has determined that the site is ready for final inspection.)

CHEVRON USA INC IS RESPECTFULLY REQUESTING TO TEMPORARILY ABANDON THE ABOVE SUBJECT WELL. WE WOULD LIKE TO REQUEST THE MAXIMUM TERM POSSIBLE. THE WELL IS A CYCLIC, FLOWING PRODUCER THAT HAS TO BE SHUT IN TO ALLOW PRESSURE BUILD UP TO ENTER THE SALES LINE AND LAST PRODUCED ON SEPT 1, 2015. A RECENTLY COMPLETED ENGINEERING AND FINANCIAL REVIEW DETERMINED THAT IT IS NOT CURRENTLY ECONOMICAL TO EITHER RETURN THIS WELL TO PRODUCTION OR TO RECOMPLEATE UPHOLE. CHEVRON PREFERENCES TO TA RATHER THAN PA, IN ORDER TO LEAVE THE WELLBORE IN A SAFE BUT USABLE CONDITION WHILE LOOKING FOR DIVESTMENT, FARM OUT OR TRADE OPPORTUNITIES.

PLEASE SEE TA PROCEDURE BELOW:

MIRU

PULL TUBING AND PACKER ASSEMBLY

RUN BACK IN HOLE WITH TUBING AND SPOT 2% KCL WITH CORRISION INHIBITOR FROM CURRENT PBD TO SURFACE.

Accepted for record

NMOCB 8/1/16

MAB 8/18/16

14. I hereby certify that the foregoing is true and correct. Electronic Submission #341041 verified by the BLM Well Information System For CHESAPEAKE OPERATING INC, sent to the Hobbs Committed to AFMSS for processing by PRISCILLA PEREZ on 06/06/2016 (16PP07345E)		<b>NM OIL CONSERVATION</b> ARTESIA DISTRICT JUL 29 2016
Name (Printed/Typed) CINDY H MURILLO	Title PERMITTING SPECIALIST	
Signature (Electronic Submission)	Date 06/03/2016	

**THIS SPACE FOR FEDERAL OR STATE OFFICE USE****RECEIVED**

Approved By <b>DENIED</b>	DUNCAN WHITLOCK Title TECHNICAL LPET	Date 07/21/2016
Conditions of approval, if any, are attached. Approval of this notice does not warrant or certify that the applicant holds legal or equitable title to those rights in the subject lease which would entitle the applicant to conduct operations thereon.		
Office Hobbs		

Title 18 U.S.C. Section 1001 and Title 43 U.S.C. Section 1212, make it a crime for any person knowingly and willfully to make to any department or agency of the United States any false, fictitious or fraudulent statements or representations as to any matter within its jurisdiction.

**\*\* BLM REVISED \*\* BLM REVISED \*\* BLM REVISED \*\* BLM REVISED \*\* BLM REVISED \*\***

**Additional data for EC transaction #341041 that would not fit on the form**

**32. Additional remarks, continued**

POOH WITH TUBING AND LAY DOWN  
RU WIRELINE AND SET 7" CIBP AT 11,500' ( 48' ABOVE TOP OF WOLFCAMP PERFS)  
DUMP BALL 35' OF CEMENT ON TOP OF CIBP  
PRESSURE TEST TO 550 PSI FOR 30 MINUTES AFTER GIVING BLM REP 48 HR NOTICE.

PLEASE FIND ATTACHED WELLBORE DIAGRAMS.

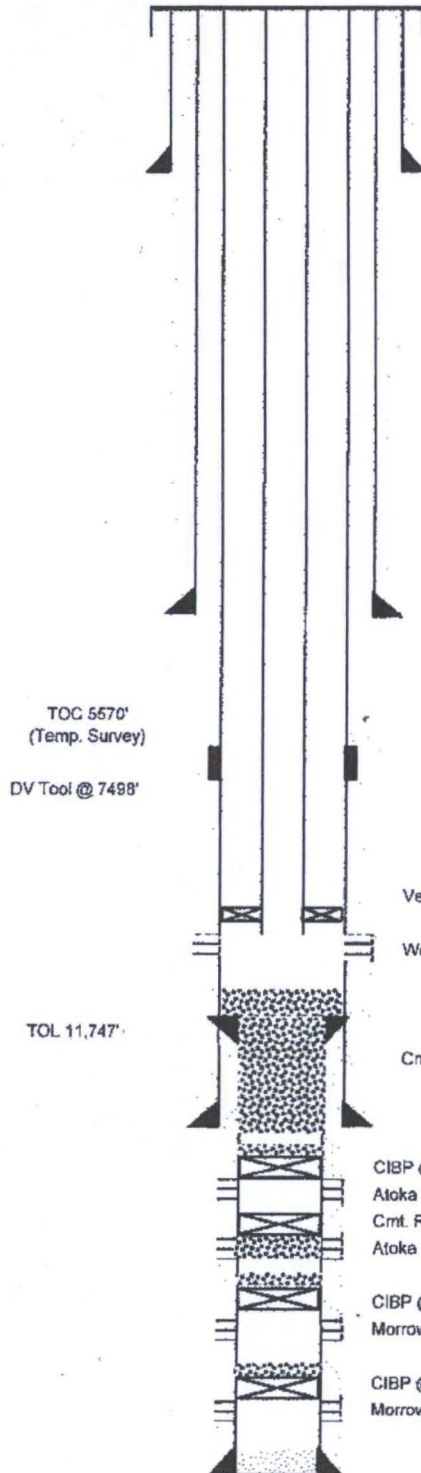


# CURRENT WELLBORE DIAGRAM

Lease Name: Paloma 30 Fed  
 Well #: 2  
 Surf. Loc.: 2430' FSL & 2420' FEL  
 Bottom Loc.: Same  
 Sec.: 30  
 Township: 23S  
 Range: 34E

Field: Wildcat  
 Reservoir: Wolfcamp  
 GE: 3608'  
 KB: 3634'  
 DF:  
 Status: inactive Gas Well

API #: 30-025-37413  
 CHEVNO: JJ9802  
 Cost Center: UCLG92510  
 Spud Date: 10/18/2005  
 Comp. Date: 12/15/2005  
 County: Lea  
 State: New Mexico



PBTD: 13,823'  
 TD: 13,870'

Hole Size: 17-1/2"  
 Csg. Size: 13-3/8", 48# H-40  
 Set @: 870'  
 Sxs. Cmt.: 860  
 TOC @: Surface  
 Circ: Y/N: N

## Tubing Detail - 3/2012

355 Jts. 2-7/8", 6.5# L-80 Tubing  
 On-Off Tool w/ 'X' Profile  
 VersaSet PLT V.2 Packer @ 11,444'  
 1 Pup Jt. 2-7/8", 6.5# L-80 Tubing (10')  
 Seat Nipple @ 11,461'  
 EOT @ 11,475'

Hole Size: 12-1/4"  
 Csg. Size: 9-5/8", 40# J-55  
 Set @: 5085'  
 Sxs. Cmt.: 1575  
 TOC @: Surface  
 Circ: Y/N: Y

Hole Size: 8-3/4"  
 Csg. Size: 7", 26# P-110  
 Set @: 11,974'  
 Sxs. Cmt.: 1265  
 TOC @: 5570'  
 Circ: Y/N: N

Hole Size: 6-1/8"  
 Liner. Size: 4 1/2", 13.5# P-110  
 Set @: 11,747'-13,868'  
 Sxs. Cmt.: 180  
 TOC @: TOL 11,747'  
 Circ: Y/N:

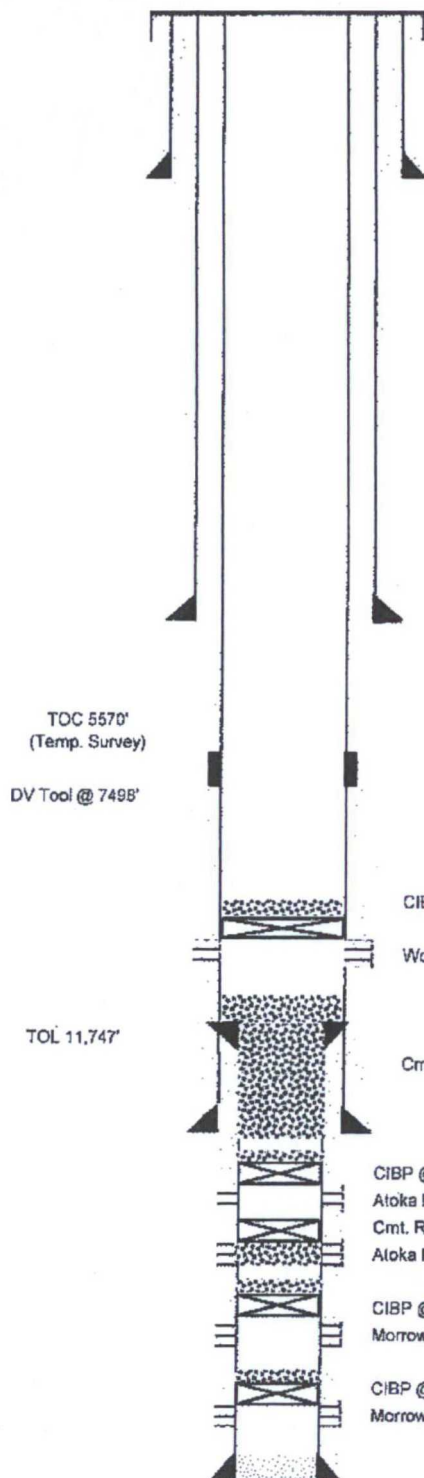
Created (By): 5/29/2016 (RJ DeBruin)  
 Updated (By):

# PROPOSED TA WELLBORE DIAGRAM

Lease Name: Paloma 30 Fed  
 Well #: 2  
 Surf. Loc.: 2430' FSL & 2420' FEL  
 Bottom Loc.: Same  
 Sec.: 30  
 Township: 23S  
 Range: 34E

Field: Wildcat  
 Reservoir: Wolfcamp  
 GE: 3608'  
 KB: 3634'  
 DF:   
 Status: Inactive Gas Well

API #: 30-025-37413  
 CHEVNO: JJ9802  
 Cost Center: UCLG92510  
 Spud Date: 10/18/2005  
 Comp. Date: 12/15/2005  
 County: Lea  
 State: New Mexico



Hole Size: 17-1/2"  
 Csg. Size: 13-3/8", 48# H-40  
 Set @: 870'  
 Sxs. Cmt.: 860  
 TOC @: Surface  
 Circ: Y/N: N

Hole Size: 12-1/4"  
 Csg. Size: 9-5/8", 40# J-55  
 Set @: 5085'  
 Sxs. Cmt.: 1575  
 TOC @: Surface  
 Circ: Y/N: Y

Hole Size: 8-3/4"  
 Csg. Size: 7", 26# P-110  
 Set @: 11,974'  
 Sxs. Cmt.: 1265  
 TOC @: 5570'  
 Circ: Y/N: N

Hole Size: 6-1/8"  
 Liner. Size: 4 1/2", 13.5# P-110  
 Set @: 11,747'-13,868'  
 Sxs. Cmt.: 180  
 TOC @: TOL 11,747'  
 Circ: Y/N:

PBTD: 13,823'  
 TD: 13,870'

Created (By): 5/29/2016 (RJ DeBruin)  
 Updated (By):



# OGOR.11: Production History for API 300253741300S2

PERIOD	STATUS	DAYS	OIL PROD	GAS PROD	WATER PROD	MMS IID	MMS OPERATOR
2016-05	GSI	0	0	0	0	NMNM68821	CHEVRON U S A INCORPORATED
2016-04	GSI	0	0	0	0	NMNM68821	CHEVRON U S A INCORPORATED
2016-03	GSI	0	0	0	0	NMNM68821	CHEVRON U S A INCORPORATED
2016-02	GSI	0	0	0	0	NMNM68821	CHEVRON U S A INCORPORATED
2016-01	GSI	0	0	0	0	NMNM68821	CHEVRON U S A INCORPORATED
2015-12	GSI	0	0	0	0	NMNM68821	CHEVRON U.S.A., INCORPORATED
2015-11	GSI	0	0	0	0	NMNM68821	CHEVRON U.S.A., INCORPORATED
2015-10	GSI	0	0	0	0	NMNM68821	CHEVRON U.S.A., INCORPORATED
2015-09	PGW	2	0	6	0	NMNM68821	CHEVRON U.S.A., INCORPORATED
2015-08	PGW	5	2	19	4	NMNM68821	CHEVRON U.S.A., INCORPORATED
2015-07	GSI	0	0	0	0	NMNM68821	CHEVRON U.S.A., INCORPORATED
2015-06	PGW	2	1	0	0	NMNM68821	CHEVRON U.S.A., INCORPORATED
2015-05	GSI	0	0	0	0	NMNM68821	CHEVRON U.S.A., INCORPORATED
2015-04	GSI	0	0	0	0	NMNM68821	CHEVRON U.S.A., INCORPORATED
2015-03	GSI	0	0	0	0	NMNM68821	CHEVRON U.S.A., INCORPORATED
2015-02	GSI	0	0	0	0	NMNM68821	CHEVRON U.S.A., INCORPORATED
2015-01	GSI	0	0	0	0	NMNM68821	CHEVRON U.S.A., INCORPORATED
2014-12	PGW	30	7	0	0	NMNM68821	CHEVRON U.S.A., INCORPORATED
2014-11	PGW	30	0	2	0	NMNM68821	CHEVRON U.S.A., INCORPORATED
2014-10	PGW	23	2	0	0	NMNM68821	CHEVRON U.S.A., INCORPORATED
2014-09	PGW	3	0	46	25	NMNM68821	CHEVRON U.S.A., INCORPORATED
2014-08	PGW	11	3	41	0	NMNM68821	CHEVRON U.S.A., INCORPORATED
2014-07	PGW	31	5	42	89	NMNM68821	CHEVRON U.S.A., INCORPORATED
2014-06	PGW	20	12	14	0	NMNM68821	CHEVRON U.S.A., INCORPORATED
2014-05	PGW	28	47	63	126	NMNM68821	CHEVRON U.S.A., INCORPORATED
2014-04	PGW	30	13	0	55	NMNM68821	CHEVRON U.S.A., INCORPORATED
2014-03	PGW	31	18	126	164	NMNM68821	CHEVRON U.S.A., INCORPORATED
2014-02	PGW	28	5	0	37	NMNM68821	CHEVRON U.S.A., INCORPORATED
2014-01	PGW	20	14	11	11	NMNM68821	CHEVRON U.S.A., INCORPORATED
2013-12	PGW	17	85	151	8	NMNM68821	CHEVRON U.S.A., INCORPORATED
2013-11	PGW	10	38	185	30	NMNM68821	CHEVRON U.S.A., INCORPORATED
2013-10	PGW	31	37	9	15	NMNM68821	CHEVRON U.S.A., INCORPORATED
2013-09	PGW	30	73	154	37	NMNM68821	CHEVRON U.S.A., INCORPORATED
2013-08	PGW	31	97	339	27	NMNM68821	CHEVRON U.S.A., INCORPORATED
2013-07	PGW	31	80	418	18	NMNM68821	CHEVRON U.S.A., INCORPORATED
2013-06	PGW	29	115	391	91	NMNM68821	CHEVRON U.S.A., INCORPORATED
2013-05	PGW	26	100	314	140	NMNM68821	CHEVRON U.S.A., INCORPORATED
2013-04	PGW	30	124	453	85	NMNM68821	CHEVRON U.S.A., INCORPORATED
2013-03	PGW	31	132	482	88	NMNM68821	CHEVRON U.S.A., INCORPORATED



United States Department of the Interior  
BUREAU OF LAND MANAGEMENT  
Carlsbad Field Office  
620 E. Greene St.  
Carlsbad, New Mexico 88220  
Tel. (505) 234-597  
Fax (505) 234-5927



### Request TA of Well on Federal Lands

**Chevron USA Incorporated**  
**Paloma 30 Federal #2**  
3002537413, Lease-NM68821

As stated on your Sundry request the above well is Shut-in (SI). The Bureau of Land Management (BLM) definition of a shut-in well is a completion that is physically and mechanically **capable of production in paying quantities or capable of service use**. 43 CFR 3162.3-4 (C) requires that wells incapable of production in paying quantities be promptly plugged and abandoned and requires approval for any well temporarily abandoned for more than 30 days.

As stated on your sundry "that it is not economical to continue to produce or to recomplete uphole".

**Your Sundry Notice is being Denied**

Submit Sundry Notice NOI to P&A within 30 days or by 8/22/2016

JDW 7/21/16