

R 32 E

Sec. 14

Bureau of Land Management

Sec. 13

Bureau of Land Management

T  
26  
S

Sec. 23

Bureau of Land Management

Sec. 24

Bureau of Land Management

Sec. 25

Bureau of Land Management

Existing  
34" Dia. Draw  
13 SWD No. 1  
Drill Site

Existing 43' PL R-0-W

Existing Lease Road

60' PL R-0-W

Proposed  
Fence Pond

Existing  
Fence Line

Proposed  
Temporary  
Water Line  
+7,308.22'

Proposed  
Facility Park

Proposed  
Flowline  
+7,497.22'

Proposed Pad 25 Access Road  
(SD WE 23 Fed P25 1H-0H Wells)

Existing Lease Road

Proposed Salado Draw  
Pad 24  
(SD WE 24 Fed P24  
5H-7H Wells)

Proposed Salado Draw  
Pad 23  
(SD WE 24 Fed P23  
1H-0H Wells)

Scale: 1" = 1000'

DETAIL

1000' 0 500' 1000'

CHEVRON U.S.A. INC.  
WORK AREA DETAIL FOR THE  
SD WE 24 FED P24 5H-7H WELLS  
SECTIONS 23, 24 & 25, T26S-R32E  
LEA COUNTY, NEW MEXICO

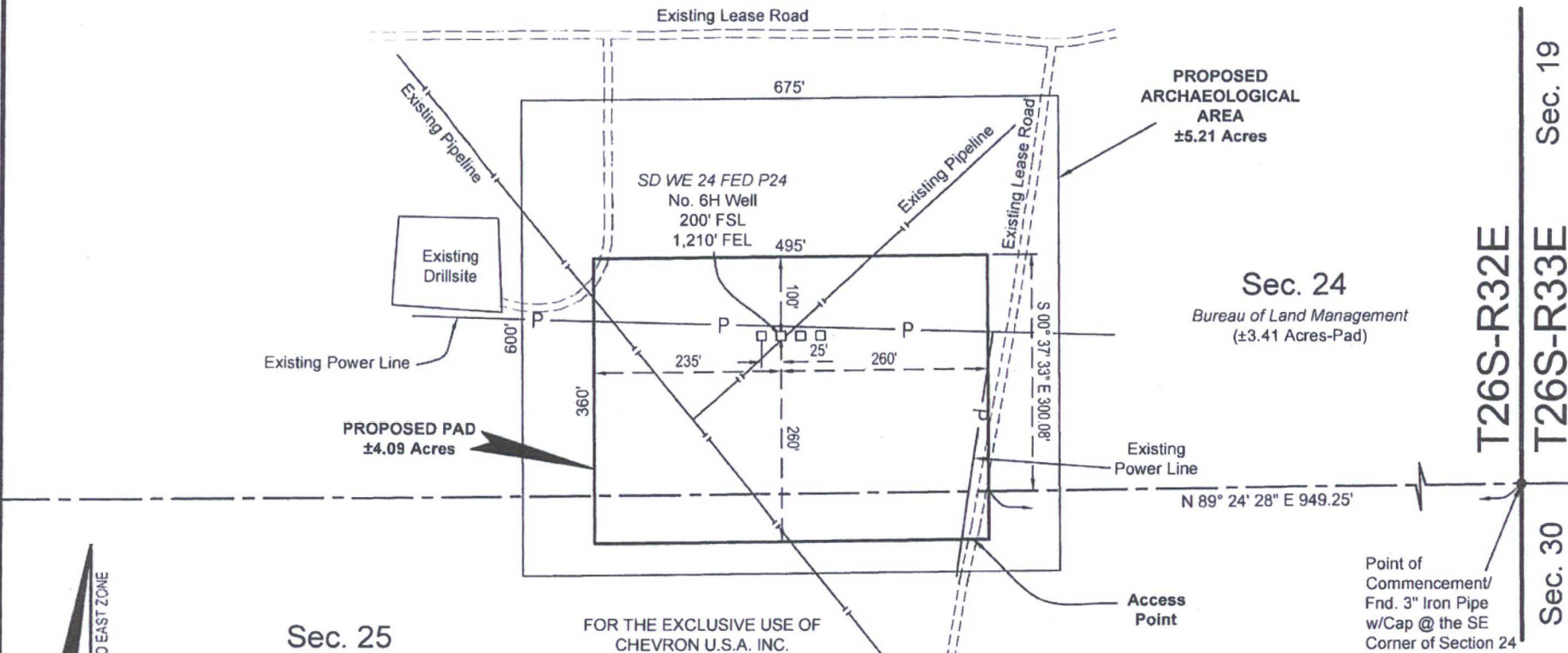


C. H. Fenstermaker & Associates, L.L.C.  
135 Regency Sq. Lafayette, LA 70508  
Ph. 337-237-2200 Fax. 337-232-3299  
www.fenstermaker.com

DRAWN BY: VHV		REVISIONS	
PROJ. MGR.: VHV	No. 1	DATE: 10/13/2016	REVISED BY: VHV
DATE: 08/02/2016	No. #	DATE:	REVISED BY:
FILENAME: T:\2015\2153305\DWG\SD WE 24 FED P24 5H-7H_AerialDetail.dwg			

SD WE 24 FED P24 NO. 6H WELL	NW ARCH. AREA CORNER	NE ARCH. AREA CORNER	SE ARCH. AREA CORNER	SW ARCH. AREA CORNER
X= 720,070 NAD 27	X= 719,742 NAD 27	X= 720,417 NAD 27	X= 720,422 NAD 27	X= 719,747 NAD 27
Y= 372,221	Y= 372,518	Y= 372,525	Y= 371,924	Y= 371,918
LAT. 32.021363	ELEVATION +3141' NAVD 88	ELEVATION +3140' NAVD 88	ELEVATION +3136' NAVD 88	ELEVATION +3136' NAVD 88
LONG 103.623262	NW PAD CORNER	NE PAD CORNER	SE PAD CORNER	SW PAD CORNER
X= 761,257 NAD83	X= 719,834 NAD 27	X= 720,329 NAD 27	X= 720,332 NAD 27	X= 719,837 NAD 27
Y= 372,278	Y= 372,319	Y= 372,324	Y= 371,964	Y= 371,959
LAT. 32.021488	ELEVATION +3139' NAVD 88	ELEVATION +3139' NAVD 88	ELEVATION +3137' NAVD 88	ELEVATION +3137' NAVD 88
LONG 103.623729				
ELEVATION +3137' NAVD 88				

LEGEND	
	Section Line
	Township/Range Line
	Existing Pipeline
	Existing Powerline
	Existing Lease Road
	End Monument



Scale: 1" = 200'

200' 0 100' 200'



C. H. Fenstermaker & Associates, L.L.C.  
135 Regency Sq. Lafayette, LA 70508  
Ph. 337-237-2200 Fax. 337-232-3299  
www.fenstermaker.com



Robert L. Lastrapes  
Registration No. 23006

# SURFACE USE PLAT

Page 1 of 2

**CHEVRON U.S.A. INC.**  
**PROPOSED PAD**  
**SD WE 24 FED P24 NO. 6H WELL**  
**SECTIONS 24 & 25, T26S-R32E**  
**LEA COUNTY, NEW MEXICO**

DRAWN BY: BOR		REVISIONS	
PROJ. MGR.: VHV	No.	DATE:	REVISED BY:
DATE: JUNE 21, 2016	No.	DATE:	REVISED BY:
FILENAME: T:\2015\2153307\DWG\SD WE 24 FED P24 6H_SUP.dwg			



NOTE:

Please be advised, that while reasonable efforts are made to locate and verify pipelines and anomalies using our standard pipeline locating equipment, it is impossible to be 100 % effective. As such, we advise using caution when performing work as there is a possibility that pipelines and other hazards, such as fiber optic cables, PVC pipelines, etc. may exist undetected on site.

NOTE:

Many states maintain information centers that establish links between those who dig (excavators) and those who own and operate underground facilities (operators). It is advisable and in most states, law, for the contractor to contact the center for assistance in locating and marking underground utilities. For guidance: New Mexico One Call System - [www.nmonecall.org](http://www.nmonecall.org)

DISCLAIMER: At this time, C. H. Fenstermaker & Associates, L.L.C. has not performed nor was asked to perform any type of engineering, hydrological modeling, flood plain, or "No Rise" certification analyses, including but not limited to determining whether the project will impact flood hazards in connection with federal/FEMA, state, and/or local laws, ordinances and regulations. Accordingly, Fenstermaker makes no warranty or representation of any kind as to the foregoing issues, and persons or entities using this information shall do so at their own risk.

FOR THE EXCLUSIVE USE OF  
CHEVRON U.S.A. INC.  
I, Robert L. Lastrapes, Professional  
Surveyor, do hereby state this plat is true  
and correct to the best of my knowledge.

ROBERT L. LASTRAPES  
NEW MEXICO  
23006  
8-3-2016  
Robert L. Lastrapes  
Registration No. 23006

SURFACE USE PLAT

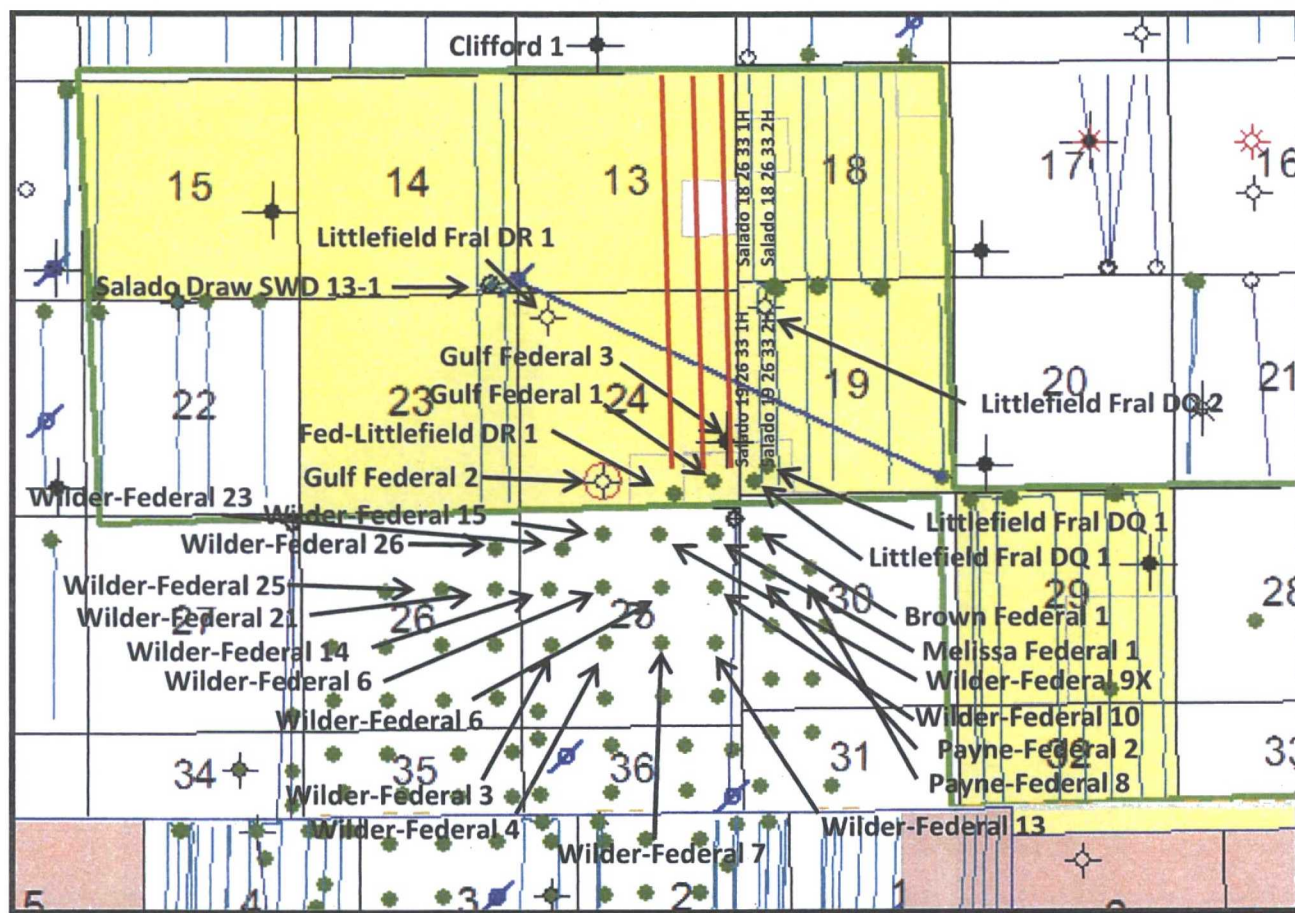
Page 2 of 2

CHEVRON U.S.A. INC.  
PROPOSED PAD  
SD WE 24 FED P24 NO. 6H WELL  
SECTIONS 24 & 25, T26S-R32E  
LEA COUNTY, NEW MEXICO

DRAWN BY: BOR		REVISIONS	
PROJ. MGR.: VHV	No.	DATE:	REVISED BY:
DATE: JUNE 21, 2016	No.	DATE:	REVISED BY:
FILENAME: T:\2015\2153307\DWG\SD WE 24 FED P24 6H_SUP.dwg			



C. H. Fenstermaker & Associates, L.L.C.  
135 Regency Sq. Lafayette, LA 70508  
Ph 337-237-2200 Fax 337-232-3299  
[www.fenstermaker.com](http://www.fenstermaker.com)

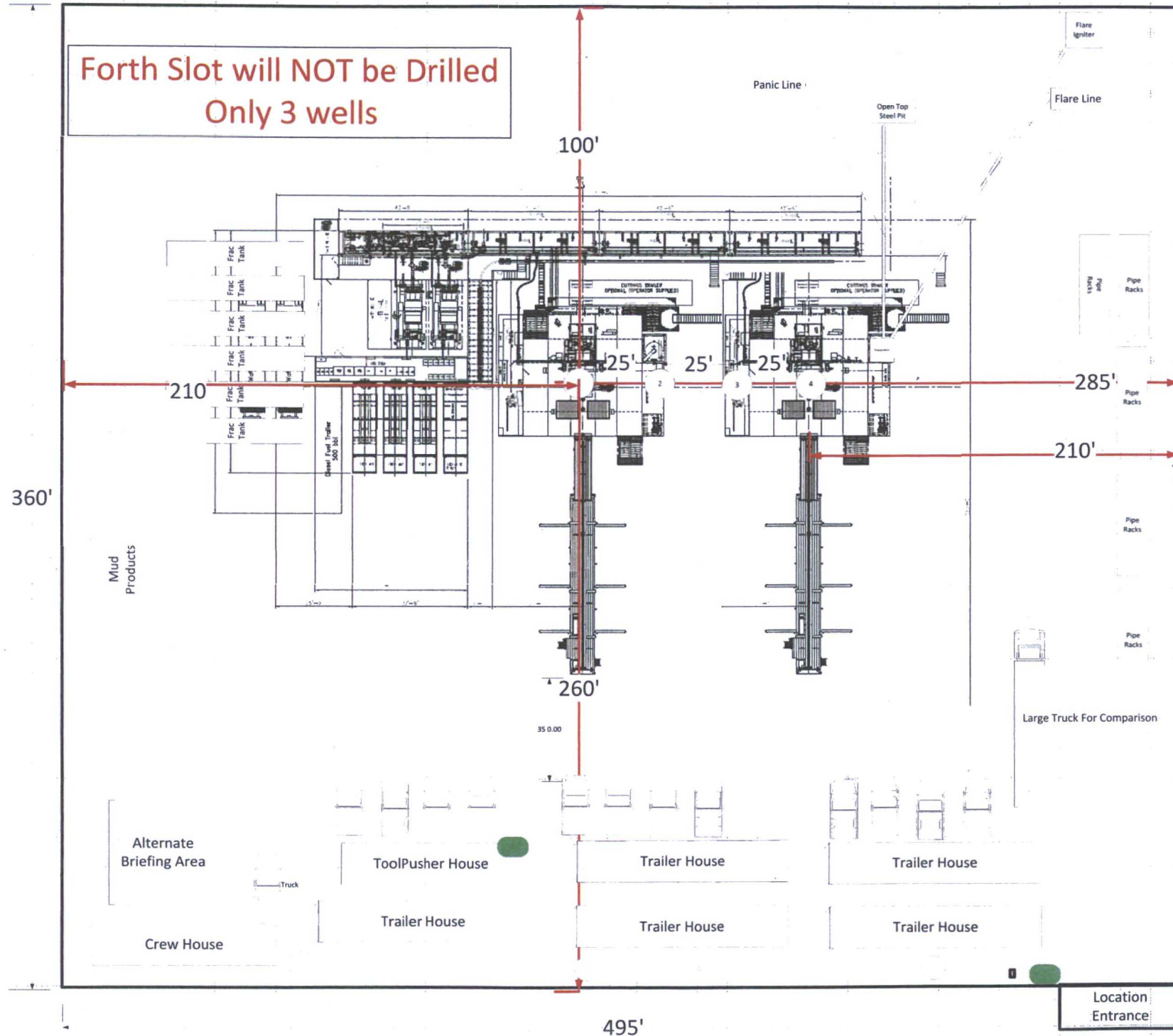


Pad 24 Projected Wellpath

# Nabors Pace X SD WE 24 Fed P24 5-7H



**Forth Slot will NOT be Drilled  
Only 3 wells**



*Rig layout shows  
rig in first and last  
well for illustration  
purposes.*

## H2S Monitor Locations

- Bop/Cellar
- Rig Floor
- Shaker Skid
- Bell Nipple

## Flag Locations

- Sign-in Shack
- Rig Floor
- Dog House

## 10 Minute Escape Packs

- 1 at Pits
- 1 at Trip Tank
- 1 at Accumulator
- 4 at Rig Floor

## 45 Minute Escape Packs

- 2 at Briefing Area
- 2 at Alternate Briefing Area

## Legend

● H2S Monitor

● Flag



SD WE 24 FED P24  
NO. 5H WELL

X= 720,045 NAD 27  
Y= 372,221  
LAT. 32.021363  
LONG. 103.623342

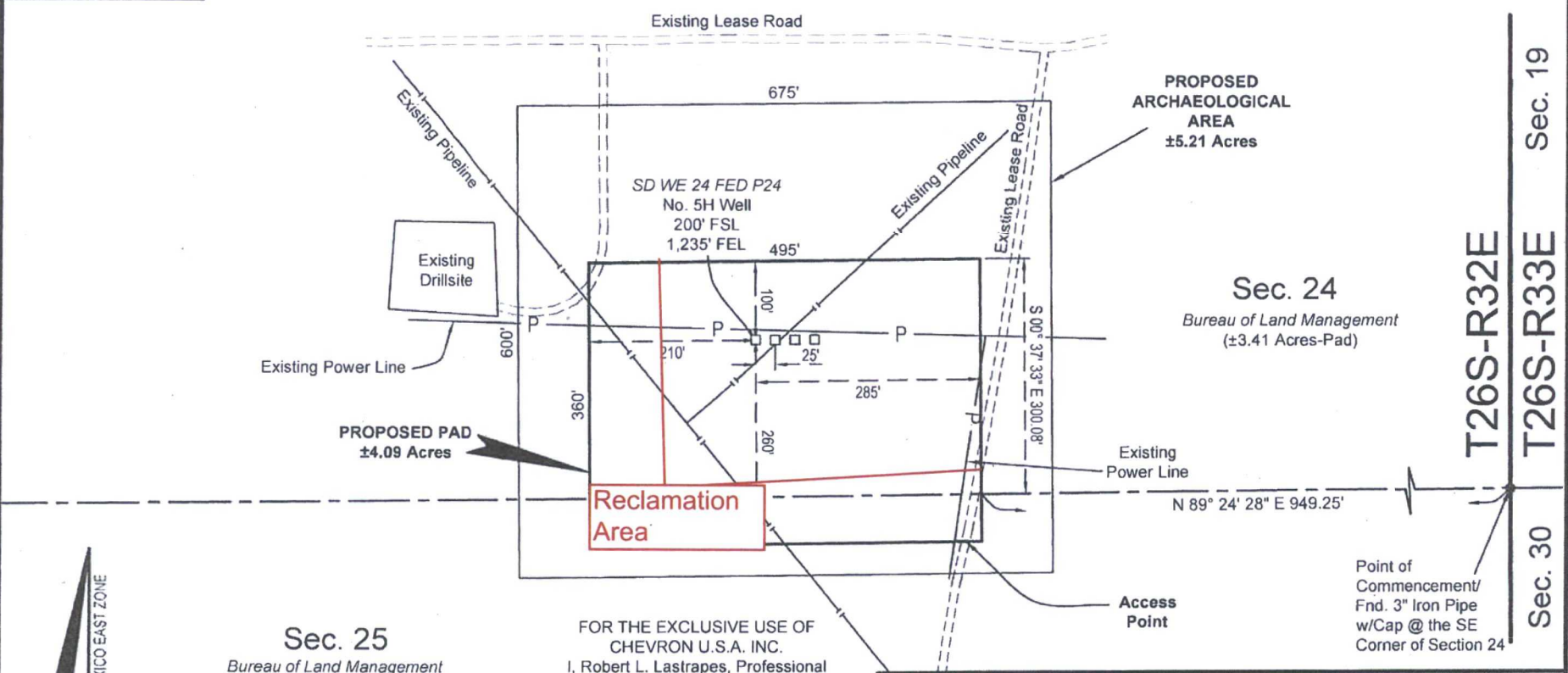
X= 761,232 NAD83  
Y= 372,278  
LAT. 32.021488  
LONG. 103.623810

ELEVATION +3138' NAVD 88

NW ARCH. AREA CORNER	NE ARCH. AREA CORNER	SE ARCH. AREA CORNER	SW ARCH. AREA CORNER
X= 719,742 NAD 27 Y= 372,518 ELEVATION +3141' NAVD 88	X= 720,417 NAD 27 Y= 372,525 ELEVATION +3140' NAVD 88	X= 720,422 NAD 27 Y= 371,924 ELEVATION +3136' NAVD 88	X= 719,747 NAD 27 Y= 371,918 ELEVATION +3136' NAVD 88
NW PAD CORNER	NE PAD CORNER	SE PAD CORNER	SW PAD CORNER
X= 719,834 NAD 27 Y= 372,319 ELEVATION +3139' NAVD 88	X= 720,329 NAD 27 Y= 372,324 ELEVATION +3139' NAVD 88	X= 720,332 NAD 27 Y= 371,964 ELEVATION +3137' NAVD 88	X= 719,837 NAD 27 Y= 371,959 ELEVATION +3137' NAVD 88

**LEGEND**

- Section Line
- Township/Range Line
- Existing Pipeline
- P Existing Powerline
- Existing Lease Road
- End Monument



NAD 27 NEW MEXICO EAST ZONE

Scale: 1" = 200'

200' 0 100' 200'

FOR THE EXCLUSIVE USE OF  
CHEVRON U.S.A. INC.  
I, Robert L. Lastrapes, Professional  
Surveyor, do hereby state this plat is true  
and correct to the best of my knowledge.



**FENSTERMAKER**

C. H. Fenstermaker & Associates, L.L.C.  
135 Regency Sq. Lafayette, LA 70508  
Ph. 337-237-2200 Fax 337-232-3299  
www.fenstermaker.com

**SURFACE USE PLAT** Page 1 of 2

**CHEVRON U.S.A. INC.**  
PROPOSED PAD  
SD WE 24 FED P24 NO. 5H WELL  
SECTIONS 24 & 25, T26S-R32E  
LEA COUNTY, NEW MEXICO

DRAWN BY: BOR	REVISIONS		
PROJ. MGR.: VHV	No.	DATE:	REVISED BY:
DATE: JUNE 21, 2016	No.	DATE:	REVISED BY:
FILENAME: T:\2015\2153305\DWG\SD WE 24 FED P24 5H SUP.dwg			

**NOTE:**

Please be advised, that while reasonable efforts are made to locate and verify pipelines and anomalies using our standard pipeline locating equipment, it is impossible to be 100 % effective. As such, we advise using caution when performing work as there is a possibility that pipelines and other hazards, such as fiber optic cables, PVC pipelines, etc may exist undetected on site.

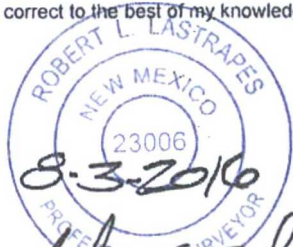
**NOTE:**

Many states maintain information centers that establish links between those who dig (excavators) and those who own and operate underground facilities (operators). It is advisable and in most states, law, for the contractor to contact the center for assistance in locating and marking underground utilities. For guidance: New Mexico One Call System - [www.nmonecall.org](http://www.nmonecall.org).

**DISCLAIMER:** At this time, C. H. Fenstermaker & Associates, L.L.C. has not performed nor was asked to perform any type of engineering, hydrological modeling, flood plain, or "No Rise" certification analyses, including but not limited to determining whether the project will impact flood hazards in connection with federal/FEMA, state, and/or local laws, ordinances and regulations. Accordingly, Fenstermaker makes no warranty or representation of any kind as to the foregoing issues, and persons or entities using this information shall do so at their own risk.

FOR THE EXCLUSIVE USE OF  
CHEVRON U.S.A. INC.

I, Robert L. Lastrapes, Professional  
Surveyor, do hereby state this plat is true  
and correct to the best of my knowledge.

  
Robert L. Lastrapes  
Registration No. 23006

**SURFACE USE PLAT**

Page 2 of 2

**CHEVRON U.S.A. INC.**  
PROPOSED PAD  
SD WE 24 FED P24 NO. 5H WELL  
SECTIONS 24 & 25, T26S-R32E  
LEA COUNTY, NEW MEXICO

DRAWN BY: BOR

**REVISIONS**

PROJ. MGR.: VHV

No.

DATE:

REVISED BY:

DATE: JUNE 21, 2016

No.

DATE:

REVISED BY:

FILENAME: T:\2015\2153305\DWG\SD WE 24 FED P24 5H SUP.dwg



C. H. Fenstermaker & Associates, L.L.C.  
135 Regency Sq. Lafayette, LA 70508  
Ph. 337-237-2200 Fax 337-232-3299  
[www.fenstermaker.com](http://www.fenstermaker.com)