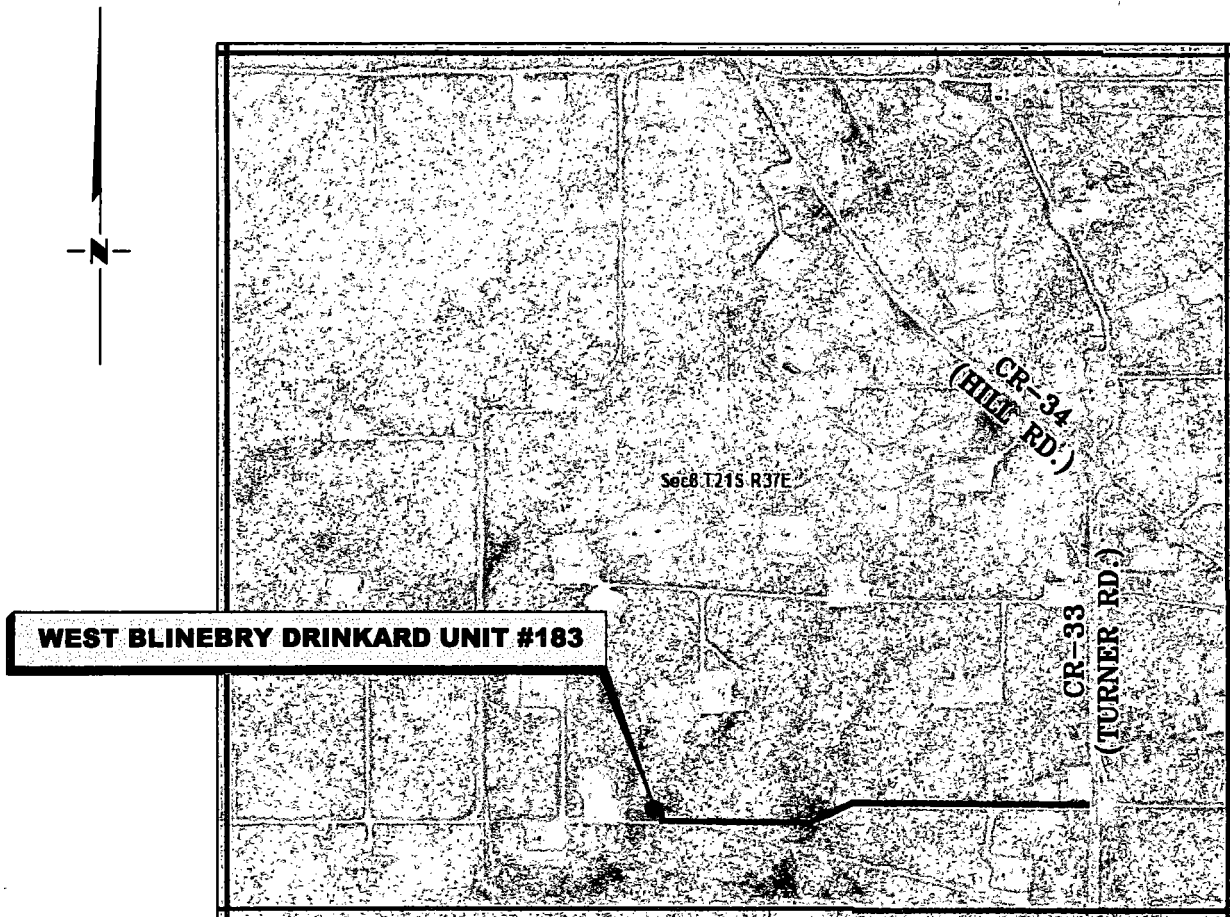


# VICINITY MAP

NOT TO SCALE



*From the intersection of CR-34 (Hill Rd.) and CR-33 (Turner Rd.)  
Go South on CR-33 approx. 0.3 miles to a lease road on the right;  
Turn right and go West approx. 0.4 miles to lease road on the right;  
Turn right and go North approx. 205 feet to location on the left.*

**SECTION 8, TWP. 21 SOUTH, RGE. 37 EAST,  
N. M. P. M., LEA CO., NEW MEXICO**

OPERATOR: Apache Corporation

LOCATION: 730' FSL & 2215' FWL

LEASE: West Blinebry Drinkard Unit

ELEVATION: 3501'

WELL NO.: 183

Firm No.: TX 10193838 NM 4655451

Copyright 2016 - All Rights Reserved

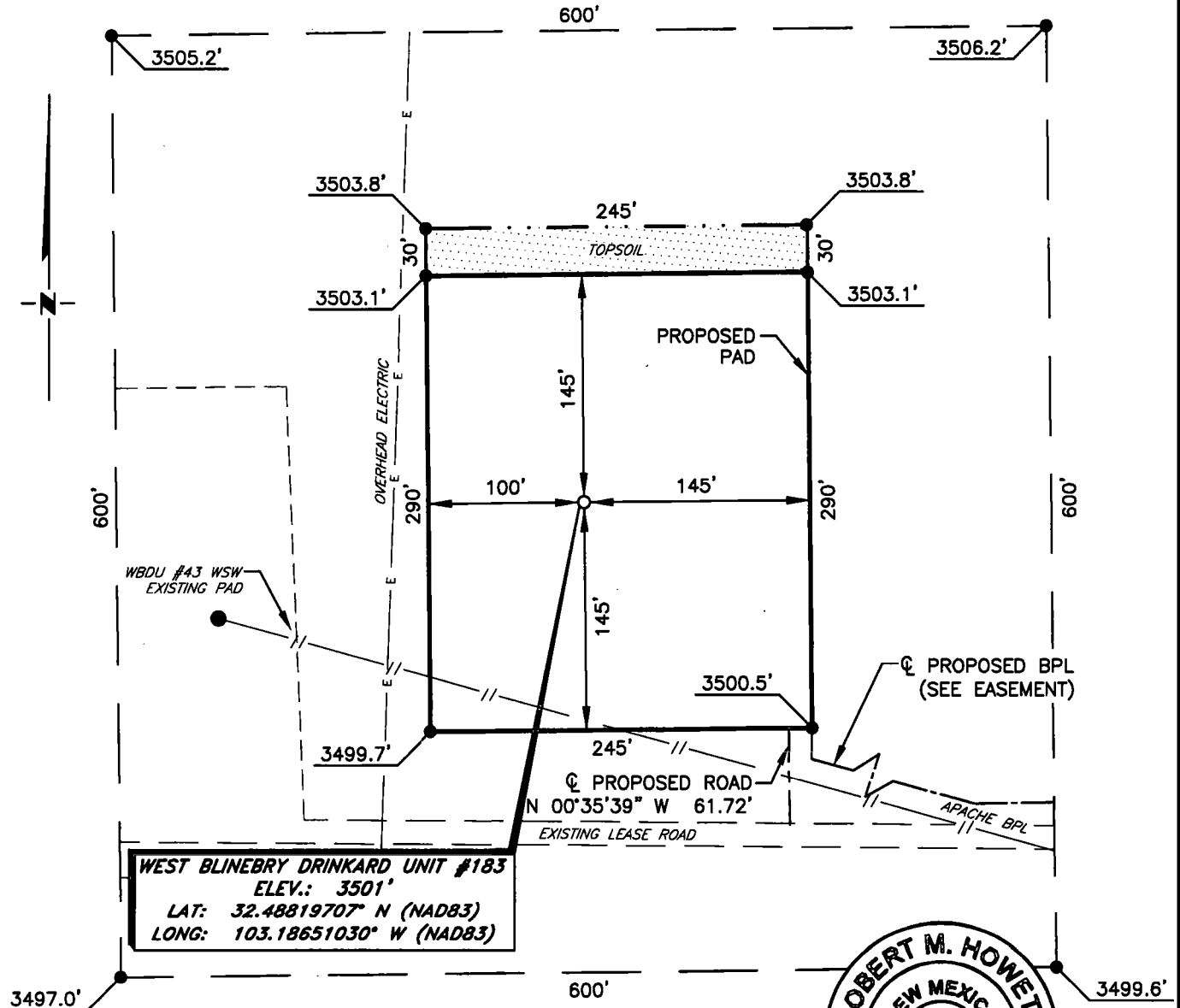
NO.	REVISION	DATE
JOB NO.: LS1611394		
DWG. NO.: 1611394VM		

# RRC

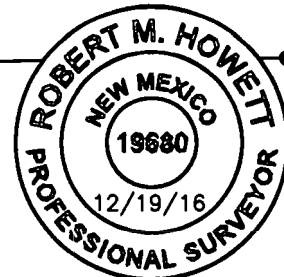
308 W. BROADWAY ST., HOBBS, NM 88240 (575) 964-8200

SCALE: N. T. S.
DATE: 12-07-16
SURVEYED BY: JM/HD
DRAWN BY: LPS
APPROVED BY: RMH
SHEET: 1 OF 1

**APACHE CORPORATION**  
**WEST BLINEBRY DRINKARD UNIT #183**  
**(730' FSL & 2215' FWL)**  
**SECTION 8, T21S, R37E**  
**N. M. P. M., LEA CO., NEW MEXICO**



**WEST BLINEBRY DRINKARD UNIT #183**  
**ELEV.: 3501'**  
**LAT: 32.48819707° N (NAD83)**  
**LONG: 103.18651030° W (NAD83)**



SCALE: 1" = 100'  
0 50 100

BEARINGS ARE  
NAD 83 GRID - NM EAST  
DISTANCES ARE  
GROUND.

Firm No.: TX 10193838 NM 4655451

Copyright 2016 - All Rights Reserved

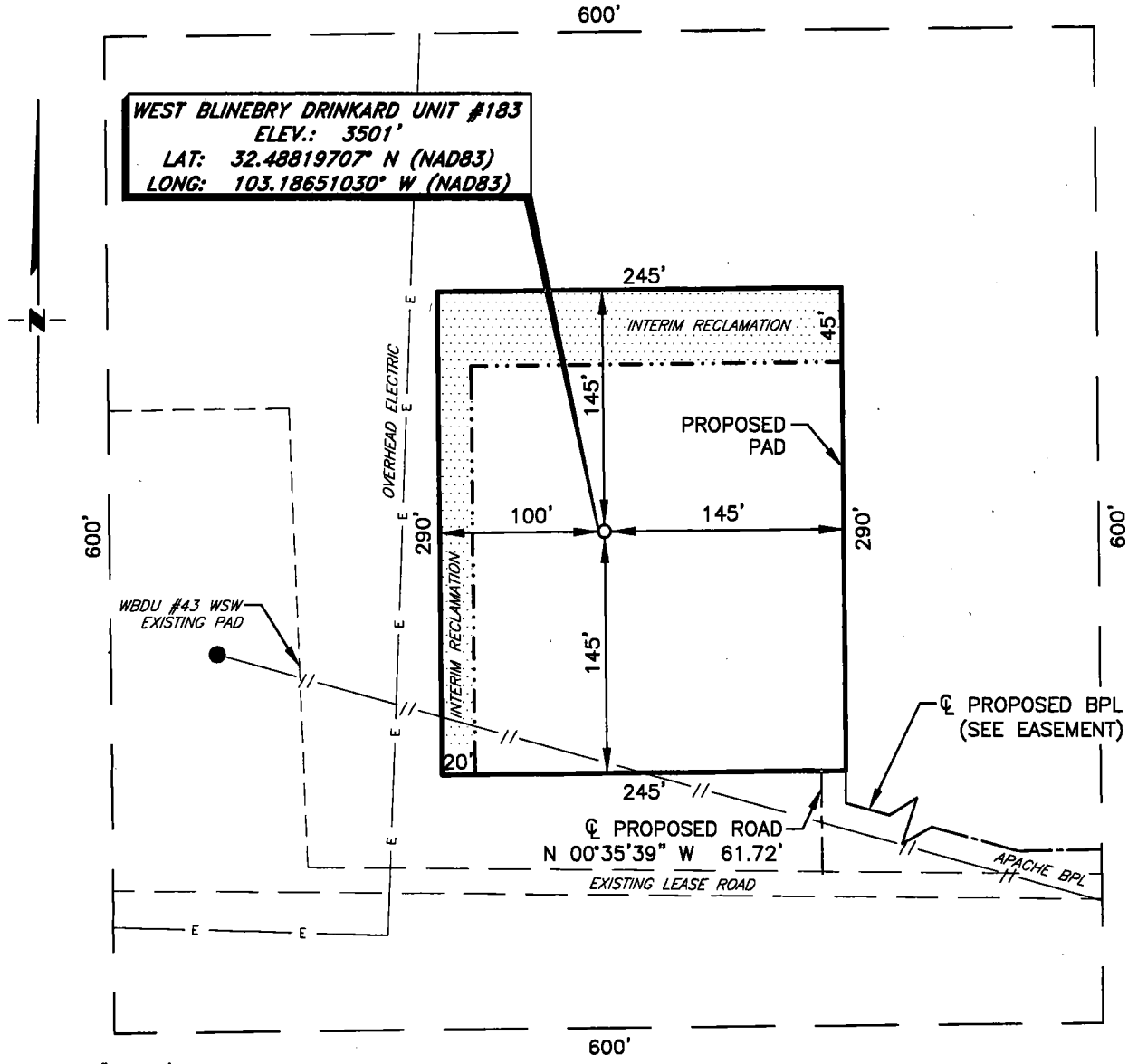
NO.	REVISION	DATE
JOB NO.:	LS1611394	
DWG. NO.:	1611394PAD	

**RRC**

308 W. BROADWAY ST., HOBBS, NM 88240 (575) 964-8200

SCALE: 1" = 100'
DATE: 12-7-16
SURVEYED BY: JM/HD
DRAWN BY: LPS
APPROVED BY: RMH
SHEET: 1 OF 1

**APACHE CORPORATION  
INTERIM RECLAMATION  
WEST BLINEBRY DRINKARD UNIT #183  
(730' FSL & 2215' FWL)  
SECTION 8, T21S, R37E  
N. M. P. M., LEA CO., NEW MEXICO**



SCALE: 1" = 100'  
0 50 100  
BEARINGS ARE  
NAD 83 GRID - NM EAST  
DISTANCES ARE  
GROUND.

Firm No.: TX 10193838 NM 4655451

Copyright 2016 - All Rights Reserved


NO.	REVISION	DATE
JOB NO.: LS1611394		
DWG. NO.: 1611394REC		

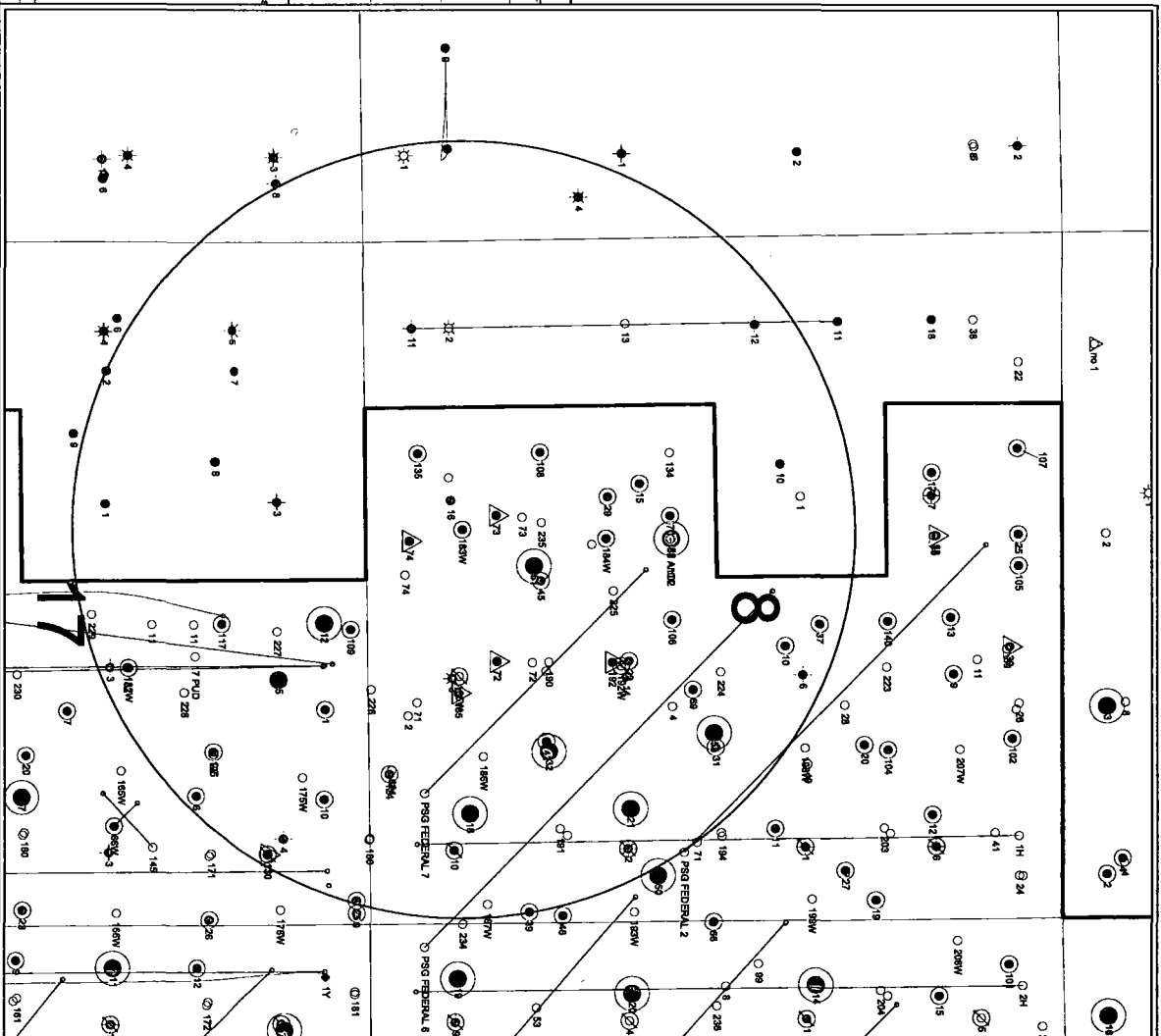


**RRC**

308 W. BROADWAY ST., HOBBS, NM 88240 (575) 964-8200

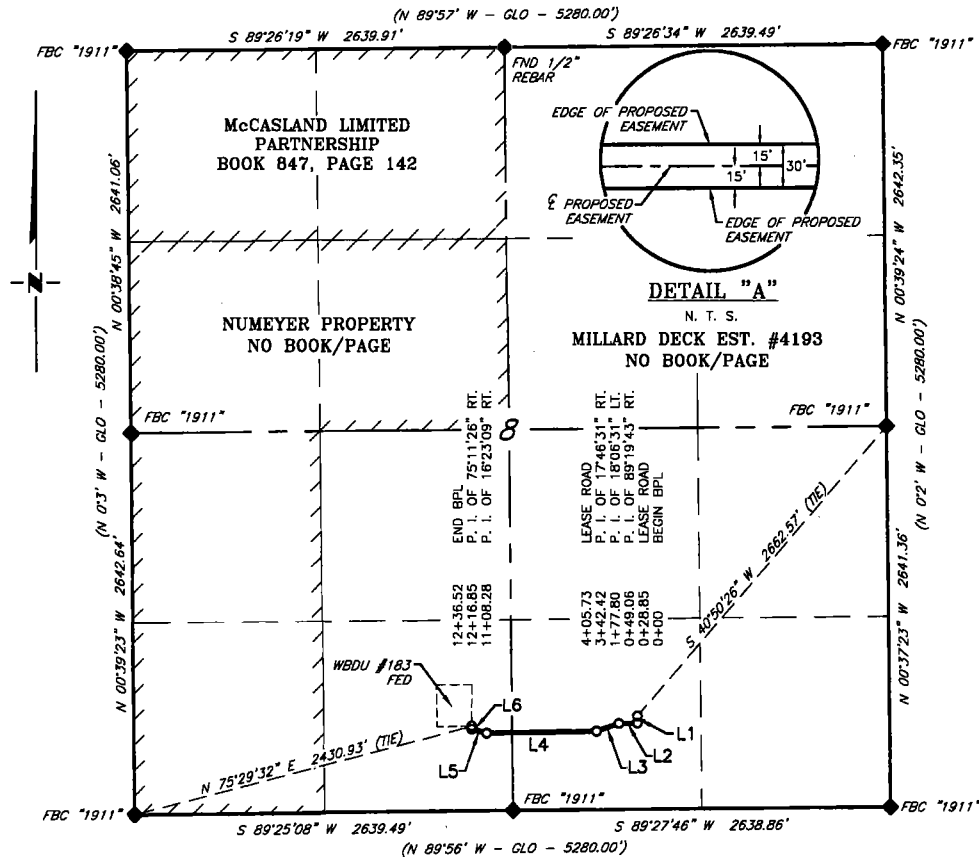
SCALE: 1" = 100'
DATE: 12-7-16
SURVEYED BY: JM/HD
DRAWN BY: LPS
APPROVED BY: RMH
SHEET: 1 OF 1

Apache Corporation	
WBDU_183W	
1 mile radius at SHL	
SEC. 8, T21S 37E	
Bartlesville, OK	
 0 1,000 FEET	
POSTED WELL DATA	
● Well Number	
<b>WELL SYMBOLS</b> ☐ Dry Hole ☐ Dry Hole With Show of Oil & Gas ☐ Gas Well ☐ Active Injection ☐ Key Injection well ☐ Location ☐ Oil & Gas Well ☐ Oil Well ☐ Plugged and Abandoned ☐ Active Producer ☐ Pick Hole ☐ PMA Oil ☐ Proposed Location ☐ Permitted Location	
By Hand Trace February 3, 2017	



UTM 18QUT 182507 NAD

**APACHE CORPORATION**  
**PROPOSED BURIED PIPELINE FOR THE**  
**WEST BLINEBRY DRINKARD UNIT #183 WELL LOCATION**  
**SECTION 8, T21S, R37E**  
**N. M. P. M., LEA COUNTY, NEW MEXICO**



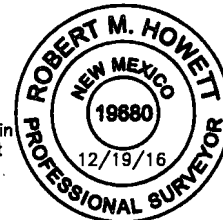
LINE TABLE		
LINE	BEARING	LENGTH
L1	S 00°02'40" E	49.06'
L2	S 89°17'03" W	128.74'
L3	S 71°10'32" W	164.62'
L4	S 88°57'03" W	765.86'
L5	N 74°39'48" W	108.57'
L6	N 00°31'38" E	19.67'

SCALE: 1" = 1000'  
0 500' 1000'  
BEARINGS ARE GRID NAD 27  
NM EAST  
DISTANCES ARE HORIZ. GROUND.

LEGEND  
( ) RECORD DATA - GLO  
♦ FOUND MONUMENT  
AS NOTED  
— PROPOSED BURIED  
PIPELINE

I, R. M. Howett, a N. M. Professional Surveyor, hereby certify that I prepared this plat from an actual survey made on the ground under my direct supervision, said survey and plat meet the Min. Stds. for Land Surveying in the State of N. M. and are true and correct to the best of my knowledge and belief.

*Robert M. Howett*  
Robert M. Howett NM PS 19680



Firm No.: TX 10193838 NM 4655451

Copyright 2016 - All Rights Reserved

NO.	REVISION	DATE
1		
2		
3		
4		
5		
6		
7		
8		
9		
10		
11		
12		
13		
14		
15		
16		
17		
18		
19		
20		
21		
22		
23		
24		
25		
26		
27		
28		
29		
30		
31		
32		
33		
34		
35		
36		
37		
38		
39		
40		
41		
42		
43		
44		
45		
46		
47		
48		
49		
50		
51		
52		
53		
54		
55		
56		
57		
58		
59		
60		
61		
62		
63		
64		
65		
66		
67		
68		
69		
70		
71		
72		
73		
74		
75		
76		
77		
78		
79		
80		
81		
82		
83		
84		
85		
86		
87		
88		
89		
90		
91		
92		
93		
94		
95		
96		
97		
98		
99		
100		

JOB NO.: LS1611394  
DWG. NO.: 1611394PL1

**RRC**

308 W. BROADWAY ST., HOBBS, NM 88240 (575) 964-8200

SCALE: 1" = 1000'  
DATE: 12-6-2016  
SURVEYED BY: JM/HD  
DRAWN BY: CMJ  
APPROVED BY: RMH  
SHEET: 1 OF 2

**APACHE CORPORATION**  
**PROPOSED BURIED PIPELINE FOR THE**  
**WEST BLINEBRY DRINKARD UNIT #183 WELL LOCATION**  
**SECTION 8, T21S, R37E**  
**N. M. P. M., LEA COUNTY, NEW MEXICO**

**DESCRIPTION**

A strip of land 30 feet wide, being 1,236.52 feet or 74.941 rods in length, lying in Section 8, Township 21 South, Range 37 East, N. M. P. M., Lea County, New Mexico, being 15 feet left and 15 feet right of the following described survey of a centerline across the land of Millard Deck Est. No. 4193 according to a deed filed for record in Book ?, Page ?, of the Deed Records of Lea County, New Mexico:

BEGINNING at Engr. Sta. 0+00, a point in the Southeast quarter of Section 8, which bears, S 40°50'26" W, 2,662.57 feet from a brass cap, stamped "1911", found for the East quarter corner of Section 8;

Thence S 00°02'40" E, 49.06 feet, to Engr. Sta. 0+49.06, a P. I. of 89°19'43" right;

Thence S 89°17'03" W, 128.74 feet, to Engr. Sta. 1+77.80, a P. I. of 18°06'31" left;

Thence S 71°10'32" W, 164.62 feet, to Engr. Sta. 3+42.42, a P. I. of 17°46'31" right;

Thence S 88°57'03" W, 765.86 feet, to Engr. Sta. 11+08.28, a P. I. of 16°23'09" right;

Thence N 74°39'48" W, 108.57 feet, to Engr. Sta. 12+16.85, a P. I. of 75°11'26" right;

Thence N 00°31'38" E, 19.67 feet, to Engr. Sta. 12+36.52, the End of Survey, a point in the Southwest quarter of Section 8, which bears, N 75°29'32" E, 2,430.93 feet from a brass cap, stamped "1911", found for the Southwest corner of Section 8.

Said strip of land contains 0.851 acres, more or less, and is allocated by forties as follows:

SW 1/4 SE 1/4	56.539 Rods	0.642 Acres
SE 1/4 SW 1/4	18.402 Rods	0.209 Acres

Firm No.: TX 10193838 NM 4655451

Copyright 2016 - All Rights Reserved

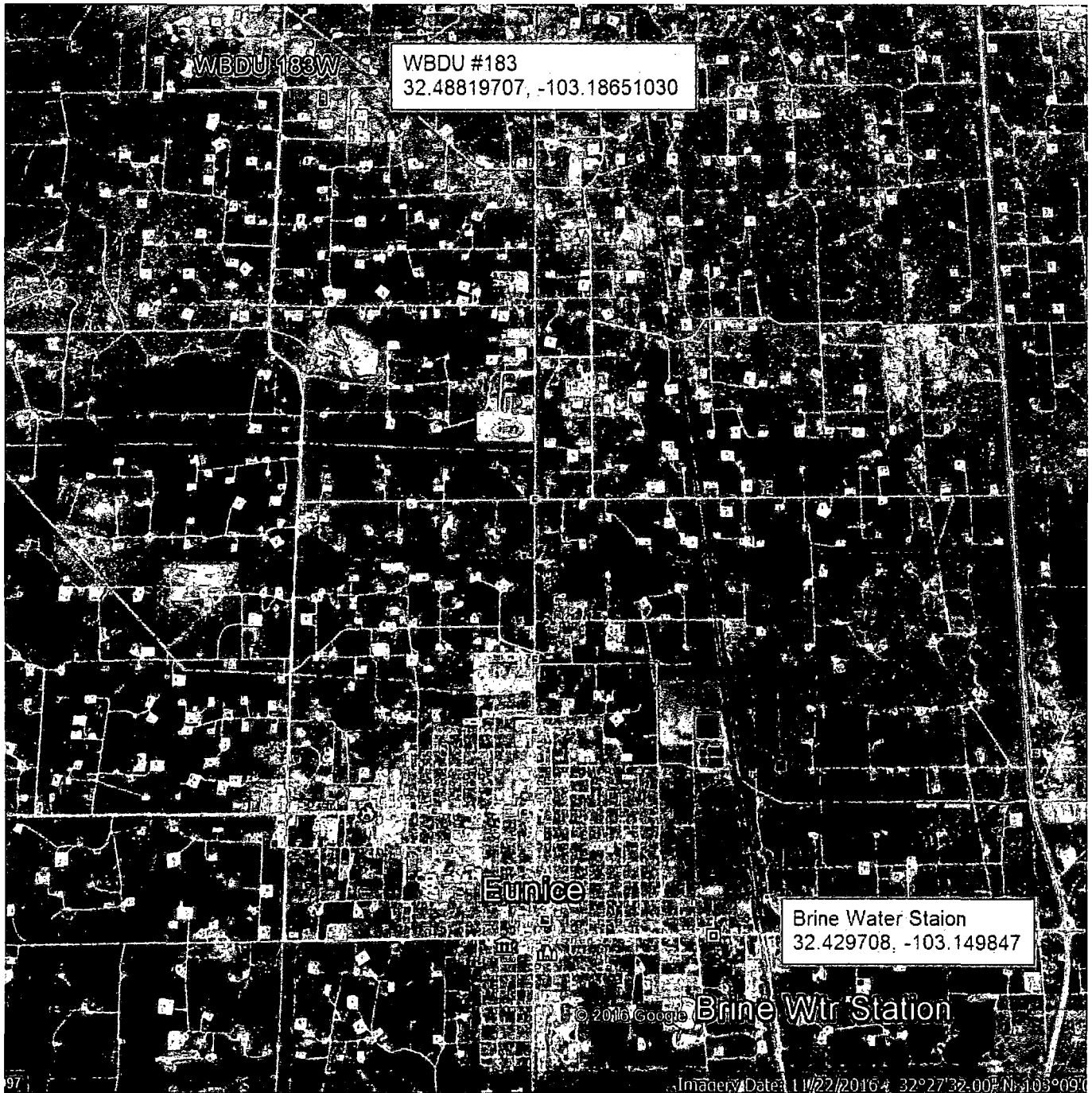
NO.	REVISION	DATE
JOB NO.: LS1611394		
DWG. NO.: 1611394PL2		

**RRC**

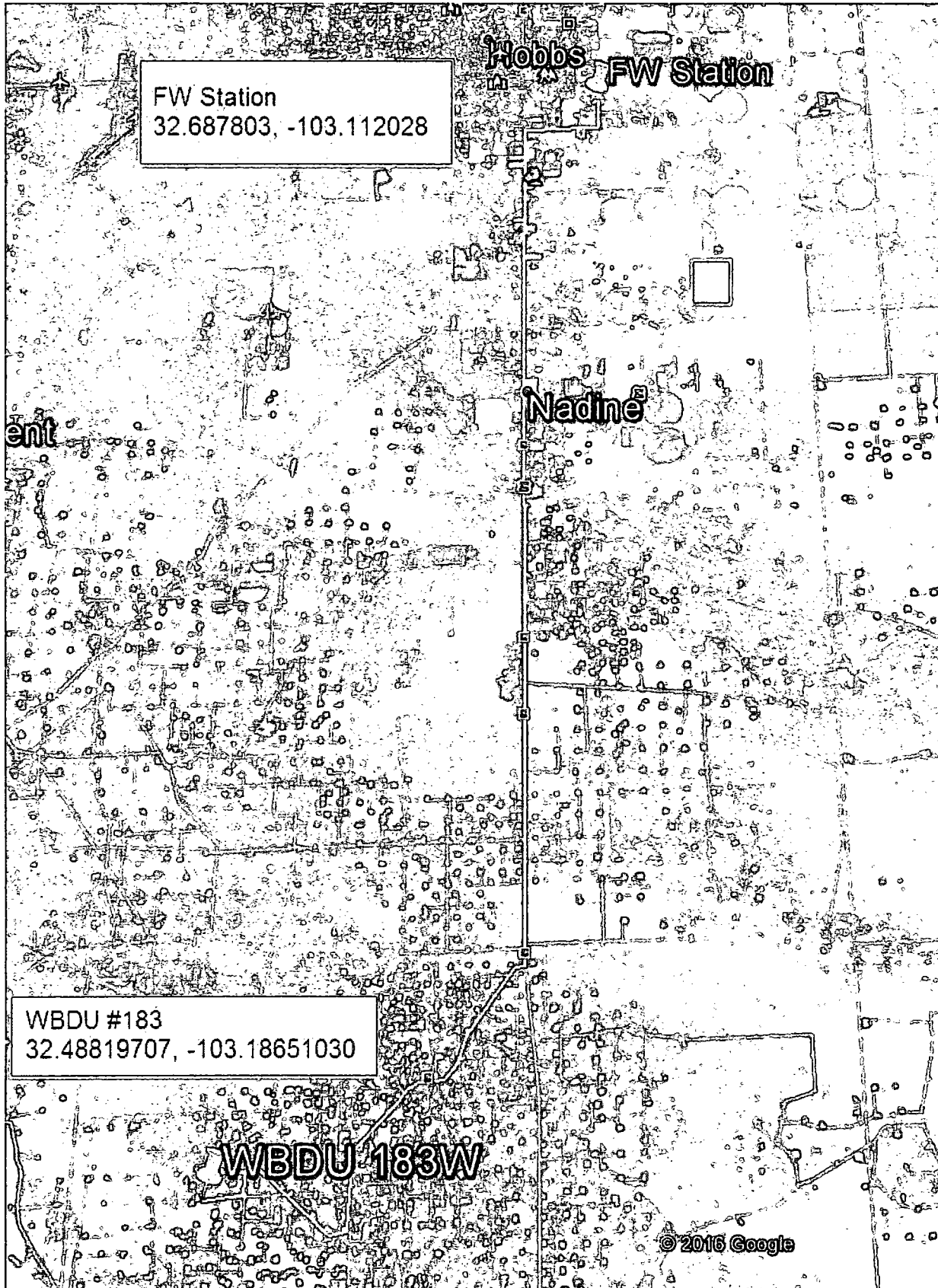
308 W. BROADWAY ST., HOBBS, NM 88240 (575) 964-8200

SCALE: 1" = 1000'
DATE: 12-6-2016
SURVEYED BY: JM/HD
DRAWN BY: CMJ
APPROVED BY: RMH
SHEET: 2 OF 2

# Basic Energy Brine Water Station Route to WBDU 183

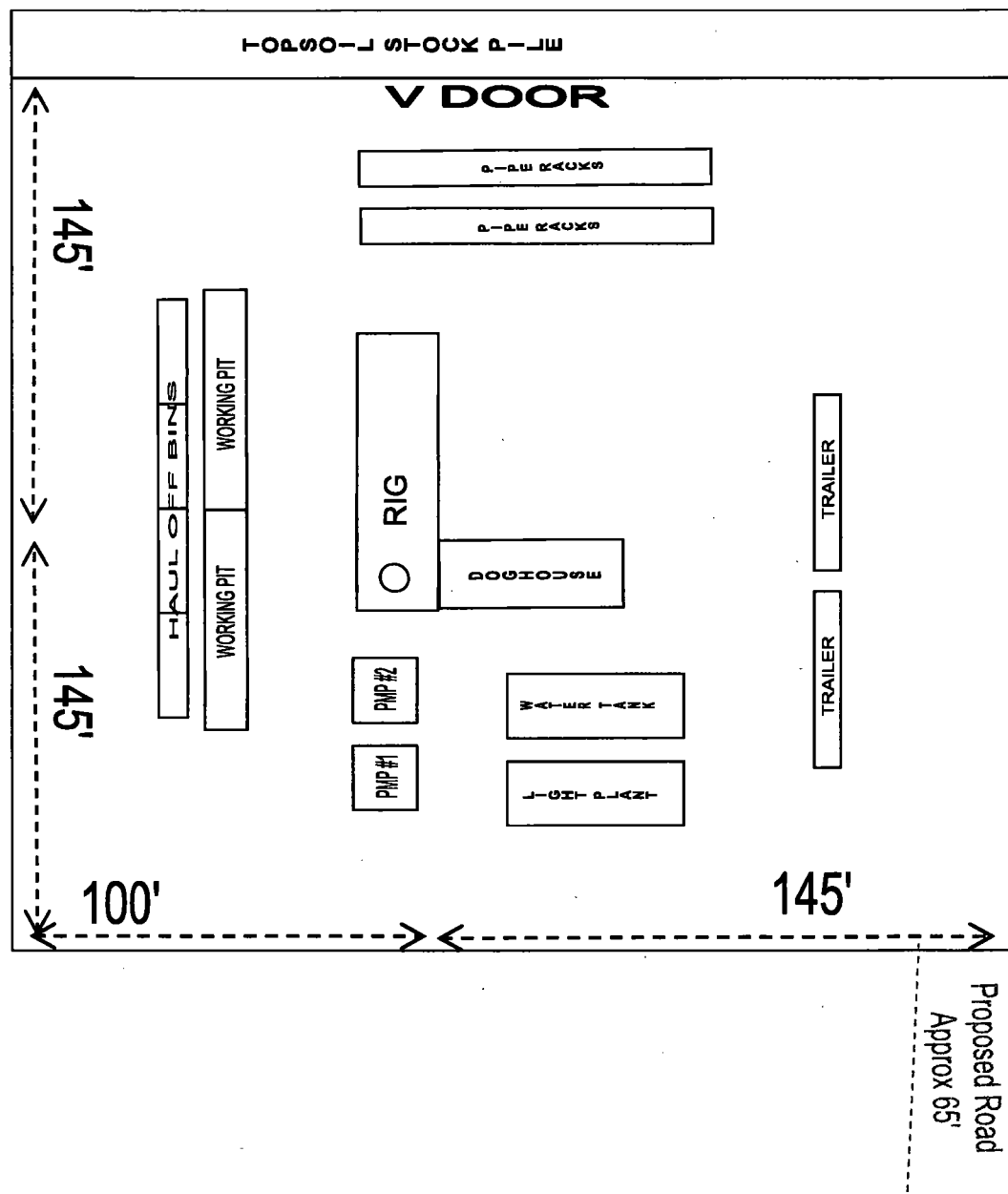
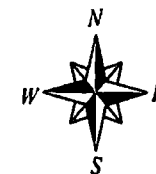


# H & P Water Station Route to WBDU 183





**RIG ORIENTATION & LAYOUT**  
**WEST BLINEBRY DRINKARD UNIT 183**  
**EXHIBIT 5**



**PRIVATE SURFACE OWNER AGREEMENT**

OPERATOR: APACHE CORPORATION

WELL NAME: WEST BLINEBRY DRINKARD UNIT 183W

SECTION: 8 TOWNSHIP: 21S RANGE: 37E

LOCATION: SHL: 730' FSL & 2215' FWL COUNTY: LEA STATE: NM

LEASE NUMBER: NMNM-90161


**STATEMENT OF SURFACE USE**

The surface to the subject land is owned by	<u>MILLARD DECK ESTATE</u>
	<u>c/o U.S. TRUST BANK OF AMERICA</u>
	<u>ATTN: SHANE COLE</u>
	<u>PO BOX 1479</u>
<u>(817)-390-6994</u>	<u>FORT WORTH, TX 76101</u>

The surface owner has been contacted regarding the drilling of the subject well, and an agreement for surface use has been negotiated.

**CERTIFICATION:** I hereby certify that the statements made in this statement are to the best of my knowledge, true and correct.

NAME: DEAN JARRETT

SIGNATURE: 

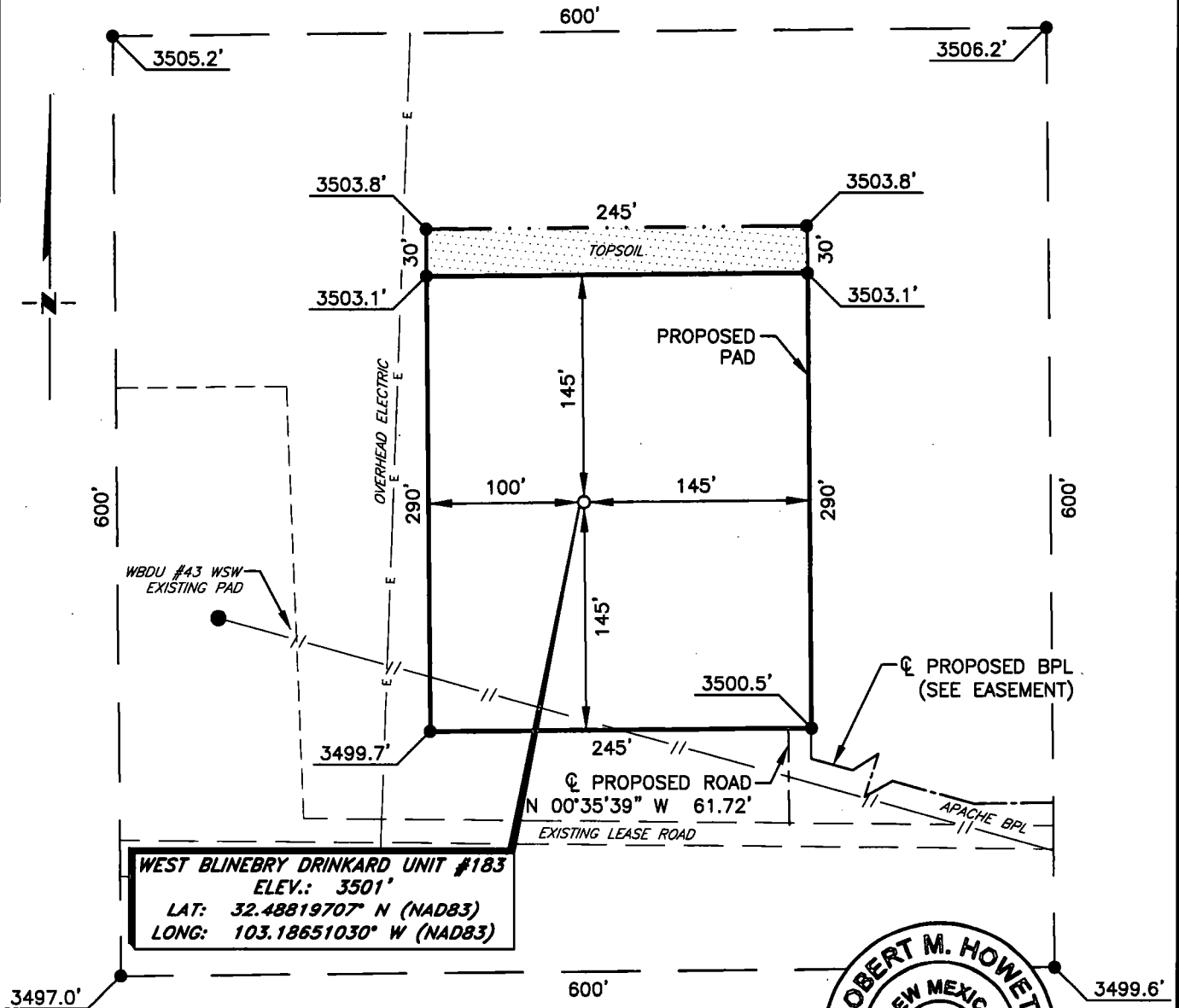
DATE: 2-3-2017

TITLE: SR. SURFACE LANDMAN

To expedite your Application to Drill please fax the completed form to the  
Bureau of Land Management (575) 234-5927 or (575) 885-9264  
Attn: Legal Instruments Examiner  
620 E. Green Street  
Carlsbad, NM 88220

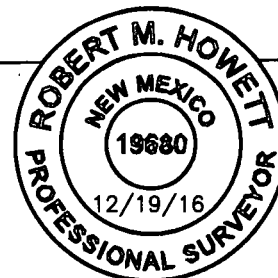
The original document with signature should be mailed as soon as possible.

**APACHE CORPORATION**  
**WEST BLINEBRY DRINKARD UNIT #183**  
 (730' FSL & 2215' FWL)  
 SECTION 8, T21S, R37E  
 N. M. P. M., LEA CO., NEW MEXICO



SCALE: 1" = 100'  
 0 50 100  
 BEARINGS ARE  
 NAD 83 GRID - NM EAST  
 DISTANCES ARE  
 GROUND.

Firm No.: TX 10193838 NM 4655451



Copyright 2016 - All Rights Reserved

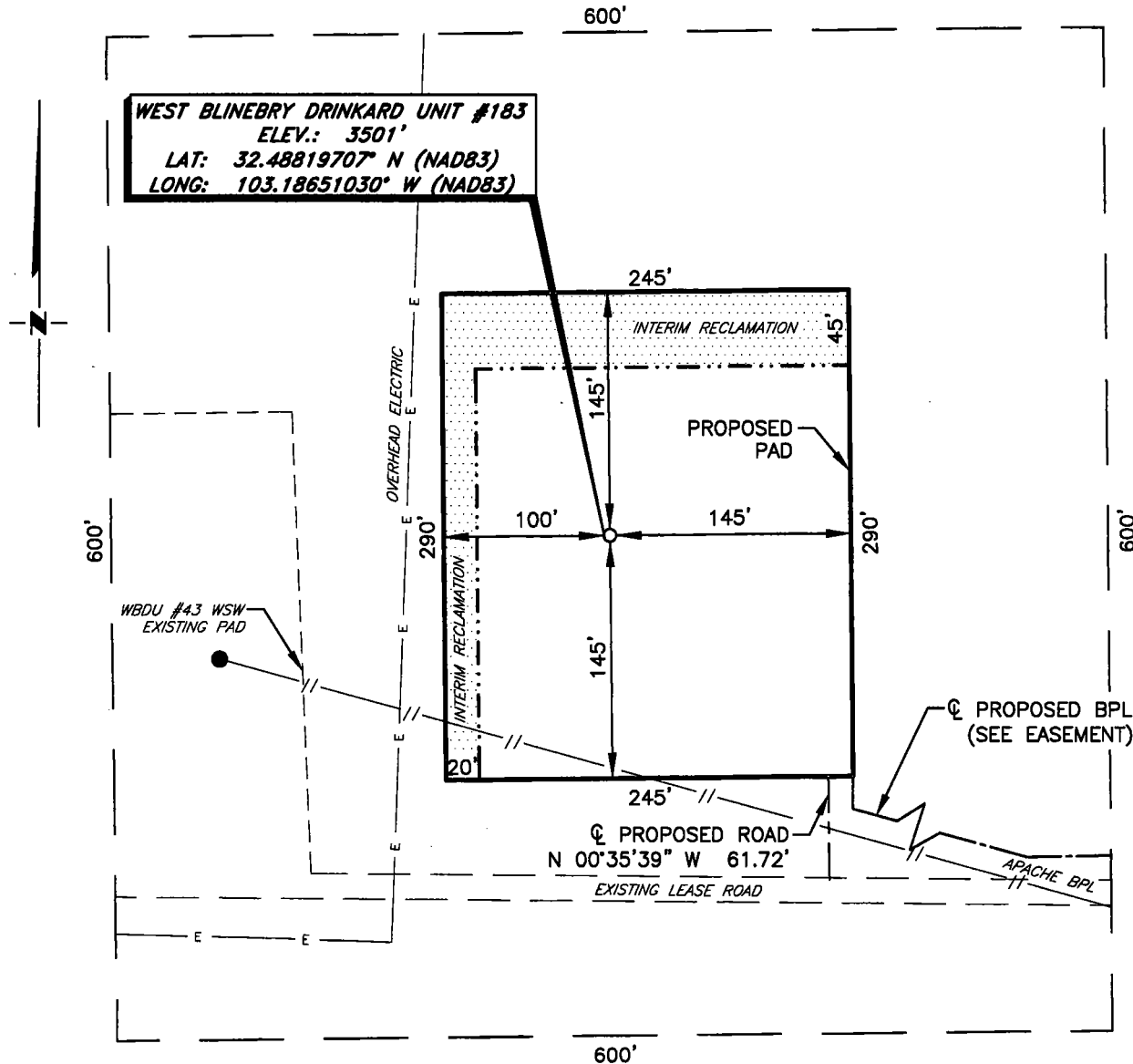
NO.	REVISION	DATE
JOB NO.: LS1611394		
DWG. NO.: 1611394PAD		

**RRC**

308 W. BROADWAY ST., HOBBS, NM 88240 (575) 964-8200

SCALE: 1" = 100'
DATE: 12-7-16
SURVEYED BY: JM/HD
DRAWN BY: LPS
APPROVED BY: RMH
SHEET: 1 OF 1

**APACHE CORPORATION**  
**INTERIM RECLAMATION**  
**WEST BLINEBRY DRINKARD UNIT #183**  
**(730' FSL & 2215' FWL)**  
**SECTION 8, T21S, R37E**  
**N. M. P. M., LEA CO., NEW MEXICO**



SCALE: 1" = 100'  
0 50 100  
BEARINGS ARE  
NAD 83 GRID - NM EAST  
DISTANCES ARE  
GROUND.

Firm No.: TX 10193838 NM 4655451

Copyright 2016 - All Rights Reserved

NO.	REVISION	DATE
JOB NO.:	LS1611394	
DWG. NO.:	1611394REC	

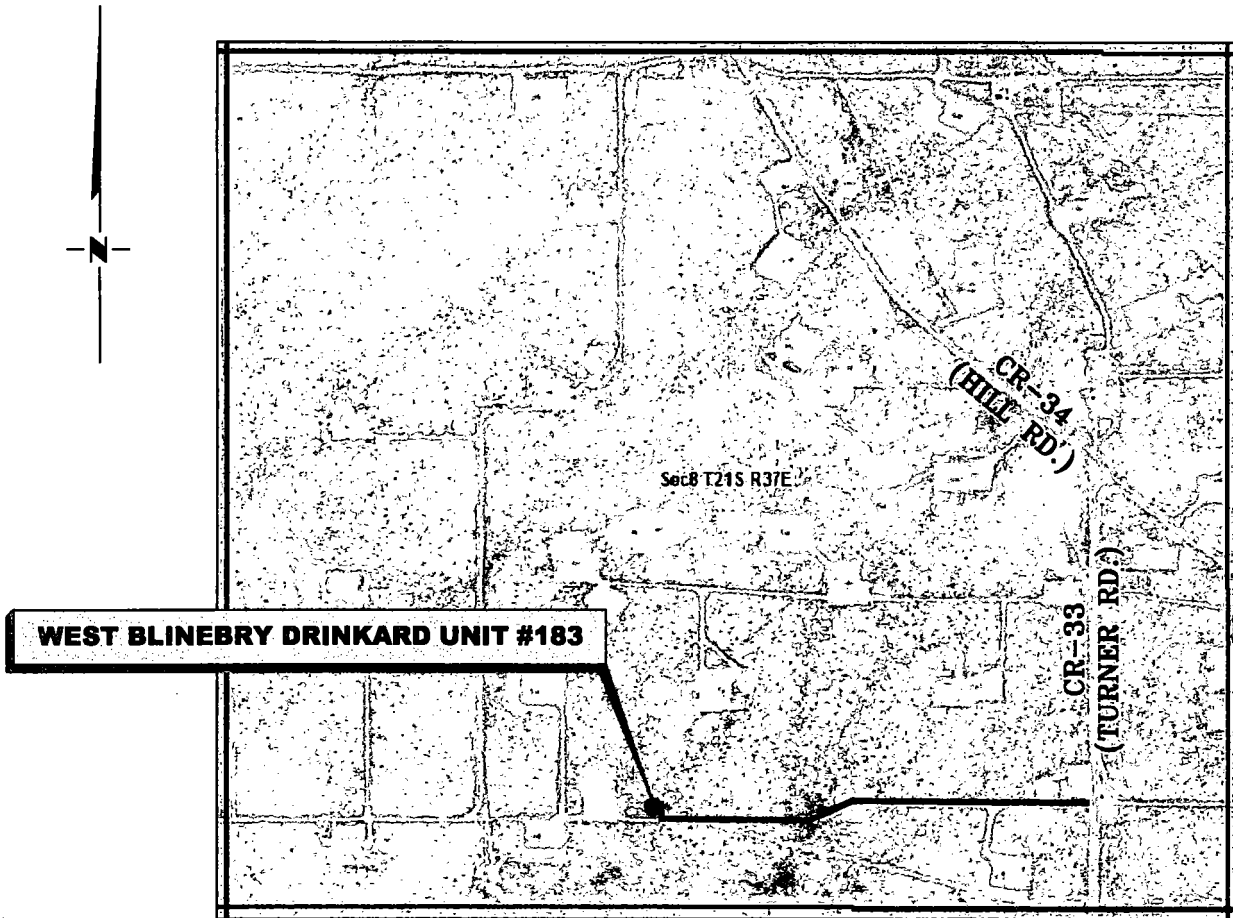
**RRC**

308 W. BROADWAY ST., HOBBS, NM 88240 (575) 964-8200

SCALE: 1" = 100'
DATE: 12-7-16
SURVEYED BY: JM/HD
DRAWN BY: LPS
APPROVED BY: RMH
SHEET: 1 OF 1

# VICINITY MAP

NOT TO SCALE



*From the intersection of CR-34 (Hill Rd.) and CR-33 (Turner Rd.)  
Go South on CR-33 approx. 0.3 miles to a lease road on the right;  
Turn right and go West approx. 0.4 miles to lease road on the right;  
Turn right and go North approx. 205 feet to location on the left.*

**SECTION 8, TWP. 21 SOUTH, RGE. 37 EAST,  
N. M. P. M., LEA CO., NEW MEXICO**

OPERATOR: Apache Corporation  
LEASE: West Blinebry Drinkard Unit  
WELL NO.: 183

LOCATION: 730' FSL & 2215' FWL  
ELEVATION: 3501'

Firm No.: TX 10193838 NM 4655451

Copyright 2016 - All Rights Reserved

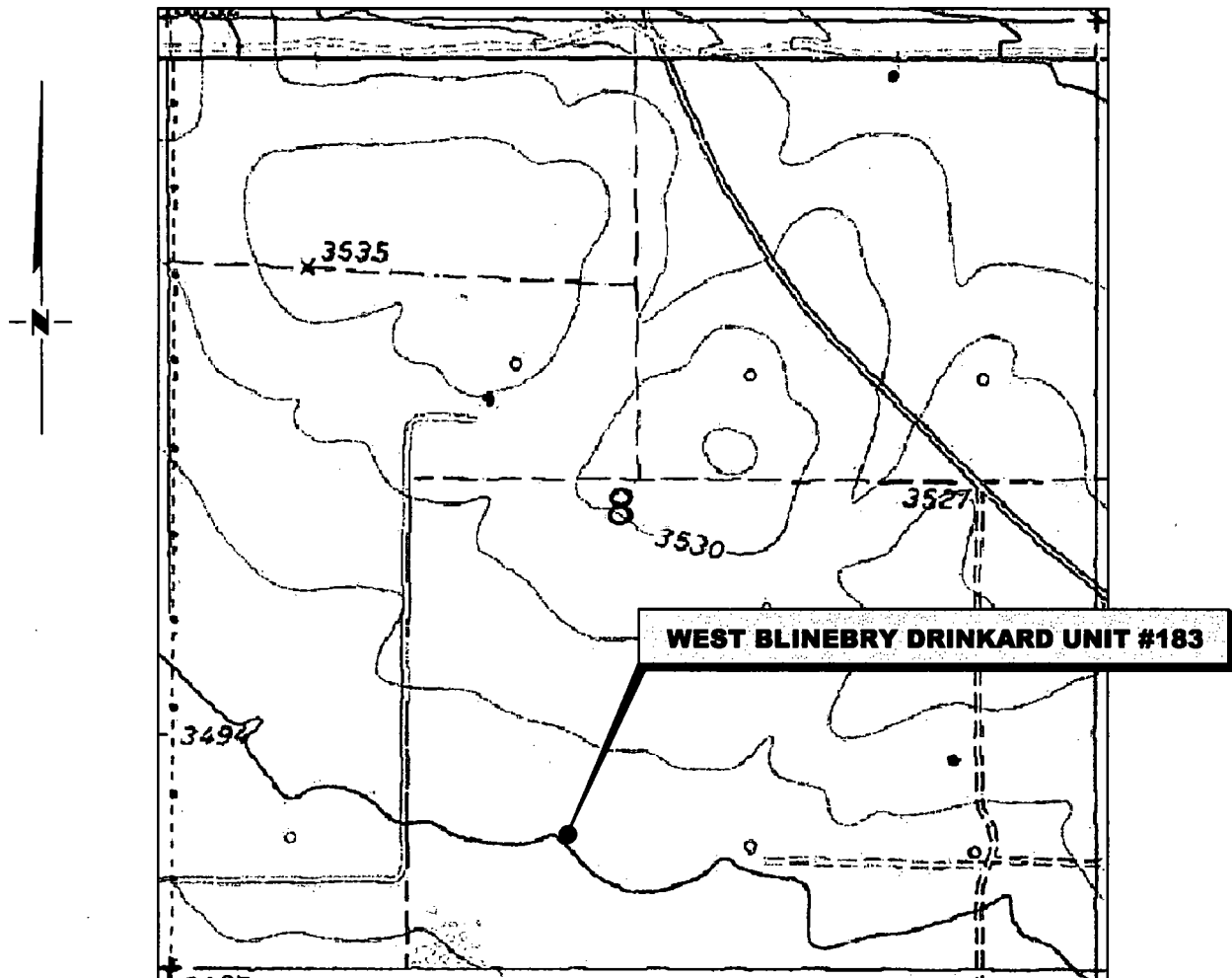
NO.	REVISION	DATE
JOB NO.:	LS1611394	
DWG. NO.:	1611394VM	

# RRC

308 W. BROADWAY ST., HOBBS, NM 88240 (575) 964-8200

SCALE:	N. T. S.
DATE:	12-07-16
SURVEYED BY:	JM/HD
DRAWN BY:	LPS
APPROVED BY:	RMH
SHEET:	1 OF 1

# LOCATION VERIFICATION MAP



*SECTION 8 TWP. 21 SOUTH, RGE. 37 EAST,  
N. M. P. M., LEA CO., NEW MEXICO*

OPERATOR: Apache Corporation  
 LEASE: West Blinebry Drinkard Unit  
 WELL NO.: 183  
 ELEVATION: 3501'

LOCATION: 730' FSL & 2215' FWL  
 CONTOUR INTERVAL: 10'  
 USGS TOPO. SOURCE MAP:  
Eunice, NM (P. E. 1985)

Firm No.: TX 10193838 NM 4655451

Copyright 2016 - All Rights Reserved

NO.	REVISION	DATE
JOB NO.: LS1611394		
DWG. NO.: 1611394LVM		

# RRC

308 W. BROADWAY ST., HOBBS, NM 88240 (575) 964-8200

SCALE: 1" = 1000'
DATE: 12-06-16
SURVEYED BY: JM/HD
DRAWN BY: LPS
APPROVED BY: RMH
SHEET: 1 OF 1