

DISTRICT I
1625 N. French Dr., Hobbs, NM 88240
Phone (505) 393-6161 Fax: (505) 393-0720

DISTRICT II
811 S. First St., Artesia, NM 88210
Phone (505) 748-1263 Fax: (505) 748-9720

DISTRICT III
1000 Rio Brazos Rd., Aztec, NM 87410
Phone (505) 334-6178 Fax: (505) 334-8170

DISTRICT IV
1226 S. St. Francis Dr., Santa Fe, NM 87505
Phone (505) 478-3460 Fax: (505) 478-3462

State of New Mexico
Energy, Minerals and Natural Resources Department

Form C-102
Revised August 1, 2011

Submit one copy to appropriate
District Office

OIL CONSERVATION DIVISION
1226 South St. Francis Dr.
Santa Fe, New Mexico 87505

WELL LOCATION AND ACREAGE DEDICATION PLAT

☐ AMENDED REPORT

| | | |
|----------------------------|---|--|
| API Number 30-025-43907 | Pool Code 13160 | Pool Name Corbin: Bone Spring South |
| Property Code | Property Name GAZELLE "32" STATE 2BS | Well Number 2H |
| OGRID No. 372137 | Operator Name CHISHOLM ENERGY OPERATING, LLC | Elevation 3758' |

Surface Location

| UL or lot No. | Section | Township | Range | Lot Idn | FEET from the | North/SOUTH LINE | FEET from the | East/West Line | County |
|---------------|---------|----------|-------|---------|---------------|------------------|---------------|----------------|--------|
| C | 32 | 18 S | 33 E | | 200 | NORTH | 1370 | WEST | LEA |

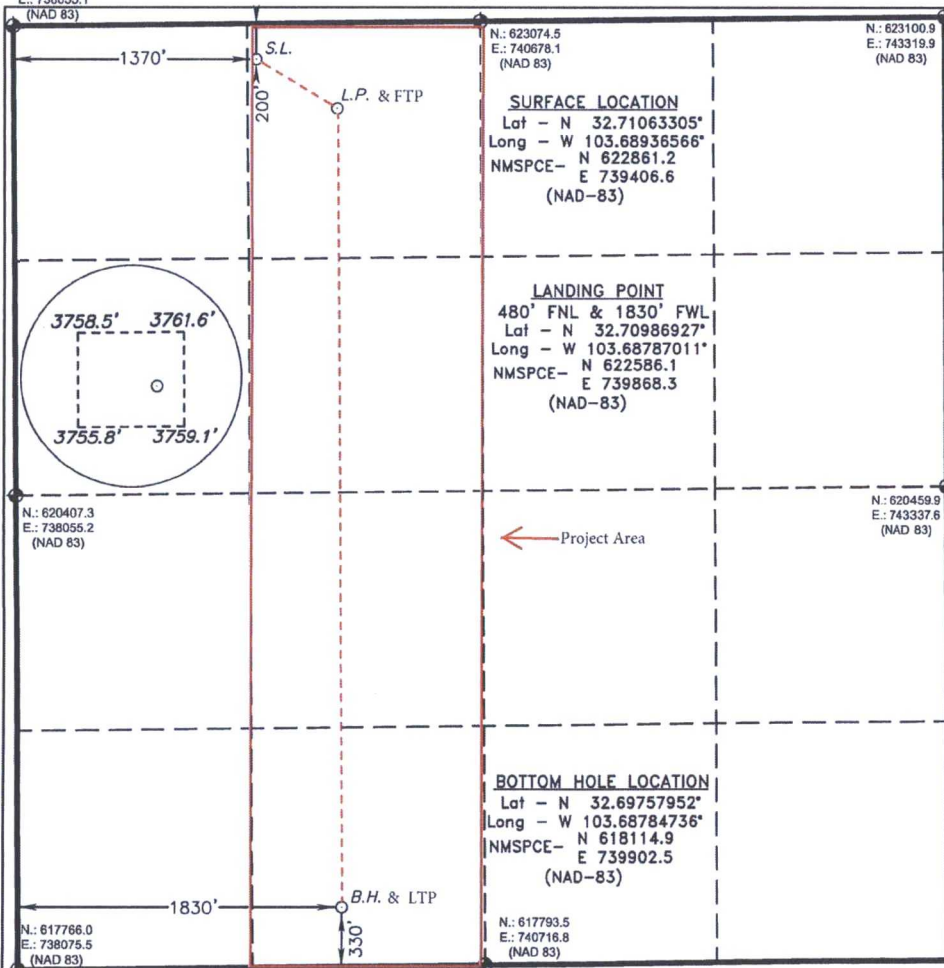
Bottom Hole Location If Different From Surface

| UL or lot No. | Section | Township | Range | Lot Idn | FEET from the | North/SOUTH LINE | FEET from the | East/West Line | County |
|---------------|---------|----------|-------|---------|---------------|------------------|---------------|----------------|--------|
| N | 32 | 18 S | 33 E | | 330 | SOUTH | 1830 | WEST | LEA |

| | | | |
|-----------------|-----------------|--------------------|-----------|
| Dedicated Acres | Joint or Infill | Consolidation Code | Order No. |
|-----------------|-----------------|--------------------|-----------|

NO ALLOWABLE WILL BE ASSIGNED TO THIS COMPLETION UNTIL ALL INTERESTS HAVE BEEN CONSOLIDATED
OR A NON-STANDARD UNIT HAS BEEN APPROVED BY THE DIVISION

N: 623046.9
E: 738035.1
(NAD 83)



OPERATOR CERTIFICATION

I hereby certify that the information contained herein is true and complete to the best of my knowledge and belief, and that this organization either owns a working interest or unleased mineral interest in the land including the proposed bottom hole location or has a right to drill this well at this location pursuant to a contract with an owner of such a mineral or working interest, or to a voluntary pooling agreement or a compulsory pooling order heretofore entered by the division.

Bettie Watson 8/9/17
Signature Date

Bettie Watson
Printed Name
bwatson@chisholmenergy.com
Email Address

SURVEYOR CERTIFICATION

I hereby certify that the well location shown on this plat was plotted from field notes of actual surveys made by me or under my supervision and that the same is true and correct to the best of my belief.

DATE SURVEYED
Signature of Professional Surveyor
7977

Certificate of Survey
GARY L. JONES 7977
Basin Survey

0' 1000' 2000' 3000' 4000'
SCALE: 1" = 2000'
WO Num.: 33206