

District I
1625 N. French Dr., Hobbs, NM 88240
Phone: (575) 393-6161 Fax: (575) 393-0720
District II
811 S. First St., Artesia, NM 88210
Phone: (575) 748-1283 Fax: (575) 748-9720
District III
1000 Rio Brazos Road, Aztec, NM 87410
Phone: (505) 334-6178 Fax: (505) 334-6170
District IV
1220 S. St. Francis Dr., Santa Fe, NM 87505
Phone: (505) 476-3460 Fax: (505) 476-3462

State of New Mexico
Energy, Minerals & Natural Resources
Department
OIL CONSERVATION DIVISION
1220 South St. Francis Dr.
Santa Fe, NM 87505

FORM C-102
Revised August 1, 2011
Submit one copy to appropriate
District Office

☐ AMENDED REPORT

WELL LOCATION AND ACREAGE DEDICATION PLAT

¹ API Number 30-025- 44475	² Pool Code 37580	³ Pool Name Lea; Bone Spring, South
⁴ Property Code 315962 320792	⁵ Property Name DELLA 29 FEDERAL	⁶ Well Number #604H
⁷ GRID No. 7377	⁸ Operator Name EOG RESOURCES, INC.	⁹ Elevation 3676'

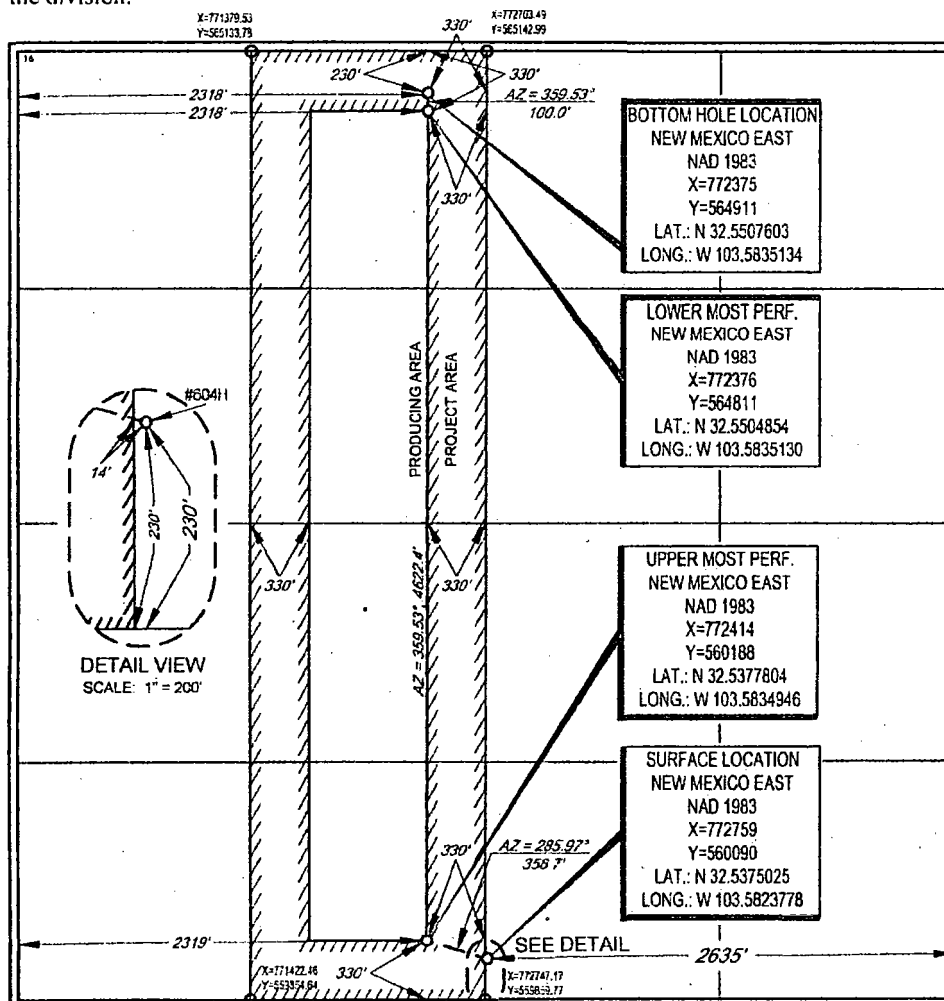
¹⁰Surface Location

U/L or lot no.	Section	Township	Range	Lot Idn	Feet from the	North/South line	Feet from the	East/West line	County
0	29	20-S	34-E	-	230'	SOUTH	2635'	EAST	LEA

U/L or lot no.	Section	Township	Range	Lot Idn	Feet from the	North/South line	Feet from the	East/West line	County
C	29	20-S	34-E	-	230'	NORTH	2318'	WEST	LEA

¹¹ Dedicated Acres 160.00	¹² Joint or Infill	¹³ Consolidation Code	¹⁴ Order No.
---	-------------------------------	----------------------------------	-------------------------

No allowable will be assigned to this completion until all interests have been consolidated or a non-standard unit has been approved by the division.



¹⁷OPERATOR CERTIFICATION

I hereby certify that the information contained herein is true and complete to the best of my knowledge and belief, and that this organization either owns a working interest or undivided mineral interest in the land including the proposed bottom hole location or has a right to drill this well at this location pursuant to a contract with an owner of such a mineral or working interest, or to a voluntary pooling agreement or a compulsory pooling order heretofore entered by the division.

Stan Wagner 7/26/17
Signature Date

Stan Wagner

Printed Name

E-mail Address

¹⁸SURVEYOR CERTIFICATION

I hereby certify that the well location shown on this plat was plotted from field notes of actual surveys made by me or under my supervision, and that the same is true to the best of my belief.

03/31/2017
Date of Survey
Signature and Seal of Professional Surveyor
18329
PROFESSIONAL SURVEYOR
Certificate Number