

DISTRICT I  
1625 N. French Dr., Hobbs, NM 88240  
Phone: (575) 393-6161 Fax: (575) 393-0720  
DISTRICT II  
811 S. First St., Artesia, NM 88210  
Phone: (505) 748-1283 Fax: (505) 748-9720  
DISTRICT III  
1000 Rio Brazos Road, Aztec, NM 87410  
Phone: (505) 334-6178 Fax: (505) 334-6170  
DISTRICT IV  
1220 S. St. Francis Dr., Santa Fe, NM 87505  
Phone: (505) 476-3460 Fax: (505) 476-3462

State of New Mexico  
Energy, Minerals & Natural Resources Department  
OIL CONSERVATION DIVISION  
1220 South St. Francis Dr.  
Santa Fe, New Mexico 87505

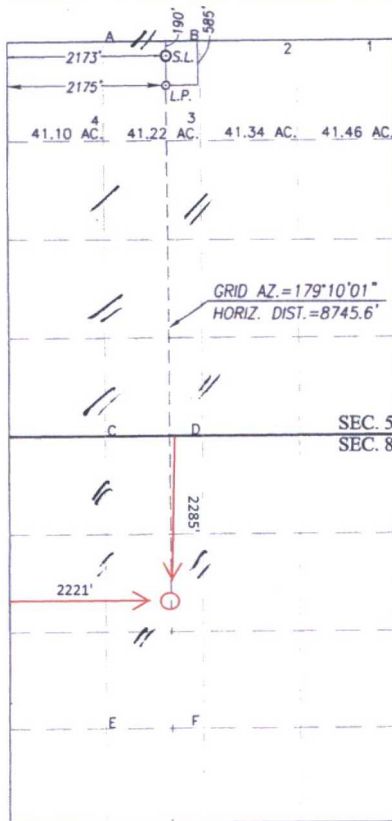
Form C-102  
Revised August 1, 2011  
Submit one copy to appropriate  
District Office

□ AMENDED REPORT

WELL LOCATION AND ACREAGE DEDICATION PLAT

API Number <b>30-025-K4495</b>		Pool Code 98176		Pool Name WC-025 G-08 S203517M; UPR WC	
Property Code <b>315700 320711</b>		Property Name EAGLE CLAW FEDERAL COM			Well Number 2H
OGRID No. 249099		Operator Name CAZA OPERATING, LLC			Elevation 3694'
Surface Location					
UL or lot No. 3	Section 5	Township 20-S	Range 35-E	Lot Idn 190	Feet from the NORTH 2173
East/West line WEST		County LEA			
Bottom Hole Location If Different From Surface					
UL or lot No. F	Section 8	Township 20-S	Range 35-E	Lot Idn 2285	Feet from the North 2221
East/West line WEST		County LEA			
Landing Point Location					
UL or lot No. 3	Section 5	Township 20-S	Range 35-E	Lot Idn 585	Feet from the NORTH 2175
East/West line WEST		County LEA			
Dedicated Acres <b>280 240</b>	Joint or Infill	Consolidation Code	Order No.		

NO ALLOWABLE WILL BE ASSIGNED TO THIS COMPLETION UNTIL ALL INTERESTS HAVE BEEN CONSOLIDATED OR A NON-STANDARD UNIT HAS BEEN APPROVED BY THE DIVISION



SCALE: 1"=2000'

GEODETIC COORDINATES NAD 83 NME SURFACE LOCATION Y= 586362.7 N X= 803788.4 E LAT.=32.609071° N LONG.=103.481016° W	GEODETIC COORDINATES NAD 27 NME SURFACE LOCATION Y= 586299.7 N X= 762607.5 E LAT.=32.608947° N LONG.=103.480527° W
LANDING POINT NAD 83 NME Y= 585967.8 N X= 803794.1 E LAT.=32.607985° N LONG.=103.481008° W	LANDING POINT NAD 27 NME Y= 585904.8 N X= 762613.2 E LAT.=32.607862° N LONG.=103.480519° W

CORNER COORDINATES TABLE  
NAD 27 NME

A - Y= 586481.3 N, X= 761754.6 E
B - Y= 586494.3 N, X= 763076.1 E
C - Y= 581159.2 N, X= 761805.1 E
D - Y= 581169.2 N, X= 763125.4 E
E - Y= 577196.2 N, X= 761837.3 E
F - Y= 577206.6 N, X= 763158.0 E

CORNER COORDINATES TABLE  
NAD 83 NME

A - Y= 586544.3 N, X= 802935.5 E
B - Y= 586557.3 N, X= 804257.0 E
C - Y= 581222.1 N, X= 802986.1 E
D - Y= 581232.1 N, X= 804306.5 E
E - Y= 577258.9 N, X= 803018.5 E
F - Y= 577269.3 N, X= 804339.2 E

REVISED BHL (NAD83)

Y=578939.63 N  
X=803894.58 E  
Lat.=32.613403° N  
Long.=103.48063° W

OPERATOR CERTIFICATION

I hereby certify that the information herein is true and complete to the best of my knowledge and belief, and that this organization either owns a working interest or unleased mineral interest in the land including the proposed bottom hole location or has a right to drill this well at this location pursuant to a contract with an owner of such mineral or working interest, or to a voluntary pooling agreement or a compulsory pooling order heretofore entered by the division.

Signature  
Date  
12/27/2017

Steve Morris

Printed Name

steve.morris@mojoenergy.com  
E-mail Address

SURVEYOR CERTIFICATION

I hereby certify that the well location shown on this plat was plotted from field notes of actual surveys made by me or under my supervision, and that the same is true and correct to the best of my belief.

DECEMBER 14, 2016

Date of Survey  
Signature & Seal of Professional Surveyor:

RONALD J. EIDSON  
NEW MEXICO  
3239  
Professional Surveyor  
Certificate Number  
Curry O. Eidson 12641  
Ronald J. Eidson 3239  
ACK JWSC W.O.: 16.11.0991

HOBBS OCD  
FEB 19 2018  
RECEIVED