

District I
1625 N. French Dr., Hobbs, NM 88240
Phone: (575) 393-6161 Fax: (575) 393-0720
District II
811 S. First St., Artesia, NM 88210
Phone: (575) 748-1283 Fax: (575) 748-9720
District III
1000 Rio Brazos Road, Aztec, NM 87410
Phone: (505) 334-6178 Fax: (505) 334-6170
District IV
1220 S. St. Francis Dr., Santa Fe, NM 87505
Phone: (505) 476-3460 Fax: (505) 476-3462

State of New Mexico
Energy, Minerals & Natural Resources Department
OIL CONSERVATION DIVISION
1220 South St. Francis Dr.
Santa Fe, NM 87505

Form C-102
Revised August 1, 2011
Submit one copy to appropriate
District Office

AMENDED REPORT

WELL LOCATION AND ACREAGE DEDICATION PLAT

¹ API Number 30-025-44663	² Pool Code 2200 98078 WC-025 G-09 52432M; WOLF BONE	³ Pool Name
⁴ Property Code 321167	⁵ Property Name BLUEBERRY HILL FEE 24-35-19 TB	⁶ Well Number 10H
⁷ OGRID No. 372098	⁸ Operator Name MARATHON OIL PERMIAN LLC	⁹ Elevation 3337'

¹⁰ Surface Location

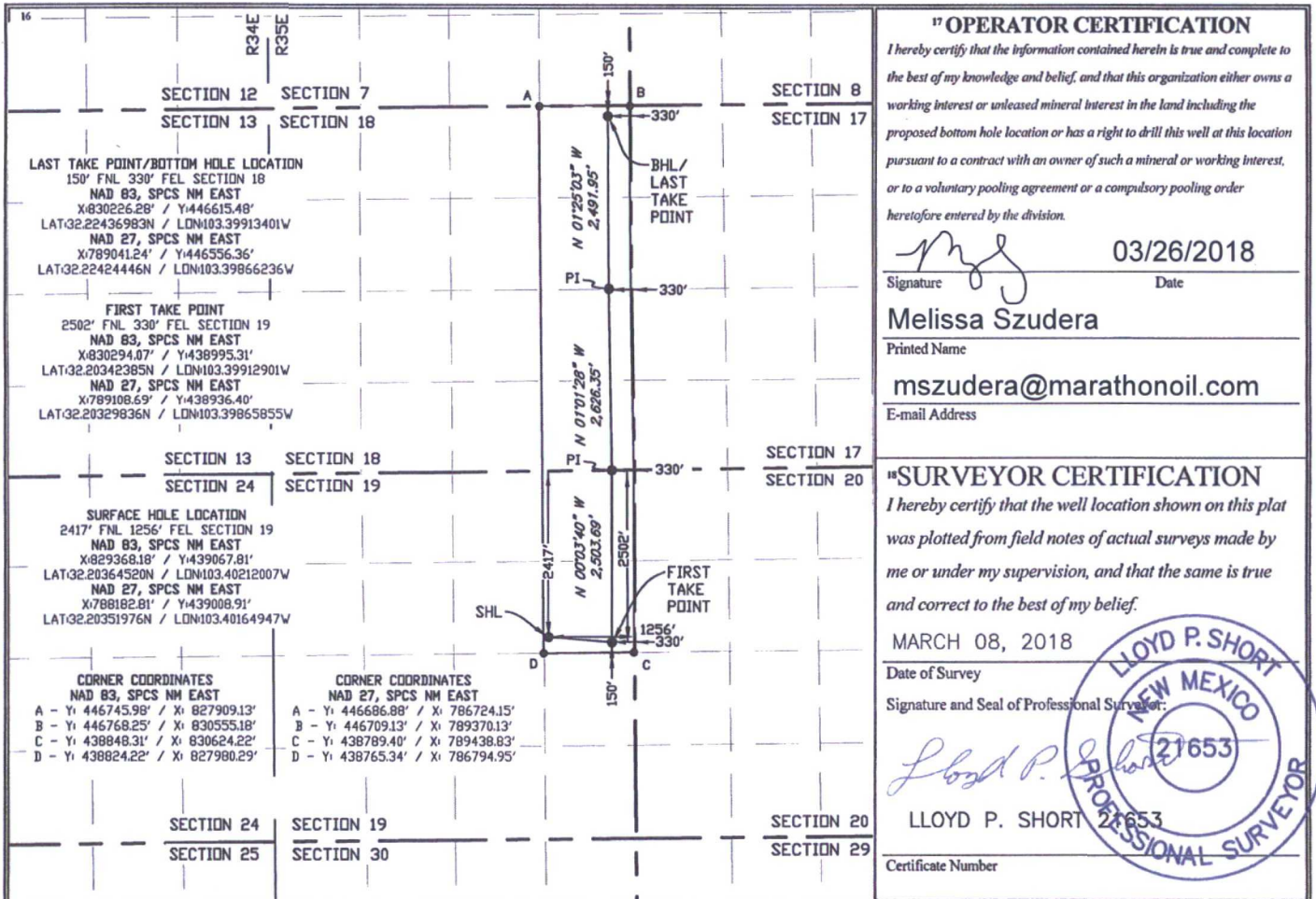
UL or lot no.	Section	Township	Range	Lot Idn	Feet from the	North/South line	Feet from the	East/West line	County
H	19	24S	35E		2417	NORTH	1256	EAST	LEA

¹¹ Bottom Hole Location If Different From Surface

UL or lot no.	Section	Township	Range	Lot Idn	Feet from the	North/South line	Feet from the	East/West line	County
A	18	24S	35E		150	NORTH	330	EAST	LEA

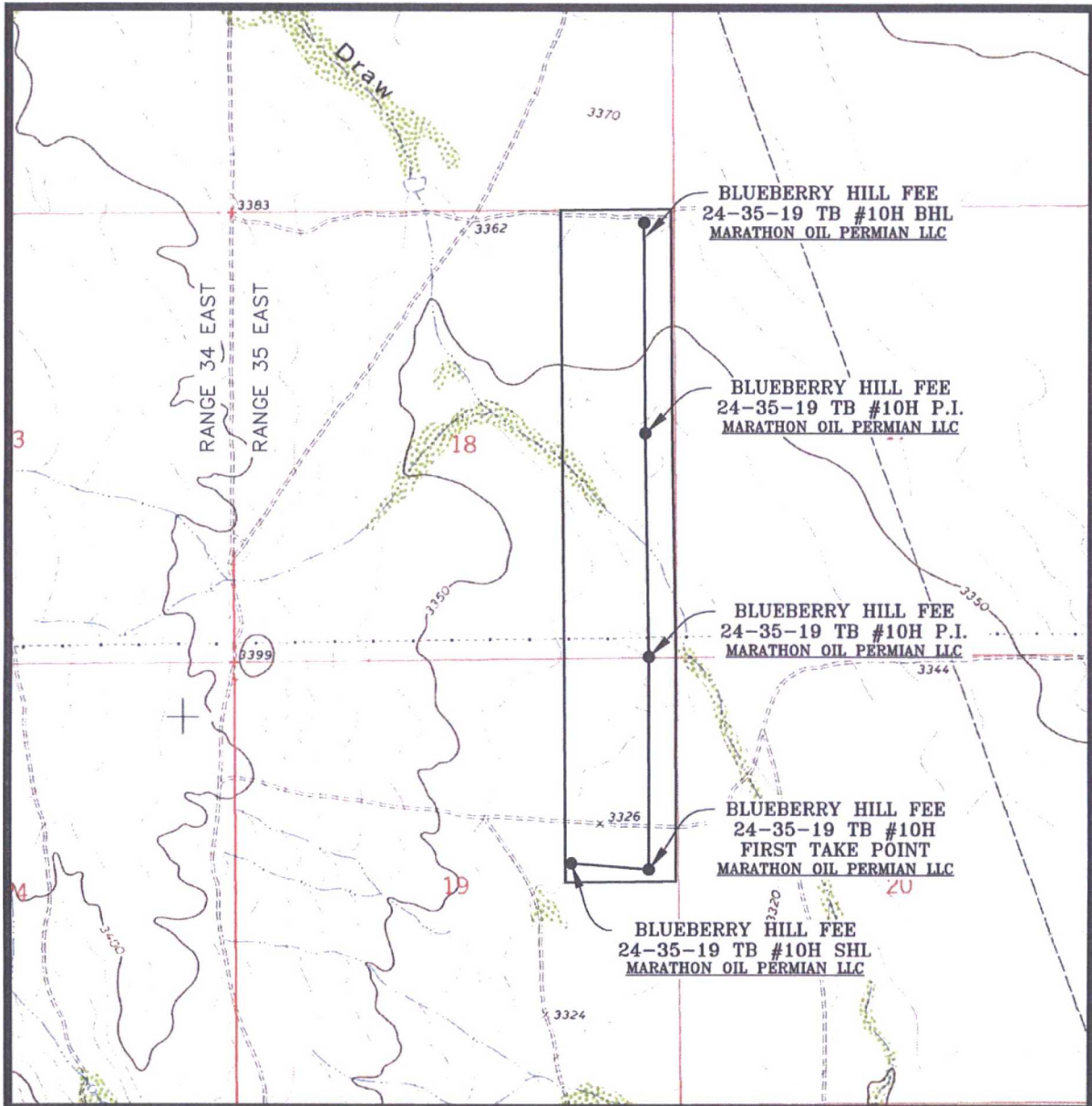
¹² Dedicated Acres 240.00	¹³ Joint or Infill	¹⁴ Consolidation Code	¹⁵ Order No.
---	-------------------------------	----------------------------------	-------------------------

No allowable will be assigned to this completion until all interests have been consolidated or a non-standard unit has been approved by the division.



2	03/02/2018	CAP
REV.	DATE	BY

LOCATION VERIFICATION MAP

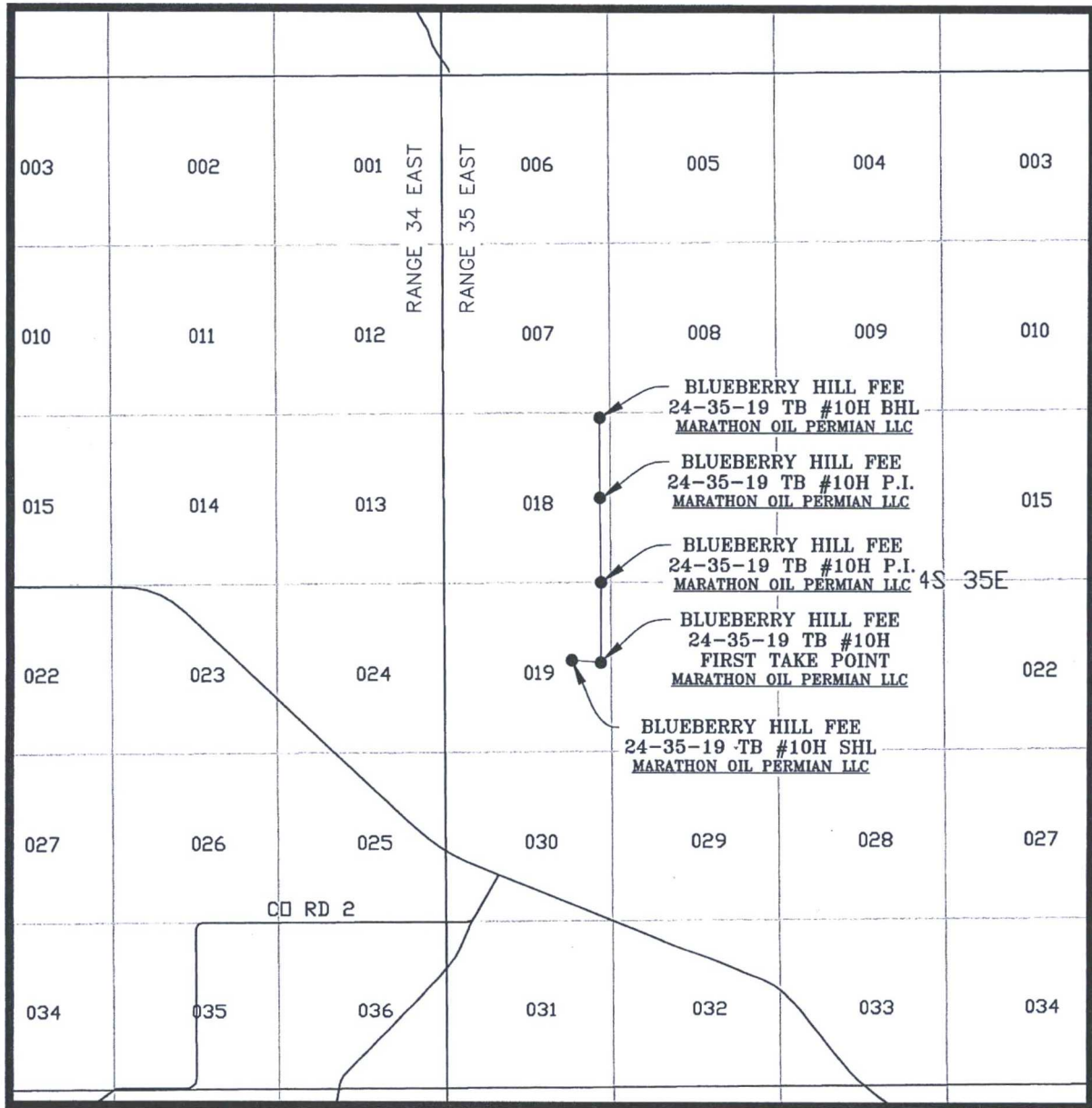


SEC. 19 TWP. 24-S RGE. 35-E
 SURVEY: N.M.P.M.
 COUNTY: LEA
 DESCRIPTION: 2417' FNL & 1256' FEL
 ELEVATION: 3337'
 OPERATOR: MARATHON OIL PERMIAN LLC
 LEASE: BLUEBERRY HILL FEE 24-35-19
 U.S.G.S. TOPOGRAPHIC MAP: WOODLEY FLATS, N.M.

SCALE: 1" = 2000'
 CONTOUR INTERVAL = 10'

PREPARED BY:
 R-SQUARED GLOBAL, LLC
 1309 LOUISVILLE AVENUE, MONROE, LA 71201
 318-323-6900 OFFICE
 JOB No. R3637_005

VICINITY MAP



SEC. 19 TWP. 24-S RGE. 35-E
 SURVEY: N.M.P.M.
 COUNTY: LEA
 DESCRIPTION: 2417' FNL & 1256' FEL
 ELEVATION: 3337'
 OPERATOR: MARATHON OIL PERMIAN LLC
 LEASE: BLUEBERRY HILL FEE 24-35-19
 U.S.G.S. TOPOGRAPHIC MAP: WOODLEY FLATS, N.M.

SCALE: 1" = 1 MILE

PREPARED BY:
 R-SQUARED GLOBAL, LLC
 1309 LOUISVILLE AVENUE, MONROE, LA 71201
 318-323-6900 OFFICE
 JOB No. R3837_005