

District I
1625 N. French Dr., Hobbs, NM 88240
Phone: (575) 393-6161 Fax: (575) 393-0720
District II
811 S. First St., Artesia, NM 88210
Phone: (575) 748-1283 Fax: (575) 748-9720
District III
1000 Rio Bravo Road, Aztec, NM 87410
Phone: (505) 334-6178 Fax: (505) 334-6170
District IV
1220 S. St. Francis Dr., Santa Fe, NM 87505
Phone: (505) 476-3460 Fax: (505) 476-3462

State of New Mexico
Energy, Minerals & Natural Resources Department
OIL CONSERVATION DIVISION
1220 South St. Francis Dr.
Santa Fe, NM 87505

Form C-102
Revised August 1, 2011
Submit one copy to appropriate
District Office

AMENDED REPORT
(As-Drilled)

WELL LOCATION AND ACREAGE DEDICATION PLAT

API Number 30-025-44101	Pool Code 96229	Pool Name Mesa Verde Bone Spring
Property Code 320828	Property Name MESA VERDE BS UNIT	Well Number 1H
OGRID No. 16696	Operator Name OXY USA INC.	Elevation 3563.6'

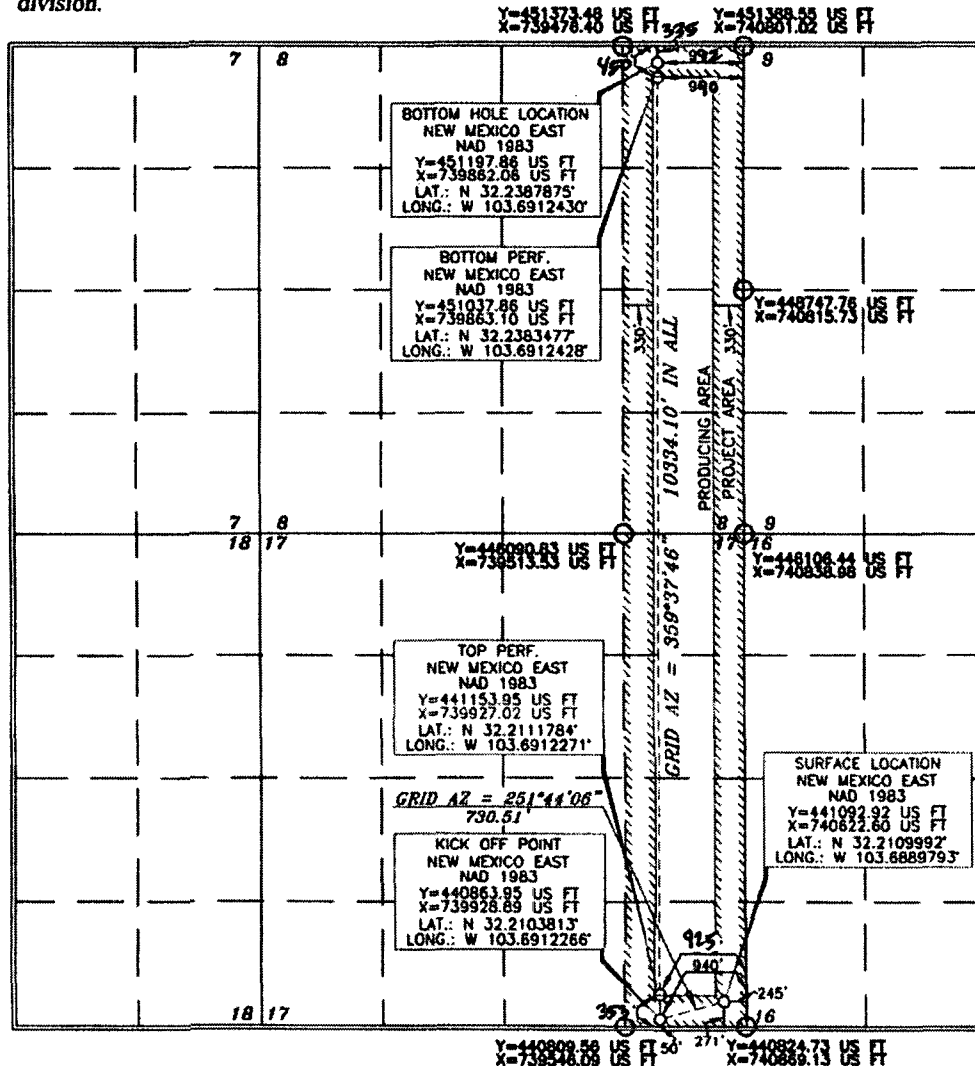
Surface Location

UL or lot no.	Section	Township	Range	Lot Idn	Feet from the	North/South line	Feet from the	East/West line	County
P	17	24 SOUTH	32 EAST, N.M.P.M.		271'	SOUTH	245'	EAST	LEA

Bottom Hole Location If Different From Surface

UL or lot no.	Section	Township	Range	Lot Idn	Feet from the	North/South line	Feet from the	East/West line	County
A	8	24 SOUTH	32 EAST, N.M.P.M.		180' 335'	NORTH	992' 992'	EAST	LEA
Dedicated Acres 320	Joint or Infill Y	Consolidation Code	Order No.	LTP - 450 FNL 990 FEL FTP - 353 FSL 925 FEL					

No allowable will be assigned to this completion until all interests have been consolidated or a non-standard unit has been approved by the division.



OPERATOR CERTIFICATION

I hereby certify that the information contained herein is true and complete to the best of my knowledge and belief, and that this organization either owns a working interest or unleased mineral interest in the land including the proposed bottom hole location or has a right to drill this well at this location pursuant to a contract with an owner of such a mineral or working interest, or to a voluntary pooling agreement or a compulsory pooling order heretofore entered by the division.

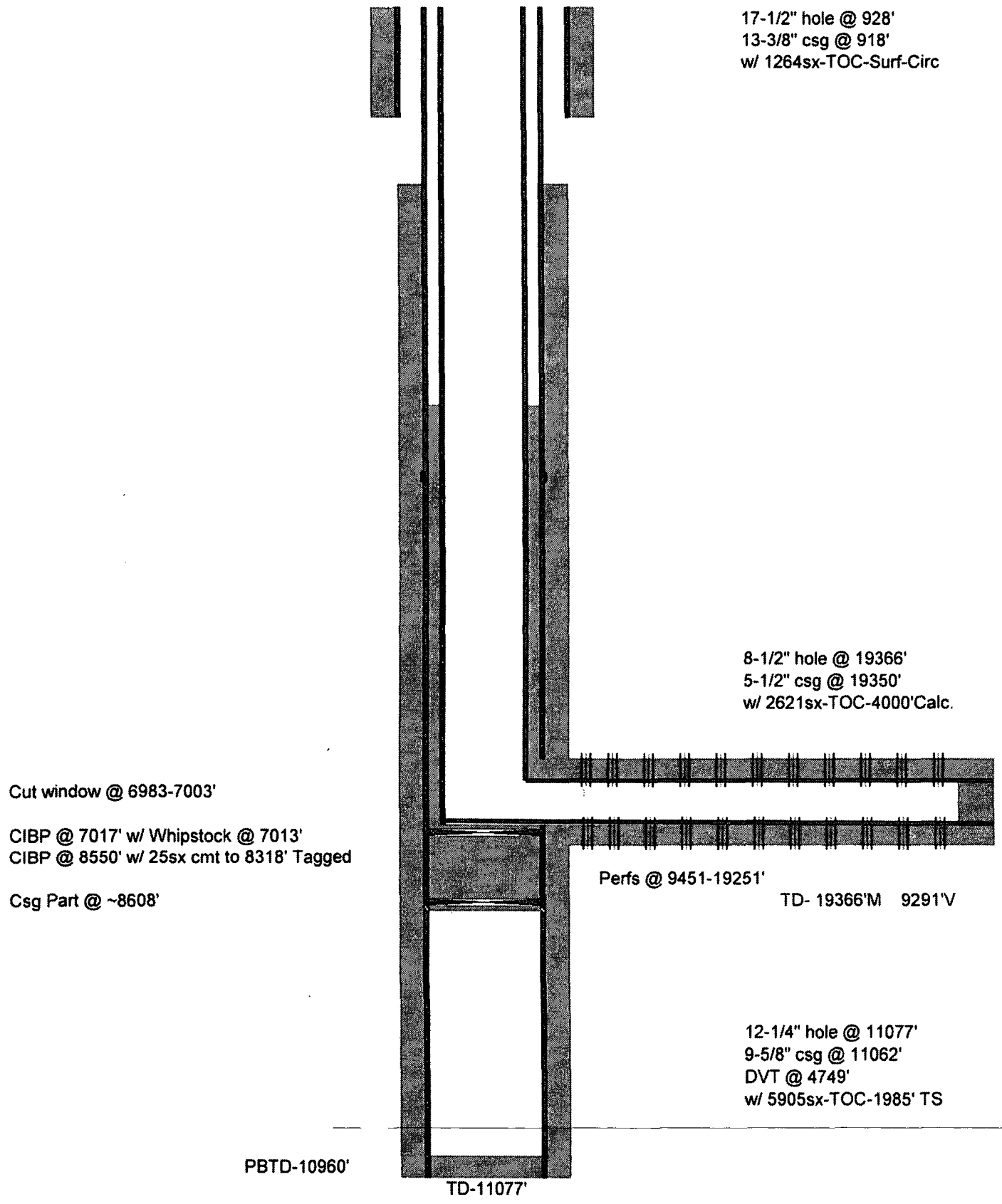
[Signature] 8/16/18
Date
Jana Mendiola
Printed Name
jaramela-mendiola@oxy.com
E-mail Address

SURVEYOR CERTIFICATION

I hereby certify that the well location shown on this plat was plotted from available professional surveys made by me or under my supervision and that the same is true and correct to the best of my belief.

[Signature]
Date of Survey
SEPTEMBER 20, 2018
Signature and Seal of Professional Surveyor
Certificate Number 15079

OXY USA Inc.
Mesa Verde Bone Spring Unit #1H
API No. 30-025-44101



17-1/2" hole @ 928'
13-3/8" csg @ 918'
w/ 1264sx-TOC-Surf-Circ

8-1/2" hole @ 19366'
5-1/2" csg @ 19350'
w/ 2621sx-TOC-4000' Calc.

Cut window @ 6983-7003'

CIBP @ 7017' w/ Whipstock @ 7013'
CIBP @ 8550' w/ 25sx cmt to 8318' Tagged

Csg Part @ ~8608'

Perfs @ 9451-19251'

TD- 19366'M 9291'V

12-1/4" hole @ 11077'
9-5/8" csg @ 11062'
DVT @ 4749'
w/ 5905sx-TOC-1985' TS

PBTD-10960'

TD-11077'