

UNITED STATES  
DEPARTMENT OF THE INTERIOR  
BUREAU OF LAND MANAGEMENT

OCD Hobbs

FORM APPROVED  
OMB No. 1004-0137  
Expires: July 31, 2010

## WELL COMPLETION OR RECOMPLETION REPORT AND LOG

5. Lease Serial No.  
NMNM118727

- 1a. Type of Well ☒ Oil Well ☐ Gas Well ☐ Dry ☐ Other  
b. Type of Completion ☒ New Well ☐ Work Over ☐ Deepen ☐ Plug Back ☐ Diff. Resvr.  
Other \_\_\_\_\_

6. If Indian, Allottee or Tribe Name

7. Unit or CA Agreement Name and No.

2. Name of Operator  
EOG RESOURCES INCContact: KAY MADDOX  
E-Mail: KAY\_MADDOX@EOGRESOURCES.COM8. Lease Name and Well No.  
ORRTANNA 20 FED 705H3. Address 1111 BAGBY SKY LOBBY2  
HOUSTON, TX 770023a. Phone No. (Include area code)  
Ph: 432-686-36589. API Well No.  
30-025-43745-00-S1

4. Location of Well (Report location clearly and in accordance with Federal requirements)\*

At surface SWSE 610FSL 2455FEL 32.023439 N Lat, 103.593366 W Lon

At top prod interval reported below SWSE 489FSL 2265FEL 32.023109 N Lat, 103.593366 W Lon

At total depth NWNE 250FNL 2294FEL 32.035583 N Lat, 103.593155 W Lon

10. Field and Pool, or Exploratory  
SANDERS TANK-UPR WOLFCAMP11. Sec., T., R., M., or Block and Survey  
or Area Sec 20 T26S R33E Mer NMP12. County or Parish  
LEA13. State  
NM14. Date Spudded  
05/07/201815. Date T.D. Reached  
06/02/201816. Date Completed  
☐ D & A ☒ Ready to Prod.  
08/29/201817. Elevations (DF, KB, RT, GL)\*  
3252 GL18. Total Depth: MD  
TVD 17153  
1229019. Plug Back T.D.: MD  
TVD 17126  
1229020. Depth Bridge Plug Set: MD  
TVD21. Type Electric & Other Mechanical Logs Run (Submit copy of each)  
3252 GL22. Was well cored? ☒ No ☐ Yes (Submit analysis)  
Was DST run? ☒ No ☐ Yes (Submit analysis)  
Directional Survey? ☐ No ☒ Yes (Submit analysis)

## 23. Casing and Liner Record (Report all strings set in well)

Hole Size	Size/Grade	Wt. (#/ft.)	Top (MD)	Bottom (MD)	Stage Cementer Depth	No. of Sks. & Type of Cement	Slurry Vol. (BBL)	Cement Top*	Amount Pulled
17.500	13.375 J55	54.5		955		850		0	
12.250	9.625 J55	40.0		4832		1640		0	
8.750	7.625 HCP110	29.7		11679		520		1040	
6.750	5.500 HCP110	20.0		17138		540		9330	

## 24. Tubing Record

Size	Depth Set (MD)	Packer Depth (MD)	Size	Depth Set (MD)	Packer Depth (MD)	Size	Depth Set (MD)	Packer Depth (MD)

## 25. Producing Intervals

## 26. Perforation Record

Formation	Top	Bottom	Perforated Interval	Size	No. Holes	Perf. Status
A) WOLFCAMP	12610	17126	12610 TO 17126	3.000	900	OPEN
B)						
C)						
D)						

## 27. Acid, Fracture, Treatment, Cement Squeeze, Etc.

Depth Interval	Amount and Type of Material
12610 TO 17126	11,174,060 LBS PROPPANT, 166,006 BBLS LOAD FLUID

## 28. Production - Interval A

Date First Produced	Test Date	Hours Tested	Test Production	Oil BBL	Gas MCF	Water BBL	Oil Gravity Corr. API	Gas Gravity	Production Method
08/29/2018	09/03/2018	24	→	1715.0	3496.0	1166.0	45.0		FLows FROM WELL
Choke Size	Tbg. Press. Flwg. SI	Csg. Press.	24 Hr. Rate	Oil BBL	Gas MCF	Water BBL	Gas:Oil Ratio	Well Status	
40	SI	1412.0	→	1715	3496	1166	2038	Flow	

## 28a. Production - Interval B

Date First Produced	Test Date	Hours Tested	Test Production	Oil BBL	Gas MCF	Water BBL	Oil Gravity Corr. API	Gas Gravity	Production Method
			→						
Choke Size	Tbg. Press. Flwg. SI	Csg. Press.	24 Hr. Rate	Oil BBL	Gas MCF	Water BBL	Gas:Oil Ratio	Well Status	
	SI		→						

ACCEPTED FOR RECORD

NOV 1 1 2018  
BUREAU OF LAND MANAGEMENT  
CARLSBAD FIELD OFFICE

(See Instructions and spaces for additional data on reverse side)

ELECTRONIC SUBMISSION #437296 VERIFIED BY THE BLM WELL INFORMATION SYSTEM

\*\* BLM REVISED \*\* BLM REVISED \*\* BLM REVISED \*\* BLM REVISED \*\* BLM REVISED \*\*

Reclamation Due: 2/29/2019

KZ

## 28b. Production - Interval C

Date First Produced	Test Date	Hours Tested	Test Production	Oil BBL	Gas MCF	Water BBL	Oil Gravity Corr. API	Gas Gravity	Production Method
			→						
Choke Size	Tbg. Press. Flwg. SI	Csg. Press.	24 Hr. Rate	Oil BBL	Gas MCF	Water BBL	Gas:Oil Ratio	Well Status	
			→						

## 28c. Production - Interval D

Date First Produced	Test Date	Hours Tested	Test Production	Oil BBL	Gas MCF	Water BBL	Oil Gravity Corr. API	Gas Gravity	Production Method
			→						
Choke Size	Tbg. Press. Flwg. SI	Csg. Press.	24 Hr. Rate	Oil BBL	Gas MCF	Water BBL	Gas:Oil Ratio	Well Status	
			→						

29. Disposition of Gas(Sold, used for fuel, vented, etc.)  
SOLD

## 30. Summary of Porous Zones (Include Aquifers):

Show all important zones of porosity and contents thereof: Cored intervals and all drill-stem tests, including depth interval tested, cushion used, time tool open, flowing and shut-in pressures and recoveries.

## 31. Formation (Log) Markers

Formation	Top	Bottom	Descriptions, Contents, etc.	Name	Top
					Meas. Depth
RUSTLER	784		BARREN	RUSTLER	784
TOP OF SALT	1127		BARREN	TOP OF SALT	1127
BASE OF SALT	4677		BARREN	BASE OF SALT	4677
BRUSHY CANYON	7616		OIL & GAS	BRUSHY CANYON	7616
BONE SPRING 1ST	10021		OIL & GAS	BONE SPRING 1ST	10021
BONE SPRING 2ND	10624		OIL & GAS	BONE SPRING 2ND	10624
BONE SPRING 3RD	11745		OIL & GAS	BONE SPRING 3RD	11745
WOLFCAMP	12172		OIL & GAS	WOLFCAMP	12172

32. Additional remarks (include plugging procedure):  
PLEASE REFERENCE ATTACHMENTS

## 33. Circle enclosed attachments:

- |   |                    |               |                       |
|---|--------------------|---------------|-----------------------|
| 1. Electrical/Mechanical Logs (1 full set req'd.)     | 2. Geologic Report | 3. DST Report | 4. Directional Survey |
| 5. Sundry Notice for plugging and cement verification | 6. Core Analysis   | 7 Other:      |                       |

34. I hereby certify that the foregoing and attached information is complete and correct as determined from all available records (see attached instructions):

**Electronic Submission #437296 Verified by the BLM Well Information System.**  
**For EOG RESOURCES INC, sent to the Hobbs**  
**Committed to AFMSS for processing by DUNCAN WHITLOCK on 10/10/2018 (19DW0012SE)**

Name (please print) KAY MADDOXTitle REGULATORY SPECIALIST

Signature \_\_\_\_\_ (Electronic Submission)

Date 09/26/2018

Title 18 U.S.C. Section 1001 and Title 43 U.S.C. Section 1212, make it a crime for any person knowingly and willfully to make to any department or agency of the United States any false, fictitious or fraudulent statements or representations as to any matter within its jurisdiction.

**\*\* REVISED \*\* REVISED \*\* REVISED \*\* REVISED \*\* REVISED \*\* REVISED \*\* REVISED \*\* REVISED \*\***

District I  
1625 N. French Dr., Hobbs, NM 88240  
Phone: (575) 393-6161 Fax: (575) 393-0720  
District II  
811 S. First St., Artesia, NM 88210  
Phone: (575) 748-1283 Fax: (575) 748-9720  
District III  
1000 Rio Brazos Road, Aztec, NM 87410  
Phone: (505) 334-6178 Fax: (505) 334-6170  
District IV  
1220 S. St. Francis Dr., Santa Fe, NM 87505  
Phone: (505) 476-3460 Fax: (505) 476-3462

State of New Mexico  
Energy, Minerals & Natural Resources  
Department  
OIL CONSERVATION DIVISION  
1220 South St. Francis Dr.  
Santa Fe, NM 87505

FORM C-102

Revised August 1, 2011

Submit one copy to appropriate

District Office

☐ AMENDED REPORT

WELL LOCATION AND ACREAGE DEDICATION PLAT

<sup>1</sup> API Number 30-025- <b>43745</b>	<sup>2</sup> Pool Code 98097	<sup>3</sup> Pool Name <b>SANDERS TANK; Upper Wolfcamp</b>
<sup>4</sup> Property Code <b>316102</b>	<sup>5</sup> Property Name <b>ORRTANNA 20 FED</b>	
<sup>6</sup> Well Number <b>#705H</b>	<sup>7</sup> Operator Name <b>EOG RESOURCES, INC.</b>	
<sup>8</sup> OGRIID No. <b>7377</b>	<sup>9</sup> Elevation <b>3252'</b>	

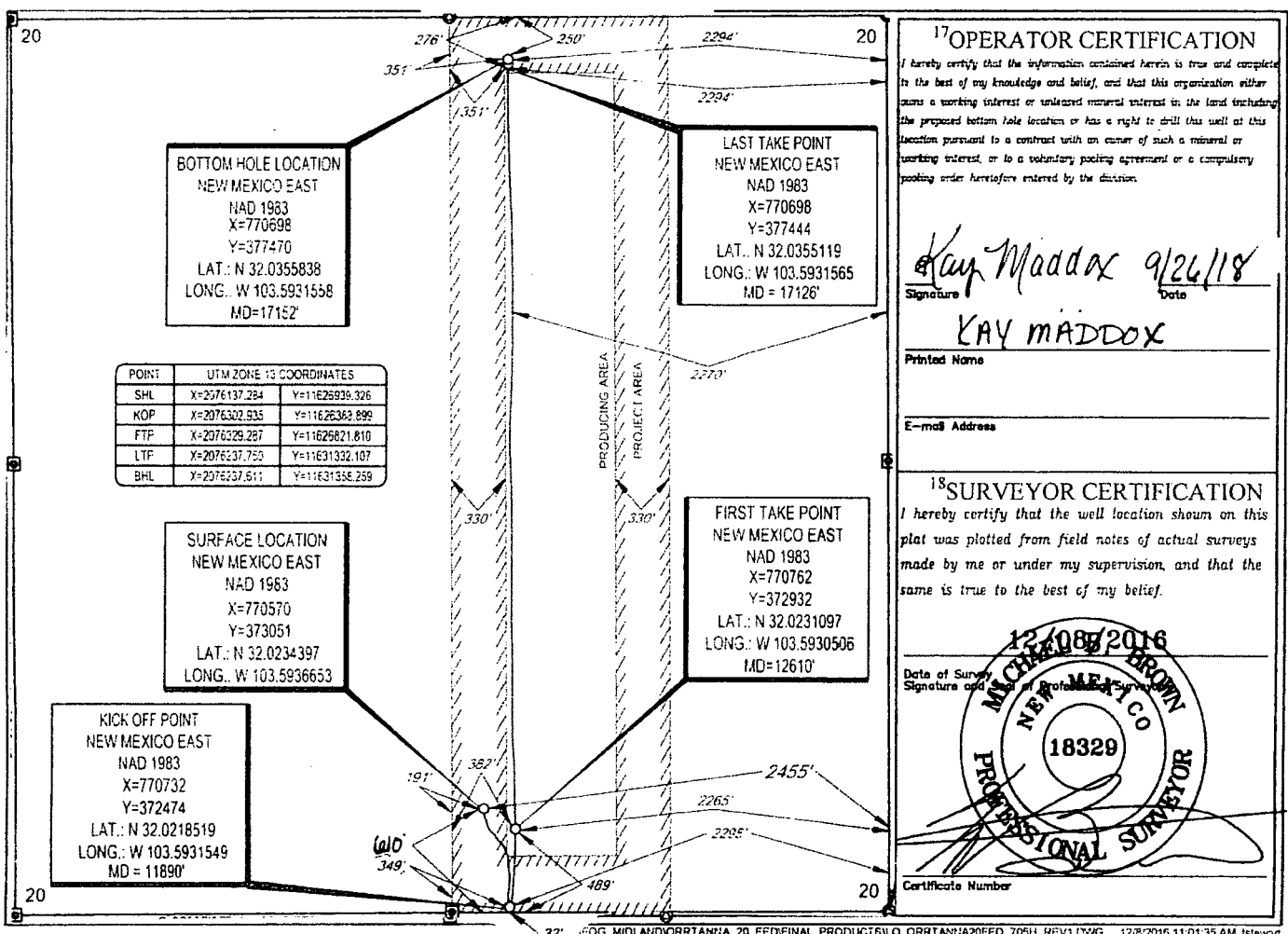
<sup>10</sup>Surface Location

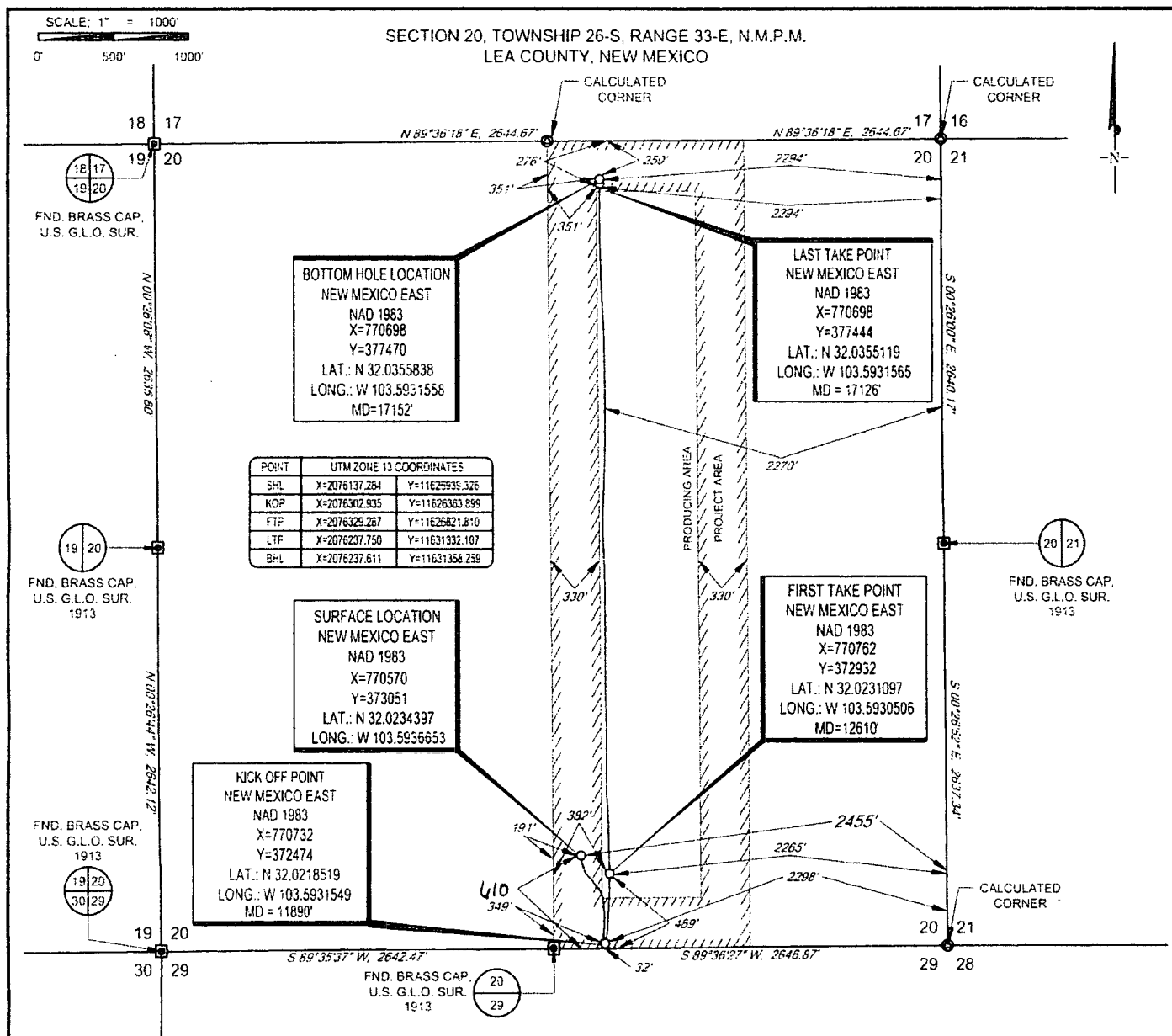
UL or lot no.	Section	Township	Range	Lot Idn	Feet from the	North/South line	Feet from the	East/West line	County
<b>0</b>	<b>20</b>	<b>26-S</b>	<b>33-E</b>	<b>-</b>	<b>610'</b>	<b>SOUTH</b>	<b>2455'</b>	<b>EAST</b>	<b>LEA</b>

UL or lot no.	Section	Township	Range	Lot Idn	Feet from the	North/South line	Feet from the	East/West line	County
<b>B</b>	<b>20</b>	<b>26-S</b>	<b>33-E</b>	<b>-</b>	<b>250'</b>	<b>NORTH</b>	<b>2294'</b>	<b>EAST</b>	<b>LEA</b>

<sup>11</sup> Dedicated Acres <b>160.00</b>	<sup>12</sup> Joint or Infill	<sup>13</sup> Consolidation Code	<sup>14</sup> Order No.
--	-------------------------------	----------------------------------	-------------------------

No allowable will be assigned to this completion until all interests have been consolidated or a non-standard unit has been approved by the division.



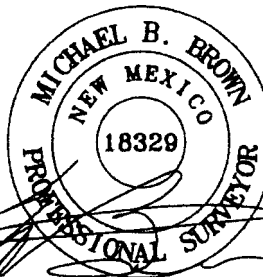


LEASE NAME & WELL NO.: ORRTANNA 20 FED #705H  
SECTION 20 TWP 26-S RGE 33-E SURVEY N.M.P.M.  
COUNTY LEA STATE NM ELEVATION 3252'  
DESCRIPTION 2455' FEL & 609' FSL



**TOPOGRAPHIC**  
LOYALTY INNOVATION LEGACY

1400 EVERMAN PARKWAY, Ste. 146 • FT. WORTH, TEXAS 76140  
TELEPHONE (817) 744-7512 • FAX (817) 744-7554  
2903 NORTH BIG SPRING • MIDLAND, TEXAS 79705  
TELEPHONE (432) 682-1653 OR (800) 767-1653 • FAX (432) 682-1723  
WWW.TOPOGRAPHIC.COM



Michael Blake Brown, P.S. No. 18329  
SEPTEMBER 04, 2018

**EOG resources, Inc.**

ORRTANNA 20 FED #705H  
AS-DRILLED

DATE: 09/04/18

FILE: AD\_ORRTANNA20FED\_705H

DRAWN BY: JLS

SHEET: 1 OF 1

REVISION:

NOTES:

1. ORIGINAL DOCUMENT SIZE 8.5" X 11"
2. ALL BEARINGS, DISTANCES AND COORDINATE VALUES CONTAINED HEREIN ARE GRID BASED UPON THE NEW MEXICO COORDINATE SYSTEM, EAST ZONE, U.S. SURVEY FEET NORTH AMERICAN DATUM 1983.
3. THIS WELL LOCATION SHOWN HEREON HAS BEEN SURVEYED ON THE GROUND UNDER MY SUPERVISION AND PREPARED ACCORDING TO THE EVIDENCE FOUND AT THE TIME OF SURVEY, AND DATA PROVIDED BY EOG RESOURCES, INC. THIS CERTIFICATION IS MADE AND LIMITED TO THOSE PERSONS OR ENTITIES SHOWN ON THE FACE OF THIS PLAT AND IS NON-TRANSFERABLE. THIS SURVEY IS CERTIFIED FOR THIS TRANSACTION ONLY.