

UNITED STATES
DEPARTMENT OF THE INTERIOR
BUREAU OF LAND MANAGEMENT

OCD Hobbs

FORM APPROVED
OMB No. 1004-0137
Expires: July 31, 2010

WELL COMPLETION OR RECOMPLETION REPORT AND LOG

5. Lease Serial No.
NMNM118727

- 1a. Type of Well ☒ Oil Well ☐ Gas Well ☐ Dry ☐ Other
b. Type of Completion ☒ New Well ☐ Work Over ☐ Deepen ☐ Plug Back ☐ Diff. Resvr.
Other _____

6. If Indian, Allottee or Tribe Name

7. Unit or CA Agreement Name and No.

2. Name of Operator
EOG RESOURCES INCContact: KAY MADDOX
E-Mail: KAY_MADDOX@EOGRESOURCES.COM8. Lease Name and Well No.
ORRTANNA 20 FED 607H3. Address 1111 BAGBY SKY LOBBY2
HOUSTON, TX 770023a. Phone (include area code)
Ph: 432-686-36589. API Well No.
30-025-43747-00-S1

4. Location of Well (Report location clearly and in accordance with Federal requirements)*

At surface SESE 768FSL 468FEL 32.023877 N Lat, 103.587254 W Lon

At top prod interval reported below SESE 394FSL 809FEL 32.022849 N Lat, 103.588425 W Lon

At total depth NENE 109FNL 828FEL 32.035971 N Lat, 103.588425 W Lon

10. Field and Pool, or Exploratory
SANDERS TANK-UPR WOLFCAMP11. Sec., T., R., M., or Block and Survey
or Area Sec 20 T26S R33E Mer NMP12. County or Parish
LEA13. State
NM14. Date Spudded
05/23/201815. Date T.D. Reached
07/17/201816. Date Completed
☐ D & A ☒ Ready to Prod.
08/28/201817. Elevations (DF, KB, RT, GL)*
3240 GL18. Total Depth: MD 17282
TVD 1226119. Plug Back T.D.: MD 17250
TVD 1226120. Depth Bridge Plug Set: MD
TVD21. Type Electric & Other Mechanical Logs Run (Submit copy of each)
3240 GL22. Was well cored? ☒ No ☐ Yes (Submit analysis)
Was DST run? ☒ No ☐ Yes (Submit analysis)
Directional Survey? ☐ No ☒ Yes (Submit analysis)

23. Casing and Liner Record (Report all strings set in well)

Hole Size	Size/Grade	Wt. (#/ft.)	Top (MD)	Bottom (MD)	Stage Cementer Depth	No. of Sk. & Type of Cement	Slurry Vol. (BBL)	Cement Top*	Amount Pulled
17.500	13.375 J55	54.5		909		840		0	
12.250	9.625 J55	40.0		4810		1635		0	
8.750	7.625 HCP110	29.7		11670		945		1036	
6.750	5.500 HCP110	20.0		17261		554		11309	

24. Tubing Record

Size	Depth Set (MD)	Packer Depth (MD)	Size	Depth Set (MD)	Packer Depth (MD)	Size	Depth Set (MD)	Packer Depth (MD)

25. Producing Intervals

26. Perforation Record

Formation	Top	Bottom	Perforated Interval	Size	No. Holes	Perf. Status
A) WOLFCAMP	12500	17250	12500 TO 17250	3.000	967	OPEN
B)						
C)						
D)						

27. Acid, Fracture, Treatment, Cement Squeeze, Etc.

Depth Interval	Amount and Type of Material
12500 TO 17250	11,419,100 LBS PROPPANT, 184,191 BBLs LOAD FLUID

28. Production - Interval A

Date First Produced	Test Date	Hours Tested	Test Production	Oil BBL	Gas MCF	Water BBL	Oil Gravity Corr. API	Gas Gravity	Production Method
08/28/2018	09/12/2018	24	→	2906.0	6001.0	2350.0	44.0		FLOWS FROM WELL
Choke Size	Tbg. Press. Flwg.	Csg. Press.	24 Hr. Rate	Oil BBL	Gas MCF	Water BBL	Gas:Oil Ratio	Well Status	
68	SI	727.0	→	2906	6001	2350	2065	POV	

28a. Production - Interval B

Date First Produced	Test Date	Hours Tested	Test Production	Oil BBL	Gas MCF	Water BBL	Oil Gravity Corr. API	Gas Gravity	Production Method
			→						
Choke Size	Tbg. Press. Flwg.	Csg. Press.	24 Hr. Rate	Oil BBL	Gas MCF	Water BBL	Gas:Oil Ratio	Well Status	
	SI		→						

ACCEPTED FOR RECORD

NOV 11 2018

BUREAU OF LAND MANAGEMENT
CARLSBAD FIELD OFFICE

(See Instructions and spaces for additional data on reverse side)

ELECTRONIC SUBMISSION #437362 VERIFIED BY THE BLM WELL INFORMATION SYSTEM

** BLM REVISED ** BLM REVISED ** BLM REVISED ** BLM REVISED ** BLM REVISED **

Reclamation Date: 2/28/2019

Kz

28b. Production - Interval C

Date First Produced	Test Date	Hours Tested	Test Production →	Oil BBL	Gas MCF	Water BBL	Oil Gravity Corr. API	Gas Gravity	Production Method
Choke Size	Tbg. Press. Flwg. SI	Csg. Press.	24 Hr. Rate →	Oil BBL	Gas MCF	Water BBL	Gas:Oil Ratio	Well Status	

28c. Production - Interval D

Date First Produced	Test Date	Hours Tested	Test Production →	Oil BBL	Gas MCF	Water BBL	Oil Gravity Corr. API	Gas Gravity	Production Method
Choke Size	Tbg. Press. Flwg. SI	Csg. Press.	24 Hr. Rate →	Oil BBL	Gas MCF	Water BBL	Gas:Oil Ratio	Well Status	

29. Disposition of Gas(Sold, used for fuel, vented, etc.)
SOLD

30. Summary of Porous Zones (Include Aquifers):

Show all important zones of porosity and contents thereof: Cored intervals and all drill-stem tests, including depth interval tested, cushion used, time tool open, flowing and shut-in pressures and recoveries.

31. Formation (Log) Markers

Formation	Top	Bottom	Descriptions, Contents, etc.	Name	Top
					Meas. Depth
RUSTLER	818		BARREN	RUSTLER	818
TOP OF SALT	1169		BARREN	TOP OF SALT	1169
BASE OF SALT	4630		BARREN	BASE OF SALT	4630
BRUSHY CANYON	7471		OIL & GAS	BRUSHY CANYON	7471
BONE SPRING 1ST	9964		OIL & GAS	BONE SPRING 1ST	9964
BONE SPRING 2ND	10543		OIL & GAS	BONE SPRING 2ND	10543
BONE SPRING 3RD	11695		OIL & GAS	BONE SPRING 3RD	11695
WOLFCAMP	12160		OIL & GAS	WOLFCAMP	12160

32. Additional remarks (include plugging procedure):
PLEASE REFERENCE ATTACHMENTS

33. Circle enclosed attachments:

- | | | | |
|---|--------------------|---------------|-----------------------|
| 1. Electrical/Mechanical Logs (1 full set req'd.) | 2. Geologic Report | 3. DST Report | 4. Directional Survey |
| 5. Sundry Notice for plugging and cement verification | 6. Core Analysis | 7. Other: | |

34. I hereby certify that the foregoing and attached information is complete and correct as determined from all available records (see attached instructions):

Electronic Submission #437362 Verified by the BLM Well Information System.

For EOG RESOURCES INC, sent to the Hobbs

Committed to AFMSS for processing by DUNCAN WHITLOCK on 10/10/2018 (19DW0015SE)

Name (please print) KAY MADDOX

Title REGULATORY SPECIALIST

Signature (Electronic Submission)

Date 09/27/2018

Title 18 U.S.C. Section 1001 and Title 43 U.S.C. Section 1212, make it a crime for any person knowingly and willfully to make to any department or agency of the United States any false, fictitious or fraudulent statements or representations as to any matter within its jurisdiction.

** REVISED ** REVISED ** REVISED ** REVISED ** REVISED ** REVISED ** REVISED **

District I
1625 N. French Dr., Hobbs, NM 88240
Phone: (575) 393-6161 Fax: (575) 393-0120
District II
811 S. First St., Artesia, NM 88210
Phone: (575) 745-1283 Fax: (575) 748-9720
District III
1000 Rio Brazos Road, Aztec, NM 87410
Phone: (505) 334-6178 Fax: (505) 334-6170
District IV
1220 S. St. Francis Dr., Santa Fe, NM 87505
Phone: (505) 476-3460 Fax: (505) 476-3462

State of New Mexico
Energy, Minerals & Natural Resources
Department
OIL CONSERVATION DIVISION
1220 South St. Francis Dr.
Santa Fe, NM 87505

FORM C-102
Revised August 1, 2011
Submit one copy to appropriate
District Office

☒ AMENDED REPORT

WELL LOCATION AND ACREAGE DEDICATION PLAT

¹ API Number 30-025-43747	² Pool Code 98097	³ Pool Name Sanders Tank; Upper Wolfcamp
⁴ Property Code 316102	⁵ Property Name ORRTANNA 20 FED	⁶ Well Number #707H
⁷ OGRID No. 7377	⁸ Operator Name EOG RESOURCES, INC.	⁹ Elevation 3240'

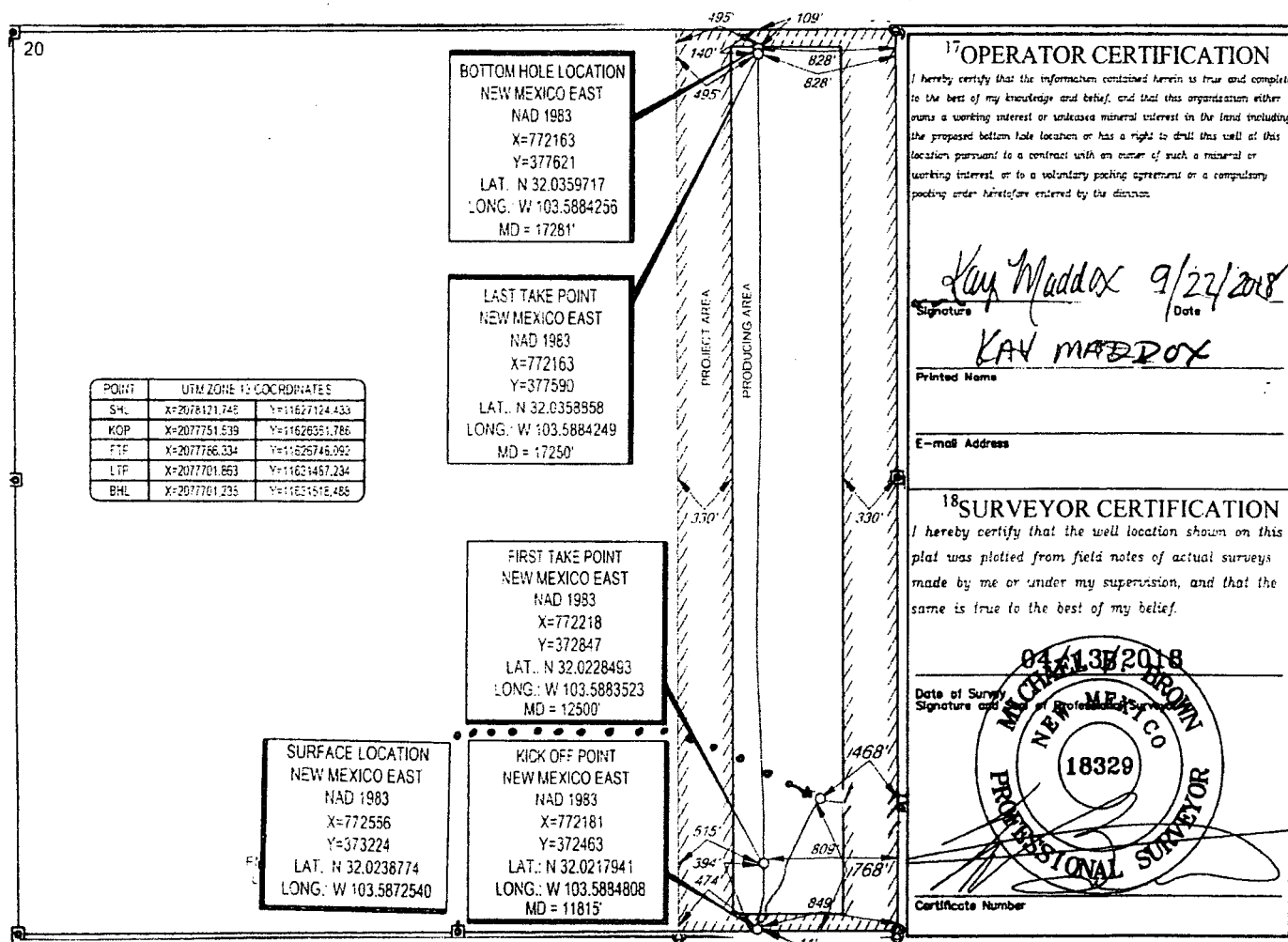
¹⁰Surface Location

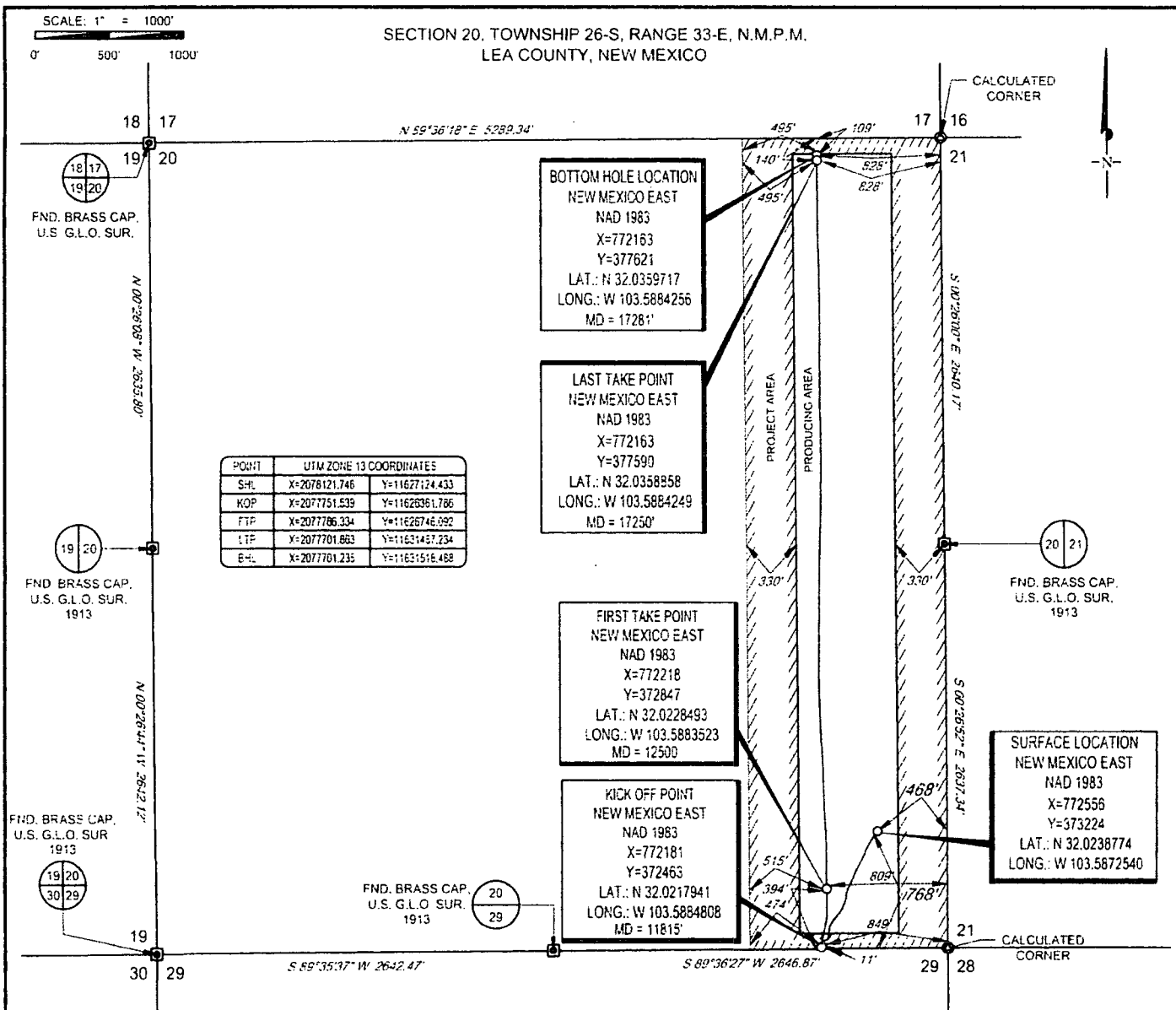
UL or lot no.	Section	Township	Range	Lot Idn	Feet from the	North/South line	Feet from the	East/West line	County
P	20	26-S	33-E	-	768'	SOUTH	468'	EAST	LEA

UL or lot no.	Section	Township	Range	Lot Idn	Feet from the	North/South line	Feet from the	East/West line	County
A	20	26-S	33-E	-	109'	NORTH	828'	EAST	LEA

¹¹ Dedicated Acres 160.00	¹² Joint or Infill	¹³ Consolidation Code	¹⁴ Order No.
---	-------------------------------	----------------------------------	-------------------------

No allowable will be assigned to this completion until all interests have been consolidated or a non-standard unit has been approved by the division.



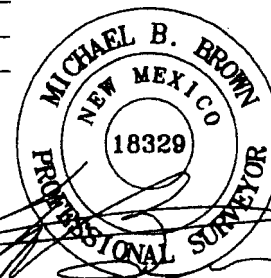


LEASE NAME & WELL NO.: ORRTANNA 20 FED #707H

SECTION 20 TWP 26-S RGE 33-E SURVEY N.M.P.M.

COUNTY LEA STATE NM ELEVATION 3240'

DESCRIPTION 468' FEL & 768' FSL



Michael Blake Brown, P.S. No. 18329
SEPTEMBER 04, 2018



TOPOGRAPHIC
LOYALTY INNOVATION LEGACY

1400 EVERMAN PARKWAY, Ste. 146 • FT. WORTH, TEXAS 76140
TELEPHONE: (817) 744-7512 • FAX (817) 744-7554
2903 NORTH BIG SPRING • MIDLAND, TEXAS 79705
TELEPHONE: (432) 682-1653 OR (800) 767-1653 • FAX (432) 682-1743
WWW.TOPOGRAPHIC.COM

Geog resources, Inc.

ORRTANNA 20 FED #707H
AS-DRILLED

DATE: 09/04/18

FILE: AD_ORRTANNA20FED_707H

DRAWN BY: JDR

SHEET: 1 OF 1

REVISION:

NOTES:

1. ORIGINAL DOCUMENT SIZE: 8.5" x 11"
2. ALL BEARINGS, DISTANCES, AND COORDINATE VALUES CONTAINED HEREIN ARE GRID BASED UPON THE NEW MEXICO COORDINATE SYSTEM OF 1983, EAST ZONE, U.S. SURVEY FEET.
3. THIS WELL LOCATION SHOWN HEREON HAS BEEN SURVEYED ON THE GROUND UNDER MY SUPERVISION AND PREPARED ACCORDING TO THE EVIDENCE FOUND AT THE TIME OF SURVEY, AND DATA PROVIDED BY EOG RESOURCES, INC. THIS CERTIFICATION IS MADE AND LIMITED TO THOSE PERSONS OR ENTITIES SHOWN ON THE FACE OF THIS PLAT AND IS NON-TRANSFERABLE. THIS SURVEY IS CERTIFIED FOR THIS TRANSACTION ONLY.