

HOBBS OCD

Form 3160-4
(August 2007)

UNITED STATES
DEPARTMENT OF THE INTERIOR
BUREAU OF LAND MANAGEMENT

FORM APPROVED
OMB No. 1004-0137
Expires: July 31, 2010

WELL COMPLETION OR RECOMPLETION REPORT AND LOG

5. Lease Serial No.
NMNM26079

6. If Indian, Allottee or Tribe Name

7. Unit or CA Agreement Name and No.

8. Lease Name and Well No.
STREETCAR 15 FED 701H

9. API Well No.
30-025-44537-00-S1

10. Field and Pool, or Exploratory
WC025G09S253309A-UPR WOLFCAMP

11. Sec., T., R., M., or Block and Survey
or Area Sec 15 T25S R33E Mer NMP

12. County or Parish
LEA

13. State
NM

17. Elevations (DF, KB, RT, GL)*
3349 GL

22. Was well cored? ☒ No ☐ Yes (Submit analysis)
Was DST run? ☒ No ☐ Yes (Submit analysis)
Directional Survey? ☐ No ☒ Yes (Submit analysis)

1a. Type of Well ☒ Oil Well ☐ Gas Well ☐ Dry ☐ Other

b. Type of Completion ☒ New Well ☐ Work Over ☐ Deepen ☐ Plug Back ☐ Diff. Resvr.
Other

2. Name of Operator
EOG RESOURCES INCORPORATED

Contact: KAY MADDOX
E-Mail: KAY_MADDOX@EOGRESOURCES.COM

3. Address
MIDLAND, TX 79702

3a. Phone No. (include area code)
Ph: 432-686-3658

4. Location of Well (Report location clearly and in accordance with Federal requirements)*

At surface SESE 249FSL 323FEL 32.123979 N Lat, 103.552704 W Lon

At top prod interval reported below SESE 344FSL 363FEL 32.124238 N Lat, 103.552836 W Lon

At total depth NENE 229FNL 367FEL 32.137178 N Lat, 103.552840 W Lon

14. Date Spudded
05/20/2018

15. Date T.D. Reached
06/09/2018

16. Date Completed
☐ D & A ☒ Ready to Prod.
08/14/2018

18. Total Depth: MD 17242 TVD 12404

19. Plug Back T.D.: MD 17200 TVD 12404

20. Depth Bridge Plug Set: MD TVD

21. Type Electric & Other Mechanical Logs Run (Submit copy of each)
3349 GL

23. Casing and Liner Record (Report all strings set in well)

Hole Size	Size/Grade	Wt. (#/ft.)	Top (MD)	Bottom (MD)	Stage Cementer Depth	No. of Sk. & Type of Cement	Slurry Vol. (BBL)	Cement Top*	Amount Pulled
17.500	13.375 J55	54.5		1215		1260		0	
12.250	9.625 J55	40.0		4943		1620		0	
8.750	7.625 HCP110	29.7		11668		515		2950	
6.750	5.500 HCP110	20.0		17223		540		10824	

24. Tubing Record

Size	Depth Set (MD)	Packer Depth (MD)	Size	Depth Set (MD)	Packer Depth (MD)	Size	Depth Set (MD)	Packer Depth (MD)

25. Producing Intervals

Formation	Top	Bottom	Perforated Interval	Size	No. Holes	Perf. Status
A) WOLFCAMP	12521	17200	12521 TO 17200	3.000	1020	OPEN
B)						
C)						
D)						

26. Perforation Record

27. Acid, Fracture, Treatment, Cement Squeeze, Etc.

Depth Interval	Amount and Type of Material
12521 TO 17200	12,805,440 LBS PROPPANT, 180,462 BBLS LOAD FLUID

28. Production - Interval A

Date First Produced	Test Date	Hours Tested	Test Production	Oil BBL	Gas MCF	Water BBL	Oil Gravity Corr. API	Gas Gravity	Production Method
08/14/2018	08/17/2018	24	→	2337.0	3926.0	8382.0	41.0		FLOWS FROM WELL
Choke Size	Tbg. Press. Flwg. SI	Csg. Press.	24 Hr. Rate	Oil BBL	Gas MCF	Water BBL	Gas:Oil Ratio	Well Status	
64	SI	1496.0	→	2337	3926	8382	1680	POW	

28a. Production - Interval B

Date First Produced	Test Date	Hours Tested	Test Production	Oil BBL	Gas MCF	Water BBL	Oil Gravity Corr. API	Gas Gravity	Production Method
			→						
Choke Size	Tbg. Press. Flwg. SI	Csg. Press.	24 Hr. Rate	Oil BBL	Gas MCF	Water BBL	Gas:Oil Ratio	Well Status	
	SI		→						

ACCEPTED FOR RECORD

NOV 14 2018

BUREAU OF LAND MANAGEMENT
CARLSBAD FIELD OFFICE

(See Instructions and spaces for additional data on reverse side)

ELECTRONIC SUBMISSION #436061 VERIFIED BY THE BLM WELL INFORMATION SYSTEM

** BLM REVISED ** BLM REVISED ** BLM REVISED ** BLM REVISED ** BLM REVISED **

Reclamation Due: 2/14/2019

28b. Production - Interval C

Date First Produced	Test Date	Hours Tested	Test Production →	Oil BBL	Gas MCF	Water BBL	Oil Gravity Corr. API	Gas Gravity	Production Method
Choke Size	Tbg. Press. Flwg. SI	Csg. Press.	24 Hr. Rate →	Oil BBL	Gas MCF	Water BBL	Gas:Oil Ratio	Well Status	

28c. Production - Interval D

Date First Produced	Test Date	Hours Tested	Test Production →	Oil BBL	Gas MCF	Water BBL	Oil Gravity Corr. API	Gas Gravity	Production Method
Choke Size	Tbg. Press. Flwg. SI	Csg. Press.	24 Hr. Rate →	Oil BBL	Gas MCF	Water BBL	Gas:Oil Ratio	Well Status	

29. Disposition of Gas(Sold, used for fuel, vented, etc.)
SOLD

30. Summary of Porous Zones (Include Aquifers):

Show all important zones of porosity and contents thereof: Cored intervals and all drill-stem tests, including depth interval tested, cushion used, time tool open, flowing and shut-in pressures and recoveries.

31. Formation (Log) Markers

Formation	Top	Bottom	Descriptions, Contents, etc.	Name	Top
					Meas. Depth
BONE SPRING 3RD	0		OIL & GAS	BONE SPRING 2ND	0
WOLFCAMP	0		OIL & GAS	BONE SPRING 3RD	0
BONE SPRING 2ND	0		OIL & GAS	WOLFCAMP	0
RUSTLER	1090		BARREN	RUSTLER	1090
TOP OF SALT	1364		BARREN	TOP OF SALT	1364
BASE OF SALT	4774		BARREN	BASE OF SALT	4774
BRUSHY CANYON	7662		OIL & GAS	BRUSHY CANYON	7662
BONE SPRING 1ST	10211		OIL & GAS	BONE SPRING 1ST	10211

32. Additional remarks (include plugging procedure):
PLEASE REFERENCE ATTACHMENTS

33. Circle enclosed attachments:

- | | | | |
|---|--------------------|---------------|-----------------------|
| 1. Electrical/Mechanical Logs (1 full set req'd.) | 2. Geologic Report | 3. DST Report | 4. Directional Survey |
| 5. Sundry Notice for plugging and cement verification | 6. Core Analysis | 7 Other: | |

34. I hereby certify that the foregoing and attached information is complete and correct as determined from all available records (see attached instructions):

**Electronic Submission #436061 Verified by the BLM Well Information System.
For EOG RESOURCES INCORPORATED, sent to the Hobbs
Committed to AFMSS for processing by DUNCAN WHITLOCK on 10/10/2018 (19DW0004SE)**

Name (please print) KAY MADDOXTitle REGULATORY SPECIALIST

Signature _____ (Electronic Submission)

Date 09/19/2018

Title 18 U.S.C. Section 1001 and Title 43 U.S.C. Section 1212, make it a crime for any person knowingly and willfully to make to any department or agency of the United States any false, fictitious or fraudulent statements or representations as to any matter within its jurisdiction.

**** REVISED ** REVISED ** REVISED ** REVISED ** REVISED ** REVISED ** REVISED ****

District I
1625 N. French Dr., Hobbs, NM 88240
Phone: (575) 393-6161 Fax: (575) 393-0720
District II
811 S. First St., Artesia, NM 88210
Phone: (575) 748-1283 Fax: (575) 748-9720
District III
1000 Rio Brazos Road, Aztec, NM 87410
Phone: (505) 334-6178 Fax: (505) 334-6170
District IV
1220 S. St. Francis Dr., Santa Fe, NM 87505
Phone: (505) 476-3460 Fax: (505) 476-3462

State of New Mexico
Energy, Minerals & Natural Resources
Department
OIL CONSERVATION DIVISION
1220 South St. Francis Dr.
Santa Fe, NM 87505

FORM C-102
Revised August 1, 2011
Submit one copy to appropriate
District Office

☐ AMENDED REPORT

WELL LOCATION AND ACREAGE DEDICATION PLAT

¹ API Number 30-025-44537	² Pool Code 98180	³ Pool Name WC025 G09 S253309A; Upper Wolfcamp
⁴ Property Code 315310	⁵ Property Name STREETCAR 15 FED	
⁶ Well Number #701H	⁷ Operator Name EOG RESOURCES, INC.	⁸ Elevation 3349'
⁹ GRID No. 7377		

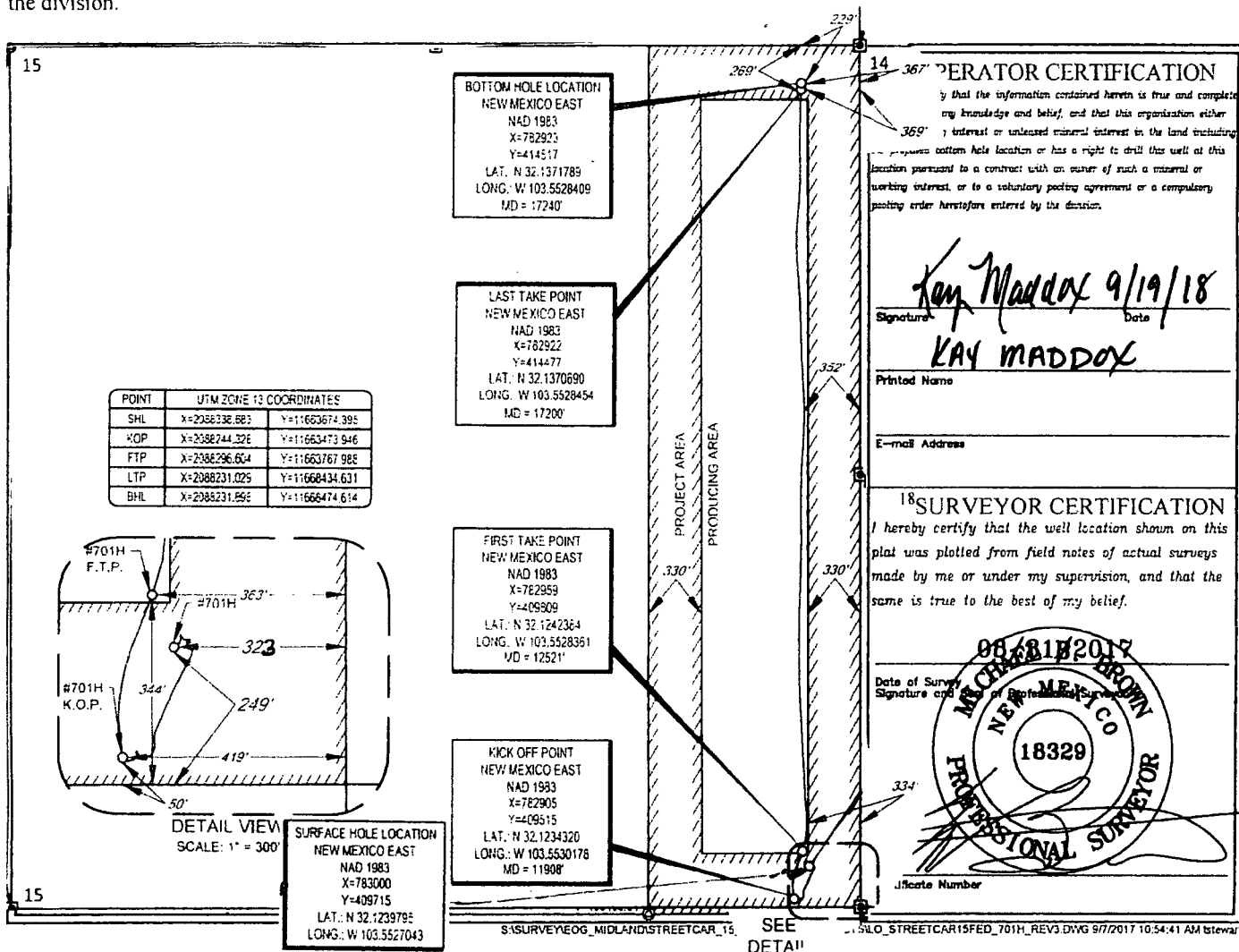
¹⁰Surface Location

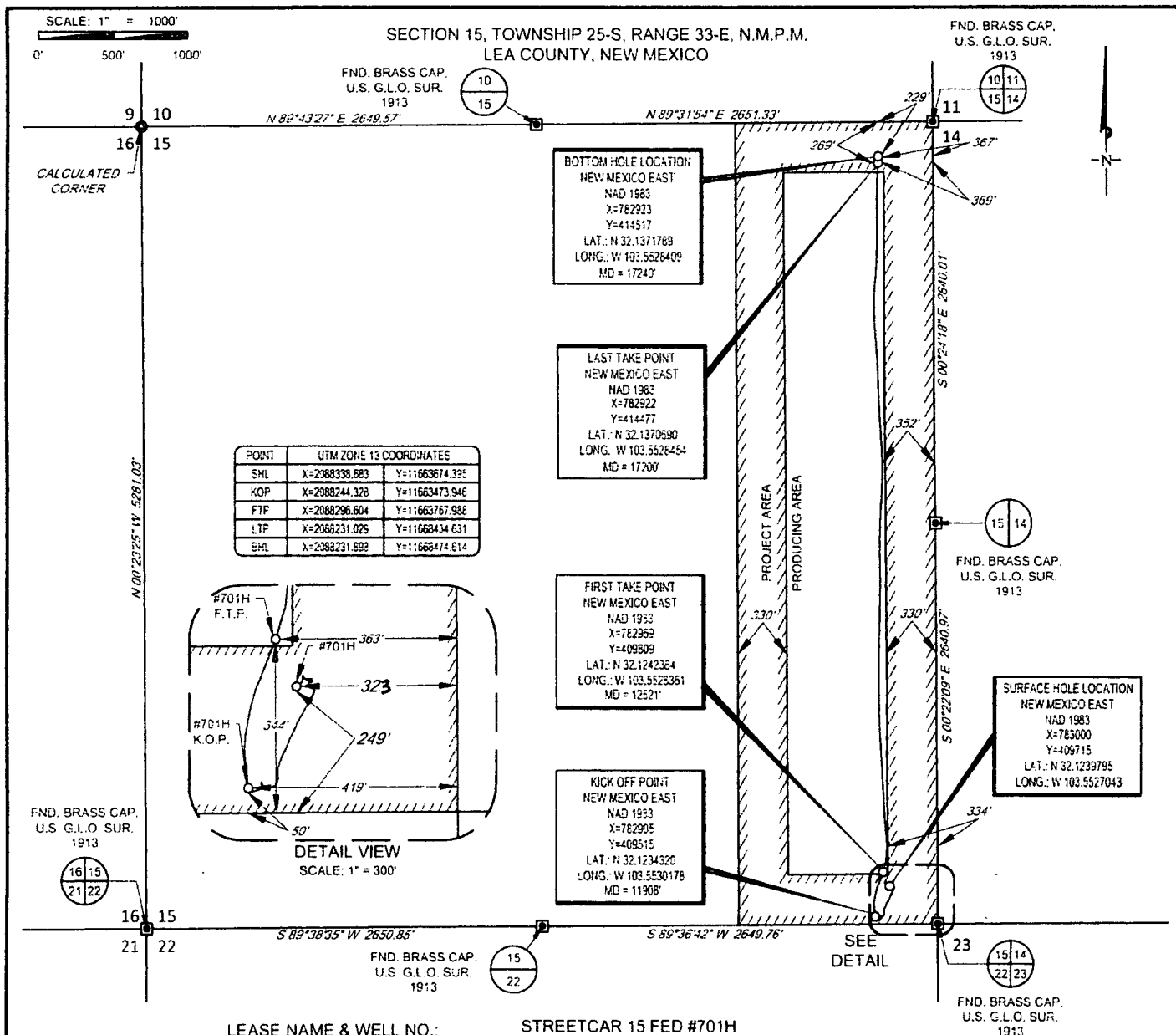
UL or lot no.	Section	Township	Range	Lot Idn	Feet from the	North/South line	Feet from the	East/West line	County
P	15	25-S	33-E	-	249'	SOUTH	323'	EAST	LEA

UL or lot no.	Section	Township	Range	Lot Idn	Feet from the	North/South line	Feet from the	East/West line	County
A	15	25-S	33-E	-	229	NORTH	367'	EAST	LEA

¹¹ Dedicated Acres 160.00	¹² Joint or Infill	¹³ Consolidation Code	¹⁴ Order No.
--	-------------------------------	----------------------------------	-------------------------

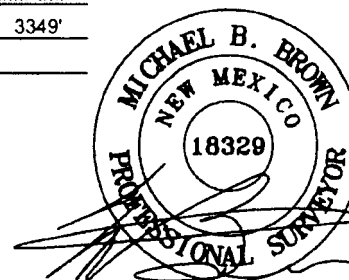
No allowable will be assigned to this completion until all interests have been consolidated or a non-standard unit has been approved by the division.





eoog resources, inc.

TOPOGRAPHIC
LOYALTY INNOVATION LEGACY
1406 EVERMAN PARKWAY, Ste. 146 • FT. WORTH, TEXAS 76140
TELEPHONE (817) 744-7512 • FAX (817) 744-7554
TEXAS FIRM REGISTRATION NO. 10042504
WWW.TOPOGRAPHIC.COM



Michael Blake Brown, P.S. No. 18329
AUGUST 14, 2018

STREETCAR 15 FED #701H PRE-COMPLETION	REVISION:	NOTES:
		1. ORIGINAL DOCUMENT SIZE: 8.5" X 11"
		2. ALL BEARINGS, DISTANCES, AND COORDINATE VALUES CONTAINED HEREIN ARE GRID BASED UPON THE NEW MEXICO STATE PLANE COORDINATE SYSTEM, EAST ZONE, U.S. SURVEY FEET, NORTH AMERICAN DATUM 1983.
		3. THIS WELL LOCATION SHOWN HEREON HAS BEEN SURVEYED ON THE GROUND UNDER MY SUPERVISION AND PREPARED ACCORDING TO THE EVIDENCE FOUND AT THE TIME OF SURVEY, AND DATA PROVIDED BY EOG RESOURCES, INC. THIS CERTIFICATION IS MADE AND LIMITED TO THOSE PERSONS OR ENTITIES SHOWN ON THE FACE OF THIS PLAN AND IS NON-TRANSFERABLE. THIS SURVEY IS CERTIFIED FOR THIS TRANSACTION ONLY.
DATE: 08/14/18		
FILE: AD_STREETCAR15FED_701H		
DRAWN BY: A.M.D.		
SHEET: 1 OF 1		