

DISTRICT I
1025 N. French Dr., Hobbs, NM 88240
Phone (575) 393-6101 Fax (575) 393-0720

DISTRICT II
311 S. First St., Artesia, NM 88211
Phone (505) 748-1625 Fax (505) 748-0720

DISTRICT III
1000 Rio Brazos Rd., Aztec, NM 87412
Phone (505) 834-6178 Fax (505) 834-6170

DISTRICT IV
1220 S. St. Francis Dr., Santa Fe, NM 87505
Phone (505) 476-3460 Fax (505) 476-3468

State of New Mexico
Energy, Minerals and Natural Resources Department

Form C-102
Revised August 4, 2011

Submit one copy to appropriate
District Office

CONSERVATION DIVISION
1220 South St. Francis Dr.
Santa Fe, New Mexico 87505

RECEIVED
DEC 13 2018

WELL LOCATION AND ACREAGE DEDICATION PLAT

AMENDED REPORT

API Number 30-025-45027	Pool Code 37870	Pool Name Legg; Bone Spring
Property Code 319603	Property Name MERCHANT STATE UNIT	Well Number 506Y
OGRID No. 372417	Operator Name ADVANCE ENERGY PARTNERS HAT MESA	Elevation 3656'

Surface Location

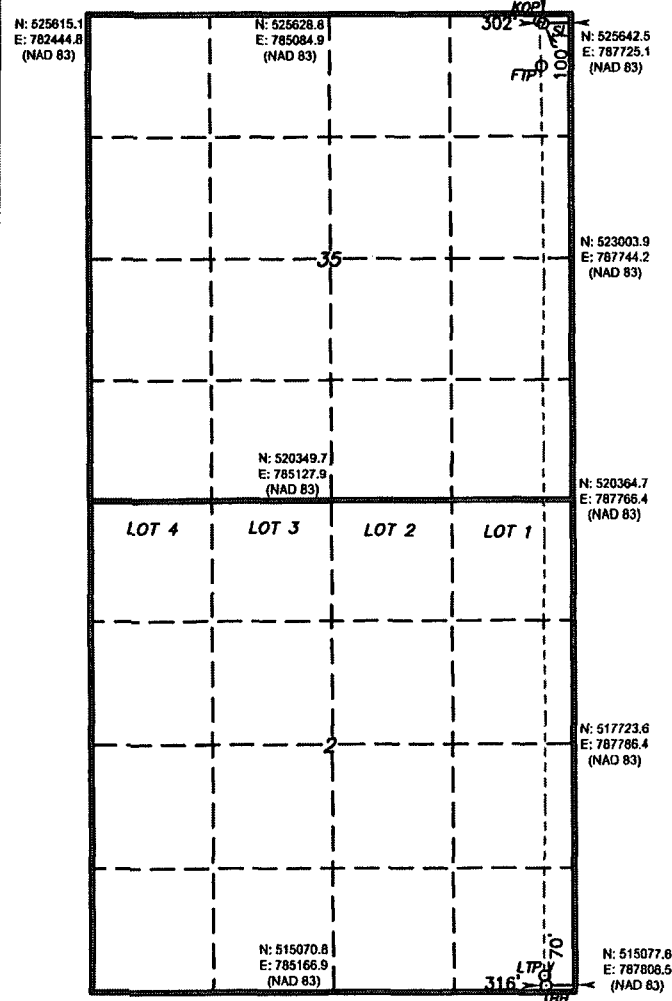
UL or lot No.	Section	Township	Range	Lot Idn	Feet from the	SOUTH/South line	Feet from the	East/West line	County
A	35	21 S	33 E		100	NORTH	302	EAST	LEA

Bottom Hole Location If Different From Surface

UL or lot No.	Section	Township	Range	Lot Idn	Feet from the	SOUTH/South line	Feet from the	East/West line	County
P	2	22 S	33 E		70	SOUTH	316	EAST	LEA

Dedicated Acres	Joint or Infill	Consolidation Code	Order No.
-----------------	-----------------	--------------------	-----------

NO ALLOWABLE WILL BE ASSIGNED TO THIS COMPLETION UNTIL ALL INTERESTS HAVE BEEN CONSOLIDATED
OR A NON-STANDARD UNIT HAS BEEN APPROVED BY THE DIVISION



SURFACE LOCATION

Lat - N 32.442250°
Long - W 103.535635°
NMSPC- N 525540.7
E 787423.6
(NAD-83)

KICK OFF POINT
79' FNL & 337' FEL

Lat - N 32.442316°
Long - W 103.535747°
NMSPC- N 525564.3
E 787388.9
(NAD-83)

FIRST TAKE POINT
562' FNL & 320' FEL

Lat - N 32.440980°
Long - W 103.535694°
NMSPC- N 525078.4
E 787408.9
(NAD-83)

LAST TAKE POINT
172' FSL & 328' FEL

Lat - N 32.413962°
Long - W 103.535710°
NMSPC- N 515248.9
E 787477.3
(NAD-83)

BOTTOM HOLE LOCATION

Lat - N 32.413681°
Long - W 103.535670°
NMSPC- N 515146.7
E 787490.4
(NAD-83)

OPERATOR CERTIFICATION

I hereby certify that the information contained herein is true and complete to the best of my knowledge and belief, and that this organization either owns a working interest or unleased mineral interest in the land including the proposed bottom hole location or has a right to drill this well at this location pursuant to a contract with an owner of such a mineral or working interest, or to a voluntary pooling agreement or a compulsory pooling order heretofore entered by the division.

Signature: Braden Harris
Date: 12-13-2018

Printed Name: bharris@advanceenergypartners.com
Email Address:

SURVEYOR CERTIFICATION

I hereby certify that the well location shown on this plat was plotted from field notes of actual surveys made by me or under my supervision, and that the same is true and correct to the best of my belief.

DECEMBER 12 2018

Date Surveyed: 12-13-2018
Signature & Seal of Professional Surveyor: 7977

Certificate of Accuracy: 7977

Scale: 1" = 4000'
WO Num.: 34247