

DISTRICT I
1625 N. French Dr., Hobbs, NM 88240

DISTRICT II
811 South First, Artesia, NM 88210

DISTRICT III
1000 Rio Brazos Rd., Artesia, NM 87410

DISTRICT IV
2040 South Pacheco, Santa Fe, NM 87505

State of New Mexico
Energy, Minerals and Natural Resources Department

OIL CONSERVATION DIVISION

1220 South St. Francis Dr.
Santa Fe, New Mexico 87505

Form C-102
Revised August 1, 2011

HOBBES OCD
FEB 28 2019
RECEIVED

Submit one copy to Appropriate
District Office

☐ AMENDED REPORT

WELL LOCATION AND ACREAGE DEDICATION PLAT

API Number 30-025-45566	Pool Code 17980	Pool Name NOGIE DRAW; WOLFCAMP
Property Code 324019	Property Name PITCHBLADE FED 24-25	Well Number 603H
OCRD No. 162928	Operator Name ENERGEN RESOURCES CORPORATION	Elevation 3354'

Surface Location

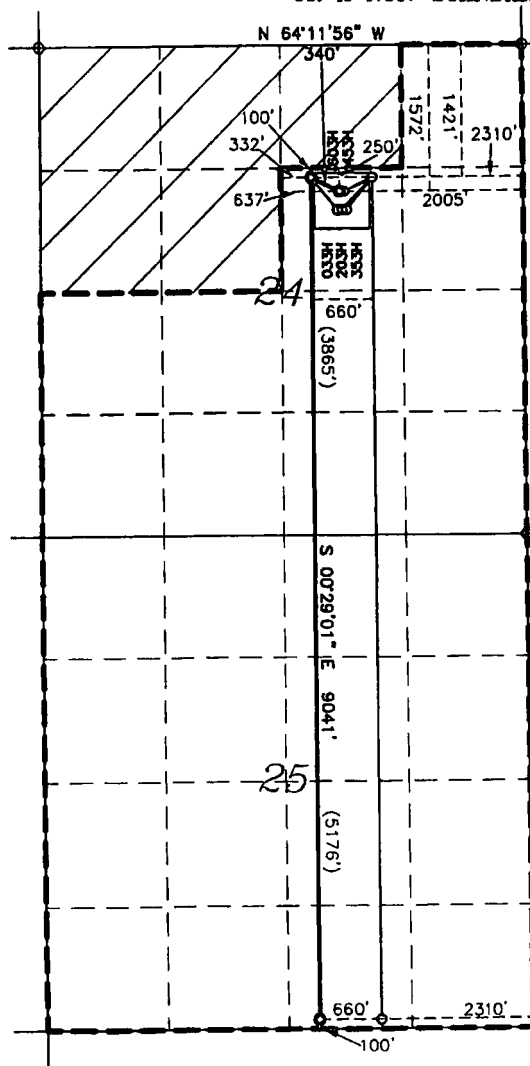
UL or lot No.	Section	Township	Range	Lot Idn	Feet from the	North/South line	Feet from the	East/West line	County
G	24	25-S	34-E	G	1572	NORTH	2005	EAST	LEA

Bottom Hole Location If Different From Surface

UL or lot No.	Section	Township	Range	Lot Idn	Feet from the	North/South line	Feet from the	East/West line	County
0	25	25-S	34-E	0	100	SOUTH	2310	EAST	LEA

Dedicated Acres	Joint or Infill	Consolidation Code	Order No.
280			

NO ALLOWABLE WILL BE ASSIGNED TO THIS COMPLETION UNTIL ALL INTERESTS HAVE BEEN CONSOLIDATED
OR A NON-STANDARD UNIT HAS BEEN APPROVED BY THE DIVISION



SHL: 1572' FNL & 2005' FEL
NAD 27
N: 408119.68
E: 782411.80
LAT: 32.1188770
LON: 103.4216176
NAD 83
N: 408177.67
E: 823598.46
LAT: 32.1188770
LON: 103.4216176

1ST T/P: 1421' FNL & 2310' FEL
NAD 27
N: 408267.78
E: 782105.47
LAT: 32.1192912
LON: 103.4226030
NAD 83
N: 408325.77
E: 823292.12
LAT: 32.1192912
LON: 103.4226030

NOTES:
1. COORDINATES AND BEARINGS ARE BASED ON
LAMBERT CONICAL PROJECTION OF THE STATE
PLANE COORDINATE SYSTEM NAD 83, CORRS 96,
NEW MEXICO EAST ZONE WITH A CONVERGENCE
ANGLE OF 0.53778259 AND DISTANCES ARE OF
GRID VALUE WITH A CENTRAL COMBINED SCALE
FACTOR OF 0.99985905. THE POSITIONAL
TOLERANCE OF THIS SURVEY EXCEEDS THE
REQUIREMENTS FOR A CONSTRUCTION SURVEY.
2. SCALE 1" = 2000'

LAST T/P & BHL: 100' FSL & 2310' FEL
NAD 27
N: 399227.44
E: 782181.35
LAT: 32.0944404
LON: 103.4226032
NAD 83
N: 399285.19
E: 823368.41
LAT: 32.0944404
LON: 103.4226032

OPERATOR CERTIFICATION

I hereby certify that the information contained
herein is true and complete to the best of my
knowledge and belief, and that this
organization either owns a working interest or
unleased mineral interest in the land including
the proposed bottom hole location or has a
right to drill this well at this location
pursuant to a contract with an owner of such
a mineral or working interest, or to a
voluntary pooling agreement or compulsory
pooling order heretofore entered by the division.

Brenda F. Rathjen 8/28/18

Signature Date

Brenda F. Rathjen

Printed Name

August 28, 2018

Date

SURVEYOR CERTIFICATION

I hereby certify that the well location shown
on this plat was plotted from field notes of
actual surveys made by me or under my
supervision, and that the same are true and
correct to the best of my knowledge.

REGISTERED PROFESSIONAL LAND SURVEYOR
STATE OF NEW MEXICO
DECEMBER 2017

Date Surveyed No. 3959

Signature & Seal of Professional Surveyor

Signature Date JULY 12, 2018

Certificate No. WILSON D. WATSON JR.
P.L.S. #3959
WATSON PROFESSIONAL GROUP INC