

Submit 1 Copy To Appropriate District
Office
District I - (575) 393-6161
1625 N. French Dr., Hobbs, NM 88240
District II - (575) 748-1283
811 S. First St., Artesia, NM 88210
District III - (505) 334-6178
1000 Rio Brazos Rd., Aztec, NM 87410
District IV - (505) 476-3460
1220 S. St. Francis Dr., Santa Fe, NM
87505

State of New Mexico
Energy, Minerals and Natural Resources

OIL CONSERVATION DIVISION
1220 South St. Francis Dr.
Santa Fe, NM 87505
HOBBS OGD
MAY 30 2019

Form C-103
Revised July 18, 2013

SUNDRY NOTICES AND REPORTS ON WELLS (DO NOT USE THIS FORM FOR PROPOSALS TO DRILL OR TO DEEPEN OR PLUG BACK TO A DIFFERENT RESERVOIR. USE "APPLICATION FOR PERMIT" (FORM C-101) FOR SUCH PROPOSALS.)		WELL API NO. 30-025-33398
1. Type of Well: Oil Well <input type="checkbox"/> Gas Well <input checked="" type="checkbox"/> Other SWD		5. Indicate Type of Lease STATE <input type="checkbox"/> FEE <input type="checkbox"/> FED
2. Name of Operator Foundation Energy Management, LLC		6. State Oil & Gas Lease No. NM-86923
3. Address of Operator 5057 Keller Springs Rd, Suite 650, Addison, Texas 75001		7. Lease Name or Unit Agreement Name Bitsy Federal SWD
4. Well Location Unit Letter H : 1980 feet from the North line and 660 feet from the East line Section 7 Township 23 South Range 32 East NMPM County Lea		8. Well Number 1
11. Elevation (Show whether DR, RKB, RT, GR, etc.) 3,550' GL		9. OGRID Number
		10. Pool name or Wildcat Delaware

12. Check Appropriate Box to Indicate Nature of Notice, Report or Other Data

NOTICE OF INTENTION TO:

PERFORM REMEDIAL WORK ☐ PLUG AND ABANDON ☐
TEMPORARILY ABANDON ☐ CHANGE PLANS ☐
PULL OR ALTER CASING ☐ MULTIPLE COMPL ☐
DOWNHOLE COMMINGLE ☐
CLOSED-LOOP SYSTEM ☐
OTHER: **Add Delaware Injection Perfs** ☒

SUBSEQUENT REPORT OF:

REMEDIAL WORK ☐ ALTERING CASING ☐
COMMENCE DRILLING OPNS. ☐ P AND A ☐
CASING/CEMENT JOB ☐
OTHER: ☐

13. Describe proposed or completed operations. (Clearly state all pertinent details, and give pertinent dates, including estimated date of starting any proposed work). SEE RULE 19.15.7.14 NMAC. For Multiple Completions: Attach wellbore diagram of proposed completion or recompletion.

NMOCD Order No. SWD-1156 dated 12/12/2008 authorized Enervest Operating, LLC (now Foundation Energy Management, LLC) to utilize the Bitsy Federal SWD No. 1 as a produced water disposal well. Injection can occur into the Delaware formation from 4660-6270 feet.

This well is currently completed as a produced water disposal well through perforations from 5301-5637, and 6166-6206 ft. In order to increase injectivity and reduce the injection pressure, Foundation Energy Management, LLC proposes to add injection perforations in the Delaware formation from 4990 to 5020, 5040 to 5070, and 5080 to 5110 feet. The exact location of the additional perforations, which is not known as this time will be determined by log analysis. However, all additional perforations will be in compliance with Order No. SWD-1156, and will be reported in a subsequent sundry notice.

Upon completion of perforating and acidizing, plastic-coated injection tubing will be set in a packer located within 100 ft of the uppermost injection perforations.

Attached is a specific procedure describing the proposed operations.

Proposed Work
Spud Date: **6/17/2019** Rig Release Date: **6/19/2019**

I hereby certify that the information above is true and complete to the best of my knowledge and belief.

SIGNATURE *[Signature]* TITLE HSE-Regulatory Supervisor DATE 5/29/19
Type or print name JAMES SMITH E-mail address: j.smith@foundationenergy.com PHONE: 910-526-5592
For State Use Only
APPROVED BY: *[Signature]* TITLE _____ DATE 06/04/19

Conditions of Approval (if any):

Bitsy Federal #1 SWD

Sand Dunes

Add Perfs to Increase Injection Capacity and Lower Pressure
Lea, County NM

Casing /Tubular Details and Capacities:

TUBULAR	SIZE	GRADE	DEPTH (ft)	WEIGHT (ppf)	CEMENT (sx)	TOC (ft)	
Surface Casing	13-3/8"	H-40	858	48	650	SFC	Circ
Intermediate Casing	8-5/8"	J-55	4338	32	1500	SFC	Circ
Production Casing	5-1/2"	K-55	9442	17	1330	SFC	Circ
Producing Tubing	2- 7/8"	IPC	4900	6.4	n/a	n/a	n/a

Procedure:

1. MIRU WO Rig
2. Kill well if necessary, using 2% KCL.
3. ND WH. NU BOP
4. Unseat Packer, PU joints and lower tubing to tag for fill.
5. TOO H with TBG. Tally as POOH and note tagged depth.
6. If fill is covering existing perfs, cleanout to TD before proceeding to next step.
7. MIRU wireline
8. RIH with 3 1/8" gun and perf new injection perfs from 4490-5020, 5040-5070, and 5080-5110.
9. POOH with WL guns
10. RD Wireline
11. PU and RIH with redressed packer and RIH with tubing.
12. Hydrotest as RIH to 6000 psi.
13. Set packer above new perfs at +/- 4910'
14. MIRU acid crew and test flowlines
15. Pump acid job according to pump schedule. 5,000-10,000 gals 7.5% NEFE HCl w/ scale inhibitor, clay stabilizer and ball sealers.
16. RDMO acid crew.
17. Pressure test packer is holding to 500 psi and 1000 psi for 10 min each.
18. Perform injection test to determine injection rate and pressure.
19. RDMO Wo Rig.
20. Reconnect equipment for disposal.

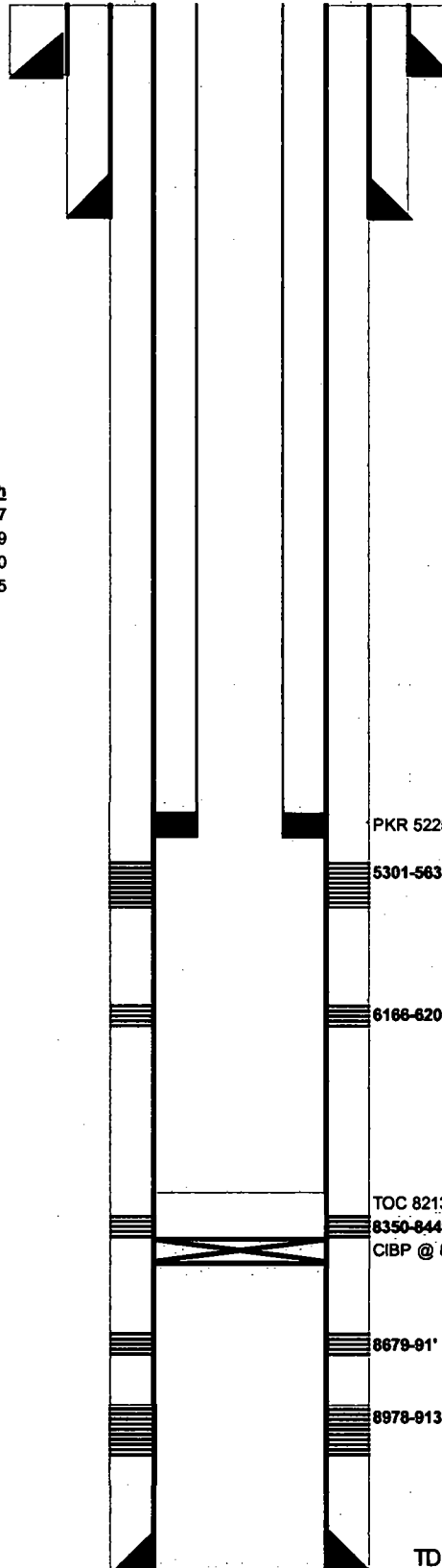
Bitsy Federal 1

Current WBD

Tubing Detail

2-7/8" inch(OD)
(weight)
IPC grade

Tubing Tally	Length	Depth
164JTS 2-7/8" IPC TBG	5217	5217
ON/OFF	2	5219
2.25 PROFILE NIPPLE	1	5220
2-7/8"X5-1/2 AEROSET PKR	5	5225



Surface Casing

15-3/8" inch (OD)
 48 # (weight)
 H-40 grade
 858' depth from KB
 surface cement top
 650 sacks of cement
 17-1/2" inch (OD) HOLE SIZE

Intermediate Casing

8-5/8" inch (OD)
 32 # (weight)
 J-55 grade
 4338' depth from KB
 surface cement top
 1500 sacks of cement
 12-1/2" inch (OD) HOLE SIZE

Production Casing

5-1/2" inch (OD)
 17 # (weight)
 J55/N80 grade
 9442' depth from KB
 SURFACE cement top
 1330 sacks of cement
 7-7/8" inch (OD) HOLE SIZE

PERMIT INJ ZONE
4,660-6,270'

Bitsy Federal 1

Proposed WBD

Tubing Detail

2-7/8	inch(OD)
	# (weight)
IPC	grade

Tubing Tally	Length	Depth
164JTS 2-7/8" IPC TBC	4900	4900
ON/OFF	2	4902
2.25 PROFILE NIPPLE	1	4903
2-7/8"X5-1/2 AEROSET PKR	5	4908

Surface Casing

13-3/8"	inch (OD)
48	# (weight)
H-40	grade
858	depth from KB
surface	cement top
650	sacks of cement
17-1/2"	inch (OD) HOLE SIZE

Intermediate Casing

8-5/8"	inch (OD)
32	# (weight)
J-55	grade
4338	depth from KB
surface	cement top
1500	sacks of cement
12-1/2"	inch (OD) HOLE SIZE

Production Casing

5-1/2"	inch (OD)
17	# (weight)
J55/N80	grade
9442	depth from KB
SURFACE	cement top
1330	sacks of cement
7-7/8"	inch (OD) HOLE SIZE

Proposed Perfs
4990-5020

5040-5070

5080-5110

5301-5637

6166-6206

TOC 8213'
8350-8449' 150 ex (2/16/2000)
CIBP @ 8629'

8679-91'

8978-9137

PERMIT INJ ZONE
4,660-6,270'

TD: 9442