

State of New Mexico
Energy, Minerals and Natural Resources Department
Oil Conservation Division Hobbs District Office

HOBBS OCD

OCT 18 2019

RECEIVED

BRADENHEAD TEST REPORT

Operator Name Ring Energy, Inc		API Number 30025-05204	
Property Name WT MANN A		Well No. 002	

Surface Location

UL - Lot B	Section 36	Township 14-S	Range 37-E	Feet from 660	N/S Line N	Feet From 2310	E/W Line E	County Lea
----------------------	----------------------	-------------------------	----------------------	-------------------------	----------------------	--------------------------	----------------------	----------------------

Well Status

TA'D WELL YES <input type="radio"/>	NO <input checked="" type="radio"/>	SHUT-IN YES <input type="radio"/>	NO <input checked="" type="radio"/>	INJECTOR INJ <input type="radio"/>	SWD	OIL	PRODUCER GAS	DATE 9-17-19
--	-------------------------------------	--------------------------------------	-------------------------------------	---------------------------------------	-----	-----	-----------------	------------------------

OBSERVED DATA

	(A)Surface	(B)Interm(1)	(C)Interm(2)	(D)Prod Csg	(E)Tubing
Pressure	0	0	NA	0	0
Flow Characteristics					NOT ENS
Puff	Y/N	Y/N	Y/N	Y/N	CO2
Steady Flow	Y/N	Y/N	Y/N	Y/N	WTR
Surges	Y/N	Y/N	Y/N	Y/N	GAS
Down to nothing	Y/N	Y/N	Y/N	Y/N	Type of Fluid
Gas or Oil	Y/N	Y/N	Y/N	Y/N	Injected for
Water	Y/N	Y/N	Y/N	Y/N	Waterflood if
					applies

Remarks - Please state for each string (A,B,C,D,E) pertinent information regarding bleed down or continuous build up if applies.

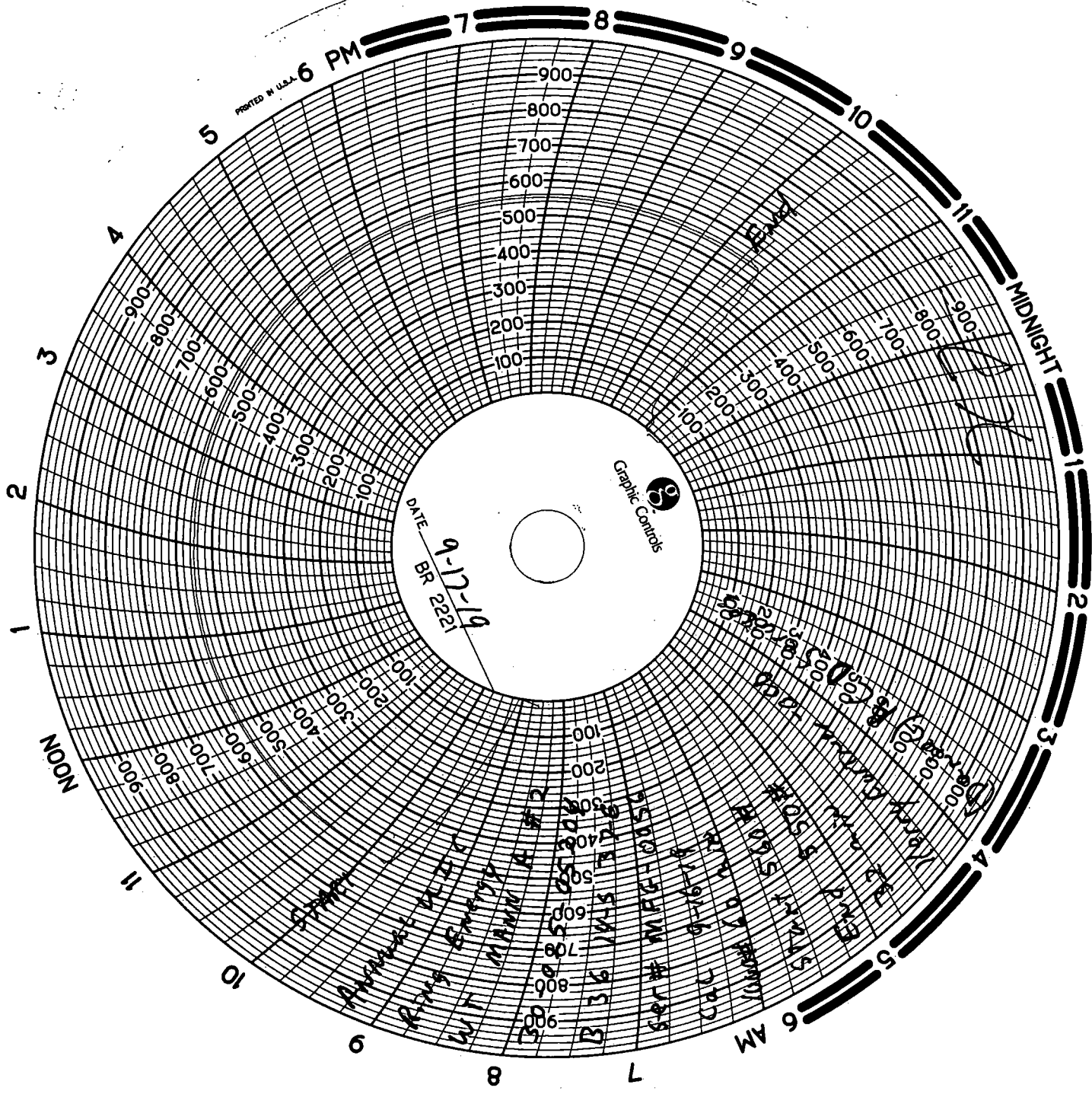
Annual MIT
ACD oilfield
Ser # MFG - 0056
Cal 9-16-19
PUTTING BACK TO INJECTING

Signature: Wayne Dixon	OIL CONSERVATION DIVISION
Printed name: WAYNE DIXON	Entered into RBDMS
Title: SUPERINTENDENT	Re-test
E-mail Address: WDIXON@RVLENERGY.COM	
Date: 9-17-19	
Phone: 432-558-5928	
Witness: Kerry Fortner - OCD	

399-3221

INSTRUCTIONS ON BACK OF THIS FORM

PRINTED IN U.S.A. 6 PM



Graphic Controls

DATE 9-17-19
BR 2221

NOON

MIDNIGHT

6 AM

7

8

9

10

1

2

3

4

5

6 PM

7

8

9

10

11

1

2

3

4

5

9

3 1/2 W/5 A 26

W/1 M/10 A 20

W/1 M/10 A 20

3 1/2 W/5 A 26

W/1 M/10 A 20

W/1 M/10 A 20

3 1/2 W/5 A 26

W/1 M/10 A 20

W/1 M/10 A 20

3 1/2 W/5 A 26

W/1 M/10 A 20

W/1 M/10 A 20

3 1/2 W/5 A 26

W/1 M/10 A 20

W/1 M/10 A 20

3 1/2 W/5 A 26

W/1 M/10 A 20

W/1 M/10 A 20

3 1/2 W/5 A 26

W/1 M/10 A 20

W/1 M/10 A 20

3 1/2 W/5 A 26

W/1 M/10 A 20

W/1 M/10 A 20

3 1/2 W/5 A 26

W/1 M/10 A 20

W/1 M/10 A 20

3 1/2 W/5 A 26

W/1 M/10 A 20

W/1 M/10 A 20

3 1/2 W/5 A 26

W/1 M/10 A 20

W/1 M/10 A 20

3 1/2 W/5 A 26

W/1 M/10 A 20

W/1 M/10 A 20

3 1/2 W/5 A 26

W/1 M/10 A 20

W/1 M/10 A 20

3 1/2 W/5 A 26

W/1 M/10 A 20

W/1 M/10 A 20

3 1/2 W/5 A 26

W/1 M/10 A 20

W/1 M/10 A 20

3 1/2 W/5 A 26

W/1 M/10 A 20

W/1 M/10 A 20

3 1/2 W/5 A 26

W/1 M/10 A 20

W/1 M/10 A 20

3 1/2 W/5 A 26

W/1 M/10 A 20

W/1 M/10 A 20

3 1/2 W/5 A 26

W/1 M/10 A 20

W/1 M/10 A 20

3 1/2 W/5 A 26

W/1 M/10 A 20

W/1 M/10 A 20

3 1/2 W/5 A 26

W/1 M/10 A 20

W/1 M/10 A 20

3 1/2 W/5 A 26

W/1 M/10 A 20

W/1 M/10 A 20

3 1/2 W/5 A 26

W/1 M/10 A 20

W/1 M/10 A 20

3 1/2 W/5 A 26

W/1 M/10 A 20

W/1 M/10 A 20

3 1/2 W/5 A 26

W/1 M/10 A 20

W/1 M/10 A 20

3 1/2 W/5 A 26

W/1 M/10 A 20

W/1 M/10 A 20

3 1/2 W/5 A 26

W/1 M/10 A 20

W/1 M/10 A 20

3 1/2 W/5 A 26

W/1 M/10 A 20

W/1 M/10 A 20

3 1/2 W/5 A 26

W/1 M/10 A 20

W/1 M/10 A 20

3 1/2 W/5 A 26

W/1 M/10 A 20

W/1 M/10 A 20

3 1/2 W/5 A 26

W/1 M/10 A 20

W/1 M/10 A 20

3 1/2 W/5 A 26

W/1 M/10 A 20

W/1 M/10 A 20

3 1/2 W/5 A 26

W/1 M/10 A 20

W/1 M/10 A 20

3 1/2 W/5 A 26

W/1 M/10 A 20

W/1 M/10 A 20

3 1/2 W/5 A 26

W/1 M/10 A 20

W/1 M/10 A 20

3 1/2 W/5 A 26

W/1 M/10 A 20

W/1 M/10 A 20

3 1/2 W/5 A 26

W/1 M/10 A 20

W/1 M/10 A 20

3 1/2 W/5 A 26

W/1 M/10 A 20

W/1 M/10 A 20

3 1/2 W/5 A 26

W/1 M/10 A 20

W/1 M/10 A 20

3 1/2 W/5 A 26

W/1 M/10 A 20

W/1 M/10 A 20

3 1/2 W/5 A 26

W/1 M/10 A 20

W/1 M/10 A 20

3 1/2 W/5 A 26

W/1 M/10 A 20

W/1 M/10 A 20

3 1/2 W/5 A 26

W/1 M/10 A 20

W/1 M/10 A 20

3 1/2 W/5 A 26

W/1 M/10 A 20

W/1 M/10 A 20

3 1/2 W/5 A 26

W/1 M/10 A 20

W/1 M/10 A 20

3 1/2 W/5 A 26

W/1 M/10 A 20

W/1 M/10 A 20

3 1/2 W/5 A 26

W/1 M/10 A 20

W/1 M/10 A 20

3 1/2 W/5 A 26

W/1 M/10 A 20

W/1 M/10 A 20

3 1/2 W/5 A 26

W/1 M/10 A 20

W/1 M/10 A 20

3 1/2 W/5 A 26

W/1 M/10 A 20

W/1 M/10 A 20

3 1/2 W/5 A 26

W/1 M/10 A 20

W/1 M/10 A 20