

F/P

DISTRICT I
1625 N. French Dr., Hobbs, NM 88240
Phone: (575) 393-6161 Fax: (575) 393-0720

DISTRICT II
811 S. First St., Artesia, NM 88210
Phone: (575) 748-1283 Fax: (575) 748-9720

DISTRICT III
1000 Rio Brazos Road, Aztec, NM 87410
Phone: (505) 334-6178 Fax: (505) 334-6170

DISTRICT IV
1220 S. St. Francis Dr., Santa Fe, NM 87505
Phone: (505) 476-3460 Fax: (505) 476-3462

State of New Mexico
Energy, Minerals & Natural Resources Department
OIL CONSERVATION DIVISION
1220 South St. Francis Dr.
Santa Fe, New Mexico 87505

Form C-102
Revised August 1, 2011
Submit one copy to appropriate
District Office

DIAMENDED REPORT

HOBBS OCD
REC 02 2019
RECEIVED

WELL LOCATION AND ACREAGE DEDICATION UNIT

API Number 20-024 4 6552	Pool Code 98228	Well Name WC-025 G-09 S24 36D; UPR WOLFCAMP
Property Code 317637 226453	Property Name SIOUX 25-36 STATE FED COM	Well Number 11H
OGRID No. 249099	Operator Name CAZA OPERATING, LLC	Elevation 3086'

Surface Location

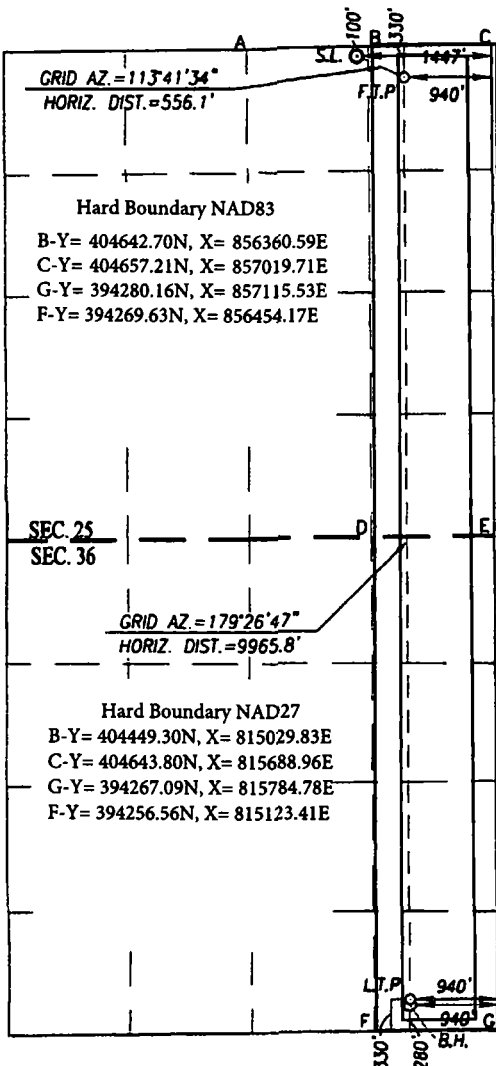
UL or lot No.	Section	Township	Range	Lot Idn	Feet from the	North/South line	Feet from the	East/West line	County
B	25	25-S	35-E		100	NORTH	1447	EAST	LEA

Bottom Hole Location If Different From Surface

UL or lot No.	Section	Township	Range	Lot Idn	Feet from the	North/South line	Feet from the	East/West line	County
P	36	25-S	35-E		280	SOUTH	940	EAST	LEA

Dedicated Acres	Joint or Infill	Consolidation Code	Order No.
320			

NO ALLOWABLE WILL BE ASSIGNED TO THIS COMPLETION UNTIL ALL INTERESTS HAVE BEEN CONSOLIDATED OR A NON-STANDARD UNIT HAS BEEN APPROVED BY THE DIVISION



SCALE: 1"=2000'

GEODETIC COORDINATES NAD 83 NME SURFACE LOCATION Y= 404639.8 N X= 855900.7 E LAT.=32.108359° N LONG.=103.317401° W	GEODETIC COORDINATES NAD 27 NME SURFACE LOCATION Y= 404581.6 N X= 814713.4 E LAT.=32.108232° N LONG.=103.316939° W
FIRST TAKE POINT NAD 83 NME Y= 404416.3 N X= 856409.9 E LAT.=32.107732° N LONG.=103.315764° W	FIRST TAKE POINT NAD 27 NME Y= 404358.2 N X= 815222.5 E LAT.=32.107605° N LONG.=103.315302° W

CORNER COORDINATES TABLE
NAD 27 NME

A - Y= 404666.0 N, X= 813521.3 E
B - Y= 404683.2 N, X= 814840.2 E
C - Y= 404700.3 N, X= 816159.1 E
D - Y= 399395.3 N, X= 814889.2 E
E - Y= 399411.7 N, X= 816210.0 E
F - Y= 394110.8 N, X= 814939.6 E
G - Y= 394123.2 N, X= 816260.9 E

CORNER COORDINATES TABLE
NAD 83 NME

A - Y= 404724.2 N, X= 854708.6 E
B - Y= 404741.4 N, X= 856027.5 E
C - Y= 404758.5 N, X= 857346.5 E
D - Y= 399453.4 N, X= 856076.7 E
E - Y= 399469.8 N, X= 857397.6 E
F - Y= 394168.7 N, X= 856127.3 E
G - Y= 394181.1 N, X= 857448.7 E

LAST TAKE POINT NAD 83 NME Y= 394502.2 N X= 856505.7 E LAT.=32.080480° N LONG.=103.315756° W	LAST TAKE POINT NAD 27 NME Y= 394444.3 N X= 815317.9 E LAT.=32.080353° N LONG.=103.315296° W
--	--

BOTTOM HOLE LOCATION NAD 83 NME Y= 856506.1 E X= 856506.1 E LAT.=32.080342° N LONG.=103.315756° W	BOTTOM HOLE LOCATION NAD 27 NME Y= 394394.3 N X= 815318.4 E LAT.=32.080215° N LONG.=103.315296° W
---	---

OPERATOR CERTIFICATION

I hereby certify that the information herein is true and complete to the best of my knowledge and belief, and that this organization either owns a working interest or unleased mineral interest in the land including the proposed bottom hole location or has a right to drill this well at this location pursuant to a contract with an owner of such mineral or working interest, or to a voluntary pooling agreement or a compulsory pooling order heretofore entered by the division.

Signature: *Steve Morris* Date: 09/15/2018

Printed Name: Steve Morris
E-mail Address: steve.morris@mojoenergy.com

SURVEYOR CERTIFICATION

I hereby certify that the well location shown on this plat was plotted from field notes of actual surveys made by me or under my supervision, and that the same is true and correct to the best of my belief.

JULY 18, 2018

Date of Survey: *09/15/2018*
Signature & Seal of Professional Surveyor:

Certificate Number: 12641
Ronald J. Eidson 3239
LSL JWSC W.O.: 18.11.0815