

District I  
1625 N. French Dr., Hobbs, NM 88240  
Phone: (575) 393-6161 Fax: (575) 393-0720  
District II  
811 S. First St., Artesia, NM 88210  
Phone: (575) 748-1283 Fax: (575) 748-9720  
District III  
1000 Rio Brazos Road, Aztec, NM 87410  
Phone: (505) 334-6178 Fax: (505) 334-6170  
District IV  
1220 S. St. Francis Dr., Santa Fe, NM 87505  
Phone: (505) 476-3460 Fax: (505) 476-3462

State of New Mexico  
Energy, Minerals & Natural Resources Department  
OIL CONSERVATION DIVISION  
1220 South St. Francis Dr.  
Santa Fe, NM 87505

Form C-102  
Revised August 1, 2011  
Submit one copy to appropriate  
District Office

**AMENDED REPORT**

WELL LOCATION AND ACREAGE DEDICATION PLAT

<sup>1</sup> API Number <b>30-025-46016</b>		<sup>2</sup> Pool Code <b>98094</b>		<sup>3</sup> Pool Name <b>BOBCAT DRAW; UPR WOLFCAMP</b>	
<sup>4</sup> Property Code <b>316127</b>		<sup>5</sup> Property Name <b>GREEN WAVE 20-17 FED</b>			<sup>6</sup> Well Number <b>3H</b>
<sup>7</sup> OGRID No. <b>6137</b>		<sup>8</sup> Operator Name <b>DEVON ENERGY PRODUCTION COMPANY, L.P.</b>			<sup>9</sup> Elevation <b>3344.6</b>

<sup>10</sup> Surface Location

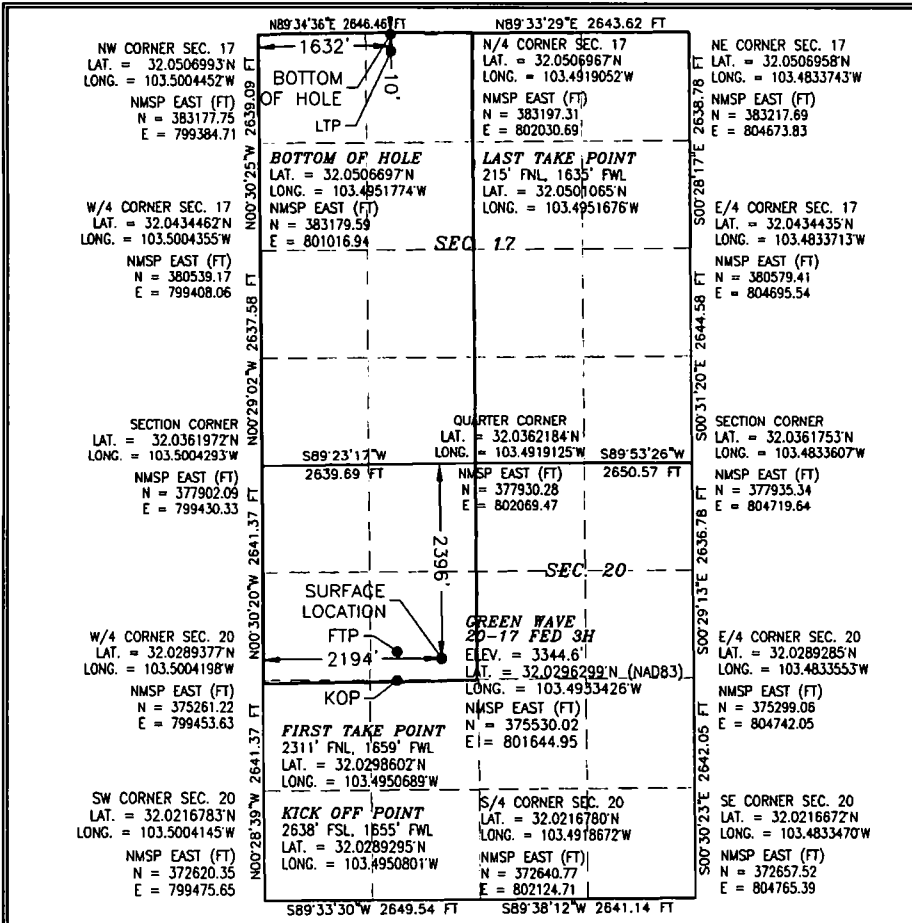
UL or lot no.	Section	Township	Range	Lot Idn	Feet from the	North/South line	Feet from the	East/West line	County
<b>F</b>	<b>20</b>	<b>26 S</b>	<b>34 E</b>		<b>2396</b>	<b>NORTH</b>	<b>2194</b>	<b>WEST</b>	<b>LEA</b>

<sup>11</sup> Bottom Hole Location If Different From Surface

UL or lot no.	Section	Township	Range	Lot Idn	Feet from the	North/South line	Feet from the	East/West line	County
<b>C</b>	<b>17</b>	<b>26 S</b>	<b>34 E</b>		<b>10</b>	<b>NORTH</b>	<b>1632</b>	<b>WEST</b>	<b>LEA</b>

<sup>12</sup> Dedicated Acres <b>480</b>	<sup>13</sup> Joint or Infill	<sup>14</sup> Consolidation Code	<sup>15</sup> Order No.
---	-------------------------------	----------------------------------	-------------------------

No allowable will be assigned to this completion until all interests have been consolidated or a non-standard unit has been approved by the division.



**" OPERATOR CERTIFICATION**  
I hereby certify that the information contained herein is true and complete to the best of my knowledge and belief, and that this organization either owns a working interest or unleased mineral interest in the land including the proposed bottom hole location or has a right to drill this well at this location pursuant to a contract with an owner of such a mineral or working interest, or to a voluntary pooling agreement or a compulsory pooling order heretofore entered by the division.  
**Rebecca Deal** 1/6/2020  
Signature Date  
**Rebecca Deal, Regulatory Analyst**  
Printed Name  
**rebecca.deal@dvn.com**  
E-mail Address

**" SURVEYOR CERTIFICATION**  
I hereby certify that the well location shown on this plat was plotted from field notes of actual surveys made by me or under my supervision, and that the same is true and correct to the best of my belief.  
FEBRUARY 18, 2019  
Date of Survey  
**WILMON F. JARAMILA**  
Signature and Seal of Professional Surveyor  
Certificate Number: FILM... PLS 12797  
SURVEY NO. 6388A

Intent  As Drilled

API # 30-025-46016		
Operator Name: DEVON ENERGY PRODUCTION COMPANY, L.P.	Property Name: GREEN WAVE 20-17 FED	Well Number 3H

Kick Off Point (KOP)

UL	Section	Township	Range	Lot	Feet	From N/S	Feet	From E/W	County
K	20	26S	34E		2638	SOUTH	1655	WEST	LEA
Latitude 32.0289295					Longitude 103.4950801				NAD 83

First Take Point (FTP)

UL	Section	Township	Range	Lot	Feet	From N/S	Feet	From E/W	County
F	20	26S	34E		2311	NORTH	1659	WEST	LEA
Latitude 32.0298602					Longitude 103.4950689				NAD 83

Last Take Point (LTP)

UL	Section	Township	Range	Lot	Feet	From N/S	Feet	From E/W	County
C	17	26S	34E		215	NORTH	1635	WEST	LEA
Latitude 32.0501065					Longitude 103.4951676				NAD 83

Is this well the defining well for the Horizontal Spacing Unit?

Is this well an infill well?

If infill is yes please provide API if available, Operator Name and well number for Defining well for Horizontal Spacing Unit.

API #		
Operator Name:	Property Name:	Well Number

KZ 06/29/2018