

Submit 3 Copies To Appropriate District Office
 District I
 1625 N. French Dr., Hobbs, NM 88240
 District II
 1301 W. Grand Ave., Artesia, NM 88210
 District III
 1000 Rio Brazos Rd., Aztec, NM 87410
 District IV
 1220 S. St. Francis Dr., Santa Fe, NM 87505

State of New Mexico
 Energy, Minerals and Natural Resources

Form C-103
 May 27, 2004

OIL CONSERVATION DIVISION
 1220 South St. Francis Dr.
 Santa Fe, NM 87505

WELL API NO. 30-025-11336
5. Indicate Type of Lease STATE <input checked="" type="checkbox"/> FEE <input type="checkbox"/>
6. State Oil & Gas Lease No. NMLC032326B
7. Lease Name or Unit Agreement Name LANGLIE MATTIX WOOLWORTH UNIT
8. Well Number 118
9. OGRID Number
10. Pool name or Wildcat SEVEN RIVERS & QUEEN

SUNDRY NOTICES AND REPORTS ON WELLS
 (DO NOT USE THIS FORM FOR PROPOSALS TO DRILL OR TO DEEPEN OR PLUG BACK TO A DIFFERENT RESERVOIR. USE "APPLICATION FOR PERMIT" (FORM C-101) FOR SUCH PROPOSALS.)

1. Type of Well: Oil Well Gas Well Other INJECTION

2. Name of Operator
BETWELL OIL & GAS

3. Address of Operator
P.O. BOX 22577, HIALEAH, FLORIDA 33002

4. Well Location
 Unit Letter B : 660 feet from the NORTH line and 1980 feet from the EAST line
 Section 33 Township 24S Range 37E NMPM LEA County

11. Elevation (Show whether DR, RKB, RT, GR, etc.)
3240 RT

Pit or Below-grade Tank Application or Closure

Pit type _____ Depth to Groundwater _____ Distance from nearest fresh water well _____ Distance from nearest surface water _____

Pit Liner Thickness: _____ mil Below-Grade Tank: Volume _____ bbls; Construction Material _____

12. Check Appropriate Box to Indicate Nature of Notice, Report or Other Data

NOTICE OF INTENTION TO:		SUBSEQUENT REPORT OF:	
PERFORM REMEDIAL WORK <input type="checkbox"/>	PLUG AND ABANDON <input checked="" type="checkbox"/>	REMEDIAL WORK <input type="checkbox"/>	ALTERING CASING <input type="checkbox"/>
TEMPORARILY ABANDON <input type="checkbox"/>	CHANGE PLANS <input type="checkbox"/>	COMMENCE DRILLING OPNS. <input type="checkbox"/>	P AND A <input type="checkbox"/>
PULL OR ALTER CASING <input type="checkbox"/>	MULTIPLE COMPL <input type="checkbox"/>	CASING/CEMENT JOB <input type="checkbox"/>	
OTHER: <input type="checkbox"/>		OTHER: <input type="checkbox"/>	

13. Describe proposed or completed operations. (Clearly state all pertinent details, and give pertinent dates, including estimated date of starting any proposed work). SEE RULE 1103. For Multiple Completions: Attach wellbore diagram of proposed completion or recompletion.

Will plug and abandon ASAP

**THE OIL CONSERVATION DIVISION MUST
 BE NOTIFIED 24 HOURS PRIOR TO THE
 BEGINNING OF PLUGGING OPERATIONS.**



I hereby certify that the information above is true and complete to the best of my knowledge and belief. I further certify that any pit or below-grade tank has been/will be constructed or closed according to NMOCD guidelines , a general permit or an (attached) alternative OCD-approved plan .

SIGNATURE [Signature] TITLE PLUGGER - FOREMAN DATE 4-20-2006

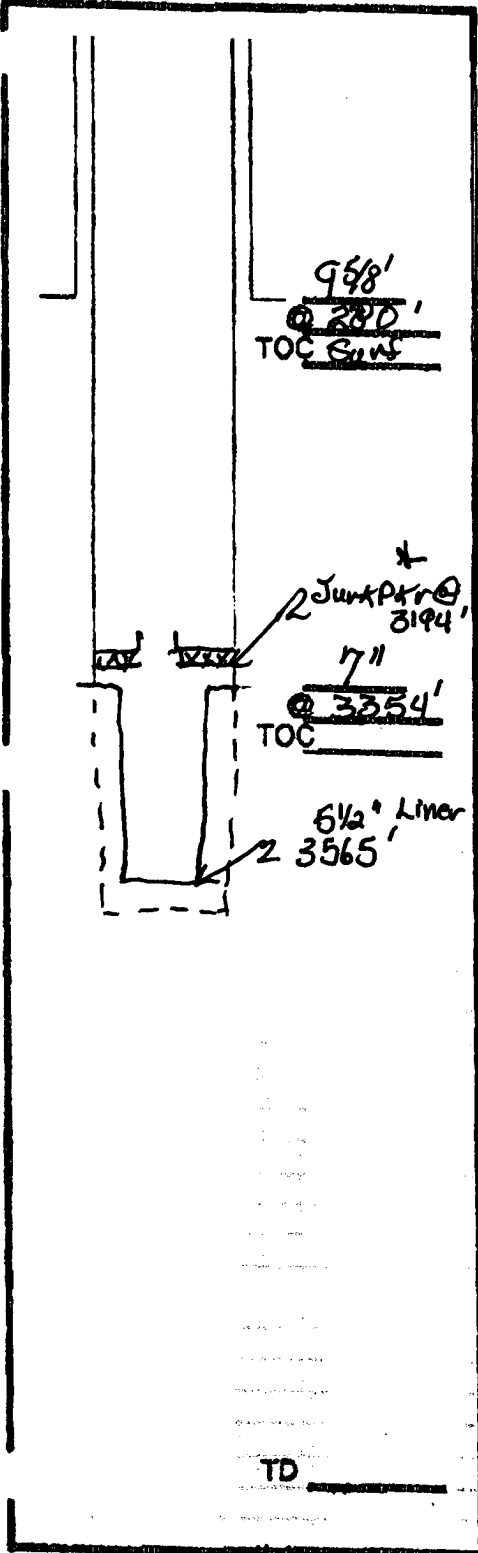
Type or print name Chris Williams E-mail address: _____ Telephone No. _____
 For State Use Only OC DISTRICT SUPERVISOR/GENERAL MANAGER

APPROVED BY: Chris Williams TITLE _____ DATE JUN 15 2006
 Conditions of Approval (if any): _____

PLUGGING & ABANDONMENT WORKSHEET (2 STRING CSNG)

OPERATOR Between Oil & Gas
 LEASENAME hmcw

SECT 33 TWN 24S RNG 37E WELL # 118
 FROM 660 (NSL) 1980 (EWL)
 TD: 3203' FORMATION @ TD Seven Rivers + Queen
 PBTD: 3565' FORMATION @ PBTD



	SIZE	SET @	TOC	TOC DETERMINED BY
SURFACE	9 5/8"	280'	SWS	Visual
INTMED 1	7"	3354'	400 SWS	1200' CAL.
INTMED 2				
PROD				

	SIZE	TOP	BOT	TOC	DETERMINED BY
LINER 1	5 1/2"	3354'	3565'	N/A	
LINER 2					

	CUT & PULL @	TOP - BOTTOM
INTMED 1		PERF
INTMED 2		UPERHOLE
PROD		

***REQUIRED PLUGS DISTRICT!**

PLUG #	TYPE	BACKS	DEPTH
PLUG 01	OH	35 SXS	6400'
PLUG 02	STOR	50 SXS	5250'-5450'
PLUG 03	CIRPASS		4800'
PLUG 04	CIRP	25 SXS	4800'
PLUG 05	STUB	50 SXS	3600'-3700'
PLUG 06	RETNR SIZ	200 SXS	400'
PLUG 07	BLRF	18 SXS	0-10'
PLUG 08			
PLUG 09			
PLUG 10			
PLUG 11			
PLUG 12			
PLUG 13			
PLUG 14			
PLUG 15			
PLUG 16			
PLUG 17			
PLUG 18			
PLUG 19			
PLUG 20			
PLUG 21			
PLUG 22			
PLUG 23			
PLUG 24			
PLUG 25			
PLUG 26			
PLUG 27			
PLUG 28			
PLUG 29			
PLUG 30			
PLUG 31			
PLUG 32			
PLUG 33			
PLUG 34			
PLUG 35			
PLUG 36			
PLUG 37			
PLUG 38			
PLUG 39			
PLUG 40			
PLUG 41			
PLUG 42			
PLUG 43			
PLUG 44			
PLUG 45			
PLUG 46			
PLUG 47			
PLUG 48			
PLUG 49			
PLUG 50			

PLUG #	TYPE	BACKS	DEPTH
PLUG 01	OH	35 SXS	6400'
PLUG 02	STOR	50 SXS	5250'-5450'
PLUG 03	CIRPASS		4800'
PLUG 04	CIRP	25 SXS	4800'
PLUG 05	STUB	50 SXS	3600'-3700'
PLUG 06	RETNR SIZ	200 SXS	400'
PLUG 07	BLRF	18 SXS	0-10'
PLUG 08			
PLUG 09			
PLUG 10			
PLUG 11			
PLUG 12			
PLUG 13			
PLUG 14			
PLUG 15			
PLUG 16			
PLUG 17			
PLUG 18			
PLUG 19			
PLUG 20			
PLUG 21			
PLUG 22			
PLUG 23			
PLUG 24			
PLUG 25			
PLUG 26			
PLUG 27			
PLUG 28			
PLUG 29			
PLUG 30			
PLUG 31			
PLUG 32			
PLUG 33			
PLUG 34			
PLUG 35			
PLUG 36			
PLUG 37			
PLUG 38			
PLUG 39			
PLUG 40			
PLUG 41			
PLUG 42			
PLUG 43			
PLUG 44			
PLUG 45			
PLUG 46			
PLUG 47			
PLUG 48			
PLUG 49			
PLUG 50			

TD _____

Betwell Oil & Gas Company
 Orig. Phillips - Woolworth #8

LEASE AREA NAME <i>Langlic Mattix Woolworth Unit</i>	WELL NO. <i>118</i>
PROJECT NO.	

INDIVIDUAL WELL RECORD

LOCATION SECTION <i>Sec. 33; 660' FNL; 1980' FEL</i>	TWP/BLK <i>T24, S</i>	RNG/SURVEY <i>R37E</i>	COUNTY <i>Lea</i>	STATE <i>New Mexico</i>
FIELD <i>Langlic Mattix Field</i>	TYPE COMPLETION <input type="checkbox"/> OIL <input type="checkbox"/> GAS <input checked="" type="checkbox"/> OTHER <i>WIW</i>		ELEVATION G.L. <i>3283'</i> KB	
DRILLING CONTRACTOR <i>Lee Drlg. Co.</i>		COMPLETION CONTRACTOR		
PERMANENT DATUM FT. ABOVE G.L.				

GENERAL INFORMATION	TOOLS	DATE COMMENCED	DATE COMPLETED	DEPTH FROM	DEPTH TO	CONTRACT PRICE PER FOOT	DAY WORK W/D.P. \$	WO/D.P. \$
	ROTARY	<i>6/8/39</i>		<i>0</i>	<i>3565'</i>	<i>Deepened to 3703'</i>		
	COMPLETION		<i>7/7/39</i>					

CASING-CEMENT RECORD	HOLE		CASING				CEMENT			
	SIZE	DEPTH	SET AT	SIZE	WEIGHT	GRADE	COND	#SX	TYPE	CMT. TOP
			<i>280'</i>	<i>9 5/8"</i>	<i>25#</i>			<i>170</i>		
			<i>335A'</i>	<i>7"</i>	<i>24#</i>			<i>400</i>		
			<i>3293'-3565'</i>	<i>5 1/2"</i>	<i>14#</i>	<i>Slotted Liner</i>				

CORES	INTERVAL	FORMATION	RECOVERY AND DESCRIPTION (Full analysis submitted separately)

DRILL STEM TESTS	INTERVAL	FORMATION	TIME OPEN	RECOVERY & PRESSURE DATA (Full analysis submitted separately)

LOGGING	TYPE LOG	LOGGING COMPANY	INTERVAL LOGGED	REMARKS

PERFORATED INTERVALS: <i>OH 3565' - 3703'</i>	PERFORATING COMPANY	TYPE GUN	NO. SHOTS PER FOOT
--	---------------------	----------	--------------------

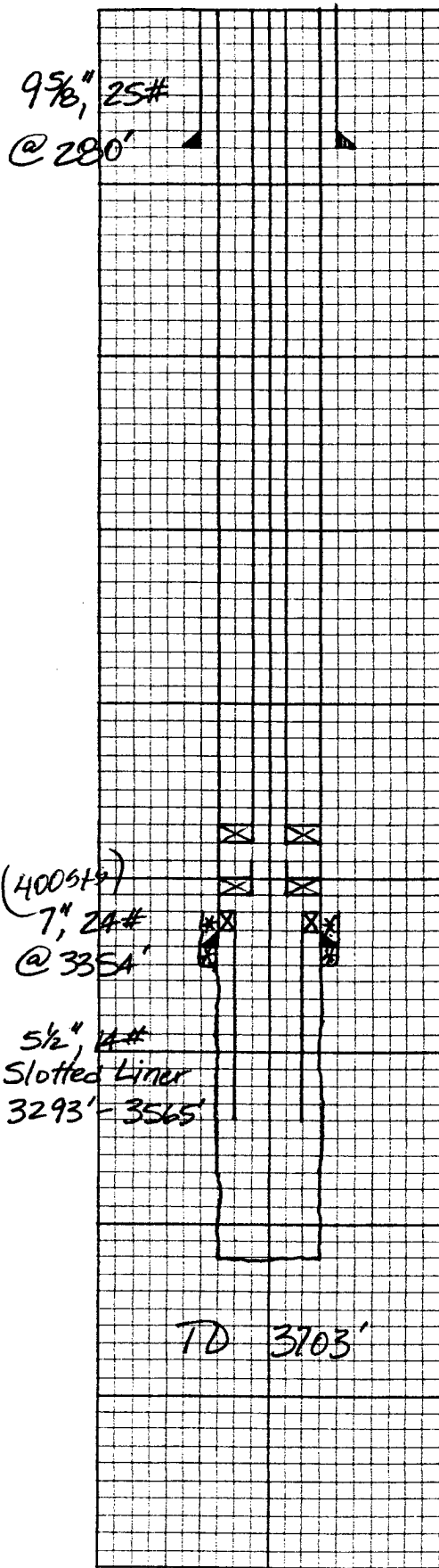
PRODUCING FORMATION(S) *Seven Rivers* DEPTH, TOP OF FORMATION _____
Queen

ZONES TO BE TESTED BEFORE ABANDONMENT:

PRODUCTION	DATE FIRST PROD.	ZONE	BOPD	OIL GVTY.	BWPD	GAS MCFD.	GOR	BHP
		<i>8/2/39</i>	<i>Seven Rivers - Queen</i>	<i>6 hrs. 208 B0</i>				

FLOWING PRESSURE	CHOKE SIZE	SHUT IN PRESSURE
TUBING: PUMPING	CASING:	TUBING: CASING:
SPM:	STROKE LENGTH:	

SCHEMATIC OF DOWNHOLE EQUIPMENT



PURCHASER:
 OIL
 GAS WELL GAS:
 CSG. HD. GAS:

DRILLING DATA

BRIEF RESUME ON MUD SYSTEM, LOST CIRCULATION ZONES, FISHING, DRILLING PROBLEMS, MUD COSTS.

6/39 - Spudded

COMPLETION DATA

BRIEF RESUME ON PROCEDURE

8/64 - Hole in csg. 768'-776'. Squeezed w/ 100 SK.

12/67 - Drld 4 3/4" hole from 3565'-3703'.
 Acid OH 3590-3703' w/500 gals. 7%.

10/74 - Left 7" Baker Model AD Pkr. in h. @ 3194'.

1/81 - Tagged 3166'.

EQUIPMENT

TUBING	SIZE	2 3/8"	TYPE	IPC	GRADE
	NO. JOINTS	102	DEPTH	3163'	S.N. DEPTH
WAS TUBING RUN OPEN ENDED					
			<input type="checkbox"/> YES <input type="checkbox"/> NO		
PACKER	SIZE	2 3/8" x 7"	MAKE	Johnston	
	TYPE	101-S (Set 17,000 # Tension)			SETTING DEPTH
					3163'
RODS	SIZE		NO.	SIZE	NO.
	SIZE		NO.	SIZE	NO.
SUB SURFACE PUMP		MAKE		SIZE	TYPE
PUMPING UNIT		MAKE			SIZE
PRIME MOVER		MAKE			SIZE/H.P.
SPECIAL EQUIPMENT					
REMARKS					

MAYO MARRS CASING PULLING INC.
BOX 863
KERMIT, TEXAS 79745

BETWELL OIL & GAS

Lease: LANGLIE MATTIX WOOLWORTH UNIT # 118
Project: P & A – CEMENTING REPORT

API # 30-025-11336

SET CIBP @ 3,190' – SPOT 15 SXS ON TOP
SPOT 25 SXS @ 2800'-2700' & TAG
PERFORATE @ 1350'-SQUEEZE 40 SXS @ 1350'-1250' & TAG
PERFORATE @ 330'-SQUEEZE 70 SXS @ 330'- 230' & TAG
SPOT 15 SXS @ ~~50~~' TO SURFACE

60

INSTALL DRY HOLE MARKER
CIRCULATE 10# MUD