

OK

State of New Mexico

Energy, Minerals and Natural Resources Department

DISTRICT I  
1625 N. FRENCH DR., HOBBS, NM 88240

DISTRICT II  
1301 W. GRAND AVENUE, ARTESIA, NM 88210

DISTRICT III  
1000 Rio Brazos Rd., Aztec, NM 87410

DISTRICT IV  
1220 S. ST. FRANCIS DR., SANTA FE, NM 87505

OIL CONSERVATION DIVISION  
1220 SOUTH ST. FRANCIS DR.  
Santa Fe, New Mexico 87505

Form C-102  
Revised October 12, 2005  
Submit to Appropriate District Office  
State Lease - 4 Copies  
Fee Lease - 3 Copies

WELL LOCATION AND ACREAGE DEDICATION PLAT

AMENDED REPORT

API Number <b>30-025-37970</b>	Pool Code <b>50350/96601</b>	Penrose <b>Skelly Grayburg</b>	Pool Name <b>Hare</b>
Property Code <b>23112</b>	Property Name <b>SOUTHLAND ROYALTY A</b>		Well Number <b>24</b>
OGRID No. <b>873</b>	Operator Name <b>APACHE CORPORATION</b>		Elevation <b>3469'</b>

Surface Location

UL or lot No.	Section	Township	Range	Lot Idn	Feet from the	North/South line	Feet from the	East/West line	County
1	4	21-S	37-E		1920	SOUTH	990	EAST	LEA

Bottom Hole Location If Different From Surface

UL or lot No.	Section	Township	Range	Lot Idn	Feet from the	North/South line	Feet from the	East/West line	County

Dedicated Acres	Joint or Infill	Consolidation Code	Order No.

NO ALLOWABLE WILL BE ASSIGNED TO THIS COMPLETION UNTIL ALL INTERESTS HAVE BEEN CONSOLIDATED OR A NON-STANDARD UNIT HAS BEEN APPROVED BY THE DIVISION

LOT 4	LOT 3	LOT 2	LOT 1
37.85 AC LOT 5	37.87 AC LOT 6	37.89 AC LOT 7	37.91 AC LOT 8
40.00 AC LOT 12	40.00 AC LOT 11	40.00 AC LOT 10	40.00 AC LOT 9
40.00 AC LOT 13	40.00 AC LOT 14	40.00 AC LOT 15	40.00 AC LOT 16
40.00 AC	40.00 AC	40.00 AC	40.00 AC

GEODETTIC COORDINATES  
NAD 27 NME

Y=549720.1 N  
X=861048.8 E

LAT.=32.505839° N  
LONG.=103.162199° W

LAT.=32°30'21.02" N  
LONG.=103°09'43.92" W

**OPERATOR CERTIFICATION**

*I hereby certify that the information herein is true and complete to the best of my knowledge and belief, and that this organization either owns a working interest or unleased mineral interest in the land including the proposed bottom hole location or has a right to drill this well at this location pursuant to a contract with an owner of such mineral or working interest, or to a voluntary pooling agreement or a compulsory pooling order heretofore entered by the division.*

Signature Date  
 Lana Williams  
 Printed Name

---

**SURVEYOR CERTIFICATION**

*I hereby certify that the well location shown on this plat was plotted from field notes of actual surveys made by me or under my supervision, and that the same is true and correct to the best of my belief.*

JULY 7, 2006

Date Surveyed \_\_\_\_\_ JR

Signature & Seal  
  
 Professional Surveyor  
 Gary A. Edson 7/19/06  
 06.11.1110

Certificate No. GARY-EDSON 12641

DISTRICT I  
1625 N. FRENCH DR., BOBBS, NM 88240

DISTRICT II  
1301 W. GRAND AVENUE, ARTESIA, NM 88210

DISTRICT III  
1000 Rio Brazos Rd., Aztec, NM 87410

DISTRICT IV  
1220 S. ST. FRANCIS DR., SANTA FE, NM 87505

State of New Mexico  
Energy, Minerals and Natural Resources Department

OIL CONSERVATION DIVISION  
1220 SOUTH ST. FRANCIS DR.  
Santa Fe, New Mexico 87505

Form C-102  
Revised October 12, 2005  
Submit to Appropriate District Office  
State Lease - 4 Copies  
Fee Lease - 3 Copies

WELL LOCATION AND ACREAGE DEDICATION PLAT

AMENDED REPORT

API Number	Pool Code	Pool Name
Property Code	Property Name <b>SOUTHLAND ROYALTY A</b>	Well Number 24
OGRID No.	Operator Name <b>APACHE CORPORATION</b>	Elevation 3469'

Surface Location

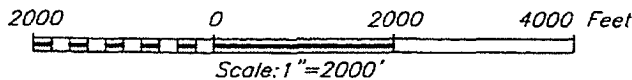
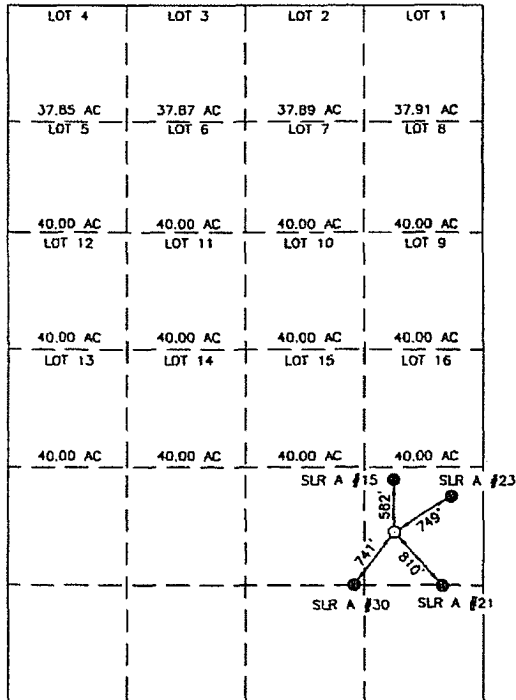
UL or lot No.	Section	Township	Range	Lot Idn	Feet from the	North/South line	Feet from the	East/West line	County
1	4	21-S	37-E		1920	SOUTH	990	EAST	LEA

Bottom Hole Location If Different From Surface

UL or lot No.	Section	Township	Range	Lot Idn	Feet from the	North/South line	Feet from the	East/West line	County

Dedicated Acres	Joint or Infill	Consolidation Code	Order No.

NO ALLOWABLE WILL BE ASSIGNED TO THIS COMPLETION UNTIL ALL INTERESTS HAVE BEEN CONSOLIDATED  
OR A NON-STANDARD UNIT HAS BEEN APPROVED BY THE DIVISION



OPERATOR CERTIFICATION

I hereby certify that the information herein is true and complete to the best of my knowledge and belief, and that this organization either owns a working interest or unleased mineral interest in the land including the proposed bottom hole location or has a right to drill this well at this location pursuant to a contract with an owner of such mineral or working interest, or to a voluntary pooling agreement or a compulsory pooling order heretofore entered by the division.

*Lana Williams* 8/1/06  
Signature Date  
Lana Williams  
Printed Name

SURVEYOR CERTIFICATION

I hereby certify that the well location shown on this plat was plotted from field notes of actual surveys made by me or under my supervision, and that the same is true and correct to the best of my belief.

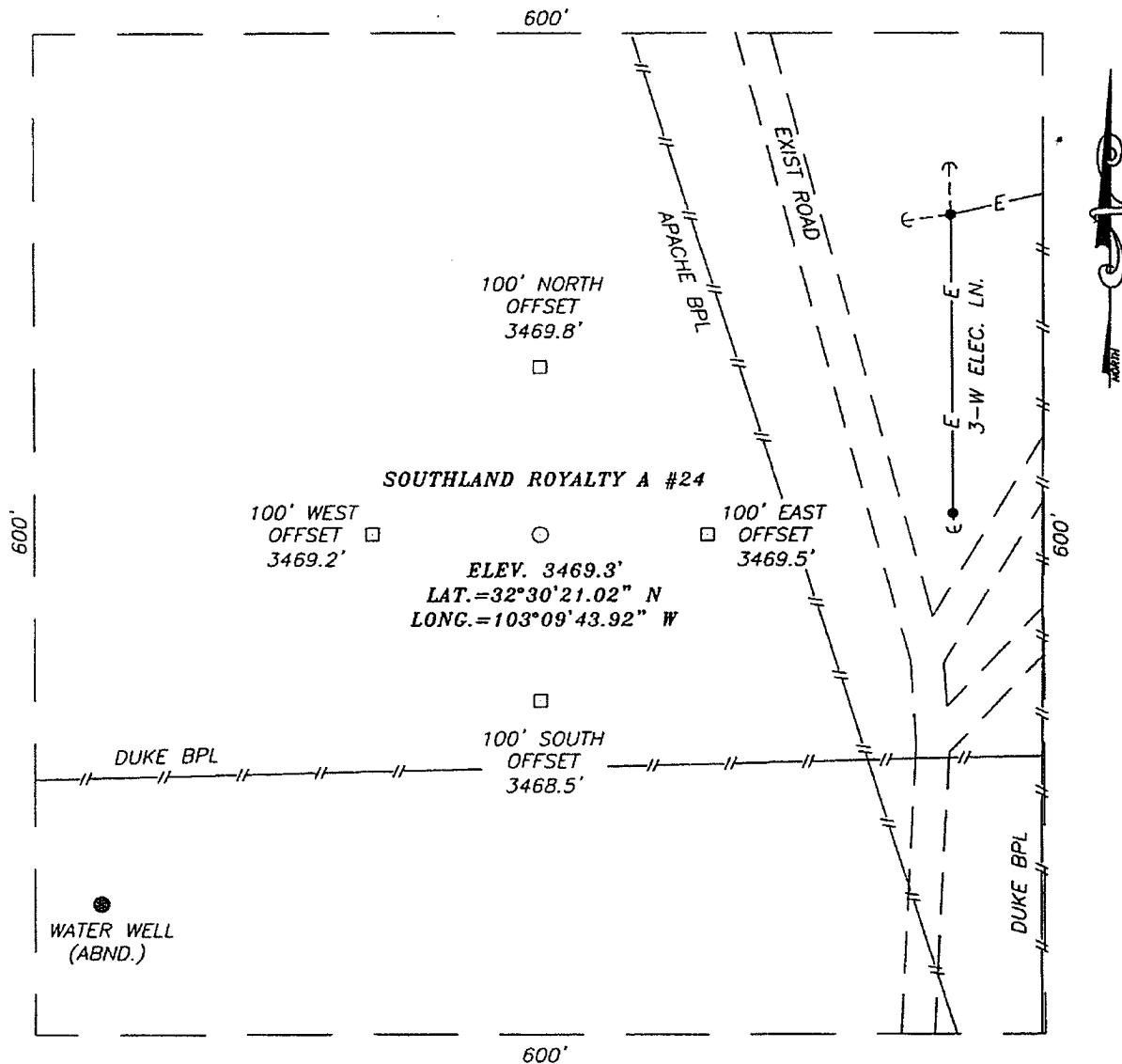
JULY 7, 2006

Date Surveyed JR  
Signature & Seal of  
Professional Surveyor

06.11.1110

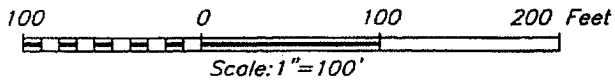
Certificate No. GARY EIDSON 12641

SECTION 4, TOWNSHIP 21 SOUTH, RANGE 37 EAST, N.M.P.M.,  
LEA COUNTY, NEW MEXICO



DIRECTIONS TO LOCATION

FROM THE INTERSECTION OF ST. HWY. #18 AND ST. HWY 207, GO SOUTHWEST ON ST. HWY. 207 APPROX. 2.8 MILES. TURN RIGHT AND GO WEST APPROX. 0.13 MILES. TURN RIGHT AND GO NORTH APPROX. 0.9 MILES. THIS LOCATION IS APPROX. 298 FEET WEST.



APACHE CORPORATION

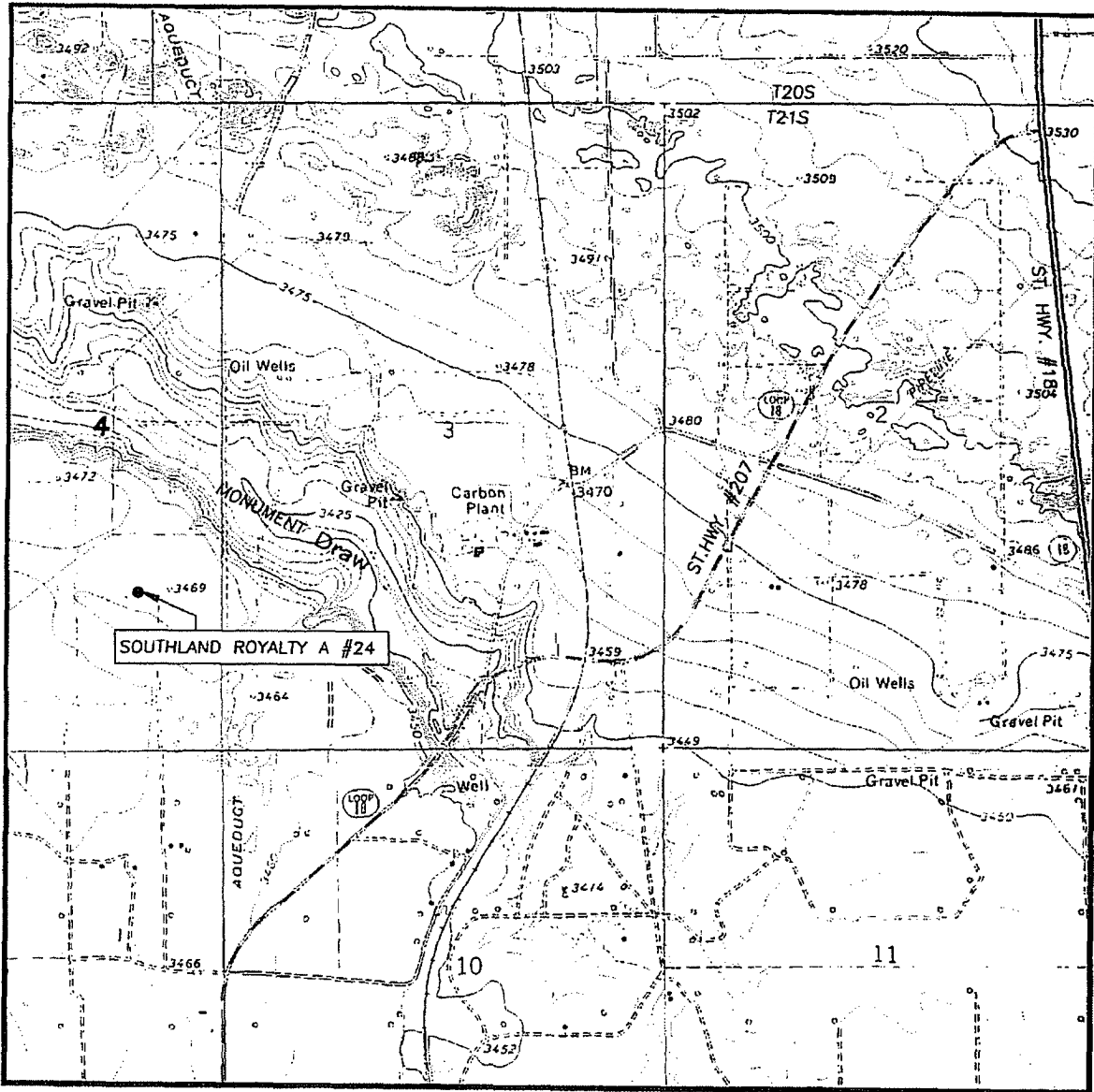
SOUTHLAND ROYALTY A #24 WELL  
 LOCATED 1920 FEET FROM THE SOUTH LINE  
 AND 990 FEET FROM THE EAST LINE OF SECTION 4,  
 TOWNSHIP 21 SOUTH, RANGE 37 EAST, N.M.P.M.,  
 LEA COUNTY, NEW MEXICO.

PROVIDING SURVEYING SERVICES  
 SINCE 1946  
**JOHN WEST SURVEYING COMPANY**  
 412 N. DAL PASO  
 HOBBS, N.M. 88240  
 (505) 393-3117

Survey Date: 07/07/06	Sheet 1 of 1 Sheets
W.O. Number: 06.11.1110	Dr By: D.S.R. Rev 1:N/A
Date: 07/14/06	Disk: CD#6 06111110 Scale: 1"=100'



# LOCATION VERIFICATION MAP



SCALE: 1" = 2000'

CONTOUR INTERVAL:  
 HOBBS SW, N.M. - 5'  
 EUNICE, N.M. - 10'

SEC. 4 TWP. 21-S RGE. 37-E

SURVEY \_\_\_\_\_ N.M.P.M.

COUNTY LEA STATE NEW MEXICO

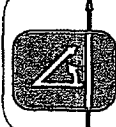
DESCRIPTION 1920' FSL & 990' FEL

ELEVATION 3469'

OPERATOR APACHE CORPORATION

LEASE SOUTHLAND ROYALTY A

U.S.G.S. TOPOGRAPHIC MAP  
 HOBBS SW, N.M.



PROVIDING SURVEYING SERVICES  
 SINCE 1946  
**JOHN WEST SURVEYING COMPANY**  
 412 N. DAL PASO  
 HOBBS, N.M. 88240  
 (505) 393-3117