

OK

State of New Mexico

DISTRICT I
1625 N. FRENCH DR., BOBBS, NM 86240

Energy, Minerals and Natural Resources Department

Form C-102

DISTRICT II
1301 W. GRAND AVENUE, ARTESIA, NM 86210

OIL CONSERVATION DIVISION
1220 SOUTH ST. FRANCIS DR.
Santa Fe, New Mexico 87505

Revised JUNE 10, 2003
Submit to Appropriate District Office
State Lease - 4 Copies
Fee Lease - 3 Copies

DISTRICT III
1000 Rio Brazos Rd., Aztec, NM 87410

DISTRICT IV
1220 S. ST. FRANCIS DR., SANTA FE, NM 87505

WELL LOCATION AND ACREAGE DEDICATION PLAT

AMENDED REPORT

API Number 30-025-38230	Pool Code 22900	Pool Name Eunice Bl-Tu-Dr, North
Property Code 26483	Property Name STATE DA	Well Number 22
OGRD No. 873	Operator Name APACHE CORPORATION	Elevation 3464'

Surface Location

UL or lot No.	Section	Township	Range	Lot Idn	Feet from the	North/South line	Feet from the	East/West line	County
K	16	21-S	37-E		2630	SOUTH	2610	WEST	LEA

Bottom Hole Location If Different From Surface

UL or lot No.	Section	Township	Range	Lot Idn	Feet from the	North/South line	Feet from the	East/West line	County

Dedicated Acres 40	Joint or Infill	Consolidation Code	Order No. NSL-5509
------------------------------	-----------------	--------------------	------------------------------

NO ALLOWABLE WILL BE ASSIGNED TO THIS COMPLETION UNTIL ALL INTERESTS HAVE BEEN CONSOLIDATED OR A NON-STANDARD UNIT HAS BEEN APPROVED BY THE DIVISION

<p>GEODETIC COORDINATES NAD 27 NME</p> <p>Y=539852.0 N X=859472.6 E</p> <p>LAT.=32°28'43.56" N LONG.=103°10'03.58" W</p>	<p>OPERATOR CERTIFICATION</p> <p>I hereby certify the the information contained herein is true and complete to the best of my knowledge and belief.</p> <p><i>Lana Williams</i> Signature</p> <p>Lana Williams Printed Name</p> <p>Engr. Tech Title</p> <p>12/27/06 Date</p>
	<p>SURVEYOR CERTIFICATION</p> <p>I hereby certify that the well location shown on this plat was plotted from field notes of actual surveys made by me or under my supervision and that the same is true and correct to the best of my belief.</p> <p>DECEMBER 19, 2005</p> <p>Date Surveyed _____ JR</p> <p>Signature & Seal of Professional Surveyor <i>Ronald J. Edson</i> 01/06/06 05.11.1983</p> <p>Certificate No. GARY EDSON 12841 RONALD J. EDSON 3239</p>

State of New Mexico

Energy, Minerals and Natural Resources Department

DISTRICT I

1625 N. FRENCH DR., HOBBS, NM 80240

DISTRICT II

1301 W. GRAND AVENUE, ARTESIA, NM 88210

DISTRICT III

1000 Rio Brazos Rd., Aztec, NM 87410

DISTRICT IV

1220 S. ST. FRANCIS DR., SANTA FE, NM 87505

OIL CONSERVATION DIVISION
1220 SOUTH ST. FRANCIS DR.
Santa Fe, New Mexico 87505

Form C-102
Revised JUNE 10, 2003
Submit to Appropriate District Office
State Lease - 4 Copies
Fee Lease - 3 Copies

WELL LOCATION AND ACREAGE DEDICATION PLAT

AMENDED REPORT

API Number	Pool Code	Pool Name
Property Code	Property Name STATE DA	Well Number 22
OGRID No.	Operator Name APACHE CORPORATION	Elevation 3464'

Surface Location

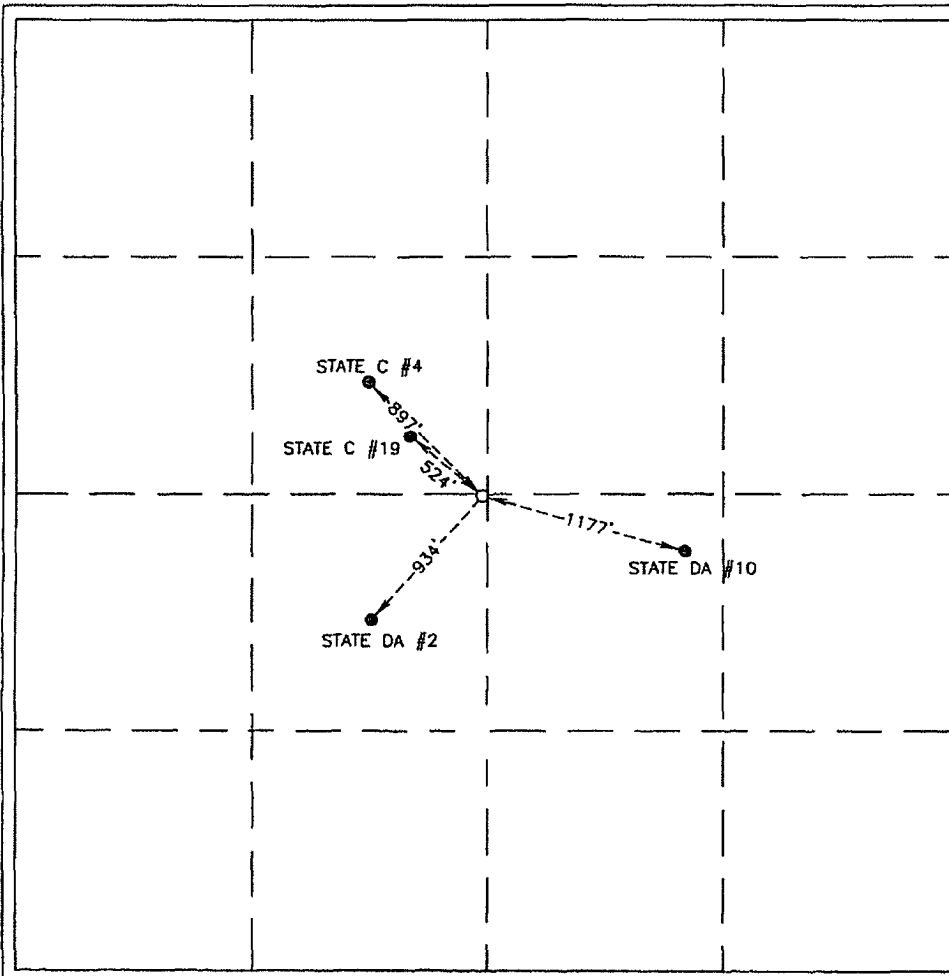
UL or lot No.	Section	Township	Range	Lot Idn	Feet from the	North/South line	Feet from the	East/West line	County
K	16	21-S	37-E		2630	SOUTH	2610	WEST	LEA

Bottom Hole Location If Different From Surface

UL or lot No.	Section	Township	Range	Lot Idn	Feet from the	North/South line	Feet from the	East/West line	County

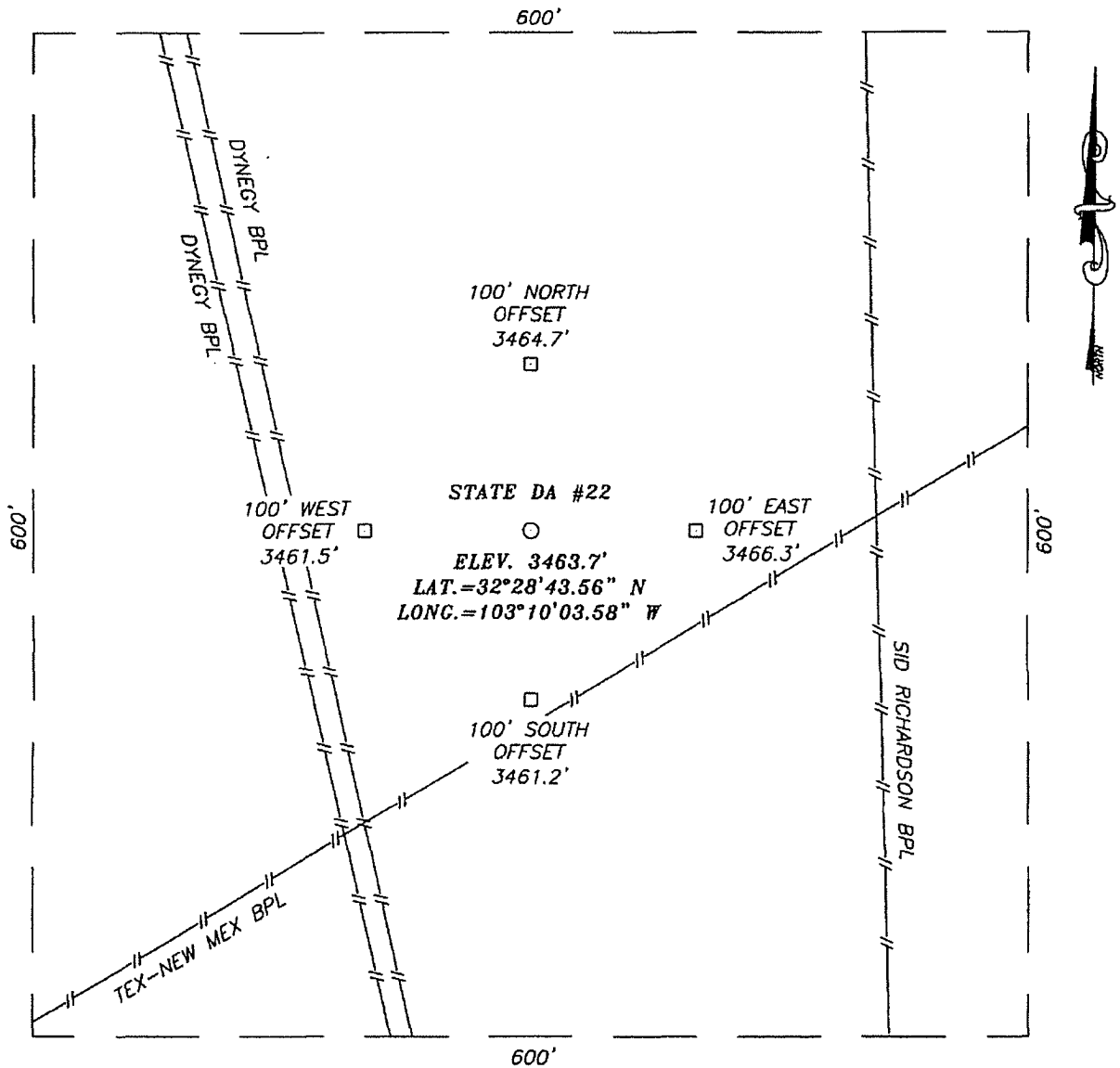
Dedicated Acres	Joint or Infill	Consolidation Code	Order No.

NO ALLOWABLE WILL BE ASSIGNED TO THIS COMPLETION UNTIL ALL INTERESTS HAVE BEEN CONSOLIDATED OR A NON-STANDARD UNIT HAS BEEN APPROVED BY THE DIVISION



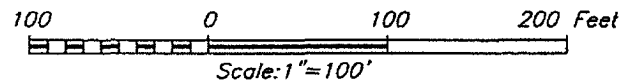
OPERATOR CERTIFICATION	
I hereby certify the the information contained herein is true and complete to the best of my knowledge and belief.	
<i>Lana Williams</i> Signature	
Lana Williams Printed Name	
Engr. Tech Title	
12/27/06 Date	
SURVEYOR CERTIFICATION	
I hereby certify that the well location shown on this plat was plotted from field notes of actual surveys made by me or under my supervision, and that the same is true and correct to the best of my belief.	
DECEMBER 19, 2005	
Date Surveyed	JR
Signature & Seal of Professional Surveyor	
05.11.1983	
Certificate No. GARY EIDSON	12841
RONALD J. EIDSON 3239	

SECTION 16, TOWNSHIP 21 SOUTH, RANGE 37 EAST, N.M.P.M.,
LEA COUNTY, NEW MEXICO



DIRECTIONS TO LOCATION

FROM THE INTERSECTION OF ST. HWY. #207 AND HILL RD., GO SOUTH ON ST. HWY. #207 FOR APPROX. 0.3 MILES. TURN RIGHT (WEST-THRU CATTLEGAURD) AND GO APPROX. 0.4 MILES. TURN RIGHT (NORTH) ALONG DYNEGY P/L APPROX. 750'. THIS LOCATION IS APPROX. 125' EAST.



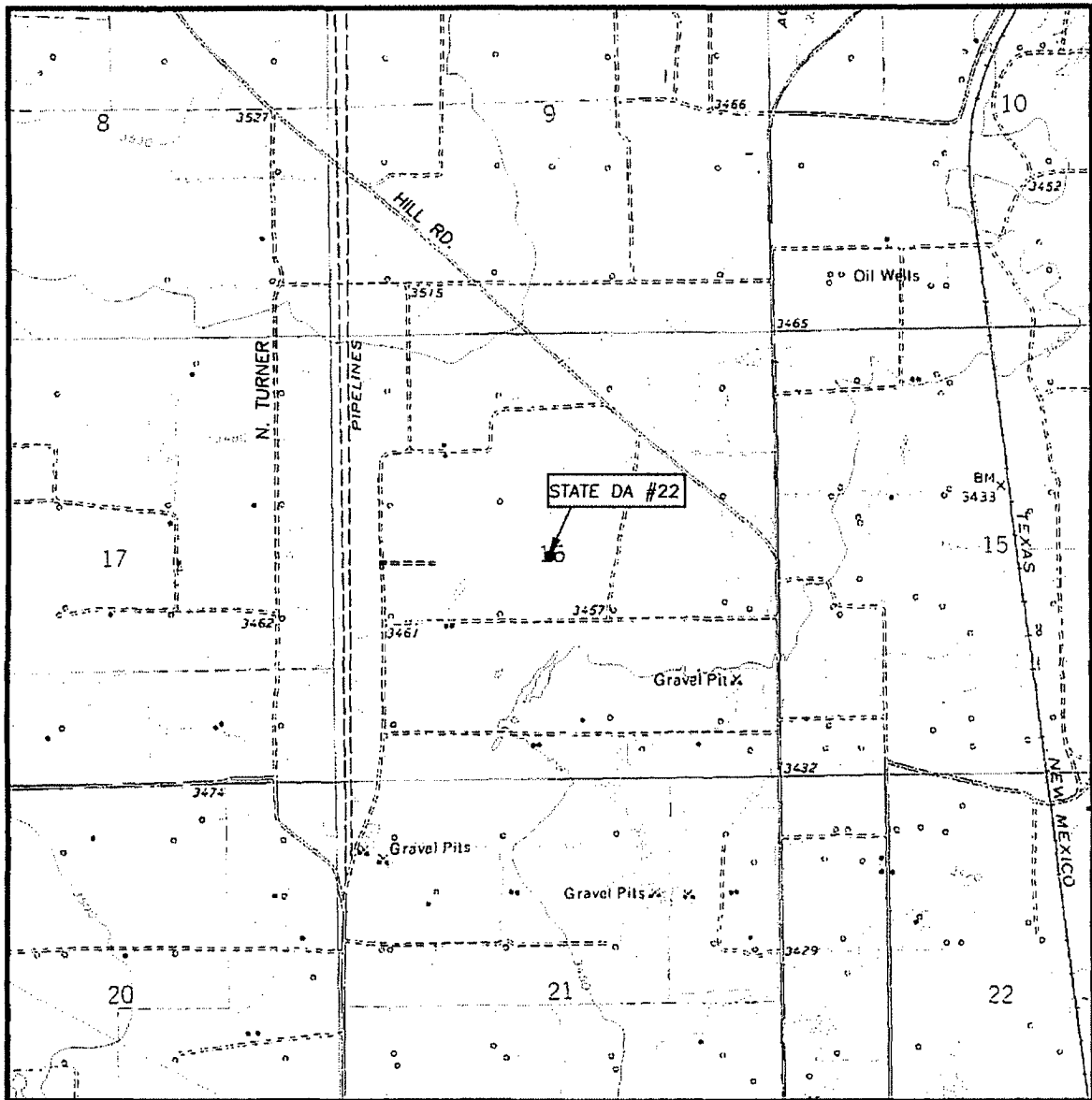
APACHE CORPORATION

STATE DA #22 WELL
LOCATED 2630 FEET FROM THE SOUTH LINE
AND 2610 FEET FROM THE WEST LINE OF SECTION 16,
TOWNSHIP 21 SOUTH, RANGE 37 EAST, N.M.P.M.,
LEA COUNTY, NEW MEXICO.

Survey Date: 12/16/06	Sheet 1 of 1 Sheets
W.O. Number: 05.11.1983	Dr By: J.R. Rev 1:N/A
Date: 1/04/06	Disk: CD#5 05111983 Scale: 1"=100'

PROVIDING SURVEYING SERVICES
SINCE 1946
JOHN WEST SURVEYING COMPANY
412 N. DAL PASO
HOBBS, N.M. 88240
(505) 393-3117

LOCATION VERIFICATION MAP



SCALE: 1" = 2000'

CONTOUR INTERVAL:
EUNICE, N.M. - 10'

SEC. 16 TWP. 21-S RGE. 37-E

SURVEY N.M.P.M.

COUNTY LEA

DESCRIPTION 2630' FSL & 2610' FWL

ELEVATION 3464'

OPERATOR APACHE CORPORATION

LEASE STADE DA

U.S.G.S. TOPOGRAPHIC MAP
EUNICE, N.M.

