

DISTRICT I

1625 N. FRENCH DR., HOBBES, NM 88240

DISTRICT II

1301 W. GRAND AVENUE, ARTESIA, NM 86210

DISTRICT III

1000 Rio Brazos Rd., Aztec, NM 87410

State of New Mexico

Energy, Minerals and Natural Resources Department

OIL CONSERVATION DIVISION

1220 SOUTH ST. FRANCIS DR.
Santa Fe, New Mexico 87505

Form C-102

Revised October 12, 2005

Submit to Appropriate District Office

State Lease - 4 Copies

Fee Lease - 3 Copies

DISTRICT IV

1220 S. ST. FRANCIS DR., SANTA FE, NM 87505

WELL LOCATION AND ACREAGE DEDICATION PLAT

☐ AMENDED REPORT

API Number 30-025-38319		Pool Code	Pool Name
Property Code	Property Name NMGSA UNIT		Well Number 365
OGRID No.	Operator Name APACHE CORPORATION		Elevation 3589'

Surface Location

UL or lot No.	Section	Township	Range	Lot Idn	Feet from the	North/South line	Feet from the	East/West line	County
1	35	19-S	36-E		1555	SOUTH	150	EAST	LEA

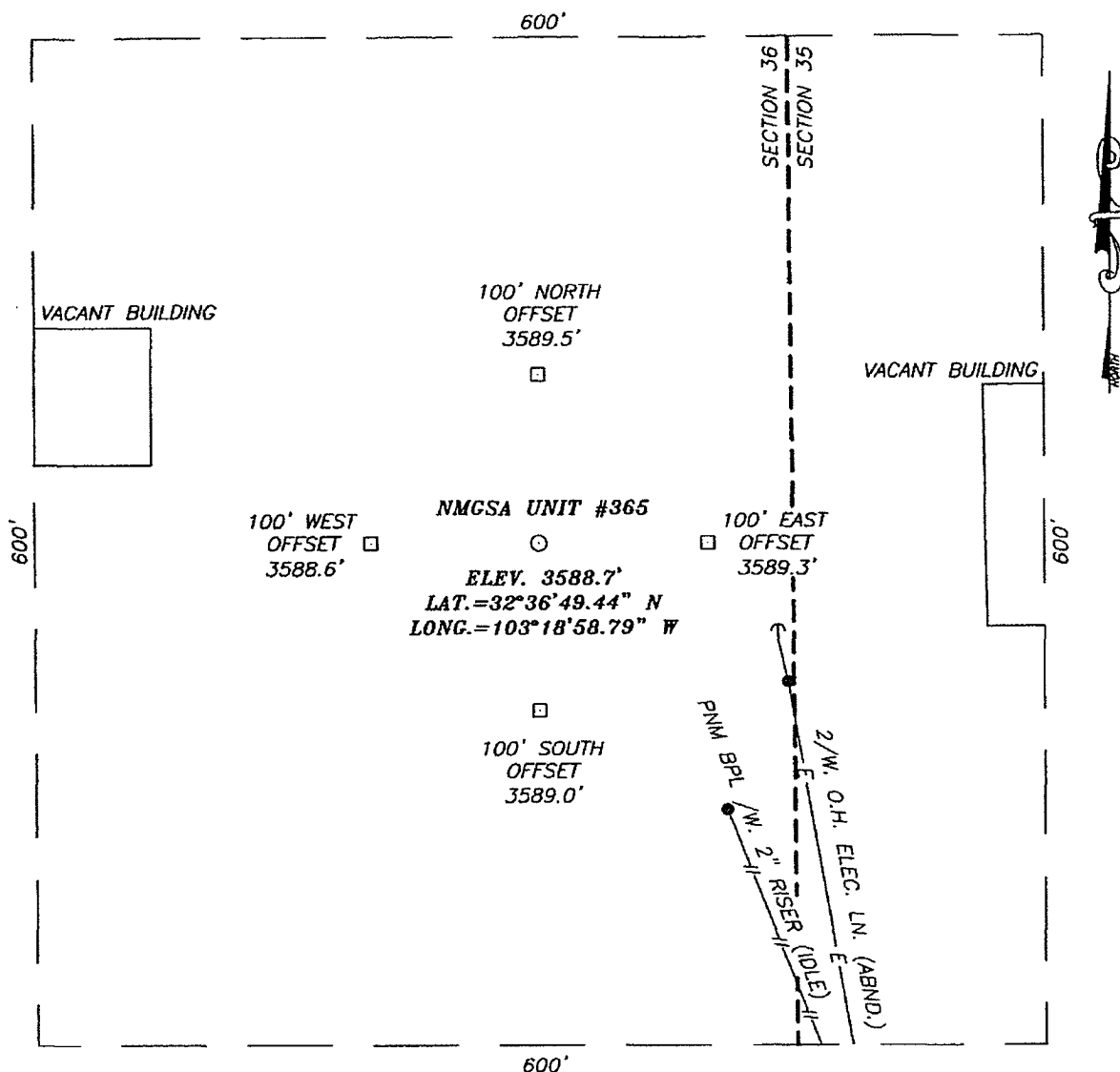
Bottom Hole Location If Different From Surface

UL or lot No.	Section	Township	Range	Lot Idn	Feet from the	North/South line	Feet from the	East/West line	County
Dedicated Acres		Joint or Infill		Consolidation Code		Order No.			

NO ALLOWABLE WILL BE ASSIGNED TO THIS COMPLETION UNTIL ALL INTERESTS HAVE BEEN CONSOLIDATED
OR A NON-STANDARD UNIT HAS BEEN APPROVED BY THE DIVISION

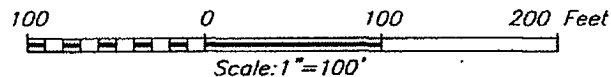
				OPERATOR CERTIFICATION I hereby certify that the information herein is true and complete to the best of my knowledge and belief, and that this organization either owns a working interest or unleased mineral interest in the land including the proposed bottom hole location or has a right to drill this well at this location pursuant to a contract with an owner of such mineral or working interest, or to a voluntary pooling agreement or a compulsory pooling order heretofore entered by the division. Date 3/7/07 Signature <i>Lana Williams</i> Printed Name Lana Williams	
				SURVEYOR CERTIFICATION I hereby certify that the well location shown on this plat was plotted from field notes of actual surveys made by me or under my supervision, and that the same is true and correct to the best of my belief. Date MAY 05, 2006 Date Surveyed MR Signature & Seal of Professional Surveyor 06.11.0766 Certificate No. GARY EIDSON 12641 RONALD J. EIDSON 3239	

SECTION 35, TOWN. 19 SOUTH, RANGE 36 EAST, N.M.P.M.,
LEA COUNTY, NEW MEXICO



DIRECTIONS TO LOCATION

FROM THE INTERSECTION OF CO. RD. H-41 (MADDOX RD.) AND ST. HWY. #322, GO SOUTH ON MADDOX RD. APPROX. 1.0 MILES. VEER RIGHT AND GO WEST APPROX. 0.5 MILES. TURN RIGHT (AT CHILDRESS RD.) AND GO NORTH APPROX. 0.1 MILES. VEER LEFT AND GO WEST APPROX. 0.5 MILES TO THE OLD CLIMEX CHEMICAL FACILITY. THIS LOCATION IS APPROX. 200 FEET SOUTH.



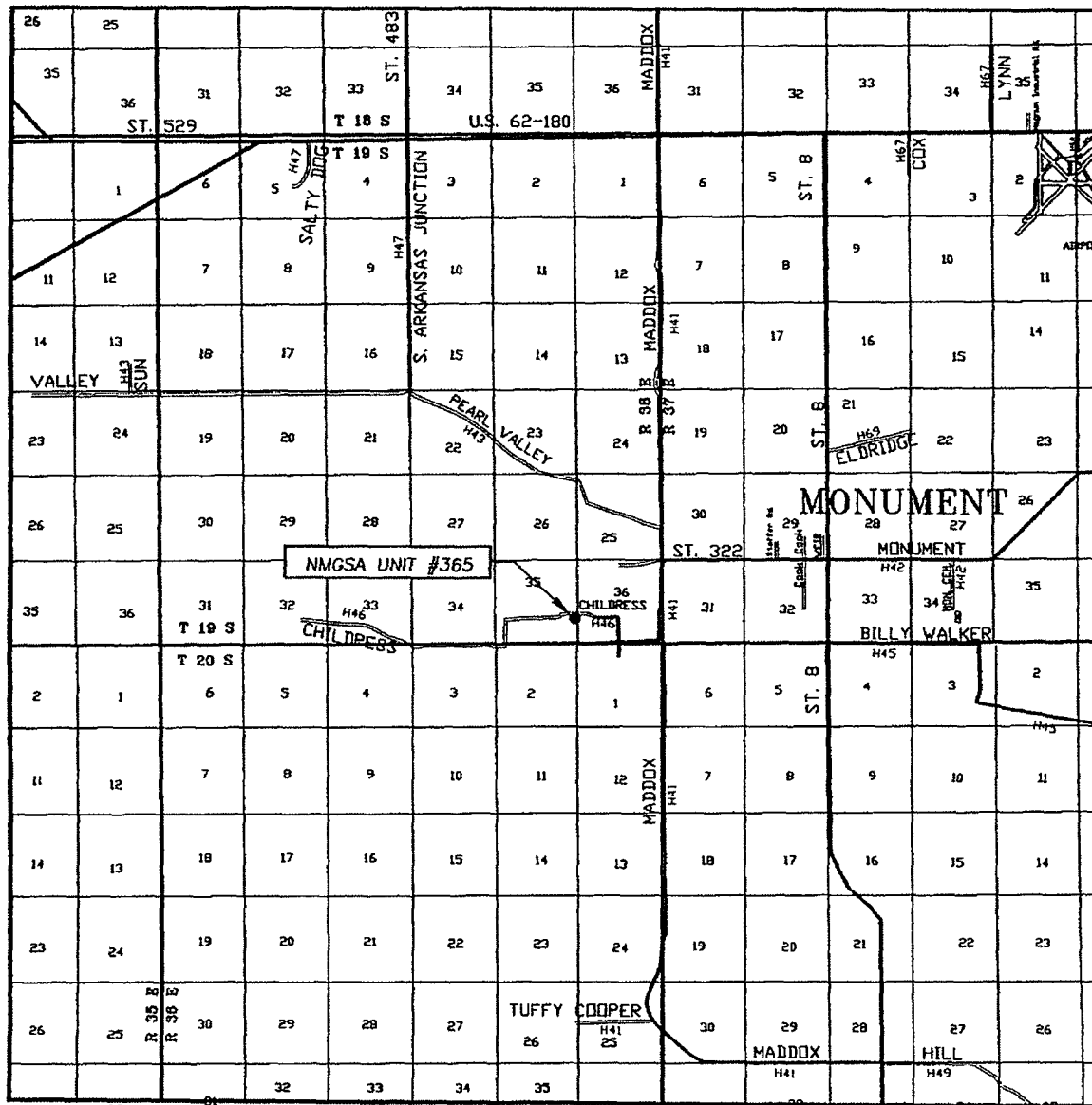
PROVIDING SURVEYING SERVICES
SINCE 1946
JOHN WEST SURVEYING COMPANY
412 N. DAL PASO
HOBBS, N.M. 88240
(505) 393-3117

APACHE CORPORATION

NMCSA UNIT #365
LOCATED 1555 FEET FROM THE SOUTH LINE
AND 150 FEET FROM THE EAST LINE OF SECTION 35,
TOWNSHIP 19 SOUTH, RANGE 36 EAST, N.M.P.M.,
LEA COUNTY, NEW MEXICO.

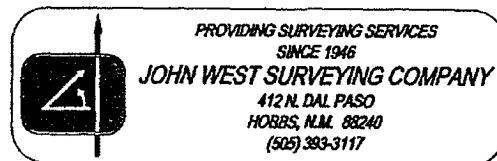
Survey Date: 05/05/06	Sheet 1 of 1 Sheets
W.O. Number: 06.11.0766	Dr By: AR
Date: 01/26/07	Disk: CD#6
06110766	Scale: 1"=100'

VICINITY MAP

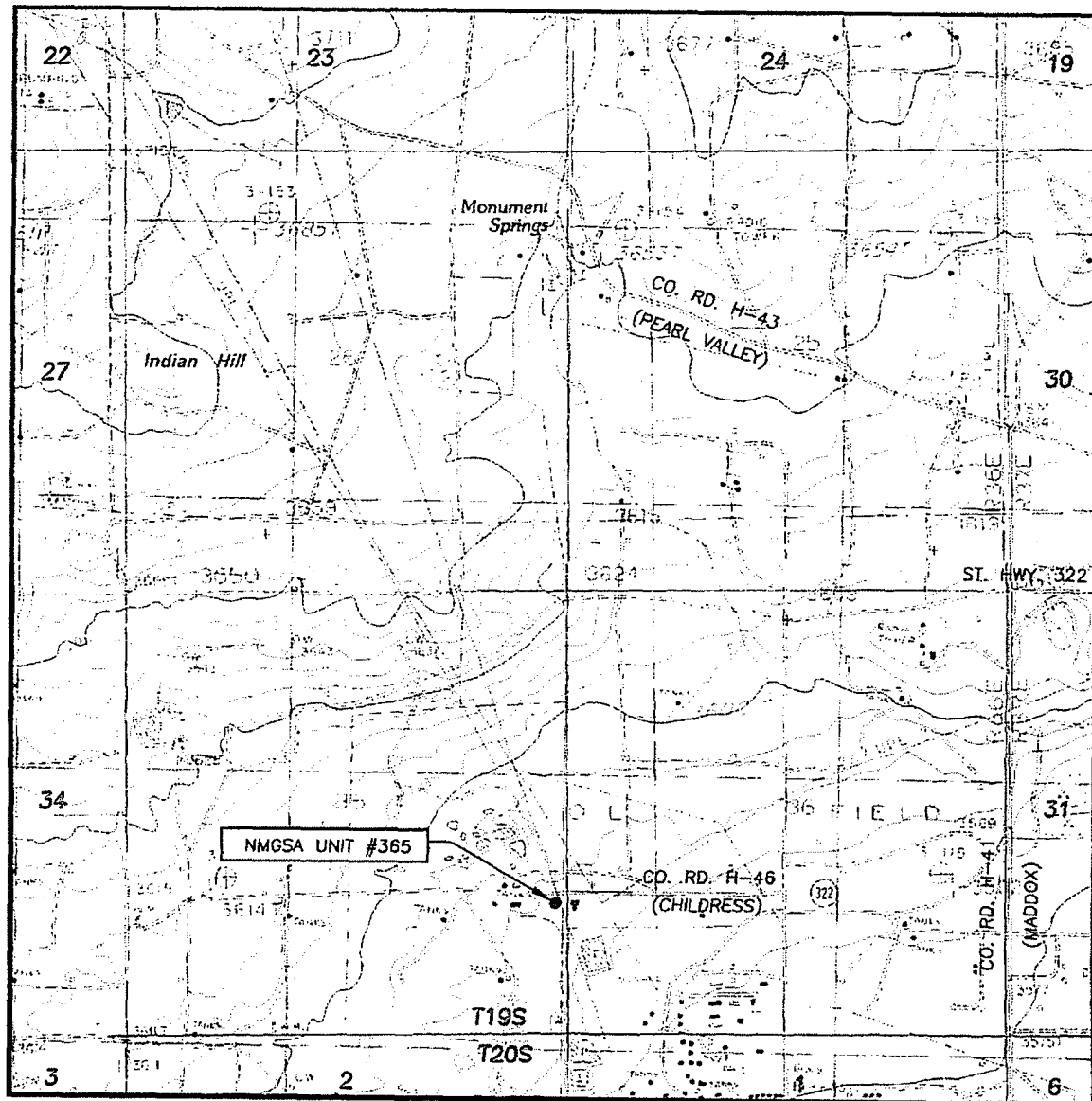


SCALE: 1" = 2 MILES

SEC. 35 TWP. 19-S RGE. 36-E
 SURVEY N.M.P.M.
 COUNTY LEA STATE NEW MEXICO
 DESCRIPTION 1555' FSL & 150' FEL
 ELEVATION 3589'
 OPERATOR APACHE CORPORATION
 LEASE NMGSA UNIT



LOCATION VERIFICATION MAP



SCALE: 1" = 2000'

CONTOUR INTERVAL:

MONUMENT SOUTH, N.M. - 5'
MONUMENT NORTH, N.M. - 10'

SEC. 35 TWP. 19-S RGE. 36-E

SURVEY N.M.P.M.

COUNTY LEA STATE NEW MEXICO

DESCRIPTION 1555' FSL & 150' FEL

ELEVATION 3589'

OPERATOR APACHE CORPORATION

LEASE NMGSA UNIT

U.S.G.S. TOPOGRAPHIC MAP
MONUMENT SOUTH, N.M.

