

DISTRICT I
1625 N. French Dr., Hobbs, NM 88240

State of New Mexico

Form C-102

DISTRICT II
1301 W. Grand Avenue, Artesia, NM 88210

Energy, Minerals, and Natural Resources Department

Revised October 12, 2005

DISTRICT III
1000 Rio Brazos Rd., Aztec, NM 87410

OIL CONSERVATION DIVISION

Submit to Appropriate District Office

State Lease - 4 copies

Fee Lease - 3 copies

DISTRICT IV
1220 S. St. Francis Dr., Santa Fe, NM 87505

1220 South St. Francis Dr.

Santa Fe, New Mexico 87505

AMENDED REPORT

WELL LOCATION AND ACREAGE DEDICATION PLAT

¹ API Number 30-005-28033		² Pool Code 1D540		³ Pool Name Cato San Andres	
⁴ Property Code 30356D		⁵ Property Name C.S.A.U.			⁶ Well Number 852
⁷ OGRID No. 248802		⁸ Operator Name CANO PETROLEUM, INC.			⁹ Elevation 4171'

¹⁰ Surface Location

UL or lot no.	Section	Township	Range	Lot Idn	Feet from the	North/South line	Feet from the	East/West line	County
M	12	8 SOUTH	30 EAST, N.M.P.M.		604'	SOUTH	569'	WEST	CHAVES

¹¹ Bottom Hole Location If Different From Surface

UL or lot no.	Section	Township	Range	Lot Idn	Feet from the	North/South line	Feet from the	East/West line	County
¹² 4D	¹³		¹⁴ Consolidation Code	¹⁵ Order No.					

NO ALLOWABLE WELL BE ASSIGNED TO THIS COMPLETION UNTIL ALL INTERESTS HAVE BEEN CONSOLIDATED OR A NON-STANDARD UNIT HAS BEEN APPROVED BY THE DIVISION

¹⁶

OPERATOR CERTIFICATION

I hereby certify that the information contained herein is true and complete to the best of my knowledge and belief, and that this organization either owns a working interest or undivided mineral interest in the land including the proposed bottom hole location or has a right to drill this well at this location pursuant to a contract with an owner of such a mineral or working interest, or to a voluntary pooling agreement or a compulsory pooling order heretofore entered by the division.

Archie Chavez 5/6/08
 Signature Date
 CINDY CHAVEZ
 Printed Name

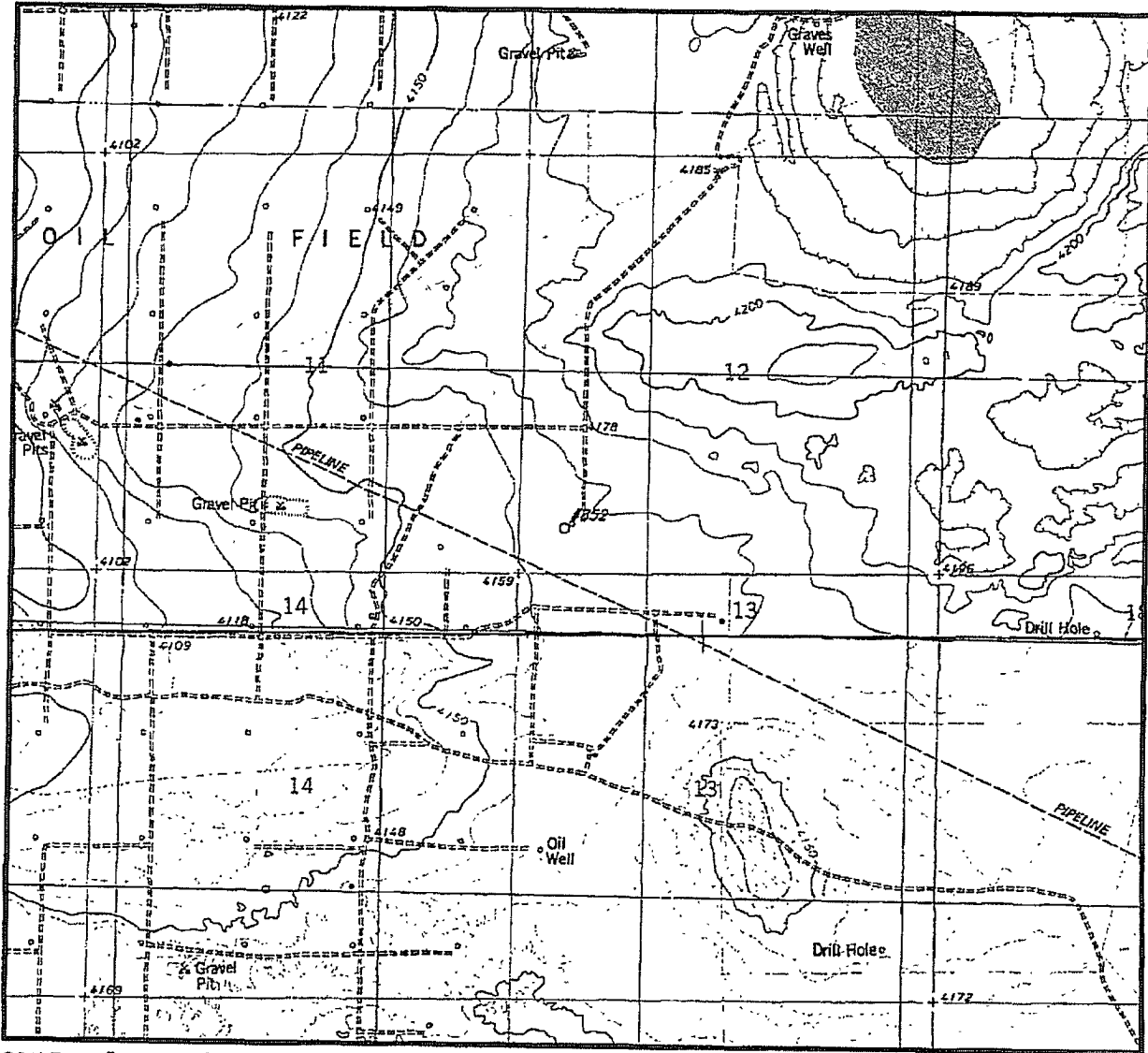
SURVEYOR CERTIFICATION

I hereby certify that the well location shown on this plat was plotted from field notes of actual survey made by me or under my supervision, and that the same is true and correct to the best of my belief.

Date of Survey
 Signature and Seal of Professional Surveyor

Michael Blake Brown
 Michael Blake Brown P.S. #18329
 JOB #134109 / 173 NE / L.A.S.

LOCATION & ELEVATION VERIFICATION MAP



SCALE : 1" = 2000'

CONTOUR INTERVAL 10'

SECTION 12 TWP 8-S RGE 30-E

SURVEY NEW MEXICO PRINCIPAL MERIDIAN

COUNTY CHAVES STATE NM

DESCRIPTION 2019' FNL & 529' FWL

ELEVATION 4190'

OPERATOR CANO PETROLEUM, INC.

LEASE C.S.A.U. #852

U.S.G.S. TOPOGRAPHIC MAP

LONE WOLF, NEW MEXICO

SCALED LAT. LAT.: N 33.6286807

LONG. LONG.: W 103.8389988

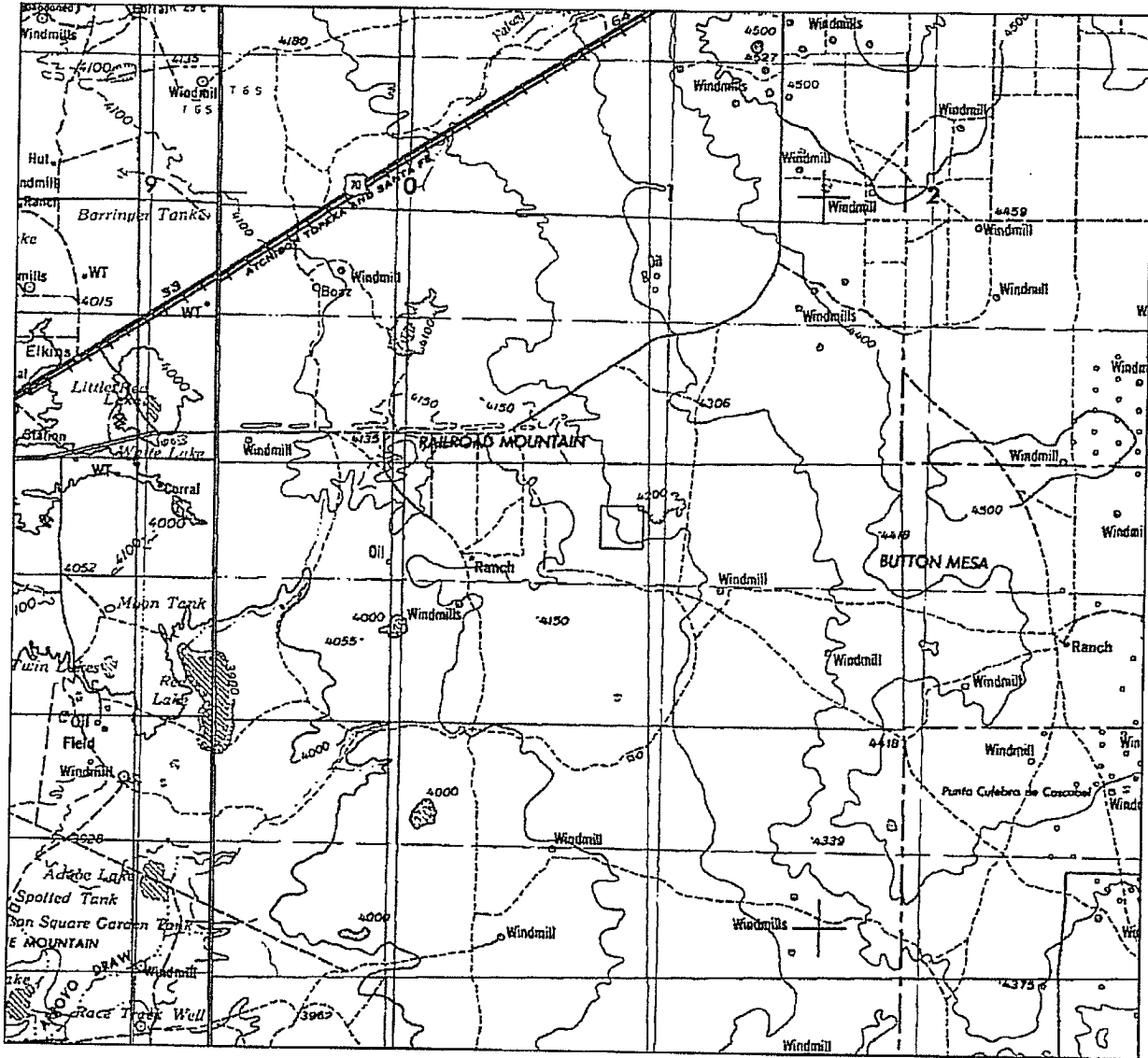


TOPOGRAPHIC LAND SURVEYORS

Surveying & Mapping for the Oil & Gas Industry

2903 N. BIG SPRING
MIDLAND, TX. 79705
(800) 767-1653

VICINITY MAP



SECTION 12 TWP 8-S RGE 30-E
 SURVEY NEW MEXICO PRINCIPAL MERIDIAN
 COUNTY CHAVES STATE NM
 DESCRIPTION 604' FSL & 568' FWL

OPERATOR CANO PETROLEUM, INC.
 LEASE C.S.A.U. #852

DISTANCE & DIRECTION FROM ROSWELL, GO EAST 35.0 MI. ON HWY. 380, THENCE NORTH 14.0 MI. ON LSE. RD., THENCE EAST 1.0 MI., THENCE NORTH 0.2 MI., THENCE EAST 0.5 MI., THENCE NORTH 0.2 MI., THENCE EAST 1.2 MI., THENCE SOUTH 0.3 MI., TO ABANDONED WELL PAD ±100' EAST OF LOCATION.



TOPOGRAPHIC LAND SURVEYORS

Surveying & Mapping for the Oil & Gas Industry

This location has been very carefully staked on the ground according to the best official survey records, maps, and other data available to us.

Review this plat and notify us immediately of any possible discrepancy.

1307 N. HOBART
 PAMPA, TX. 79065
 (800) 658-6382

6709 N. CLASSEN BLVD.
 OKLAHOMA CITY, OK. 73116
 (800) 654-3219

2903 N. BIG SPRING
 MIDLAND, TX. 79705
 (800) 767-1653