

RECEIVED

Form 3160-5 (April 2004)

UNITED STATES DEPARTMENT OF THE INTERIOR BUREAU OF LAND MANAGEMENT

FORM APPROVED OMB NO. 1004-0137 Expires March 31, 2007

JUN 17 2008

OCD-HOBBS

HOBBS OIL

VARIOUS NOTICES AND REPORTS ON WELLS Do not use this form for proposals to drill or to re-enter an abandoned well. Use Form 3160-3 (APD) for such proposals.

SUBMIT IN TRIPLICATE - Other instructions on reverse side

1. Type of Well: Oil Well, Gas Well, Other (checked), Water Injection
2. Name of Operator: XTO Energy Inc.
3a. Address: 200 N. Loraine, Ste. 800 Midland, TX 79705
3b. Phone No: 432-620-6740
4. Location of Well: 2310' FSL & 330' FEL, Unit Ltr. I, Section 10, T-20S, R-36E
7. If Unit or CA/Agreement, Name and/or No.: EMSUB
8. Well Name and No.: Eunice Monument South Unit B #862
9. API Well No.: 30-025-04205
10. Field and Pool, or Exploratory Area: Eunice Monument; Grayburg-San Andres
11. County or Parish, State: LEA NM

12. CHECK APPROPRIATE BOX(ES) TO INDICATE NATURE OF NOTICE, REPORT, OR OTHER DATA

Table with 2 columns: TYPE OF SUBMISSION and TYPE OF ACTION. Includes checkboxes for Notice of Intent, Subsequent Report, Final Abandonment Notice, Acidize, Deepen, Production (Start/Resume), Water Shut-Off, etc.

3. Describe Proposed or Completed Operation (clearly state all pertinent details, including estimated starting date of any proposed work and approximate duration thereof. If the proposal is to deepen directionally or recompleat horizontally, give subsurface locations and measured and true vertical depths of all pertinent markers and zones. Attach the Bond under which the work will be performed or provide the Bond No. on file with BLM/BIA. Required subsequent reports shall be filed within 30 days following completion of the involved operations. If the operation results in a multiple completion or recompleat in a new interval, a Form 3160-4 shall be filed once testing has been completed. Final Abandonment Notices shall be filed only after all requirements, including reclamation, have been completed, and the operator has determined that the final site is ready for final inspection.)

- 1. Intent to P&A Well. MIRU PU. ND WH. NU BOP. TIH w/2-7/8" workstring & tag CIBP @ 3,760'.
2. Mix & circulate 9.0 ppg mud. Spot 50 sx cement. PUH tp 2,900' and circulate clean.
3. WOC overnight. Tag TOC @ 3,075' next morning.
4. PUH to 2,600'. Spot 30 sx cement. PUH to 2,150' & circulate clean. Tag TOC @ 2,250'.
5. PUH to 1,450'. Spot 35 sx cement. PUH to 900' & circulate clean. Tag TOC @ 1,040'.
6. PUH to 500'. Fill cement inside 5-1/2" casing from 500' to surface. This should take roughly 43 sks plus 5% excess so assume a total of 45 sks for the surface plug.
7. POOH and lay down all equipment. RDMO plugging company.
8. Cut off wellhead and anchors, install dryhole marker, and clean location.

ok. CW
BASE OF SALT
TOP OF SALT.

Returned: Need to run CBL to determine TOC. Supply copy to BLM. Supply formation tops to include base and top of salt. Recalculate 1st cement plug of Annis 6/14/08

14. I hereby certify that the foregoing is true and correct
Name (Printed/Typed): Kristy Ward
Title: Regulatory Analyst
Date: 05/20/2008

THIS SPACE FOR FEDERAL OR STATE OFFICE USE

Approved by: [Signature]
Title: OC DISTRICT SUPERVISOR/GENERAL MANAGER
Date: [Blank]

Conditions of approval, if any, are attached. Approval of this notice does not warrant or certify that the applicant holds legal or equitable title to those rights in the subject lease which would entitle the applicant to conduct operations thereon.

Title 18 U.S.C Section 1001, and Title 43 U.S.C. Section 1212, makes it a crime for any person knowingly and willfully to make to any department or agency of the United States any false, fictitious or fraudulent statements or representations as to any matter within its jurisdiction.

WELL DATA SHEET

FIELD: Eunice Monument

WELL NAME: EMSUB #862

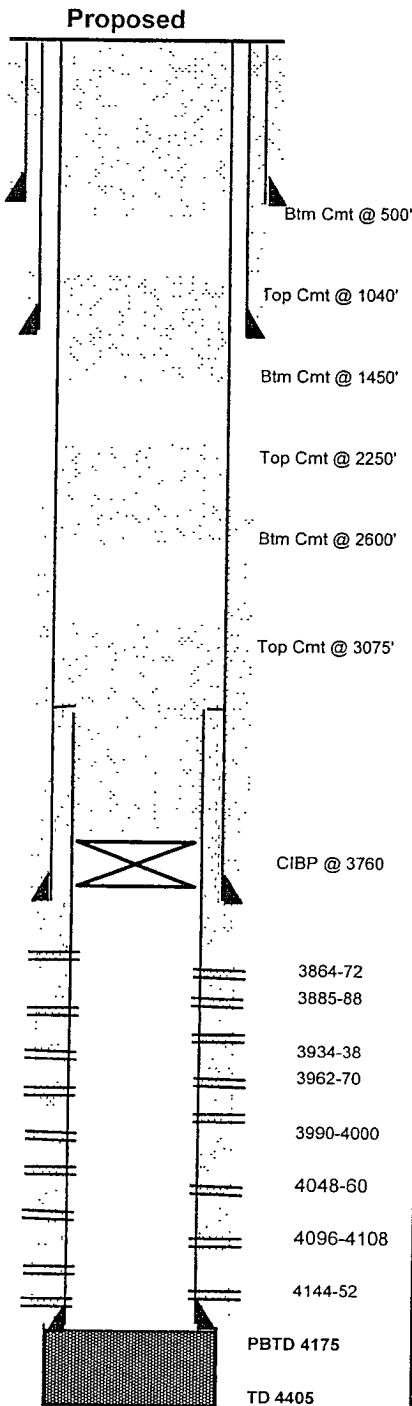
FORMATION: Grayburg

LOC: 2310' FSL & 330' FEL
TOWNSHIP: 20-S
RANGE: 36-E

SEC: 10, Unit Ltr: I
COUNTY: Lea
STATE: NM

DF: 3591'
GL: 3584'
DF-GL = 7'

CURRENT STATUS:
API NO: 30-025-04205
CHEVNO: FA5350



10-3/4" OD,
 Surf. Pipe set @ 268'
 w/ 225 sxs cmt. Circ
 to surf

7 5/8" OD 26.4# Interm. Csg
 set @ 1263' w/ 425 sx.
 TOC @ surf. by calc.

no data on TOC

5 1/2" OD,
 17# csg set @ 3772'
 w/ 425 sxs cmt

4 1/2 K55 11.6# RFC Liner
 & Baker Liner Hanger
 from 3846-57
 3446 to 4180'
 cmt w/ 75 sx.

Date Completed: 4/16/38
Initial Production: 216 bopd, 0 bwpd, 224 mcf
Initial Formation: Grayburg
From: 3772' to 3891'

Completion Data
 4/38 Cmpltd OH 3772' - 3891' 216 BOPD W/ 1037 GOR
Subsequent Workover or Reconditioning:
 9/67 750 gal solvent dwn csg. Pmpd 500 gal scale inhibitor RTP
 2/83 c/o 10' fill to 3856' Perf OH @ 3775-80, 3787-97, 3815-24,
 3837-47. Acdz OH w/ 80 bbls 15% HCl in 2 stgs Ppd chemical
 squeeze. RTP 2 BO, 3 BW 38 MCFGPD.

EMSUB WELL WORK

5/91 MIRU PU Test csg to 500 psi, ok. RIH w/ bit attempting to deepen Deepen to 4400'. RU Halliburton Logging Service. Log w/ GR-Neutron_Spectral Den. log. Swab test. Swab well f/ 4180' - 4405'. RU HOWCO Pmp 30 sx cmt down tbg for balanced plug f/ 4180'-4405'. Under reamed f/ 3782' to 4180'. Ran 18 Jts 4 1/2 K55 11.6# RFC Liner & Baker Liner Hanger. liner from 3446' to 4180' Liner cemented w/75 sx. Did not bump plug No cement on TOL Load CSG & TST Liner Top to 500 psi f/30 min Lost 50 psi

Perf 3 1/8" HSC gun - 2 JHPF, 120 degree phasing from 4156-66, 4144-52, 4120-32, 4096-4108, 4077-88, 4048-60, 4040-44, 4020-34, 3990-4000, 3976-82, 3962-70, 3944-48, 3934-38, 3910-16, 3885-88, 3864-72, 3846-57 (286 holes) Perfs treated in four stages: 4077-4166 w/ 5300 gal 15% NEFE HCl, 4020-60 w/ 3000 gal 15% NEFE HCl, 3910-4000 w/ 3800 gal 15% NEFE HCl, 3846-3888 w/ 2200 gal 15% NEFE HCl Return to prod Tested 0 BO, 83 BW, 0 Gas on 5/25/91 with FL 3700' from surface SN at 3742'

11/93 Convert to Injection
 POOH w/ production string. RIH with injection string as follows Stainless Steel nipple at wellhead, 121 jts 2 3/8" 4.7#, J-55, EUE, 8 Rd polyethelene lined tbg, FL on/off tool w/ 1 43" 'F' profile, SS nipple, 4 1/2" Sur-Loc pkr, 2 3/8" wireline entry guide. Set pkr at 3793'. Test csg to 300 psi, ok.

2/07 PU 3-3/4" overshot (Dressed for 2-3/8" tbg), w/x-over, 1-jt of 3-13/16" wash pipe & top sub. RIH w/WS Tag @ 3,228. POOH w/WS LD tools PU 2 jts of 4-1/2" washpipe, 4-3/4" smooth OD shoe, top sub, jars, 6 - 3-1/2" DC's, & cross-over (BHA length - 264 38") RIH w/WS Tag @ 3,228. RU Reverse unit, wash to 3446'. Circ hole clean POOH w/45 stds. LD DC's & wash pipe PU overshot (dressed 3-1/16"), x-over, 1jt of 3-11/16" wash pipe, & top sub RIH w/tbg & tag @ 3446', TOL. Get in liner & tag @ 3513', work to 3581' stack out. PU 2-4 pts of drag. LD 2jts, PU still dragging (couldn't go dwn) POOH no rec PU overshot (dressed 3-1/16"), x-over, 1jt of 3-11/16" wash pipe, & top sub RIH w/tbg & tag @ 3,581', wash dwn to 3,789', latch on to on/off tool Rel pkr. POOH w/tbg & pkr LD tools. RIH w/RBP & pkr. Stack out at 3,480'. Set RBP LD 1 jt, set pkr. Press test backside to 500 psi. Held ok. Rel pkr & RBP POOH w/4 stds. SWI SDFin POOH w/tbg LD RBP & pkr. RIH w/bit & scraper & tag @ 3,480' RU reverse unit clean well out to 3,792', circ hole clean POOH w/tbg. RIH w/RBP & pkr. Stack out at 3,480' POOH w/RBP & pkr LD RBP, RIH w/pkr. Set pkr @ 3,792' RU Smith, load backside, press test to 500 psi. Held ok RD Smith POOH w/tbg LD RBP & pkr. RIH w/bit & scraper & tag @ 3,480' RU reverse unit clean well out to 3,792', circ hole clean POOH w/tbg. RIH w/RBP & pkr. Stack out at 3,480' POOH w/RBP & pkr LD RBP, RIH w/pkr Set pkr @ 3,792' RU Smith, load backside, press test to 500 psi Held ok. LD WS & pkr. RU Lobo pmp trk to csg RU Gray WL RIH w/CIBP, & pmp 35 bbls dwn csg. Set CIBP @ 3,760'. RD WL, ND BOP NU WH. Press test csg to 500 psi Held ok. RD pmp trk, RDMO PU Well TA'd