

DISTRICT I
1625 N FRENCH DR., HOBBS, NM 88240

DISTRICT II
1301 W. GRAND AVENUE, ARTESIA, NM 88210

DISTRICT III
1000 Rio Brazos Rd., Aztec, NM 87410

RECEIVED
SEP 10 2008
HOBBS OCT

State of New Mexico
Minerals and Natural Resources Department

OIL CONSERVATION DIVISION
1220 SOUTH ST. FRANCIS DR.
Santa Fe, New Mexico 87505

Form C-102
Revised October 12, 2005
Submit to Appropriate District Office
State Lease - 4 Copies
Fee Lease - 3 Copies

DISTRICT IV
1220 S. ST. FRANCIS DR., SANTA FE, NM 87505

WELL LOCATION AND ACREAGE DEDICATION PLAT

☐ AMENDED REPORT

| | | |
|-----------------------------------|--|---|
| API Number 30-025-39240 | Pool Code 50350 | Pool Name <i>Penrose Skelly Grayburg</i> |
| Property Code 2634 | Property Name C.L. HARDY | Well Number 10 |
| OGRID No. 4323 | Operator Name CHEVRON USA INC. | Elevation 3495' |

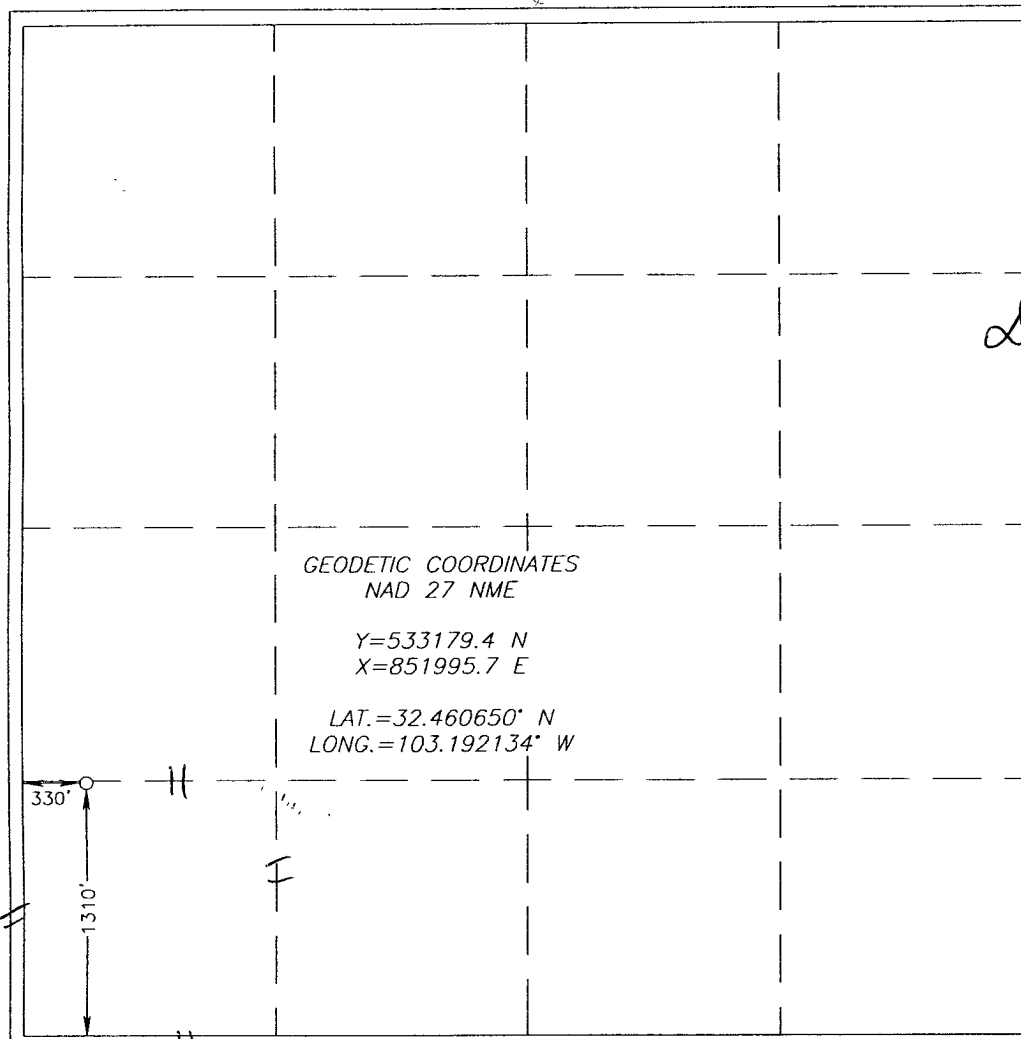
Surface Location

| UL or lot No. | Section | Township | Range | Lot Idn | Feet from the | North/South line | Feet from the | East/West line | County |
|---------------|---------|----------|-------|---------|---------------|------------------|---------------|----------------|--------|
| M | 20 | 21-S | 37-E | | 1310 | SOUTH | 330 | WEST | LEA |

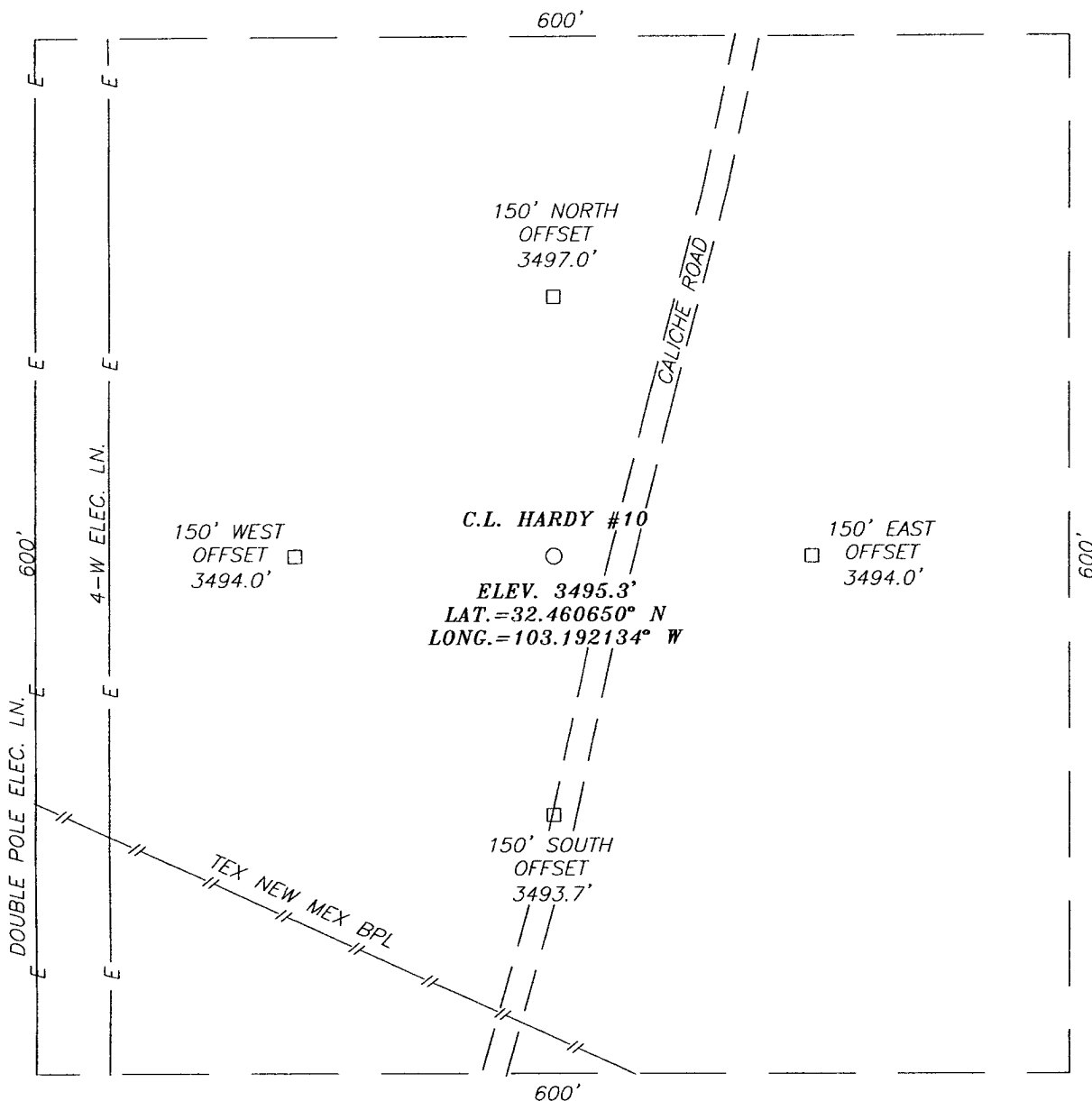
Bottom Hole Location If Different From Surface

| UL or lot No. | Section | Township | Range | Lot Idn | Feet from the | North/South line | Feet from the | East/West line | County |
|------------------------------|-----------------|--------------------|------------------------------|---------|---------------|------------------|---------------|----------------|--------|
| | | | | | | | | | |
| Dedicated Acres 40 | Joint or Infill | Consolidation Code | Order No. NSL-5906 | | | | | | |

NO ALLOWABLE WILL BE ASSIGNED TO THIS COMPLETION UNTIL ALL INTERESTS HAVE BEEN CONSOLIDATED
OR A NON-STANDARD UNIT HAS BEEN APPROVED BY THE DIVISION

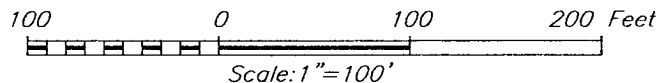
| | |
|---|---|
|  | <p>OPERATOR CERTIFICATION</p> <p>I hereby certify that the information herein is true and complete to the best of my knowledge and belief, and that this organization either owns a working interest or unleased mineral interest in the land including the proposed bottom hole location or has a right to drill this well at this location pursuant to a contract with an owner of such mineral or working interest, or to a voluntary pooling agreement or a compulsory pooling order heretofore entered by the division.</p> <p><i>Denise Pinkerton</i> 9/15/08 Signature Date</p> <p>DENISE PINKERTON Printed Name</p> |
| | <p>SURVEYOR CERTIFICATION</p> <p>I hereby certify that the well location shown on this plat was plotted from field notes of actual surveys made by me or under my supervision, and that the same is true and correct to the best of my belief.</p> |
| | <p>Date Surveyed 9/18/08 LA</p> <p>Signature & Seal of Professional Surveyor <i>Ronald J. Eidson</i> Professional Surveyor</p> |
| | <p>Certificate No. RONALD EIDSON 3239</p> |

SECTION 20, TOWNSHIP 21 SOUTH, RANGE 37 EAST, N.M.P.M.,
LEA COUNTY, NEW MEXICO



DIRECTIONS TO LOCATION

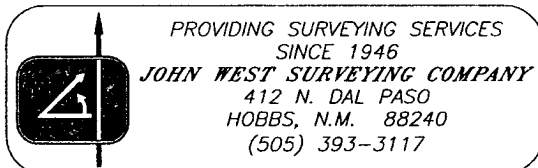
FROM INTERSECTION ST. HWY. #8 AND CO. RD. #E33 (TURNER), GO NORTH ON CO. RD. #E33 APPROX. 1.15 MILES. TURN LEFT AND GO WEST APPROX. 1.0 MILES. VEER RIGHT AND GO NORTH APPROX. 0.1 MILE. THIS LOCATION IS APPROX. 50 FEET LEFT.


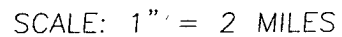


CHEVRON USA INC.

C.L. HARDY #10 WELL
LOCATED 1310 FEET FROM THE SOUTH LINE
AND 330 FEET FROM THE WEST LINE OF SECTION 20,
TOWNSHIP 21 SOUTH, RANGE 37 EAST, N.M.P.M.,
LEA COUNTY, NEW MEXICO.

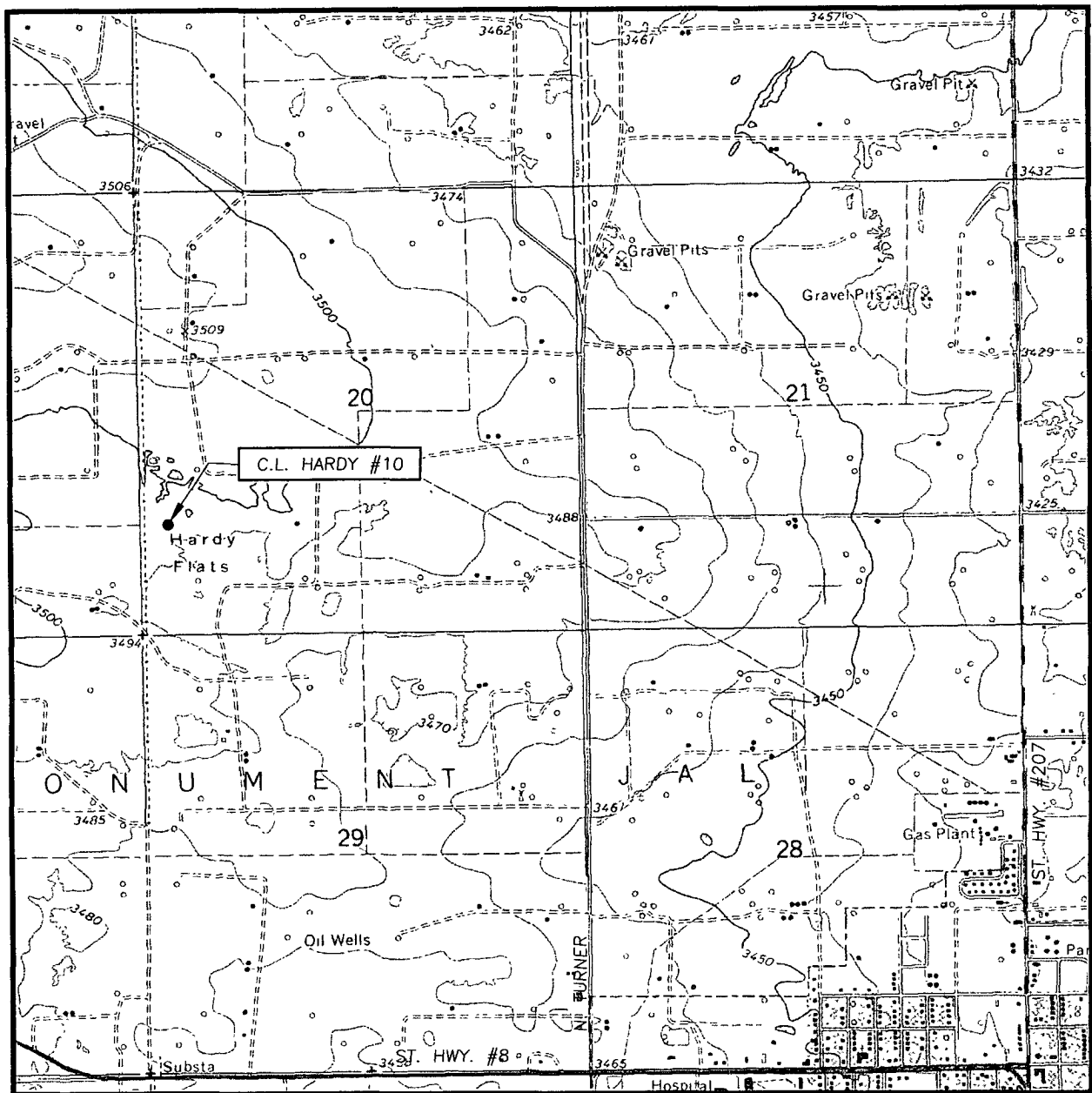
| | |
|-------------------------|---------------------|
| Survey Date: 7/18/08 | Sheet 1 of 1 Sheets |
| W.O. Number: 08.11.1151 | Dr By: LA |
| Date: 7/29/08 | 08111151 |
| | Scale: 1"=100' |





PROVIDING SURVEYING SERVICES
SINCE 1946
JOHN WEST SURVEYING COMPANY
412 N. DAL PASO
HOBBS, N.M. 88240
(505) 393-3117

LOCATION VERIFICATION MAP



SCALE: 1" = 2000'

CONTOUR INTERVAL:
EUNICE, N.M. - 10'

SEC. 20 TWP. 21-S RGE. 37-E

SURVEY _____ N.M.P.M.

COUNTY LEA STATE NEW MEXICO

DESCRIPTION 1310' FSL & 330' FWL

ELEVATION 3495'

OPERATOR CHEVRON USA INC.

LEASE C.L. HARDY

U.S.G.S. TOPOGRAPHIC MAP
EUNICE, N.M.

