

Submit To Appropriate District Office
 State Lease - 6 copies
 Fee Lease - 5 copies
 District I
 1625 N. French Dr., Hobbs, NM 88240
 District II
 1301 W. Grand Avenue, Artesia, NM 88210
 District III
 1000 Rio Brazos Rd., Aztec, NM 87410
 District IV
 1220 S. St. Francis Dr., Santa Fe, NM 87505

State of New Mexico
 Energy, Minerals and Natural Resources
 Oil Conservation Division
 1220 South St. Francis Dr.
 Santa Fe, NM 87505

Form C-105
 Revised June 10, 2003
 WELL API NO.
 30-025-35981
 5. Indicate Type of Lease
 STATE FEE
 State Oil & Gas Lease No.

WELL COMPLETION OR RECOMPLETION REPORT AND LOG

1a. Type of Well:
 OIL WELL GAS WELL DRY OTHER
 b. Type of Completion:
 NEW WORK DEEPEN PLUG DIFF.
 WELL OVER BACK RESVR. OTHER

7. Lease Name or Unit Agreement Name
 Markham 33

2. Name of Operator
 Chesapeake Operating, Inc.

8. Well No.
 1

3. Address of Operator
 P. O. Box 18496, Okla. City, OK 73154-0496

9. Pool name or Wildcat
 Morton Mississippian

4. Well Location
 Unit Letter L : 1650 Feet From The South Line and 660 Feet From The West Line
 Section 33 Township 14S Range 35E NMPM Lea County

10. Date Spudded 03/16/03 11. Date T.D. Reached 06/04/03 12. Date Compl. (Ready to Prod.) 06/25/03 13. Elevations (DF& RKB, RT, GR, etc.) GR: 4019 14. Elev. Casinghead 4020
 15. Total Depth 13,900 16. Plug Back T.D. 13,500 17. If Multiple Compl. How Many Zones? NA 18. Intervals Drilled By 0-TD Rotary Tools 0-TD Cable Tools

19. Producing Interval(s), of this completion - Top, Bottom, Name 13541-561' Mississippian 20. Was Directional Survey Made Yes
 21. Type Electric and Other Logs Run Comp Neutron, GR, CCL; Cement Bond GR 22. Was Well Cored No

23. **CASING RECORD (Report all strings set in well)**

CASING SIZE	WEIGHT LB./FT.	DEPTH SET	HOLE SIZE	CEMENTING RECORD	AMOUNT PULLED
9-5/8	40#	4500'	12-1/4	1250 sx	
13-3/8	48#	436'	17-1/2	380 sx	
7"	26 & 29#	11,577	8-3/4	300 sx	

24. **LINER RECORD**

SIZE	TOP	BOTTOM	SACKS CEMENT	SCREEN	25. TUBING RECORD
4-1/2"	11,337	13,898	355		SIZE: 2-3/8 DEPTH SET: 12,772 PACKER SET: 12,772'

26. Perforation record (interval, size, and number)
 13541-13561 (4 spf, 40-0.48 holes) plugged back with CIBP
 12998-13008 (4 spf, 40-0.48" holes)

27. ACID, SHOT, FRACTURE, CEMENT, SQUEEZE, ETC.
 DEPTH INTERVAL AMOUNT AND KIND MATERIAL USED
 13541-61' 7800 gal 15% NEFe acid, 53 bbl 2% KCL
 12998-13008 500 gal 7.5% HCL + 2.6 tons CO2, 245 gal methanol frac w/31000# 20/40 Bauxite Sd

28. **PRODUCTION**

Date First Production 06/25/03 1:30 p.m. Production Method (*Flowing, gas lift, pumping - Size and type pump*) Flowing/swabbing Well Status (*Prod. or Shut-in*) SI

Date of Test	Hours Tested	Choke Size	Prod'n For Test Period	Oil - Bbl	Gas - MCF	Water - Bbl.	Gas - Oil Ratio
07/09/03	(Miss) 24	64/64"		0	48	0	NA
09/25/03 (Brun Sd)	24	7/64"		0	25	0	NA

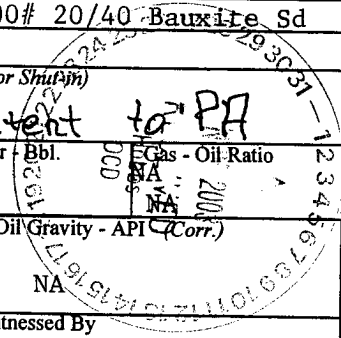
Flow Tubing Press.	Casing Pressure	Calculated 24-Hour Rate	Oil - Bbl.	Gas - MCF	Water - Bbl.	Oil Gravity - API (Corr.)
290	0		0	48	0	NA
1400	0		0	25	0	NA

29. Disposition of Gas (*Sold, used for fuel, vented, etc.*) Sold Test Witnessed By

30. List Attachments
 Inclination, Logs, C104, C103

31. I hereby certify that the information shown on both sides of this form as true and complete to the best of my knowledge and belief

Signature Andrew J. McCalmont Printed Name Andrew J. McCalmont Title Asset Manager Date 10/31/03
 E-mail Address



INSTRUCTIONS

This form is to be filed with the appropriate District Office of the Division not later than 20 days after the completion of any newly-drilled or deepened well. It shall be accompanied by one copy of all electrical and radio-activity logs run on the well and a summary of all special tests conducted, including drill stem tests. All depths reported shall be measured depths. In the case of directionally drilled wells, true vertical depths shall also be reported. For multiple completions, items 25 through 29 shall be reported for each zone. The form is to be filed in quintuplicate except on state land, where six copies are required. See Rule 1105.

INDICATE FORMATION TOPS IN CONFORMANCE WITH GEOGRAPHICAL SECTION OF STATE

Southeastern New Mexico		Northwestern New Mexico	
T. Anhy	T. Canyon	T. Ojo Alamo	T. Penn. "B"
T. Salt	T. Strawn 11960	T. Kirtland-Fruitland	T. Penn. "C"
B. Salt	T. Atoka 12360	T. Pictured Cliffs	T. Penn. "D"
T. Yates	T. Atoka-Lm Mkr 12540	T. Cliff House	T. Leadville
T. 7 Rivers	T. Brunson Sh. 12990	T. Menefee	T. Madison
T. Queen	T. Atoka Datum 13095	T. Point Lookout	T. Elbert
T. Grayburg	T. Mesa SS 13320	T. Mancos	T. McCracken
T. San Andres 4660	T. Lwr Morrow SS 13415	T. Gallup	T. Ignacio Otzte
T. Glorieta 6200	T. Austin Cycle 13560	Base Greenhorn	T. Granite
T. Paddock	T. Chester Sh 13220	T. Dakota	T.
T. Blinebry	T. Chester 13900	T. Morrison	T.
T. Tubb 7500	T.	T. Todilto	T.
T. Drinkard	T.	T. Entrada	T.
T. Abo 8280	T.	T. Wingate	T.
T. Wolfcamp 9880	T.	T. Chinle	T.
T. Penn	T.	T. Permian	T.
T. Cisco (Bough C) 10440	T.	T. Penn "A"	T.

OIL OR GAS SANDS OR ZONES

No. 1, from.....to.....
 No. 2, from.....to.....
 No. 3, from.....to.....
 No. 4, from.....to.....

IMPORTANT WATER SANDS

Include data on rate of water inflow and elevation to which water rose in hole.
 No. 1, from.....to.....feet.....
 No. 2, from.....to.....feet.....
 No. 3, from.....to.....feet.....

LITHOLOGY RECORD (Attach additional sheet if necessary)

From	To	Thickness In Feet	Lithology	From	To	Thickness In Feet	Lithology
8100	9811	1711	Dolomite				
9811	11553	1742	Limestone				
11553	11993	440	Shale				
11993	12531	538	Limestone				
12531	13086	555	Shale & Sand				
13086	13526	440	Limestone Sand & Shale				
13526	13900	374	Limestone				