

District I

1625 N. French Dr., Hobbs, NM 88240
District II
1301 W. Grand Avenue, Artesia, NM 88210
District III
1000 Rio Brazos Rd., Aztec, NM 87410
District IV
1220 S. St. Francis Dr., Santa Fe, NM 87505

State of New Mexico
Energy, Minerals & Natural Resources Department
OIL CONSERVATION DIVISION
1220 South St. Francis Dr.
Santa Fe, NM 87505

Form C-102
Revised October 12, 2005
Submit to Appropriate District Office
State Lease - 4 Copies
Fee Lease - 3 Copies

AMENDED REPORT

WELL LOCATION AND ACREAGE DEDICATION PLAT

1 API Number 30-025-30680	2 Pool Code 17647	3 Pool Name Diamondtail Delaware
4 Property Code 10723	5 Property Name CUERVO FEDERAL	6 Well Number 3
7 OGRID No 21712	8 Operator Name STRATA PRODUCTION COMPANY	9 Elevation 3709

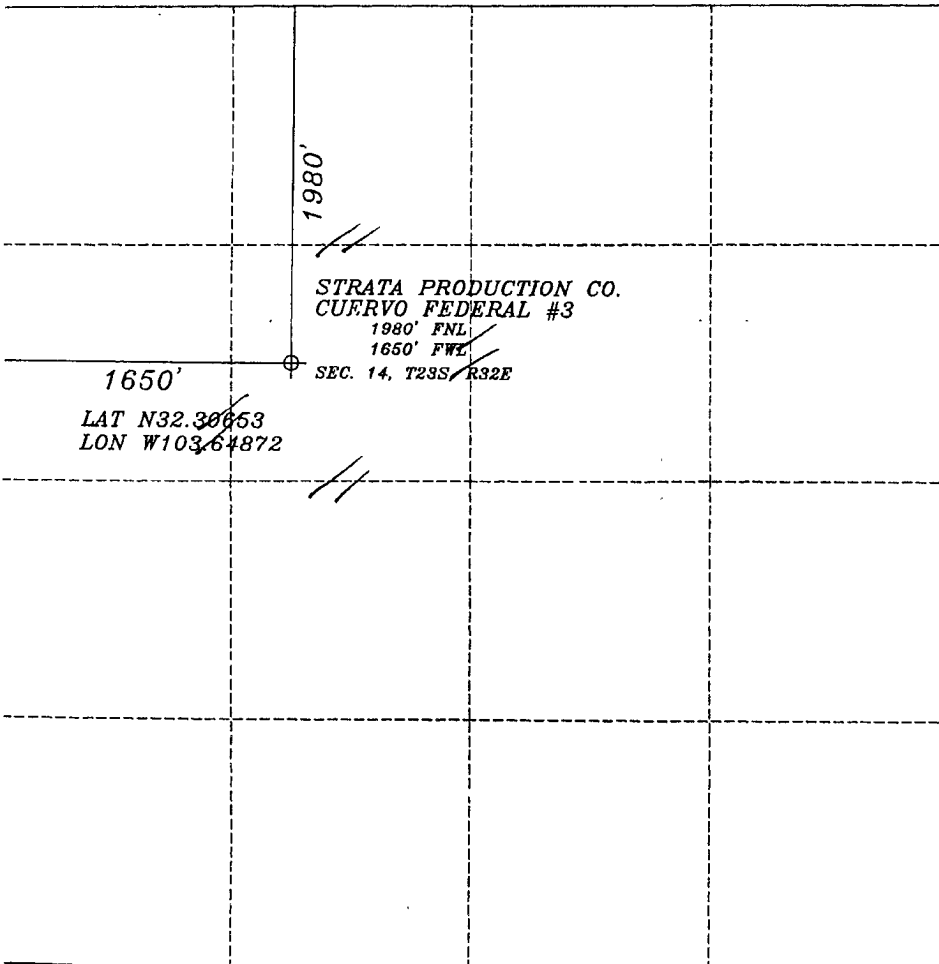
10 Surface Location

UL or lot no.	Section	Township	Range	Lot Idn	Feet from the	North/South line	Feet from the	East/West line	County
F	14	23-S	32-E	1980	1980	NORTH	1650	WEST	LEA

11 Bottom Hole Location If Different From Surface

UL or lot no.	Section	Township	Range	Lot Idn	Feet from the	North/South line	Feet from the	East/West line	County
12 Dedicated Acres 40	13 Joint or Infill	14 Consolidation Code	15 Order No.						

No allowable will be assigned to this completion until all interests have been consolidated or a non-standard unit has been approved by the division.



17 OPERATORS CERTIFICATION

I hereby certify that the information contained herein is true and complete to the best of my knowledge and belief, and that this organization either owns a working interest or unleased mineral interest in the land including the proposed bottom hole location or has a right to drill this well at this location pursuant to a contract with an owner of such mineral or working interest, or to voluntary pooling agreement or a compulsory pooling order heretofore entered by the division.

Frank S. Morgan 11/02/2007
Signature Date

Frank S. Morgan 11/02/2007
Printed Name

18 SURVEYOR CERTIFICATION SURFACE LOCATION ONLY

I hereby certify that the well location shown on this plat was plotted from field notes of actual surveys made by me or under my supervision, and that the same is true and correct to the best of my belief
Signature and Seal of Professional Surveyor:

OCTOBER 12, 2007
Date of Survey

DAN R. REDDY
NEW MEXICO
5412
REGISTERED LAND SURVEYOR
PROFESSIONAL ENGINEER
Certificate No. 5412
DAN R. REDDY NM PE&PS #5412